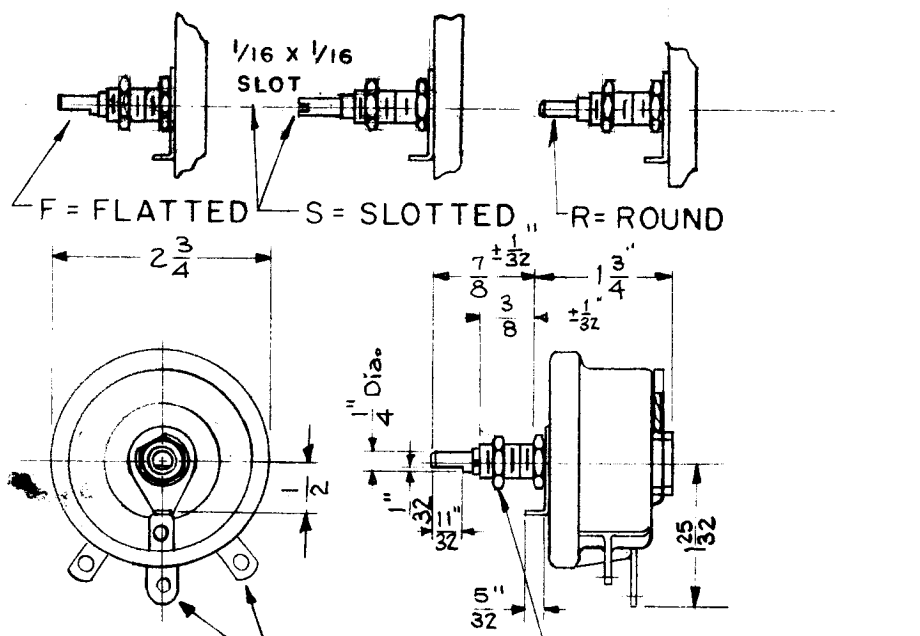


TMC PART NUMBER	MFG. STOCK No.	Total ohms	Max Amps	Steps Approx.
RP-101-1	1100	0.5	12.300	28
RP-101-2	1101	1	8.660	27
RP-101-3	1102	2	6.120	28
RP-101-4	1103	3	5.000	53
RP-101-5	1104	5	3.880	54
RP-101-6	1105	7.5	3.160	51
RP-101-7	1106	10	2.740	55
RP-101-8	1107	16	2.170	131
RP-101-9	1108	25	1.730	113
RP-101-10	1109	50	1.230	143
RP-101-11	1110	75	1.000	134
RP-101-12	1111	100	.866	180
RP-101-13	1112	200	.612	186
RP-101-14	1113	300	.500	217
RP-101-15	1114	400	.433	230
RP-101-16	1115	500	.388	291
RP-101-17	1116	750	.316	345
RP-101-18	1117	1,000	.274	351
RP-101-19	1118	1,500	.224	434
RP-101-20	1119	2,000	.194	450
RP-101-21	1120	2,500	.173	448
RP-101-22	1121	5,000	.123	590
RP-101-23	1122	7,500	.100	671
RP-101-24	1123	10,000	.087	702

RE. PER. UNIT	USED ON			RP-101	A
	MODEL	ASS'Y. NO.	DATE		
	GPT-40K	RP-101-3	12-12-59		



F = FLATTED S = SLOTTED R = ROUND

HOLES FOR NO. 8 SCREWS BUSHING 3/8"-32 THD. WITH 3/32" THICK HEX. NUT

ROTATION: 300°

NOTE:
NONTURN LOCKING LUG REQUIRES 3/16 HOLE 1/2 BELOW ϕ OF SHAFT.

OHMITE MFG. CO. MODEL "G" (MFG. NO'S. IN CHART ARE FOR FLATTED SHAFT)

NOMANCLATURE SHOULD BE IN THE FOLLOWING FORM.

RP-101-2 - F
BASIC PART * SHAFT STYLE:
F=FLATTED R=ROUND
S=SLOTTED

REQ.	ITEM	PART NO.	DESCRIPTION	SYMBOL
			THE TECHNICAL MATERIEL CORP.	
			MAMARONECK, NEW YORK	
			RHEOSTAT	
			75 WATT	
A	SHAFT STYLES ADDED	2/5/60	<i>cy</i>	<i>HD amp</i>
ISSUE	ITEM	CHANGED FROM	DATE	CH. NO. DRAFTS CHECKER ENG. APP.
TOLERANCES		SCALE:		
DEC. DIM. \pm		MAXIMUM ALLOWABLE TOLERANCES HAVE BEEN DETERMINED AND ANY DEVIATIONS WILL BE CAUSE FOR REJECTION. REMOVE ALL BURRS AND SHARP EDGES		
FRAC. DIM. \pm				
ANGULAR DIM. \pm				
TYPE & TEMPER		HEATTREAT. SPEC.	DRAWN	CHECKED
FINISH & SPEC. NO.		ELEC. DES. APP	MECH. DES. APP	
				RP-101 A