

RL-198

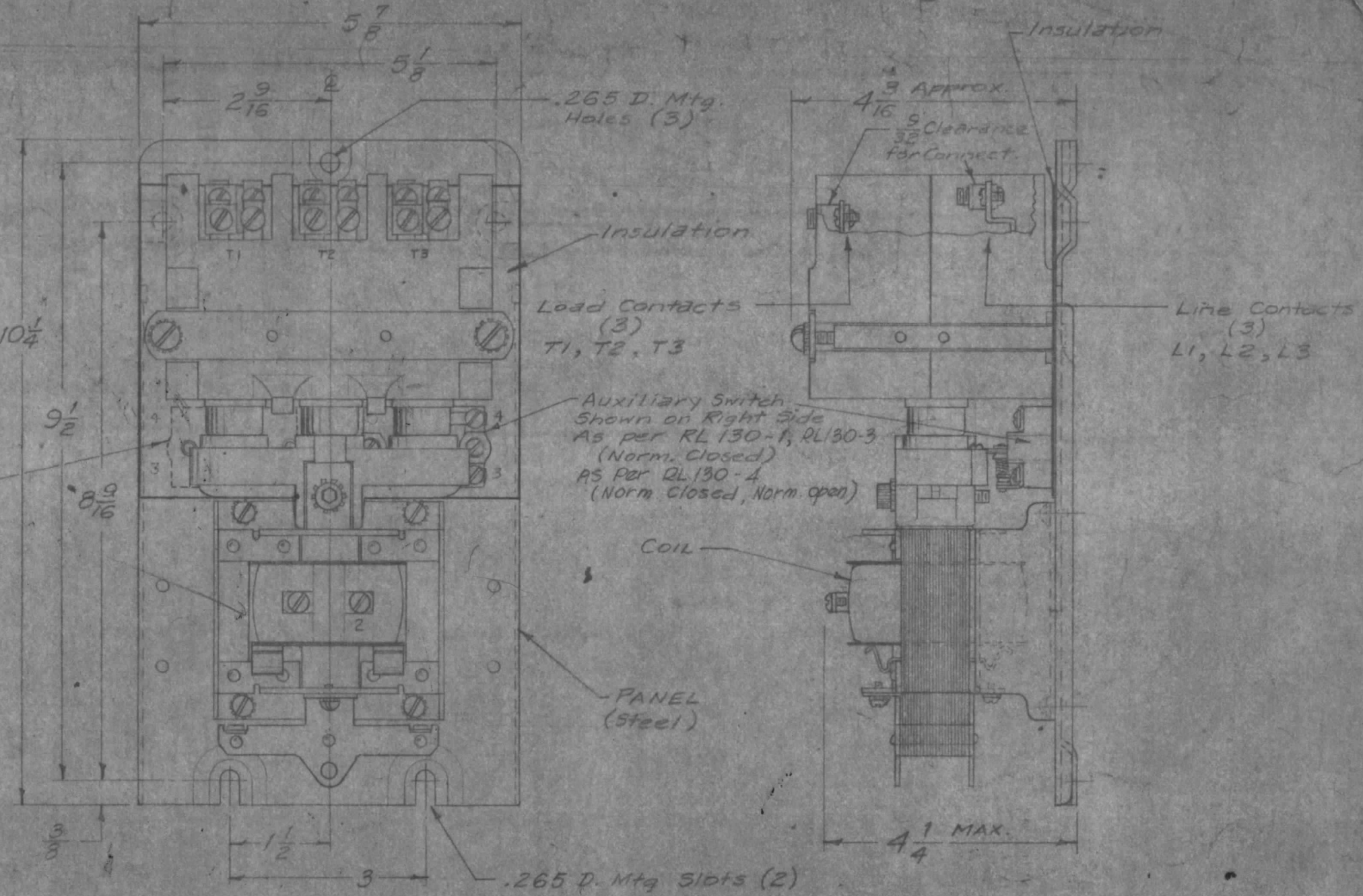
TMC PART NO.	MFG. PART NO.	DESCRIPTION
RL 130-1	4452 D30201 SIZE 2 WITH →	Auxiliary Switch Mounted on Right Side of Panel as shown in Pictorial, with Normally Closed Contacts.
RL 130-2	4452 D30201 SIZE 3 WITH →	Auxiliary Switch Mounted on Left Side of Panel as indicated in Dotted Lines, with Normally Open Contacts.
RL 130-3	4452 D30201 SIZE 2 WITH →	AUXILIARY SWITCH MOUNTED ON LEFT & RIGHT SIDE OF PANEL, LEFT SIDE TO BE NORMALLY OPEN CONTACTS & RIGHT SIDE TO BE NORMALLY CLOSED CONTACTS.
RL 130-4	4452 D30201 WITH →	AUXILIARY SWITCH MOUNTED ON RIGHT SIDE OF PANEL WITH NORMALLY CLOSED AND NORMALLY OPEN CONTACTS. AUXILIARY SWITCH MOUNTED ON LEFT SIDE OF PANEL WITH NORMALLY OPEN CONTACTS.
RL 130-5	4452 D30201	BASIC CONTACTOR WITH NO AUXILIARY CONTACTS.

Auxiliary Switch will be on left side for RL130-2, RL130-3, (Norm. Open) RL130-4

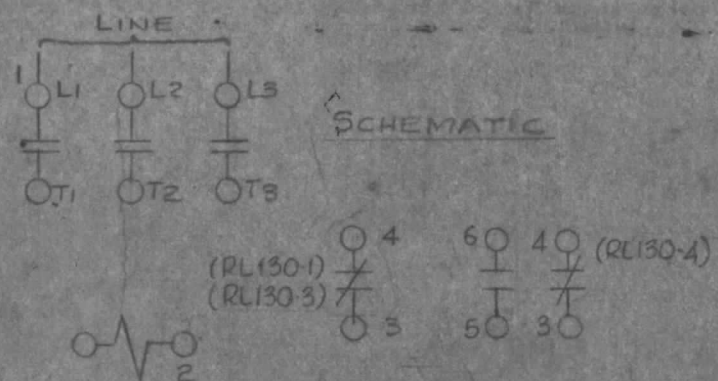
MAXIMUM RATING			
SINGLE PHASE		THREE PHASE	
VOLTS	STARTING H.P.	VOLTS	STARTING H.P.
110	3	110	7 1/2
220	7 1/2	220	15

AUXILIARY SWITCH RATINGS (CONTACTS)
 1.5AMP @ 220VAC / 15AMP INRUSH
 3AMP @ 110VAC / 30AMP INRUSH

Purch. Note - Use TMC Dwg. No. PG-183 for Contact Kit (Single)
 Use TMC Dwg. No. 70-194 for Coil Kit



SPECIFICATIONS:
 COIL - Type 200L-2; 208V / 400 HZ
 CONTACTS - SILVER



NOT FOR PRODUCTION
 Engineering Approval Required For Release

ISSUE ITEM	CHANGED FROM	DATE	CH. NO.	DRAFTS	CHECKER	ENG. APP.
1	RL130-5 ADDED TO CHART	1-6-65	15266	1/1	RLB	DD
1	AUX. SWITCH RATINGS ADDED	13-12-65	3710	1/1	RLB	DD

TOLERANCES: DEC. DIM. ±, FRAC. DIM. ±, ANGULAR DIM. ±

SCALE: 5-40-32

MAXIMUM ALLOWABLE TOLERANCES HAVE BEEN DETERMINED AND ANY DEVIATIONS WILL BE CAUSE FOR REJECTION. REMOVE ALL BURRS AND SHARP EDGES

REQ. PER UNIT	MODEL	PROJECT NO.	ASSY. NO.	DATE	USED ON
2	GPT10KLF	AUX. FRAME	AX530	1-6-65	
1EA.	GPT-10K	AUX. FRAME		4-17-59	

REQ. ITEM	PART NO.	DESCRIPTION	SYMBOL
THE TECHNICAL MATERIEL CORP. MAMARONECK, NEW YORK			
RELAY CONTACTOR, MAGNETIC			
MATERIAL		16 1/4 1/59	RLB
TYPE & TEMPER. HEAT TREAT. SPEC.		DRAWN	CHECKED
FINISH & SPEC. NO.		ELEC. DES. APP.	MECH. DES. APP.

RL-198

RL-198

TMC PART NO.	MFG. PART NO.	DESCRIPTION
RL 130-1	4452 D30201 SIZE 2 WITH →	Auxiliary Switch Mounted on Right Side of Panel as shown in Pictorial, with Normally Closed Contacts.
RL 130-2	4452 D30201 SIZE 2 WITH →	Auxiliary Switch Mounted on Left Side of Panel as indicated in Dotted Lines, with Normally Open Contacts.
RL 130-3	4452 D30201 SIZE 2 WITH →	AUXILIARY SWITCH MOUNTED ON LEFT & RIGHT SIDE OF PANEL. LEFT SIDE TO BE NORMALLY OPEN CONTACTS & RIGHT SIDE TO BE NORMALLY CLOSED CONTACTS.
RL 130-4	4452 D30201 WITH →	AUXILIARY SWITCH MOUNTED ON RIGHT SIDE OF PANEL WITH NORMALLY CLOSED AND NORMALLY OPEN CONTACTS. AUXILIARY SWITCH MOUNTED ON LEFT SIDE OF PANEL WITH NORMALLY OPEN CONTACTS.
RL 130-5	4452 D30201	BASIC CONTACTOR WITH NO AUXILIARY CONTACTS.

Auxiliary Switch will be on left side for RL130-2, RL130-3, (Norm. Open) RL130-4

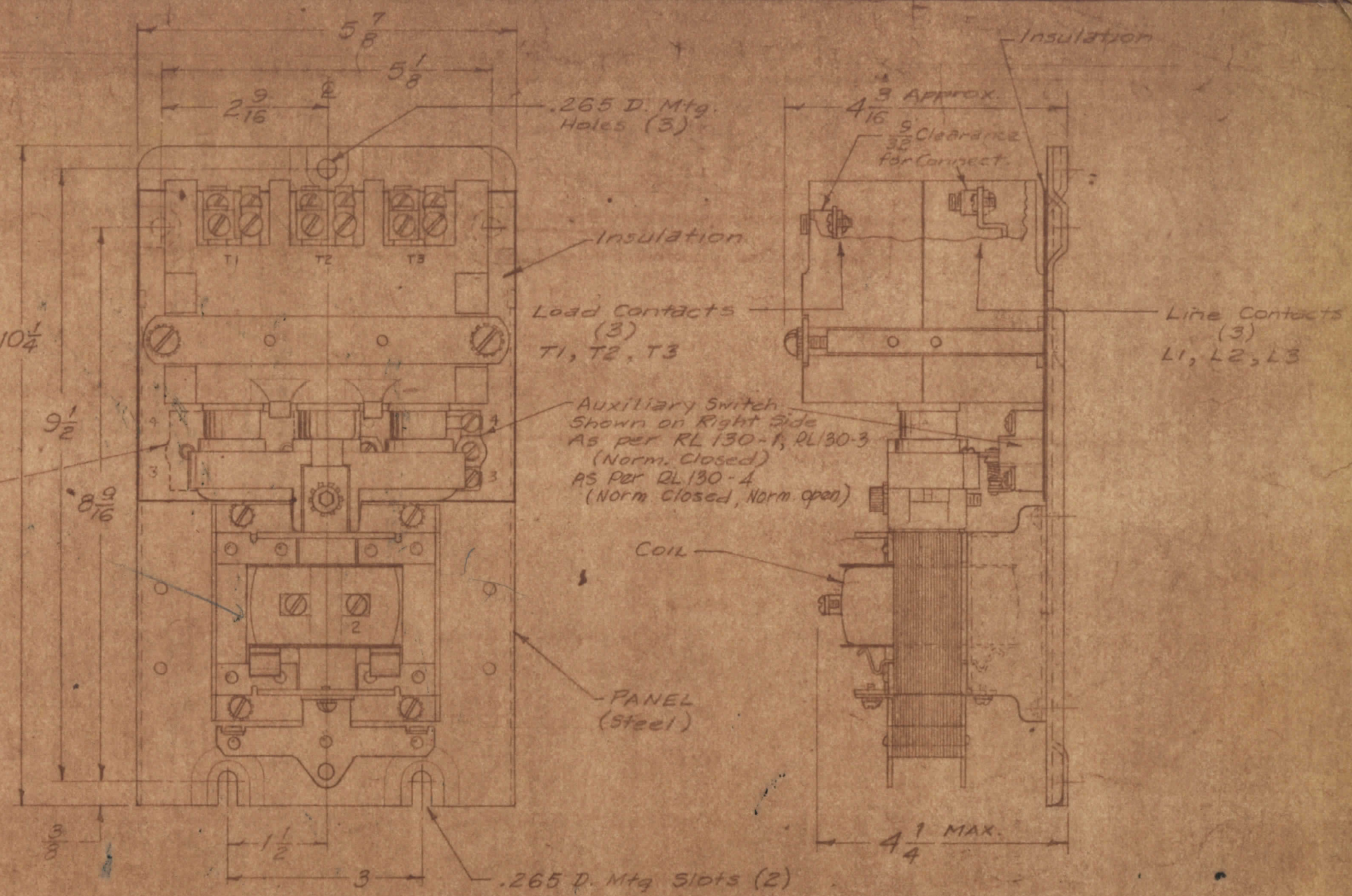
MAXIMUM RATING			
SINGLE PHASE		THREE PHASE	
VOLTS	STARTING H.P.	VOLTS	STARTING H.P.
110	3	110	7 1/2
220	7 1/2	220	15

AUXILIARY SWITCH RATINGS (CONTACTS)

1.5 AMP @ 220VAC / 15 AMP INRUSH
3 AMP @ 110VAC / 30 AMP INRUSH

Purch. Note - Use TMC Dwg. No. PG-153 for Contact Kit (Single)

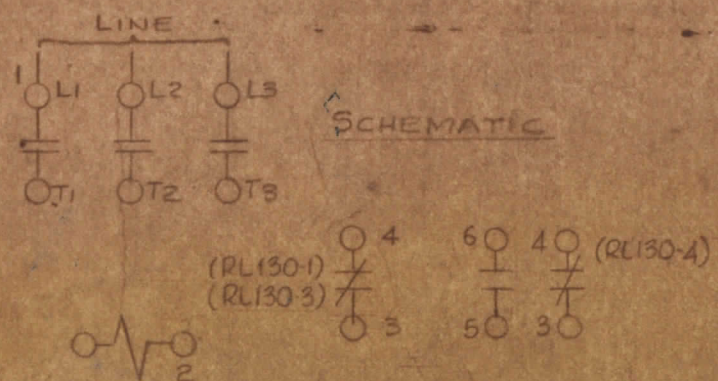
Use TMC Dwg. No. 70-194 for Coil Kit



SPECIFICATIONS:

COIL - Type 200L-2; 208V / 400 HZ

CONTACTS - SILVER



NOT FOR PRODUCTION
Engineering Approval Required For Release

ISSUE ITEM	CHANGED FROM	DATE	CH. NO.	DRAFTS	CHECKER	ENG. APP.
1	RL130-5 ADDED TO CHART	3-6-65	15266	1/1	RLB	DB
	RL130-3, 4 ADD. TO CHART, GPT10KLF					
	ADD. TO PROJ. 3-11-65 TO SWRCH CALLOUTS	7-5-65	13652	1/1	RLB	DB
1	AUX. SWITCH RATINGS ADDED	13-12-65	3710	1/1	RLB	DB

2	GPT10KLF	AUX. FRAME	AX530	1-6-65
1Ea.	GPT-10K	AUX. FRAME		4-17-59
REQ. PER UNIT	MODEL	PROJECT NO.	ASSY. NO.	DATE
				USED ON

REQ. ITEM	PART NO.	DESCRIPTION	SYMBOL
THE TECHNICAL MATERIEL CORP. MAMARONECK, NEW YORK			
RELAY CONTACTOR, MAGNETIC			
STOCK SIZE			
MATERIAL			
TYPE & TEMPER. HEAT TREAT. SPEC.		DRAWN	CHECKED
FINISH & SPEC. NO.		ELEC. DES. APP. MECH. DES. APP.	

RL-198