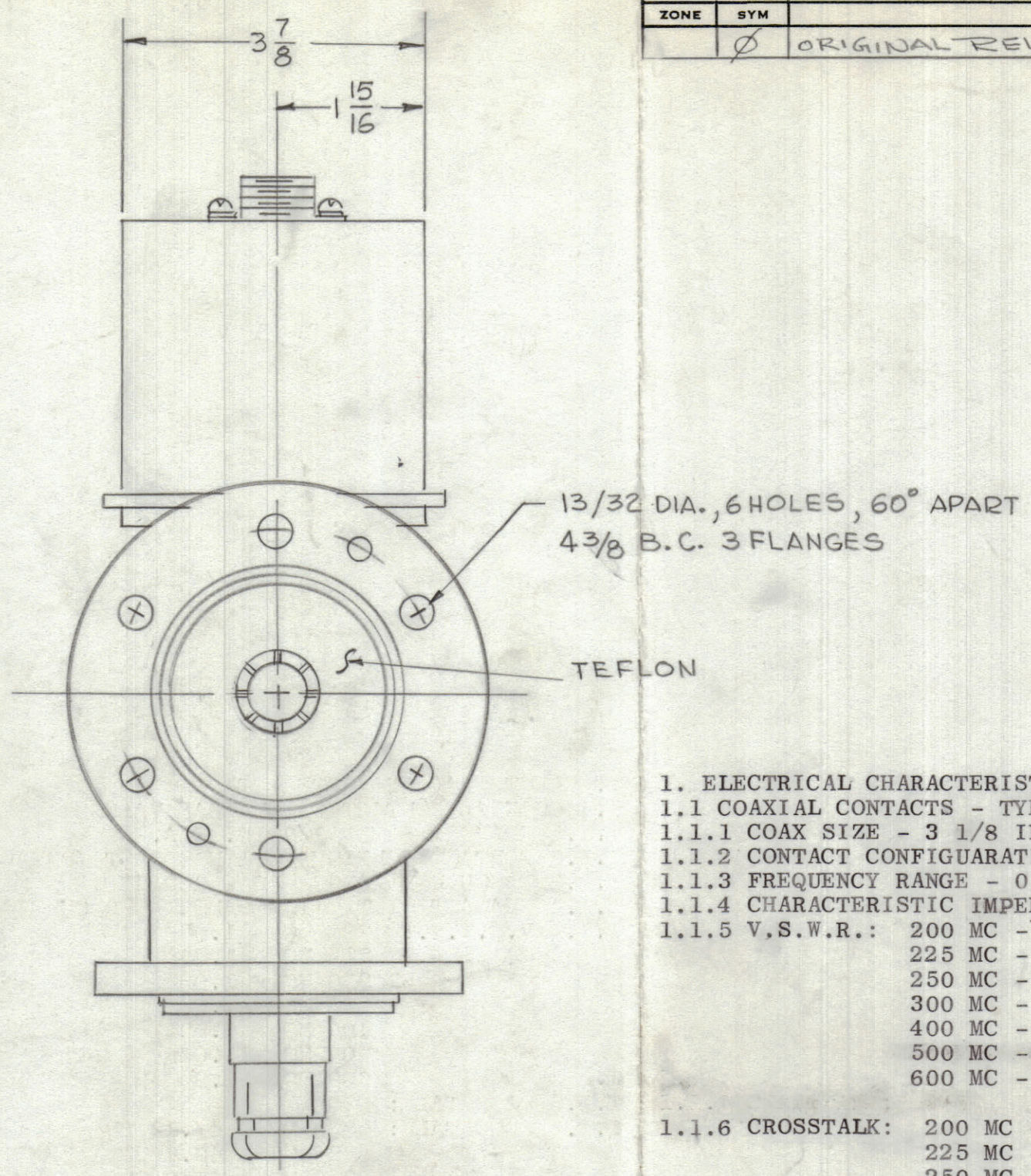
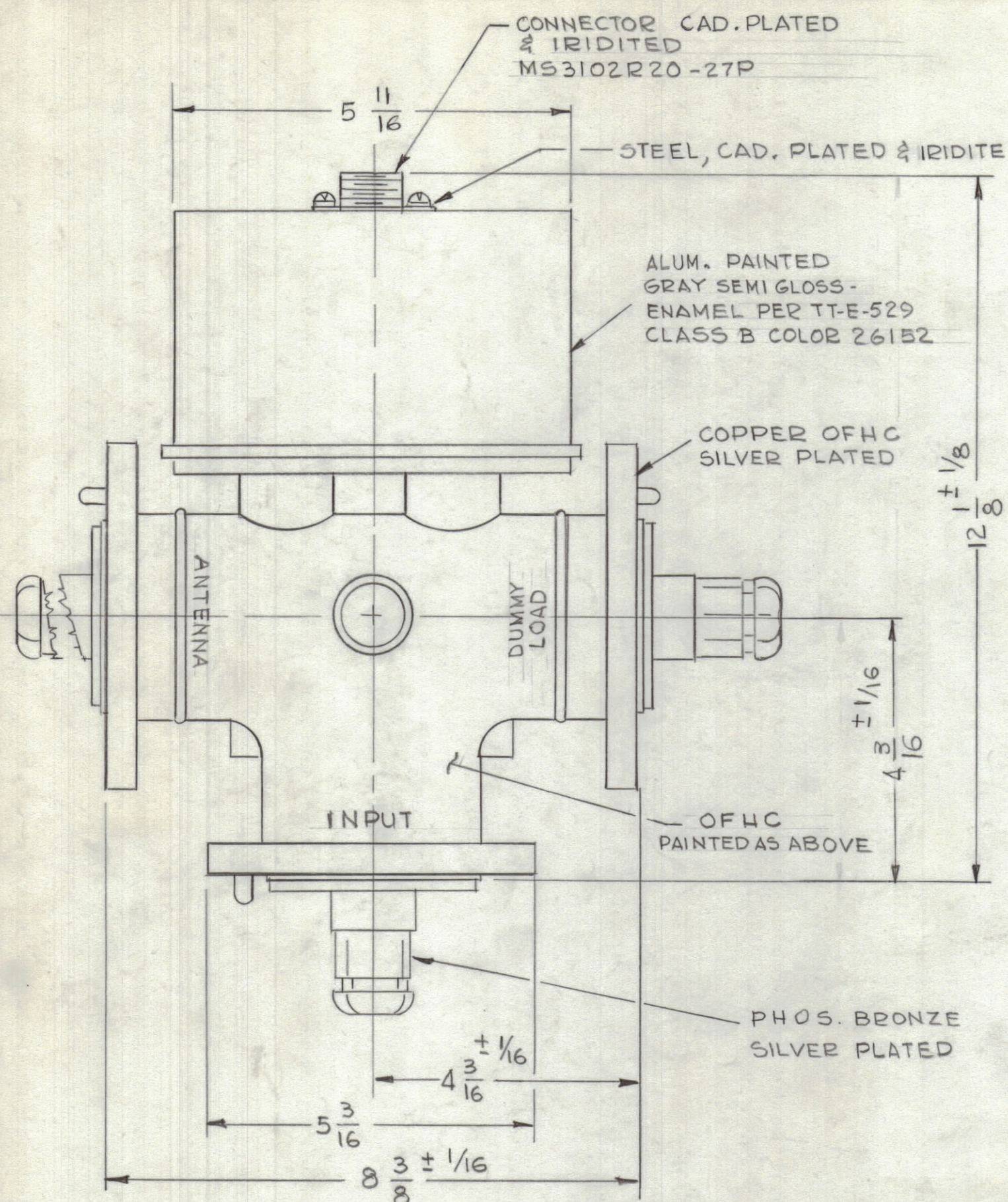


REVISIONS						
ZONE	SYM	DESCRIPTION	DATE	E.M.N. NO.	DRAFT	APPD
Ø		ORIGINAL RELEASE FOR PROD.	2/1/66	Ø		<i>Jhe</i>

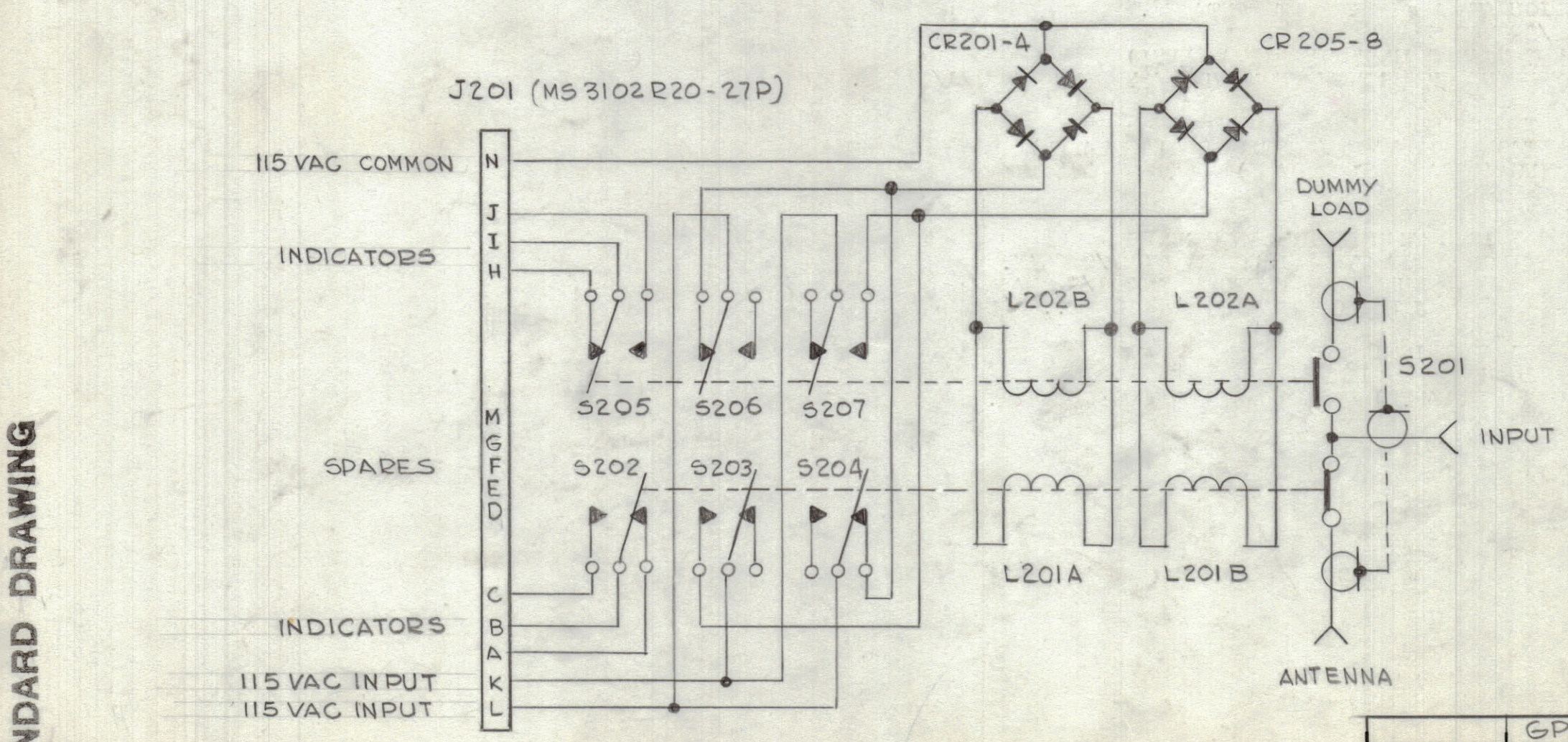


1. ELECTRICAL CHARACTERISTICS
  - 1.1 COAXIAL CONTACTS - TYPICAL VALUES
    - 1.1.1 COAX SIZE - 3 1/8 IN. DIA.
    - 1.1.2 CONTACT CONFIGURATION - SPDT (BREAK BEFORE MAKE)
    - 1.1.3 FREQUENCY RANGE - 0 - 600 MC
    - 1.1.4 CHARACTERISTIC IMPEDANCE - 50 OHMS
    - 1.1.5 V.S.W.R.:
 

200 MC - 1.03
225 MC - 1.04
250 MC - 1.05
300 MC - 1.05
400 MC - 1.06
500 MC - 1.07
600 MC - 1.09
    - 1.1.6 CROSSTALK:
 

200 MC - 47.12 DB
225 MC - 46.1 DB
250 MC - 45.0 DB
300 MC - 43.6 DB
400 MC - 41.2 DB
500 MC - 39.2 DB
600 MC - 37.5 DB
    - 1.1.7 INSERTION LOSS - LESS THAN 0.01 DB.
    - 1.1.8 POWER RATING - 20 KW AVERAGE AT 600 MC.
  - 1.2 AUXILIARY CONTACTS (INDICATORS)
    - 1.2.1 CONTACT CONFIGURATION - TWO SPDT CONTACTS.
    - 1.2.2 RATING: 125/250VAC 5 AMPS  
30VDC 3 AMPS INDUCTIVE (SEA LEVEL)
    - 1.2.3 MAXIMUM CONTINUOUS CURRENT THROUGH AUXILIARY CONTACTS 1 1/2 AMP.
  - 1.3 ACTUATOR CHARACTERISTICS
    - 1.3.1 ACTUATING VOLTAGE - 115VACR (RECTIFIED INTERNALLY)
    - 1.3.2 TYPE - LATCHING (BREAK BEFORE MAKE)
2. MECHANICAL CHARACTERISTICS
  - 2.1 TRANSFER TIME - LESS THAN 50 MILLISECONDS
  - 2.2 ACCESSORY FITTINGS - EIA TYPE FLANGE FOR 3 1/8 COAX.  
- BULLET CONNECTOR FOR 3 1/8 COAX  
JENNINGS DRAWING #VSM2887. 3 SUPPLIED
3. ENVIRONMENTAL CHARACTERISTICS
  - 3.1 SALT SPRAY - 100HRS PER MIL -E-5272
  - 3.2 SHOCK - 25 G'S (3 PLANES) PER MIL-E-4970 PROCEDURE 2.

RL172



STANDARD DRAWING

NOTES

GPT-200K		
Q'TY./UNIT	MODEL USED ON	ASS'Y. NO.
SCALE 1:2	CODE C	S401-4B (5502)

THE CONTENTS OF THIS DRAWING ARE THE EXCLUSIVE PROPERTY OF THE TECHNICAL MATERIEL CORP. ITS UNAUTHORIZED USE OR REPRODUCTION IN WHOLE OR IN PART IS STRICTLY FORBIDDEN.

REQ'D.	ITEM	PART NUMBER	DESCRIPTION	SYMBOL
BUDETTI LIST OF MATERIAL				
MATERIAL			THE TECHNICAL MATERIEL CORP. MAMARONECK, NEW YORK	
FINISH			RELAY-VACUUM COAXIAL	
UNLESS OTHERWISE SPECIFIED DIMENSIONS ARE IN INCHES AND INCLUDE CHEMICALLY APPLIED OR PLATED FINISHES		DRAWN G.D.L.	DATE 1-21-66	FINAL APPROVAL <i>[Signature]</i>
DECIMALS X ± .05 XX ± .01 XXX ± .005		CHECKED <i>[Signature]</i>	DATE 2-1-66	DATE 2/1/66
FRACTIONS ± 1/32 ANGLES ± 1°		ELECT. DES. <i>[Signature]</i>	DATE 2/1/66	REV. LTR. Ø
TOLERANCES		MECH. DES. <i>[Signature]</i>	DATE	SHEET