

IF IT IS FOUND DESIRABLE TO CHANGE ANY TOLERANCE OR OTHER DETAIL SPECIFIED ON THIS DRAWING NOTIFY THE PURCHASER PROMPTLY.

MAXIMUM ALLOWABLE TOLERANCES HAVE BEEN DETERMINED AND DEVIATIONS WILL BE CAUSE FOR REJECTION. REMOVE ALL BURRS AND SHARP EDGES

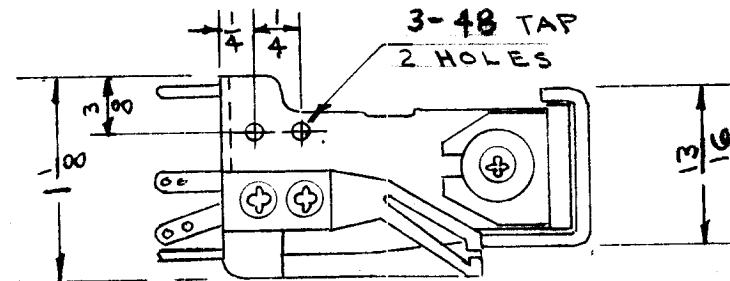
RELEASED

RL-105

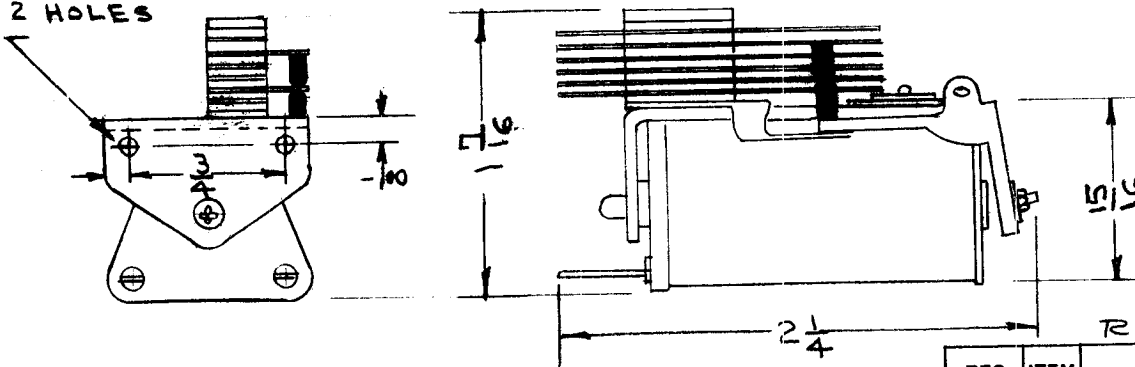
USED ON

MODEL	PROJECT NO.	ASS'Y. NO.	DATE
AMD-1	144	A-227	9-22-52
RL-110	170	A-543	9-25-53
HFA-1	1069	A-2398 A-2399	7-24-62

NOTE  
DIMENSIONS  
FOR REF. ONLY



6-32 TAP  
2 HOLES



SPECIFICATIONS

CONTACT DP DT.  
20,000 OHMS.  
57,800 TURNS OF #44 ENAMEL -  
COVERED WIRE.  
COIL ACTIVATING POWER .32 W  
OPERATING VOLTAGE 80V. DC APPROX.

REF: C.P. CLARE CO. AG4070

REQ.	ITEM	PART NO.	DESCRIPTION	SYMBOL			
			THE TECHNICAL MATERIEL CORP. MAMARONECK. NEW YORK				
STOCK SIZE			RELAY				
MATERIAL		WEIGHT PER PC.					
B	2	.32 WAS .07	9/26/52	2			
	1	VOLT. WAS 55 VDC	9/26/52	2			
A	1	REF: AG4070 Added	8/28/52	1			
ISSUE	ITEM	CHANGED FROM	DATE	CN. NO.	DRAFTS	CHECKER	ENG. APP.
TOLERANCES			SCALE FULL SIZE				
ALL OTHERS			DEC. DIM. ± FRAC. DIM. ± ANGULAR DIM. ±				
			DRILL, PUNCH, COMMERCIAL STOCK SIZES AND MANUFACTURERS TOLERANCES ARE NOT INCLUDED.				
HEAT TREAT. SPEC.		FINISH & SPEC. NO.		DRAWN		ELEC. DES. APP.	
				G.T.O		MECH. DES. APP.	
CHECKED		FINAL APPROVAL		DRAWN		9-22-52	
		RL-105		B			