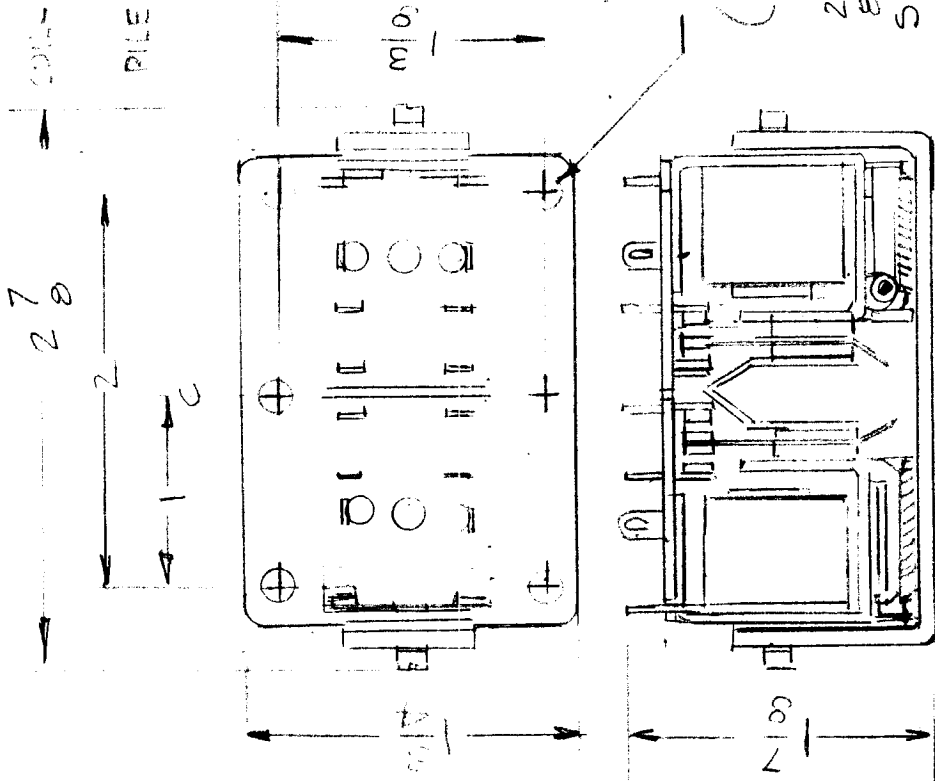


APPLICATION			REVISIONS						
QTY	MODEL USED ON	ASS'Y NO.	LTR	DESCRIPTION	DATE	E.M.N.O	DRAFT	CHKD	APPD
1	OPT 101K	A5843	Ø	ORIGINAL RELEASE	3/19/52				RL

NOTE:
 WHEN USED TO REPLACE RL123
 MOUNTING PLATE RL1293 MUST BE SUPPLIED
 (ARI01)

ELECTRICAL SPECS.

COIL - LATCH 2000Ω APPROX
 UNLATCH 70Ω APPROX
 PILE UP - 4 FORM C (4 PDT)
 CONTACTS - 10 AMP 125VAC
 LATCH OPERATE 190V 50/60 CPS
 UNLATCH -.155 AMPERES
 OPERATE



UNLESS OTHERWISE SPECIFIED DIMENSIONS ARE IN INCHES AND INCLUDE CHEMICALLY APPLIED OR PLATED FINISHES	REQ'D ITEM	PART NUMBER	DESCRIPTION	SYM.
DECIMALS .X ± .05 .XX ± .01 .XXX ± .005	LIST OF MATERIAL			
FRACTIONS 1/64 ANGLES 9° 30'	THE TECHNICAL MATERIEL CORP. MAMARONECK, NEW YORK			
MATERIAL	RELAY ASSEMBLY REF. DRAWING 5401			
FINISH	MAMARONECK, NEW YORK			
NOTICE TO PERSONS RECEIVING THIS DRAWING THE TECHNICAL MATERIEL CORPORATION claims proprietary right in the material disclosed hereon. This drawing is issued in confidence for engineering information only and may not be reproduced or used to manufacture anything shown hereon without permission from THE TECHNICAL MATERIEL CORPORATION to the user. This drawing is loaned for mutual assistance and is subject to recall at any time.				
FINAL APPROVAL MECH. DES. ELECT. DES. CHECKED DRAWN GDL	DATE 3/19/52	PART NUMBER	DESCRIPTION	SYM.
SCALE	SIZE	CODE IDENT. NO.	DWG NO.	ISSUE
	A	82679	RL202	Ø