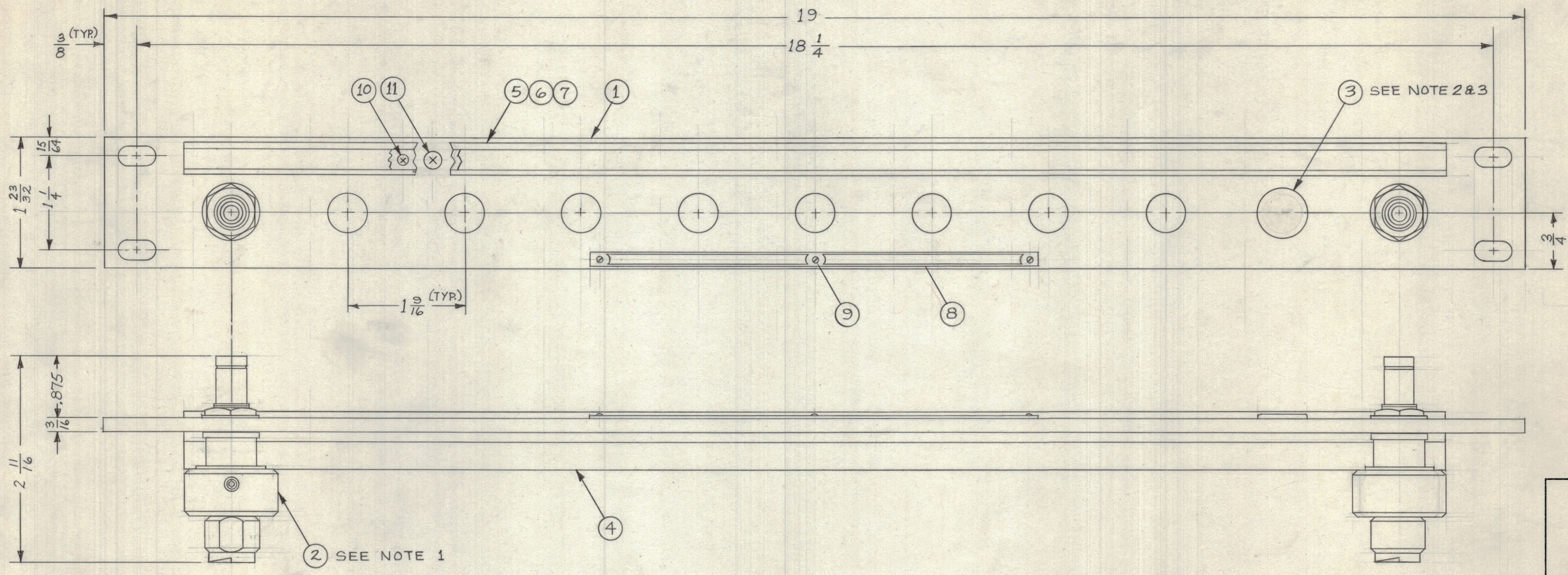


ZONE		SYM	DESCRIPTION	DATE	E.M.N. NO.	DRAFT	CHKD	APPD
		Ø	ORIGINAL RELEASE	5/6/69	Ø	J De		



MODEL	QUAN. ITEM 2	QUAN. ITEM 3
QDP-SF7500A3X1	1	10
QDP-SF7500A3X2	2	9
QDP-SF7500A3X3	3	8
QDP-SF7500A3X4	4	7
QDP-SF7500A3X5	5	6
QDP-SF7500A3X6	6	5
QDP-SF7500A3X7	7	4
QDP-SF7500A3X8	8	3
QDP-SF7500A3X9	9	2
QDP-SF7500A3X10	10	1
QDP-SF7500A3X11	11	0

NOTE:

- CONNECTORS ARE MOUNTED FROM LEFT TO RIGHT.
- WHEN CONNECTOR MOUNTING HOLES ARE NOT UTILIZED, PLUG BUTTONS (ITEM 3) ARE TO BE MOUNTED ON FACE OF FRONT PANEL.
- REFER TO CHART FOR APPLICATION OF PLUG BUTTON (ITEM 3) WHEN REQUIRED.

REQ'D.	ITEM	PART NUMBER	DESCRIPTION	SYMBOL
X	12	S-345/SF(1/2" 70)	TEST PROCEDURE & SPEC	
6	11	SCFP0632BN5	SCREW, MACHINE	
6	10	SCFP0348BN3	SCREW, MACHINE	
3	9	SFB025.6 SN3	SCREW, THREAD CUTTING	
1	8	NP-878	NAMEPLATE, IDENTIFICATION	
1	7	PX-396-17	GUARD, TAB	
1	6	PR-101-17	TAB, PAPER	
1	5	MS-1184	HOLDER, CARD	
1	4	PM-486	BRACE, PANEL	
SEE CHART	3	HB-101-3	PLUG, BUTTON	
SEE CHART	2	JJ-	ADAPTOR, CONNECTOR	
1	1	MS-	MACHINING, FRONT PANEL	

LIST OF MATERIAL

MATERIAL: ALUMINUM

FINISH: TMC SMOOTH GRAY SEMI-GLOSS ENAMEL

UNLESS OTHERWISE SPECIFIED DIMENSIONS ARE IN INCHES AND INCLUDE CHEMICALLY APPLIED OR PLATED FINISHES

DECIMALS: X ± .05, .XX ± .01, .XXX ± .005

FRACTIONS: ± 1/64, ANGLES ± 0° 30'

TOLERANCES

THE TECHNICAL MATERIEL CORP. MAMARONECK, NEW YORK

TITLE: PATCH PANEL, R.F. 1/2-70-2 SPIROFOAM CABLE TO QDM

DRAWN: M. TANTILLO, DATE: 8-1-63, CHECKED: [Signature], DATE: [Blank]

FINAL APPROVAL: [Signature], DATE: 5/6/69

ELECT. DES. DATE: [Blank]

MECH. DES. DATE: [Blank]

QDP-SF7500A3X11

SHEET [Blank] REV. LTR. [Blank]

SEE CHART QDP-SF7500A3X-

QTY./UNIT	MODEL USED ON	ASS'Y. NO.
SCALE	CODE	

THE CONTENTS OF THIS DRAWING ARE THE EXCLUSIVE PROPERTY OF THE TECHNICAL MATERIEL CORP. ITS UNAUTHORIZED USE OR REPRODUCTION IN WHOLE OR IN PART IS STRICTLY FORBIDDEN.

NOTES