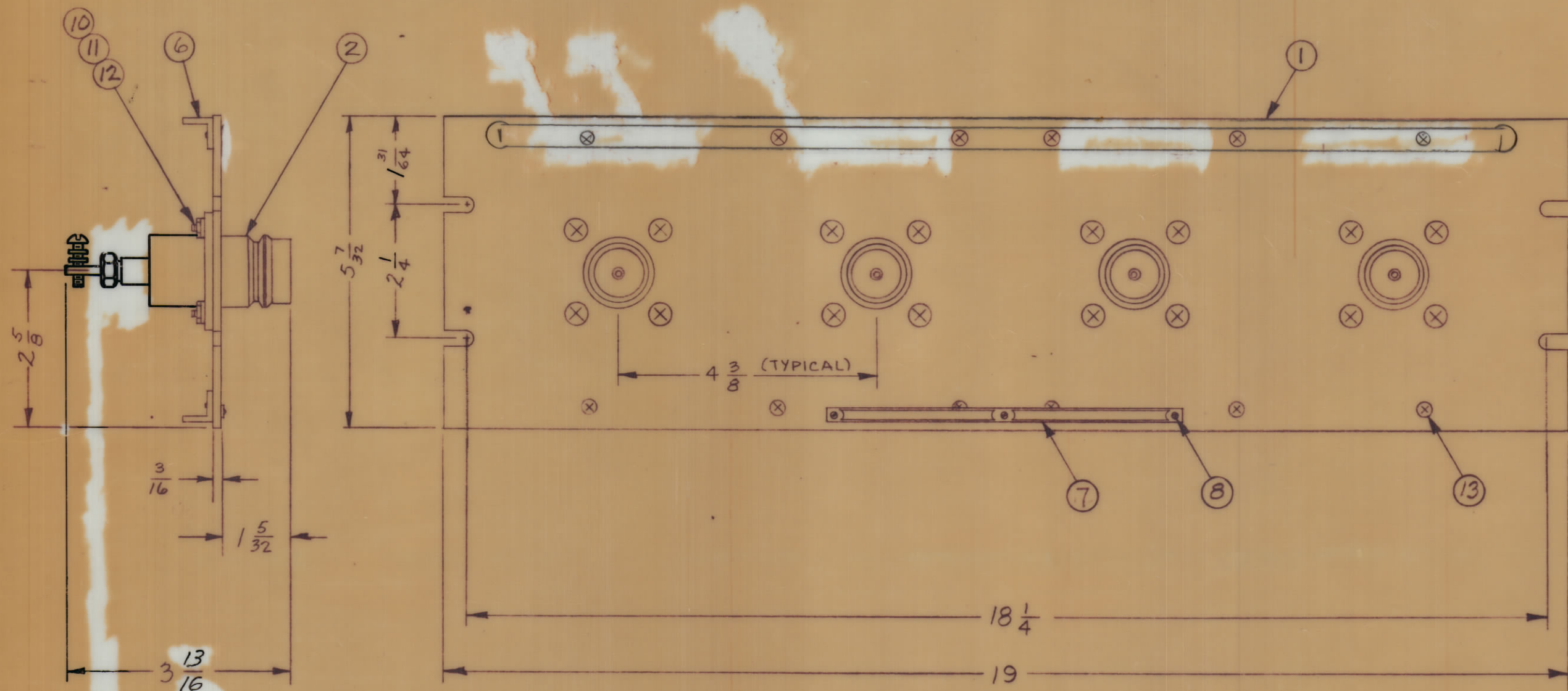


REVISIONS							
ZONE	SYM	DESCRIPTION	DATE	E.M.N. NO.	DRAFT	CHKD	APPD
X		EXP. RELEASE	11/4/69		KH	GD	
Ø		ORIGINAL RELEASE FOR PRODUCTION	11/4/69		KH	WB	
A		ITEM 3 MS 576 & ITEM 9 DELETED NET. UPDATED	4-5-84	22051	GDL		



QDP-PA-201
A

REQ'D.	ITEM	PART NUMBER	DESCRIPTION	SYMBOL
X	14	S-721	TEST PROCEDURE	
	12	13	SCFP0632BN5	SCREW, MACHINE
	16	12	NTH 1032 BN12	NUT, HEXAGON
	16	11	LWE 10 MRN	WASHER, LOCK, EXTERNAL
	16	10	SCFP1032 BN9	SCREW, MACHINE
	9			
	3	8	SFB 0256 SN3	SCREW, THREAD CUTTING
	1	7	NP-250	NAMEPLATE, IDENTIFICATION
	2	6	PM-490	BRACE, PANEL
	1	5	PX-396-17	GUARD, TAB
	1	4	PR 101-17	TAB, PAPER
	3			
	4	2	JJ-177	CONNECTOR, RECEPTACLE
	1	1	MS-1078-1	MACHINING, FRONT PANEL

LIST OF MATERIAL			
MATERIAL	ALUMINUM	THE TECHNICAL MATERIEL CORP. MAMARONECK, NEW YORK	
FINISH	TMC SMOOTH GRAY SEMI-GLOSS ENAMEL	TITLE PATCH PANEL, QUICK DISCONNECT QDL TO SCREW TERMINAL	
UNLESS OTHERWISE SPECIFIED DIMENSIONS ARE IN INCHES AND INCLUDE CHEMICALLY APPLIED OR PLATED FINISHES	DRAWN <i>[Signature]</i>	DATE 11/4/69	FINAL APPROVAL <i>[Signature]</i>
DECIMALS X ± .05 XX ± .01 XXX ± .005	TOLERANCES	ELECT. DES <i>[Signature]</i>	DATE 11/4/69
FRACTIONS ± 1/64 ANGLES ± 0° 30'		MECH. DES <i>[Signature]</i>	DATE
		QDP-PA-201	
		SHEET	
		REV. LTR.	

1	QDP-PA-201	ASS'Y. NO.
Q'TY./UNIT	MODEL USED ON	
SCALE	CODE	

NOTES

THE CONTENTS OF THIS DRAWING ARE THE EXCLUSIVE PROPERTY OF THE TECHNICAL MATERIEL CORP. ITS UNAUTHORIZED USE OR REPRODUCTION IN WHOLE OR IN PART IS STRICTLY FORBIDDEN.