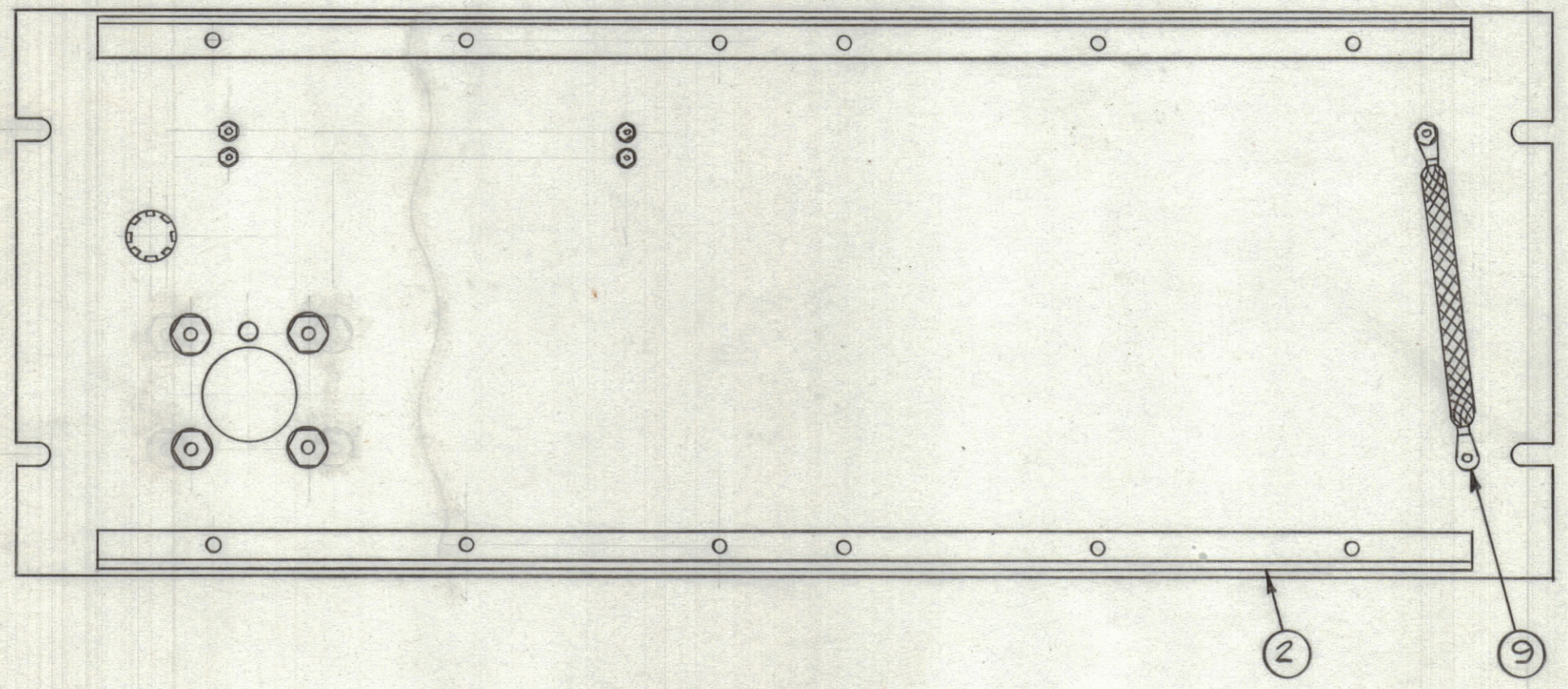
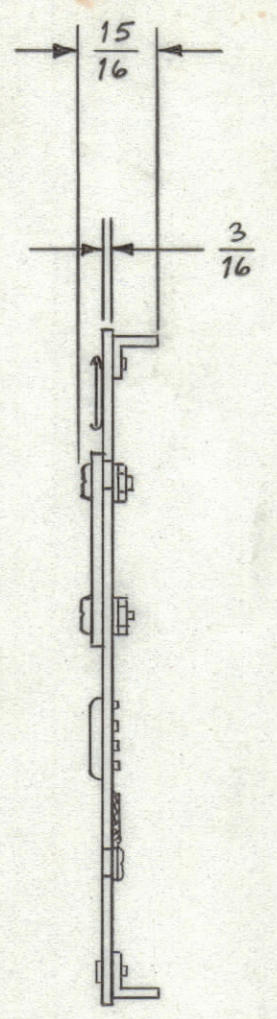
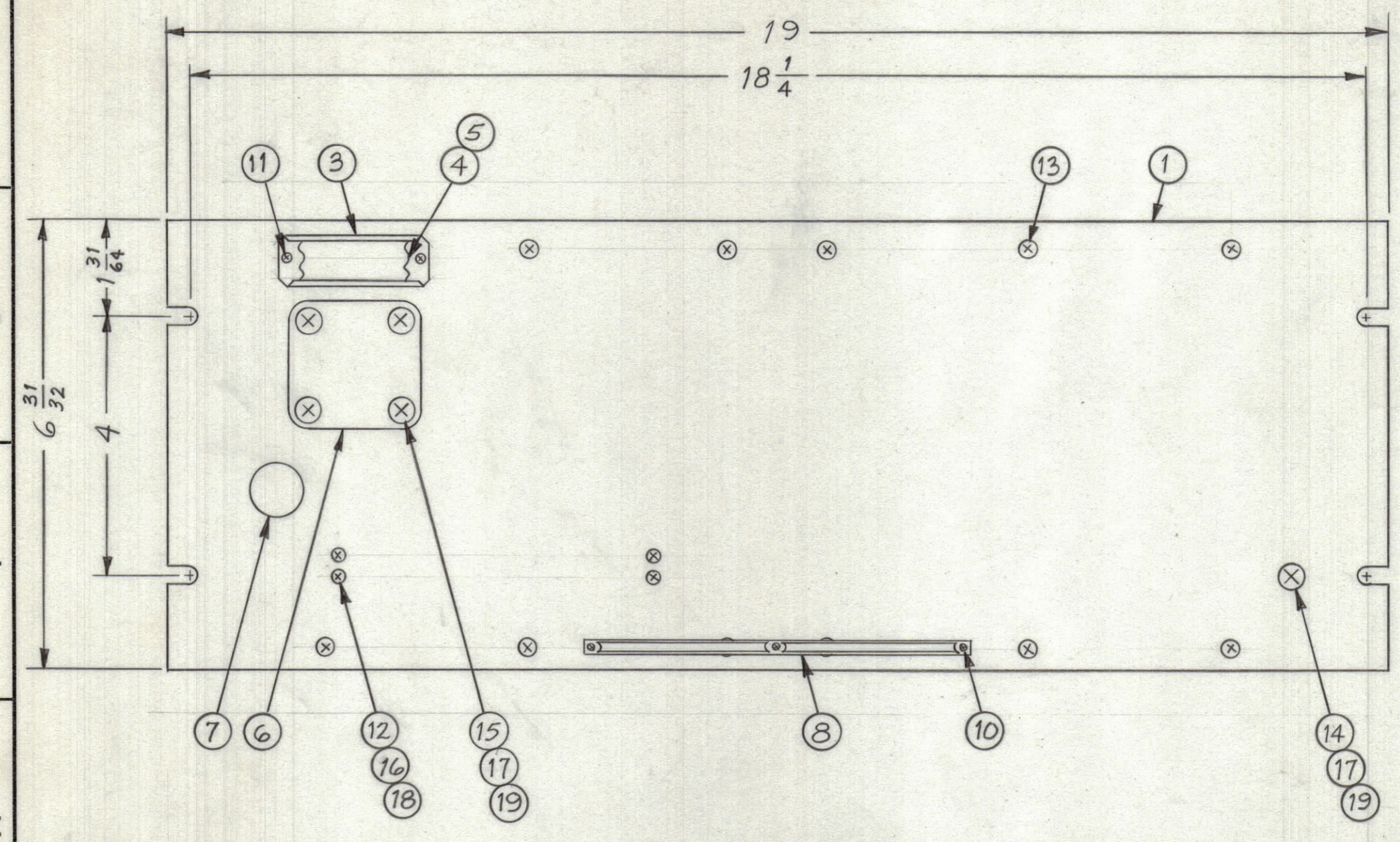


REVISIONS							
ZONE	SYM	DESCRIPTION	DATE	E.M.N. NO.	DRAFT	CHKD	APPD
	0	ORIGINAL RELEASE FOR PRODUCTION	3-3-64		A.M.		



REQ'D.	ITEM	PART NUMBER	DESCRIPTION	SYMBOL
5	19	NTH1032BN12	NUT, HEX	
4	18	NTH0440BN6	NUT, HEX	
5	17	LWE10MRN	WASHER, LOCK, EXTERNAL	
4	16	LWE04MRN	WASHER, LOCK, EXTERNAL	
4	15	SCBP1032BN9	SCREW, MACHINE	
1	14	SCBP1032BN8	SCREW, MACHINE	
12	13	SCFP0632BN5	SCREW, MACHINE	
4	12	SCFP0440BN6	SCREW, MACHINE	
2	11	SCFP0348BN4	SCREW, MACHINE	
3	10	SFB0256SN3	SCREW, THREAD CUTTING	
1	9	CA-409-59-6.00	CABLE ASS'Y, GROUND	
1	8	NP-250	NAMEPLATE, IDENTIFICATION	
1	7	HB-101-3-G	PLUG BUTTON	
1	6	MS-2972	BLANK, COVER	
1	5	PX-623-1	GUARD, PLASTIC	
1	4	PR-103-1	TAB, PAPER	
1	3	MS-2669	HOLDER, CARD	
2	2	PM-490	BRACE, PANEL	
1	1	MS-3715	PANEL FRONT	

QDP-PA-105

MATERIAL		THE TECHNICAL MATERIEL CORP.	
ALUMINUM		MAMARONECK, NEW YORK	
FINISH TMC SMOOTH GRAY SEMI-GLOSS ENAMEL		TITLE PATCH PANEL, BLANK ASSEMBLY	
UNLESS OTHERWISE SPECIFIED DIMENSIONS ARE IN INCHES AND INCLUDE CHEMICALLY APPLIED OR PLATED FINISHES		DRAWN M. TANTILLO CHECKED <i>[Signature]</i>	DATE 2-24-64 DATE 2-24-64 FINAL APPROVAL <i>[Signature]</i> DATE 3/3/64
DECIMALS X ± .05 .XX ± .01 .XXX ± .005	TOLERANCES ± 1/64 ANGLES ± 0° 30'	ELECT. DES. MECH. DES. <i>[Signature]</i>	DATE 2-24-64 SHEET QDP-PA-105-0 REV. LTR.

Q'TY./UNIT	MODEL USED ON	ASS'Y. NO.
SCALE NTS	CODE A	

NOTES

THE CONTENTS OF THIS DRAWING ARE THE EXCLUSIVE PROPERTY OF THE TECHNICAL MATERIEL CORP. ITS UNAUTHORIZED USE OR REPRODUCTION IN WHOLE OR IN PART IS STRICTLY FORBIDDEN.