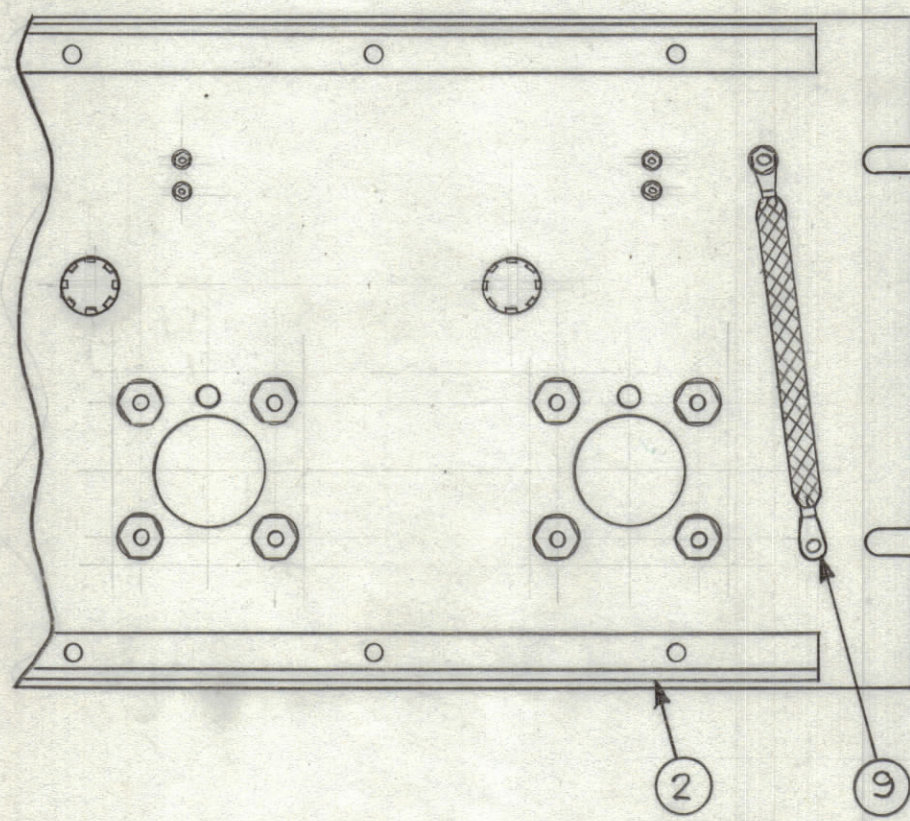
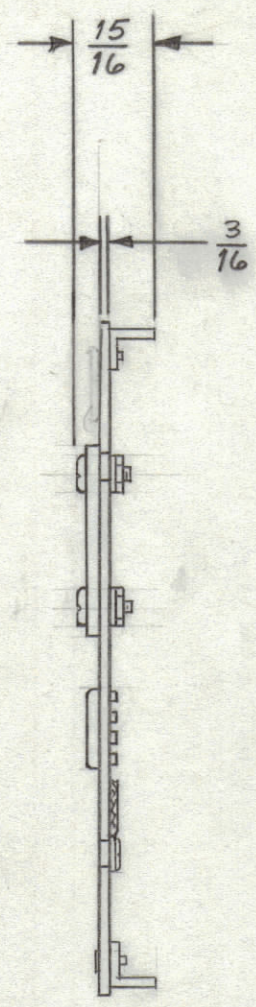
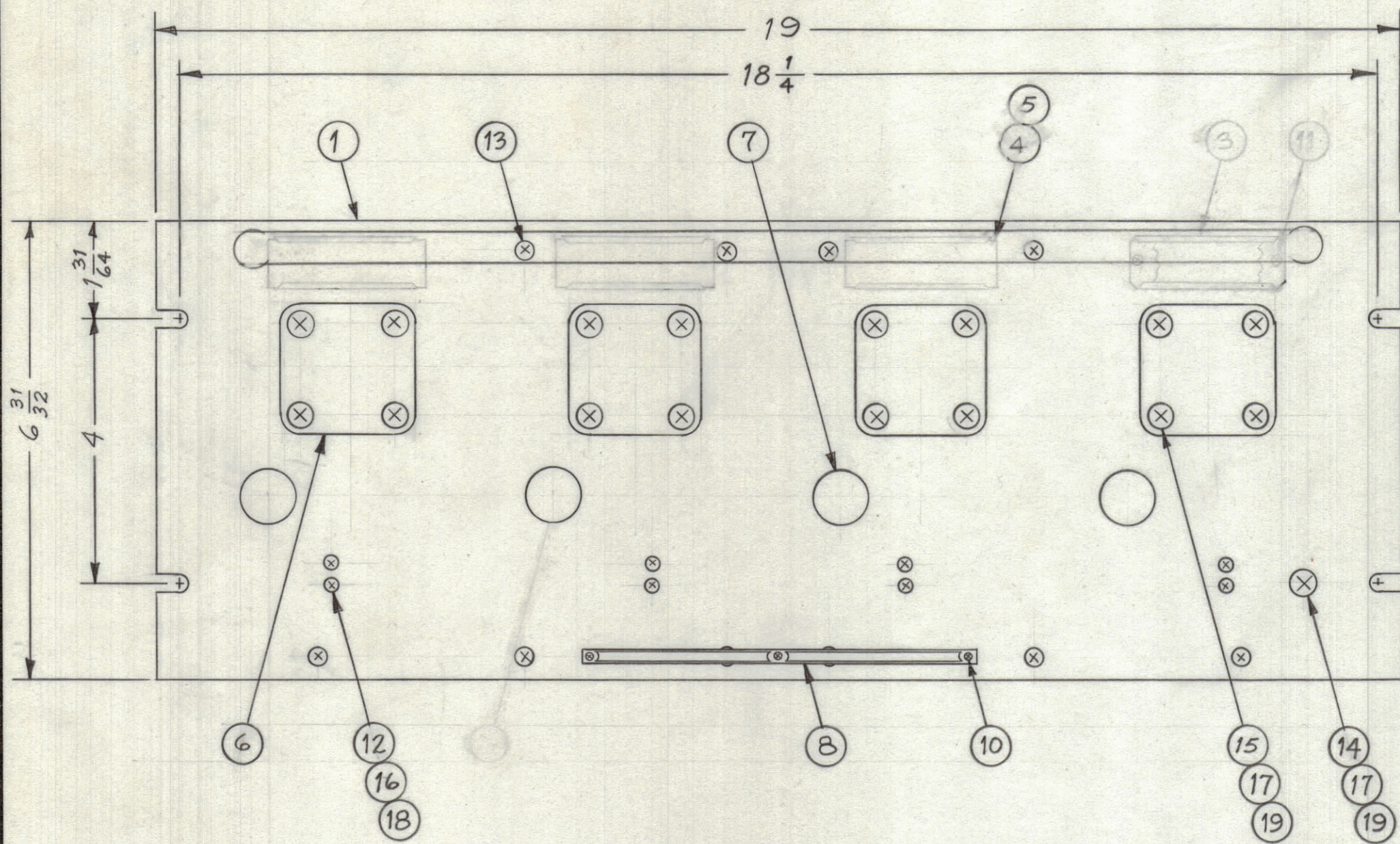


REVISIONS				
ZONE	SYM	DESCRIPTION	DATE	E.M.N. NO.
A		ITEM (3) & ITEM (1) DELETED	5-29-64	2059 SOL



REQ'D.	ITEM	PART NUMBER	DESCRIPTION	SYMBOL
	17	19	NTH 1032 BN 12	NUT, HEX
	8	18	NTH0440 BN 6	NUT, HEX
	17	17	LWE 10 MRN	WASHER, LOCK, EXTERNAL
	8	16	LWE 04 MRN	WASHER, LOCK, EXTERNAL
	16	15	SCBP1032 BN 9	SCREW, MACHINE
	1	14	SCBP1032 BN 8	SCREW, MACHINE
	12	13	SCFP0632 BN 5	SCREW, MACHINE
	8	12	SCFP0440 BN 6	SCREW, MACHINE
x	3	11	SCFP0348 BN 4	SCREW, MACHINE
	3	10	SFB0256 SN 3	SCREW, THREAD CUTTING
	1	9	CA-409-59-6.00	CABLE ASS'Y, GROUND
	1	8	NP-250	NAMEPLATE, IDENTIFICATION
	4	7	HB-101-3-G	PLUG BUTTON
	4	6	MS-2972	BLANK, COVER
	4	5	PX-396-17	GUARD, PLASTIC
	4	4	PR-101-17	TAB, PAPER
v	4	3	MS-2663	HOLDER, CARD
	2	2	PM-490	BRACE, PANEL
	1	1	MS-3712	PANEL, FRONT

QDP-PA-104

MARTINENGO LIST OF MATERIAL				
MATERIAL; PANEL		THE TECHNICAL MATERIEL CORP. MAMARONECK, NEW YORK		
FINISH; PANEL		TITLE		
ALUMINUM		PATCH PANEL, BLANK ASSEMBLY		
TMC SMOOTH GREY SEMI GLOSS ENAMEL		DRAWN		
		M. TANTILLO		DATE
		2-24-64		DATE
		3-24-64		DATE
		KDC		DATE
		QDP-PA-104		DATE
		2-24-64		DATE
		SHEET		DATE
		A		DATE
		REV. LTR.		DATE

Q'TY./UNIT	MODEL USED ON	ASS'Y. NO.
SCALE	CODE	
NTS		

NOTES

THE CONTENTS OF THIS DRAWING ARE THE EXCLUSIVE PROPERTY OF THE TECHNICAL MATERIEL CORP. ITS UNAUTHORIZED USE OR REPRODUCTION IN WHOLE OR IN PART IS STRICTLY FORBIDDEN.

UNLESS OTHERWISE SPECIFIED DIMENSIONS ARE IN INCHES AND INCLUDE CHEMICALLY APPLIED OR PLATED FINISHES

DECIMALS .X ± .05 .XX ± .01 .XXX ± .005

FRACTIONS ± 1/64 ANGLES ± 0° 30'

TOLERANCES

ELECT. DES. MECH. DES. DATE 2-24-64 SHEET