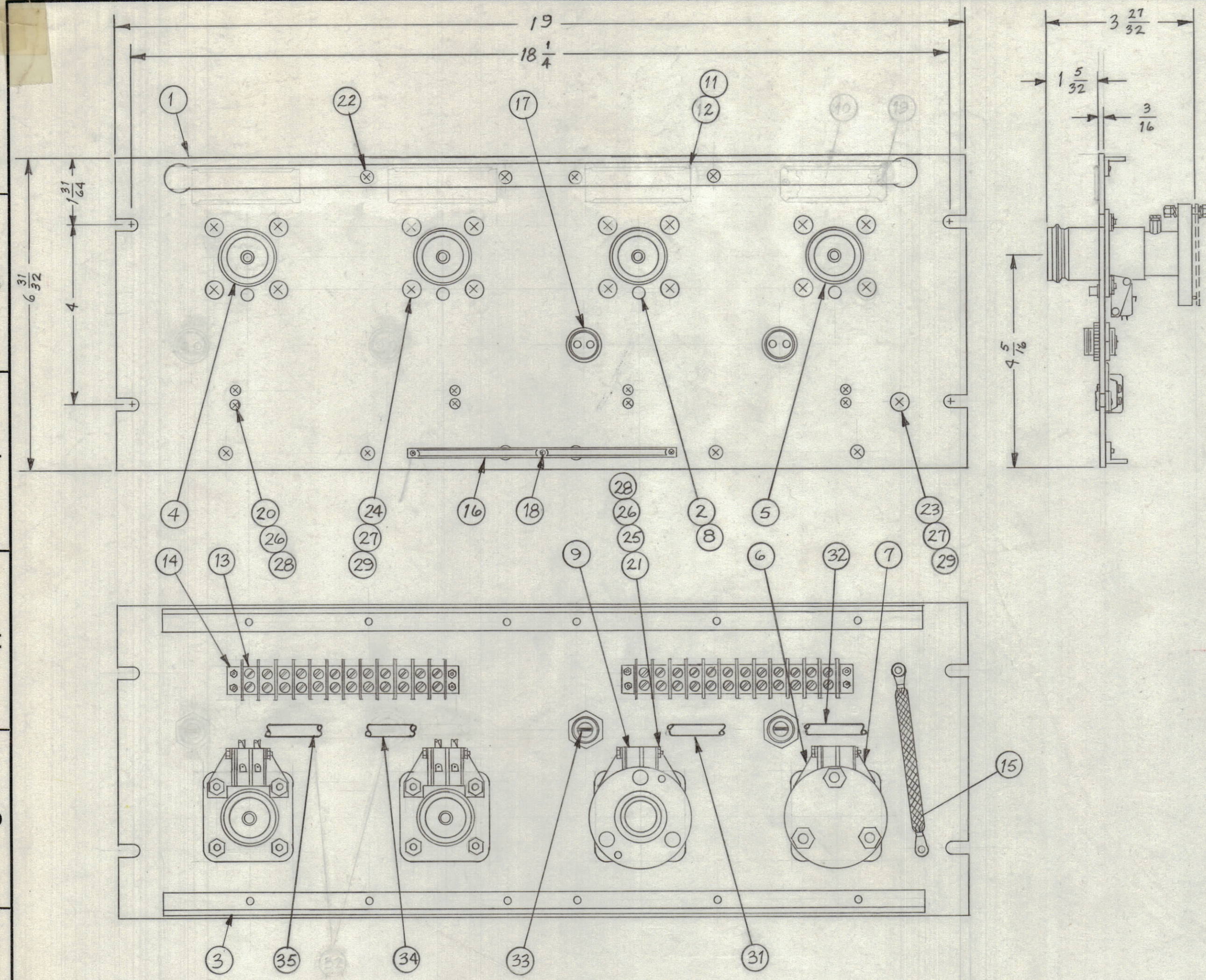
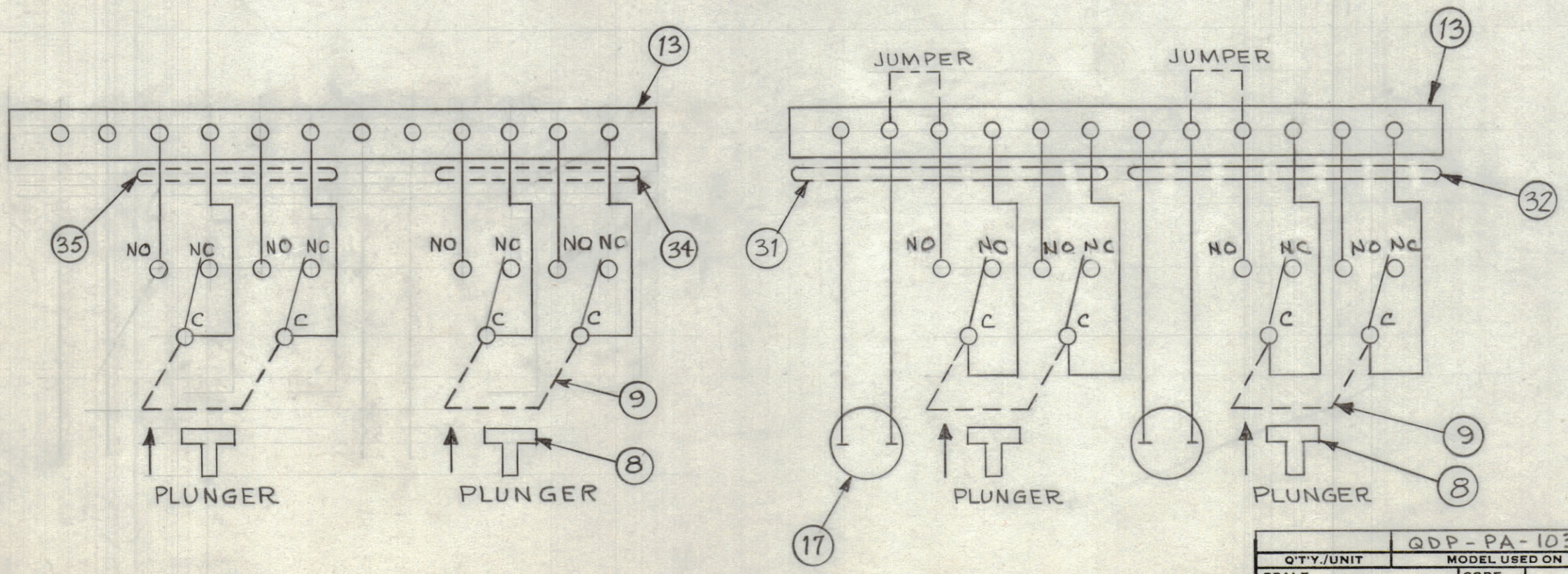


REVISIONS							
ZONE	SYM	DESCRIPTION	DATE	E.M.N. NO.	DRAFT	CHKD	APPD
	A	REVERSED "NC" & "NO" (8 PLACES)	3-6-64	11010	A.M.	gms	atm
	B	ITEM 10 & ITEM 19 DEL. PICT. UPDATED	5-2-84	22058	GDL		



REQ'D.	ITEM	PART NUMBER	DESCRIPTION	SYMBOL
1	35	CA-873-L	WIRING HARNESS, BRANCHED	
1	34	CA-873-R	WIRING HARNESS, BRANCHED	
4"	33	PX-104-1-133	SLEEVE, INSULATION	
2	32	CA-840-R	WIRING HARNESS, BRANCHED	
1	31	CA-840-L	WIRING HARNESS, BRANCHED	
1	30	TM-105-12-AR	FANNING STRIP (LOOSE ITEM)	
17	29	NTH032 BN 12	NUT, HEX	
16	28	NTH0440 BN 6	NUT, HEX	
17	27	LWE 10 MRN	WASHER, LOCK, EXTERNAL	
16	26	LWE 04 MRN	WASHER, LOCK, EXTERNAL	
16	25	WI-109-17	WASHER, FIBER	
16	24	SCFP1032 BN 9	SCREW, MACHINE	
1	23	SCFP1032 BN 8	SCREW, MACHINE	
12	22	SCFP0632 BN 5	SCREW, MACHINE	
12	21	SCFP0440 BN 16	SCREW, MACHINE	
8	20	SCFP0440 BN 10	SCREW, MACHINE	
3	18	SFB0256 SN 3	SCREW, THREAD CUTTING	
2	17	JJ-10004	CONNECTOR, RECEPTACLE, ELECTRICAL	
1	16	NP-250	NAMEPLATE, IDENTIFICATION	
1	15	CA-409-59-6.00	CABLE ASS'Y, GROUND	
4	14	MS-154-1	PLATE, SADDLE	
2	13	TM-102-12	TERMINAL STRIP, BARRIER TYPE	
4	12	PX-104-1-17	GUARD, PLASTIC	
4	11	PR-396-17	TAB, PAPER	
10	10	MS-2000	HOLDER, CARD	
8	9	SW-189	SWITCH, MICRO	
4	8	PM-427-1	PLUNGER, SWITCH	
4	7	MS-987	BRACKET, SWITCH, RIGHT	
4	6	MS-986	BRACKET, SWITCH, LEFT	
2	5	JJ-258-50	CONNECTOR, RECEPTACLE	
2	4	JJ-138	CONNECTOR, RECEPTACLE	
2	3	PM-490	BRACE, PANEL	
4	2	BB-115	BEARING, OILITE (P/O MS-	
1	1	MS-3713	PANEL, FRONT	

QDP-PA-103 B



**NOTES**

QDP-PA-103		ASS'Y. NO.
Q'TY./UNIT	MODEL USED ON	
SCALE	CODE	
THE CONTENTS OF THIS DRAWING ARE THE EXCLUSIVE PROPERTY OF THE TECHNICAL MATERIEL CORP. ITS UNAUTHORIZED USE OR REPRODUCTION IN WHOLE OR IN PART IS STRICTLY FORBIDDEN.		

MARTINENGO LIST OF MATERIAL			
MATERIAL; PANEL ALUMINUM		THE TECHNICAL MATERIEL CORP. MAMARONECK, NEW YORK	
FINISH; PANEL TMC SMOOTH GREY SEMI-GLOSS ENAMEL		TITLE PATCH PANEL QUICK DISCONNECT QDL TO QDL AND 1/8 EIA FLANGE TO QDL	
UNLESS OTHERWISE SPECIFIED DIMENSIONS ARE IN INCHES AND INCLUDE CHEMICALLY APPLIED OR PLATED FINISHES		DRAWN M TANTILLO	DATE 2-18-64
DECIMALS .X ± .05 .XX ± .01 .XXX ± .005		CHECKED gms	DATE 1-24-64
FRACTIONS ± 1/64 ANGLES ± 0° 30'		ELECT. DES. gms	DATE 3-24-64
TOLERANCES		MECH. DES. gms	DATE 3-24-64
		FINAL APPROVAL KATL	
		DATE 3-24-64	
		SHEET	

QDP-PA-103 B