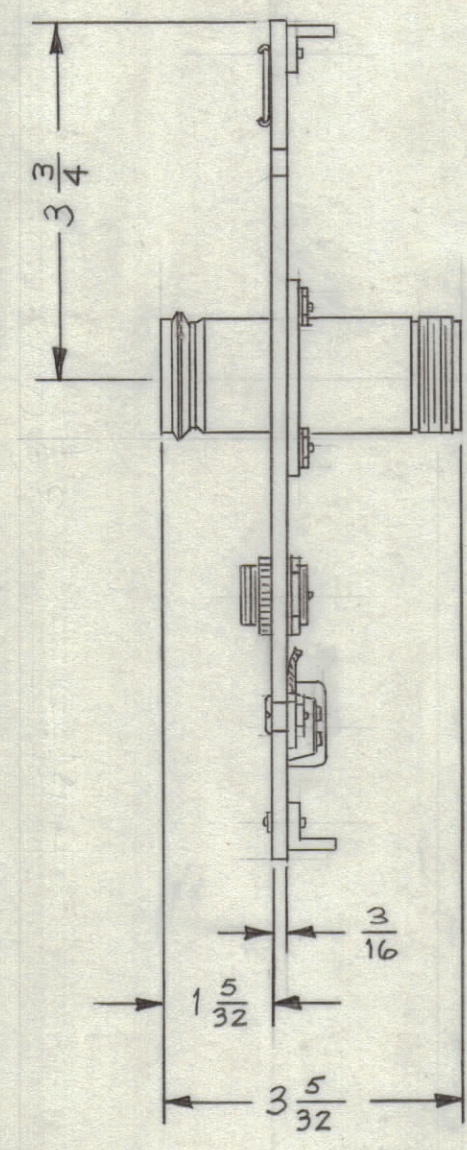
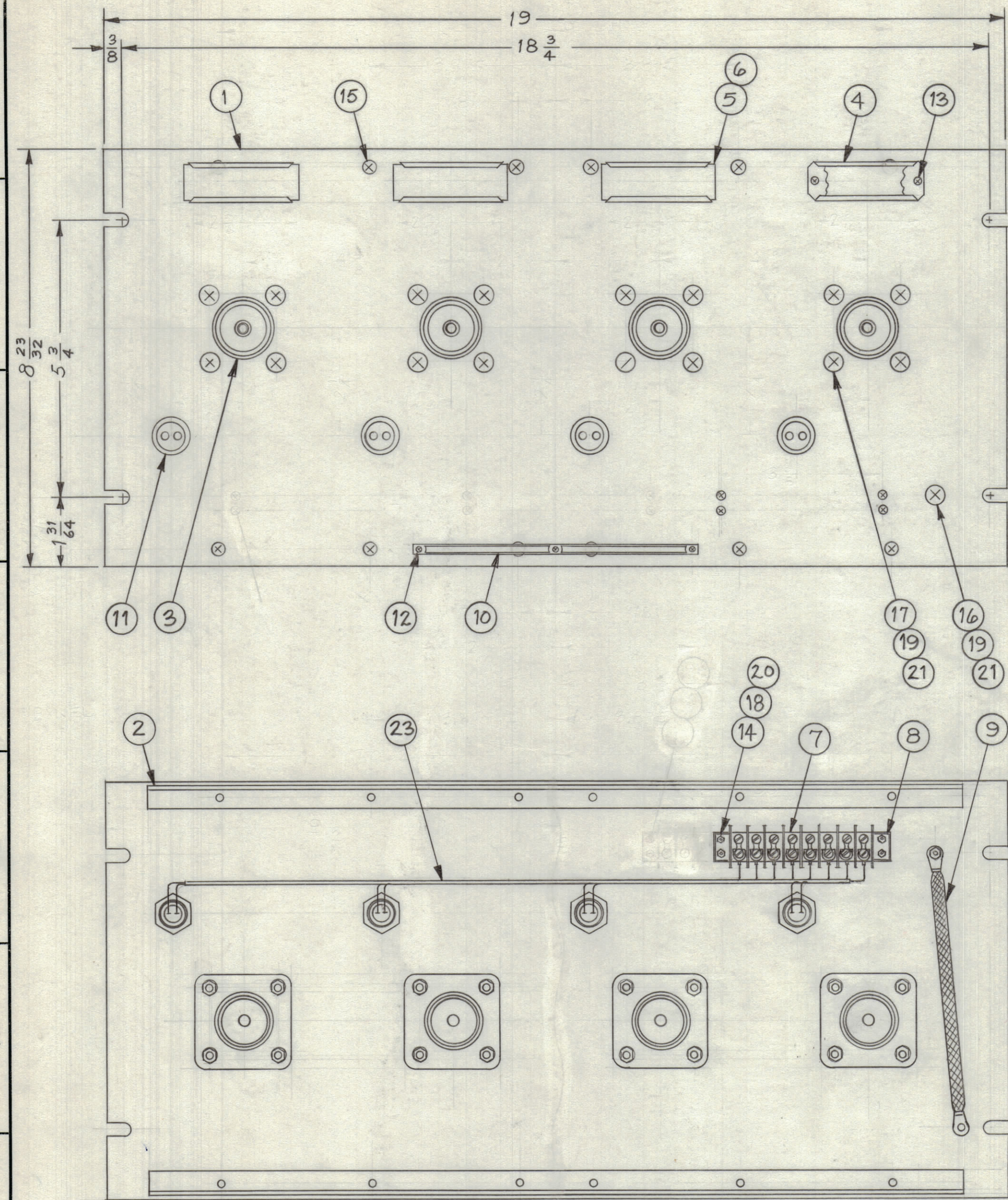


| REVISIONS | | | | | | | |
|-----------|-----|-------------|------|------------|-------|------|------|
| ZONE | SYM | DESCRIPTION | DATE | E.M.N. NO. | DRAFT | CHKD | APPD |



| REQ'D. | ITEM | PART NUMBER | DESCRIPTION | SYMBOL |
|--------|------|----------------|-----------------------------------|------------|
| 1 | 23 | CA-839 | WIRING HARNESS, BRANCHED | QDP-9E2X4B |
| 1 | 22 | TM-105-8-AR | FANNING STRIP (LOOSE ITEM) | |
| 17 | 21 | NTH1032BN12 | NUT, HEX | |
| 4 | 20 | NTH0440BN6 | NUT, HEX | |
| 17 | 19 | LWE10MRN | WASHER, LOCK, EXTERNAL | |
| 4 | 18 | LWE04MRN | WASHER, LOCK, EXTERNAL | |
| 16 | 17 | SCFP1032BN9 | SCREW, MACHINE | |
| 1 | 16 | SCFP1032BN8 | SCREW, MACHINE | |
| 12 | 15 | SCFP0632BN5 | SCREW, MACHINE | |
| 4 | 14 | SCFP0440BN10 | SCREW, MACHINE | |
| 8 | 13 | SCFP0348BN4 | SCREW, MACHINE | |
| 3 | 12 | SFBO256SN3 | SCREW, THREAD CUTTING | |
| 4 | 11 | JJ-10004 | CONNECTOR, RECEPTACLE, ELECTRICAL | |
| 1 | 10 | NP-250 | NAMEPLATE, IDENTIFICATION | |
| 1 | 9 | CA-409-59-6.00 | CABLE ASS'Y, GROUND | |
| 2 | 8 | MS-154-1 | PLATE, SADDLE | |
| 1 | 7 | TM-102-8 | TERMINAL STRIP, BARRIER TYPE | |
| 4 | 6 | PX-623-1 | GUARD, PLASTIC | |
| 4 | 5 | PR-103-1 | TAB, PAPER | |
| 4 | 4 | MS-2669 | HOLDER, CARD | |
| 4 | 3 | JJ-174 | CONNECTOR, RECEPTACLE | |
| 2 | 2 | PM-490 | BRACE, PANEL | |
| 1 | 1 | MS-3614 | PANEL, FRONT | |

| MARTINENGO LIST OF MATERIAL | | | |
|---|------------------|--|---|
| MATERIAL ALUMINUM | | THE TECHNICAL MATERIEL CORP. MAMARONECK, NEW YORK | |
| FINISH TMC SMOOTH GRAY SEMI-GLOSS ENAMEL | | TITLE PATCH PANEL QUICK DISCONNECT "LC" TO "QDL" | |
| QTY./UNIT | MODEL USED ON | ASS'Y. NO. | |
| SCALE 1:2 | CODE A | | |
| UNLESS OTHERWISE SPECIFIED DIMENSIONS ARE IN INCHES AND INCLUDE CHEMICALLY APPLIED OR PLATED FINISHES | | DECIMALS .X ± .05 .XX ± .01 .XXX ± .005 | FRACTIONS ± 1/64 ANGLES ± 0° 30' |
| DRAWN M. TANTILLO | DATE 11-6-63 | FINAL APPROVAL <i>[Signature]</i> | DATE |
| CHECKED <i>[Signature]</i> | DATE 11/22/63 | QDP-9E2X4B | |
| ELECT. DES. <i>[Signature]</i> | DATE 11-22-63 | SHEET | REV. LTR. |

NOTES

THE CONTENTS OF THIS DRAWING ARE THE EXCLUSIVE PROPERTY OF THE TECHNICAL MATERIEL CORP. ITS UNAUTHORIZED USE OR REPRODUCTION IN WHOLE OR IN PART IS STRICTLY FORBIDDEN.