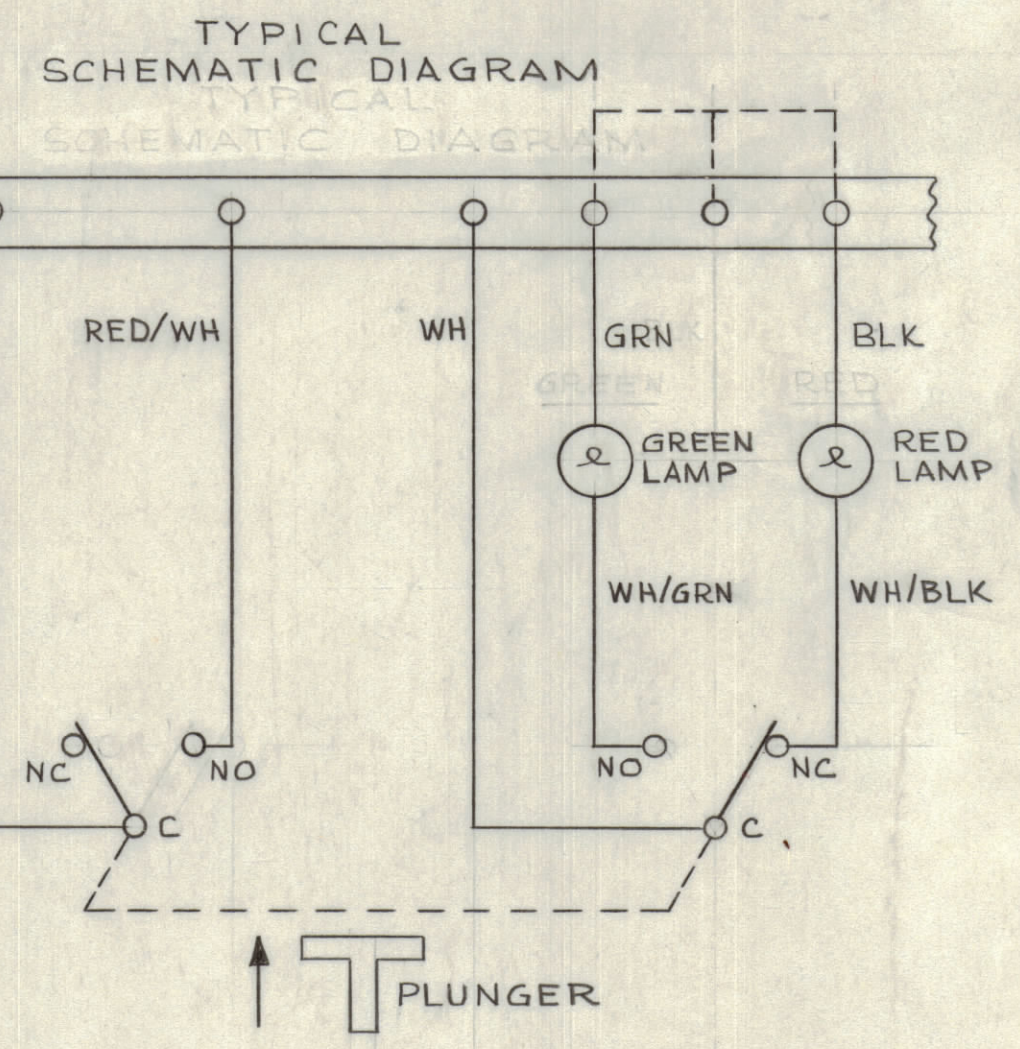
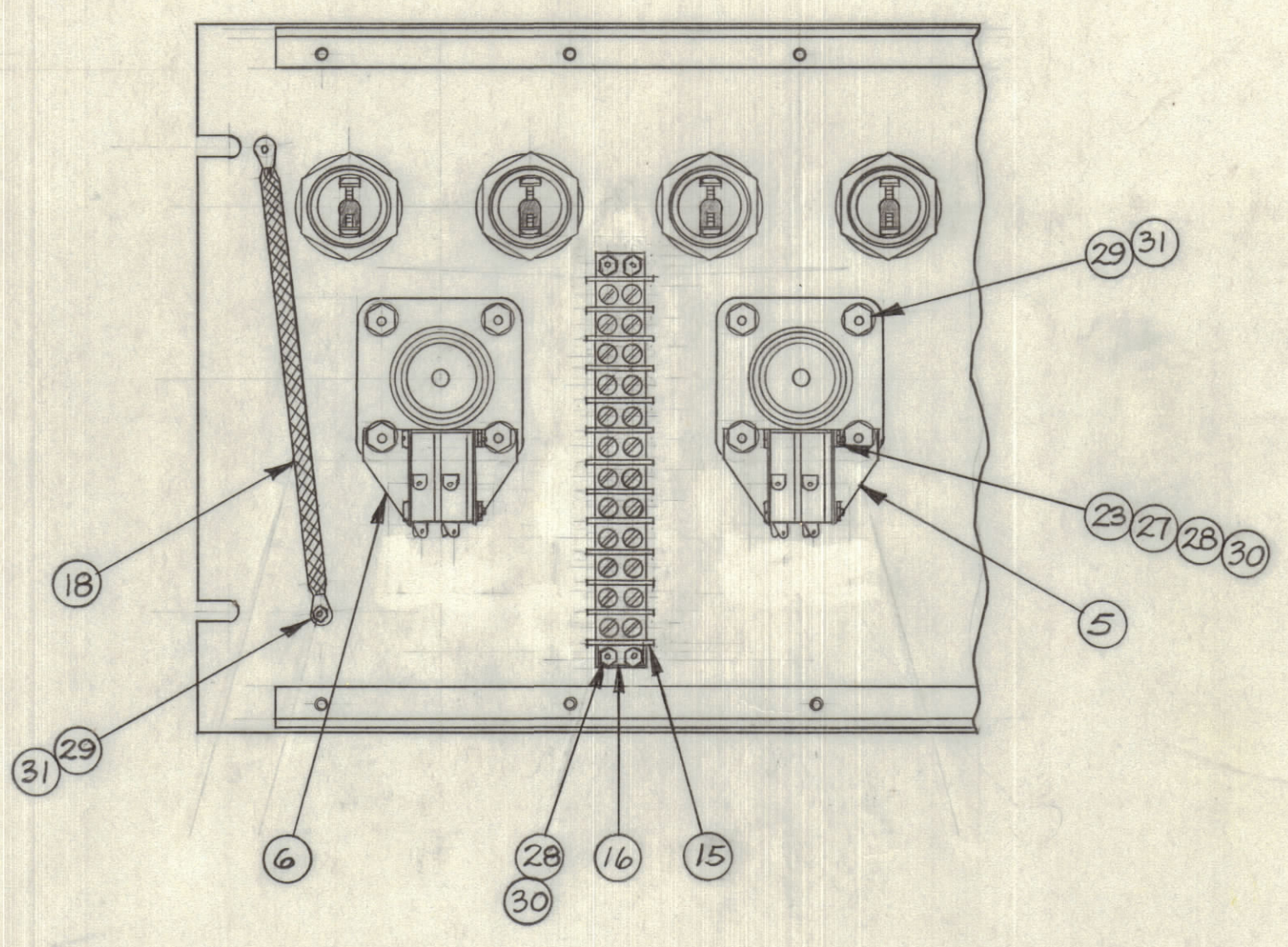
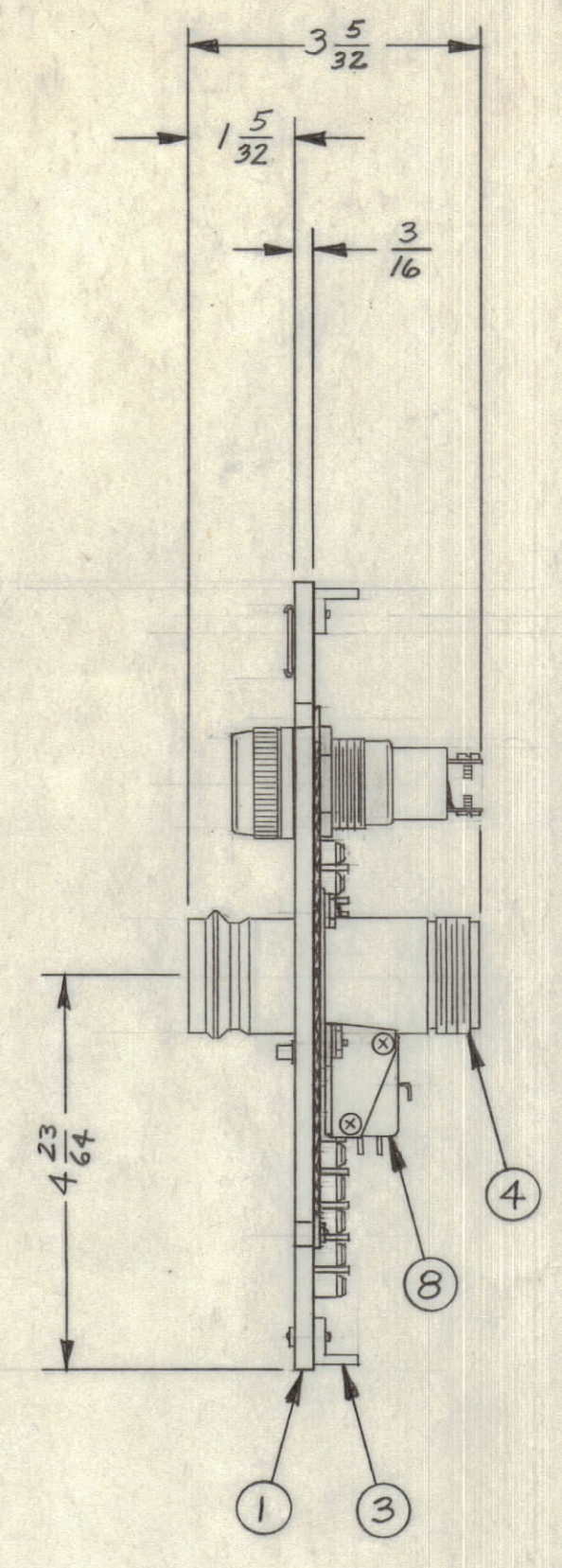
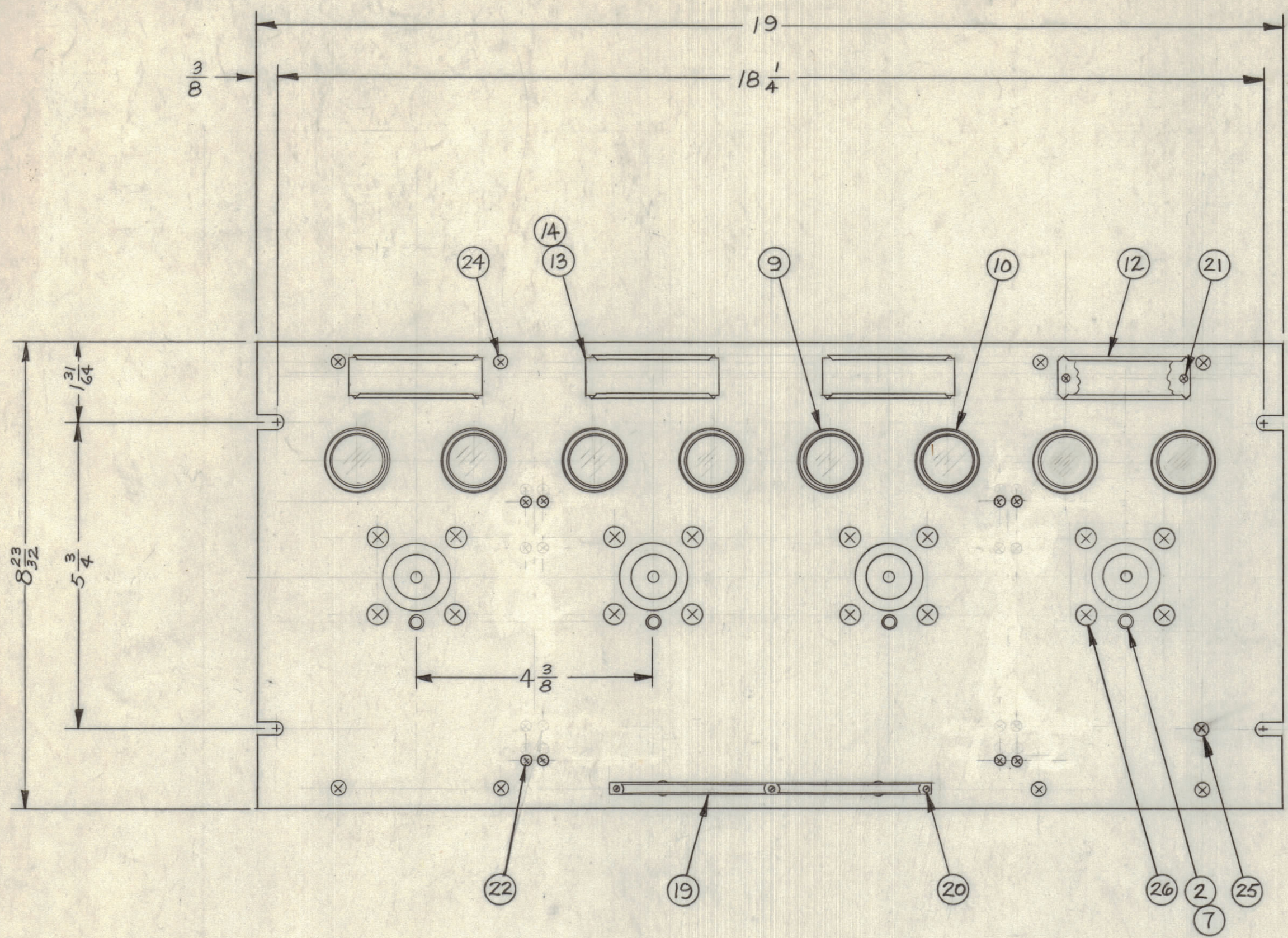


NOTICE TO PERSONS RECEIVING THIS DRAWING

THE TECHNICAL MATERIEL CORPORATION claims proprietary right in the material disclosed herein. This drawing is issued in confidence for engineering information only and may not be reproduced or used to manufacture anything shown hereon without permission from THE TECHNICAL MATERIEL CORPORATION to the user. This drawing is loaned for mutual assistance and is subject to recall at any time.

Property of:  
THE TECHNICAL MATERIEL CORPORATION  
MAMARONECK, NEW YORK



| REQ. | ITEM | PART NO.       | MARTINENGO | DESCRIPTION                                   | SYMBOL |
|------|------|----------------|------------|---|--------|
| X    | 33   | S-             |            | TEST PROCEDURE                                |        |
| 2    | 32   | TM-105-12-AR   |            | FANNING STRIP (LOOSE ITEM)                    |        |
| 17   | 31   | NTH 1032 BN12  |            | NUT, HEX                                      |        |
| 16   | 30   | NTH0440 BN6    |            | NUT, HEX                                      |        |
| 17   | 29   | LWE 10 MRN     |            | WASHER, LOCK, EXTERNAL                        |        |
| 16   | 28   | LWE 04 MRN     |            | WASHER, LOCK, EXTERNAL                        |        |
| 16   | 27   | WI-109-17      |            | FIBER, WASHER                                 |        |
| 16   | 26   | SCFP1032 BN9   |            | SCREW MACHINE                                 |        |
| 1    | 25   | SCBP1032BN8    |            | SCREW MACHINE                                 |        |
| 12   | 24   | SCFP0632BN5    |            | SCREW MACHINE                                 |        |
| 8    | 23   | SCBP0440BN16   |            | SCREW, MACHINE                                |        |
| 8    | 22   | SCFP0440BN10   |            | SCREW, MACHINE                                |        |
| 8    | 21   | SCFP0348BN4    |            | SCREW, MACHINE                                |        |
| 3    | 20   | SFB0256 SN3    |            | SCREW THREAD CUTTING                          |        |
| 1    | 19   | NP-250         |            | NAMEPLATE IDENTIFICATION                      |        |
| 1    | 18   | CA-409-69-6.00 |            | CABLE ASS'Y GROUND                            |        |
| 2    | 17   | CA-732         |            | CABLE ASS'Y                                   |        |
| 4    | 16   | MS-154-1       |            | PLATE, SADDLE                                 |        |
| 2    | 15   | TM-102-12      |            | TERMINAL STRIP, BARRIER TYPE                  |        |
| 4    | 14   | PX-623-1       |            | GUARD, PLASTIC                                |        |
| 4    | 13   | PX-103-1       |            | TAB, PAPER                                    |        |
| 4    | 12   | MS-2669        |            | HOLDER, CARD                                  |        |
| 8    | 11   | BI-105-1       |            | LAMP, INCANDESCENT, SCREW BASE                |        |
| 4    | 10   | TS-136-2FS     |            | SOCKET, LAMP, GREEN LENS, FROSTED, SCREW BASE |        |
| 4    | 9    | TS-136-1FS     |            | SOCKET, LAMP, RED LENS, FROSTED, SCREW BASE   |        |
| 8    | 8    | SW-189         |            | SWITCH, MICRO                                 |        |
| 4    | 7    | PM-427-1       |            | PLUNGER, SWITCH                               |        |
| 4    | 6    | MS-987         |            | BRACKET, SWITCH, RIGHT                        |        |
| 4    | 5    | MS-986         |            | BRACKET, SWITCH, LEFT                         |        |
| 4    | 4    | JJ-174         |            | CONNECTOR, RECEPTACLE                         |        |
| 2    | 3    | PM-486         |            | BRACE, PANEL                                  |        |
| 4    | 2    | BB-115         |            | BEARING, OILITE (% MS-3063)                   |        |
| 1    | 1    | MS-3063        |            | PANEL, FRONT, MACHINING                       |        |

| SYM                            | ZONE | DESCRIPTION  | DATE | CH. NO.       | DRAFTS | CHECKER | ENG. APP. |
|--------------------------------|------|--|------|---------------|--------|---------|-----------|
| UNLESS OTHERWISE SPECIFIED:    |      | SCALE  |      |               |        |         |           |
| DIMENSIONS ARE IN INCHES       |      | MAXIMUM ALLOWABLE TOLERANCES HAVE BEEN DETERMINED AND ANY DEVIATIONS WILL BE CAUSE FOR REJECTION. REMOVE ALL BURRS & SHARP EDGES |      |               |        |         |           |
| TOLERANCES ON FRACTIONS ± 1/64 |      | DECIMALS ± .005  |      | ANGLES ± 1/2° |        |         |           |

|               |            |         |           |          |  |
|---------------|------------|---------|-----------|----------|--|
| 1             | QDP-9E2S4A |         |           | 12-12-62 |  |
| REQ. PER UNIT | MODEL      | SECTION | ASSY. NO. | DATE     |  |
| USED ON       |            |         |           |          |  |

|                    |  |                 |  |                 |  |
|--------------------|--|-----------------|--|-----------------|--|
| MATERIAL           |  | M. TANTILLO     |  | FINAL APPROVAL  |  |
| ALUMINUM           |  | DRAWN           |  | QDP-9E2S4A      |  |
| TYPE & TEMPER      |  | CHECKED         |  | SHEET OF        |  |
| HEAT TREAT. SPEC.  |  | MECH. DES. APP. |  | ELEC. DES. APP. |  |
| FINISH & SPEC. NO. |  | MECH. DES. APP. |  | SHEET OF        |  |

QDP-9E2S4A