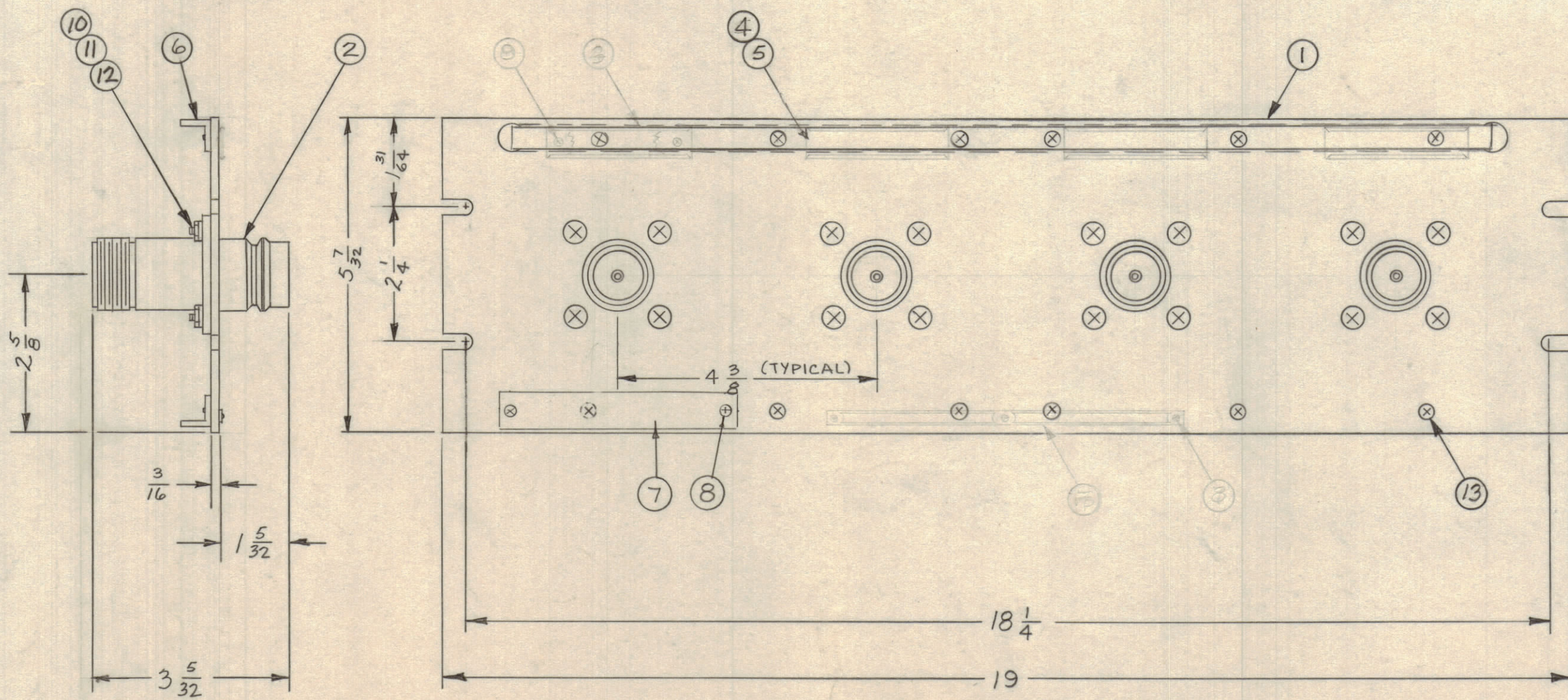


REVISIONS							
ZONE	SYM	DESCRIPTION	DATE	E.M.N. NO.	DRAFT	CHKD	APPD
E6	A	RELOC ITEM 7 - WAS NP250	7-3-78	21663	WJB		
	B	ITEM 3, MS576 & ITEM 0 DELETED, PICT. UPDATED CHANGE ITEM 4 & ITEM 13	4-5-84	22051	GDL		



QDP-9C2X4 B

REQ'D.	ITEM	PART NUMBER	DESCRIPTION	SYMBOL
X	14	S-721	TEST PROCEDURE	
	12	SCFP0632BN5	SCREW, MACHINE	
	16	NTH 1032 BN12	NUT, HEXAGON	
	16	LWE 10 MRN	WASHER, LOCK, EXTERNAL	
	16	SCFP1032 BN9	SCREW, MACHINE	
	9	SCFP0518 SN4	SCREW, MACHINE	
	2	SFB 0256 SN3	SCREW, THREAD CUTTING	
	1	NP1003	NAMEPLATE, IDENTIFICATION	
	2	PM-490	BRACE, PANEL	
	1	PX-396-17	GUARD, TAB	
	1	PR-101-17	TAB, PAPER	
	4	MS-576	HOLDER, CARD	
	4	JJ-174	CONNECTOR, RECEPTACLE	
	1	MS-1078-1	MACHINING, FRONT PANEL	

LIST OF MATERIAL

MATERIAL ALUMINUM		THE TECHNICAL MATERIEL CORP. MAMARONECK, NEW YORK	
FINISH TMC SMOOTH GRAY SEMI-GLOSS ENAMEL		TITLE PATCH PANEL, QUICK DISCONNECT "QDL" TO "LC"	
UNLESS OTHERWISE SPECIFIED DIMENSIONS ARE IN INCHES AND INCLUDE CHEMICALLY APPLIED OR PLATED FINISHES	DRAWN M. TANTILLO	DATE 11-26-62	FINAL APPROVAL
DECIMALS .X ± .05 .XX ± .01 .XXX ± .005	CHECKED	DATE 11/21/62	DATE
FRACTIONS ± 1/64 ± 1/32 ± 3/64	ELECT. DES.	DATE	DATE
TOLERANCES ANGLES ± 0° 30'	MECH. DES.	DATE 12/3/62	SHEET

1	QDP-9C2X4	ASS'Y. NO.
Q'TY./UNIT	MODEL USED ON	
SCALE	CODE	

NOTES

THE CONTENTS OF THIS DRAWING ARE THE EXCLUSIVE PROPERTY OF THE TECHNICAL MATERIEL CORP. ITS UNAUTHORIZED USE OR REPRODUCTION IN WHOLE OR IN PART IS STRICTLY FORBIDDEN.

QDP-9C2X4 B