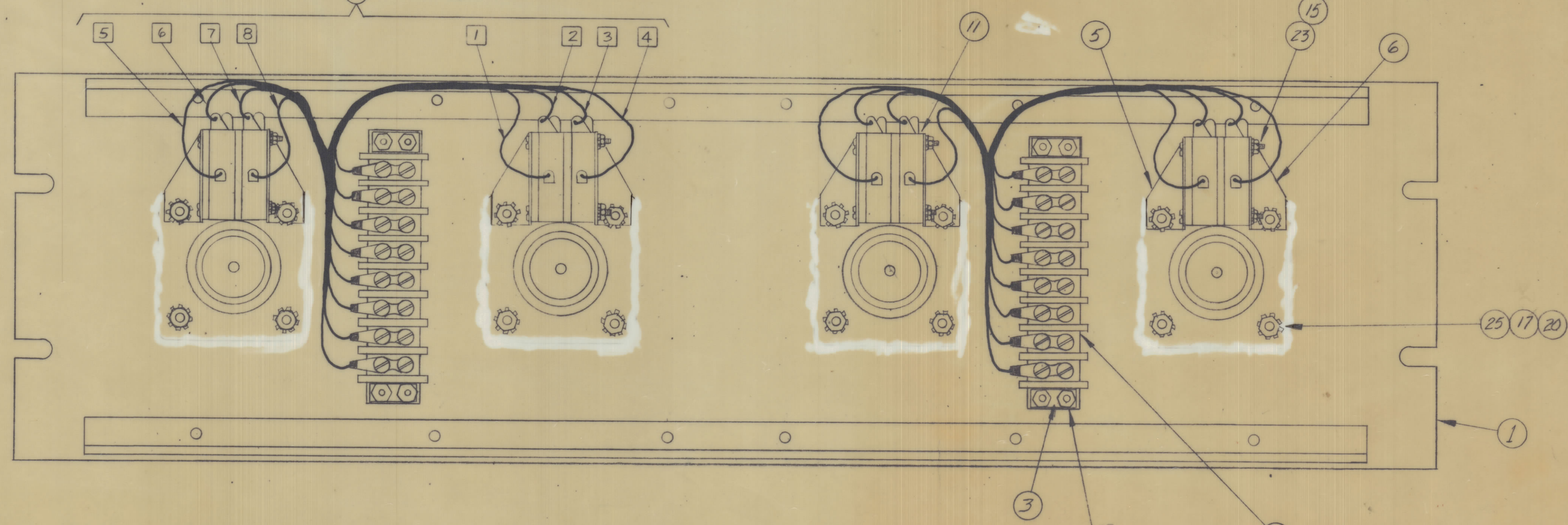
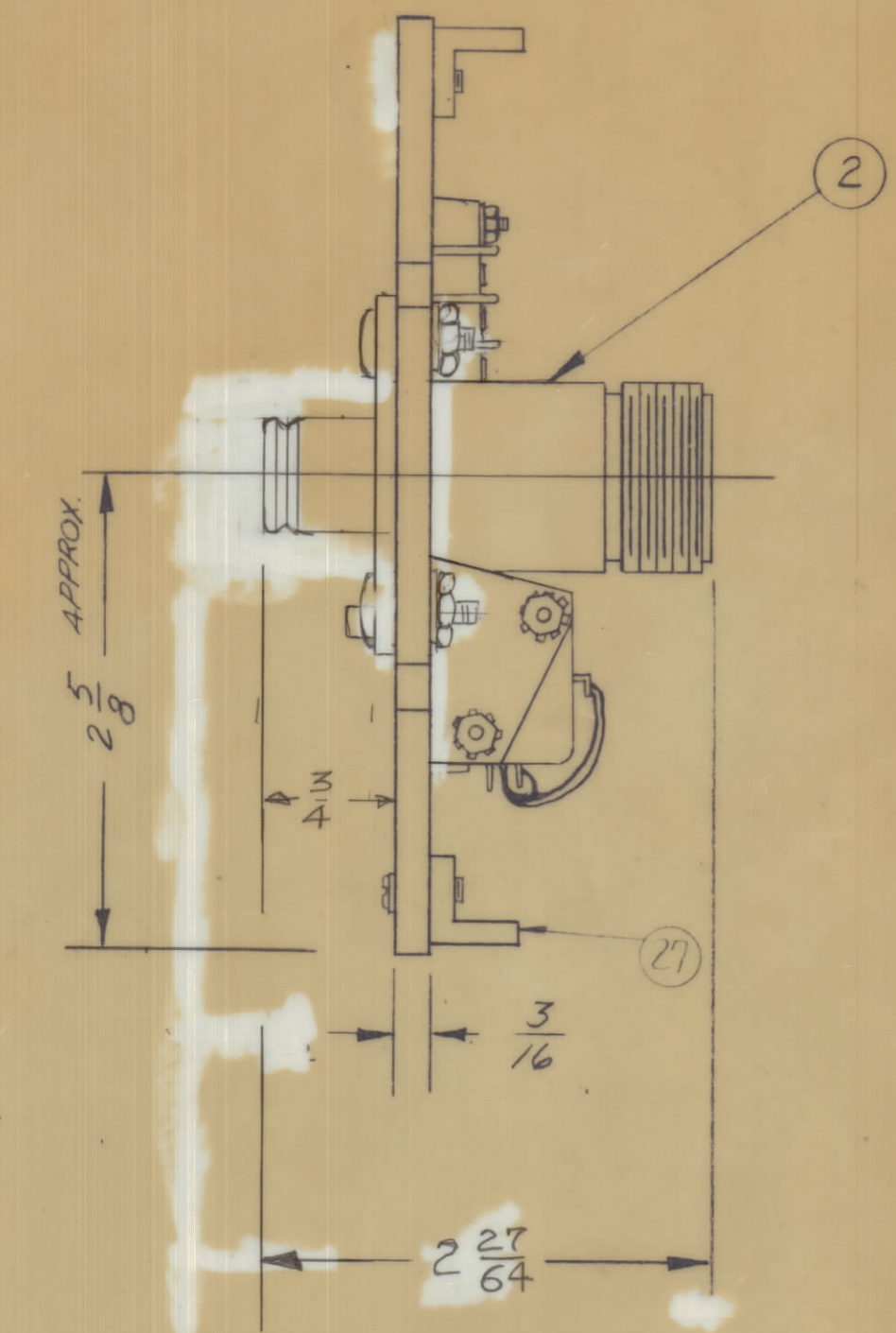
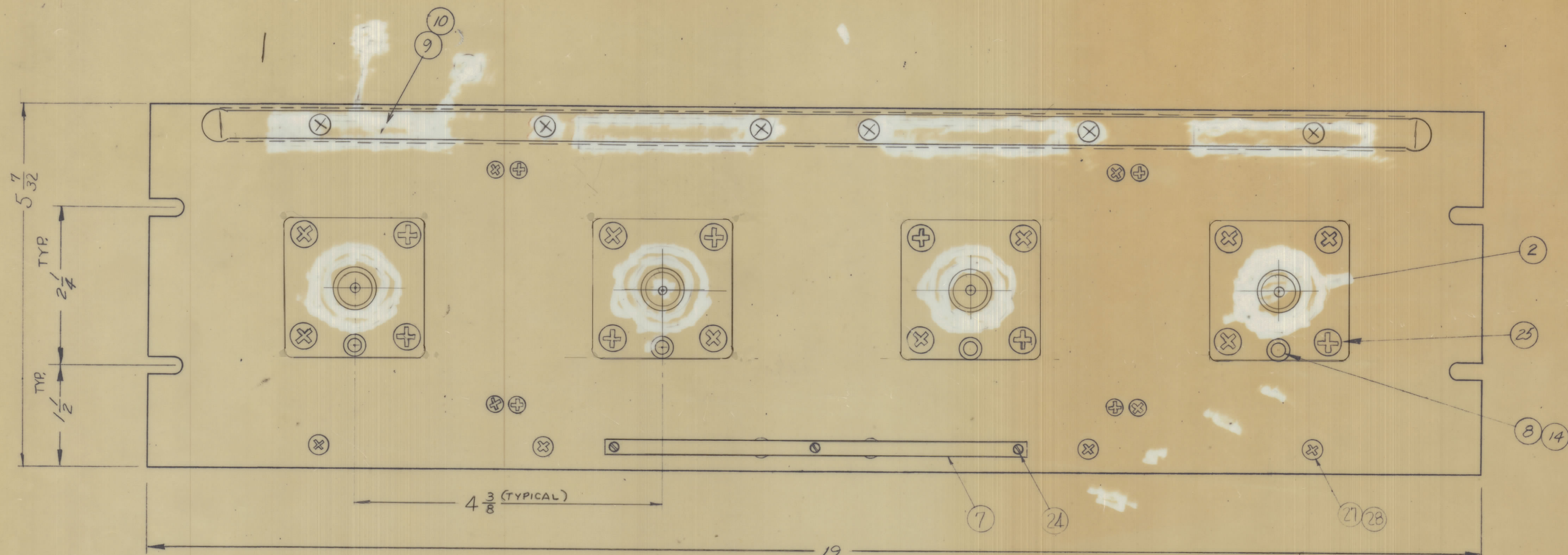
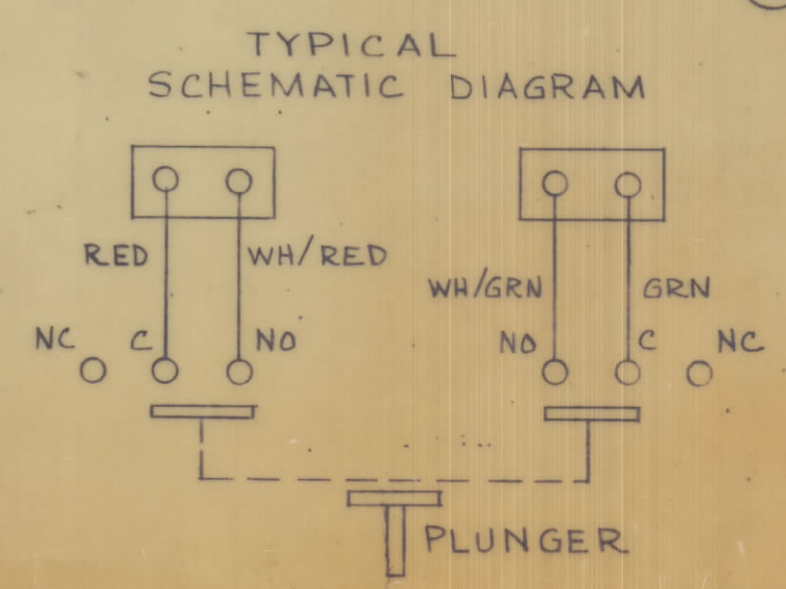


NOTICE TO PERSONS RECEIVING THIS DRAWING  
 THE TECHNICAL MATERIEL CORP. is not responsible for the use of this drawing for any purpose other than that for which it was prepared. This drawing is not to be used for the manufacture of any part or assembly without the written permission of the Technical Materiel Corporation. The user assumes all responsibility for the use of this drawing and for the safety of the user and his personnel. THE TECHNICAL MATERIEL CORPORATION  
 MAMARONECK, NEW YORK



ITEM 13 INSTALLATION (COLOR CODE)

- 1 RED
- 2 WHITE/RED
- 3 WHITE/GREEN
- 4 GREEN
- 5 RED
- 6 WHITE/RED
- 7 WHITE/GREEN
- 8 GREEN



NOTE:  
 ITEM 16 SUPPLIED AS LOOSE ITEM

REQ. ITEM	PART NO.	DESCRIPTION	SYMBOL
X 29	S-716	TEST PROCEDURE	
12 28	SCFP0632BN5	SCREW, MACHINE	
2 27	PM-490	BRACE PANEL	
- 26	NOT USED		
16 25	SCBP1032BN9	SCREW, MACHINE	
3 24	SFB0256SN3	SCREW, THREAD CUTTING	
8 23	SCBP0440BN16	SCREW, MACHINE	
8 22	SCFP0440BN10	SCREW, MACHINE	
- 21			
16 20	NTH1032BN10	NUT, HEX	
8 19	NTH0440BN8	NUT, HEX	
8 18	NTH0440BN6	NUT, HEX	
16 17	LWE10MRC	LOCKWASHER, EXTERNAL	
2 16	TM-105-8-AR	FANNING STRIP (LOOSE ITEM)	
16 15	LWE04MRC	LOCKWASHER, EXTERNAL	
4 14	BB-115	BEARING, OILITE (P/O A-1349)	
2 13	CA-345	CABLE ASSEMBLY	
2 12	TM-102-8	TERMINAL SWITCH, BARRIER TYPE	
8 11	SW-189	SWITCH, MICRO, PUSH	
4 10	PX-250	FREQUENCY TAB	
4 9	PX-249	GUARD, FREQ. TAB	
4 8	PM-427-1	PLUNGER, SWITCH	
1 7	NP-250	NAMEPLATE	
4 6	MS-987	BRACKET, SWITCH, RIGHT	
4 5	MS-986	BRACKET, SWITCH, LEFT	
- 4			
4 3	MS-154-1	STRADDLE PLATE	
4 2	JJ-331	CONNECTOR, RECEPTACLE	
1 1	A-1349-2	FRONT PANEL	

ITEM 4 NO 576 & ITEM 21 DELETED PICTORIAL UPDATED		DATE: 4-4-84	CH. NO. 10050	DRAFTS: C.D.L.	CHECKER: [Signature]	ENG. APP. [Signature]
ORIGINAL RELEASE FOR PROD.		DATE: 1/3/66				
UNLESS OTHERWISE SPECIFIED:		SCALE				
DIMENSIONS ARE IN INCHES		MAXIMUM ALLOWABLE TOLERANCES HAVE BEEN DETERMINED AND ANY DEVIATIONS WILL BE CAUSE FOR REJECTION. REMOVE ALL BURRS & SHARP EDGES				
TOLERANCES ON FRACTIONS ± 1/64		DECIMALS ± .005		ANGLES ± 1/2°		

REQ. PER UNIT	MODEL	SECTION	ASSY. NO.	DATE
	QDP-9C1S4			9-28-66
USED ON				

THE TECHNICAL MATERIEL CORP. MAMARONECK, NEW YORK		DRAWN: [Signature]		CHECKED: [Signature]		FINAL APPROVAL: [Signature]	
STOCK SIZE		QUICK DISCONNECT PATCH PANEL ASSEMBLY (LC TO QDS)					
MATERIAL		QDP-9C1S4					
TYPE & TEMPER		HEAT TREAT. SPEC.		ELEC. DES. APP.		MECH. DES. APP.	
TMC SMOOTH GRAY, SEMI-GLOSS ENAMEL				[Signature]		[Signature]	
FINISH & SPEC. NO.				SHEET		OF	

QDP-9C1S4