

IF IT IS FOUND DESIRABLE TO CHANGE ANY TOLERANCE OR OTHER DETAIL SPECIFIED ON THIS DRAWING NOTIFY THE PURCHASER PROMPTLY.

MAXIMUM ALLOWABLE TOLERANCES HAVE BEEN DETERMINED AND DEVIATIONS WILL BE CAUSE FOR REJECTION. REMOVE ALL BURRS AND SHARP EDGES.

DIMENSIONS IN INCHES UNLESS OTHERWISE SPECIFIED

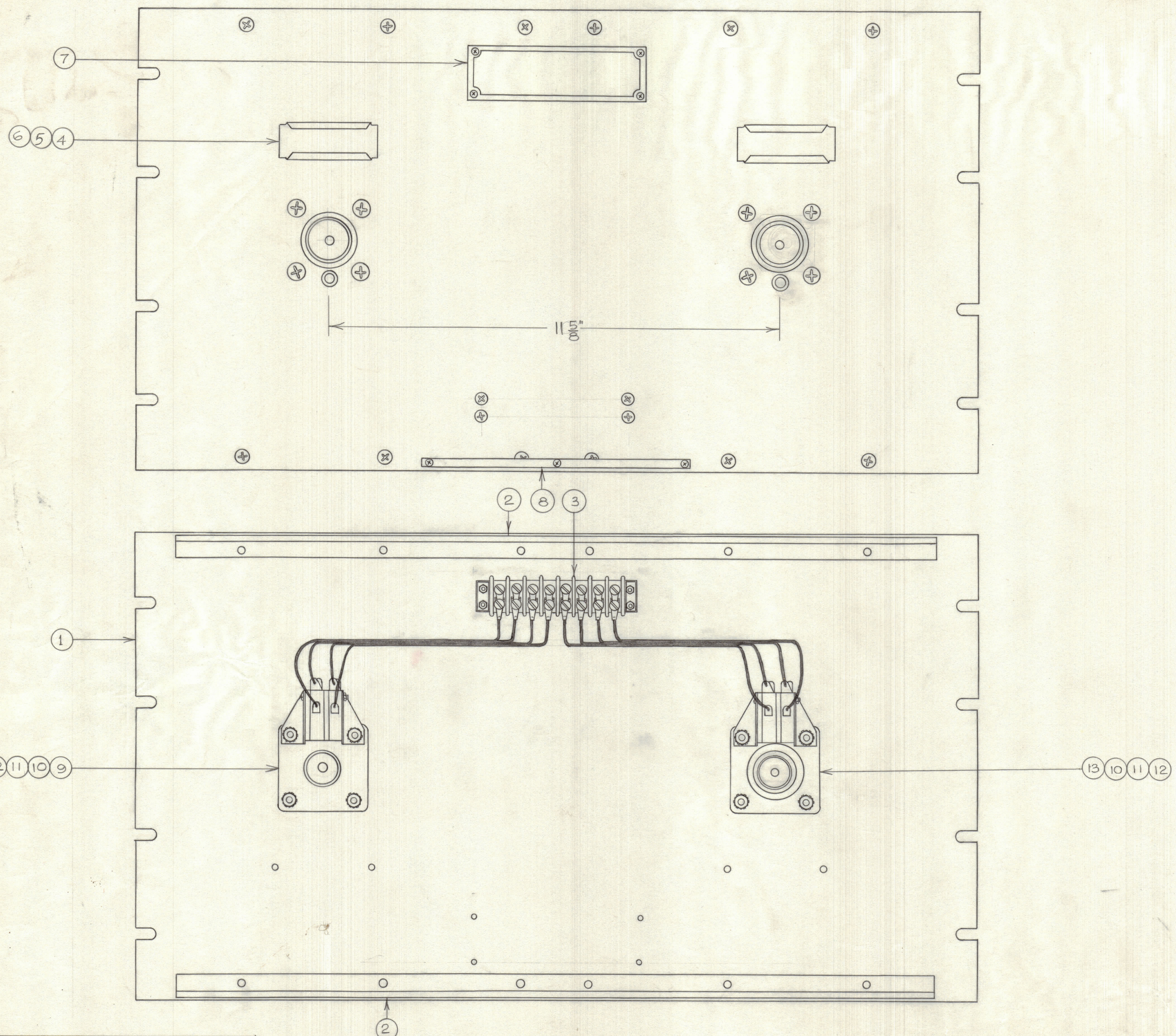
| ISSUE | ITEM | CHANGED FROM | DATE | CN. NO. | DRAFTS | CHECKER | ENG. APP. |
|-------|------|--------------|------|---------|--------|---------|-----------|
| | | | | | | | |

NOTICE TO PERSONS RECEIVING THIS DRAWING

THE TECHNICAL MATERIEL CORPORATION claims proprietary right in the material disclosed herein. This drawing is issued in confidence for engineering information only and may not be reproduced or used to manufacture anything shown herein without permission from THE TECHNICAL MATERIEL CORPORATION to the user. This drawing is loaned for mutual assistance and is subject to recall at any time.

Property of:
THE TECHNICAL MATERIEL CORPORATION
MAMARONECK, NEW YORK

| REQ. | ITEM | PART NO. | DESCRIPTION | SYMBOL |
|------|------|----------|--------------------------|--------|
| 1 | 1 | MS157-65 | PANEL, FRONT | |
| 2 | 2 | PM 490 | BRACE, PANEL | |
| 1 | 3 | TM102-8 | TERMINAL BOARD | |
| 2 | 4 | MS2669 | CARD HOLDER | |
| 2 | 5 | PX 623-1 | GUARD, PLASTIC | |
| 2 | 6 | PR103-1 | TAB, PAPER | |
| 1 | 7 | NP 394 | NAMEPLATE, WARNING | |
| 1 | 8 | NP 250 | —————, IDENT. | |
| 1 | 9 | JJ 231 | CONNECTOR, RECEPTACLE | |
| 4 | 10 | SW189 | SWITCH, MICRO | |
| 2 | 11 | PM427 | PLUNGER, SWITCH. | |
| 2 | 12 | BB 115 | BEARING OLITE P/O MS2673 | |
| 1 | 13 | JJ 174 | CONNECTOR, RECEPTACLE | |



TOLERANCES

| ALL OTHERS | DEC. DIM. ± | FRAC. DIM. ± | ANGULAR DIM. ± |
|------------|-------------|--------------|----------------|
| | | | |

SCALE:

DRILL, PUNCH, COMMERCIAL STOCK SIZES AND MANUFACTURERS' TOLERANCES ARE NOT INCLUDED.

MODEL: _____ PROJECT NO.: _____ ASS'Y. NO.: _____ DATE: APR 30/62

USED ON: _____

| | | | |
|--------------------|--|--|----------------|
| STOCK SIZE | | TMC (Canada) LIMITED OTTAWA ONTARIO | |
| MATERIAL | | ASSEMBLY | |
| WEIGHT PER PC | | TRANSMITTER PATCHING | |
| TYPE & TEMPER | | JPC | |
| HEAT TREAT SPEC | | CHECKED | FINAL APPROVAL |
| FINISH & SPEC. NO. | | QDP8-9F252 | |