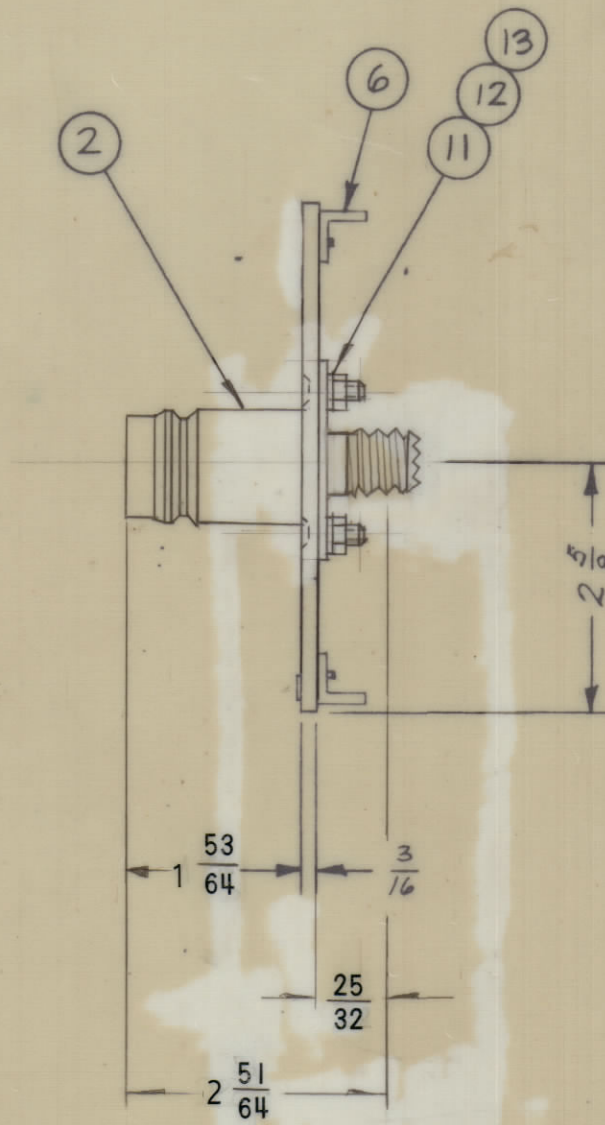
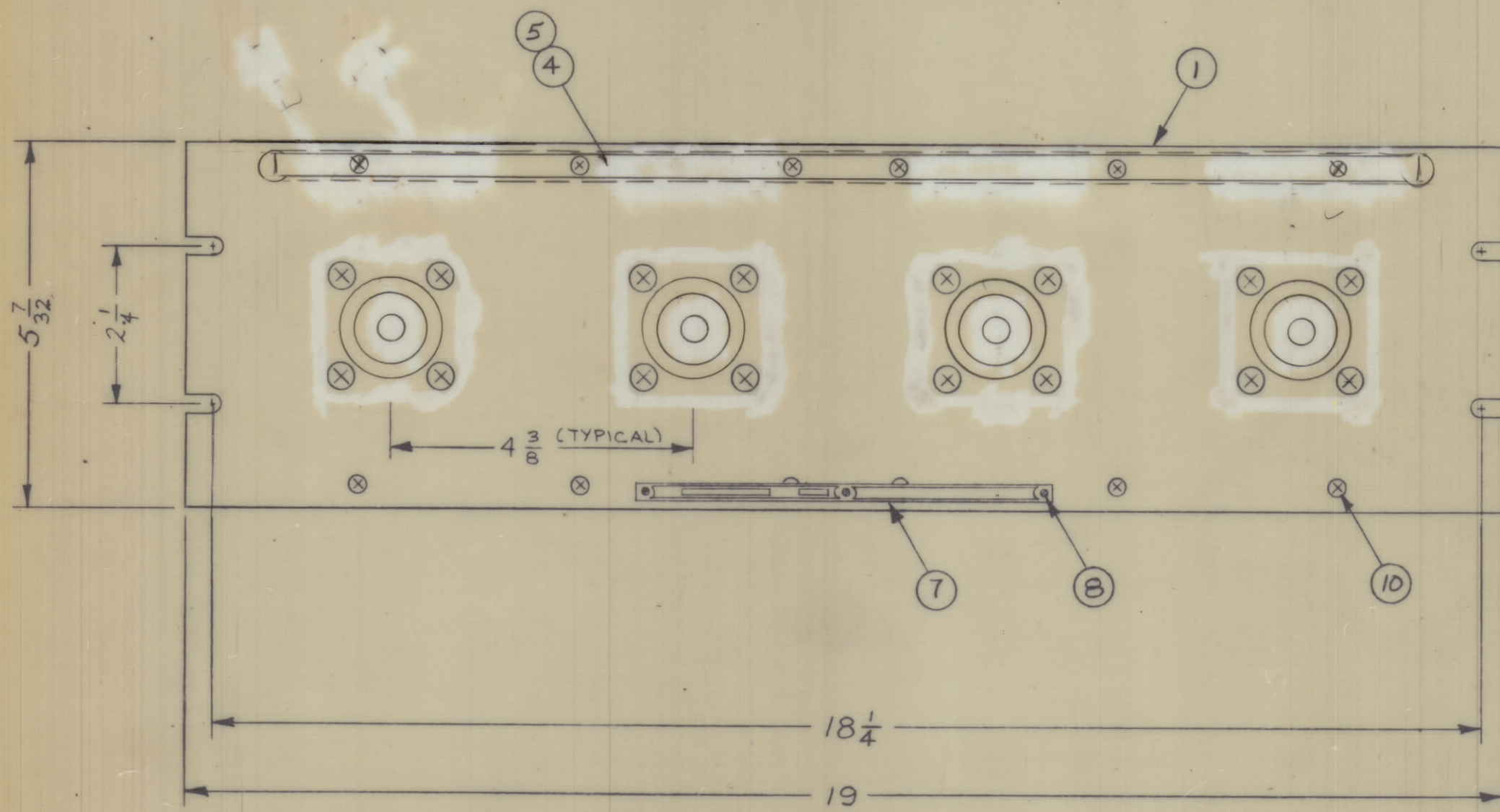


REVISIONS					
ZONE	SYM	DESCRIPTION	DATE	E.M.N. NO.	APPD
	Ø	ORIGINAL RELEASE FOR PROD.	11/21/71		
	Δ	ITE 3 MS 576 & ITEM 9 DELETED, PICT. UPDATED CHANGE ITEM 4 & ITEM 5	4-5-84	22051	GDL



QTY./UNIT	MODEL USED ON	ASS'Y. NO.
1	QDP-7C2X4	

REQ'D.	ITEM	PART NUMBER	DESCRIPTION	SYMBOL
X	14	S-721	TEST PROCEDURE	
16	13	NTH 1032 BN 12	NUT, HEXAGON	
16	12	LWE 10 MRN	WASHER, LOCK, EXTERNAL	
16	11	SCFP1032BN9	SCREW, MACHINE	
12	10	SCFP0632BN5	SCREW, MACHINE	
	9			
3	8	SFB0256 SN3	SCREW, THREAD CUTTING	
1	7	NP-250	NAMEPLATE, IDENTIFICATION	
2	6	PM-490	BRACE, PANEL	
1	5	PX 396-17	GUARD, TAB	
1	4	PR 396-17	TAB, PAPER	
	3			
4	2	JJ-324	ADAPTER, CONNECTOR	
1	1	MS-1078-1	MACHINING, FRONT PANEL	

MATERIAL				LIST OF MATERIAL			
ALUMINUM				THE TECHNICAL MATERIEL CORP. MAMARONECK, NEW YORK			
FINISH TMC SMOOTH GRAY SEMI-GLOSS ENAMEL				TITLE PATCH PANEL, QUICK DISCONNECT QDL TO QDS			
DRAWN		DATE		FINAL APPROVAL		DATE	
CHECKED		DATE		DATE		DATE	
ELECT. DES.		DATE		DATE		DATE	
MECH. DES.		DATE		DATE		DATE	

SCALE	CODE	ASS'Y. NO.

NOTES

THE CONTENTS OF THIS DRAWING ARE THE EXCLUSIVE PROPERTY OF THE TECHNICAL MATERIEL CORP. ITS UNAUTHORIZED USE OR REPRODUCTION IN WHOLE OR IN PART IS STRICTLY FORBIDDEN.

UNLESS OTHERWISE SPECIFIED DIMENSIONS ARE IN INCHES AND INCLUDE CHEMICALLY APPLIED OR PLATED FINISHES

DECIMALS .X ± .05 .XX ± .01 .XXX ± .005

FRACTIONS ± 1/64 ANGLES ± 0° 30'

QDP-7C2X4 A

QDP-7C2X4