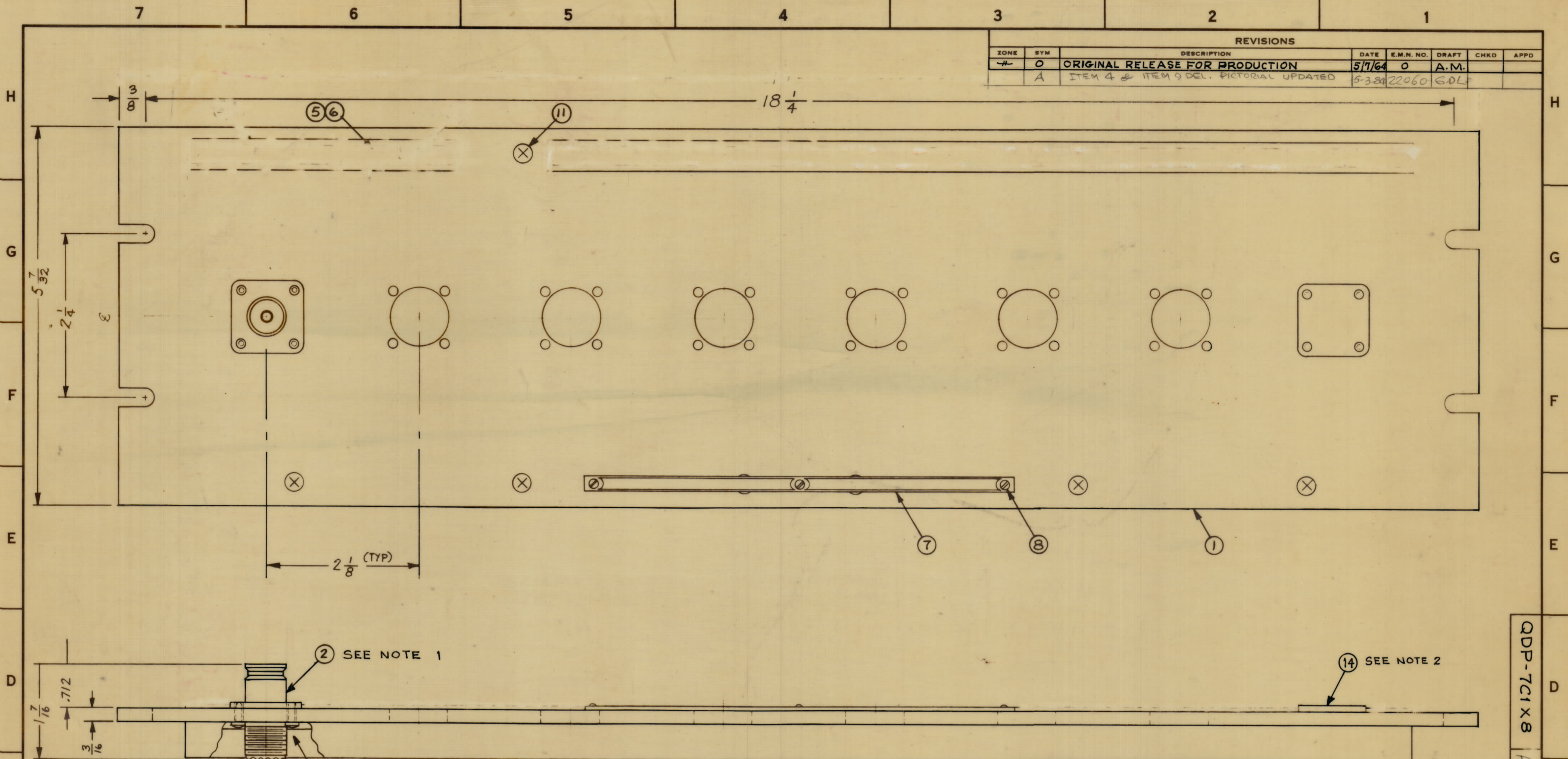


REVISIONS							
ZONE	SYM	DESCRIPTION	DATE	E.M.N. NO.	DRAFT	CHKD	APPD
-#	0	ORIGINAL RELEASE FOR PRODUCTION	5/7/64	0	A.M.		
	A	ITEM 4 & ITEM 9 DEL. PICTORIAL UPDATED	5-3-64	22060	G.D.L.		



MODEL	QUAN ITEM 2	QUAN ITEM 14
QDP-7C1x1	1	7
QDP-7C1x2	2	6
QDP-7C1x3	3	5
QDP-7C1x4	4	4
QDP-7C1x5	5	3
QDP-7C1x6	6	2
QDP-7C1x7	7	1
QDP-7C1x8	8	0

- NOTE:**
- CONNECTORS ARE MOUNTED FROM LEFT TO RIGHT.
 - WHEN CONNECTOR MOUNTING HOLES ARE NOT UTILIZED, COVER BLANKS (ITEM 14) ARE TO BE MOUNTED ON FACE OF FRONT PANEL.
 - REFER TO CHART FOR APPLICATION OF COVER BLANK (ITEM 14) WHEN REQUIRED.

SEE CHART	ITEM	PART NUMBER	DESCRIPTION	SYMBOL
14	MS-3015-2		COVER, BLANK (QDS)	
X	13	S-721	TEST PROCEDURE	
32	12	LWE 04 MRN	WASHER, LOCK, EXTERNAL	
12	11	SCFP0632BN5	SCREW, MACHINE	
32	10	SCBPO440BN5	SCREW, MACHINE	
	9			
3	8	SFB0256 SN3	SCREW, THREAD CUTTING	
1	7	NP-250	NAMEPLATE	
1	6	PX-396-17	GUARD, TAB	
1	5	PR-101-17	TAB, PAPER	
	4			
2	3	PM-490	BRACE, PANEL	
SEE CHART	2	JJ-147	RECEPTACLE, CONNECTOR	
1	1	MS-3029	PANEL, FRONT	

MARTINENGO		LIST OF MATERIAL	
MATERIAL	ALUMINUM	THE TECHNICAL MATERIEL CORP. MAMARONECK, NEW YORK	
FINISH	TMC SMOOTH GRAY SEMI-GLOSS ENAMEL	TITLE PATCH PANEL, R.F. "UHF" TO "QDS"	
UNLESS OTHERWISE SPECIFIED DIMENSIONS ARE IN INCHES AND INCLUDE CHEMICALLY APPLIED OR PLATED FINISHES		DRAWN M. TANTILLO	DATE 4-30-64
DECIMALS .X ± .05 .XX ± .01 .XXX ± .005		CHECKED <i>[Signature]</i>	DATE 4-30-64
FRACTIONS ± 1/64 ANGLES ± 0° 30'		ELECT. DES. <i>[Signature]</i>	DATE 4-30-64
TOLERANCES		MECH. DES. <i>[Signature]</i>	DATE 4-30-64
THE CONTENTS OF THIS DRAWING ARE THE EXCLUSIVE PROPERTY OF THE TECHNICAL MATERIEL CORP. ITS UNAUTHORIZED USE OR REPRODUCTION IN WHOLE OR IN PART IS STRICTLY FORBIDDEN.		FINAL APPROVAL <i>[Signature]</i>	
NOTES		QDP-7C1X8	
		SHEET	
		REV. LTR.	

QDP-7C1X8