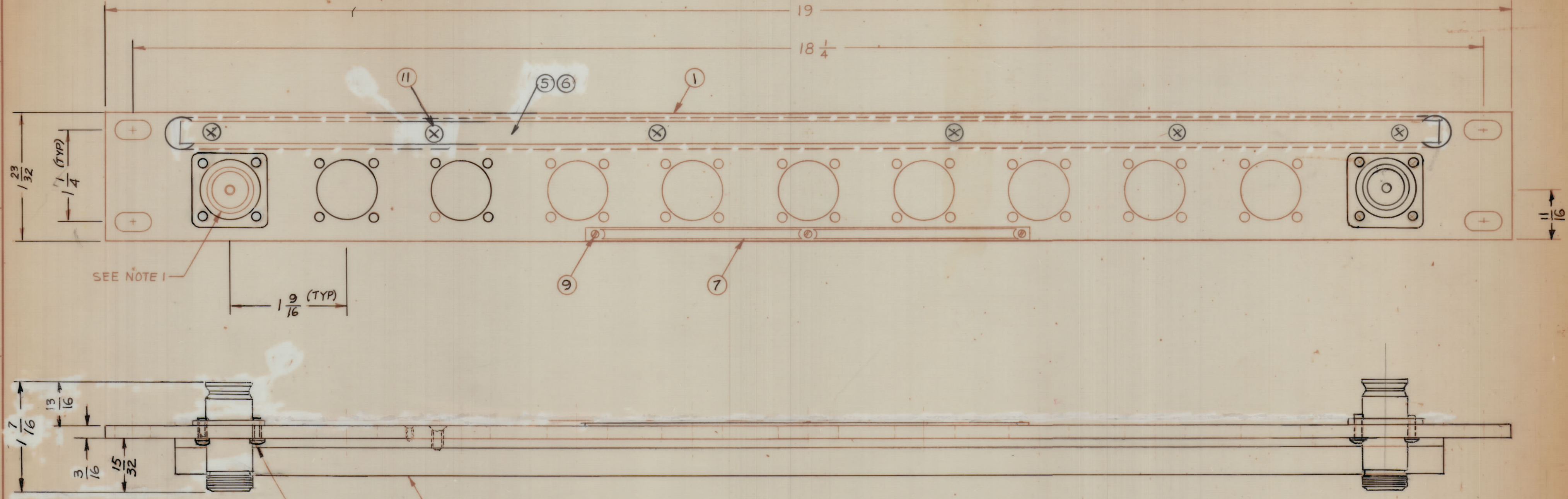
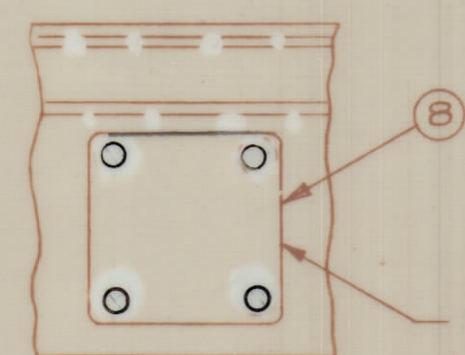


REVISIONS						
ZONE	SYM	DESCRIPTION	DATE	E.M.N. NO.	DRAFT	CHKD
E	A	ITEM (2) REVERSED	11-5-62	7595	GH	JLB
	B	IT 8 WAS MS 3015-1. IT 12 WAS SCBPO440BNB DELETED. IT 14 (NTH0440BNB)	12-15-66	17480	RME	AM
	C	ITEM 4, 5 & 10 DELETED. PICT. UPDATED	4-12-83	22038	GAL	



SEE NOTE 1



- NOTE:
- CONNECTORS ARE MOUNTED FROM LEFT TO RIGHT.
 - WHEN CONNECTOR MOUNTING HOLES ARE NOT UTILIZED, COVER BLANKS (ITEM 8) ARE TO BE MOUNTED ON FACE OF FRONT PANEL.
 - REFER TO CHART FOR APPLICATION OF COVER BLANK (ITEM 8) WHEN REQUIRED.

QDP-6AIX11	11	0
QDP-6AIX10	10	1
QDP-6AIX9	9	2
QDP-6AIX8	8	3
QDP-6AIX7	7	4
QDP-6AIX6	6	5
QDP-6AIX5	5	6
QDP-6AIX4	4	7
QDP-6AIX3	3	8
QDP-6AIX2	2	9
QDP-6AIX1	1	10
MODEL	QUAN. ITEM 2	QUAN. ITEM 8

REQ'D.	ITEM	PART NUMBER	DESCRIPTION	SYMBOL
X	15	S-721	TEST PROCEDURE	
	14	DELETED		
44	13	LWE 04 MRN	WASHER, LOCK, EXTERNAL	
44	12	SCBPO440BN6	SCREW, MACHINE	
6	11	SCFP0632 BN5	SCREW, MACHINE	
	10			
3	9	SFB0256 SN3	SCREW, THREAD CUTTING	
SEE CHART	8	MS-3015-2	COVER, BLANK QDS	
1	7	NP-250	NAMEPLATE, IDENTIFICATION	
1	6	PX-396-17	GUARD TAB	
1	5	PR-101-17	TAB, PAPER	
	4			
1	3	PM-486	BRACE, PANEL	
SEE CHART	2	JJ-168	ADAPTER, CONNECTOR, RF	
1	1	MS-1233	MACHINING, FRONT PANEL	

MARTINENGO LIST OF MATERIAL

MATERIAL ALUMINUM	THE TECHNICAL MATERIEL CORP. MAMARONECK, NEW YORK		
FINISH TMC SMOOTH GRAY SEMI-GLOSS ENAMEL	TITLE PATCH PANEL, R.F. QDS TO N		
UNLESS OTHERWISE SPECIFIED DIMENSIONS ARE IN INCHES AND INCLUDE CHEMICALLY APPLIED OR PLATED FINISHES	DRAWN R.J. TANTILLO	DATE 10-2-62	FINAL APPROVAL
DECIMALS .X ± .05 .XX ± .01 .XXX ± .005	CHECKED	DATE 10-4-62	DATE 10-4-62
FRACTIONS ± 1/64 ANGLES ± 0° 30'	ELECT. DES.	DATE	DATE
TOLERANCES	MECH. DES.	DATE	DATE

QDP-6AIX11

THE CONTENTS OF THIS DRAWING ARE THE EXCLUSIVE PROPERTY OF THE TECHNICAL MATERIEL CORP. ITS UNAUTHORIZED USE OR REPRODUCTION IN WHOLE OR IN PART IS STRICTLY FORBIDDEN.

QDP-6AIX11