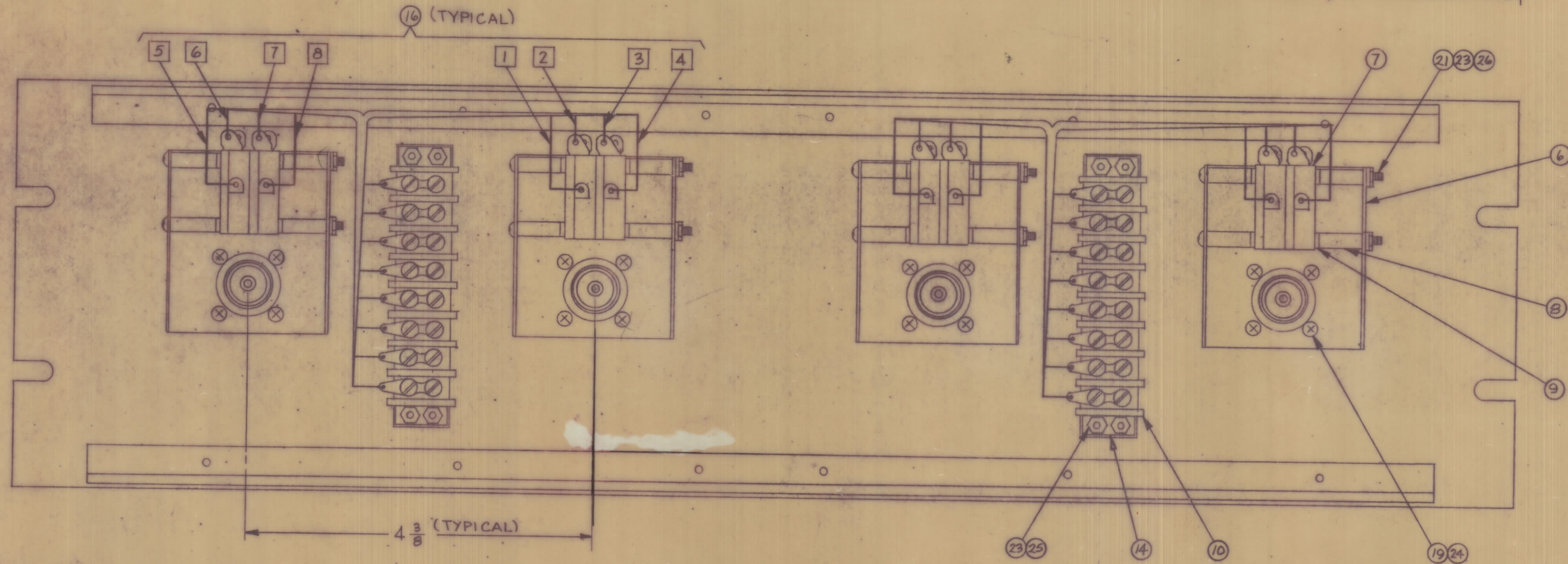
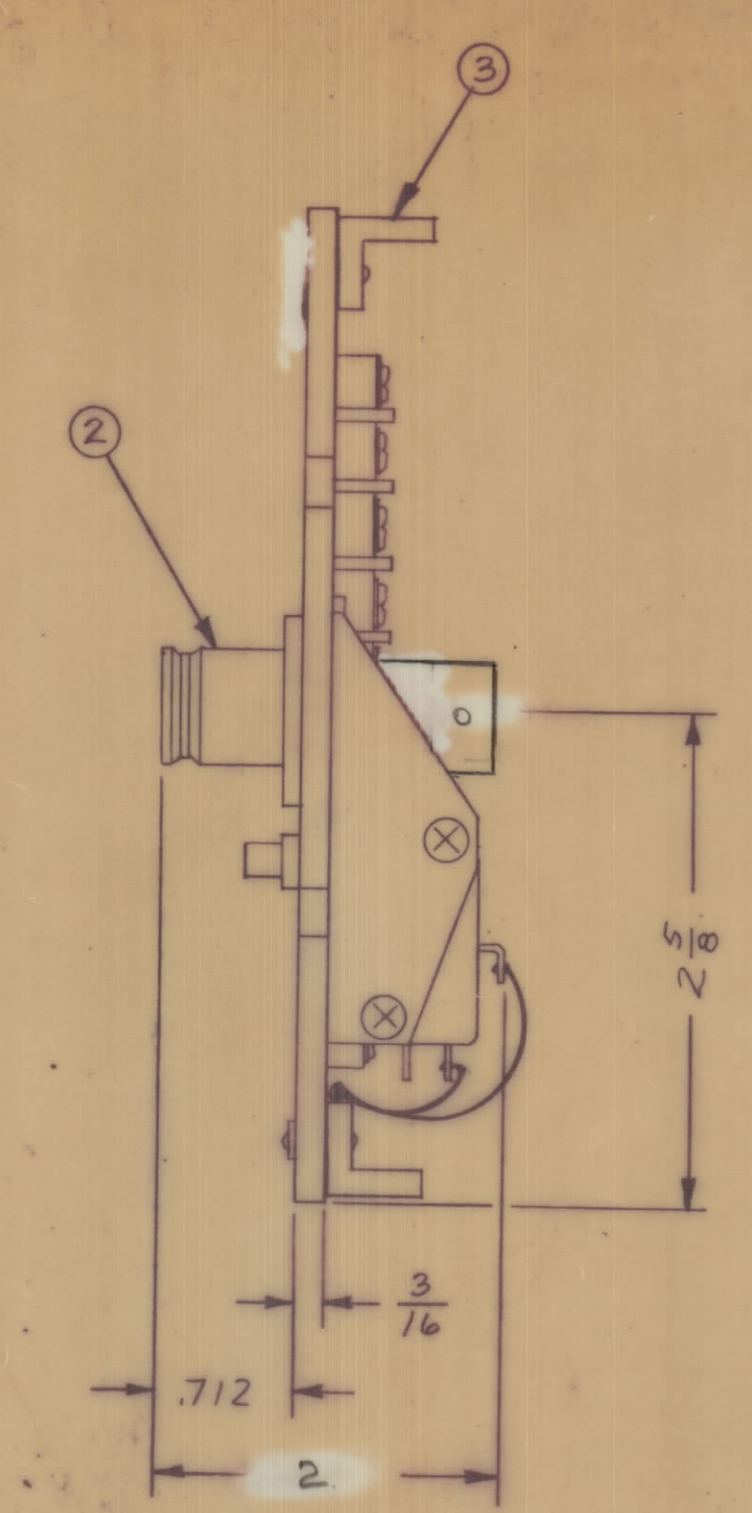
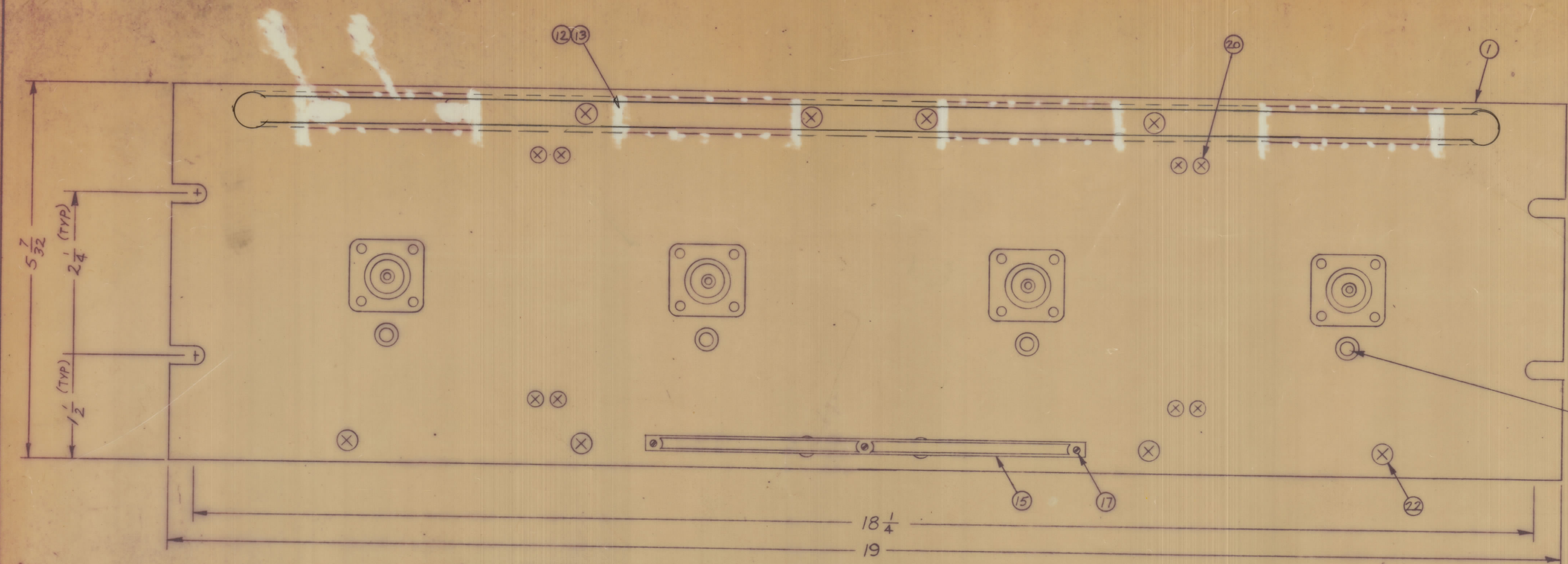


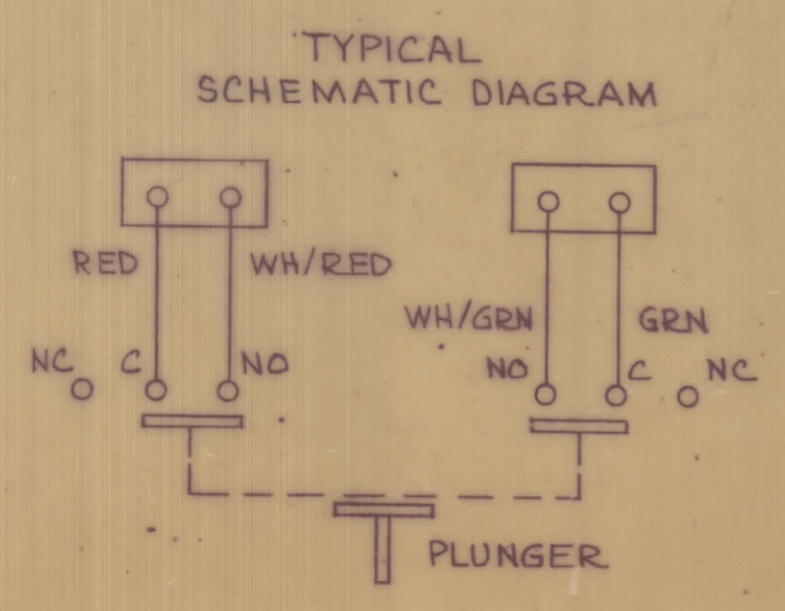
REVISIONS						
ZONE	SYM	DESCRIPTION	DATE	S.M.N. NO.	DRAFT	CHKD
	Ø	ORIGINAL RELEASE FOR PRODUCTION	1/19/46	-#	Jc	
A		ITEM (21) WAS SCFP, (18) WAS (BN4), (5) WAS PM427-2	2-4-66	15695	JA	
B		ITEM (1) & (18) DEL. PICTORIAL UPDATED	1.8.66	22055	DL	



QTY	UNIT	DESCRIPTION	SYMBOL
X	28	S-716	TEST PROCEDURE
2	27	TM-105-BAR	FANNING STRIP (LOOSE ITEM)
8	26	NTH 0440 BNB	NUT, HEXAGON
8	25	NTH 0440 BNG	NUT, HEXAGON
16	24	LWS04MRN	LOCKWASHER, SPLIT
16	23	LWE04MRN	LOCKWASHER EXTERNAL
12	22	SCFP0632 BNS	SCREW, MACHINE
8	21	SCBP0440 BN36	SCREW, MACHINE
8	20	SCFP0440 BN10	SCREW, MACHINE
16	19	SCBP0440 BNB	SCREW, MACHINE
	18		
3	17	SFB0256 SN3	SCREW, THREAD CUTTING
2	16	CA-345	CABLE ASSEMBLY
1	15	NP-250	NAMEPLATE, IDENTIFICATION
2	14	MS-154-1	STRADDLE, PLATE
1	13	PR-101-	FREQUENCY, TAB
1	12	PX-396-	GUARD, FREQUENCY TAB
	11		
2	10	TM-102-8	TERMINAL, STRIP BARRIER TYPE
16	9	WA-109-17	WASHER, FIBER
16	8	PM-426	SPACER, SWITCH
8	7	SW-189	SWITCH, MICRO, PUSH
4	6	MS-1124	BRACKET, SWITCH
4	5	PM-427-6	PLUNGER, SWITCH
4	4	BB-115	BEARING OILITE (P/A-1448)
2	3	PM-490	BRACE, PANEL
4	2	JJ-179	CONNECTOR, RECEPTACLE
1	1	A-1448-	MACHINING, FRONT PANEL

ITEM 16 INSTALLATION COLOR CODE

- 1 RED
- 2 WHITE/RED
- 3 WHITE/GREEN
- 4 GREEN
- 5 RED
- 6 WHITE/RED
- 7 WHITE/GREEN
- 8 GREEN



NOTICE TO PERSONS RECEIVING THIS DRAWING
 THE TECHNICAL MATERIEL CORPORATION claims proprietary right in the mechanical drawings herein. This drawing is issued in strict confidence for manufacturing information only and may not be reproduced or used to manufacture any other device without the permission of THE TECHNICAL MATERIEL CORPORATION. This drawing is issued for mutual assistance and is subject to recall at any time.

Property of
 THE TECHNICAL MATERIEL CORPORATION
 MAMARONECK, NEW YORK

ITEM 27 SUPPLIED AS LOOSE ITEM

NOTES

1	QDP-5C154	ASBY. NO.
SCALE	CODE	
THE CONTENTS OF THIS DRAWING ARE THE EXCLUSIVE PROPERTY OF THE TECHNICAL MATERIEL CORP. ITS UNAUTHORIZED USE OR REPRODUCTION IN WHOLE OR IN PART IS STRICTLY FORBIDDEN.		
DECIMALS	FRACTIONS	TOLERANCES
3 ± .01	1/16	± 1/64
11.2 ± .01	ANGLES	± 30'
331 ± .005		± 60'

MATERIAL ALUMINUM		THE TECHNICAL MATERIEL CORP. MAMARONECK, NEW YORK	
FINISH TMC SMOOTH GRAY SEMI-GLOSS ENAMEL		TITLE PATCH PANEL, QUICK DISCONNECT QDS TO	
UNLESS OTHERWISE SPECIFIED DIMENSIONS ARE IN INCHES AND INCLUDE CHEMICALLY APPLIED OR PLATED FINISHES		DRAWN <i>abm</i>	DATE 12-23-45
		CHECKED <i>abm</i>	APPROVAL OCTAVIO <i>[Signature]</i>
		ELECT. DES. <i>[Signature]</i>	DATE 1/18/46
		MECH. DES. <i>[Signature]</i>	DATE 12-23-45
		QDP 5C154	
		SHEET	

QDP-5C154 B