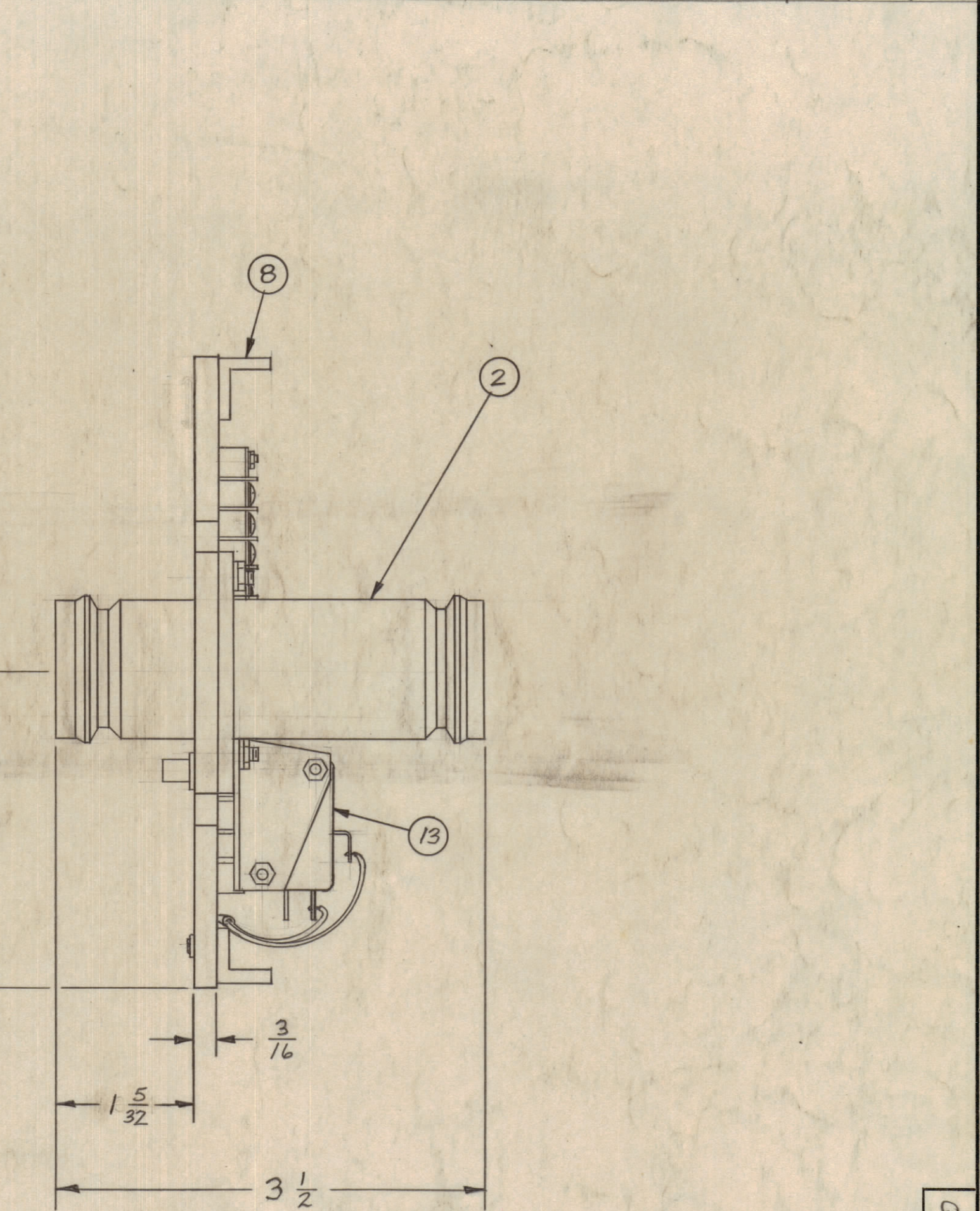
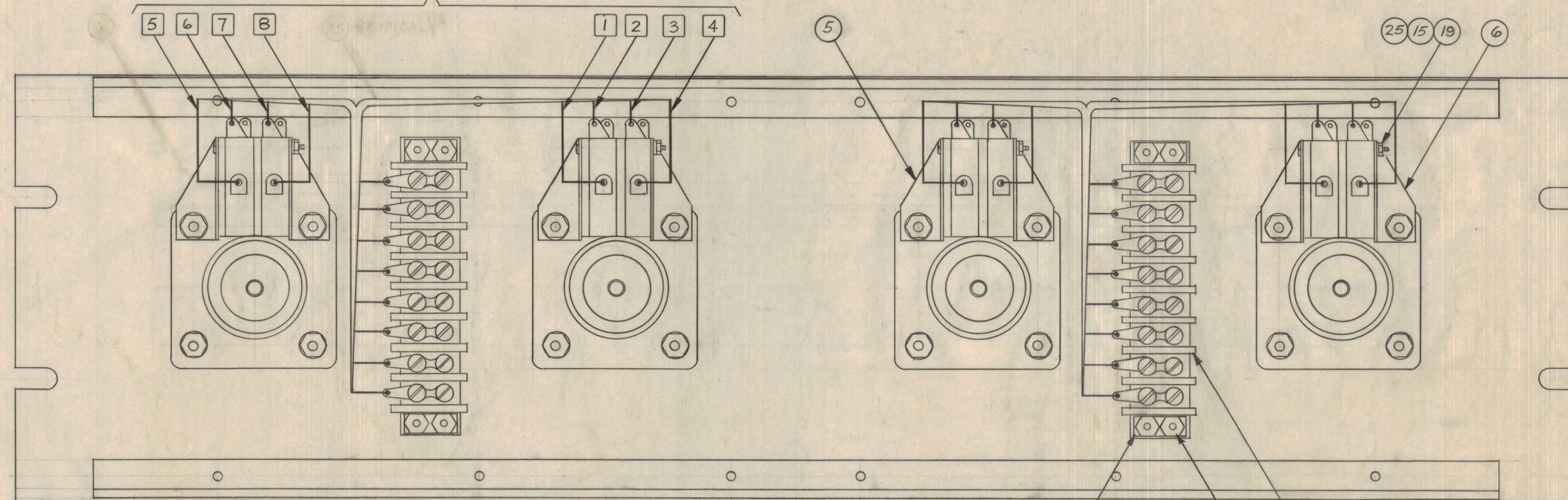
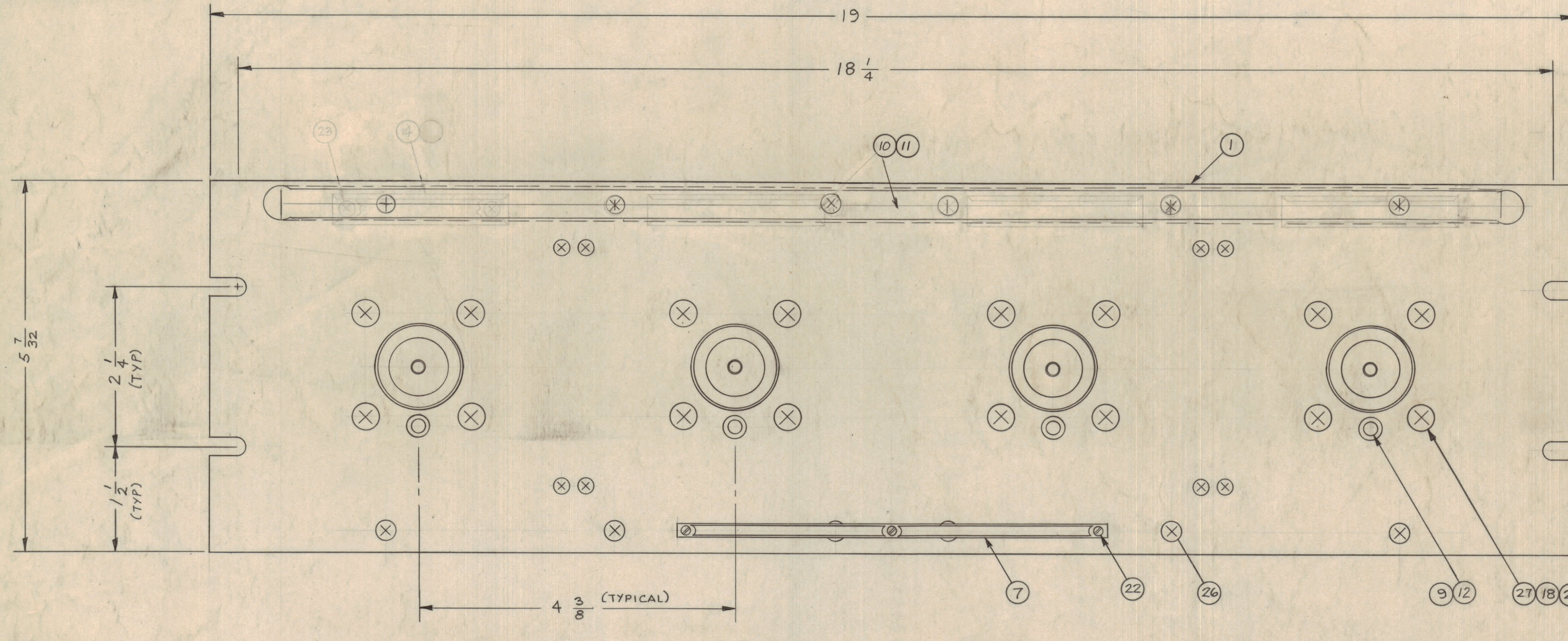


ZONE		SYM	DESCRIPTION	DATE	EM.N. NO.	DRAFT	CHKD	APPD
A			ITEM 4 PM 576 & ITEM 23 0848 TUBULAR DEFLECTOR	4-8-62	22050	CBL		



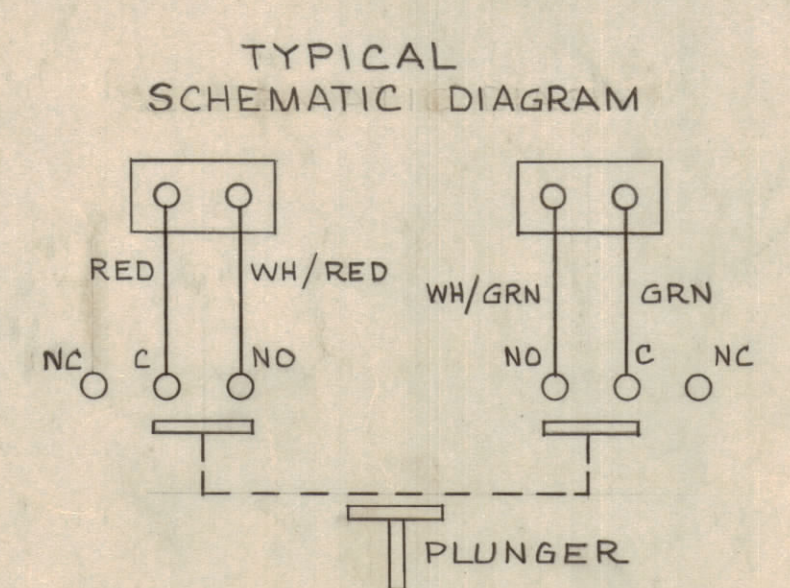
NOTICE TO PERSONS RECEIVING THIS DRAWING
 THE TECHNICAL MATERIEL CORPORATION claims proprietary right in the mechanical design and construction of the equipment shown on this drawing. This drawing is issued in confidence and is not to be reproduced or used for manufacturing or maintenance purposes without the written permission of the TECHNICAL MATERIEL CORPORATION. This drawing is loaned for mutual assistance and is subject to recall at any time.

Property of:
 THE TECHNICAL MATERIEL CORPORATION
 MAMARONECK, NEW YORK



ITEM 15 INSTALLATION (COLOR CODE)

- 1 RED
- 2 WHITE/RED
- 3 WHITE/GREEN
- 4 GREEN
- 5 RED
- 6 WHITE/RED
- 7 WHITE/GREEN
- 8 GREEN



ITEM 16 SUPPLIED AS LOOSE ITEM

QTY	ITEM	PART NUMBER	DESCRIPTION	SYMBOL
X	28	S-716	TEST PROCEDURE	
16	27	SCFP1032 BN 8	SCREW, MACHINE	
12	26	SCFP0632 BN 5	SCREW, MACHINE	
8	25	SCBP0440BN16	SCREW, MACHINE	
8	24	SCFP0440BN10	SCREW, MACHINE	
	23	SCFP0440BN10	SCREW, MACHINE	
3	22	SFB0256 SN 3	SCREW, THREAD CUTTING	
16	21	NTH 1032 BN 10	NUT, HEX	
8	20	NTH 0440 BN 8	NUT, HEX	
8	19	NTH 0440 BN 6	NUT, HEX	
16	18	LWE 10 MRN	LOCK WASHER, EXTERNAL	
16	17	LWE 04 MRN	LOCK WASHER, EXTERNAL	
2	16	TM-105-8-AR	FANNING STRIP (Loose ITEM)	
2	15	CA-345	CABLE, ASSEMBLY	
2	14	TM-102-8	TERMINAL SWITCH, BARRIER TYPE	
8	13	SW-189	SWITCH, MICRO, PUSH	
4	12	BB-115	BEARING OILITE (P/O A-1349)	
4	11	PX-250	FREQUENCY, CARD	
4	10	PX-249	GUARD, FREQ TAB	
4	9	PM-427-1	PLUNGER, SWITCH	
2	8	PM-490	BRACE, PANEL	
1	7	NP-250	NAMEPLATE, IDENTIFICATION	
4	6	MS-987	BRACKET, SWITCH, RIGHT	
4	5	MS-986	BRACKET, SWITCH, LEFT	
	4		BRIDGE HOLDER	
4	3	MS-154-1	STRADDLE PLATE	
4	2	JJ-138	CONNECTOR RECEPTACLE	
1	1	A-1349-1	FRONT PANEL	

MATERIAL		LIST OF MATERIAL	
ALUMINUM		THE TECHNICAL MATERIEL CORP. MAMARONECK, NEW YORK	
FINISH	TMC SMOOTH GRAY SEMI-GLOSS ENAMEL	TITLE	QUICK DISCONNECT PATCH PANEL ASSEMBLY (QDL TO QDL)
QTY/UNIT	1 QDP-2C2S4	SCALE	1/8" = 1"
MODEL USED ON		ASS'Y. NO.	
CHECKED		DATE	10/11/62
DRAWN	M. J. TANTILLO	DATE	10/11/62
UNLESS OTHERWISE SPECIFIED DIMENSIONS ARE IN INCHES AND INCLUDE CHEMICALLY APPLIED OR PLATED FINISHES		ELECT. DES.	
DECIMALS	X ± .05	MECH. DES.	
FRACTIONS	XX ± .01	DATE	10/11/62
ANGLES	XXX ± .005	ANGLE	± 0° 30'

NOTES

THE CONTENTS OF THIS DRAWING ARE THE EXCLUSIVE PROPERTY OF THE TECHNICAL MATERIEL CORP. ITS UNAUTHORIZED USE OR REPRODUCTION IN WHOLE OR IN PART IS STRICTLY FORBIDDEN.

QDP-2C2S4	1
-----------	---