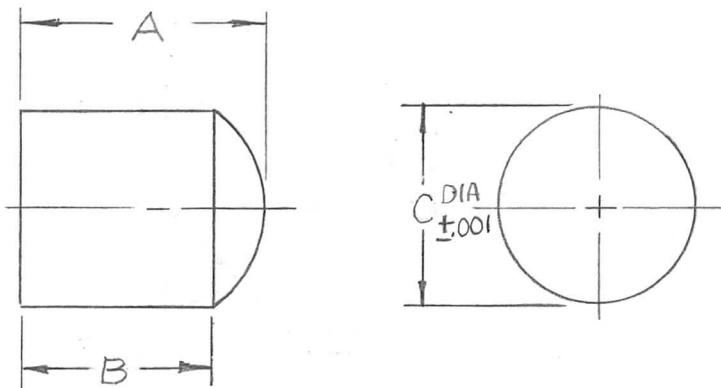


TMC P/N	A	B	C
PX 998	5/16	1/4	.125
PX 998-2	5/8	9/16	.187

REQ. PER UNIT	USED ON		
	MODEL	ASS'Y. NO.	DATE
9	TLAA-25K	A5492	9-14-66

PX998 A



NOTE:
POLISH SMOOTH

REF. MS4964

A	ADDED TMC P/N CHART	5.9.68	18910	HS	1/4	EFM	REQ. ITEM	PART NO.	F. BUDETTI	DESCRIPTION	SYMBOL
Ø	ORIGINAL RELEASE FOR PRODUCTION	11.18.66	Ø	RME			CENTERLESS GROUND RODS		THE TECHNICAL MATERIEL CORP. MAMARONECK, NEW YORK		
X1	MAT'L W/ ±.0005	9-27-66	X1	ARA		BC	STOCK SIZE		ILLUMINATOR, BAND		
X	EXP. RELEASE	9-13-66	X	ARA		OB	REXOLITE				
SYM	DESCRIPTION	DATE	CH. NO.	DRAFTS	CHECKER	ENG. APP.	MATERIAL				
UNLESS OTHERWISE SPECIFIED DIMENSIONS ARE IN INCHES AND INCLUDE CHEMICALLY APPLIED OR PLATED FINISHES		SCALE		4:1			#1422		MA	JCB	OBP
							TYPE & TEMPER	HEAT TREAT. SPEC.	DRAWN	CHECKED	FINAL APPROVAL
DECIMALS .X ± .05 .XX ± .01 .XXX ± .005		FRACTIONS ± 1/64 ANGLES ± 0° 30'		CODE A			FINISH & SPEC. NO.		ELEC. DES. APP.	MECH. DES. APP.	PX 998 A