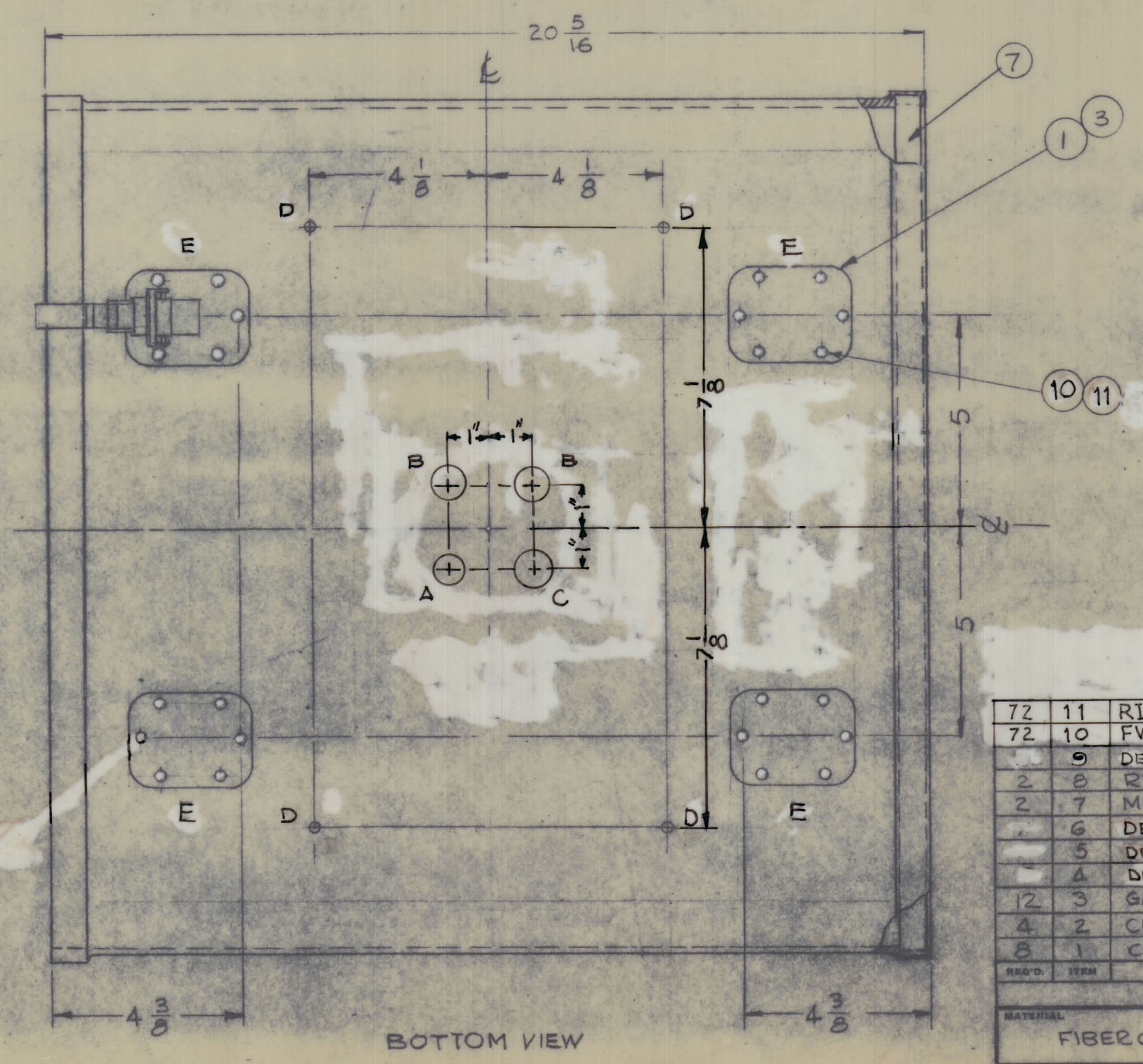
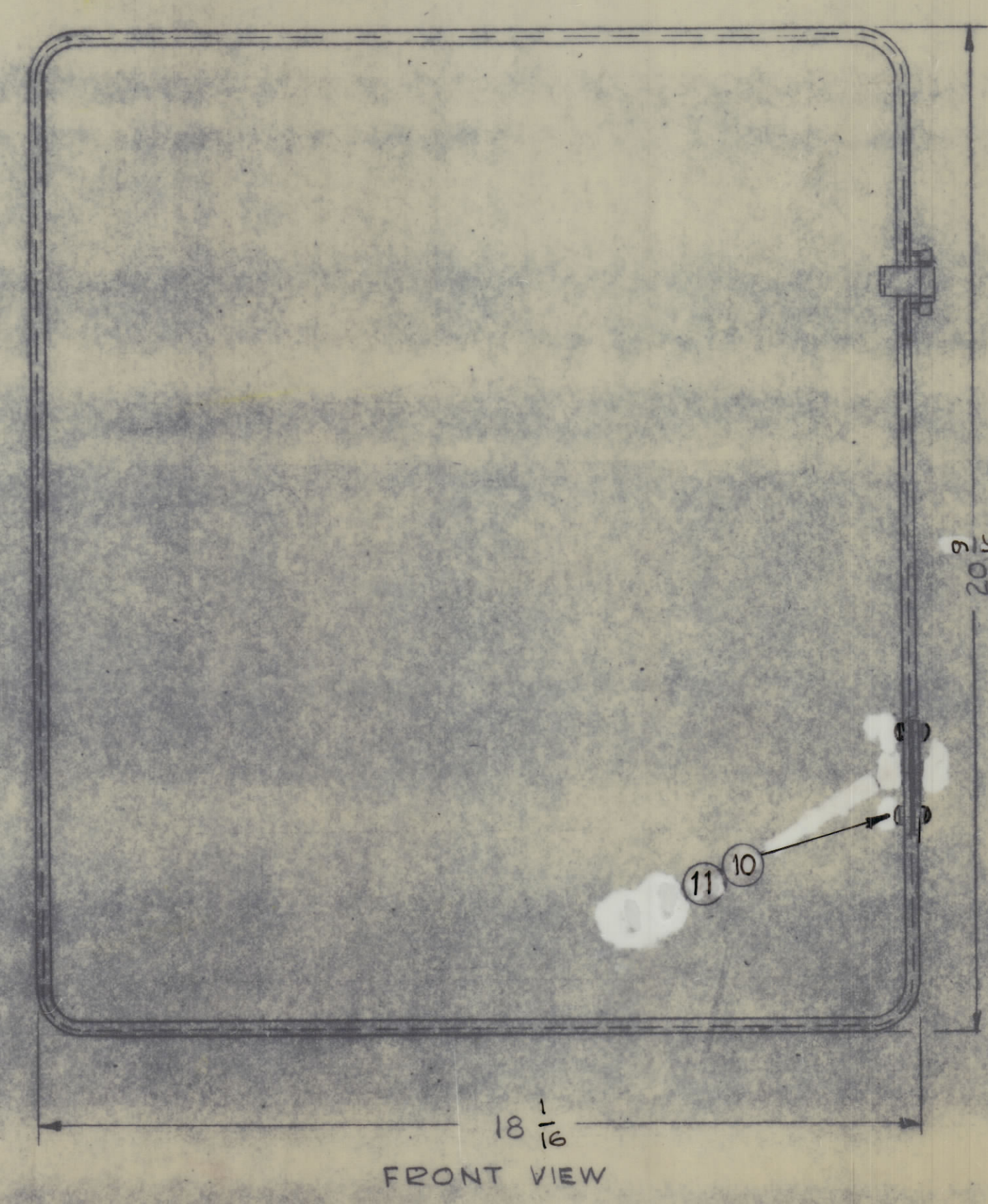
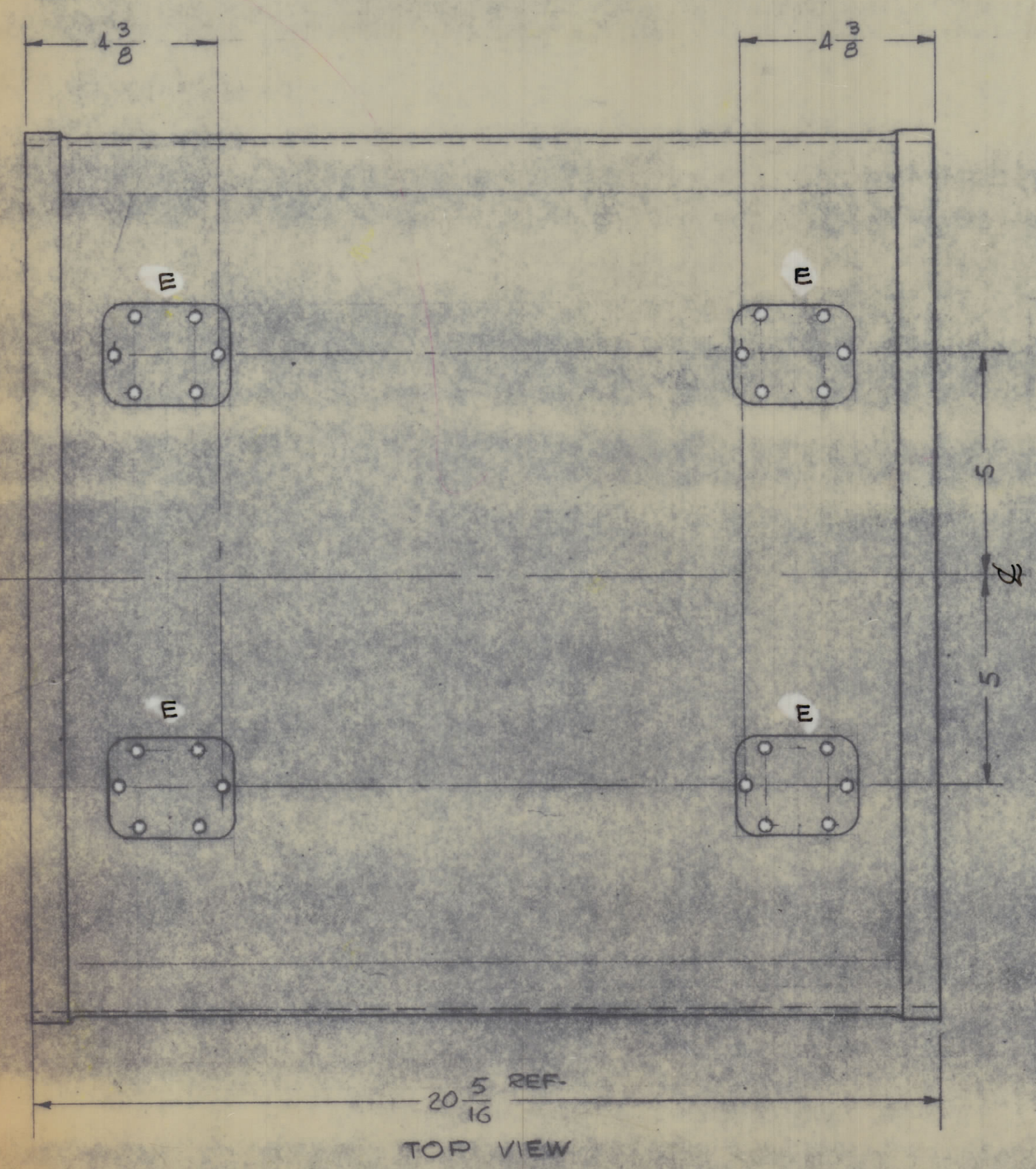
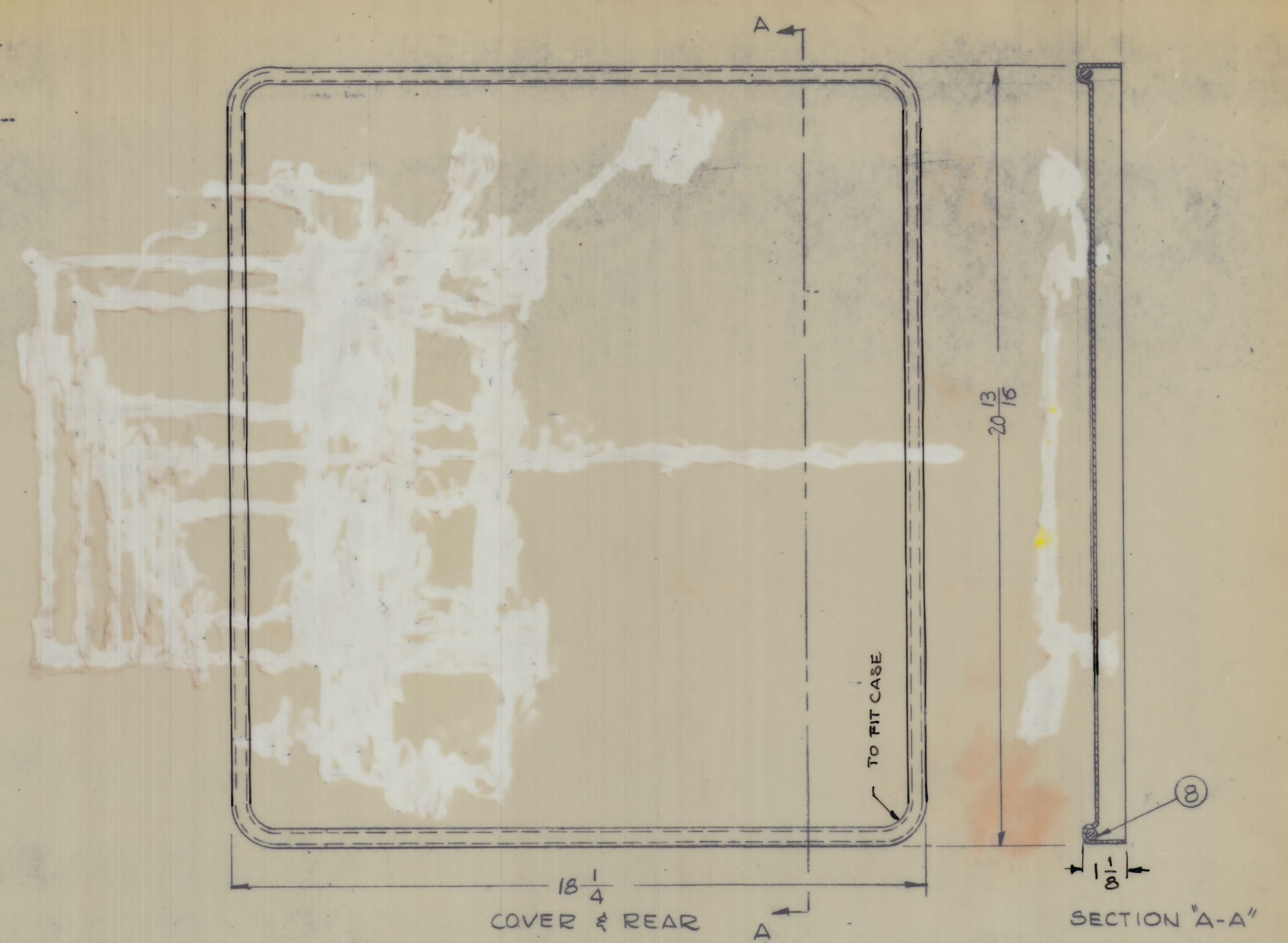
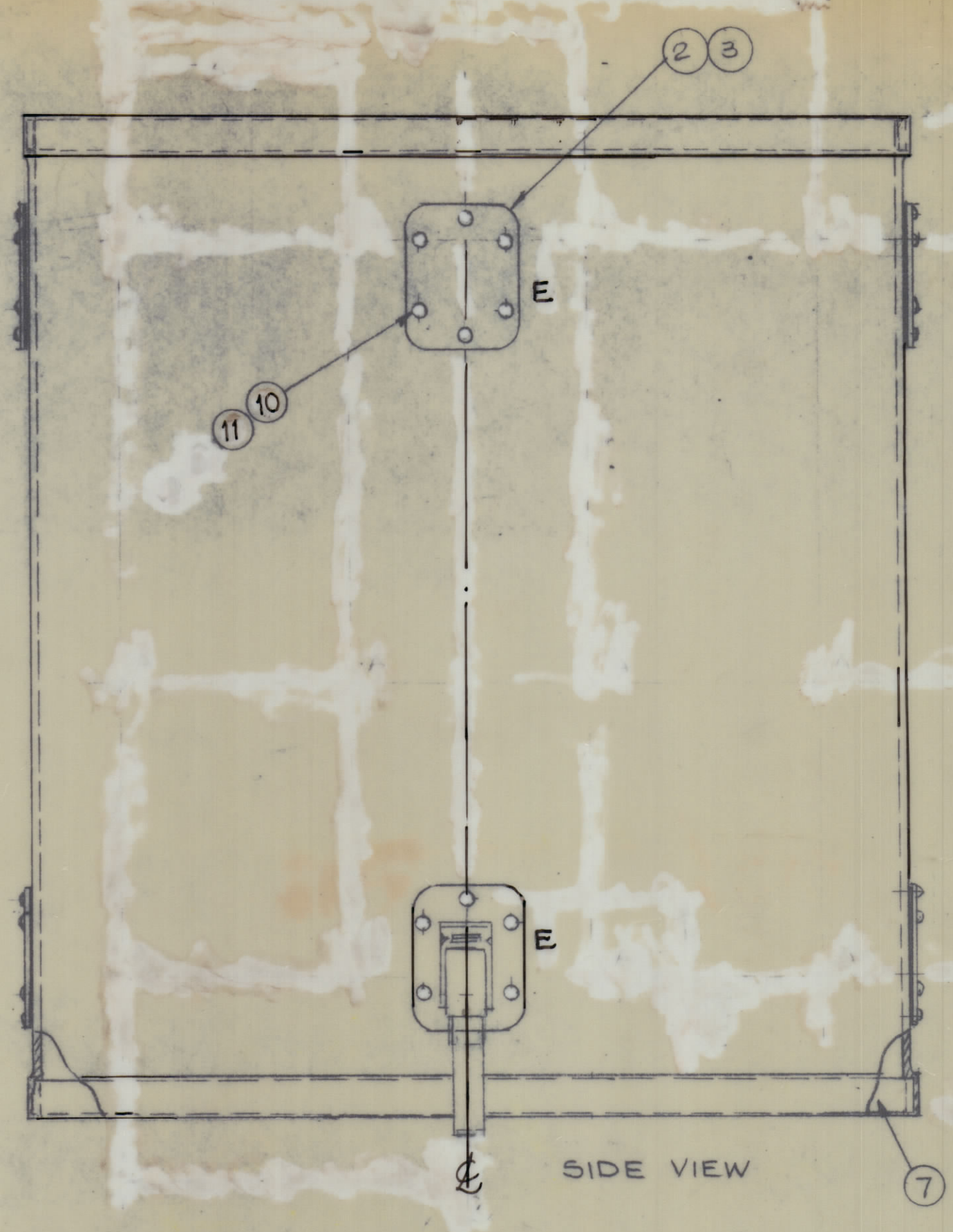
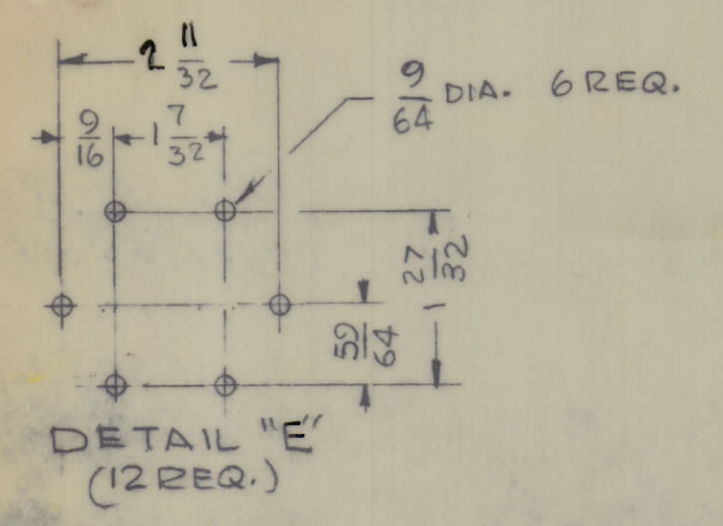


REVOLUTIONS		DATE	E.M.N. NO.	DRAFT	CHKD.	APPR.
DATE	DESCRIPTION					
3-28-44	ORIGINAL RELEASE FOR PRODUCTION			H/LA		
	ADD IT. 10, 11, DELETED IT. 4, 5, 6, 9	162944	17319	RME		

HOLE	DESCRIPTION	REQ.
A	3/4 DIA	1
B	7/8 DIA	2
C	1" DIA	1
D	11/32 DIA	4
E	SEE DETAIL	12



QTY	ITEM	PART NUMBER	DESCRIPTION	SYMBOL
72	11	RI100-125-440	RIVET, BLIND, EXPANSIVE	
72	10	FW0548N	WASHER, FLAT	
	9	DELETED		
2	8	RY 122-5-75	RUB. RD. SECT.	
2	7	MS 1851-2	RING, CASE SUPPORT	
	6	DELETED		
	5	DELETED		
	4	DELETED		
12	3	GA 130	GASKET, CATCH	
4	2	CU 117-2	CATCH, CLAMPING, LK	
8	1	CU 117	CATCH, CLAMPING	

LIST OF MATERIAL		THE TECHNICAL MATERIEL CORP.	
MATERIAL: FIBER GLASS		MAMARONECK, NEW YORK	
FINISH: S756 GRAY SYNTHETIC ENAMEL		TITLE: CASE/COVER	
SCALE: DO NOT SCALE	UNLESS OTHERWISE SPECIFIED DIMENSIONS ARE IN INCHES AND INCLUDE CHEMICALLY APPLIED OR PLATED FINISHES	DRAWN: G.D.L.	DATE: 2-23-46
TOLERANCES: DECIMALS ±.001, .002, .005; FRACTIONS ± 1/64, ANGLES ± 0° 30'		CHECKED: [Signature]	DATE: 3/24/46
THE CONTENTS OF THIS DRAWING ARE THE EXCLUSIVE PROPERTY OF THE TECHNICAL MATERIEL CORP. ITS UNAUTHORIZED USE OR REPRODUCTION IN WHOLE OR IN PART IS STRICTLY FORBIDDEN.		MECH. DES. DATE	FINAL APPROVAL: [Signature]
NOTES		PX 977 A	

PX 977 A

2 ml 28 3/25