

HOLES

A-DELETED

B-7/32 DIA.

C-7/32 DIA.

REQ.

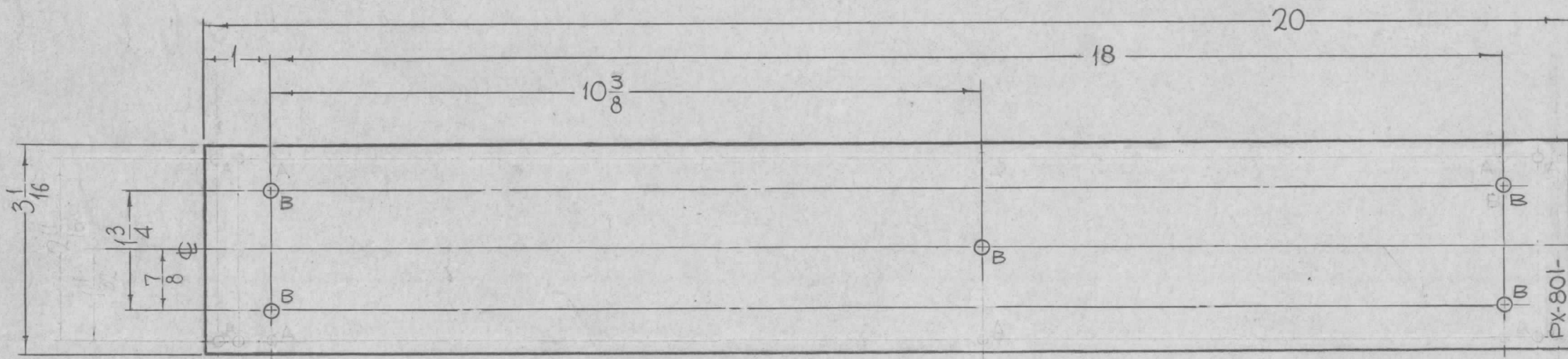
5

5

PX-801 B

REVISIONS

SYM	DESCRIPTION	DATE	E.M.N. NO.	DRAFT	CHKD	APPD
X1	4, 1/16 HOLES DELETED	3-9-64				
0	ORIGINAL RELEASE FOR PRODUCTION	4-24-64		SRG		
A	A HOLES WERE IN SAME DIMENSION AS B HOLES	5-11-64		SRG		
B	6 "A" HOLES DELETED	7-9-64	11778	WB		

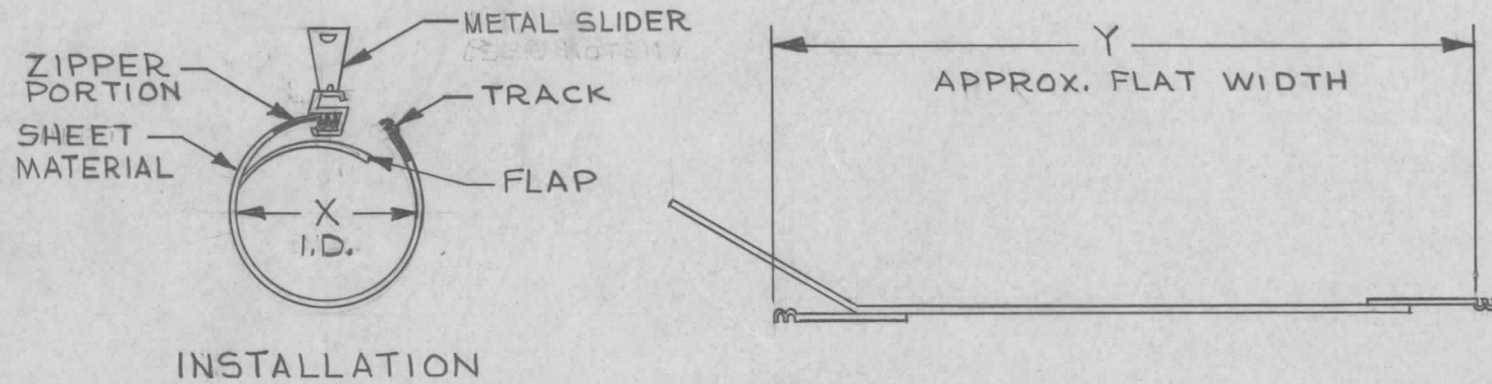


MARK TMC PART NO.  
W/LATEST REV. LETTER  
1/8 HIGH BLACK GOTHIC.

REQ'D.	ITEM	PART NUMBER	DESCRIPTION	SYMBOL
F. BUDETTI LIST OF MATERIAL				
MATERIAL			THE TECHNICAL MATERIEL CORP. MAMARONECK, NEW YORK	
1/16 THICK, XXP, PHENOLIC			BOARD, INSULATOR	
FINISH			TITLE	
NATURAL, S-113-FUNGUS RESISTANT VARNISH			BOARD, INSULATOR	
Q'TY./UNIT		MODEL USED ON	ASS'Y. NO.	
1		GPT-200K	AR-138	
1		GPT-200K	AR-137	
SCALE		CODE		
1/2" = 1"		A		
UNLESS OTHERWISE SPECIFIED DIMENSIONS ARE IN INCHES AND INCLUDE CHEMICALLY APPLIED OR PLATED FINISHES				
DECIMALS		FRACTIONS		
.X ± .05		± 1/64		
.XX ± .01		ANGLES		
.XXX ± .005		± 0° 30'		
DRAWN		DATE	FINAL APPROVAL	
John C Biele		2-28-64	RSC	
CHECKED		DATE		
aa				
ELECT. DES.		DATE	PART NO.	
WB		4/21/64	PX-801	
MECH. DES.		DATE	REV. LTR.	
WB		2/29/64	B	
SHEET				

NOTES

THE CONTENTS OF THIS DRAWING ARE THE EXCLUSIVE PROPERTY OF THE TECHNICAL MATERIEL CORP. ITS UNAUTHORIZED USE OR REPRODUCTION IN WHOLE OR IN PART IS STRICTLY FORBIDDEN.



PX-836

REVISIONS					
SYM	DESCRIPTION	DATE	E.M.N. NO.	DRAFT	CHKD APPD

"X" INSIDE DIA.	"Y" FLAT WIDTH	TMC SIZE CODE
1	3 9/16	1000

COLOR CHART	
CODE	COLOR
1	BLACK

SPECIFICATIONS

MATERIAL	*POLYVINYL CHLORIDE
TRACK THICKNESS (when closed)	.095"
DIELECTRIC STRENGTH, V/MIL	759
TENSILE STRENGTH P.S.I.	3810
ULTIMATE ELONGATION	255%
OPERATING TEMPERATURE, UPPER LIMIT	106°C.
COLD BRITTLENESS	-86°C.
FUNGUS-PROOF	WILL NOT SUPPORT FUNGUS
FLAMMABILITY	SELF-EXTINGUISHING
LATERAL PULL STRENGTH (unsealed)	42.7 POUNDS/INCH
LATERAL PULL STRENGTH (permanently sealed)	59.8 POUNDS/INCH
COLOR	SEE CHART

\* FABRICATED FROM .020" POLYVINYL SHEET MADE FROM MIL-I-631C MATERIALS. ALL PURPOSE TYPE FOR GENERAL APPLICATIONS TO 105°C.

STANDARD SPOOL PUT-UP: 25 FT., 50 FT., 100 FT.

ONE (1) METAL SLIDER AB-295, SUPPLIED BY MFR. PER 25 FEET

TMC PART NUMBER SHALL BE IN THE FOLLOWING FORM:

PX-836 - 1 - 1000  
 BASIC TMC PART NO.      COLOR CODE PER CHART      TMC SIZE CODE PER CHART

REQ'D.	ITEM	PART NUMBER	DESCRIPTION	SYMBOL
--------	------	-------------	-------------	--------

MARTINENGO LIST OF MATERIAL

MATERIAL	SEE SPECS.	THE TECHNICAL MATERIEL CORP. MAMARONECK, NEW YORK
FINISH		TITLE INSULATION SLEEVING, ELECTRICAL ZIPPER TYPE

UNLESS OTHERWISE SPECIFIED DIMENSIONS ARE IN INCHES AND INCLUDE CHEMICALLY APPLIED OR PLATED FINISHES	DRAWN	M TANTILLO	DATE	11-13-63	FINAL APPROVAL	DATE
	CHECKED	<i>[Signature]</i>	DATE	11-27-63		
	ELECT. DES.		DATE		PX-836	REV. LTR.
	MECH. DES.	<i>[Signature]</i>	DATE	11/26/63		

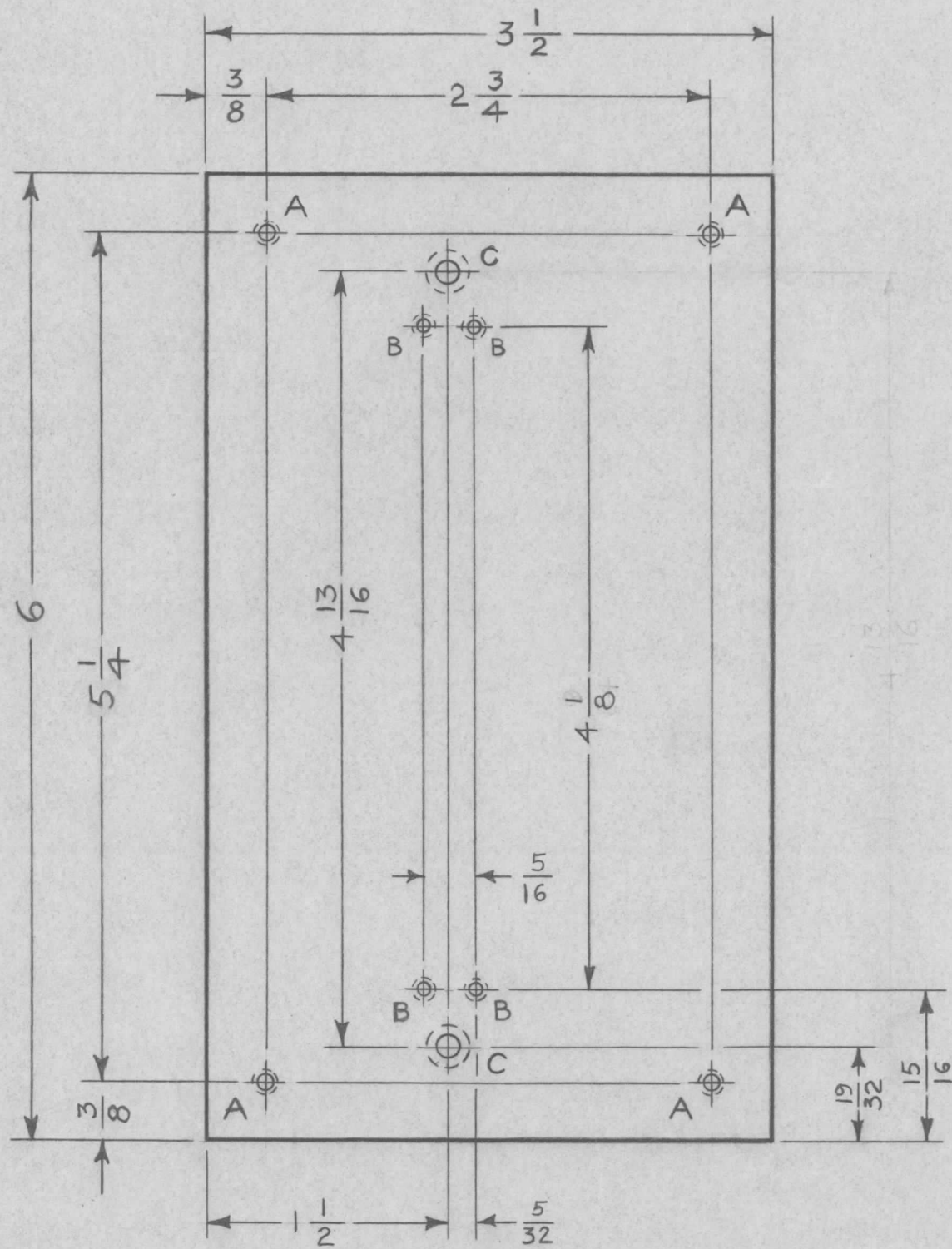
Q'TY./UNIT	MODEL USED ON	ASS'Y. NO.
SCALE NTS	CODE C	S301-63 (ZIP-31)

THE CONTENTS OF THIS DRAWING ARE THE EXCLUSIVE PROPERTY OF THE TECHNICAL MATERIEL CORP. ITS UNAUTHORIZED USE OR REPRODUCTION IN WHOLE OR IN PART IS STRICTLY FORBIDDEN.

NOTES

1. MFR. SUPPLIES 1 METAL SLIDER AB-295 FREE WITH EVERY 25 FT. SPOOL PART NO. PX-836

STANDARD DRAWING



PX 839

REVISIONS

SYM	DESCRIPTION	DATE	E.M.N. NO.	DRAFT	CHKD	APPD
Ø	ORIGINAL RELEASE FOR PRODUCTION	6-10-65	-M	JC		

LEGEND		
HOLE	DESCRIPTION	REQ'D
A	DR #36 (.106) THRU & TAP #6-32	4
B	DR #43 (.089) THRU & TAP #4-40	4
C	DR #27 (.144) THRU & CSINK 82° X .284 DIA	2

REF: LD-1474

REQ'D.	ITEM	PART NUMBER	DESCRIPTION	SYMBOL
I. JOHNSON LIST OF MATERIAL				
MATERIAL 1/4 THICK (XXX-P) PHENOLIC			THE TECHNICAL MATERIEL CORP. MAMARONECK, NEW YORK	
FINISH BLACK S113-FUNGUS PROOF VARNISH			TITLE BLOCK, TERMINAL	
UNLESS OTHERWISE SPECIFIED DIMENSIONS ARE IN INCHES AND INCLUDE CHEMICALLY APPLIED OR PLATED FINISHES		DRAWN <i>K. Peter</i>	DATE 2-25-64	FINAL APPROVAL <i>[Signature]</i>
		CHECKED <i>[Signature]</i>	DATE 6/10/65	DATE 6/14/65
		ELECT. DES. <i>[Signature]</i>	DATE	
		MECH. DES. <i>[Signature]</i>	DATE	
				SHEET
				REV. LTR.

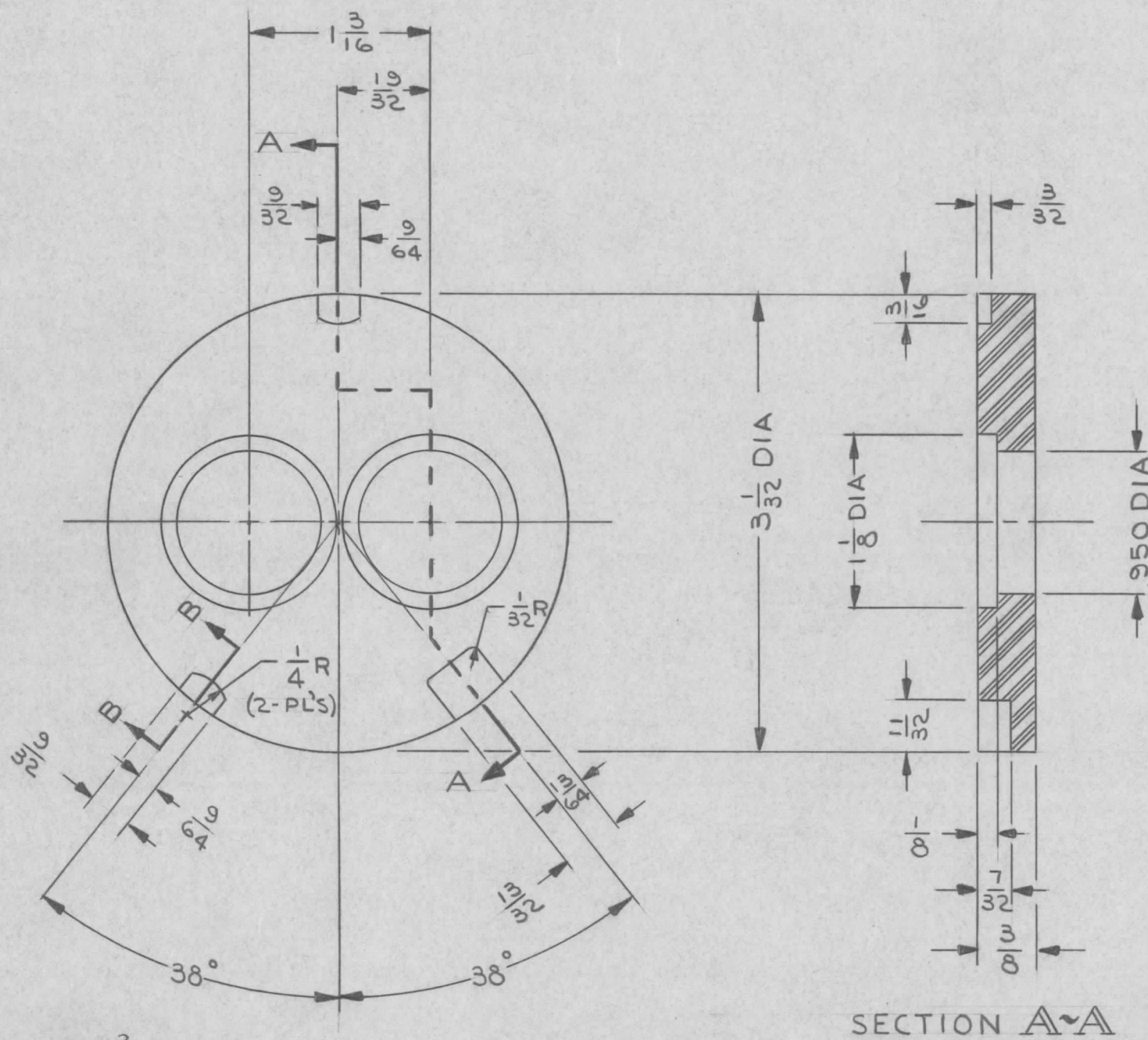
1	RAK-31B	A-3507
Q'TY./UNIT	MODEL USED ON	ASS'Y. NO.
SCALE 1:1	CODE	
THE CONTENTS OF THIS DRAWING ARE THE EXCLUSIVE PROPERTY OF THE TECHNICAL MATERIEL CORP. ITS UNAUTHORIZED USE OR REPRODUCTION IN WHOLE OR IN PART IS STRICTLY FORBIDDEN.		

NOTES

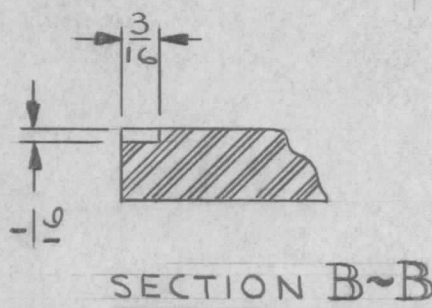
PX 846 0

REVISIONS

SYM	DESCRIPTION	DATE	E.M.N. NO.	DRAFT	CHKD	APPD
X	EXPERIMENTAL RELEASE	5/13/64		JL		
O	ORIGINAL RELEASE FOR PRODUCTION	7.9.64		WB		



SECTION A-A



SECTION B-B

NOTES

1	PAL-1K	
Q'TY./UNIT	MODEL USED ON	ASS'Y. NO.
1:1	A	

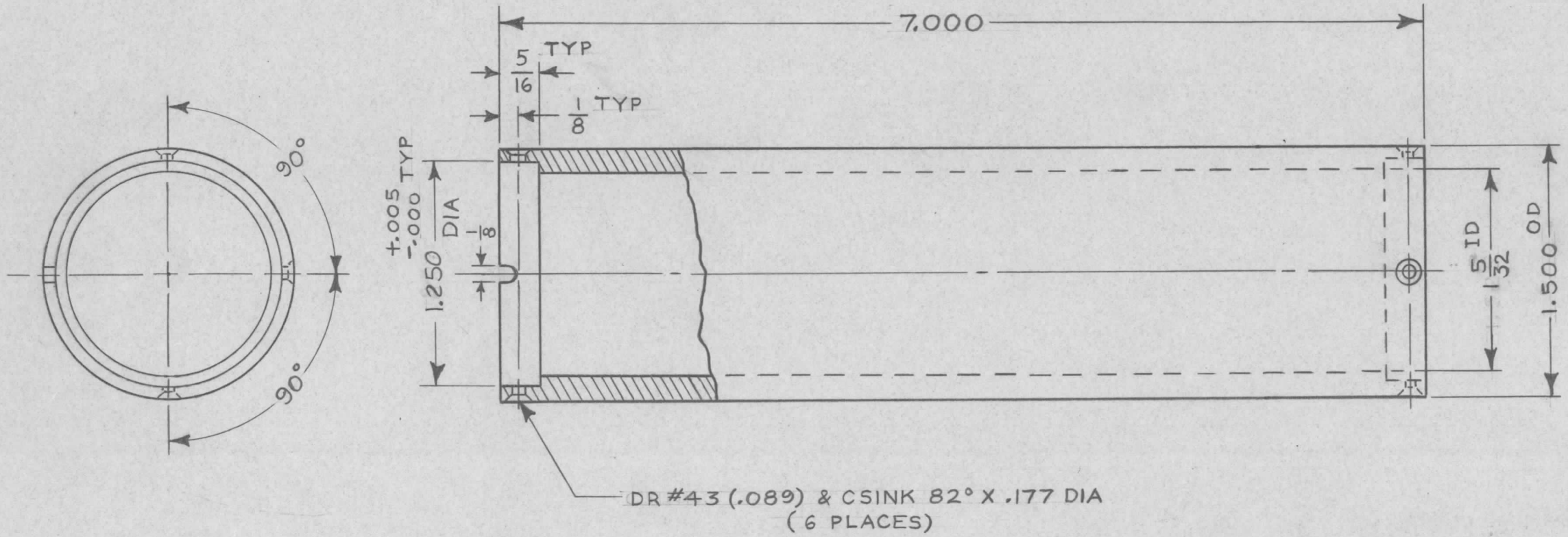
THE CONTENTS OF THIS DRAWING ARE THE EXCLUSIVE PROPERTY OF THE TECHNICAL MATERIEL CORP. ITS UNAUTHORIZED USE OR REPRODUCTION IN WHOLE OR IN PART IS STRICTLY FORBIDDEN.

REQ'D.	ITEM	PART NUMBER	DESCRIPTION	SYMBOL
M. GELLMAN LIST OF MATERIAL				
MATERIAL G-II EPOXY GLASS LAMINATE, 3/8 THK COLOR-GRN			THE TECHNICAL MATERIEL CORP. MAMARONECK, NEW YORK	
FINISH //			TITLE SUPPORT, CORE	
UNLESS OTHERWISE SPECIFIED DIMENSIONS ARE IN INCHES AND INCLUDE CHEMICALLY APPLIED OR PLATED FINISHES		DRAWN J. LESHINSKI	DATE 4/28/64	FINAL APPROVAL RDC
TOLERANCES		DATE 7-8-64	DATE 7-8-64	PX 846 0
DECIMALS .X ± .05 .XX ± .01 .XXX ± .005	FRACTIONS ± 1/64 ANGLES ± 0° 30'	ELECT. DES. MECH. DES.	DATE	SHEET
				REV. LTR.

PX856

REVISIONS

SYM	DESCRIPTION	DATE	E.M.N. NO.	DRAFT	CHKD	APPD
X	EXPERIMENTAL RELEASE	10-22-64		NP		
Ø	ORIGINAL RELEASE FOR PROD	3/15/65	Ø	<i>[Signature]</i>	<i>[Signature]</i>	<i>[Signature]</i>



REF: LD 1637

MATERIAL:  
CAST ACRYLIC HC-206 CLEAR

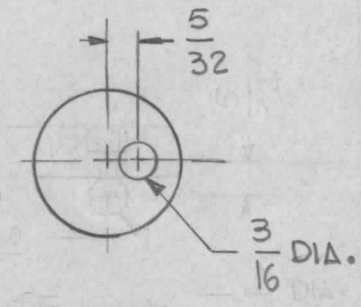
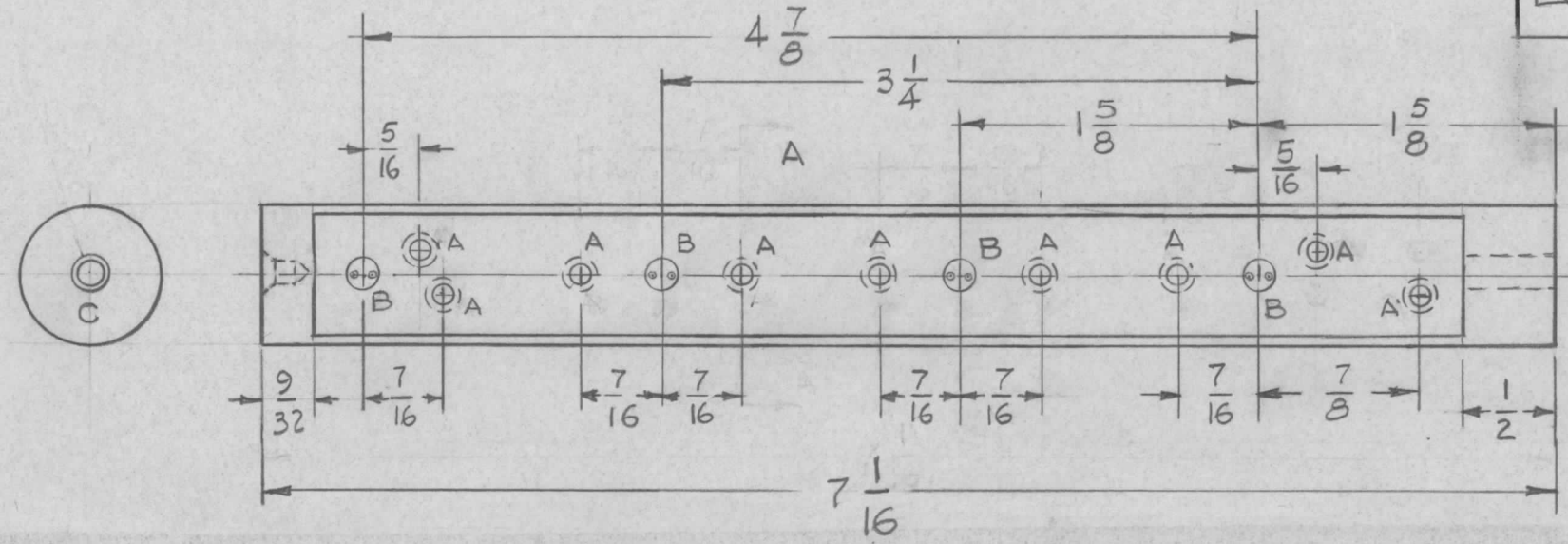
REQ'D.	ITEM	PART NUMBER	DESCRIPTION	SYMBOL
M. GELLMAN LIST OF MATERIAL				
MATERIAL			THE TECHNICAL MATERIEL CORP.	
SEE NOTE			MAMARONECK, NEW YORK	
FINISH			TITLE	
—//—			DRUM, CYLINDER	
UNLESS OTHERWISE SPECIFIED DIMENSIONS ARE IN INCHES AND INCLUDE CHEMICALLY APPLIED OR PLATED FINISHES			DRAWN <i>N. Peter</i>	DATE 10-22-64
			CHECKED <i>[Signature]</i>	DATE
			ELECT. DES. <i>[Signature]</i>	DATE 3-15-65
			MECH. DES. <i>[Signature]</i>	DATE 3-15-65
			PX856	
			SHEET	REV. LTR.

Q'TY./UNIT	MODEL USED ON	ASS'Y. NO.
1	VLRB-1	
SCALE	CODE	
1:1		
THE CONTENTS OF THIS DRAWING ARE THE EXCLUSIVE PROPERTY OF THE TECHNICAL MATERIEL CORP. ITS UNAUTHORIZED USE OR REPRODUCTION IN WHOLE OR IN PART IS STRICTLY FORBIDDEN.		

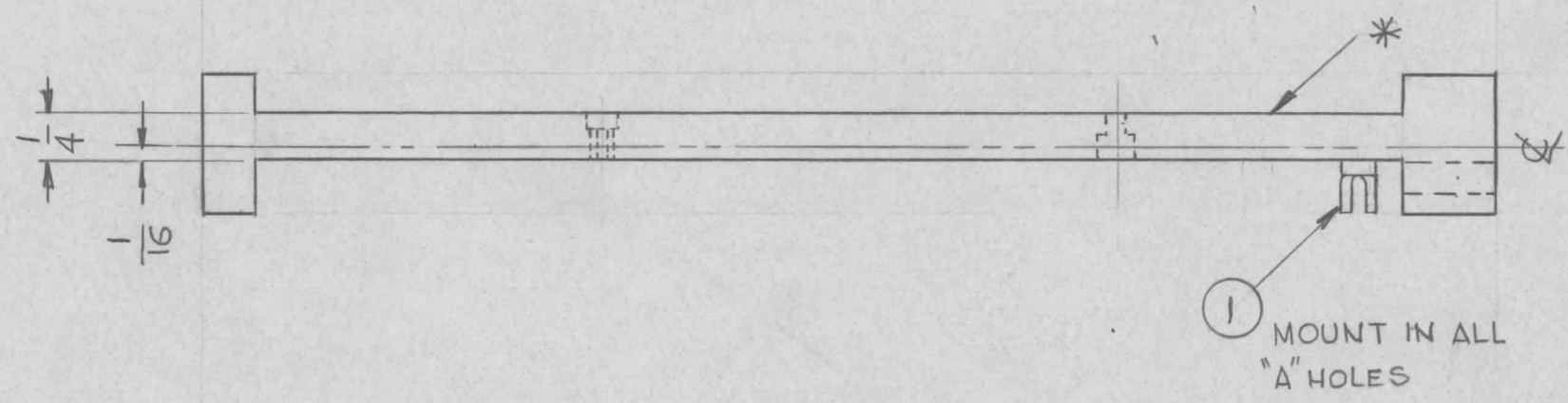
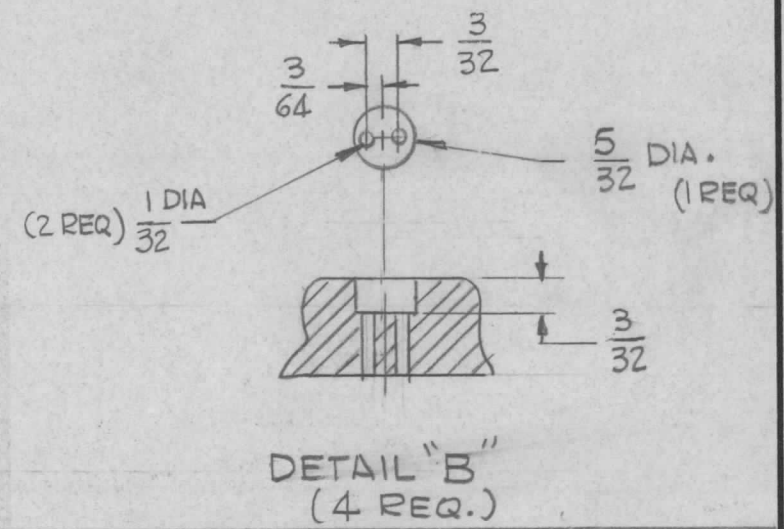
NOTES

PX 857

REVISIONS					
SYM	DESCRIPTION	DATE	E.M.N. NO.	DRAFT	CHKD APPD
X	EXP. RELEASE	11-10-64		G.D.L	
X <sub>1</sub>	ON "C" HOLE (CHART) DIM. 5/32 ADDED	12-23-64		G.D.L	
Ø	ORIGINAL RELEASE FOR PRODUCTION	4.9.65	Ø	JL	



HOLE	DESCRIPTION	REQ
A	.110 DIA. THRU & 3/16 C'BORE x 1/8 DEEP	9
B	SEE DETAIL	4
C	.128 DIA. x 5/32 DEEP & 82° C'SINK TO 3/16 DIA.	1



\* SPRAY THIS SURFACE W/WHITE SEMI-GLOSS ENAMEL PER FED-STD-595, No. 27875 AFTER MOUNTING LUGS

REQ'D.	ITEM	PART NUMBER	DESCRIPTION	SYMBOL
9	1	TE109-1	TERMINAL, STUD	

LIST OF MATERIAL				
MATERIAL	XXXX PHENOLIC ROD LINEN BASE	THE TECHNICAL MATERIEL CORP. MAMARONECK, NEW YORK		
FINISH	NATURAL	LAMP HOLDER, DIAL		
UNLESS OTHERWISE SPECIFIED DIMENSIONS ARE IN INCHES AND INCLUDE CHEMICALLY APPLIED OR PLATED FINISHES		DRAWN	DATE	FINAL APPROVAL
		G.D.L	11-10-64	<i>[Signature]</i>
		CHECKED	DATE	
		ELECT. DES.	DATE	
		MECH. DES.	DATE	
		<i>[Signature]</i>	4-8-65	

Q'TY./UNIT	MODEL USED ON	ASS'Y. NO.
1	VLRB-1	A
SCALE	CODE	
1:1	A	

NOTES

THE CONTENTS OF THIS DRAWING ARE THE EXCLUSIVE PROPERTY OF THE TECHNICAL MATERIEL CORP. ITS UNAUTHORIZED USE OR REPRODUCTION IN WHOLE OR IN PART IS STRICTLY FORBIDDEN.

DECIMALS	TOLERANCES	FRACTIONS
.X ± .05		± 1/64
.XX ± .01		ANGLES
.XXX ± .005		± 0° 30'

DRAWN	DATE	FINAL APPROVAL	DATE
G.D.L	11-10-64	<i>[Signature]</i>	
CHECKED	DATE		
ELECT. DES.	DATE		
MECH. DES.	DATE		
<i>[Signature]</i>	4-8-65		

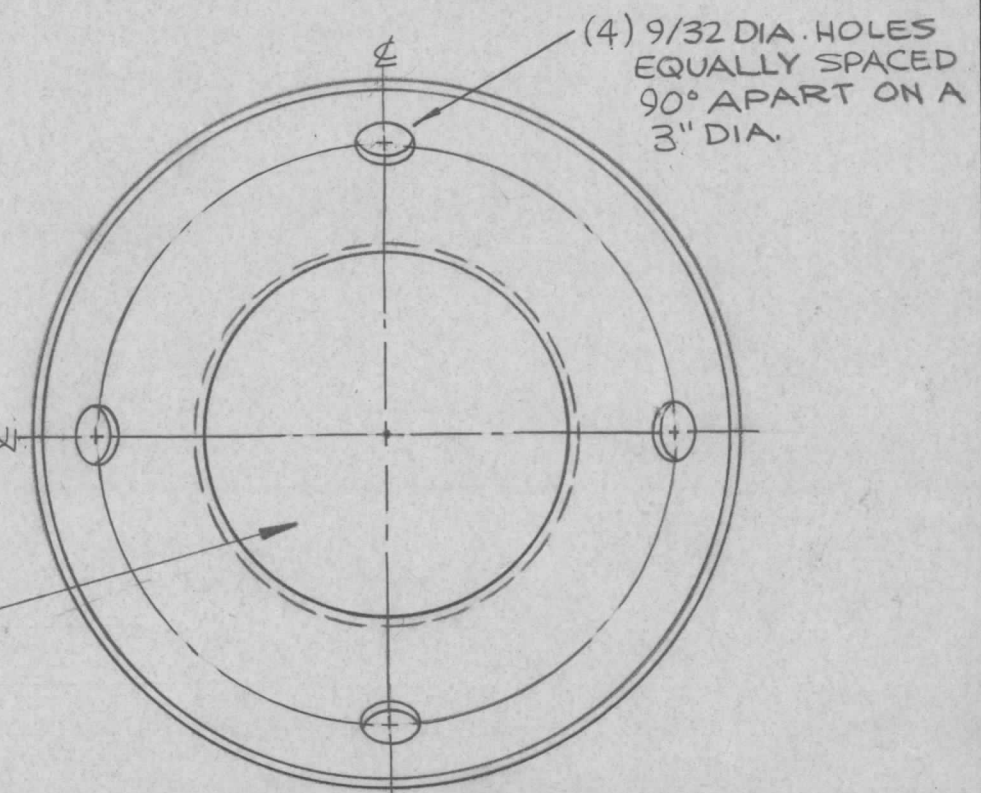
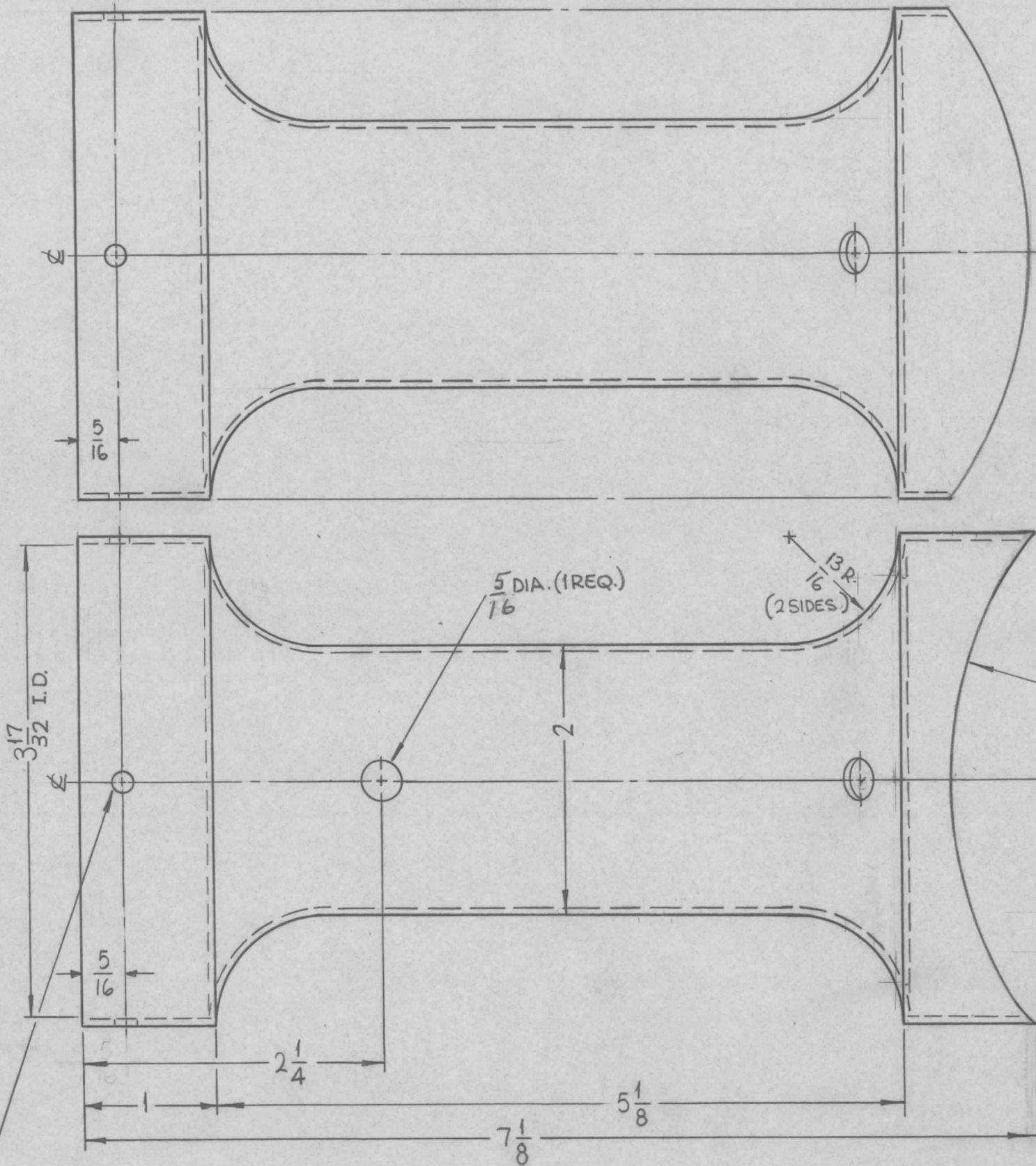
PX 857

REV. LTR.

PX866

REVISIONS

SYM	DESCRIPTION	DATE	E.M.N. NO.	DRAFT	CHKD	APPD
X	EXPERIMENTAL RELEASE	11-12-64	X	SRG		
Ø	ORIGINAL RELEASE FOR PRODUCTION	12-15-64	Ø	RL		



STAMP TMC P/N  
1/8 HIGH GOTHIC

(4) 5/32 DIA. HOLES EQUALLY SPACED 90° APART.

REQ'D.	ITEM	PART NUMBER	DESCRIPTION	SYMBOL
--------	------	-------------	-------------	--------

LIST OF MATERIAL		THE TECHNICAL MATERIEL CORP. MAMARONECK, NEW YORK	
Ø POSE			
MATERIAL	4 LAYERS 83 V.P. 2 PLY FIBERGLASS (3/32 THK, REF. ONLY)	TITLE	
FINISH	S756 GREY SYNTHETIC ENAMEL	SUPPORT, ANTENNA	

Q'TY./UNIT	MODEL USED ON	ASS'Y. NO.
1	LFRA-1	A3988
SCALE	CODE	
1:1	A	

UNLESS OTHERWISE SPECIFIED DIMENSIONS ARE IN INCHES AND INCLUDE CHEMICALLY APPLIED OR PLATED FINISHES		DRAWN		DATE		FINAL APPROVAL		DATE	
DECIMALS	TOLERANCES	SRG	11-12-64	KRL		PX866		Ø	
.X ± .05			12-15-64						
.XX ± .01			12-15-64						
.XXX ± .005		M. Haffner	11-24-64						
FRACTIONS				SHEET		REV. LTR.			
± 1/64									
ANGLES									
± 0° 30'									

NOTES

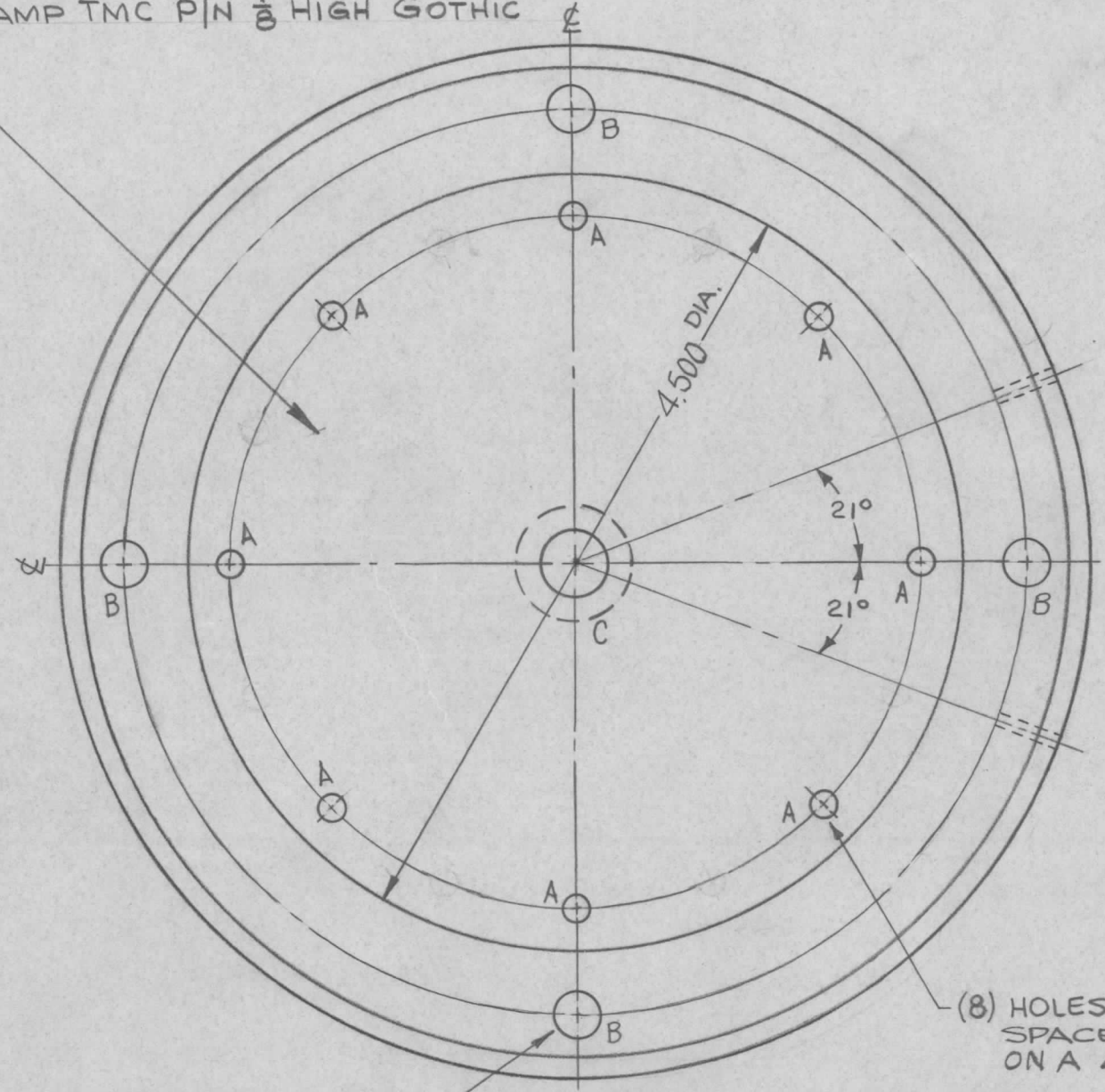
THE CONTENTS OF THIS DRAWING ARE THE EXCLUSIVE PROPERTY OF THE TECHNICAL MATERIEL CORP. ITS UNAUTHORIZED USE OR REPRODUCTION IN WHOLE OR IN PART IS STRICTLY FORBIDDEN.

PX867 A

REVISIONS

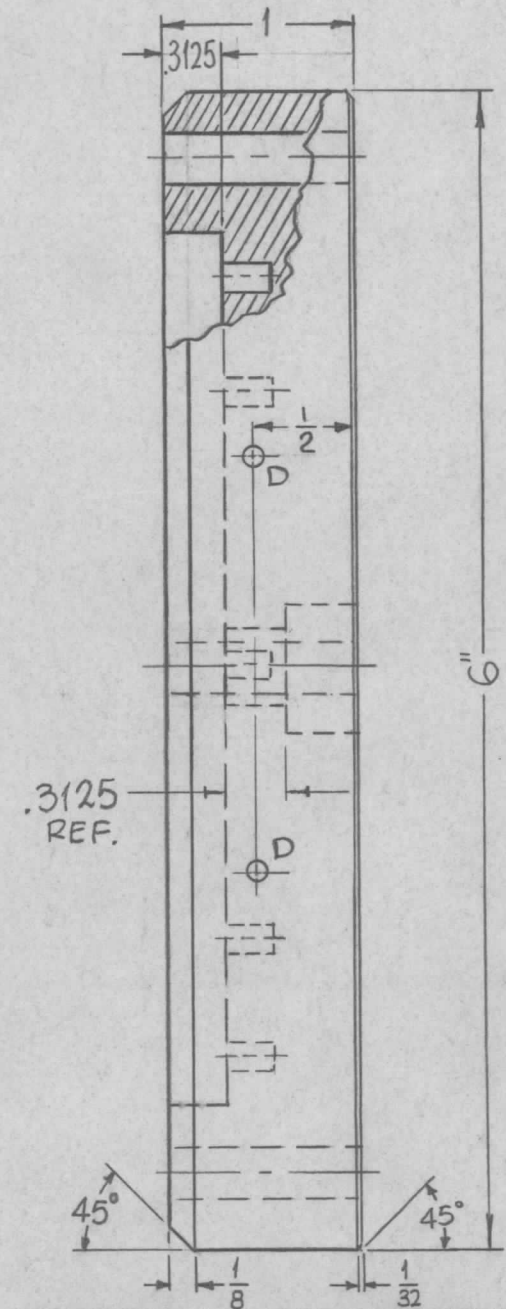
SYM	DESCRIPTION	DATE	E.M.N. NO.	DRAFT	CHKD	APPD
X	EXPERIMENTAL RELEASE	11-12-64	X	SRG		
Ø	ORIGINAL RELEASE FOR PRODUCTION	12-15-64	Ø	RF		
A	"C" DETAIL REVISED; ON PICT: ON "A" HOLE CALLOUT 45° WAS 22.5°,	2-3-65	13389	RF	gcb	gcb

STAMP TMC P/N  $\frac{1}{8}$  HIGH GOTHIC

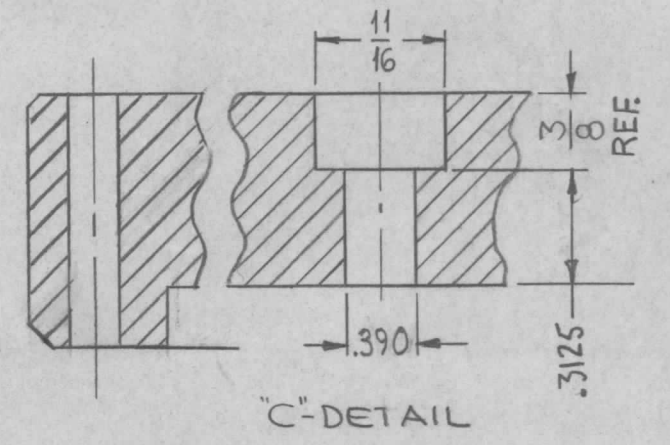


(4) HOLES EQUALLY SPACED 90° APART ON A 5.250 DIA.

(8) HOLES EQUALLY SPACED 45° APART ON A 4.000 DIA.



HOLE	DESCRIPTION	REQ.
A	.157 DIA. x 1/4 DEEP.	16
B	17/64 DIA.	4
C	SEE DETAIL.	1
D	DRILL & TAP FOR 3-48 x 3/8 DP.	2



REQ'D.	ITEM	PART NUMBER	DESCRIPTION	SYMBOL
Ø	POSE		LIST OF MATERIAL	
MATERIAL		THE TECHNICAL MATERIEL CORP. MAMARONECK, NEW YORK		
FINISH		TITLE BASE, ANTENNA		
UNLESS OTHERWISE SPECIFIED DIMENSIONS ARE IN INCHES AND INCLUDE CHEMICALLY APPLIED OR PLATED FINISHES		DRAWN	DATE	FINAL APPROVAL
DECIMALS .X ± .05 .XX ± .01 .XXX ± .005		SRG	11-12-64	RF
FRACTIONS ± 1/64 ANGLES ± 0° 30'		CHECKED	DATE	
TOLERANCES		@	12-15-64	
		ELECT. DES.	DATE	
		M. Jeffrey	11-24-64	
		MECH. DES.	DATE	
SHEET				REV. LTR.
PX867				A

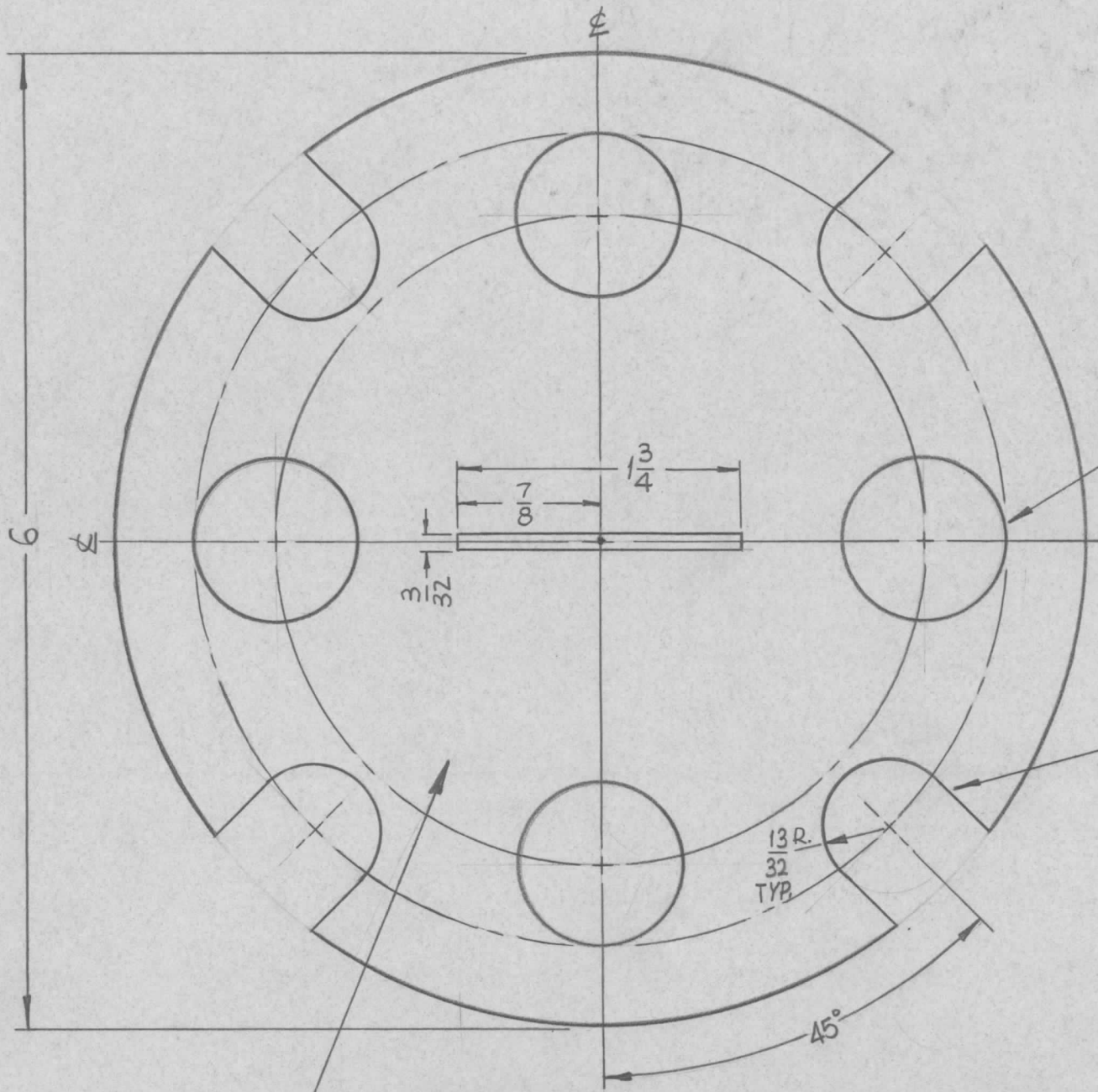
1	LFRA -1	A3988
Q'TY./UNIT	MODEL USED ON	ASS'Y. NO.
SCALE	CODE	
1:1	A	
THE CONTENTS OF THIS DRAWING ARE THE EXCLUSIVE PROPERTY OF THE TECHNICAL MATERIEL CORP. ITS UNAUTHORIZED USE OR REPRODUCTION IN WHOLE OR IN PART IS STRICTLY FORBIDDEN.		

NOTES



PX868

REVISIONS					
SYM	DESCRIPTION	DATE	E.M.N. NO.	DRAFT	CHKD APPD
X	EXPERIMENTAL RELEASE	11-12-64	X	SRG	
Ø	ORIGINAL RELEASE FOR PRODUCTION	12-15-64	Ø	JL	



(4) 1" DIA. HOLES EQUALLY SPACED 90° APART ON A 4" DIA.

(4) SLOTS EQUALLY SPACED 90° APART ON A 5" DIA.

STAMP TMC P/N  $\frac{1}{8}$  HIGH GOTHIC

REQ'D.	ITEM	PART NUMBER	DESCRIPTION	SYMBOL
Ø	POSE		LIST OF MATERIAL	
MATERIAL 4 LAYERS 83 V.P. 2 PLY FIBERGLASS (3/32 THK. REF. ONLY)			THE TECHNICAL MATERIEL CORP. MAMARONECK, NEW YORK	
FINISH 5756 GREY SYNTHETIC ENAMEL			TITLE PLATE, COIL SUPPORT	
UNLESS OTHERWISE SPECIFIED DIMENSIONS ARE IN INCHES AND INCLUDE CHEMICALLY APPLIED OR PLATED FINISHES			DRAWN SRG	DATE 11-12-64
			CHECKED	DATE 12-15-64
			ELECT. DES.	DATE 12-15-64
			MECH. DES. M. Gaffney	DATE 12-15-64
			SHEET	REV. LTR.

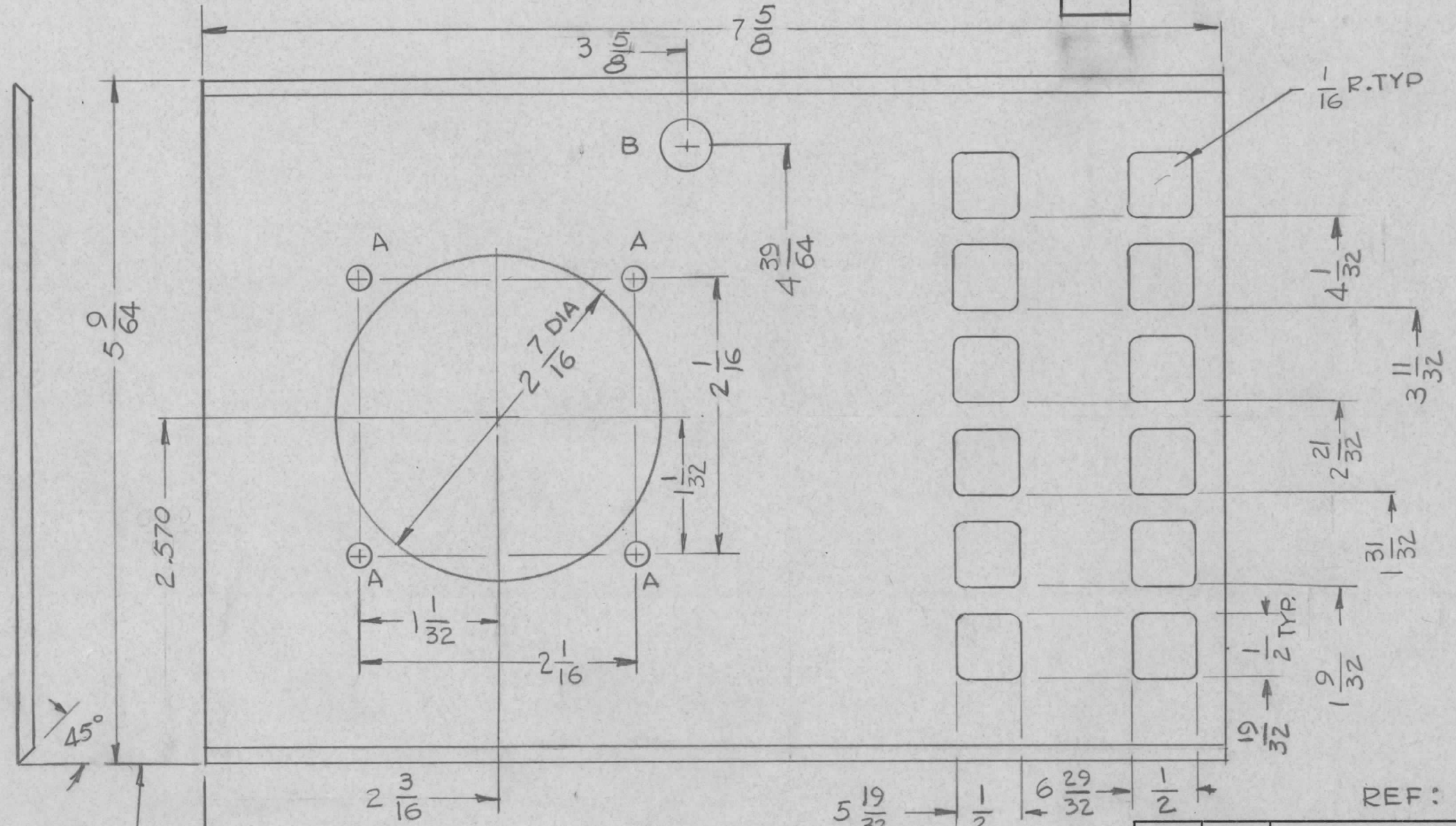
2	LFRA-1	A3988
Q'TY./UNIT	MODEL USED ON	ASS'Y. NO.
SCALE 1:1	CODE A	
THE CONTENTS OF THIS DRAWING ARE THE EXCLUSIVE PROPERTY OF THE TECHNICAL MATERIEL CORP. ITS UNAUTHORIZED USE OR REPRODUCTION IN WHOLE OR IN PART IS STRICTLY FORBIDDEN.		

NOTES

PX870 Ø

REVISIONS

SYM	DESCRIPTION	DATE	E.M.N. NO.	DRAFT	CHKD	APPD
X	EXPER. RELEASE	12-14-64		G.D.L.		
Ø	ORIGINAL RELEASE FOR PRODUCTION	1-28-65	Ø	Ø		



HOLE	DESCRIPTION	REQ
A	11/64 DIA	4
B	3/8 DIA	1

LOCATING  
BASE LINES

REF: LD 1665

REQ'D.	ITEM	PART NUMBER	DESCRIPTION	SYMBOL
--------	------	-------------	-------------	--------

0-POSE LIST OF MATERIAL

MATERIAL 3/32 THK VINYL WHITE THE TECHNICAL MATERIEL CORP.  
MAMARONECK, NEW YORK

FINISH # TITLE PANEL, FRONT

1	TPC-II	
Q'TY./UNIT	MODEL USED ON	ASS'Y. NO.
SCALE 1:1	CODE A	

UNLESS OTHERWISE SPECIFIED DIMENSIONS ARE IN INCHES AND INCLUDE CHEMICALLY APPLIED OR PLATED FINISHES	DRAWN G.D.L.	DATE 12-14-64	FINAL APPROVAL	DATE
	CHECKED	DATE 12-23-64		
	ELECT. DES.	DATE		

MECH. DES.	DATE 1-28-65	SHEET	REV. LTR.
------------	--------------	-------	-----------

NOTES

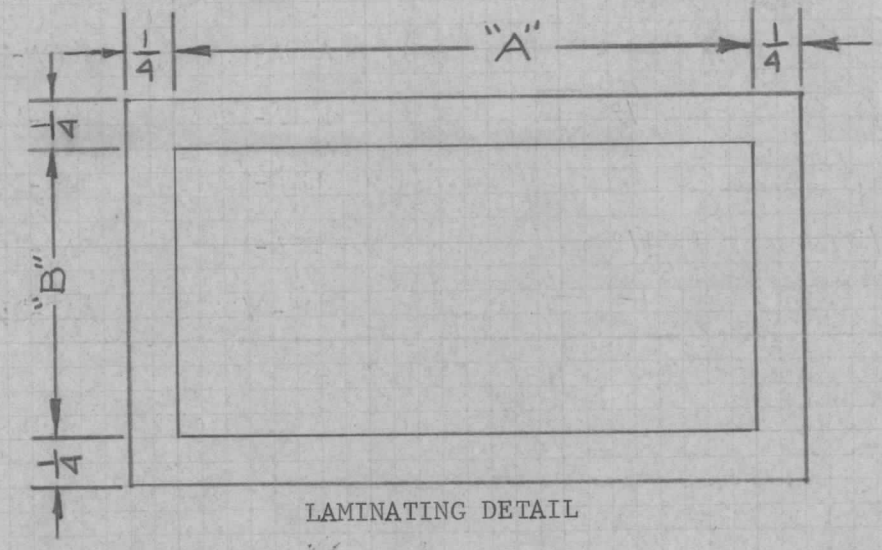
THE CONTENTS OF THIS DRAWING ARE THE EXCLUSIVE PROPERTY OF THE TECHNICAL MATERIEL CORP. ITS UNAUTHORIZED USE OR REPRODUCTION IN WHOLE OR IN PART IS STRICTLY FORBIDDEN.

DECIMALS	FRACTIONS
.X ± .05	± 1/64
.XX ± .01	ANGLES
.XXX ± .005	± 0° 30'

TOLERANCES

TMC PART NO.	USE DIAGRAM NUMBER	"A" LENGTH	"B" WIDTH	MATERIAL THICKNESS	MODEL NO.	CABINET NO.
PX871-1	CK797	19 1/2	10 1/2	.015	MSG A-1A	RAK102-3
PX871-2	CK788	19 1/2	10 1/2	.015	LRRB-1	RAK-73
PX871-3	CK765	19 1/2	10 1/2	.015	VLFC-1	RAK-43
PX871-4	CK789	27 5/16	10 1/2	.015	DDRR-5C	RAK-102-2
PX871-5	CK739	19 1/2	10 1/2	.015	DDR-8/3203	RAK-31C
PX871-6	CK823				ARCA-1	COPA-2
PX871-7	CK786	19 1/2	10 1/2	.015	LRR A-1	RAK-44
PX871-8	CK831				MCTR-350	RAK-106
PX871-9	CK722	19 1/2	10 1/2	.015	MSG A-1	RAK-35A
PX871-10	CK738				DDR-8/3213	RAK-31A
PX871-11	CK8799	20-1/2	13-1/8	.015	SBG-1X	RAK-20B
PX871-12	CK781	19-1/2	10-1/2	.015	DDR-551	RAK-51
PX871-13	CK980		10 1/2	.015	DDRR-5B1	RAK-102-5
PX871-14	CK994		10 1/2	.015	ARCD-1	RAK-21C
PX871-15	CK995		10 1/2	.015	DDRR-5M	RAK-22B
PX871-16	CK996		10 1/2	.015	DDR-5M	RAK-22C
PX871-17	CK718		10 1/2	.015	DDR-6F	
PX871-18	CK720		10 1/2	.015	DDR-8/3023	RAK-31B
PX871-19	CK724		10 1/2	.015	DDR-5H	
PX871-20	CK726		10 1/2	.015	DDR-7C	
PX871-21	CK736		10 1/2	.015	DDR-7D	
PX871-22	CK989		10 1/2	.015	DDR-5L	RAK-55
PX871-23	CK1007		10 1/2	.015	DDR-5K	RAK-96-2
PX871-24	CK1010		10 1/2	.015	DDR-5BR	RAK-102-4
PX871-25	CK1012		10 1/2	.015	DDRR506	
PX871-26	CK1111		10 1/2	.015	DDRR-5B3	RAK-102-2
PX871-27	CK1134		10 1/2	.015	DDR-6N	
PX871-28	CK1167	23-1/2	13-1/8	.015	SBTIKSA	
PX871-29	CK1188		10-1/2	.015	GPT-1KC	

REVISIONS					
SYM	DESCRIPTION	DATE	E.M.N. NO.	DRAFT	CHKD APPD
L	SEE SHEET 2	8/21/67	18430	C.V.	FB
A					
B					
C					
D					
E					
F					
G					
H					
I					
J					
K					



STANDARD DWG

NOTES

THE CONTENTS OF THIS DRAWING ARE THE EXCLUSIVE PROPERTY OF THE TECHNICAL MATERIEL CORP. ITS UNAUTHORIZED USE OR REPRODUCTION IN WHOLE OR IN PART IS STRICTLY FORBIDDEN.

REQ'D.	ITEM	PART NUMBER	DESCRIPTION	SYMBOL
LIST OF MATERIAL				
MATERIAL		THE TECHNICAL MATERIEL CORP. MAMARONECK, NEW YORK		
FINISH		TITLE WIRING DIAGRAM, LAMINATED		
UNLESS OTHERWISE SPECIFIED DIMENSIONS ARE IN INCHES AND INCLUDE CHEMICALLY APPLIED OR PLATED FINISHES		DRAWN T. MEEHAN	DATE 11/24/64	FINAL APPROVAL DATE
DECIMALS .X ± .05 .XX ± .01 .XXX ± .005		CHECKED L. Sobel	DATE 12-2-64	PX871
FRACTIONS ± 1/64 ANGLES ± 0° 30'		ELECT. DES.	DATE	
TOLERANCES		MECH. DES.	DATE 12/1/64	REV. LTR.
				SHEET 1 OF 2

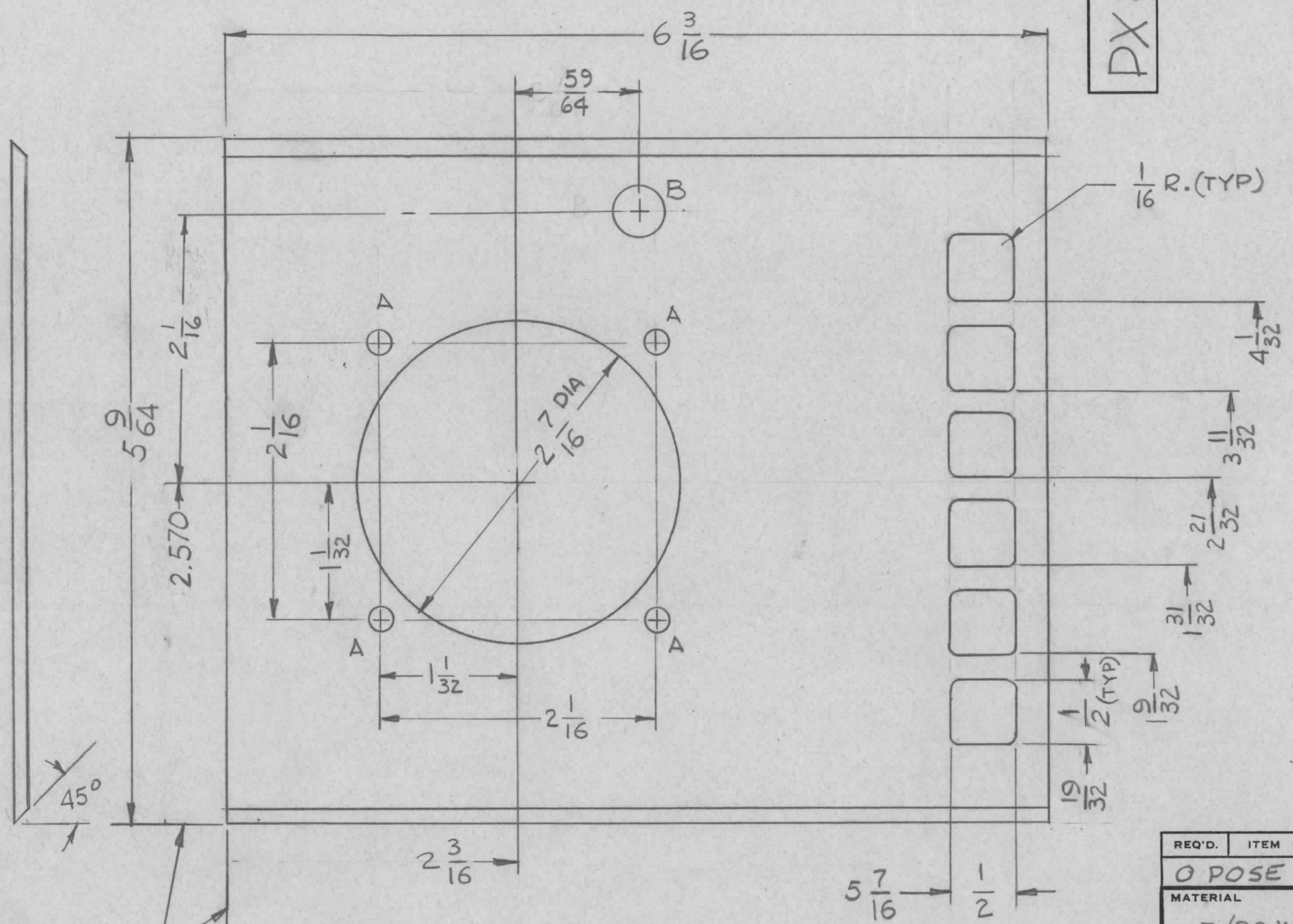
TMC P/N	USE DIAGRAM NUMBER	"A" LENGTH	"B" WIDTH	MATERIAL THICKNESS	MODEL NO	CABINET NO
PX871-30	CK477	23-1/2	13-1/8	.015	SBT1KQ2	RAK-9Q1
PX877-31	CK1264	—	13-1/8	.015	SBT1KSX2	—
PX871-32	CK1336	23-1/2	13-1/8	.015	SBT350WAX-1	RAK-19K
PX871-33	CK1382	—	10-1/2	.015	GPT-1KC1	
PX871-34	CK1381	23-1/2	13-1/8	.015	SBT-1KF5	
PX871-35	CK1379	—	13-1/8	.015	SBT-1KF5	
PX871-36						
PX871-37	CK1389	—	10-1/2	.015	DDR-5KS2	
PX871-38	CK1390	—	10-1/2	.015	DDR-5KS1	

REVISIONS						
ZONE	LTR	DESCRIPTION	DATE	E.M.N.NO	DRAFT	CHKD APPD
	K	ADDED PX781-31 AND 32	4-12-67	18103	LAK	<i>[Signature]</i> <i>[Signature]</i>
	L	ADDED PX871-33,34,35,37,38	8-21-67	18430	C.V.	<i>[Signature]</i> FB

REQ'D	ITEM	PART NUMBER	DESCRIPTION	SYM.
LIST OF MATERIAL				
<b>THE TECHNICAL MATERIEL CORP.</b> MAMARONECK, NEW YORK				
<i>WIRING DIAGRAM, LAMINATED</i>				
UNLESS OTHERWISE SPECIFIED DIMENSIONS ARE IN INCHES AND INCLUDE CHEMICALLY APPLIED OR PLATED FINISHES		FINAL APPROVAL <i>RDC</i>	DATE	
DECIMALS .X ± .05 .XX ± .01 .XXX ± .005		FRACTIONS 1/64 ANGLES 0° -30'	MECH. DES.	DATE
QTY / UNIT		MODEL USED ON	ELECT. DES.	DATE
ASS'Y NO.		CODE A	DRAWN <i>L. KOLIBABEK</i>	DATE 4-12-67
APPLICATION		MATERIAL VINYL PLASTIC	SIZE B	CODE IDENT. NO. 82679
NOTICE TO PERSONS RECEIVING THIS DRAWING <b>THE TECHNICAL MATERIEL CORPORATION</b> claims proprietary right in the material disclosed hereon. This drawing is issued in confidence for engineering information only and may not be reproduced or used to manufacture anything shown hereon without permission from <b>THE TECHNICAL MATERIEL CORPORATION</b> to the user. This drawing is loaned for mutual assistance and is subject to recall at any time.		FINISH	DWG NO. PX871	ISSUE L
			SCALE	SHEET 2 OF 2

PX 878

REVISIONS						
SYM	DESCRIPTION	DATE	E.M.N. NO.	DRAFT	CHKD	APPD
X	EXPER. RELEASE	12-18-64		G.D.L		
Ø	ORIGINAL RELEASE FOR PRODUCTION	12-28-64	Ø	R.L.		



HOLE	DESCRIPTION	REQ
A	11/64 DIA.	4
B	3/8 DIA.	1

LOCATING  
BASE LINES

REF: LD 1664

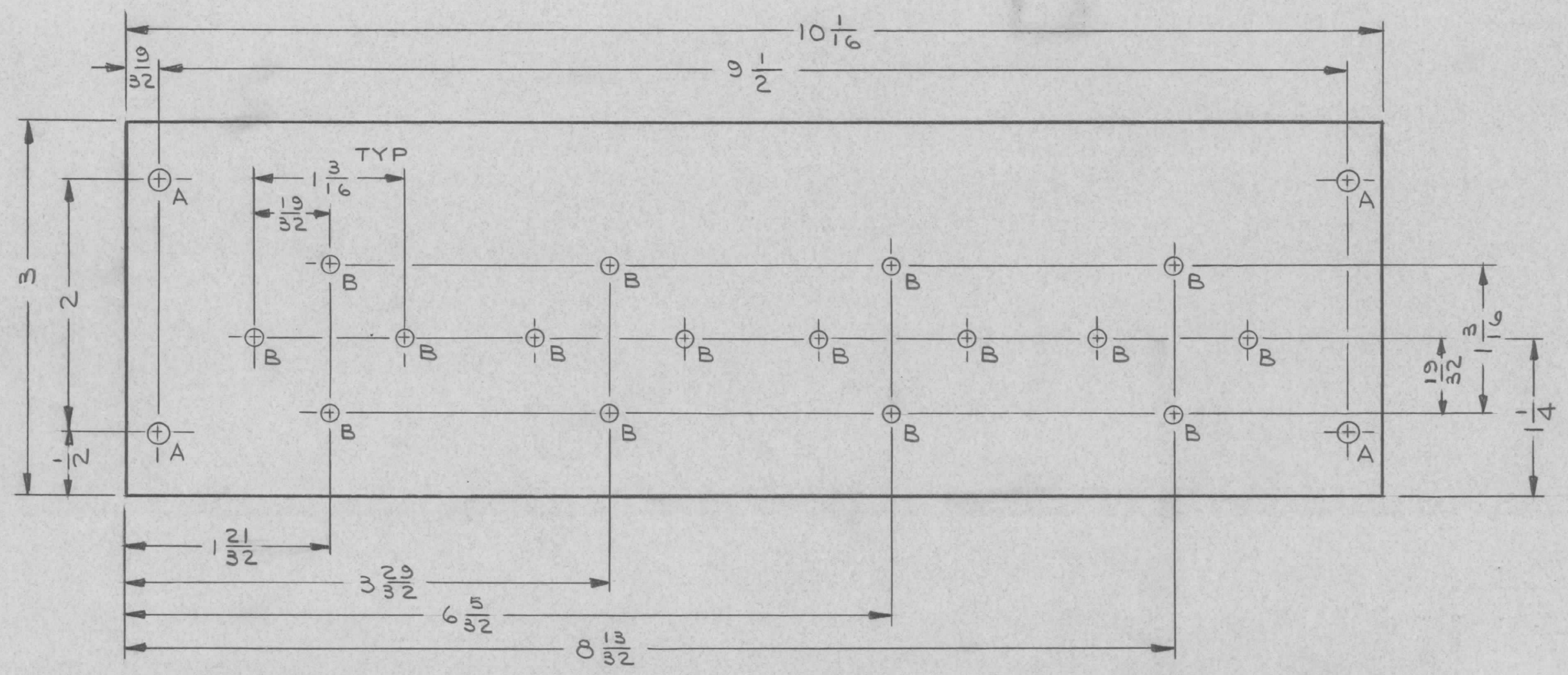
REQ'D.	ITEM	PART NUMBER	DESCRIPTION	SYMBOL
Ø POSE LIST OF MATERIAL				
MATERIAL		THE TECHNICAL MATERIEL CORP. MAMARONECK, NEW YORK		
FINISH		TITLE PLATE, FRONT		
UNLESS OTHERWISE SPECIFIED DIMENSIONS ARE IN INCHES AND INCLUDE CHEMICALLY APPLIED OR PLATED FINISHES		DRAWN G.D.L	DATE 12-18-64	FINAL APPROVAL
		CHECKED @	DATE 12-23-64	
		ELECT. DES. G.D.L	DATE 12-23-64	PX 878
		MECH. DES.	DATE	
DECIMALS .X ± .05 .XX ± .01 .XXX ± .005		TOLERANCES	FRACTIONS ± 1/64 ANGLES ± 0° 30'	Ø
SHEET				REV. LTR.

1	SMC-1, TPC-1	
Q'TY./UNIT	MODEL USED ON	ASS'Y. NO.
SCALE 1:1	CODE	
THE CONTENTS OF THIS DRAWING ARE THE EXCLUSIVE PROPERTY OF THE TECHNICAL MATERIEL CORP. ITS UNAUTHORIZED USE OR REPRODUCTION IN WHOLE OR IN PART IS STRICTLY FORBIDDEN.		

NOTES

REVISIONS

SYM	DESCRIPTION	DATE	E.M.N. NO.	DRAFT	CHKD	APPD
X	EXP. RELEASE	2/4/65		JL		
Ø	ORIGINAL RELEASE FOR PRODUCTION	12/21/65	Ø			JL



REF.: LD 1698

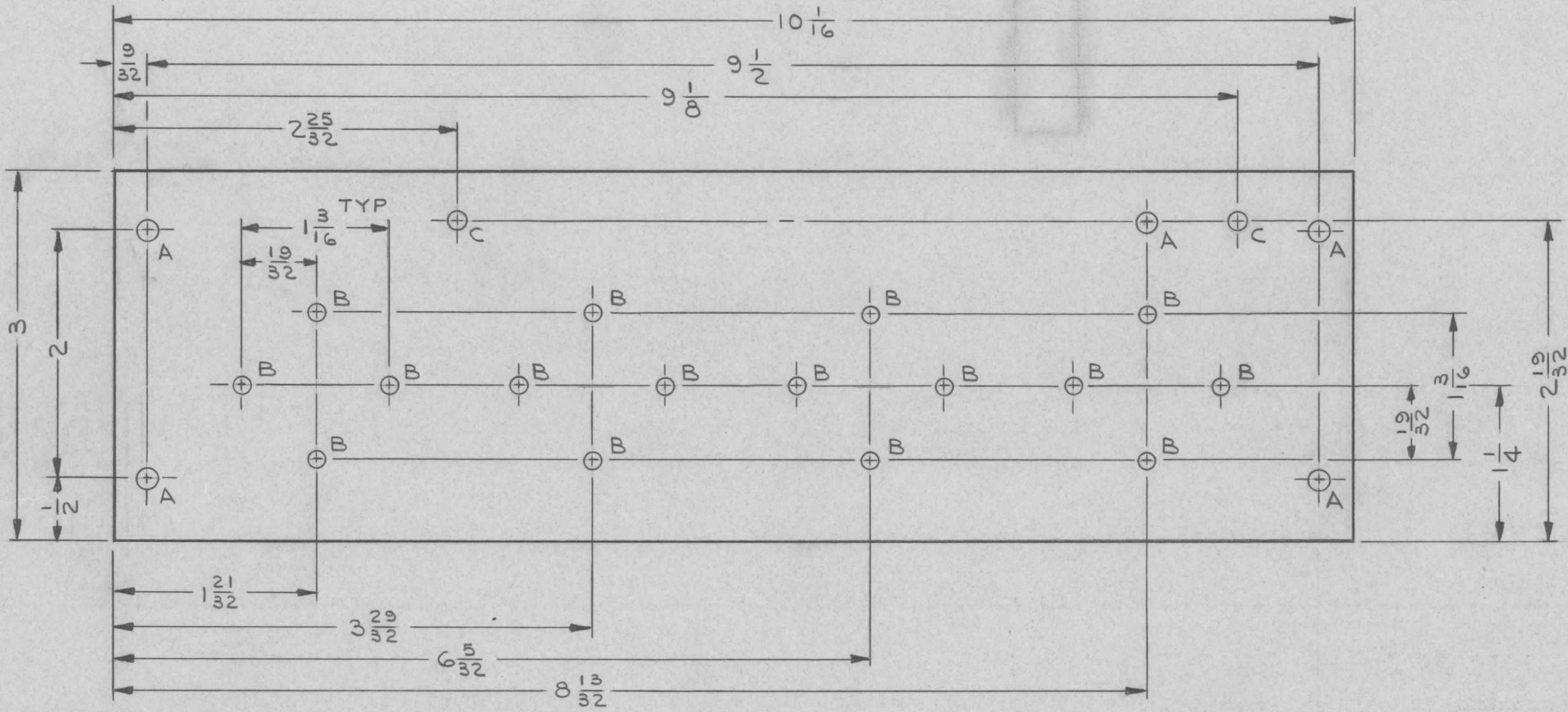
HOLE LEGEND		
HOLE	DESCRIPTION	REQ'D
A	3/16 DIA	4
B	5/32 DIA	16

REQ'D.	ITEM	PART NUMBER	DESCRIPTION	SYMBOL		
LIST OF MATERIAL						
MATERIAL			THE TECHNICAL MATERIEL CORP. MAMARONECK, NEW YORK			
1/8 THK PHENOLIC XXXP						
FINISH			TITLE			
NATURAL			ZENER BOARD - BOTTOM			
UNLESS OTHERWISE SPECIFIED DIMENSIONS ARE IN INCHES AND INCLUDE CHEMICALLY APPLIED OR PLATED FINISHES			DRAWN	DATE	FINAL APPROVAL	DATE
			JL	6-24-65	<i>[Signature]</i>	12/21/65
DECIMALS .X ± .05 .XX ± .01 .XXX ± .005			CHECKED	DATE	PX 887	Ø
			JLB	6-24-65		
FRACTIONS ± 1/64 ANGLES ± 0° 30'			ELECT. DES.	DATE	SHEET	REV. LTR.
			MECH. DES.	DATE		
TOLERANCES			M/L <i>[Signature]</i>	12/22/65		

1	GPT-10KLF	
Q'TY./UNIT	MODEL USED ON	ASS'Y. NO.
SCALE	CODE	
1:1		
THE CONTENTS OF THIS DRAWING ARE THE EXCLUSIVE PROPERTY OF THE TECHNICAL MATERIEL CORP. ITS UNAUTHORIZED USE OR REPRODUCTION IN WHOLE OR IN PART IS STRICTLY FORBIDDEN.		

NOTES

REVISIONS						
SYM	DESCRIPTION	DATE	E.M.N. NO.	DRAFT	CHKD	APPD
X	EXP. RELEASE	2/4/65		JL		
Ø	ORIGINAL RELEASE FOR PRODUCTION	12/21/65	Ø			



HOLE LEGEND		
HOLE	DESCRIPTION	REQ'D
A	3/16 DIA	5
B	5/32 DIA	16
C	1/64 DIA	2

REF. : LD1699

REQ'D.	ITEM	PART NUMBER	DESCRIPTION	SYMBOL
<b>LIST OF MATERIAL</b>				
MATERIAL		THE TECHNICAL MATERIEL CORP.		
1/8 THK PHENOLIC		MAMARONECK, NEW YORK		
XXXP		TITLE		
FINISH		ZENER BOARD - TOP		
NATURAL		DRAWN		
UNLESS OTHERWISE SPECIFIED		J. LESHINSKI		DATE
DIMENSIONS ARE IN INCHES AND INCLUDE		2/4/65		FINAL APPROVAL
CHEMICALLY APPLIED OR PLATED FINISHES		CHECKED		DATE
DECIMALS		ELECT. DES.		DATE
.X ± .05		MECH. DES.		DATE
.XX ± .01		SHEET		REV. LTR.
.XXX ± .005		M/L		12/20/65
TOLERANCES		PX 888		
FRACTIONS				
± 1/64				
ANGLES				
± 0° 30'				

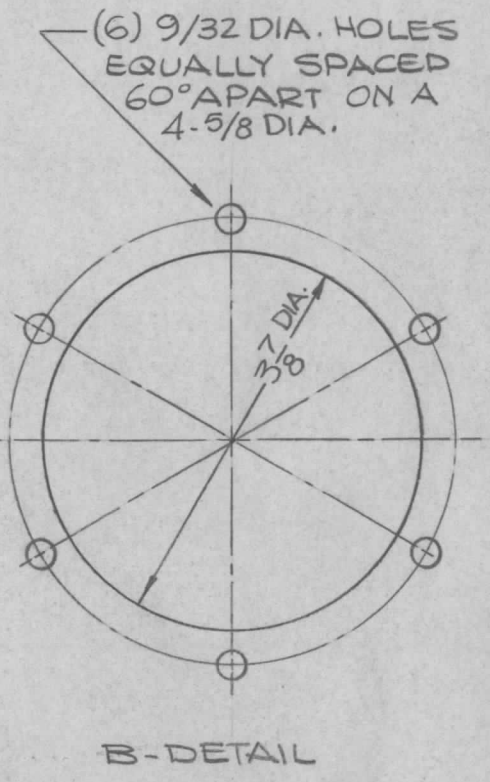
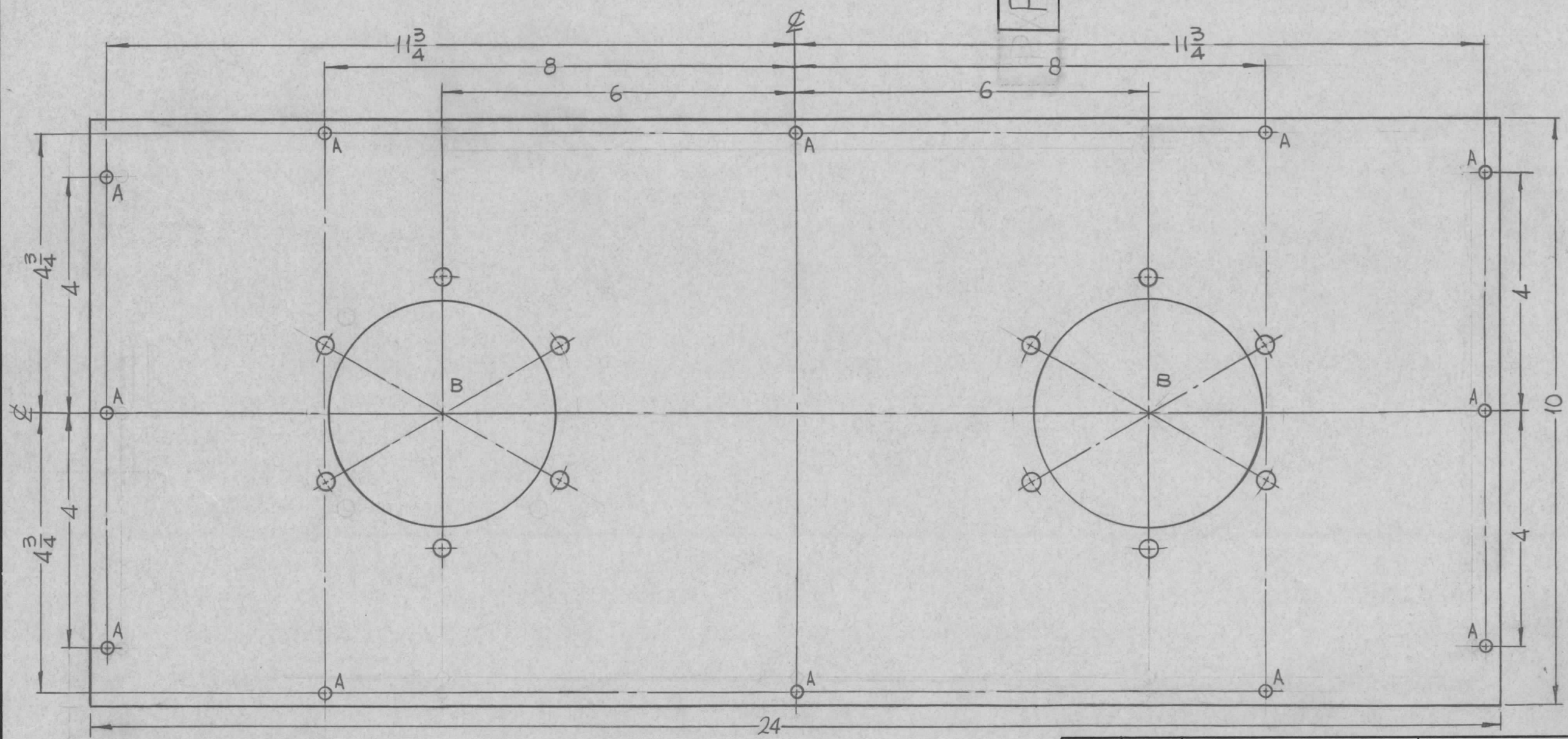
GPT-10KLF		
Q'TY./UNIT	MODEL USED ON	ASS'Y. NO.
SCALE	CODE	
1:1		
THE CONTENTS OF THIS DRAWING ARE THE EXCLUSIVE PROPERTY OF THE TECHNICAL MATERIEL CORP. ITS UNAUTHORIZED USE OR REPRODUCTION IN WHOLE OR IN PART IS STRICTLY FORBIDDEN.		

NOTES

PX 890

REVISIONS

SYM	DESCRIPTION	DATE	E.M.N. NO.	DRAFT	CHKD	APPD
Ø	ORIGINAL RELEASE FOR PRODUCTION	12-22-64	X	SRG		



HOLES	DESCRIPTION	REQ.
A	15/64 DIA	12
B	SEE DETAIL	2

REQ'D.	ITEM	PART NUMBER	DESCRIPTION	SYMBOL
BUDETTI LIST OF MATERIAL				
MATERIAL			THE TECHNICAL MATERIEL CORP.	
1/4 THICK G-7 SILICONE GLASS			MAMARONECK, NEW YORK	
FINISH			TITLE	
NATURAL			BOARD, MTG, INSULATOR	
UNLESS OTHERWISE SPECIFIED DIMENSIONS ARE IN INCHES AND INCLUDE CHEMICALLY APPLIED OR PLATED FINISHES			DRAWN	DATE
			SRG	12-22-64
			CHECKED	DATE
			SRG	12-23-64
			ELECT. DES.	DATE
			MECH. DES.	DATE
			FINAL APPROVAL	
			[Signature] 6/19/65	
			PX 890	
			SHEET	
			REV. LTR.	

1	TER-25K	
Q'TY./UNIT	MODEL USED ON	ASS'Y. NO.
SCALE	CODE	
1/2:1	A	
THE CONTENTS OF THIS DRAWING ARE THE EXCLUSIVE PROPERTY OF THE TECHNICAL MATERIEL CORP. ITS UNAUTHORIZED USE OR REPRODUCTION IN WHOLE OR IN PART IS STRICTLY FORBIDDEN.		

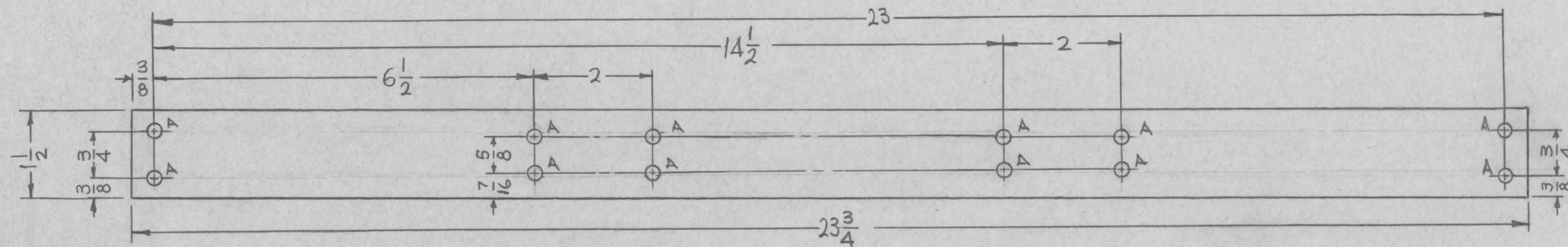
NOTES



PX 891

REVISIONS

SYM	DESCRIPTION	DATE	E.M.N. NO.	DRAFT	CHKD	APPD
		12-21-64	X	SRG		



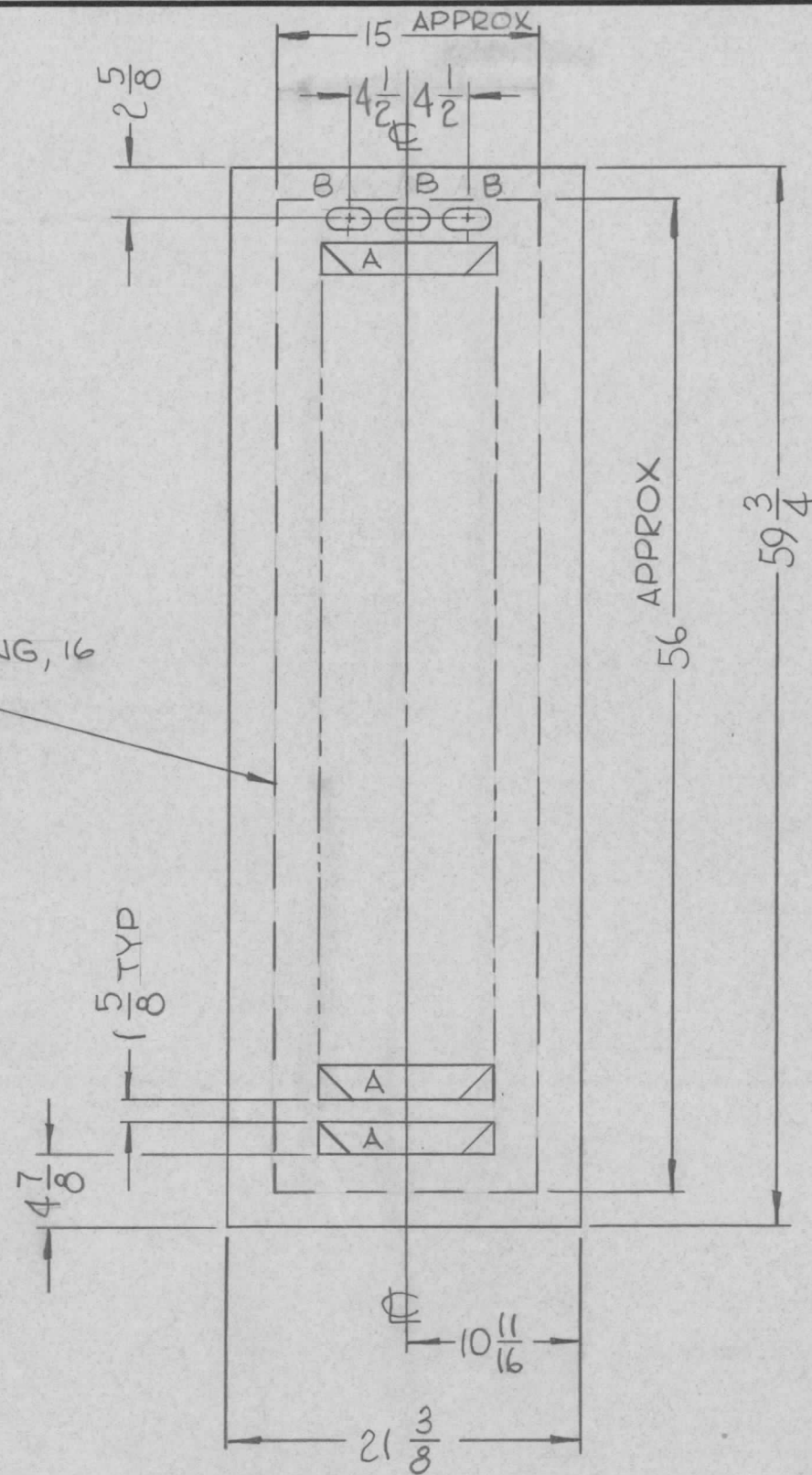
HOLES	DESCRIPTION	REQ.
A	15/64 DIA.	12

REQ'D.	ITEM	PART NUMBER	DESCRIPTION	SYMBOL
	L. BUTLER		LIST OF MATERIAL	
MATERIAL			THE TECHNICAL MATERIEL CORP. MAMARONECK, NEW YORK	
1/2 THICK XXXP PHENOLIC			TITLE SUPPORT, TOP	
FINISH			SII3-FUNGUS PROOF	
UNLESS OTHERWISE SPECIFIED DIMENSIONS ARE IN INCHES AND INCLUDE CHEMICALLY APPLIED OR PLATED FINISHES			DRAWN SRG	DATE 12-21-64
			CHECKED J.S.	DATE 12-22-64
DECIMALS .X ± .05 .XX ± .01 .XXX ± .005			ELECT. DES.	DATE
TOLERANCES			MECH. DES. [Signature]	DATE
FRACTIONS ± 1/64 ANGLES ± 0° 30'			FINAL APPROVAL [Signature] 6/9/65	
THE CONTENTS OF THIS DRAWING ARE THE EXCLUSIVE PROPERTY OF THE TECHNICAL MATERIEL CORP. ITS UNAUTHORIZED USE OR REPRODUCTION IN WHOLE OR IN PART IS STRICTLY FORBIDDEN.			P.X.891	
SCALE 1/2:1			SHEET	
CODE A			REV. LTR. Ø	

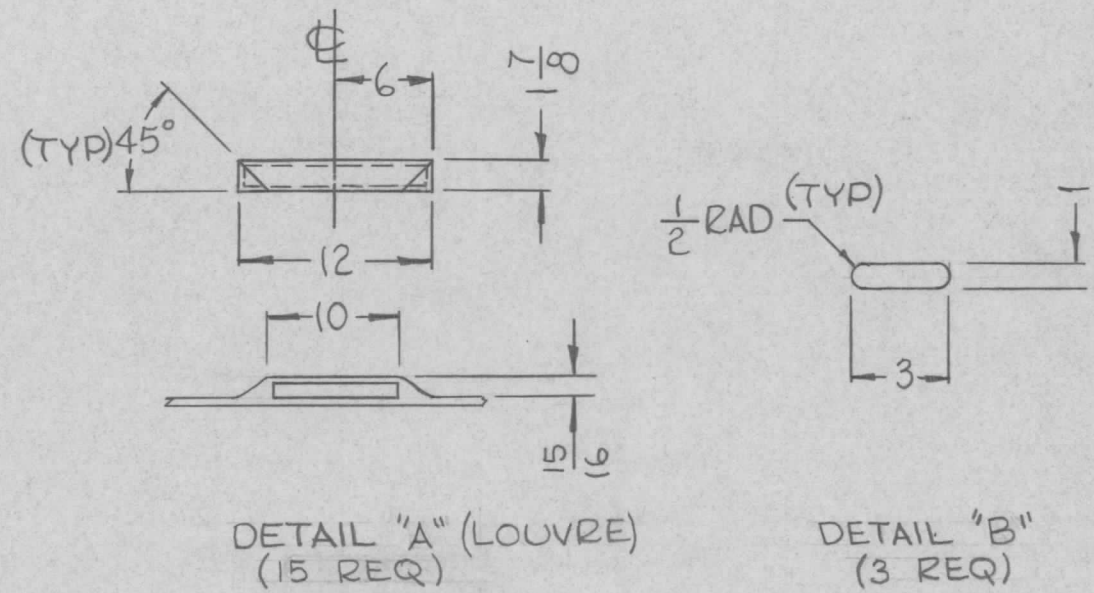
4	TER-25K	
Q'TY./UNIT	MODEL USED ON	ASS'Y. NO.
SCALE 1/2:1	CODE A	

NOTES

FIBERGLASS SCREENING, 16 MESH - DOTTED LINES



SYM	REVISIONS					
	DESCRIPTION	DATE	E.M.N. NO.	DRAFT	CHKD	APPD
PX892	ORIGINAL RELEASE FOR PRODUCTION					



NOTE: THIS ITEM IS THE BLANK PANEL USED TO MANUFACTURE PX365-1,-2 & PX366.

4	TER-5000	A4131 (8)
Q'TY./UNIT	MODEL USED ON	ASS'Y. NO.
SCALE	CODE	

NOTES

THE CONTENTS OF THIS DRAWING ARE THE EXCLUSIVE PROPERTY OF THE TECHNICAL MATERIEL CORP. ITS UNAUTHORIZED USE OR REPRODUCTION IN WHOLE OR IN PART IS STRICTLY FORBIDDEN.

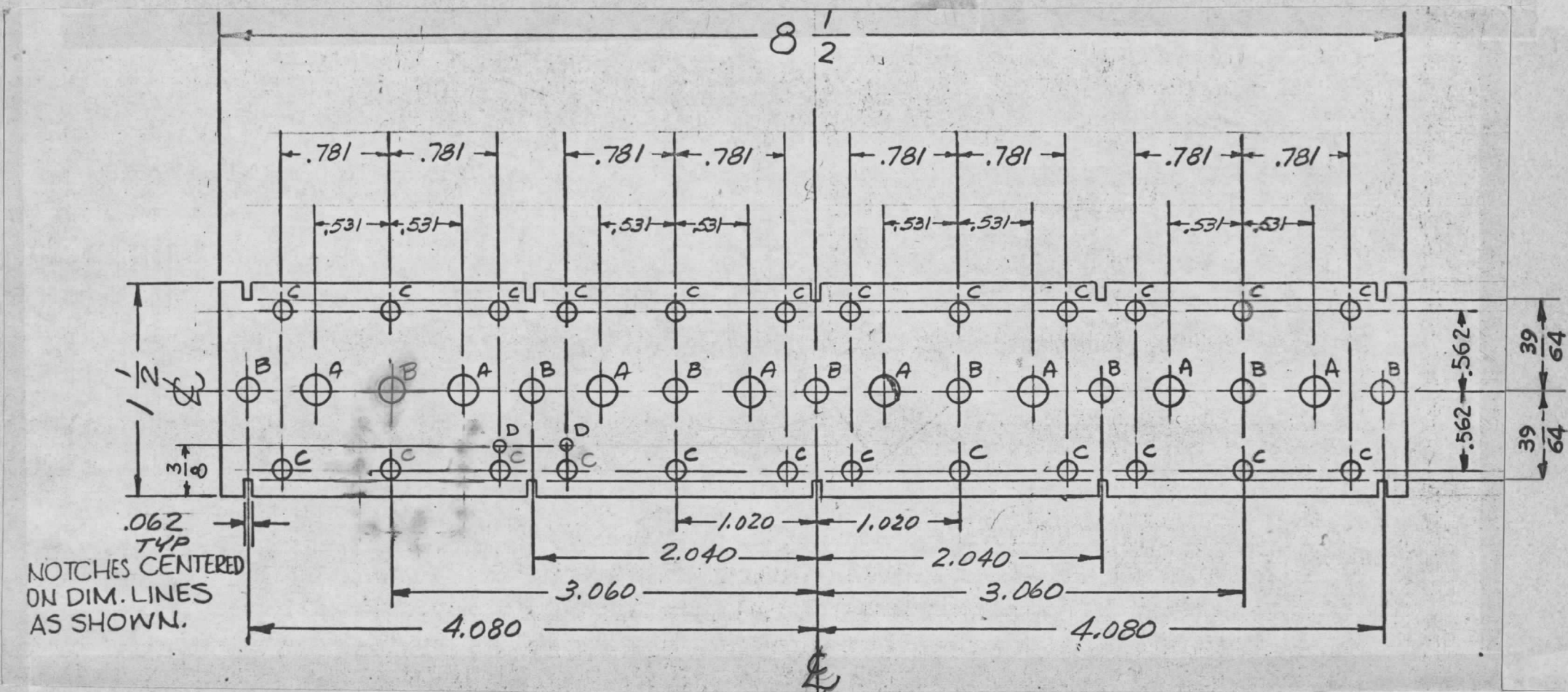
REQ'D.	ITEM	PART NUMBER	DESCRIPTION	SYMBOL
LIST OF MATERIAL				
MATERIAL		THE TECHNICAL MATERIEL CORP. MAMARONECK, NEW YORK		
FINISH		TITLE		
1/8 THK FIBERGLASS		PANEL, BLANK		
S756 GRAY SYNTHETIC ENAMEL				
UNLESS OTHERWISE SPECIFIED DIMENSIONS ARE IN INCHES AND INCLUDE CHEMICALLY APPLIED OR PLATED FINISHES		DRAWN	DATE	FINAL APPROVAL
		DATE	DATE	DATE
DECIMALS		ELECT. DES.		PX892
FRACTIONS		MECH. DES.		
TOLERANCES		DATE		
.X ± .05				SHEET
.XX ± .01				REV. LTR.
.XXX ± .005				

PX 894 A

REVISIONS

SYM	DESCRIPTION	DATE	E.M.N. NO.	DRAFT	CHKD	APPD
X	EXPER. RELEASE	1-13-64		G.D.L.		
Ø	ORIGINAL RELEASE FOR PRODUCTION	3-19-65		G.D.L.		
A	"D" AND "E" HOLES DELETED. "B" HOLE ADD. "A" DELETED.	3/27/65	14735	AVJ.		

HOLE	DESCRIPTION	REQ.
A	.203 DIA.	8
B	.156 DIA.	9
C	.116 DIA.	24
D	.040 DIA.	2
E	.031 DIA.	1



REF. LD1728 THRU LD1735

REQ'D.	ITEM	PART NUMBER	DESCRIPTION	SYMBOL
J. ANGER LIST OF MATERIAL				
MATERIAL		THE TECHNICAL MATERIEL CORP.		
FINISH		MAMARONECK, NEW YORK		
NATURAL		BOARD, MOUNTING, COMPONENTS		
UNLESS OTHERWISE SPECIFIED		TITLE		
DIMENSIONS ARE IN INCHES AND INCLUDE		RF		
CHEMICALLY APPLIED OR PLATED FINISHES		DRAWN G.D.L.		
DECIMALS		DATE		
.X ± .05		DATE		
.XX ± .01		DATE		
.XXX ± .005		DATE		
TOLERANCES		DATE		
FRACTIONS		DATE		
± 1/64		DATE		
ANGLES		DATE		
± 0° 30'		DATE		
ELECT. DES.		DATE		
MECH. DES.		DATE		
SHEET		DATE		
REV. LTR.		DATE		

8	CHG-3	
Q'TY./UNIT	MODEL USED ON	ASS'Y. NO.
SCALE	CODE	
1:1	A	

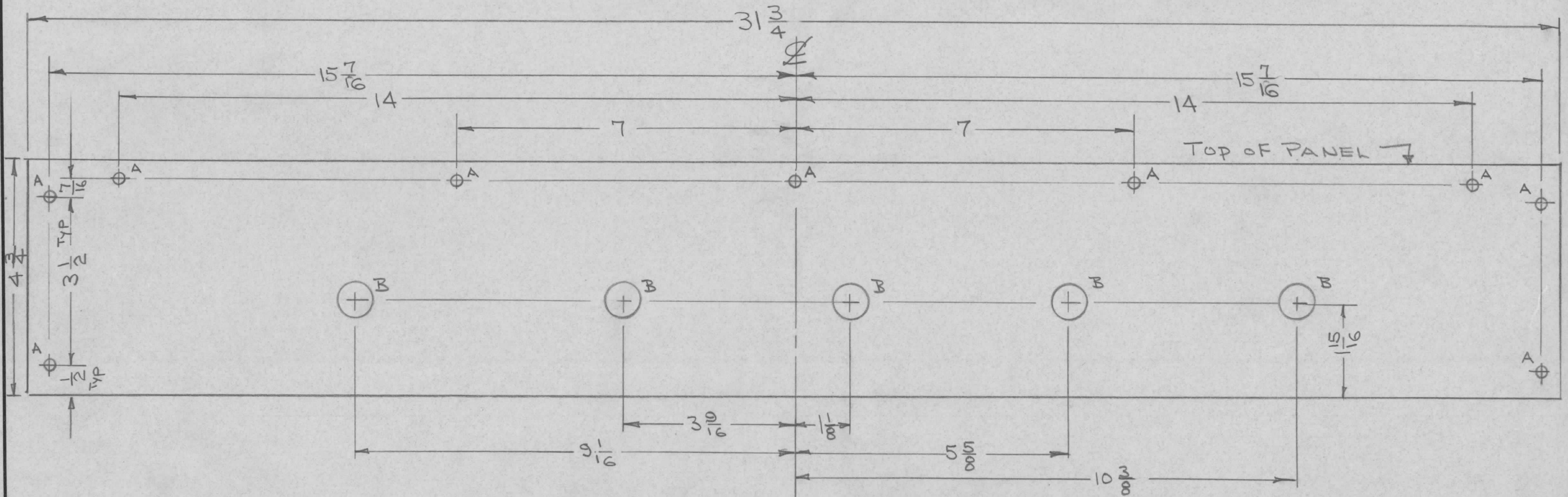
THE CONTENTS OF THIS DRAWING ARE THE EXCLUSIVE PROPERTY OF THE TECHNICAL MATERIEL CORP. ITS UNAUTHORIZED USE OR REPRODUCTION IN WHOLE OR IN PART IS STRICTLY FORBIDDEN.

NOTES

A - 15/64 DIA - 9 REQ  
 B - 3/4 DIA - 5 REQ

PX895

REVISIONS						
SYM	DESCRIPTION	DATE	E.M.N. NO.	DRAFT	CHKD	APPD
Ø	ORIGINAL RELEASE FOR PRODUCTION	1-18-66	Ø	G.D.L.		



INTERIOR VIEW SHOWN REF: LD 1738

REQ'D.	ITEM	PART NUMBER	DESCRIPTION	SYMBOL
		BUDETTI	LIST OF MATERIAL	
MATERIAL			THE TECHNICAL MATERIEL CORP.	
1/2 THICK EPOXY, G-11			MAMARONECK, NEW YORK	
FINISH			TITLE	
NATURAL			BOARD, MTG., H.V. CONTACTS	
UNLESS OTHERWISE SPECIFIED DIMENSIONS ARE IN INCHES AND INCLUDE CHEMICALLY APPLIED OR PLATED FINISHES			DRAWN	DATE
			Hoe	1-18-66
			CHECKED	DATE
			Q/S	1-18-66
			ELECT. DES.	DATE
			aa	
			MECH. DES.	DATE
			nr	
			FINAL APPROVAL	DATE
			M/Ham	1/19/66
			PX895	
			SHEET	REV. LTR.
				Ø

Q'TY./UNIT	MODEL USED ON	ASS'Y. NO.
1	HVRA-1	
SCALE	CODE	
#		

THE CONTENTS OF THIS DRAWING ARE THE EXCLUSIVE PROPERTY OF THE TECHNICAL MATERIEL CORP. ITS UNAUTHORIZED USE OR REPRODUCTION IN WHOLE OR IN PART IS STRICTLY FORBIDDEN.

NOTES