

THE CONTENTS OF THIS DRAWING ARE THE EXCLUSIVE PROPERTY OF THE TECHNICAL MATERIEL CORP. ITS UNAUTHORIZED USE FOR REPRODUCTION IN WHOLE OR IN PART IS STRICTLY FORBIDDEN.

REQ. PER UNIT

1

USED ON

MODEL

GPT-200K

ASS'Y. NO.

AS-124

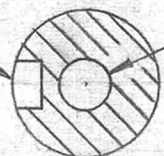
DATE

1-30-63

PX-707

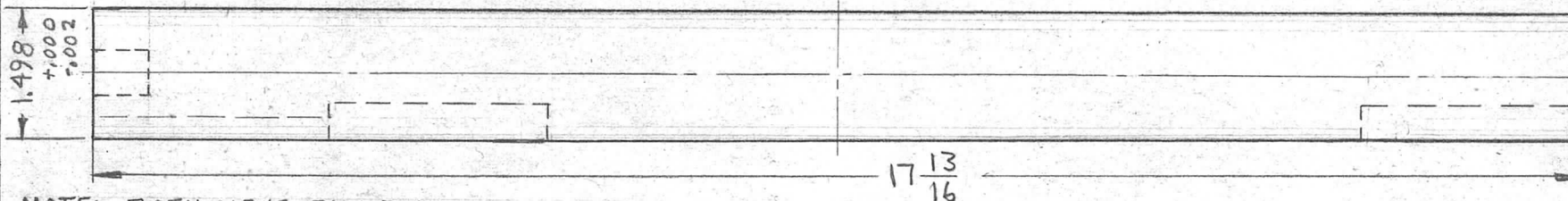
A

1/4 W x 1/4 DP.

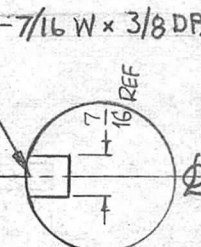
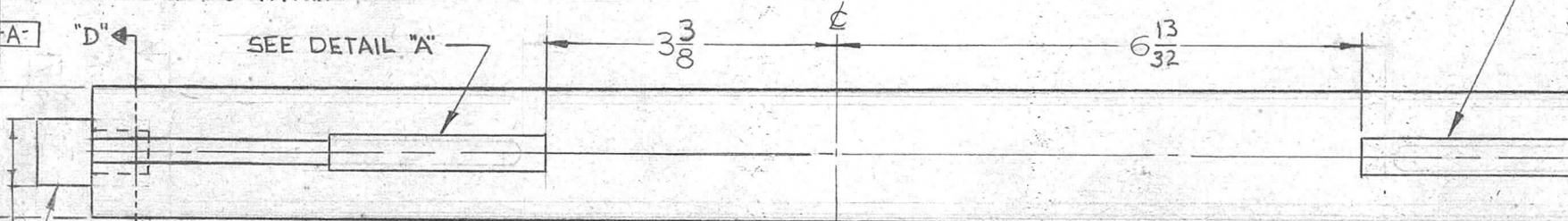


1/2 DIA. (DRILLED TO MATE SECURELY WITH DETAIL "B")

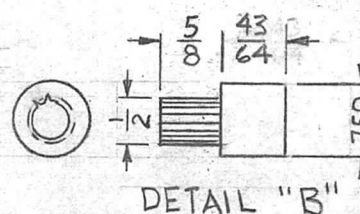
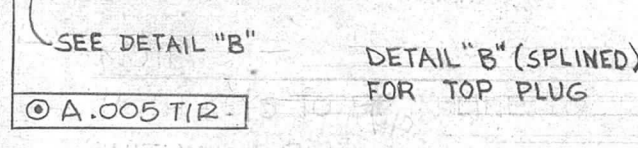
SECTION "D"- "D"



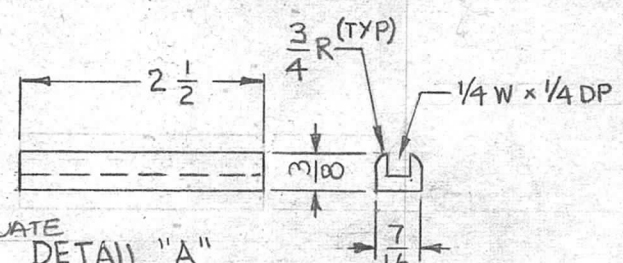
NOTE: BOTH KEYS TO BE IN LINE TO WITHIN ± 0.2°



NOTE: TOP PLUG & KEYWAY INSERTS TO BE STAKED SECURELY.



ST. STL. NON MAGNETIC, 303 (DETAILS "A" & "B")
FINISH S104 PASSIVATE (BEFORE ASS'Y)

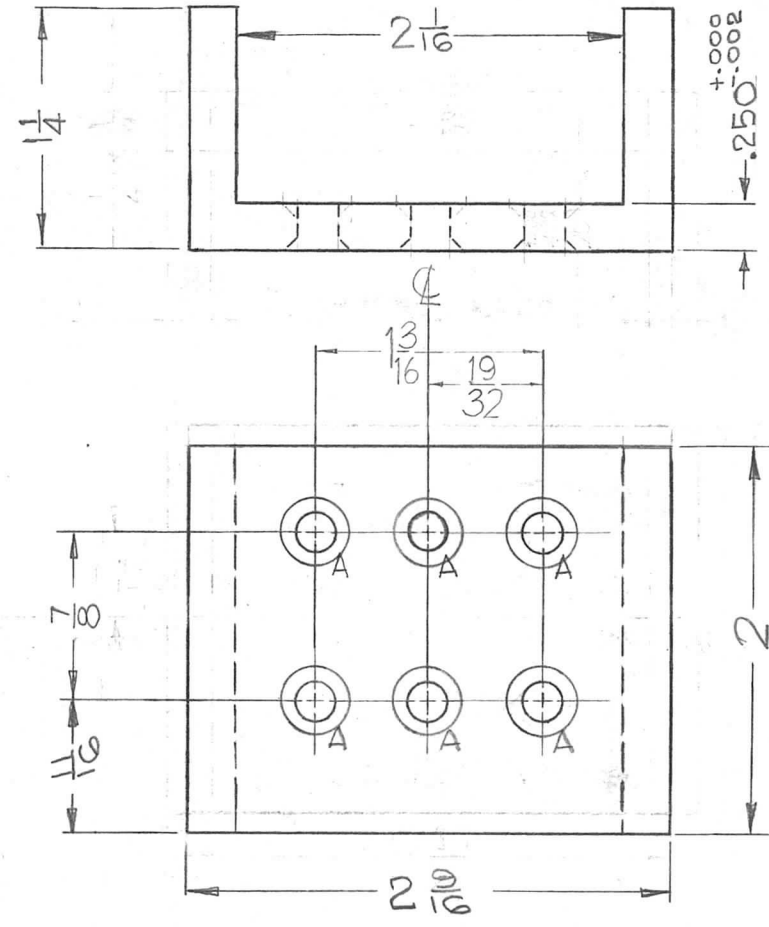


REQ. ITEM	PART NO.	F. BUDETTI	DESCRIPTION	SYMBOL			
A	COMPLETELY REVISED	3-8-65	13628	SL. <i>gcs</i>	1-1/2" DIA.	THE TECHNICAL MATERIEL CORP. MAMARONECK, NEW YORK SHAFT, BANDSWITCH (SM)	
O	ORIG. RELEASE FOR PROD	5-16-64		SRG	STOCK SIZE		
XI	SHAFT DIA. WAS 1-1/2				MYCALEX		
SYM	DESCRIPTION	DATE	CH. NO.	DRAFTS	CHECKER		ENG. APP.
UNLESS OTHERWISE SPECIFIED DIMENSIONS ARE IN INCHES AND INCLUDE CHEMICALLY APPLIED OR PLATED FINISHES		SCALE					
		1/2" = 1"					
DECIMALS	TOLERANCES	FRACTIONS	CODE				
.X ± .05		± 1/64					
.XX ± .01		ANGLES					
.XXX ± .005		± 0° 30'					
SUPRA MICA - 500		HEAT TREAT. SPEC.		DRAWN		CHECKED	FINAL APPROVAL
				<i>SRG</i>		<i>aa</i>	<i>RAC</i>
FINISH & SPEC. NO.		ELEC. DES. APP.		MECH. DES. APP.		PX-707 A	

THE CONTENTS OF THIS DRAWING ARE THE EXCLUSIVE PROPERTY OF THE TECHNICAL MATERIEL CORP. ITS UNAUTHORIZED USE OR REPRODUCTION IN WHOLE OR IN PART IS STRICTLY FORBIDDEN.

REQ. PER UNIT	USED ON		
	MODEL	ASS'Y. NO.	DATE
8	GPT-200K AS-123	AX-447	5-11-64
4	GPT-200K AS-123	AX-448	5-11-64

PX-710 0



HOLES
 A. -.169 D. THRU, C'SK 82° X .337 D
 G REQ

NOTE
 ROUND ALL EDGES 1/16R

SYM	DESCRIPTION	DATE	CH. NO.	DRAFTS	CHECKER	ENG. APP.	REQ. ITEM	PART NO.	DESCRIPTION	SYMBOL	
0	ORIGINAL RELEASE	5.16.64			JB		1/4 THICK		THE TECHNICAL MATERIEL CORP. MAMARONECK, NEW YORK	INSULATOR TEFLON BANDSWITCH	
X3	1/8					TEFLON					
						MATERIAL					
UNLESS OTHERWISE SPECIFIED: DIMENSIONS ARE IN INCHES TOLERANCES ON FRAC. ± 1/64 DEC. ± .005 ANGLES ± 1/2°							SCALE: MAXIMUM ALLOWABLE TOLERANCES HAVE BEEN DETERMINED AND ANY DEVIATIONS WILL BE CAUSE FOR REJECTION. REMOVE ALL BURRS AND SHARP EDGES		J.F. VITTO	aa #b	
							TYPE & TEMPER	HEATTREAT. SPEC.	DRAWN	CHECKED	FINAL APPROVAL
							FINISH & SPEC. NO.		ELEC. DES. APP.	MECH. DES. APP.	PX-710 0

THE CONTENTS OF THIS DRAWING ARE THE EXCLUSIVE PROPERTY OF THE TECHNICAL MATERIEL CORP. ITS UNAUTHORIZED USE OR REPRODUCTION IN WHOLE OR IN PART IS STRICTLY FORBIDDEN.

REQ. PER UNIT

USED ON

MODEL

ASS'Y. NO.

DATE

2

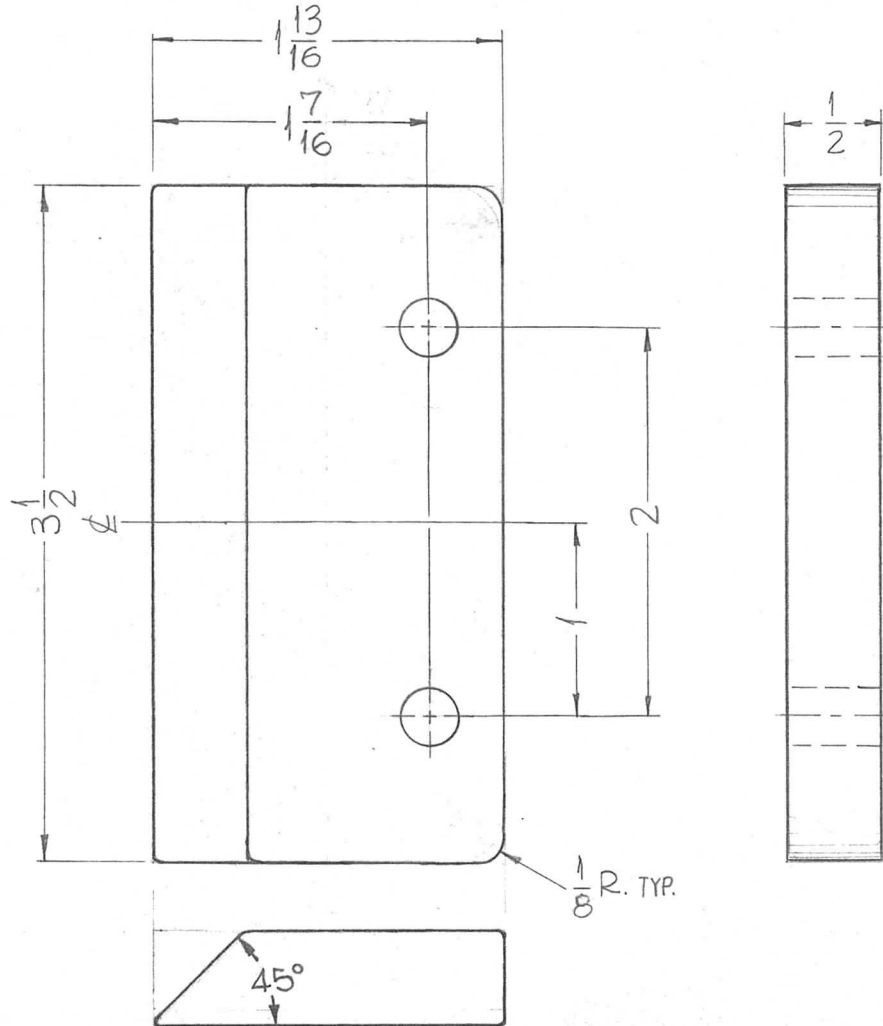
GPT-200K

AS-123

12-6-62

PX-711

0



HOLES

9/32 DIA. (2 REQ.)

NOTE

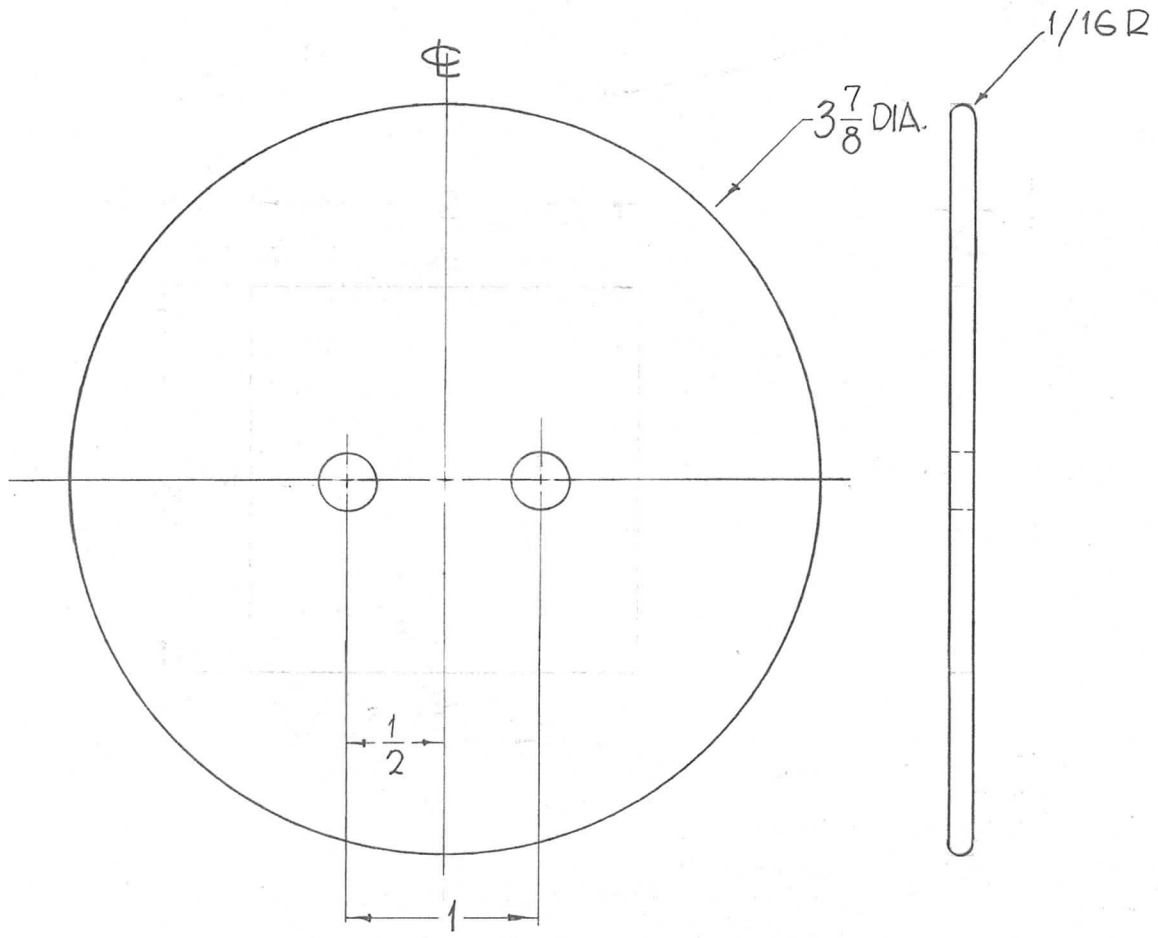
UNLESS OTHERWISE SPECIFIED USE 1/32 RAD. ON ALL CORNERS & EDGES.

REQ.	ITEM	PART NO.	F. BUDETTI		DESCRIPTION	SYMBOL
		1/2 THICK	THE TECHNICAL MATERIEL CORP.			
		STOCK SIZE	MAMARONECK,		NEW YORK	
0	ORIGINAL RELEASE	5.16.64	ASB	SPACER, BANDSWITCH		
SYM	DESCRIPTION	DATE	CH. NO.	DRAFTS	CHECKER	ENG. APP.
UNLESS OTHERWISE SPECIFIED:		SCALE:				
DIMENSIONS ARE IN INCHES		MAXIMUM ALLOWABLE TOLERANCES HAVE BEEN DETERMINED AND ANY DEVIATIONS WILL BE CAUSE FOR REJECTION.				
TOLERANCES ON		REMOVE ALL BURRS AND SHARP EDGES				
FRAC. ± 1/64 DEC. ± .005 ANGLES ± 1/2°						
		TYPE & TEMPER	HEATTREAT. SPEC.	DRAWN	CHECKED	FINAL APPROVAL
				SRG	aa AB RCL	
		FINISH & SPEC. NO.		ELEC. DES. APP.	MECH. DES. APP.	
						PX-711 0

THE CONTENTS OF THIS DRAWING ARE THE EXCLUSIVE PROPERTY OF THE TECHNICAL MATERIEL CORP. ITS UNAUTHORIZED USE OR REPRODUCTION IN WHOLE OR IN PART IS STRICTLY FORBIDDEN.

REQ. PER UNIT	USED ON		
	MODEL	ASS'Y. NO.	DATE
4	GPT-200K	AS-123	12-6-62

PX-712 0



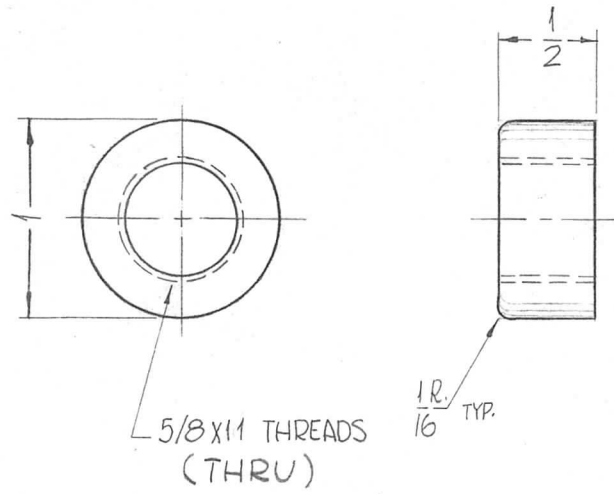
HOLES:
9/32 DIA. (2REQ.)

							REQ.	ITEM	PART NO.	F. BUDETTI	DESCRIPTION	SYMBOL	
									1/8 THICK	THE TECHNICAL MATERIEL CORP. MAMARONECK, NEW YORK			
									STOCK SIZE	SPACER, SUPPORT BANDSWITCH			
									TEFLON				
									MATERIAL				
0	ORIGINAL RELEASE	5.16.64			WTB					SRG	aa #3	RAC	
X1	1/16R ADDED	11/14/63											
SYM	DESCRIPTION	DATE	CH. NO.	DRAFTS	CHECKER	ENG. APP.							
UNLESS OTHERWISE SPECIFIED:		SCALE: 1" = 1"					TYPE & TEMPER		HEATTREAT. SPEC.	DRAWN	CHECKED	FINAL APPROVAL	
DIMENSIONS ARE IN INCHES		MAXIMUM ALLOWABLE TOLERANCES HAVE BEEN DETERMINED AND ANY DEVIATIONS WILL BE CAUSE FOR REJECTION. REMOVE ALL BURRS AND SHARP EDGES					NATURAL					PX-712	0
TOLERANCES ON							FINISH & SPEC. NO.		ELEC. DES. APP.	MECH. DES. APP.			
FRAC. ± 1/64 DEC. ± .005 ANGLES ± 1/2°													

THE CONTENTS OF THIS DRAWING ARE THE EXCLUSIVE PROPERTY OF THE TECHNICAL MATERIEL CORP. ITS UNAUTHORIZED USE FOR REPRODUCTION IN WHOLE OR IN PART IS STRICTLY FORBIDDEN.

REQ. PER UNIT	USED ON		
	MODEL	ASS'Y. NO.	DATE
2	GPT-200K	AX-395	1-17-63
2	GPT-200K (AX-395)	A-3258	4-20-64

PX-716 0



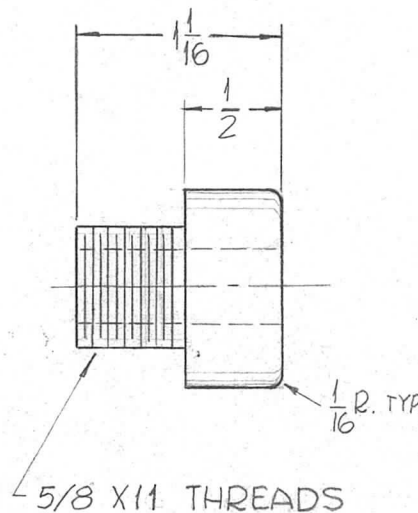
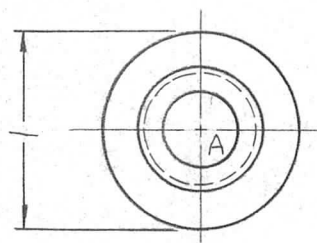
MATES WITH - PX-717-

REQ.	ITEM	PART NO.	F. BUDETTI DESCRIPTION				SYMBOL
		AS NOTED	THE TECHNICAL MATERIEL CORP. MAMARONECK, NEW YORK				
		STOCK SIZE	NUT, TEFLON, CABLE FEED THRU				
		TEFLON					
		MATERIAL					
0	ORIG. RELEASE FOR PROD.	5-5-64	SRG				
SYM	DESCRIPTION	DATE	CH. NO.	DRAFTS	CHECKER	ENG. APP.	
UNLESS OTHERWISE SPECIFIED DIMENSIONS ARE IN INCHES AND INCLUDE CHEMICALLY APPLIED OR PLATED FINISHES		SCALE	1"=1"				
DECIMALS .X ± .05 .XX ± .01 .XXX ± .005	TOLERANCES	FRACTIONS ± 1/64 ANGLES ± 0° 30'	CODE				
			A				
FINISH & SPEC. NO.		ELEC. DES. APP.	MECH. DES. APP.	PX-716 0			

THE CONTENTS OF THIS DRAWING ARE THE EXCLUSIVE PROPERTY OF THE TECHNICAL MATERIEL CORP. ITS UNAUTHORIZED USE FOR REPRODUCTION IN WHOLE OR IN PART IS STRICTLY FORBIDDEN.

REQ. PER UNIT	USED ON		
	MODEL	ASS'Y. NO.	DATE
2	GPT-200K	AX-395	1-17-63
2	GPT-200K (AX-395)	A-3258	4-20-64

PX-717 0



HOLE:
A ~ 3/8 DIA.

MATES WITH - PX-716 -

REQ.	ITEM	PART NO.	F. BUDETTI	DESCRIPTION	SYMBOL	
		AS NOTED		THE TECHNICAL MATERIEL CORP. MAMARONECK, NEW YORK	PX-717 0	
		STOCK SIZE				
		TEFLON				
		MATERIAL		SCREW, TEFLON, CABLE FEED THRU		
0	ORIG. RELEASE FOR PROD.	5-5-64	SRG			
SYM	DESCRIPTION	DATE	CH. NO.	DRAFTS	CHECKER	ENG. APP.
UNLESS OTHERWISE SPECIFIED DIMENSIONS ARE IN INCHES AND INCLUDE CHEMICALLY APPLIED OR PLATED FINISHES		SCALE	1" = 1"			
DECIMALS .X ± .05 .XX ± .01 .XXX ± .005	TOLERANCES	FRACTIONS ± 1/64 ANGLES ± 0° 30'	CODE	A		
		TYPE & TEMPER	HEAT TREAT. SPEC.	DRAWN	CHECKED	FINAL APPROVAL
				SRG	OO	Rove
		FINISH & SPEC. NO.		ELEC. DES. APP.	MECH. DES. APP.	

THE CONTENTS OF THIS DRAWING ARE THE EXCLUSIVE PROPERTY OF THE TECHNICAL MATERIEL CORP. ITS UNAUTHORIZED USE FOR REPRODUCTION IN WHOLE OR IN PART IS STRICTLY FORBIDDEN.

REQ. PER UNIT

2

USED ON

MODEL

GPT-200K

ASS'Y. NO.

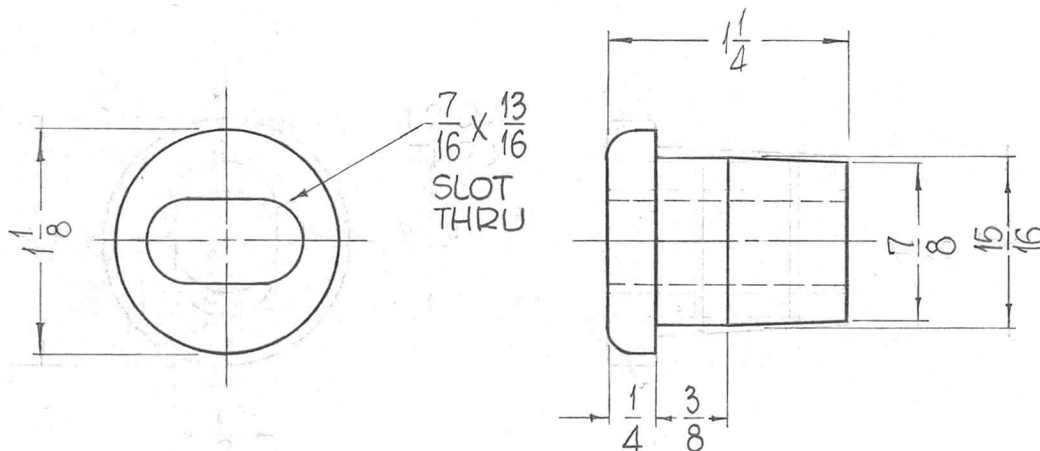
AS-123

DATE

1-16-63

PX-718

0



NOTE:
ROUND ALL EDGES

						REQ.	ITEM	PART NO.	F. BUDETTI	DESCRIPTION	SYMBOL
									THE TECHNICAL MATERIEL CORP. MAMARONECK, NEW YORK		
						STOCK SIZE			FEED THRU, LEAD		
O ORIGINAL RELEASE						TEFLON					
5.16.64											
JWB											
SYM	DESCRIPTION	DATE	CH. NO.	DRAFTS	CHECKER	ENG. APP.	MATERIAL				
UNLESS OTHERWISE SPECIFIED DIMENSIONS ARE IN INCHES AND INCLUDE CHEMICALLY APPLIED OR PLATED FINISHES						SCALE					
DECIMALS .X ± .05 .XX ± .01 .XXX ± .005						FRACTIONS ± 1/64 ANGLES ± 0° 30'					
TOLERANCES						CODE					
						TYPE & TEMPER		HEAT TREAT. SPEC.	DRAWN	CHECKED	FINAL APPROVAL
						NONE			JWB	an 2/4/64	PX-718
						FINISH & SPEC. NO.		ELEC. DES. APP.	MECH. DES. APP.		0

THE CONTENTS OF THIS DRAWING ARE THE EXCLUSIVE PROPERTY OF THE TECHNICAL MATERIEL CORP. ITS UNAUTHORIZED USE FOR REPRODUCTION IN WHOLE OR IN PART IS STRICTLY FORBIDDEN.

REQ. PER UNIT

4

MODEL

GPT-200K

USED ON

ASS'Y. NO.

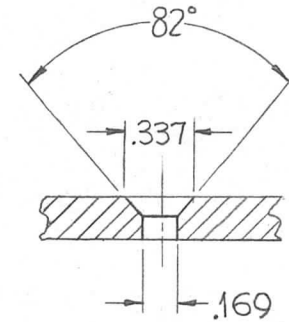
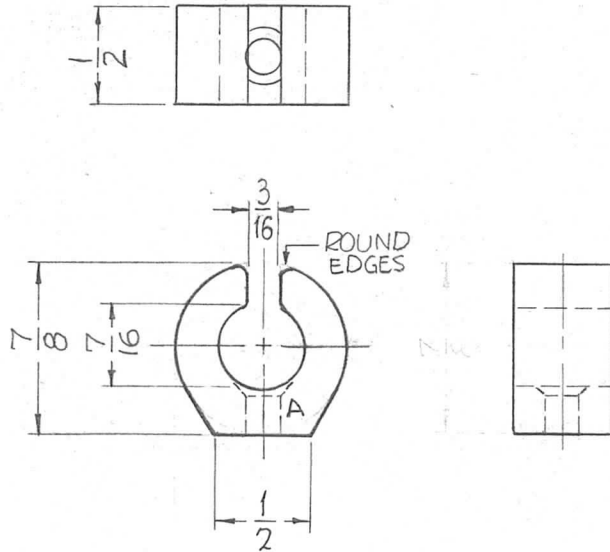
AX-395

DATE

4-15-63

PX-719

0

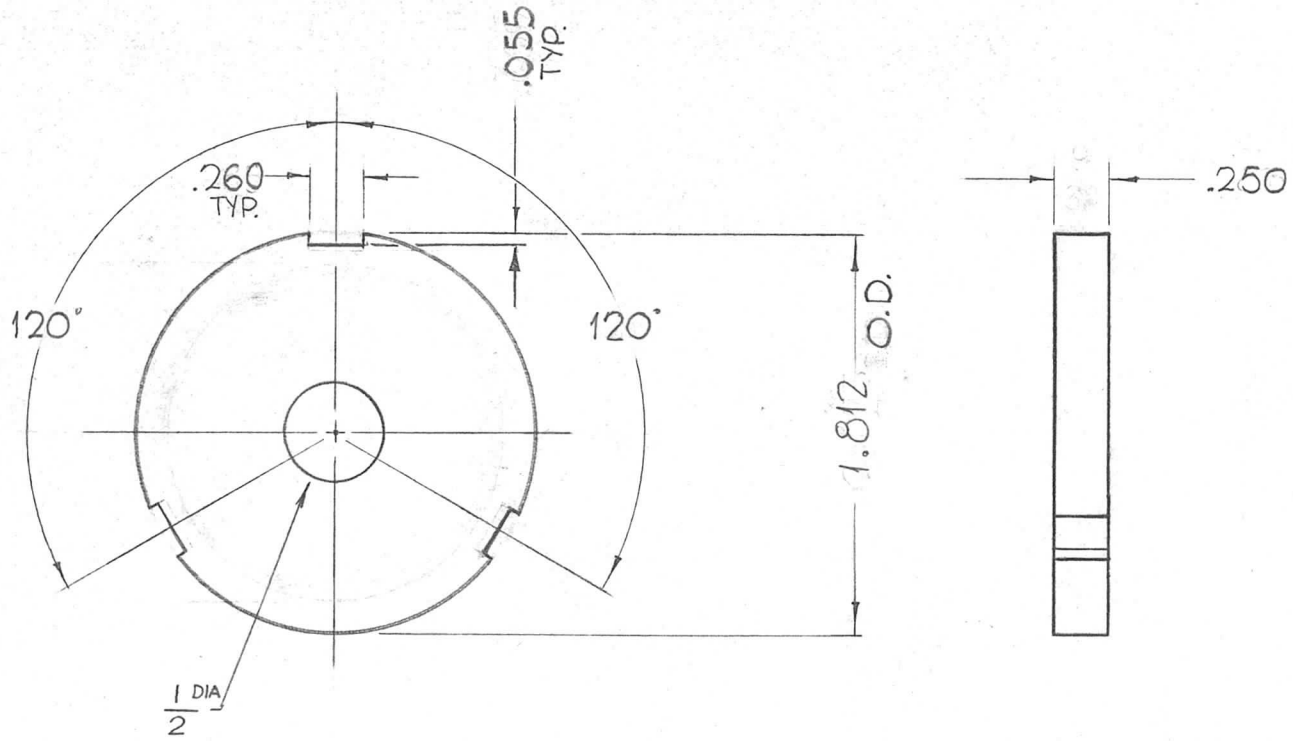


A-DETAIL
(1REQ.)

							REQ.	ITEM	PART NO.	BUDETTI	DESCRIPTION	SYMBOL
										THE TECHNICAL MATERIEL CORP. MAMARONECK, NEW YORK		
							STOCK SIZE			CLAMP, CABLE MTG.		
							TEFLON					
							MATERIAL					
UNLESS OTHERWISE SPECIFIED DIMENSIONS ARE IN INCHES AND INCLUDE CHEMICALLY APPLIED OR PLATED FINISHES							SCALE			SRG aa RAC		
DECIMALS .X ± .05 .XX ± .01 .XXX ± .005							FRACTIONS ± 1/64 ANGLES ± 0° 30'			TYPE & TEMPER HEAT TREAT. SPEC. DRAWN CHECKED FINAL APPROVAL		
TOLERANCES							CODE			ELEC. DES. APP. MECH. DES. APP.		
										PX-719 0		

THE CONTENTS OF THIS DRAWING ARE THE EXCLUSIVE PROPERTY OF THE TECHNICAL MATERIEL CORP. ITS UNAUTHORIZED USE FOR REPRODUCTION IN WHOLE OR IN PART IS STRICTLY FORBIDDEN.

REQ. PER UNIT	USED ON			PX-720	A
	MODEL	ASS'Y. NO.	DATE		
2	GPT-200K AX-395	A-3163	4-17-63		

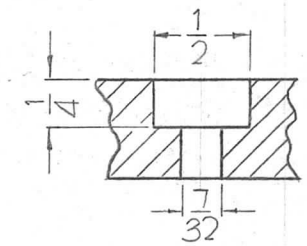
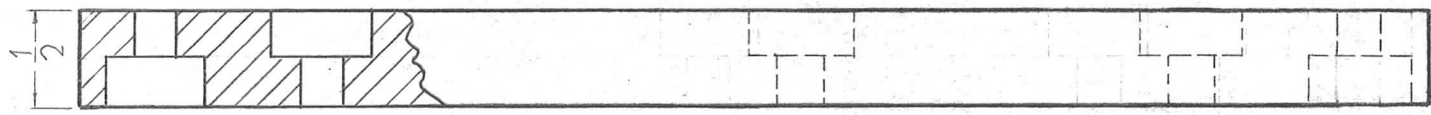


						REQ. ITEM	PART NO.	F. BUDETTI	DESCRIPTION	SYMBOL	
						1/4 THICK		THE TECHNICAL MATERIEL CORP.			
						STOCK SIZE		MAMARONECK, NEW YORK			
A	DIM. .055 WAS .109		3-7-67	17889	GDL	TEFLON		SPACER, COIL			
0	ORIGINAL RELEASE		5.16.64		LSB	MATERIAL					
SYM	DESCRIPTION		DATE	CH. NO.	DRAFTS	CHECKER	ENG. APP.				
UNLESS OTHERWISE SPECIFIED DIMENSIONS ARE IN INCHES AND INCLUDE CHEMICALLY APPLIED OR PLATED FINISHES			SCALE			DO NOT SCALE					
DECIMALS		FRACTIONS		CODE		TYPE & TEMPER		HEAT TREAT. SPEC.	DRAWN	CHECKED	FINAL APPROVAL
.X ± .05		± 1/64				NONE			John C. Biele	aa	Roe
.XX ± .01		ANGLES									
.XXX ± .005		± 0° 30'									
						FINISH & SPEC. NO.		ELEC. DES. APP.	MECH. DES. APP.	PX-720	A

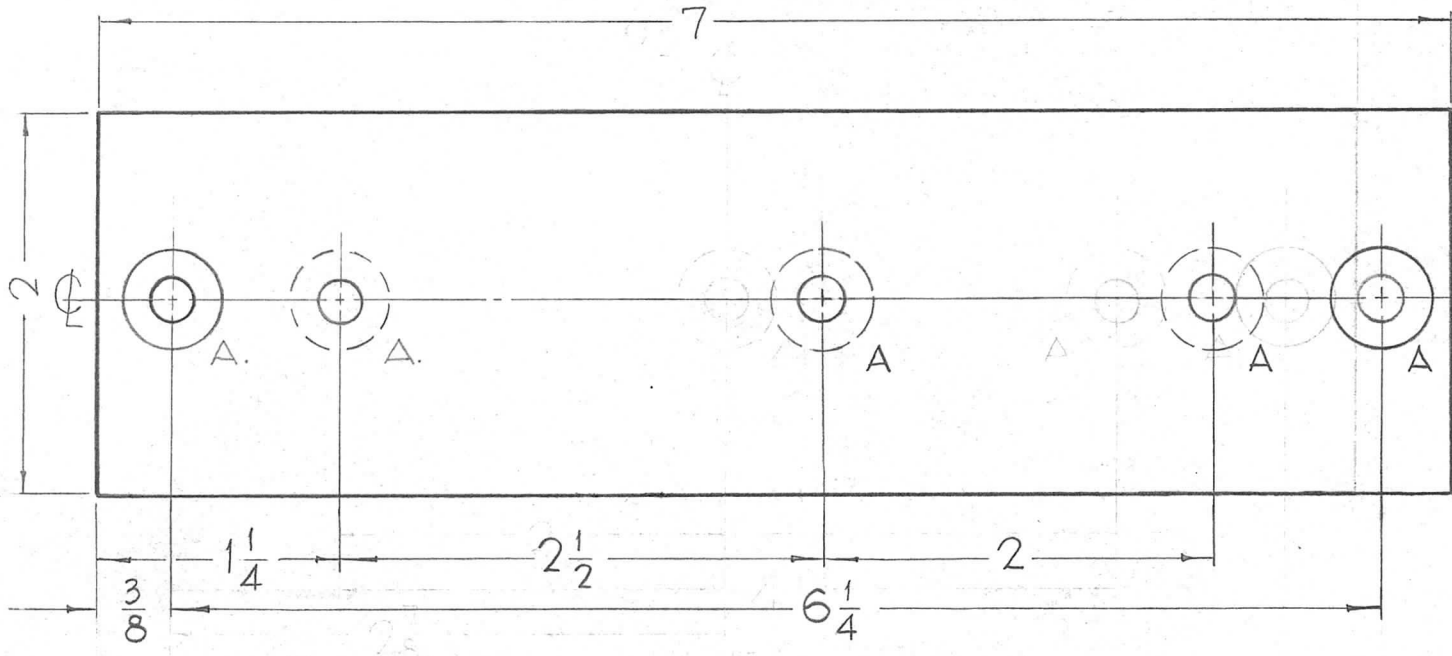
THE CONTENTS OF THIS DRAWING ARE THE EXCLUSIVE PROPERTY OF THE TECHNICAL MATERIEL CORP. ITS UNAUTHORIZED USE OR REPRODUCTION IN WHOLE OR IN PART IS STRICTLY FORBIDDEN.

REQ. PER UNIT	USED ON		
	MODEL	ASS'Y. NO.	DATE
2	GPT-200K	AP-109	6-3-63
2	GPT-200K	AP-111	6-3-63

PX-726 0



DETAIL "A" 5 REQ.



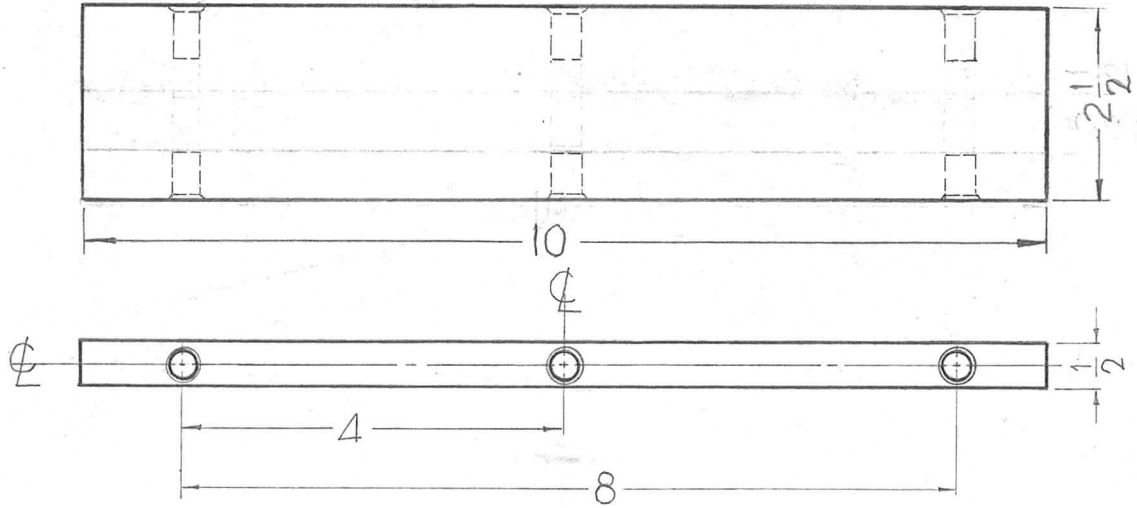
REF: LD-1222 (1)
LD-1223 (1)

REQ.	ITEM	PART NO.	F. BUDETTI DESCRIPTION			SYMBOL
		1/2 THICK	THE TECHNICAL MATERIEL CORP.			
		STOCK SIZE	MAMARONECK, NEW YORK			
0	ORIGINAL RELEASE	5.16.64	BOARD, RESISTOR CLIP MTG.			
		EPOXY	(SMALL)			
		MATERIAL				
SYM	DESCRIPTION	DATE	CH. NO.	DRAFTS	CHECKER	ENG. APP.
	UNLESS OTHERWISE SPECIFIED:	SCALE: FULL				
	DIMENSIONS ARE IN INCHES					
	TOLERANCES ON					
	FRAC. ± 1/64 DEC. ± .005 ANGLES ± 1/2°					
	MAXIMUM ALLOWABLE TOLERANCES HAVE BEEN DETERMINED AND ANY DEVIATIONS WILL BE CAUSE FOR REJECTION. REMOVE ALL BURRS AND SHARP EDGES					
		G-11			J.F. VITRO	aa RAC
		NATURAL			DRAWN	CHECKED
		FINISH & SPEC. NO.				FINAL APPROVAL
						PX-726 0
					ELEC. DES. APP.	MECH. DES. APP.

THE CONTENTS OF THIS DRAWING ARE THE EXCLUSIVE PROPERTY OF THE TECHNICAL MATERIEL CORP. ITS UNAUTHORIZED USE OR REPRODUCTION IN WHOLE OR IN PART IS STRICTLY FORBIDDEN.

REQ. PER UNIT	USED ON		
	MODEL	ASS'Y. NO.	DATE
2	GPT-200K	AP-109	6-10-63
2	GPT-200K	AP-111	6-10-63

PX-727 0



HOLES:

- 1~ DRILL 13/64 (.200) TO .552 MIN. DEPTH.
- 2~ 120° C'SINK .22-.25 DIA.
- 3~ TAP 410 MIN. DEPTH USE HELI-COIL TAP #3FPB
- 4~ INSTALL ITEM ① 3/4 TO 1-1/2 PITCH BELOW SURFACE
- 5~ BREAK OFF DRIVING TANG

6	1	NT-139-SFI-20	HELI-COIL
---	---	---------------	-----------

SYM	DESCRIPTION	DATE	CH. NO.	DRAFTS	CHECKER	ENG. APP.
0	ORIGINAL RELEASE	5.16.64			JB	

REQ.	ITEM	PART NO.	F. BUDETTI	DESCRIPTION	SYMBOL
		1/2 THICK		THE TECHNICAL MATERIEL CORP. MAMARONECK, NEW YORK	
		STOCK SIZE			
		EPOXY		SUPPORT, HV. CONTACT	
		MATERIAL		CROWBAR BOARD	
		G-11	J.F. VITBO	aa	RAC
		NATURAL	02JB	3/16/64	PX-727 0
		FINISH & SPEC. NO.	ELEC. DES. APP.	MECH. DES. APP.	

UNLESS OTHERWISE SPECIFIED:
DIMENSIONS ARE IN INCHES
TOLERANCES ON
FRAC. ± 1/64 DEC. ± .005 ANGLES ± 1/2°

SCALE:
MAXIMUM ALLOWABLE TOLERANCES HAVE BEEN DETERMINED AND ANY DEVIATIONS WILL BE CAUSE FOR REJECTION.
REMOVE ALL BURRS AND SHARP EDGES

THE CONTENTS OF THIS DRAWING ARE THE EXCLUSIVE PROPERTY OF THE TECHNICAL MATERIEL CORP. ITS UNAUTHORIZED USE FOR REPRODUCTION IN WHOLE OR IN PART IS STRICTLY FORBIDDEN.

REQ. PER UNIT

USED ON

MODEL

ASS'Y. NO.

DATE

4

GPT-200K

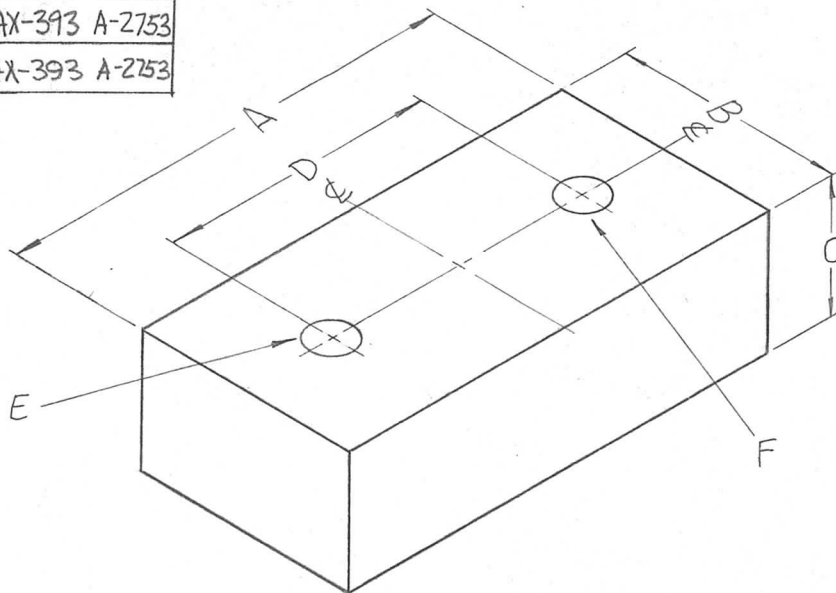
AX-393

3-12-63

PX-733

○

TMC NO.	DIMENSIONS						REQ.	SECTION
	A	B	C	D	E	F		
PX 733-1	2-1/2	1-1/4	5/8	1-1/2	13/64	13/64	4	AX-393 A-2753
PX 733-2	2-1/2	1-1/4	3/4	1-1/2	13/64	13/64	4	AX-393 A-2753

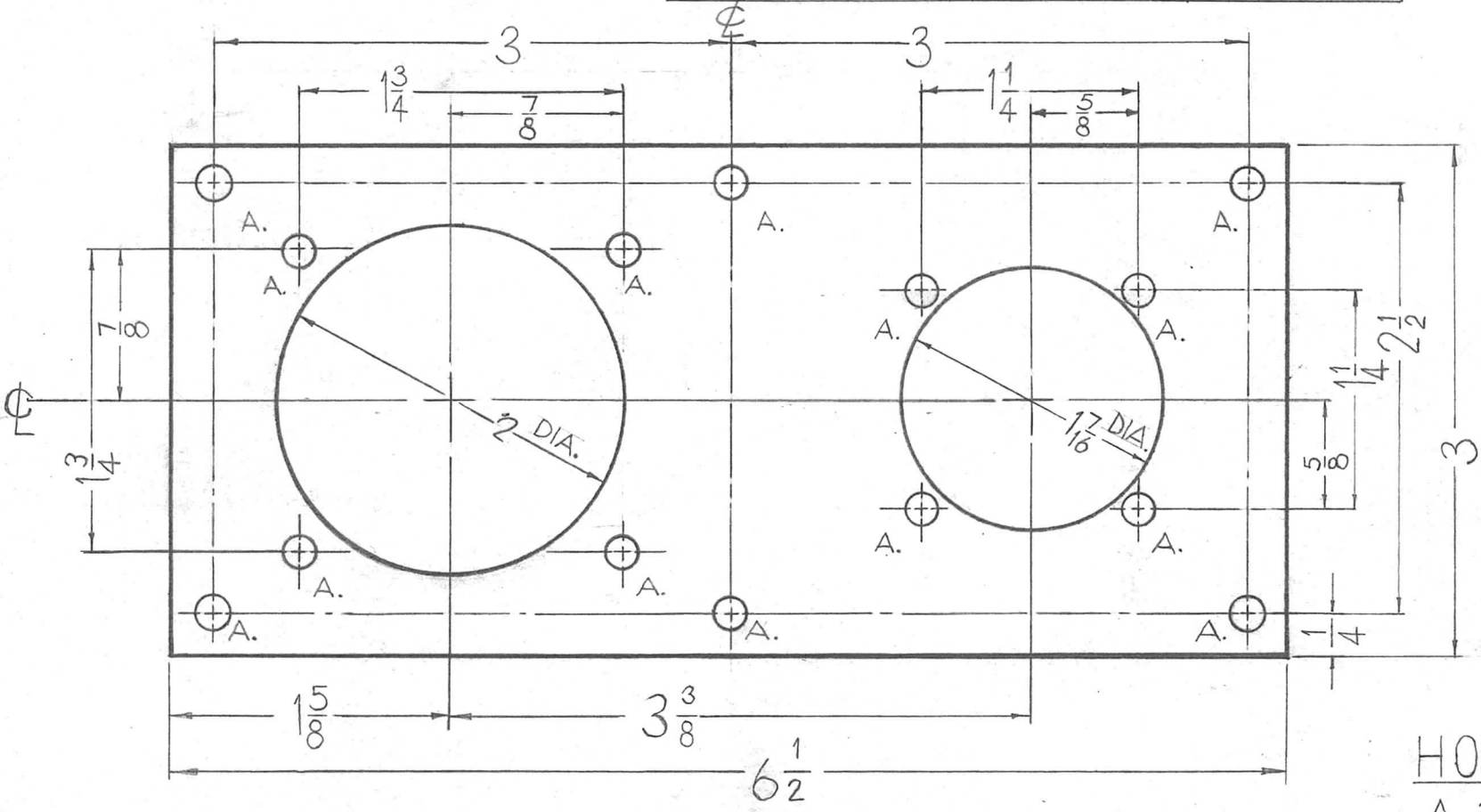


								REQ. ITEM	PART NO.	F. BUDETTI	DESCRIPTION	SYMBOL	
									G-7		THE TECHNICAL MATERIEL CORP. MAMARONECK, NEW YORK		
									STOCK SIZE		SPACER		
○	ORIGINAL RELEASE FOR PRODUCTION	5-13-64	○	A.M.					SILICONE GLASS				
SYM	DESCRIPTION	DATE	CH. NO.	DRAFTS	CHECKER	ENG. APP.			MATERIAL				
UNLESS OTHERWISE SPECIFIED DIMENSIONS ARE IN INCHES AND INCLUDE CHEMICALLY APPLIED OR PLATED FINISHES						SCALE			G7	SRG	aa	RAC	
DECIMALS .X ± .05 .XX ± .01 .XXX ± .005						FRACTIONS ± 1/64 ANGLES ± 0° 30'		CODE A	TYPE & TEMPER	HEAT TREAT. SPEC.	DRAWN	CHECKED	FINAL APPROVAL
TOLERANCES													
												PX-733	○
									FINISH & SPEC. NO.	ELEC. DES. APP.	MECH. DES. APP.		

THE CONTENTS OF THIS DRAWING ARE THE EXCLUSIVE PROPERTY OF THE TECHNICAL MATERIEL CORP. ITS UNAUTHORIZED USE OR REPRODUCTION IN WHOLE OR IN PART IS STRICTLY FORBIDDEN.

REQ. PER UNIT	USED ON		
	MODEL	ASS'Y. NO.	DATE
1	GPT-200K	AR-137	8-2-62
1	GPT-200K	AR-138	8-2-62

PX-741 0



HOLE'S REQ.
A. 11/64 DIA. 14

REF: TMC DWG LD-1245- & LD-1246-

SYM	DESCRIPTION	DATE	CH. NO.	DRAFTS	CHECKER	ENG. APP.	REQ. ITEM	PART NO.	DESCRIPTION	SYMBOL
							1/4 THICK		THE TECHNICAL MATERIEL CORP. MAMARONECK, NEW YORK	
							STOCK SIZE			
O	ORIGINAL RELEASE FOR PROD.	4-24-64			SRG		EPOXY		BOARD, CONNECTOR MTG.	
A	REDRAWN AND REVISED						MATERIAL		RELAY PANEL	
							G-11		J.F. VITRO	aa
							NATURAL S-113		2031B	dx
							FINISH & SPEC. NO.		ELEC. DES. APP.	MECH. DES. APP.
										PX-741 0

UNLESS OTHERWISE SPECIFIED:
DIMENSIONS ARE IN INCHES
TOLERANCES ON
FRAC. ± 1/64 DEC. ± .005 ANGLES ± 1/2°

SCALE: 1:1
CODE A
MAXIMUM ALLOWABLE TOLERANCES HAVE BEEN DETERMINED AND ANY DEVIATIONS WILL BE CAUSE FOR REJECTION.
REMOVE ALL BURRS AND SHARP EDGES

TYPE & TEMPER HEAT TREAT. SPEC. DRAWN CHECKED FINAL APPROVAL
ELEC. DES. APP. MECH. DES. APP.

THE CONTENTS OF THIS DRAWING ARE THE EXCLUSIVE PROPERTY OF THE TECHNICAL MATERIEL CORP. ITS UNAUTHORIZED USE FOR REPRODUCTION IN WHOLE OR IN PART IS STRICTLY FORBIDDEN.

REQ. PER UNIT

2

USED ON

MODEL

GPT-200K (AX-395)

ASS'Y. NO.

A-3258

DATE

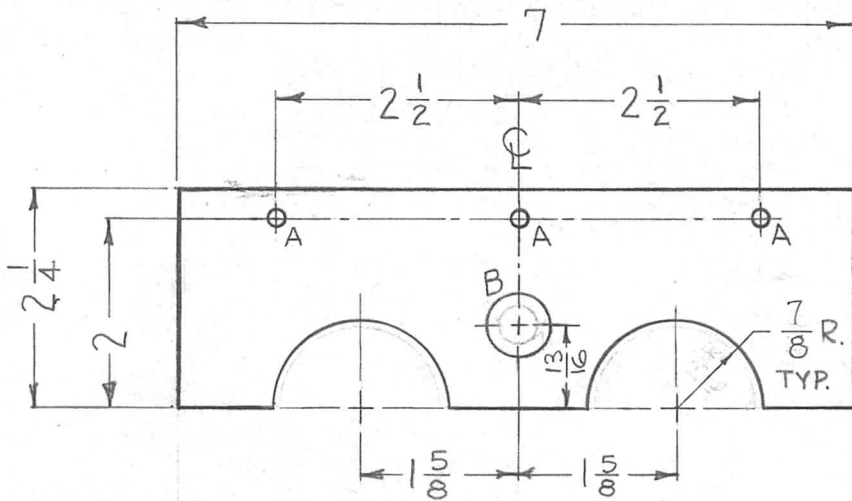
4-23-63

PX-744 0

HOLES

A ~ 11/64 DIA.
B ~ 5/8 DIA.

3 REQ.
1 REQ.

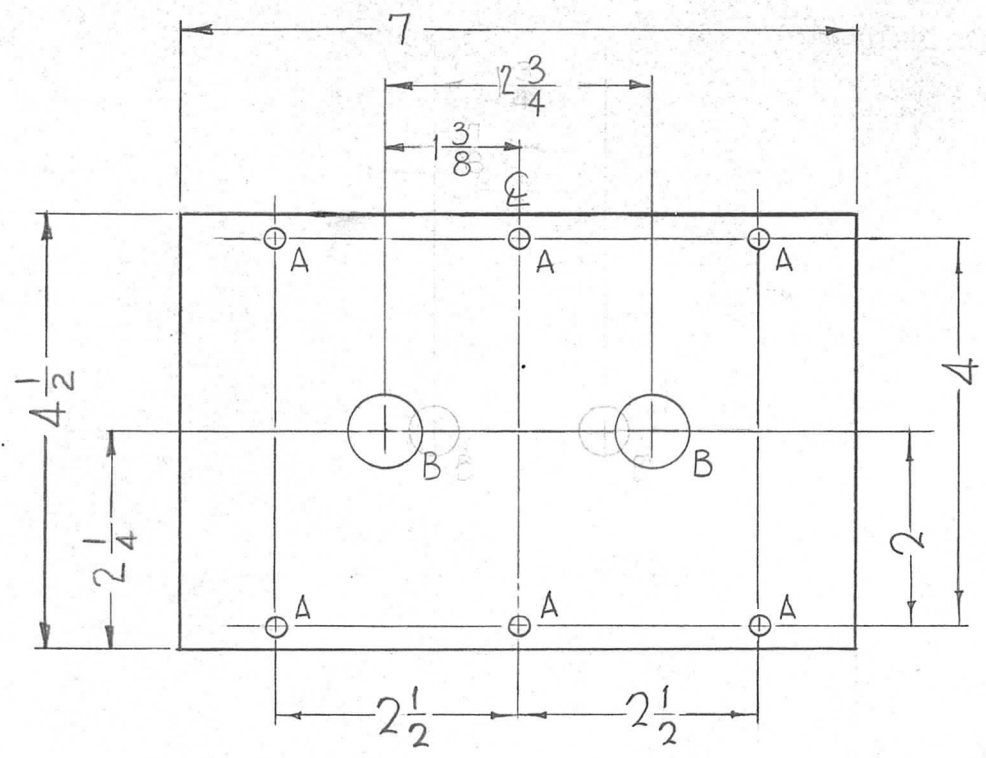


REQ.	ITEM	PART NO.	F. BUDETTI	DESCRIPTION	SYMBOL	
		1/8 THICK		THE TECHNICAL MATERIEL CORP. MAMARONECK, NEW YORK SUPPORT, CAPACITOR		
		STOCK SIZE				
		TEFLON				
		MATERIAL				
0	ORIG. RELEASE FOR PROD.	5-6-64	SRG			
X1	7/8 R WAS 3/4 R	10-24-63				
SYM	DESCRIPTION	DATE	CH. NO.	DRAFTS	CHECKER	ENG. APP.
UNLESS OTHERWISE SPECIFIED DIMENSIONS ARE IN INCHES AND INCLUDE CHEMICALLY APPLIED OR PLATED FINISHES		SCALE	1/2" = 1"			
DECIMALS .X ± .05 .XX ± .01 .XXX ± .005	TOLERANCES	FRACTIONS ± 1/64 ANGLES ± 0° 30'	CODE	A		
		TYPE & TEMPER	HEAT TREAT. SPEC.	DRAWN	CHECKED	FINAL APPROVAL
		NATURAL		<i>E. Green</i>	<i>aa</i>	<i>RWC</i>
		FINISH & SPEC. NO.	ELEC. DES. APP.	MECH. DES. APP.	PX-744 0	

THE CONTENTS OF THIS DRAWING ARE THE EXCLUSIVE PROPERTY OF THE TECHNICAL MATERIEL CORP. ITS UNAUTHORIZED USE FOR REPRODUCTION IN WHOLE OR IN PART IS STRICTLY FORBIDDEN.

REQ. PER UNIT	USED ON		
	MODEL	ASS'Y. NO.	DATE
1	GPT-200K (AX-395)	A-3258	4-23-63

PX-745 0



HOLES

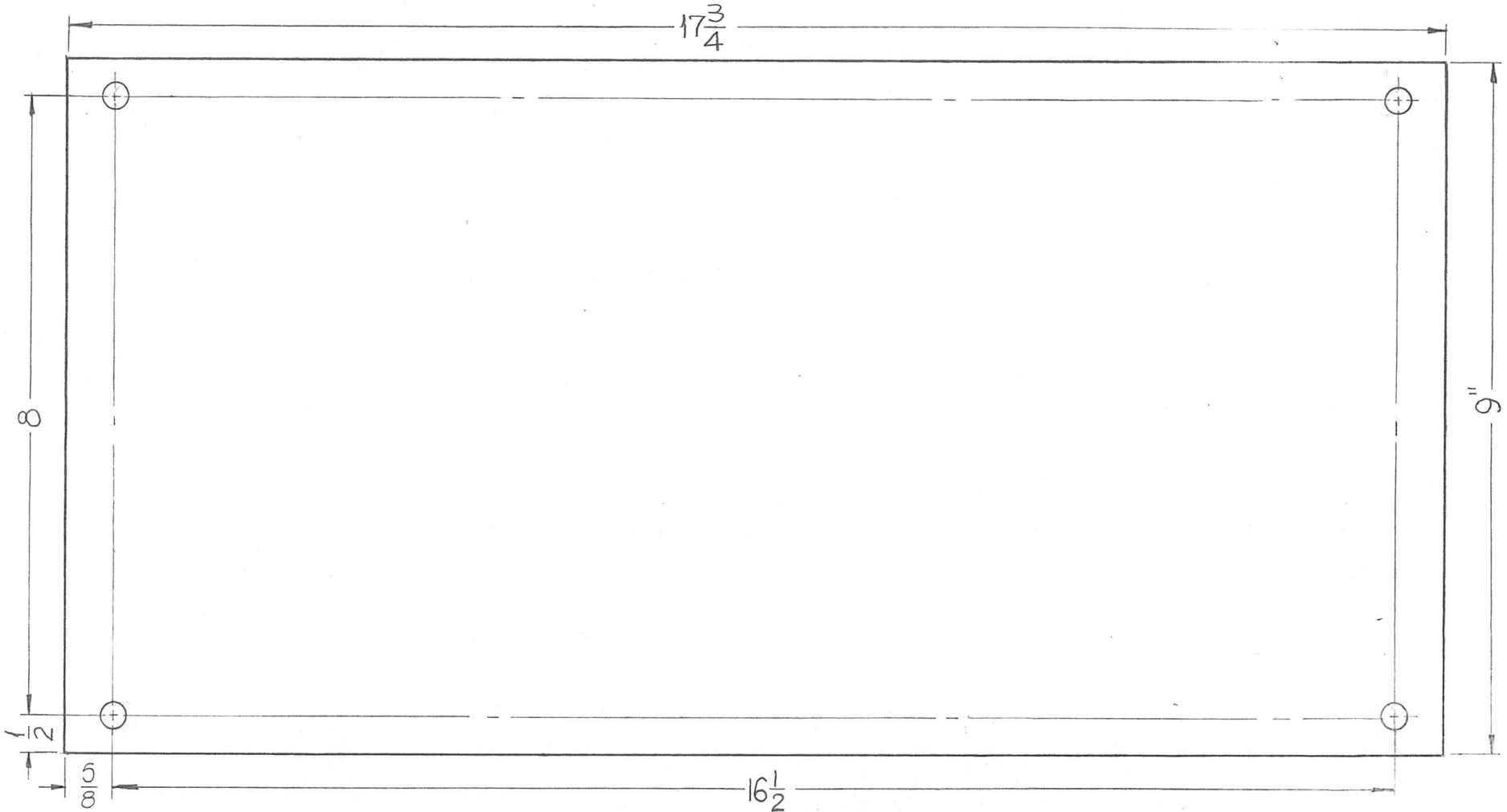
- A - 11/64 DIA. 6 REQ.
- B - 3/4 DIA. 2 REQ.

							REQ. ITEM	PART NO.	F. BUDETTI	DESCRIPTION	SYMBOL	
							1/8 THICK STOCK SIZE		THE TECHNICAL MATERIEL CORP. MAMARONECK, NEW YORK			
							TEFLON		SUPPORT, FEED-THRU			
							MATERIAL					
0	ORIG. RELEASE FOR PROD.	5-6-64		SRG								
SYM	DESCRIPTION	DATE	CH. NO.	DRAFTS	CHECKER	ENG. APP.						
UNLESS OTHERWISE SPECIFIED DIMENSIONS ARE IN INCHES AND INCLUDE CHEMICALLY APPLIED OR PLATED FINISHES		SCALE 1/2" = 1"							<i>G. Juncos</i>	QA	Roc	
DECIMALS .X ± .05 .XX ± .01 .XXX ± .005		FRACTIONS ± 1/64 ANGLES ± 0° 30'		CODE A				TYPE & TEMPER	HEAT TREAT. SPEC.	DRAWN	CHECKED	FINAL APPROVAL
TOLERANCES										<i>J. B. ...</i>		PX-745 0
							FINISH & SPEC. NO.		ELEC. DES. APP.	MECH. DES. APP.		

HOLES:

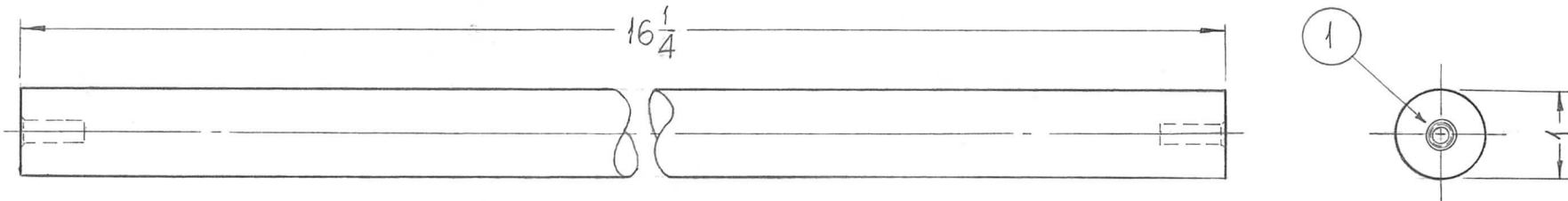
5/16 DIA. (4REQ.)

REQ. PER UNIT	USED ON			PX-746 ○
	MODEL	ASS'Y. NO.	DATE	
1	TR-179	A-3143	9-19-63	



REQ.	ITEM	PART NO.	DESCRIPTION				SYMBOL				
		1/4 THICK STOCK SIZE	THE TECHNICAL MATERIEL CORP. MAMARONECK, NEW YORK								
○	ORIGINAL RELEASE FOR PRODUCTION	G-7 SILICON GLASS	PLATE, TRANSFORMER TIEDOWN								
SYM	DESCRIPTION	DATE	CH. NO.	DRAFTS	CHECKER	ENG. APP.	MATERIAL				
	UNLESS OTHERWISE SPECIFIED DIMENSIONS ARE IN INCHES AND INCLUDE CHEMICALLY APPLIED OR PLATED FINISHES	SCALE	1/2" = 1"								
							TYPE & TEMPER	HEAT TREAT. SPEC.	DRAWN	CHECKED	FINAL APPROVAL
									SRG	aa	RJC
										12/7/63	PX-746 ○
DECIMALS	FRACTIONS	CODE	FINISH & SPEC. NO.				ELEC. DES. APP.	MECH. DES. APP.			
.X ± .05 .XX ± .01 .XXX ± .005	TOLERANCES ± 1/64 ANGLES ± 0° 30'	A									

REQ. PER UNIT	USED ON			PX-747	O
	MODEL	ASS'Y. NO.	DATE		
4	TR-179	A-3143	9-19-63		



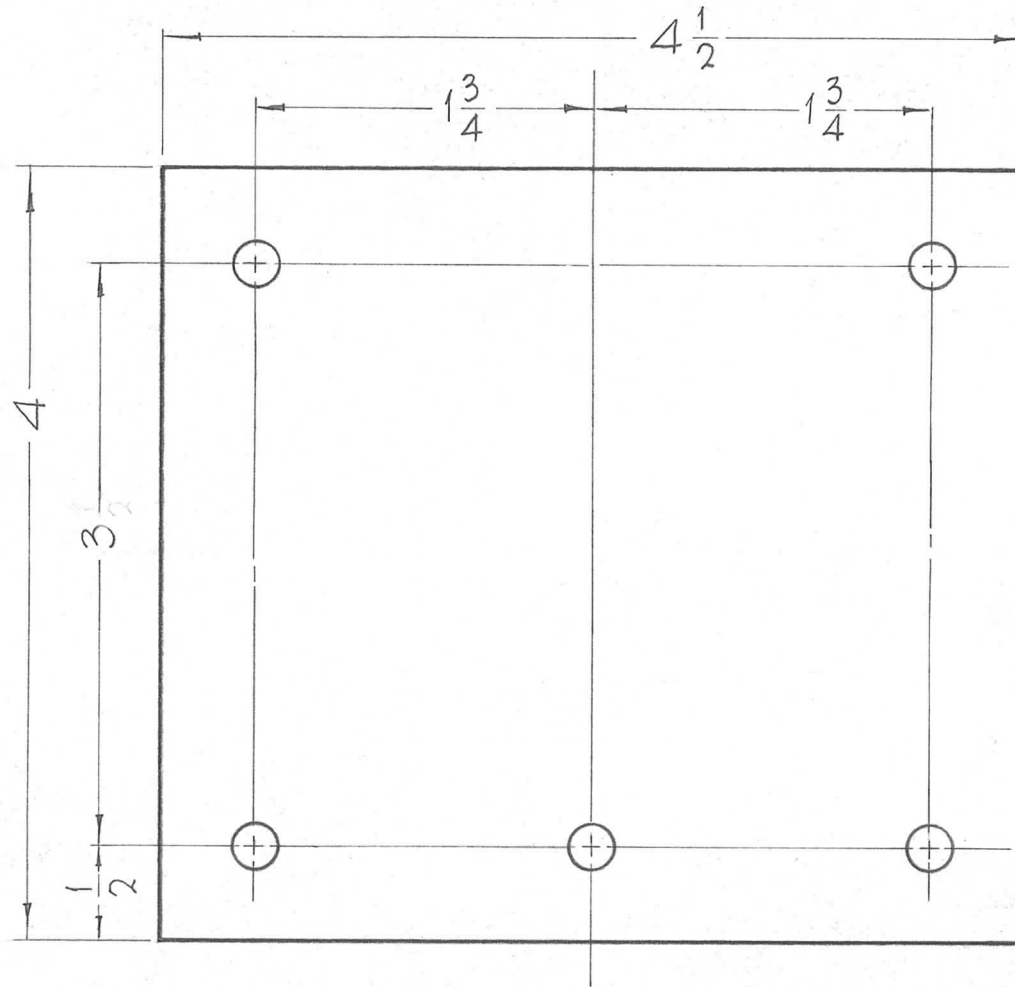
PROCEDURE:

- 1/4 - 20 x 1/2 LONG
- 1- DRILL 17/64 (.265) MIN. DEPTH .775
- 2- 120° C'SINK .30-.33
- 3- TAP .550 MIN. DEPTH. TAP #4CPA-H-3
- 4- INSTALL ITEM 1 3/4 TO 1-1/2 PITCH BELOW SURFACE
- 5- BREAK OFF DRIVING TANG.

						2	1	NT-139-SC420	HELI-COIL INSERT			
						REQ. ITEM		PART NO.	F. BUDETTI DESCRIPTION	SYMBOL		
						AS NOTED			THE TECHNICAL MATERIEL CORP. MAMARONECK. NEW YORK			
						STOCK SIZE			STANDOFF, TRANSFORMER			
O	ORIGINAL RELEASE FOR PRODUCTION	4-6-64	1	48		G-7 SILICONE GLASS						
SYM	DESCRIPTION	DATE	CH. NO.	DRAFTS	CHECKER	ENG. APP.	MATERIAL					
UNLESS OTHERWISE SPECIFIED DIMENSIONS ARE IN INCHES AND INCLUDE CHEMICALLY APPLIED OR PLATED FINISHES		SCALE						+	+	SRG	aa	Rye 4-8-64
		1/2" = 1"						TYPE & TEMPER	HEAT TREAT. SPEC.	DRAWN	CHECKED	FINAL APPROVAL
DECIMALS .X ± .05 .XX ± .01 .XXX ± .005		FRACTIONS ± 1/64 ANGLES ± 0° 30'		CODE A				+		2036	12/7/63	PX-747 O
TOLERANCES								FINISH & SPEC. NO.	ELEC. DES. APP.	MECH. DES. APP.		

THE CONTENTS OF THIS DRAWING ARE THE EXCLUSIVE PROPERTY OF THE TECHNICAL MATERIEL CORP. ITS UNAUTHORIZED USE FOR REPRODUCTION IN WHOLE OR IN PART IS STRICTLY FORBIDDEN.

REQ. PER UNIT	USED ON			PX-750	O
	MODEL	ASS'Y. NO.	DATE		
1	GPT-200K	AX-393	5 - 21 - 63		



HOLES

A - 15/64 DIA

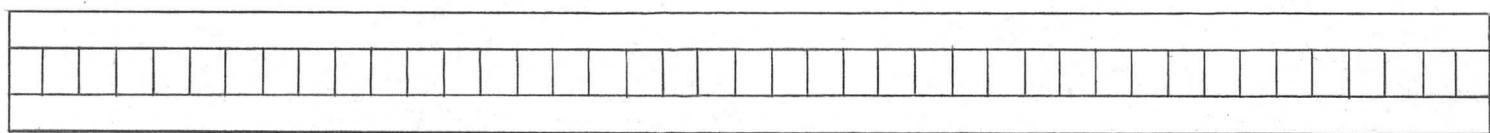
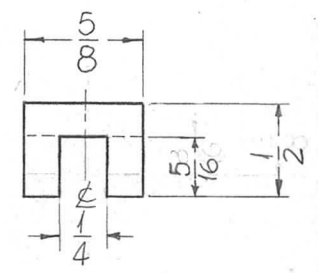
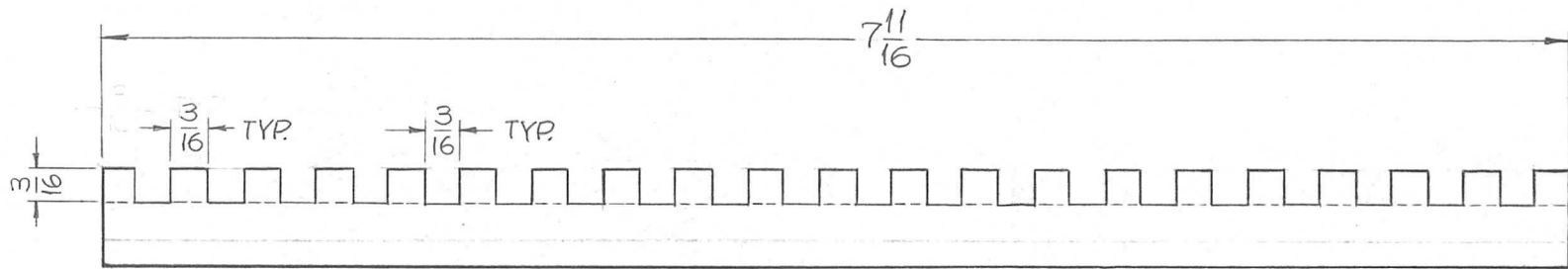
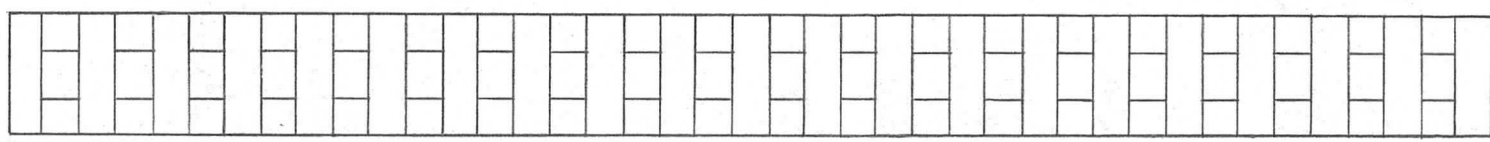
5REQ.

							REQ. ITEM	PART NO.	F. BUDETTI	DESCRIPTION	SYMBOL
								1/4 THICK	THE TECHNICAL MATERIEL CORP. MAMARONECK, NEW YORK		
								STOCK SIZE	BOARD, SUPPORT, CAPACITORS		
O	ORIGINAL RELEASE FOR PRODUCTION	5/13/64	O	A.M.				SILICONE GLASS			
SYM	DESCRIPTION	DATE	CH. NO.	DRAFTS	CHECKER	ENG. APP.		MATERIAL			
UNLESS OTHERWISE SPECIFIED DIMENSIONS ARE IN INCHES AND INCLUDE CHEMICALLY APPLIED OR PLATED FINISHES						SCALE	G-7		John C. Biele	aa	RJC
DECIMALS .X ± .05 .XX ± .01 .XXX ± .005						TOLERANCES	TYPE & TEMPER		DRAWN		CHECKED
FRACTIONS ± 1/64 ANGLES ± 0° 30'						CODE A	HEAT TREAT. SPEC.		MECH. DES. APP.		FINAL APPROVAL
							NATURAL		ELEC. DES. APP.		PX-750 O
							FINISH & SPEC. NO.				

THE CONTENTS OF THIS DRAWING ARE THE EXCLUSIVE PROPERTY OF THE TECHNICAL MATERIEL CORP. ITS UNAUTHORIZED USE FOR REPRODUCTION IN WHOLE OR IN PART IS STRICTLY FORBIDDEN.

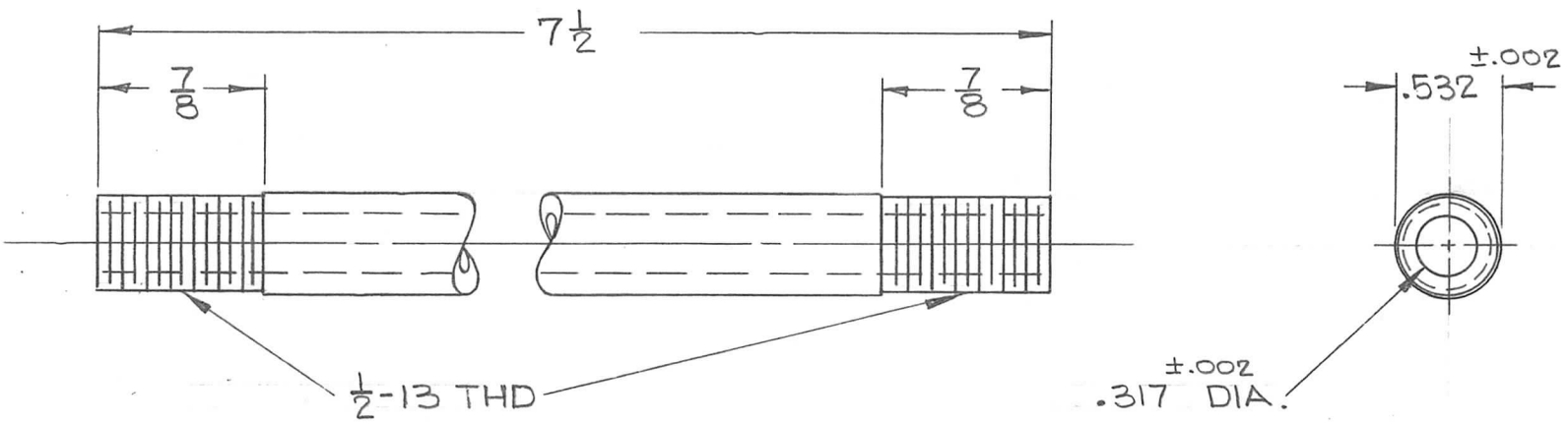
REQ. PER UNIT	USED ON		
	MODEL	ASS'Y. NO.	DATE
6	GPT-200K	AX-393	6-21-63

PX-751 ○



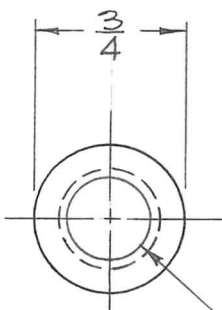
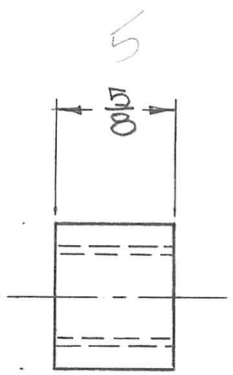
							REQ. ITEM	PART NO.	F. BUDETTI	DESCRIPTION	SYMBOL	
							1/2 THICK		THE TECHNICAL MATERIEL CORP.			
							STOCK SIZE		MAMARONECK, NEW YORK			
							TEFLON		SPACER, CAPACITORS			
							MATERIAL					
									SRG	aa	RSC	
UNLESS OTHERWISE SPECIFIED DIMENSIONS ARE IN INCHES AND INCLUDE CHEMICALLY APPLIED OR PLATED FINISHES							SCALE		DRAWN			
									CHECKED			
									FINAL APPROVAL			
DECIMALS .X ± .05 .XX ± .01 .XXX ± .005							FRACTIONS ± 1/64 ANGLES ± 0° 30'		TYPE & TEMPER		NATURAL	
TOLERANCES							CODE A		HEAT TREAT. SPEC.		ELEC. DES. APP.	
									MECH. DES. APP.		PX-751 ○	
							FINISH & SPEC. NO.					

REQ. PER UNIT	USED ON			PX-752	O
	MODEL	ASS'Y. NO.	DATE		
2	GPT-200K(AT-105)	AX-460	9-4-63		



							REQ. ITEM	PART NO.	F. BUDETTI	DESCRIPTION	SYMBOL
									THE TECHNICAL MATERIEL CORP. MAMARONECK, NEW YORK		
								STOCK SIZE	SLEEVE, INSULATING		
O	ORIGINAL RELEASE FOR PRODUCTION	5-13-64	O	A.M.				MATERIAL	TEFLON		
SYM	DESCRIPTION	DATE	CH. NO.	DRAFTS	CHECKER	ENG. APP.					
UNLESS OTHERWISE SPECIFIED DIMENSIONS ARE IN INCHES AND INCLUDE CHEMICALLY APPLIED OR PLATED FINISHES							SCALE				
							1:1				
							TYPE & TEMPER	HEAT TREAT. SPEC.	DRAWN	CHECKED	FINAL APPROVAL
									<i>R. Chiswell</i> 9-4-63	aa	<i>RAC</i>
DECIMALS .X ± .05 .XX ± .01 .XXX ± .005							FRACTIONS ± 1/64 ANGLES ± 0° 30'	CODE			
TOLERANCES							A				
							FINISH & SPEC. NO.	ELEC. DES. APP.	MECH. DES. APP.		PX-752 O

REQ. PER UNIT	USED ON			PX-753 O
	MODEL	ASS'Y. NO.	DATE	
4	GPT-200K (AF-105)	AX-450	9-4-63	



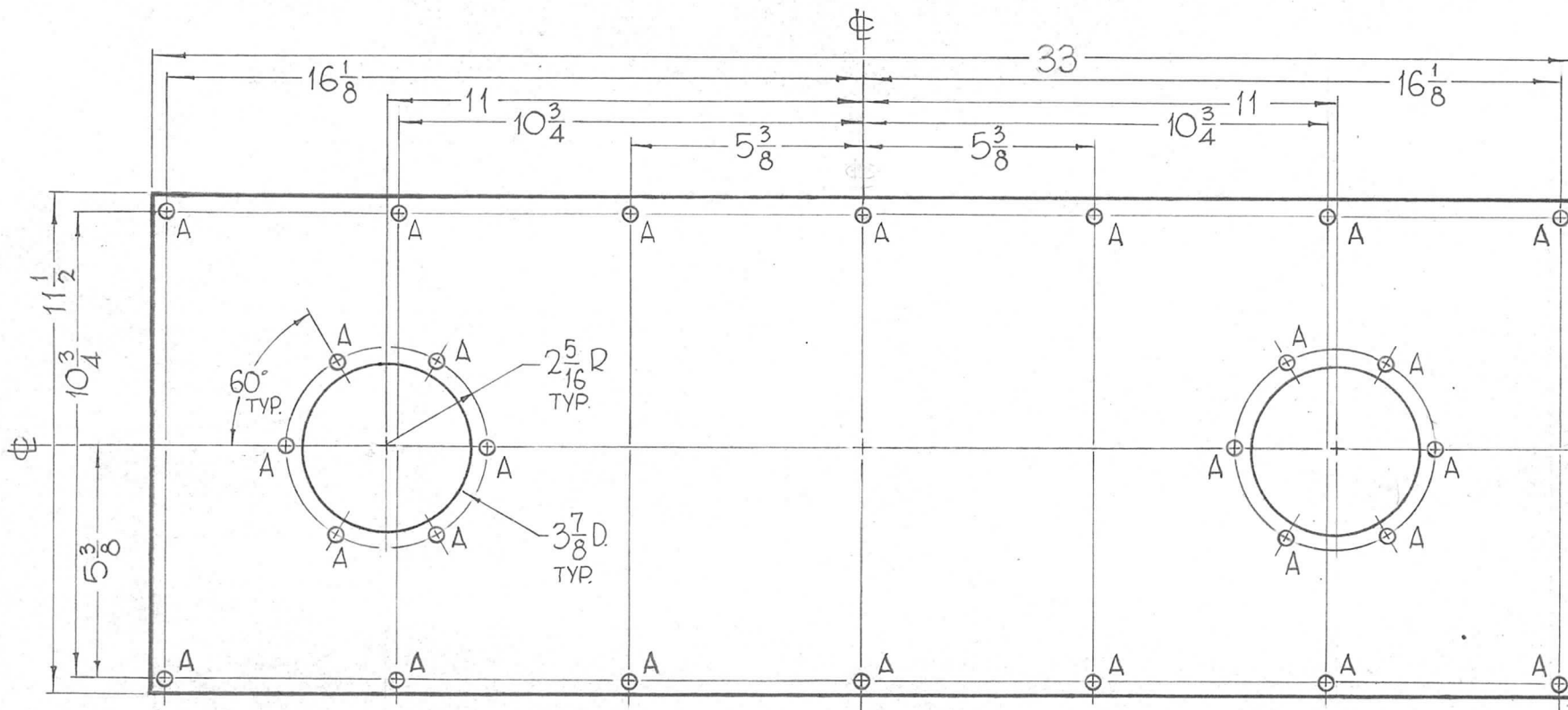
DRILL & TAP 1/2-13 THD THRU

REQ.	ITEM	PART NO.	F. BUDETTI DESCRIPTION				SYMBOL
			THE TECHNICAL MATERIEL CORP. MAMARONECK, NEW YORK				
			STOCK SIZE				
			TEFLON				
			MATERIAL				
			TYPE & TEMPER HEAT TREAT. SPEC.				
			DRAWN CHECKED				
			FINISH & SPEC. NO.				
			ELEC. DES. APP. MECH. DES. APP.				
0	ORIGINAL RELEASE FOR PRODUCTION	5-1364	0	A.M.			
SYM	DESCRIPTION	DATE	CH. NO.	DRAFTS	CHECKER	ENG. APP.	
UNLESS OTHERWISE SPECIFIED DIMENSIONS ARE IN INCHES AND INCLUDE CHEMICALLY APPLIED OR PLATED FINISHES		SCALE					
		1:1					
DECIMALS .X ± .05 .XX ± .01 .XXX ± .005	TOLERANCES	FRACTIONS ± 1/64 ANGLES ± 0° 30'	CODE				
			A				
				<i>F. Bugetti</i> 9-4-63 <i>aa</i> <i>RDC</i>			
				<i>aa</i> <i>12/7/63</i>			
				PX-753 O			

THE CONTENTS OF THIS DRAWING ARE THE EXCLUSIVE PROPERTY OF THE TECHNICAL MATERIEL CORP. ITS UNAUTHORIZED USE FOR REPRODUCTION IN WHOLE OR IN PART IS STRICTLY FORBIDDEN.

REQ. PER UNIT	USED ON			PX-755	O
	MODEL	ASS'Y. NO.	DATE		
1	GPT-200K (AT-105)	A-2763	6-3-63		

HOLES REQ.
A - 5/16 DIA 26



REF - TMC DWG. NO. LD-1264

							REQ. ITEM	PART NO.	F. BUDETTI	DESCRIPTION	SYMBOL
								1/4 THICK	THE TECHNICAL MATERIEL CORP. MAMARONECK, NEW YORK		
								STOCK SIZE	BOARD, MOUNTING, ASSY		
								SILICONE GLASS	ANTENNA FEED-THRU		
								MATERIAL			
								G-7	John C. Biele	aa	RWC
								TYPE & TEMPER	DRAWN	CHECKED	FINAL APPROVAL
								NATURAL	203	12/7/63	PX-755 O
								FINISH & SPEC. NO.	ELEC. DES. APP.	MECH. DES. APP.	

UNLESS OTHERWISE SPECIFIED DIMENSIONS ARE IN INCHES AND INCLUDE CHEMICALLY APPLIED OR PLATED FINISHES

DECIMALS
.X ± .05
.XX ± .01
.XXX ± .005

FRACTIONS
± 1/64
ANGLES
± 0° 30'

TOLERANCES

SCALE
1/4 (DO NOT SCALE)

CODE
A

THE CONTENTS OF THIS DRAWING ARE THE EXCLUSIVE PROPERTY OF THE TECHNICAL MATERIEL CORP. ITS UNAUTHORIZED USE FOR REPRODUCTION IN WHOLE OR IN PART IS STRICTLY FORBIDDEN.

REQ. PER UNIT

1

MODEL

GPT-200 K

USED ON

ASS'Y. NO.

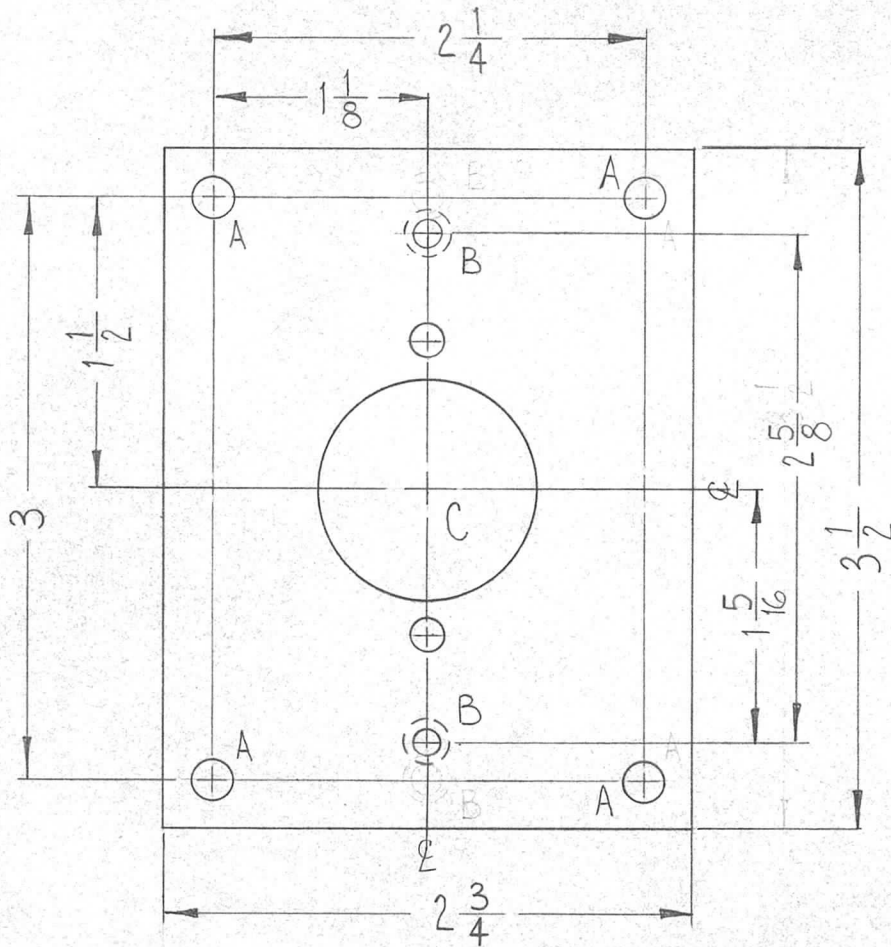
AP-108

DATE

6-12-63

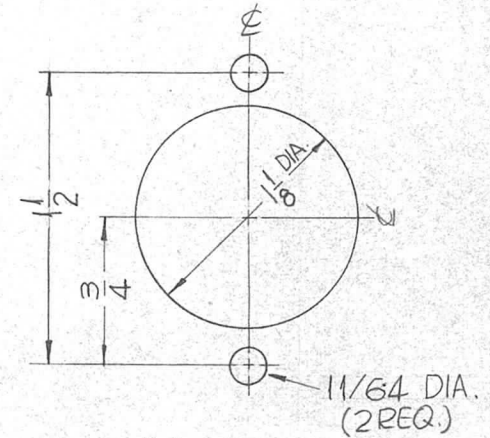
PX-756

Ø



1 MOUNT ITEM 1 IN ALL "B" HOLES AFTER FINISHING.

HOLE	DESCRIPTION	REQ.
A	13/64 DIA.	4
B	.189 DIA.	2
C	SEE DETAIL	



"C" - DETAIL (1REQ.)

2	1	TE-108-8	STANDOFF, RIVET TYPE	B
REQ.	ITEM	PART NO.	F. BUDETTI DESCRIPTION	SYMBOL
		1/8	THE TECHNICAL MATERIEL CORP. MAMARONECK, NEW YORK	
		STOCK SIZE	BOARD, RELAY MTG.	
		PHENOLIC		
		MATERIAL		
		XXXXP	WA. FRANCO	JCB Rce
		TYPE & TEMPER	DRAWN	CHECKED
		HEAT TREAT. SPEC.		FINAL APPROVAL
		NATURAL S113	DOB	PX-756
		FINISH & SPEC. NO.	ELEC. DES. APP.	MECH. DES. APP.

Ø ORIGINAL RELEASE FOR PRODUCTION		3-3-64	A.M.			
SYM	DESCRIPTION	DATE	CH. NO.	DRAFTS	CHECKER	ENG. APP.
UNLESS OTHERWISE SPECIFIED DIMENSIONS ARE IN INCHES AND INCLUDE CHEMICALLY APPLIED OR PLATED FINISHES		SCALE	1:1			
DECIMALS .X ± .05 .XX ± .01 .XXX ± .005	TOLERANCES	FRACTIONS ± 1/64 ANGLES ± 0° 30'	CODE	A		

THE CONTENTS OF THIS DRAWING ARE THE EXCLUSIVE PROPERTY OF THE TECHNICAL MATERIEL CORP. ITS UNAUTHORIZED USE FOR REPRODUCTION IN WHOLE OR IN PART IS STRICTLY FORBIDDEN.

REQ. PER UNIT

1

MODEL

GPT-200K

USED ON

ASS'Y. NO.

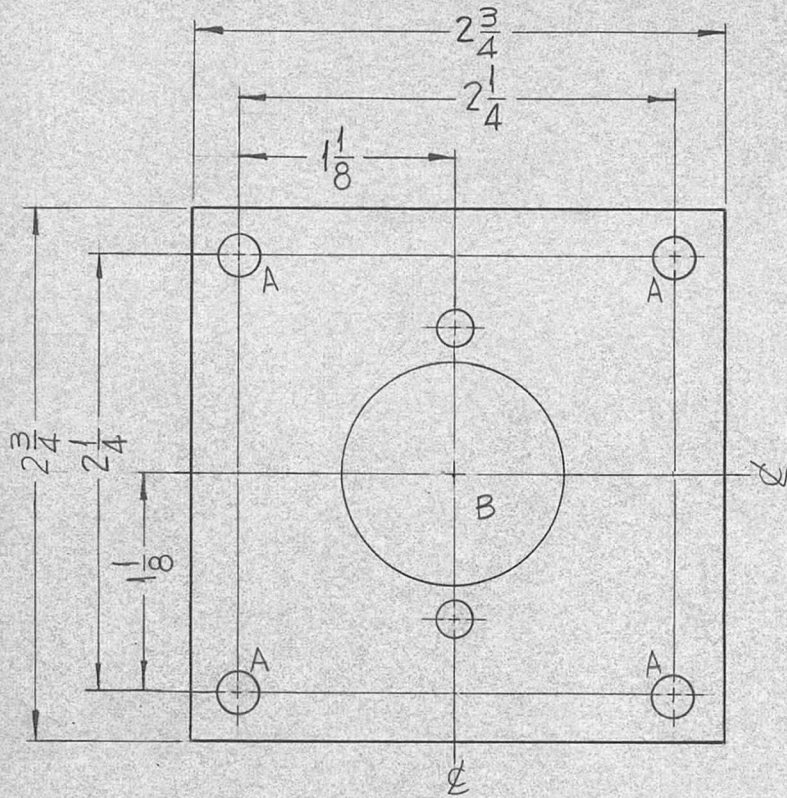
AP-108

DATE

6-12-63

PX-757

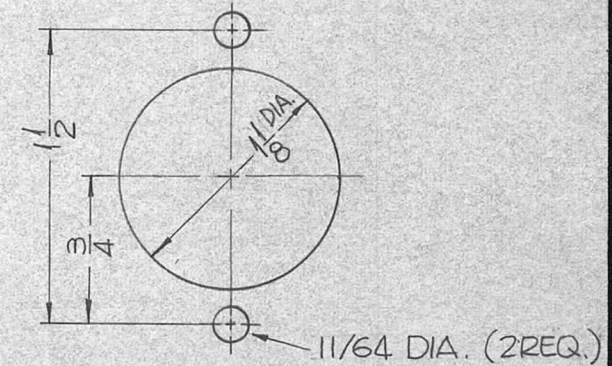
0



HOLES:

A ~ 13/64 DIA. (4 REQ.)

B ~ SEE DETAIL



B-DETAIL
(1 REQ.)

FINISH - NATURAL,
FUNGUS PROOFING PER
TMC SPECIFICATION S-113

REQ.	ITEM	PART NO.	F. BUDETTI	DESCRIPTION	SYMBOL	
		1/8 THICK		THE TECHNICAL MATERIEL CORP. MAMARONECK, NEW YORK		
		STOCK SIZE				
		PHENOLIC			BOARD, TUBE MTG. (1 REQ.)	
				MATERIAL		
		XXX P	SRG	JCS	KWC	
		TYPE & TEMPER	HEAT TREAT. SPEC.	DRAWN	CHECKED	FINAL APPROVAL
		SEE S-113 NOTE		JRB	see below	PX-757
		FINISH & SPEC. NO.	ELEC. DES. APP.	MECH. DES. APP.		0

ORIGINAL RELEASE FOR PRODUCTION 3-3-64 A.M.

UNLESS OTHERWISE SPECIFIED DIMENSIONS ARE IN INCHES AND INCLUDE CHEMICALLY APPLIED OR PLATED FINISHES

SCALE 1:1

DECIMALS .X ± .05 .XX ± .01 .XXX ± .005

FRACTIONS ± 1/64 ANGLES ± 0° 30'

TOLERANCES

CODE A

THE CONTENTS OF THIS DRAWING ARE THE EXCLUSIVE PROPERTY OF THE TECHNICAL MATERIEL CORP. ITS UNAUTHORIZED USE FOR REPRODUCTION IN WHOLE OR IN PART IS STRICTLY FORBIDDEN.

REQ. PER UNIT

2

GPT-200K(AK-395)

USED ON

MODEL

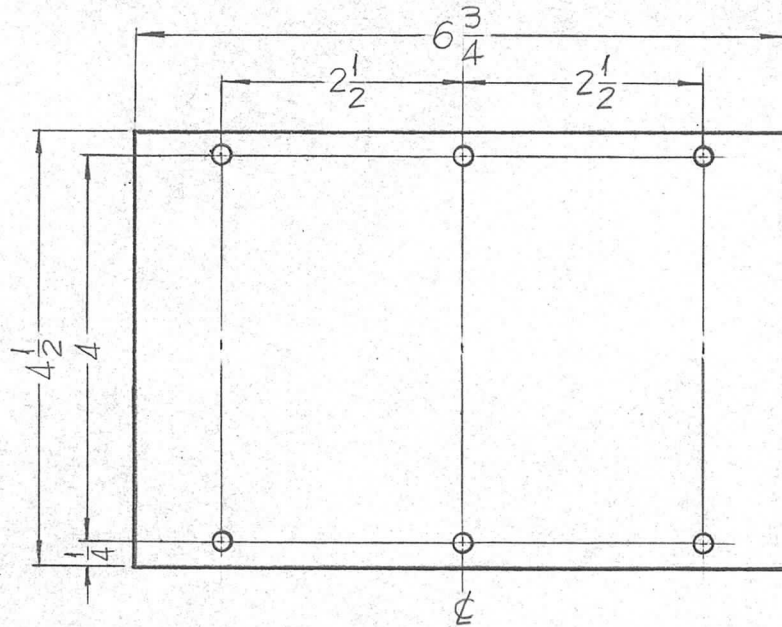
ASS'Y. NO.

DATE

A-3258

6-5-63

PX-758 0



HOLES:

11/64 DIA. ————— 6 REQ.

REQ.	ITEM	PART NO.	F. BUDETTI			DESCRIPTION	SYMBOL
		1/8 THICK	THE TECHNICAL MATERIEL CORP.				
		STOCK SIZE	MAMARONECK, NEW YORK				
0	ORIG. RELEASE FOR PROD.	5-6-64	SRG	INSULATOR DECOUPLER BOX			
SYM	DESCRIPTION	DATE	CH. NO.	DRAFTS	CHECKER	ENG. APP.	
UNLESS OTHERWISE SPECIFIED DIMENSIONS ARE IN INCHES AND INCLUDE CHEMICALLY APPLIED OR PLATED FINISHES		SCALE	1/2"=1"				
DECIMALS .X ± .05 .XX ± .01 .XXX ± .005	TOLERANCES	FRACTIONS ± 1/64 ANGLES ± 0° 30'	CODE	A			
NATURAL		TYPE & TEMPER	HEAT TREAT. SPEC.	DRAWN	CHECKED	FINAL APPROVAL	
FINISH & SPEC. NO.		ELEC. DES. APP.		MECH. DES. APP.		PX-758 0	

THE CONTENTS OF THIS DRAWING ARE THE EXCLUSIVE PROPERTY OF THE TECHNICAL MATERIEL CORP. ITS UNAUTHORIZED USE FOR REPRODUCTION IN WHOLE OR IN PART IS STRICTLY FORBIDDEN.

REQ. PER UNIT

4

MODEL

GPT-200K

USED ON

ASS'Y. NO.

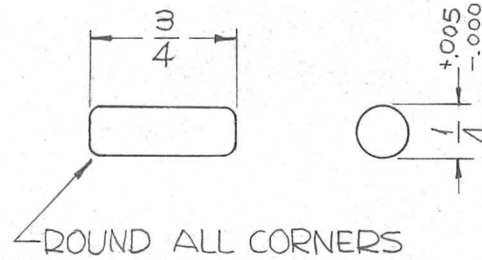
A-3187

DATE

6-10-63

PX-759

0



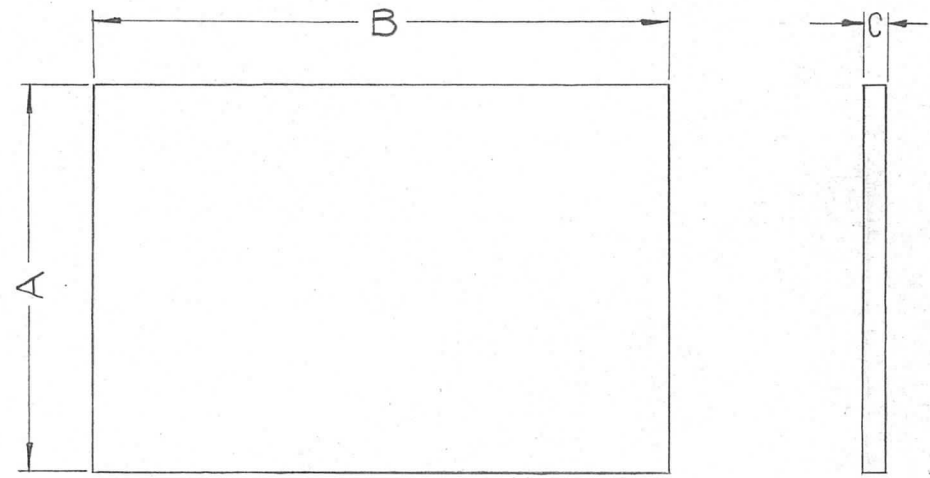
							REQ.	ITEM	PART NO.	F. BUDETTI	DESCRIPTION	SYMBOL
										THE TECHNICAL MATERIEL CORP. MAMARONECK, NEW YORK		
							STOCK SIZE			PIN, PHENOLIC		
0	ORIGINAL RELEASE	5.16.64		WJB			PHENOLIC					
SYM	DESCRIPTION	DATE	CH. NO.	DRAFTS	CHECKER	ENG. APP.	MATERIAL					
UNLESS OTHERWISE SPECIFIED DIMENSIONS ARE IN INCHES AND INCLUDE CHEMICALLY APPLIED OR PLATED FINISHES		SCALE								SRG	aa	AS Rde
DECIMALS .X ± .05 .XX ± .01 .XXX ± .005		FRACTIONS ± 1/64 ANGLES ± 0° 30'		CODE				TYPE & TEMPER	HEAT TREAT. SPEC.	DRAWN	CHECKED	FINAL APPROVAL
TOLERANCES								NATURAL		SRG	aa 2/10/64	PX-759 0
								FINISH & SPEC. NO.	ELEC. DES. APP.	MECH. DES. APP.		

THE CONTENTS OF THIS DRAWING ARE THE EXCLUSIVE PROPERTY OF THE TECHNICAL MATERIEL CORP. ITS UNAUTHORIZED USE FOR REPRODUCTION IN WHOLE OR IN PART IS STRICTLY FORBIDDEN.

REQ. PER UNIT	USED ON		
	MODEL	ASS'Y. NO.	DATE
	TR-179	A-3143	6-25-63

PX-761 0

TMC NO.	DIMENSION		
	A	B	C
PX-761-1	10-1/2"	8 FT.	.007*
PX-761-2	10-1/2"	4 FT.	.007*



*.005 THICK CONSTRUCTION ISO-MICA, WITH .002 GLASS CLOTH BACKING.

REF-MINNESOTA MINING AND MFG. CO. (285-X)

REQ.	ITEM	PART NO.	F. BUDETTI	DESCRIPTION	SYMBOL
				THE TECHNICAL MATERIEL CORP. MAMARONECK, NEW YORK	
				INSULATION	
				HIGH TEMPERATURE	
			SRG	aa	4-8-64
				DRAWN	CHECKED
				FINAL APPROVAL	
				PX-761	0
				ELEC. DES. APP.	MECH. DES. APP.

UNLESS OTHERWISE SPECIFIED DIMENSIONS ARE IN INCHES AND INCLUDE CHEMICALLY APPLIED OR PLATED FINISHES

DECIMALS
.X ± .05
.XX ± .01
.XXX ± .005

FRACTIONS
± 1/64
ANGLES
± 0° 30'

TOLERANCES

CODE
C

SCALE

DATE

CH. NO.

DRAFTS

CHECKER

ENG. APP.

STOCK SIZE

ISO-MICA

MATERIAL

TYPE & TEMPER

HEAT TREAT. SPEC.

FINISH & SPEC. NO.

THE CONTENTS OF THIS DRAWING ARE THE EXCLUSIVE PROPERTY OF THE TECHNICAL MATERIEL CORP. ITS UNAUTHORIZED USE FOR REPRODUCTION IN WHOLE OR IN PART IS STRICTLY FORBIDDEN.

REQ. PER UNIT

2

MODEL

GPT-200K

USED ON

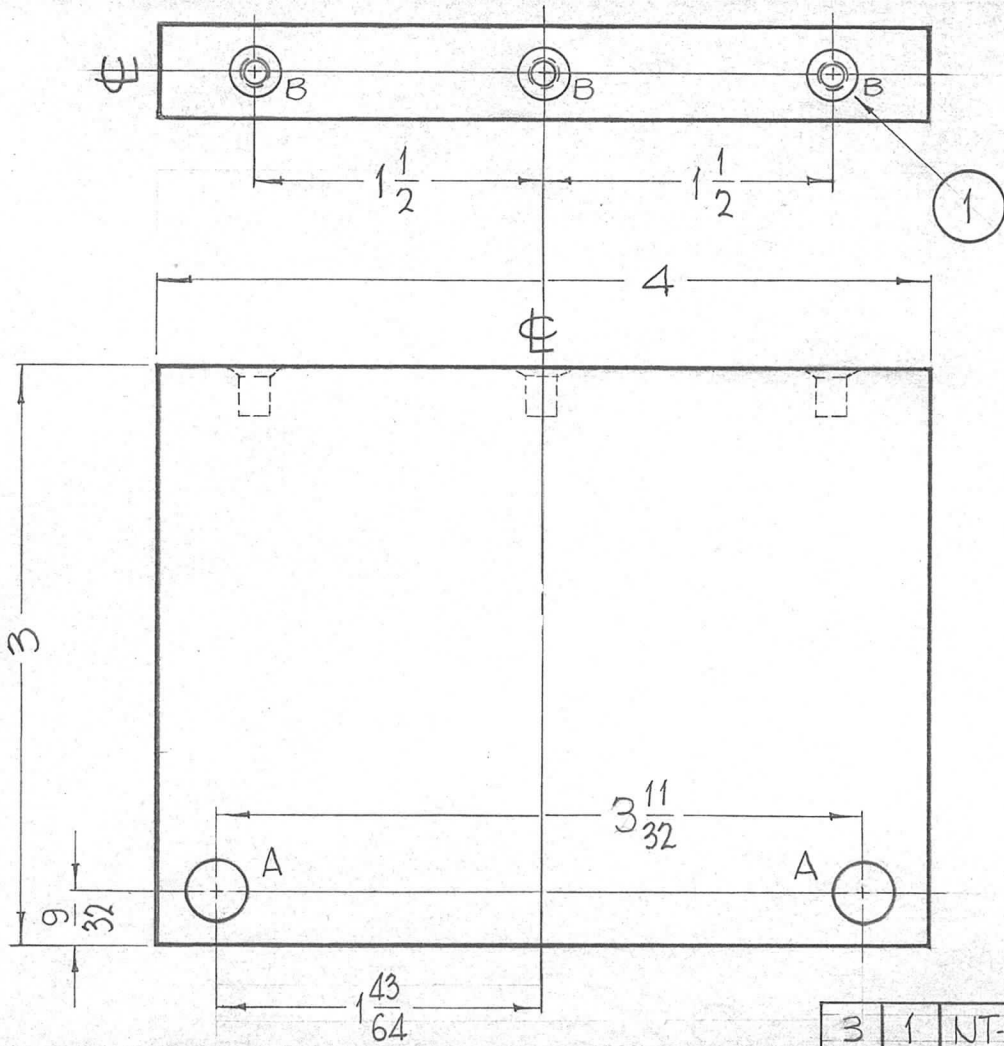
ASS'Y. NO.

AS-124

DATE

6-30-63

PX-763 0



HOLES REQ

A - 5/16 DIA. 2

B - SEE PROCEDURE FOR MTG. ITEM NO. 1 3

PROCEDURE FOR MTG. ITEM NO. 1 INTO "B" HOLES.

1 - DRILL 13/64 (.203) TO .552 MIN DEPTH.

2 - 120° C'SINK .220 - .250 DIA.

3 - TAP .410 MIN. DEPTH USE HELI-COIL TAP NO. 3FPB.

4 - INSTALL ITEM NO. 1, 3/4 TO 1-1/2 PITCH BELOW SURFACE.

5 - BREAK OFF DRIVING TANG.

3	1	NT-139-SFI-20	INSERT, THREADED	
REQ.	ITEM	PART NO.	F. BUDETTI DESCRIPTION	SYMBOL
		1/2 THICK	THE TECHNICAL MATERIEL CORP. MAMARONECK, NEW YORK	
		STOCK SIZE		
		SILICONE GLASS	BOARD, CAPACITOR MTG.	
		MATERIAL		
		G-7	John C. Biele	aa
		TYPE & TEMPER	DRAWN	CHECKED
		NATURAL	DR	me 2/4/64
		FINISH & SPEC. NO.	ELEC. DES. APP.	MECH. DES. APP.
				PX-763 0

0	ORIG. RELEASE FOR PROD.	5-16-64		SRG		
SYM	DESCRIPTION	DATE	CH. NO.	DRAFTS	CHECKER	ENG. APP.
UNLESS OTHERWISE SPECIFIED DIMENSIONS ARE IN INCHES AND INCLUDE CHEMICALLY APPLIED OR PLATED FINISHES		SCALE		1" = 1"		
DECIMALS	TOLERANCES	FRACTIONS	CODE			
.X ± .05		± 1/64				
.XX ± .01		ANGLES				
.XXX ± .005		± 0° 30'				

THE CONTENTS OF THIS DRAWING ARE THE EXCLUSIVE PROPERTY OF THE TECHNICAL MATERIEL CORP. ITS UNAUTHORIZED USE FOR REPRODUCTION IN WHOLE OR IN PART IS STRICTLY FORBIDDEN.

REQ. PER UNIT

USED ON

MODEL

ASS'Y. NO.

DATE

1

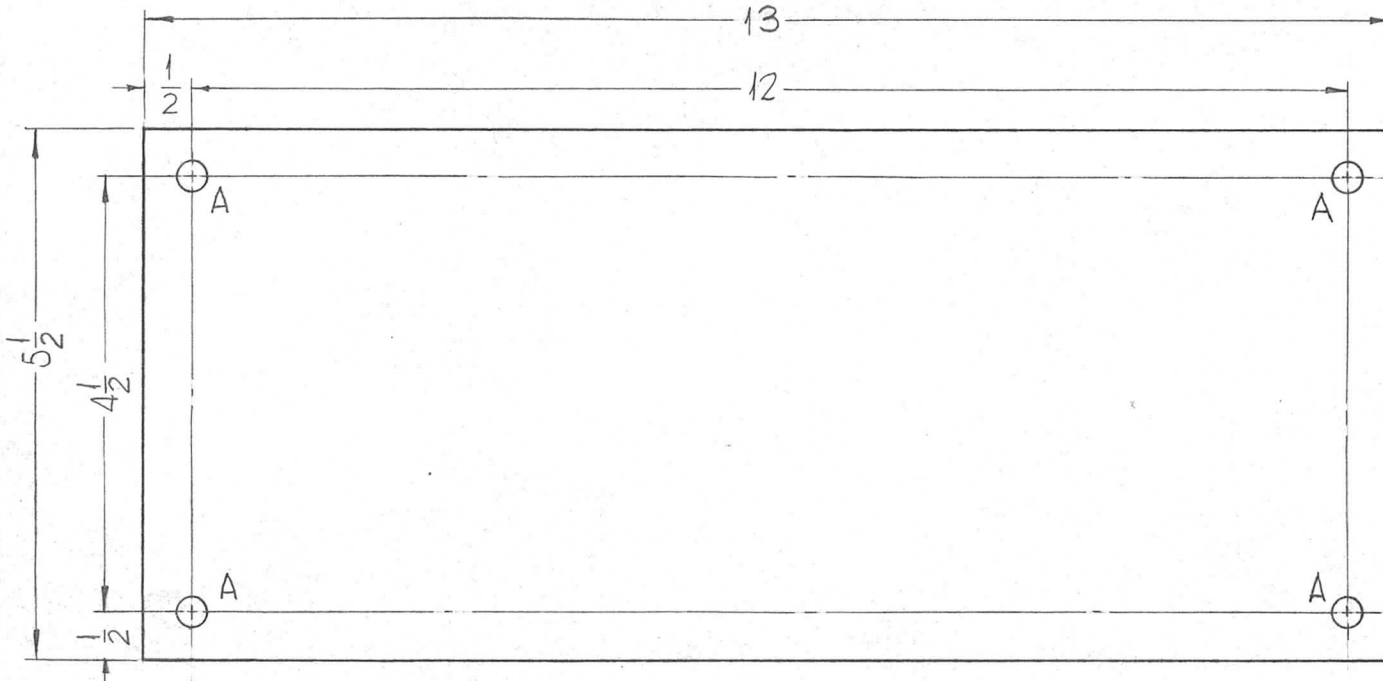
GPT-2002

A-3139

7-1-63

PX-764

0



HOLES:
A - 9/32 DIA. (4REQ.)

REQ.	ITEM	PART NO.	F. BUDETTI	DESCRIPTION	SYMBOL			
		1/4 THICK		THE TECHNICAL MATERIEL CORP.				
		STOCK SIZE		MAMARONECK, NEW YORK				
○	ORIGINAL RELEASE FOR PRODUCTION	3-2-64		BOARD, XFMR TIE DOWN				
		SILICONE GLASS						
SYM	DESCRIPTION	DATE	CH. NO.	DRAFTS	CHECKER	ENG. APP.		
	UNLESS OTHERWISE SPECIFIED DIMENSIONS ARE IN INCHES AND INCLUDE CHEMICALLY APPLIED OR PLATED FINISHES	SCALE	1/2					
DECIMALS	TOLERANCES	FRACTIONS	CODE					
.X ± .05		± 1/64	A					
.XX ± .01		ANGLES						
.XXX ± .005		± 0° 30'						
		G-7			SRG	aa gcb	RJC	
		NATURAL			OBIB	huc 2/24	PX-764	0
		FINISH & SPEC. NO.			ELEC. DES. APP.	MECH. DES. APP.		

THE CONTENTS OF THIS DRAWING ARE THE EXCLUSIVE PROPERTY OF THE TECHNICAL MATERIEL CORP. ITS UNAUTHORIZED USE FOR REPRODUCTION IN WHOLE OR IN PART IS STRICTLY FORBIDDEN.

REQ. PER UNIT

USED ON

MODEL

ASS'Y. NO.

DATE

1

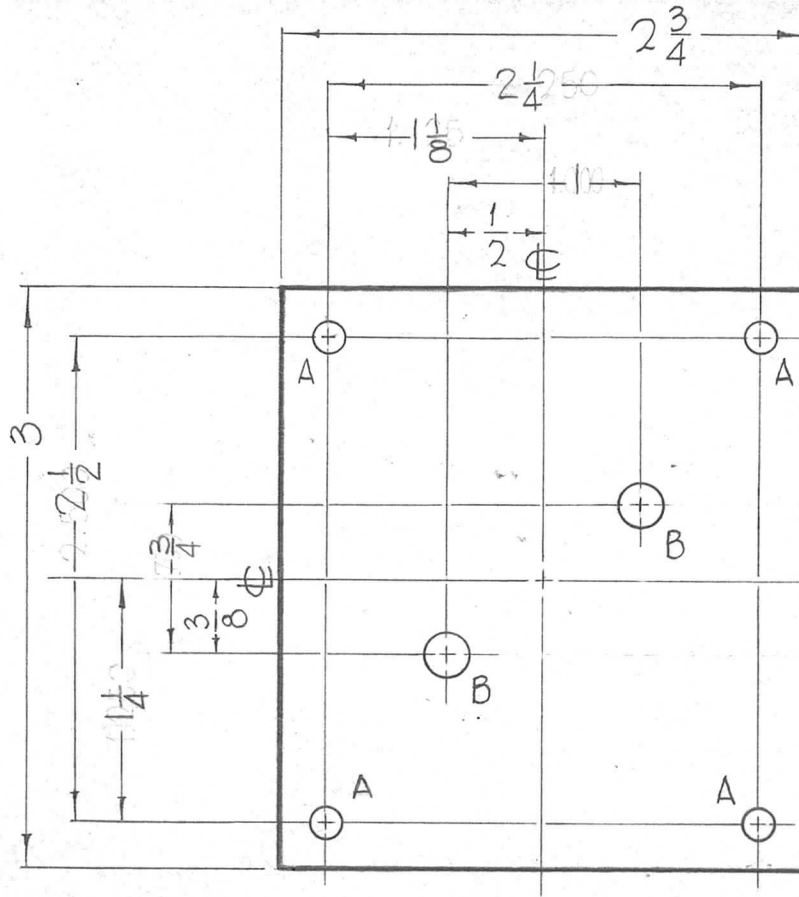
GPT-200K

AT-105

7-2-63

PX-765

0



HOLES

REQ.

A - 11/64 DIA.

4

B - 15/64 DIA.

2

REQ. ITEM

PART NO.

F. BUDETTI DESCRIPTION

SYMBOL

1/8 THICK

STOCK SIZE

THE TECHNICAL MATERIEL CORP.
MAMARONECK, NEW YORK

EPOXY

BOARD, CONTACT MTG.

MATERIAL

XG-11

John C. Biede

RJC

TYPE & TEMPER

HEAT TREAT. SPEC.

DRAWN

CHECKED

FINAL APPROVAL

NATURAL

OR B

12/7/63

PX-765 0

FINISH & SPEC. NO.

ELEC. DES. APP.

MECH. DES. APP.

UNLESS OTHERWISE SPECIFIED DIMENSIONS ARE IN INCHES AND INCLUDE CHEMICALLY APPLIED OR PLATED FINISHES

SCALE

1" = 1"

DECIMALS
.X ± .05
.XX ± .01
.XXX ± .005

TOLERANCES

FRACTIONS
± 1/64
ANGLES
± 0° 30'

CODE

A

ORIGINAL RELEASE FOR PRODUCTION

DATE

5-12-64

CH. NO.

0

AM

DRAFTS

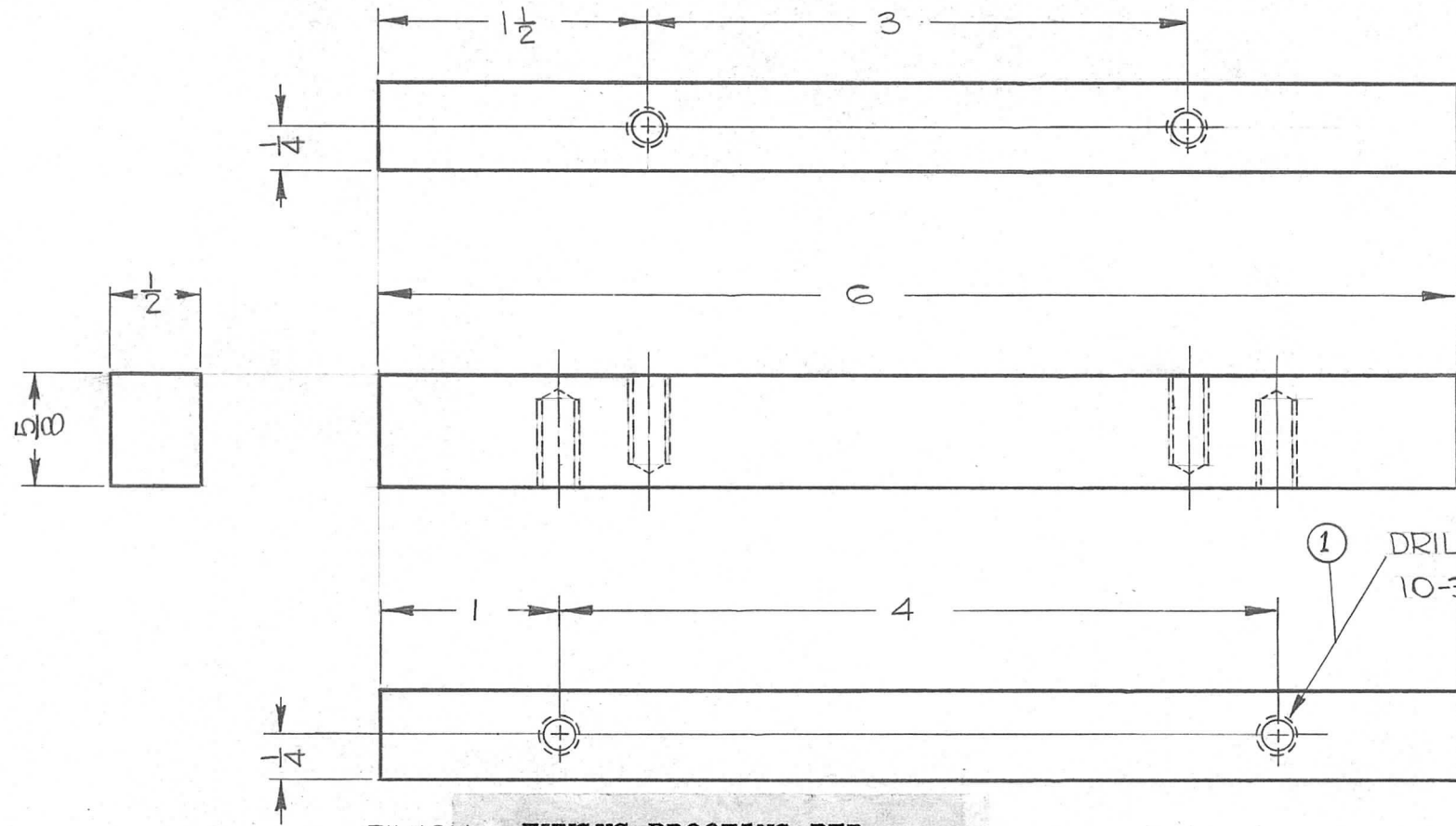
CHECKER

ENG. APP.

THE CONTENTS OF THIS DRAWING ARE THE EXCLUSIVE PROPERTY OF THE TECHNICAL MATERIEL CORP. ITS UNAUTHORIZED USE FOR REPRODUCTION IN WHOLE OR IN PART IS STRICTLY FORBIDDEN.

REQ. PER UNIT	USED ON		
	MODEL	ASS'Y. NO.	DATE
2	GPT-200K (AX-394)	A-3259	7-25-63

PX-767 A



FINISH ~ FUNGUS PROOFING PER TMC SPECIFICATION S-113

							4	1	NT139SF1-15	INSERT, SCREW THREAD						
							REQ. ITEM	PART NO.		F. BUDETTI	DESCRIPTION	SYMBOL				
							1/2 x 5/8		THE TECHNICAL MATERIEL CORP. MAMARONECK, NEW YORK							
							STOCK SIZE		SUPPORT,							
							XX PHENOLIC		FILTER BOARD MOUNTING							
							MATERIAL									
							XXXP		4-6-64							
							TYPE & TEMPER		HEAT TREAT. SPEC.		DRAWN		CHECKED		FINAL APPROVAL	
							COLOR: NATURAL		FINISH: SEE NOTE		DRAWN		CHECKED		FINAL APPROVAL	
							FINISH & SPEC. NO.		ELEC. DES. APP.		MECH. DES. APP.		PX-767		A	

UNLESS OTHERWISE SPECIFIED DIMENSIONS ARE IN INCHES AND INCLUDE CHEMICALLY APPLIED OR PLATED FINISHES

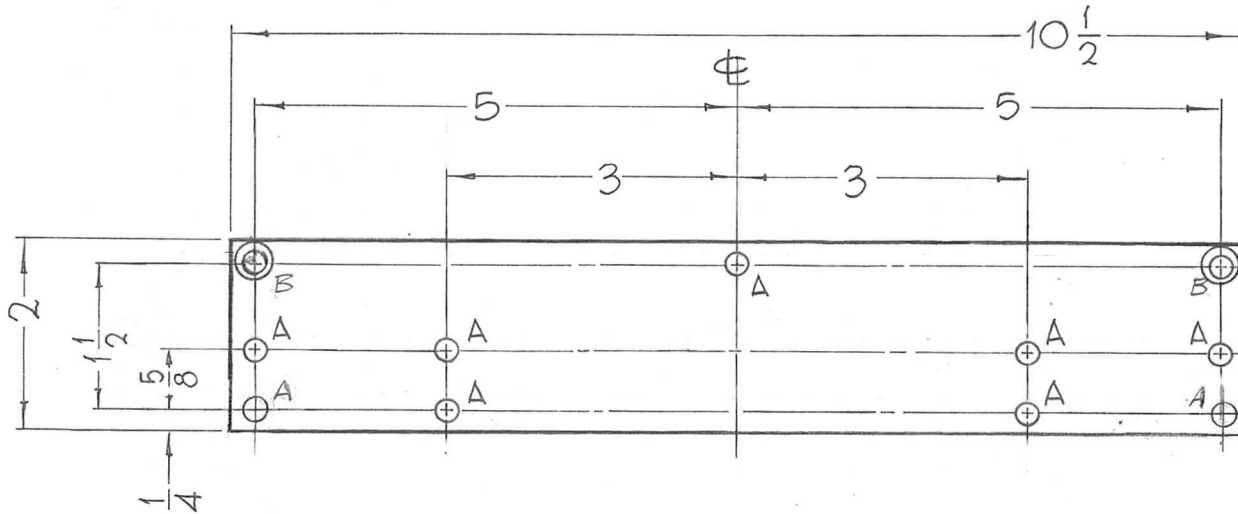
DECIMALS
.X ± .05
.XX ± .01
.XXX ± .005

FRACTIONS
± 1/64
ANGLES
± 0° 30'

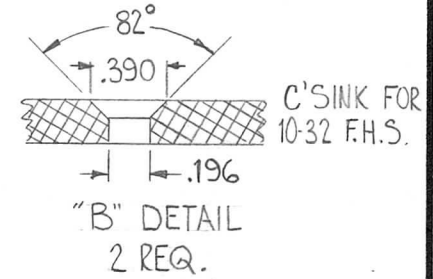
TOLERANCES

CODE
A

REQ. PER UNIT	USED ON			PX-771 A
	MODEL	ASS'Y. NO.	DATE	
2	TER-18K/600BF		8-20-63	



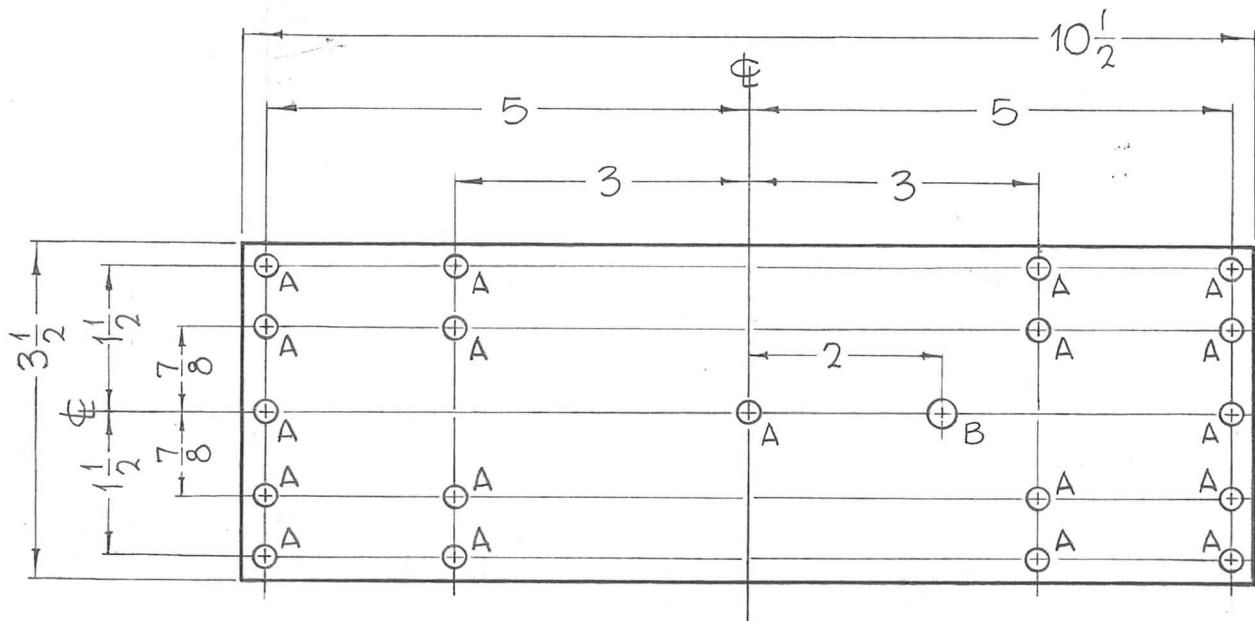
HOLES REQ.
A-15/64 DIA. 9



FUNGUS PROOFING PER
TMC SPECIFICATION S-113

REQ. ITEM	PART NO.	F. BUDETTI DESCRIPTION		SYMBOL
A	RELOCATE 2 A & 2 B HOLES	8/11/65	14540 H.V.V.	QC/B
Ø	ORIGINAL RELEASE FOR PRODUCTION	4/2/65	SRG	
X2	TER-18K600BF WAS TER-15K600BF	1-13-64	SRG	
SYM	DESCRIPTION	DATE	CH. NO.	DRAFTS
UNLESS OTHERWISE SPECIFIED DIMENSIONS ARE IN INCHES AND INCLUDE CHEMICALLY APPLIED OR PLATED FINISHES		SCALE 1/2" = 1"		
DECIMALS .X ± .05 .XX ± .01 .XXX ± .005	TOLERANCES	FRACTIONS ± 1/64 ANGLES ± 0° 30'	CODE	
XXXP		John C. Biele	QC/B	
TYPE & TEMPER	HEAT TREAT. SPEC.	DRAWN	CHECKED	FINAL APPROVAL
NATURAL				
FINISH & SPEC. NO.	ELEC. DES. APP.	MECH. DES. APP.	PX-771 A	

REQ. PER UNIT	USED ON			PX-772	Ø
	MODEL	ASS'Y. NO.	DATE		
1	TER-18K/600BF		8-20-63		



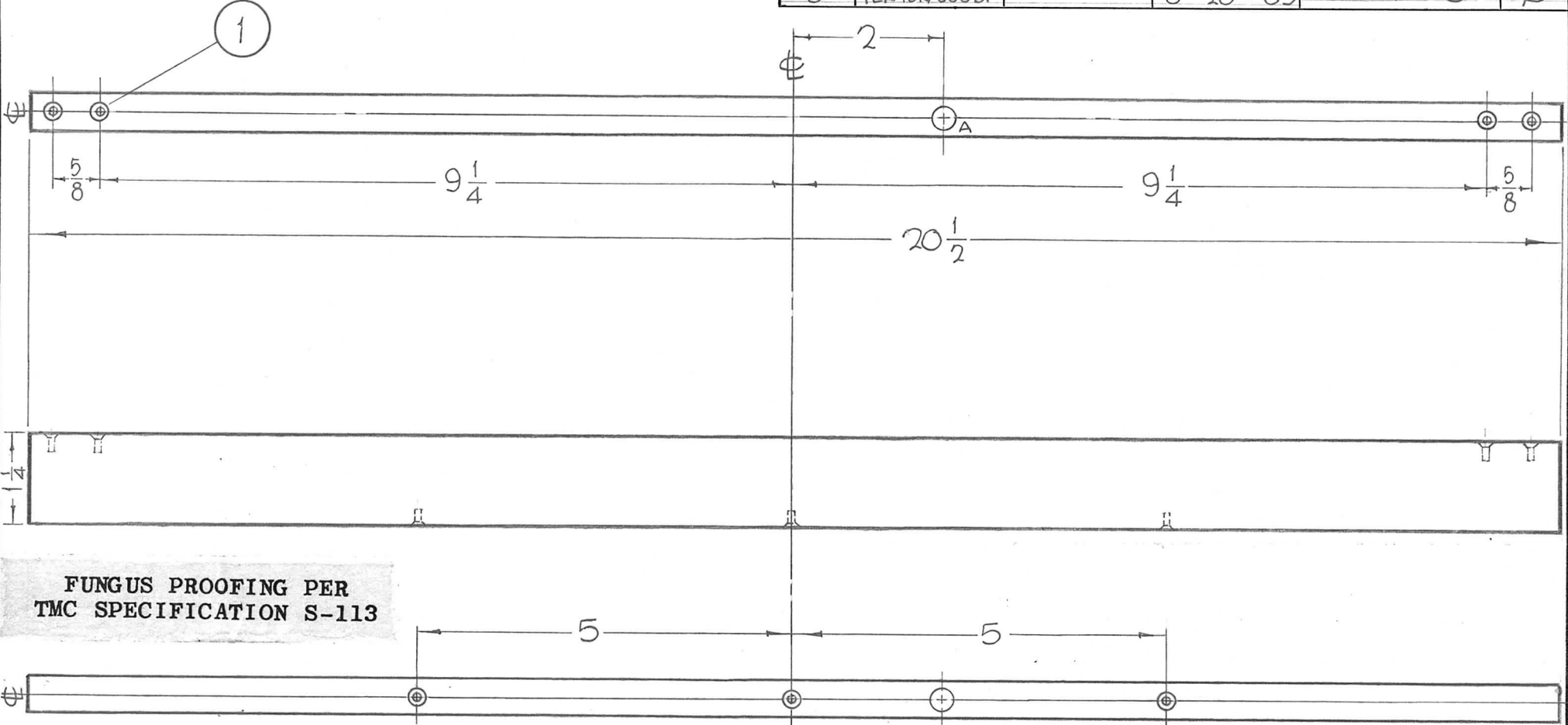
HOLES REQ
 A- 15/64 DIA. 19
 B- 5/16 DIA 1

FUNGUS PROOFING PER
 TMC SPECIFICATION S-113

							REQ. ITEM	PART NO.	F. BUDETTI	DESCRIPTION	SYMBOL		
								1/2 THICK	THE TECHNICAL MATERIEL CORP.				
								STOCK SIZE	MAMARONECK, NEW YORK				
Ø	ORIGINAL RELEASE FOR PRODUCTION	4/2/65	AA	SRG				PHENOLIC	BOARD, RESISTOR, SUPPORT				
X1	TER18K/600BF WAS TER15K/600BF	1-13-64		SRG									
SYM	DESCRIPTION	DATE	CH. NO.	DRAFTS	CHECKER	ENG. APP.	MATERIAL						
UNLESS OTHERWISE SPECIFIED DIMENSIONS ARE IN INCHES AND INCLUDE CHEMICALLY APPLIED OR PLATED FINISHES		SCALE				XXXXP							
		1/2" = 1"				TYPE & TEMPER		HEAT TREAT. SPEC.		DRAWN		CHECKED	FINAL APPROVAL
DECIMALS .X ± .05 .XX ± .01 .XXX ± .005		FRACTIONS ± 1/64 ANGLES ± 0° 30'		TOLERANCES		CODE		NATURAL		FINISH & SPEC. NO.		ELEC. DES. APP.	MECH. DES. APP.
								John C. Biele		gcb		PX-772	Ø

HOLES - A- 5/16 DIA. THRU 1REQ.

REQ. PER UNIT	USED ON		PX-773	Ø
	MODEL	ASS'Y. NO.		
3	TER-18K/600BF		8-20-63	



FUNGUS PROOFING PER
TMC SPECIFICATION S-113

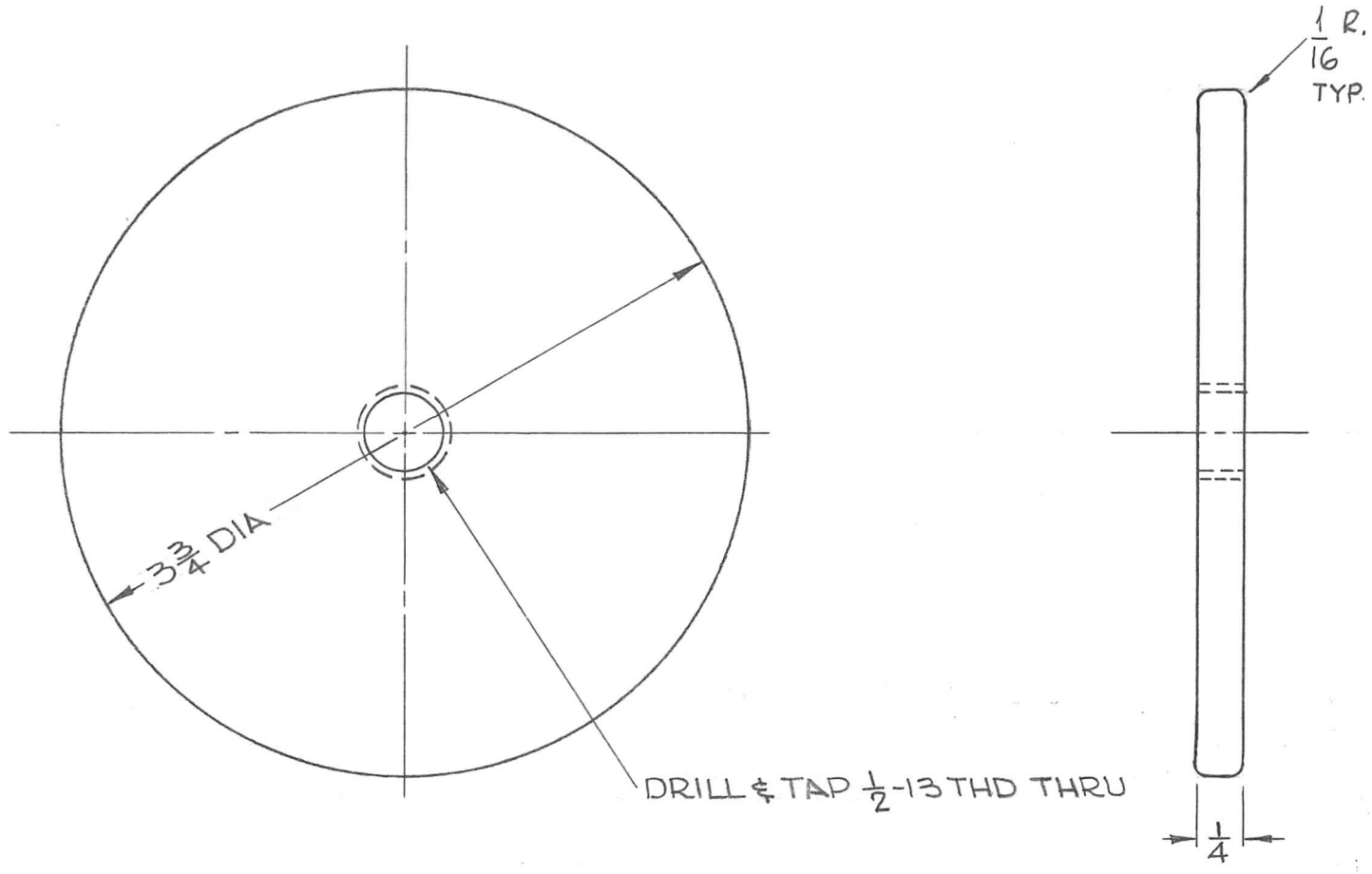
PROCEDURE FOR MTG. ITEM NO.1

- 1- DRILL 13/64 DIA. TO .552 MIN. DEPTH.
- 2- 120° C'SK, .220-.250 DIA.
- 3- TAP .410 MIN. DEPTH USE HELI-COIL TAP # 3FBP

- 4- INSTALL ITEM NO.1, 3/4 TO 1-1/2 PITCH BELOW SURFACE
- 5- BREAK OFF DRIVING TANG.

Ø	ORIGINAL RELEASE FOR PRODUCTION	4/2/65	M	SRG				7	1	NT-139-SFI-20	HELI-COIL					
X1	TER18K/600BF WAS TER15K/600BF	1-13-64		SRG				REQ. ITEM	PART NO.	F. BUDETTI	DESCRIPTION	SYMBOL				
SYM	DESCRIPTION	DATE	CH. NO.	DRAFTS	CHECKER	ENG. APP.	1/2 THICK		THE TECHNICAL MATERIEL CORP. MAMARONECK, NEW YORK							
							STOCK SIZE		STIFFENER, TOP							
							PHENOLIC		MATERIAL							
UNLESS OTHERWISE SPECIFIED DIMENSIONS ARE IN INCHES AND INCLUDE CHEMICALLY APPLIED OR PLATED FINISHES							SCALE		John C. Biele							
							1/2" = 1"		XXXXP		DRAWN		CHECKED		FINAL APPROVAL	
DECIMALS	TOLERANCES		FRACTIONS	CODE			TYPE & TEMPER		HEAT TREAT. SPEC.		DRAWN		CHECKED		FINAL APPROVAL	
.X ± .05			± 1/64				NATURAL				wks				PX-773	
.XX ± .01			ANGLES				FINISH & SPEC. NO.				ELEC. DES. APP.		MECH. DES. APP.		Ø	
.XXX ± .005			± 0° 30'													

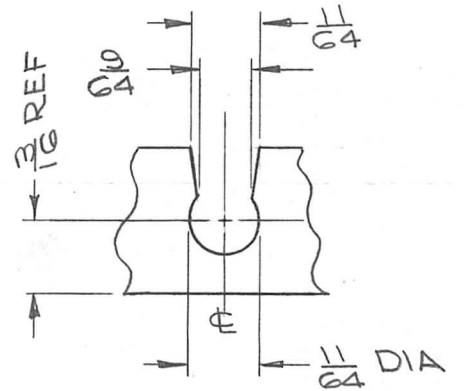
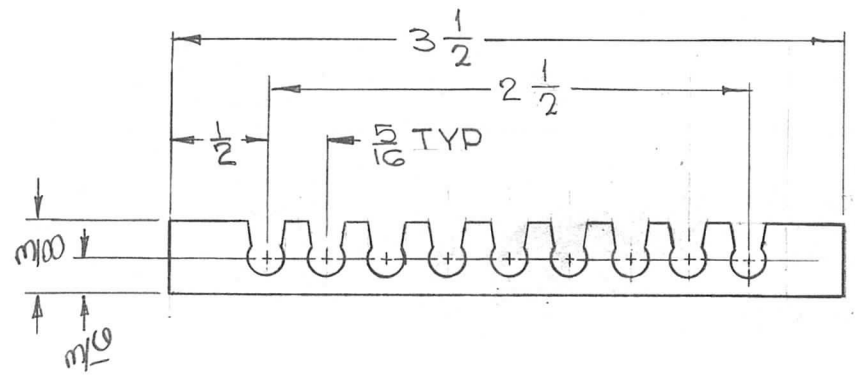
REQ. PER UNIT	USED ON			PX-775	O
	MODEL	ASS'Y. NO.	DATE		
4	GPT-200K(AT-105)	AX-450	9-4-63		



							REQ. ITEM	PART NO.	F. BUDETTI	DESCRIPTION	SYMBOL
							1/4		THE TECHNICAL MATERIEL CORP. MAMARONECK. NEW YORK		
O	ORIGINAL RELEASE FOR PRODUCTION	5-13-64	O	A.M.			STOCK SIZE		DISC, INSULATING		
X1	RADIUS ON EDGES ADDED	3-10-64					TEFLON				
SYM	DESCRIPTION	DATE	CH. NO.	DRAFTS	CHECKER	ENG. APP.	MATERIAL				
UNLESS OTHERWISE SPECIFIED DIMENSIONS ARE IN INCHES AND INCLUDE CHEMICALLY APPLIED OR PLATED FINISHES						SCALE			<i>F. Budetti</i>	QA	<i>RAC</i>
						1:1			9-4-63	12/7/63	
							TYPE & TEMPER	HEAT TREAT. SPEC.	DRAWN	CHECKED	FINAL APPROVAL
									<i>DB</i>	<i>12/7/63</i>	PX-775 O
							FINISH & SPEC. NO.		ELEC. DES. APP.	MECH. DES. APP.	

REQ. PER UNIT	USED ON		
	MODEL	ASS'Y. NO.	DATE
4	TER-25K/600B		9-9-63
4	TER-18K/600BF		9-9-63

PX-776 | \emptyset



~ CUTOUT DETAIL - 9 REQ ~

REQ.	ITEM	PART NO.	F. BUDETTI DESCRIPTION				SYMBOL
		1/4 THK	THE TECHNICAL MATERIEL CORP.				
		STOCK SIZE	MAMARONECK. NEW YORK				
		TEFLON	SPACER, COIL				
			MATERIAL				
			TYPE & TEMPER				
			HEAT TREAT. SPEC.				
			DRAWN				
			CHECKED				
			FINAL APPROVAL				
			FINISH & SPEC. NO.				
			ELEC. DES. APP.				
			MECH. DES. APP.				
			PX-776				\emptyset

ORIGINAL RELEASE FOR PRODUCTION

4/2/65 -44 SRG

TER 18K/600BF WAS TER 15K/600BF

1-13-64 SRG

UNLESS OTHERWISE SPECIFIED DIMENSIONS ARE IN INCHES AND INCLUDE CHEMICALLY APPLIED OR PLATED FINISHES

SCALE 1:1

DECIMALS .X ± .05 .XX ± .01 .XXX ± .005

FRACTIONS ± 1/64 ANGLES ± 0° 30'

TOLERANCES

Q. Chirouh 9-9-63

JCB

OB

PX-776 \emptyset

HOLES - A - 9/64 DIA. (4 REQ.)

B -  (8 REQ.)

REQ. PER UNIT

1

USED ON

MODEL

GPT-200K

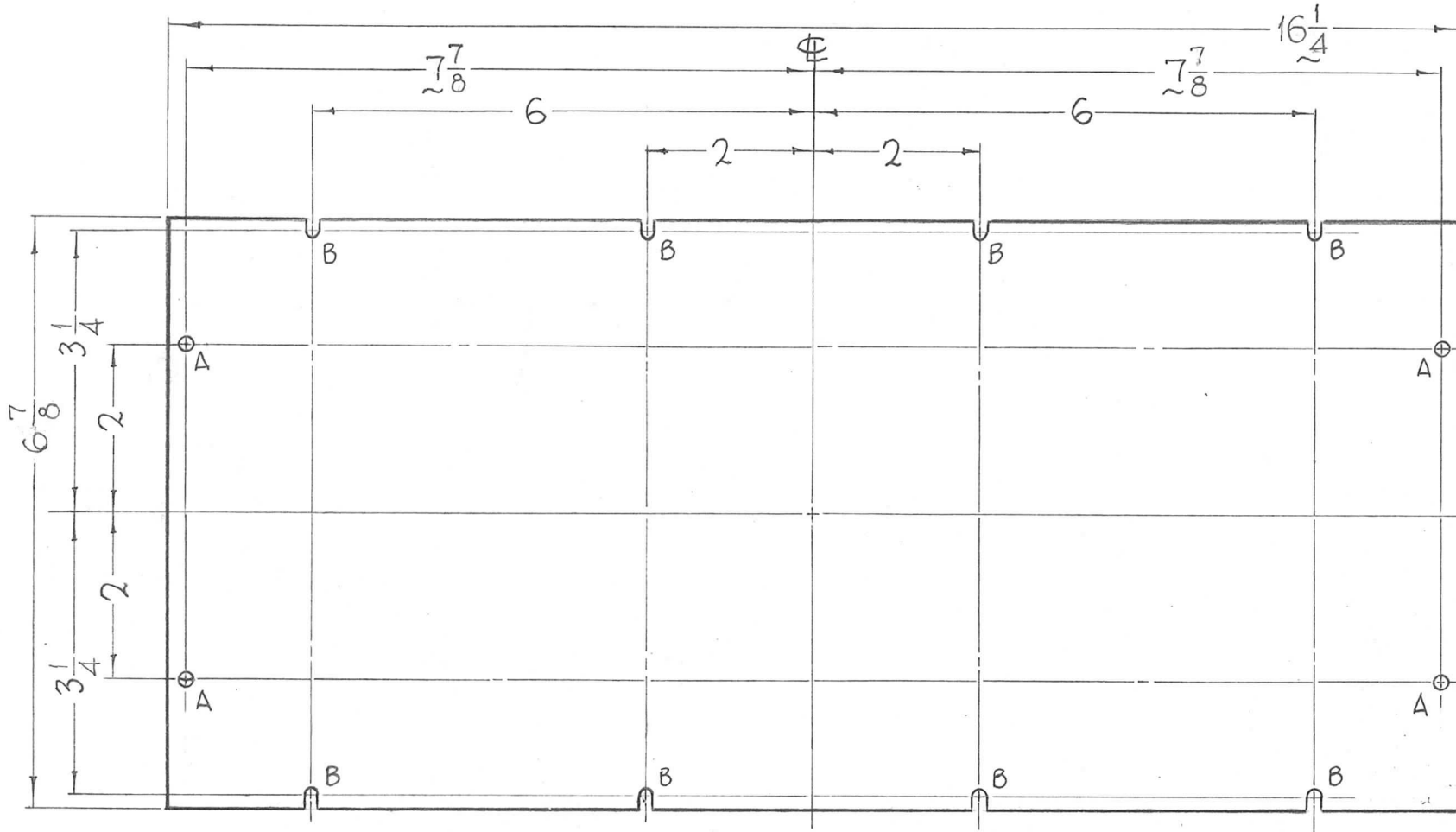
ASS'Y. NO.

AT-105

DATE

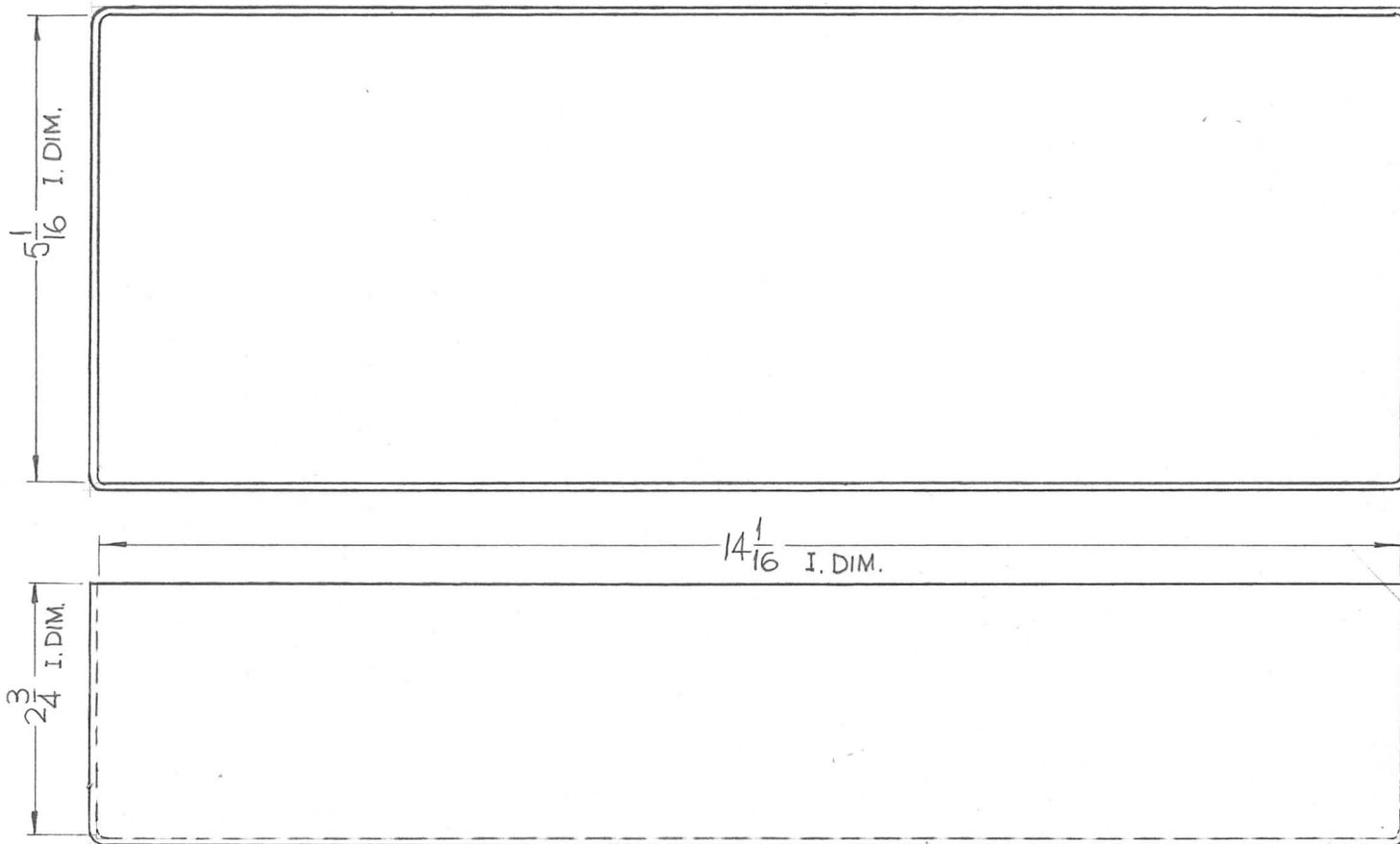
9-11-63

PX-777 A



REQ. ITEM		PART NO.		F. BUDETTI DESCRIPTION		SYMBOL	
A	6 7/8 WAS 7 1/6	6-25-63	14327	D.V.V.	9018	9018	
O	ORIGINAL RELEASE FOR PRODUCTION	5-13-64	O	A.M.			
XI	7-7/8 WAS 7-1/2, 16 1/4 WAS 15-1/2	10-23-63					
SYM	DESCRIPTION	DATE	CH. NO.	DRAFTS	CHECKER	ENG. APP.	
UNLESS OTHERWISE SPECIFIED DIMENSIONS ARE IN INCHES AND INCLUDE CHEMICALLY APPLIED OR PLATED FINISHES		SCALE					
		1 1/2" = 1"					
DECIMALS	FRACTIONS	CODE	TYPE & TEMPER		HEAT TREAT. SPEC.	DRAWN	CHECKED
.X ± .05	± 1/64	A	CLEAR			John C. Biele	aa
.XX ± .01	ANGLES		FINISH & SPEC. NO.				
.XXX ± .005	± 0° 30'						
		ELEC. DES. APP.		MECH. DES. APP.		FINAL APPROVAL	
						PX-777 A	

REQ. PER UNIT	USED ON			PX-778 O
	MODEL	ASS'Y. NO.	DATE	
2	TR-179	A-3143	9-19-63	



PROCESSING:
BAKE IN VACUUM,
300°F - 90 MIN.

FINISHING:
PAINT TMC GREY,
BAKE 225°F-20 MIN.

REQ.	ITEM	PART NO.	F. BUDETTI	DESCRIPTION	SYMBOL
				THE TECHNICAL MATERIEL CORP. MAMARONECK. NEW YORK	
				STOCK SIZE	
				83-VP, 3PLY STRANDREG, PREIMPRAGNET (POLYESTER) FIBERGLAS	BOX, CORE MOULDING
				MATERIAL	
				SCALE	
				1/2" = 1"	
				TYPE & TEMPER	
				HEAT TREAT. SPEC.	
				DRAWN	
				CHECKED	
				SEE NOTES	
				FINISH & SPEC. NO.	
				ELEC. DES. APP.	
				MECH. DES. APP.	
				SRG	aa
				4-8-64	
				4-8-64	
				PX-778 O	

O ORIGINAL RELEASE FOR PRODUCTION

DATE 4-6-64 CH. NO. 1 DRAFTS 1 CHECKER EF ENG. APP.

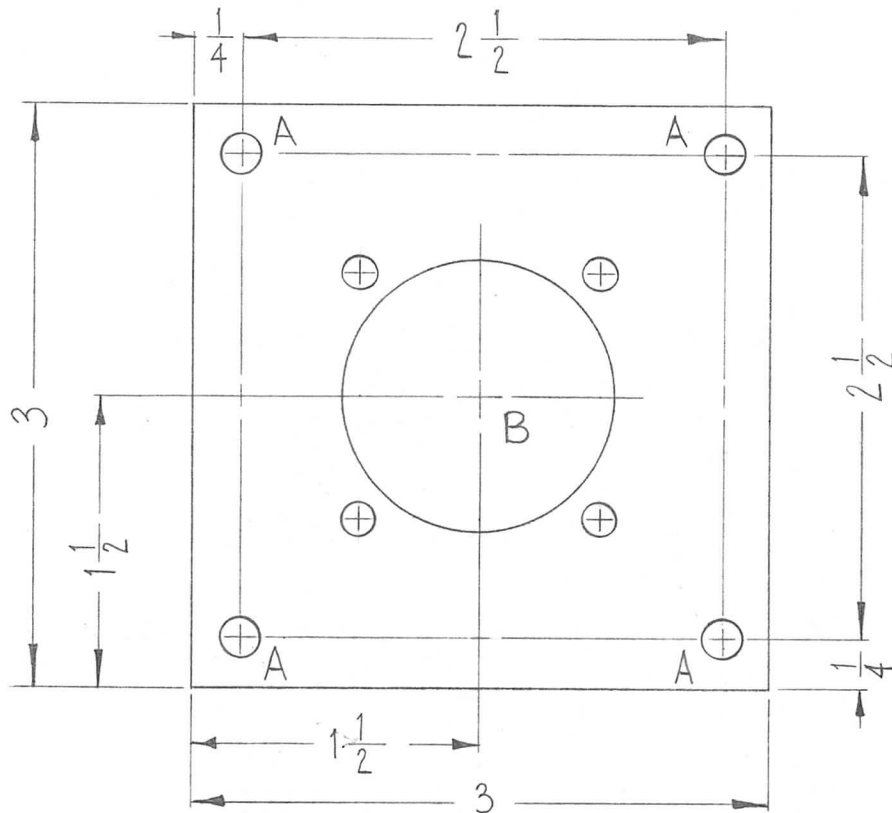
UNLESS OTHERWISE SPECIFIED DIMENSIONS ARE IN INCHES AND INCLUDE CHEMICALLY APPLIED OR PLATED FINISHES

DECIMALS .X ± .05 .XX ± .01 .XXX ± .005 FRACTIONS ± 1/64 ANGLES ± 0° 30'

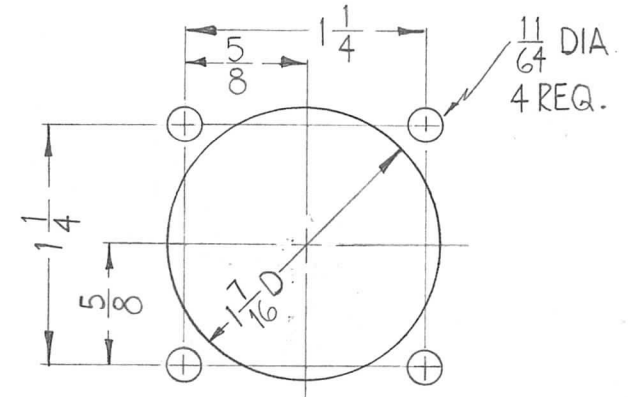
CODE A

SRG aa 4-8-64
DRAWN CHECKED
ELEC. DES. APP. MECH. DES. APP.
PX-778 O

REQ. PER UNIT	USED ON			PX-779	○
	MODEL	ASS'Y. NO.	DATE		
1	GPT-200K AX-397	A-2761	10-7-63		



HOLE	DESCRIPTION	REQ.
A	13/64 DIA.	4



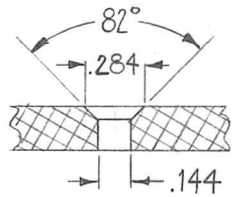
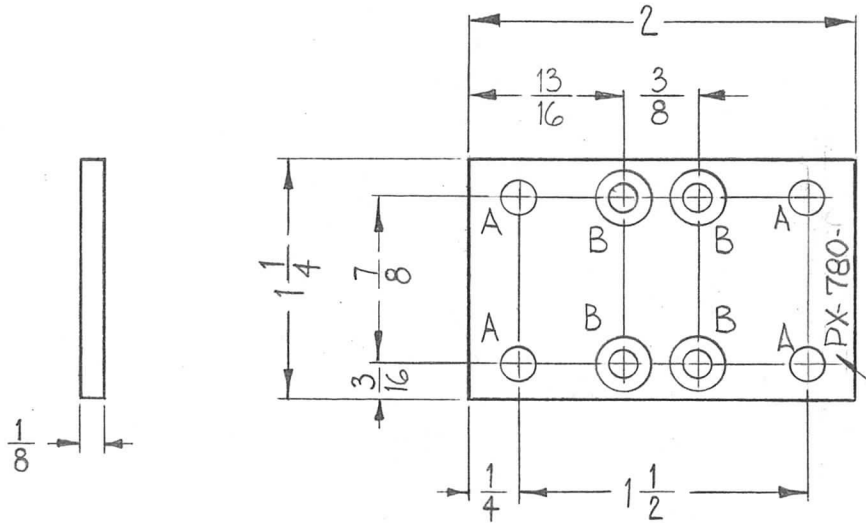
"B" DETAIL
1 REQ.

SYM	DESCRIPTION	DATE	CH. NO.	DRAFTS	CHECKER	ENG. APP.	REQ. ITEM	PART NO.	F. BUDETTI	DESCRIPTION	SYMBOL	
○	ORIGINAL RELEASE FOR PRODUCTION	5/27/64	○	A.M.								
								1/4 THK STOCK SIZE		THE TECHNICAL MATERIEL CORP. MAMARONECK. NEW YORK		
								EPOXY		BOARD, CONNECTOR MOUNTING		
UNLESS OTHERWISE SPECIFIED DIMENSIONS ARE IN INCHES AND INCLUDE CHEMICALLY APPLIED OR PLATED FINISHES		SCALE	T=1									
DECIMALS .X ± .05 .XX ± .01 .XXX ± .005		FRACTIONS ± 1/64 ANGLES ± 0° 30'		CODE	A			G-11		W.A. FRANCO	aa	RE
TOLERANCES							TYPE & TEMPER	HEAT TREAT. SPEC.	DRAWN	CHECKED	FINAL APPROVAL	
							NATURAL		○ B	RE	PX-779	
							FINISH & SPEC. NO.		ELEC. DES. APP.	MECH. DES. APP.	○	

REQ. PER UNIT	USED ON		
	MODEL	ASS'Y. NO.	DATE
1	GPT-200K	AR-137	12-17-63
1	GPT-200K	AR-138	12-17-63

PX-780 0

HOLE	DESCRIPTION	REQ.
A	11/64 DIA.	4



DR. & C'SINK FOR G-32

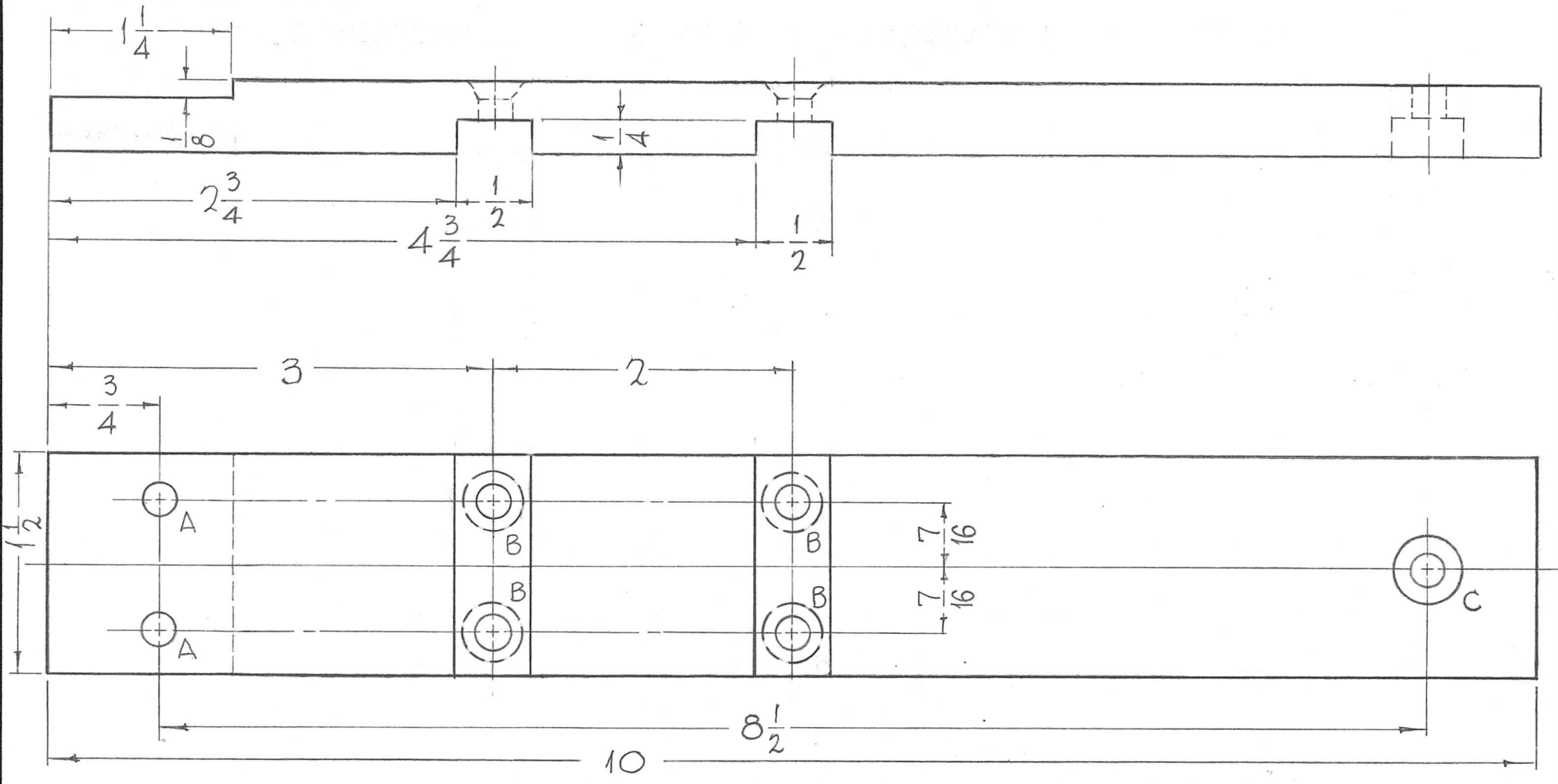
"B"- DETAIL
4 REQ.

STAMP TMC PART NO.
W/LATEST REV. LETTER
1/8 HIGH BLACK GOTHIC.

SYM	DESCRIPTION	DATE	CH. NO.	DRAFTS	CHECKER	ENG. APP.	REQ. ITEM	PART NO.	F. BUDETTI	DESCRIPTION	SYMBOL	
0	ORIGINAL RELEASE FOR PROD.	4-24-64			SRG		1/8 THK.			THE TECHNICAL MATERIEL CORP. MAMARONECK, NEW YORK	BOARD, RELAY MOUNTING	
A	REVISED & REDRAWN						STOCK SIZE					
							BAKELITE					
UNLESS OTHERWISE SPECIFIED DIMENSIONS ARE IN INCHES AND INCLUDE CHEMICALLY APPLIED OR PLATED FINISHES							SCALE	1" = 1"				
							TYPE & TEMPER	HEAT TREAT. SPEC.	DRAWN	CHECKED	FINAL APPROVAL	
DECIMALS .X ± .05 .XX ± .01 .XXX ± .005							FRACTIONS ± 1/64 ANGLES ± 0° 30'		CODE			
TOLERANCES							A	NATURAL-S-113		W.A. FRANCO	aa	KAC
							FINISH & SPEC. NO.		ELEC. DES. APP.	MECH. DES. APP.	PX-780 0	

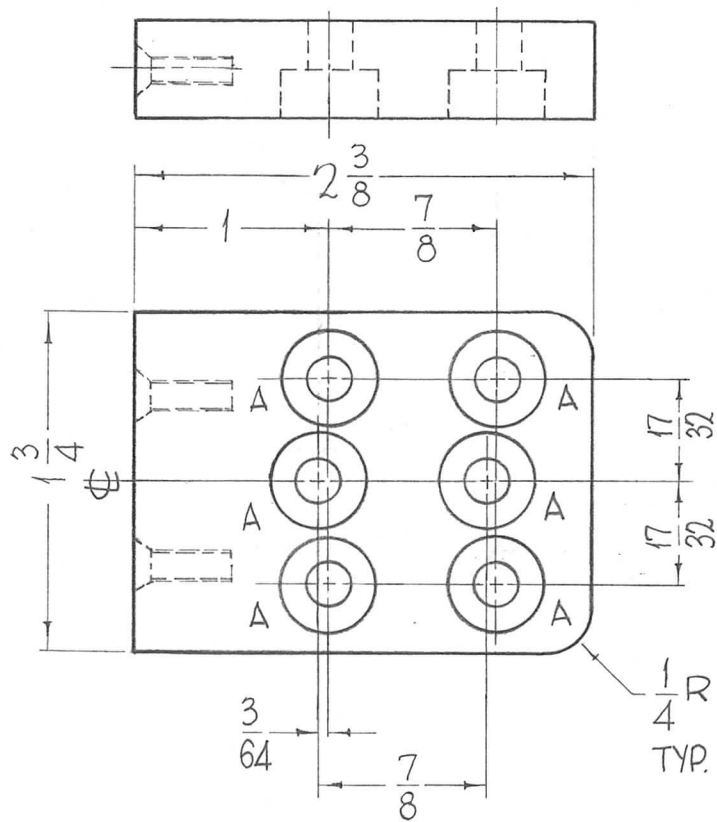
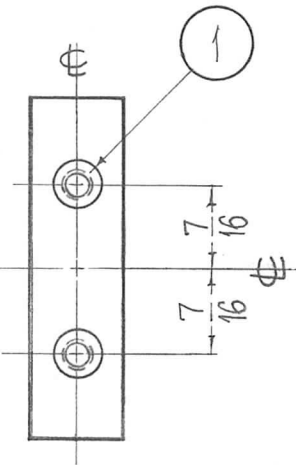
HOLES "B" DRILL & C'SINK 4REQ "C"-DRILL 15/64 DIA. THRU 2REQ.
 "A" 15/64 DIA. 2REQ 10-32 FHS C'BORE 1/2 DIA. X 1/4 DP.

REQ. PER UNIT	USED ON			PX-790	0
	MODEL	ASS'Y. NO.	DATE		
1	GPT-200K	AS-124	12-27-63		



REQ.	ITEM	PART NO.	F. BUDETTI	DESCRIPTION	SYMBOL							
0	ORIG. RELEASE FOR PROD.	5-166A	SRG	1/2 THICK STOCK SIZE	THE TECHNICAL MATERIEL CORP. MAMARONECK, NEW YORK							
XI	1 1/2 DIM ADDED (ERROR)	1-22-64		SILICONE GLASS	LEG, SUPPORT, WAFER							
SYM	DESCRIPTION	DATE	CH. NO.	DRAFTS	CHECKER	ENG. APP.	MATERIAL					
UNLESS OTHERWISE SPECIFIED DIMENSIONS ARE IN INCHES AND INCLUDE CHEMICALLY APPLIED OR PLATED FINISHES		SCALE 1"=1"		G-7		John C. Biele	aa	Roe				
DECIMALS .X ± .05 .XX ± .01 .XXX ± .005		FRACTIONS ± 1/64 ANGLES ± 0° 30'		TOLERANCES		CODE A	NATURAL	TYPE & TEMPER	HEAT TREAT. SPEC.	DRAWN	CHECKED	FINAL APPROVAL
							FINISH & SPEC. NO.			ELEC. DES. APP.	MECH. DES. APP.	PX-790 0

REQ. PER UNIT	USED ON			PX-791 0
	MODEL	ASS'Y. NO.	DATE	
2	GPT-200K	AS-124	12-26-63	



HOLES REQ.
 A- DRILL 15/64 DIA. THRU 6
 C'BORE 1/2 DIA. X 1/4 DR.

PROCEDURE FOR MTG. ITEM NO.1

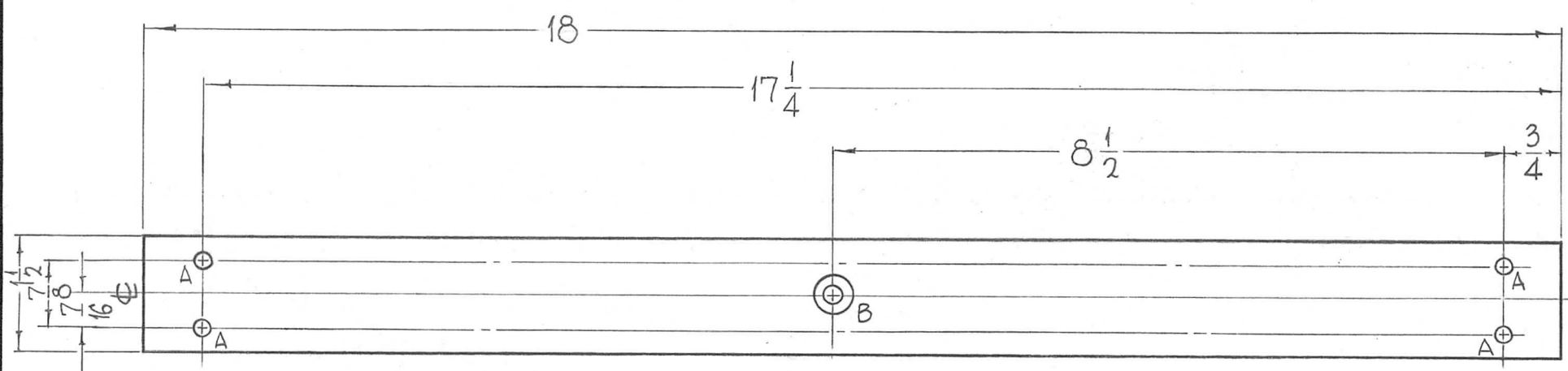
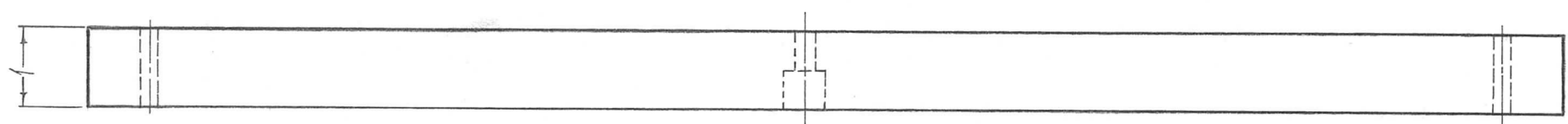
- 1- DRILL 13/64 DIA. TO .552 MIN. DEPTH.
- 2- 120° C'SINK TO .22 - .25 DIA.
- 3- TAP .410 MIN. DEPTH USE HELI-COIL TAP # 3FBP.
- 4- INSTALL ITEM NO.1, 3/4 TO 1 1/2 PITCH BELOW SURFACE.
- 5- BREAK OFF DRIVING TANG.

2	1	NT-139SEI-20	HELI-COIL (10-32)		
REQ. ITEM	PART NO.		F. BUDETTI DESCRIPTION		SYMBOL
	1/2 THICK		THE TECHNICAL MATERIEL CORP.		
	STOCK SIZE		MAMARONECK, NEW YORK		
0	ORIG. RELEASE FOR PROD.		PLATE, WAFER MTG.		
DATE	CH. NO.	DRAFTS	CHECKER	ENG. APP.	
5-16-64			SRG		
UNLESS OTHERWISE SPECIFIED DIMENSIONS ARE IN INCHES AND INCLUDE CHEMICALLY APPLIED OR PLATED FINISHES		SCALE 1" = 1"		MATERIAL	
TOLERANCES		CODE A		G-7	
.X ± .05				John C. Biele	
.XX ± .01				aa	
.XXX ± .005				Roe	
				TYPE & TEMPER HEAT TREAT. SPEC.	
				DRAWN	
				CHECKED	
				FINAL APPROVAL	
				NATURAL	
				ELEC. DES. APP.	
				MECH. DES. APP.	
				PX-791 0	

HOLES A- 13/64 DIA. 4 REQ. B- DRILL 15/64 THRU, C'BORE 1/2 DIA. X 1/2 DP. 1 REQ

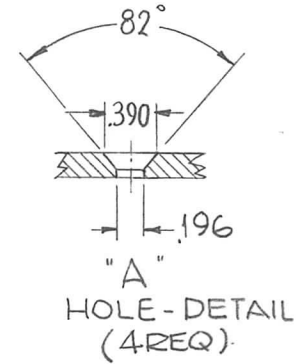
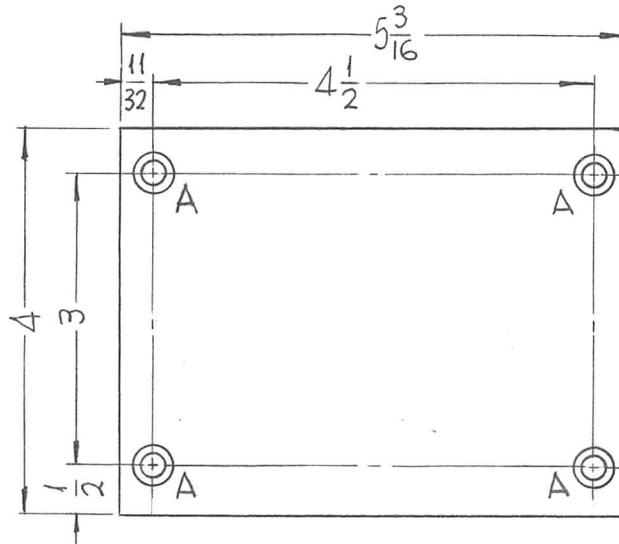
REQ. PER UNIT	USED ON		
	MODEL	ASS'Y. NO.	DATE
1	GPT-200K	AS-124	1-6-64

PX-792 Ø



							REQ. ITEM	PART NO.	F. BUDETTI	DESCRIPTION	SYMBOL
							AS NOTED		THE TECHNICAL MATERIEL CORP.		
							STOCK SIZE		MAMARONECK. NEW YORK		
0	ORIG. RELEASE FOR PROD.	5-16-64		SRG			SUPRAMICA		LEG. SUPPORT, II-2		
SYM	DESCRIPTION	DATE	CH. NO.	DRAFTS	CHECKER	ENG. APP.	MATERIAL				
UNLESS OTHERWISE SPECIFIED DIMENSIONS ARE IN INCHES AND INCLUDE CHEMICALLY APPLIED OR PLATED FINISHES						SCALE	500		John C. Biele	aa	Roe
						TYPE & TEMPER	HEAT TREAT. SPEC.	DRAWN	CHECKED	FINAL APPROVAL	
DECIMALS .X ± .05 .XX ± .01 .XXX ± .005						TOLERANCES	NATURAL		ELEC. DES. APP.		PX-792 Ø
FRACTIONS ± 1/64 ANGLES ± 0° 30'						CODE	FINISH & SPEC. NO.		MECH. DES. APP.		
						A					

REQ. PER UNIT	USED ON			PX-799	O
	MODEL	ASS'Y. NO.	DATE		
1	TR-179	A-3143	2-25-64		



REQ.	ITEM	PART NO.	F. BUDETTI				DESCRIPTION	SYMBOL							
		1/4 THICK	THE TECHNICAL MATERIEL CORP. MAMARONECK, NEW YORK				INSULATOR, XFMR TIEDOWN	O							
		STOCK SIZE													
		G7 SILICONE GLASS	ORIGINAL RELEASE FOR PRODUCTION				4-6-64	1	AS						
SYM	DESCRIPTION	DATE	CH. NO.	DRAFTS	CHECKER	ENG. APP.	MATERIAL								
UNLESS OTHERWISE SPECIFIED DIMENSIONS ARE IN INCHES AND INCLUDE CHEMICALLY APPLIED OR PLATED FINISHES			SCALE 1/2" = 1"				—	—	SRG	aa	RJC				
DECIMALS .X ± .05 .XX ± .01 .XXX ± .005		FRACTIONS ± 1/64 ANGLES ± 0° 30'		CODE A		TYPE & TEMPER		HEAT TREAT. SPEC.		DRAWN		CHECKED		FINAL APPROVAL	
TOLERANCES						—		—		2RFB		[Signature]		PX-799 O	
						FINISH & SPEC. NO.		ELEC. DES. APP.		MECH. DES. APP.					