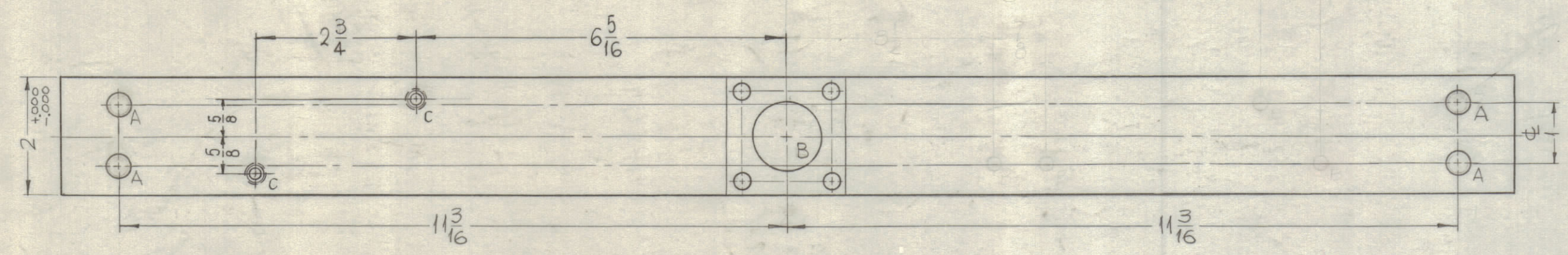
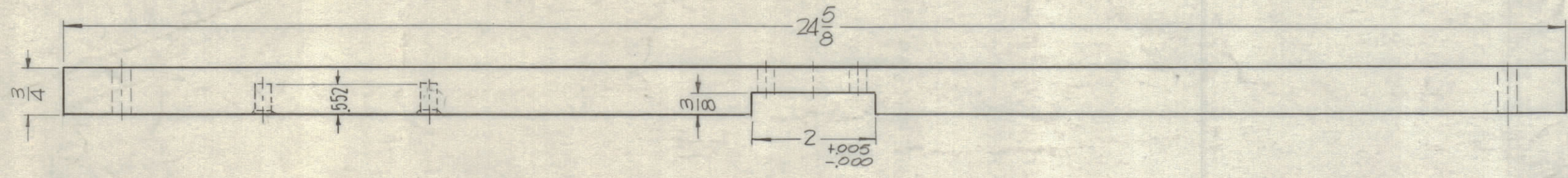
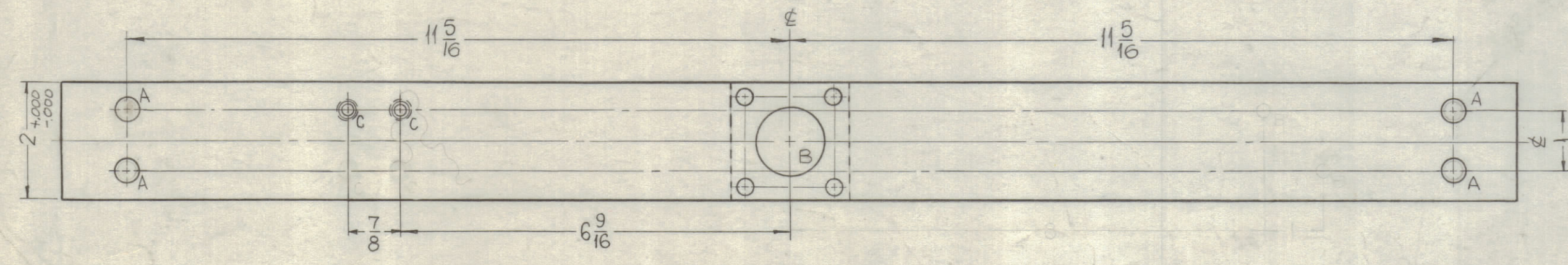
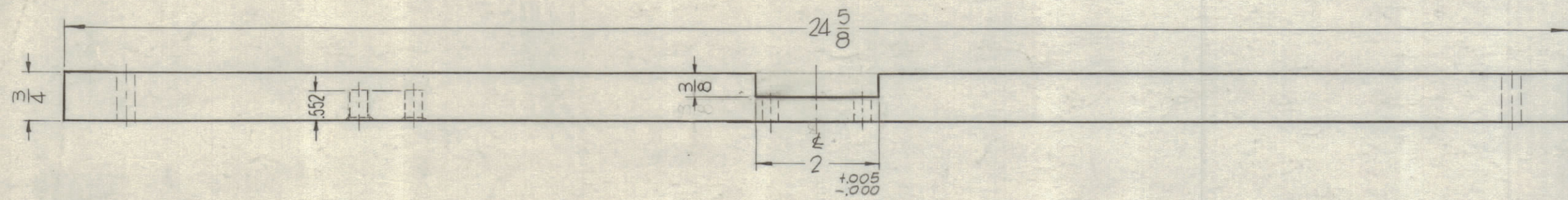


REVISIONS							
ZONE	SYM	DESCRIPTION	DATE	E.M.N. NO.	DRAFT	CHKD	APPD
X3		△ HOLES WERE 9/32 DIA.					
X4		4 HELI-COIL ADDED	1-23-64				
0		ORIGINAL RELEASE FOR PRODUCTION	5-18-64		SRG		



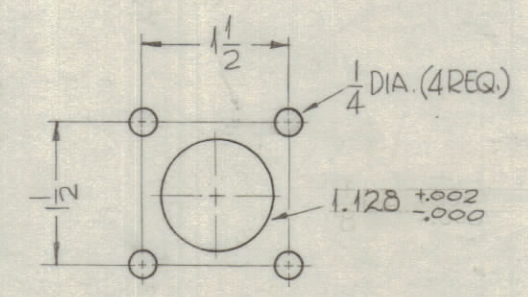
PX-715-2

HOLES: PX-715-1 PX-715-2
 A ~ 3/8 DIA. — 4 REQ. — 4 REQ.
 B ~ SEE DETAIL — 1 REQ. — 1 REQ.
 C ~ 10-32 HELI-COIL — 2 REQ. — 2 REQ.
 1- DRILL 13/64 (203) TO .552 MIN DEPTH
 2- 120° COUNTERSINK .22-.25 DIA. PX-715-2
 3- TAP .410 MIN. DEPTH USE HELI-COIL TAP #3F9B
 4- INSTALL ITEM 1. 3/4 TO 1-1/2 PITCH BELOW SURFACE
 5- BREAK OFF DRIVING TANG (1 REQ.)



PX-715-1

C ~ 10-32 HELI-COIL — 2 REQ. — 2 REQ.
 1- DRILL 13/64 (203) TO .552 DEEP DEPTH
 2- 120° COUNTERSINK .22-.25 DIA. PX-715-2
 3- TAP .410 MIN. DEPTH USE HELI-COIL TAP #3F9B
 4- INSTALL ITEM 1. 3/4 TO 1-1/2 PITCH BELOW SURFACE
 5- BREAK OFF DRIVING TANG (1 REQ.)



B-DETAIL

4	1	NT-139-SF1-20	HELI-COIL	
REQ'D.	ITEM	PART NUMBER	DESCRIPTION	SYMBOL

F. BUDETTI LIST OF MATERIAL			
MATERIAL		THE TECHNICAL MATERIEL CORP.	
SILICON GLASS		MAMARONECK, NEW YORK	
FINISH		TITLE	
NATURAL		SUPPORT TOP, BANDSWITCH	
DRAWN	DATE	FINAL APPROVAL	DATE
SRG	6-10-63	KJC	
CHECKED	DATE		
aa			
ELECT. DES.	DATE		
SRG	11/1/64		
MECH. DES.	DATE		
aa	3/1/64		
UNLESS OTHERWISE SPECIFIED DIMENSIONS ARE IN INCHES AND INCLUDE CHEMICALLY APPLIED OR PLATED FINISHES		SHEET	
TOLERANCES		REV. LTR.	
DECIMALS: .X ± .05, .XX ± .01, .XXX ± .005		04	
FRACTIONS: ± 1/64 ANGLES: ± 0° 30'		PX-715	

1 ea	GPT-200K	A-3187
Q'TY./UNIT	MODEL USED ON	ASS'Y. NO.
SCALE	CODE	

NOTES

THE CONTENTS OF THIS DRAWING ARE THE EXCLUSIVE PROPERTY OF THE TECHNICAL MATERIEL CORP. ITS UNAUTHORIZED USE OR REPRODUCTION IN WHOLE OR IN PART IS STRICTLY FORBIDDEN.

PX-715
0