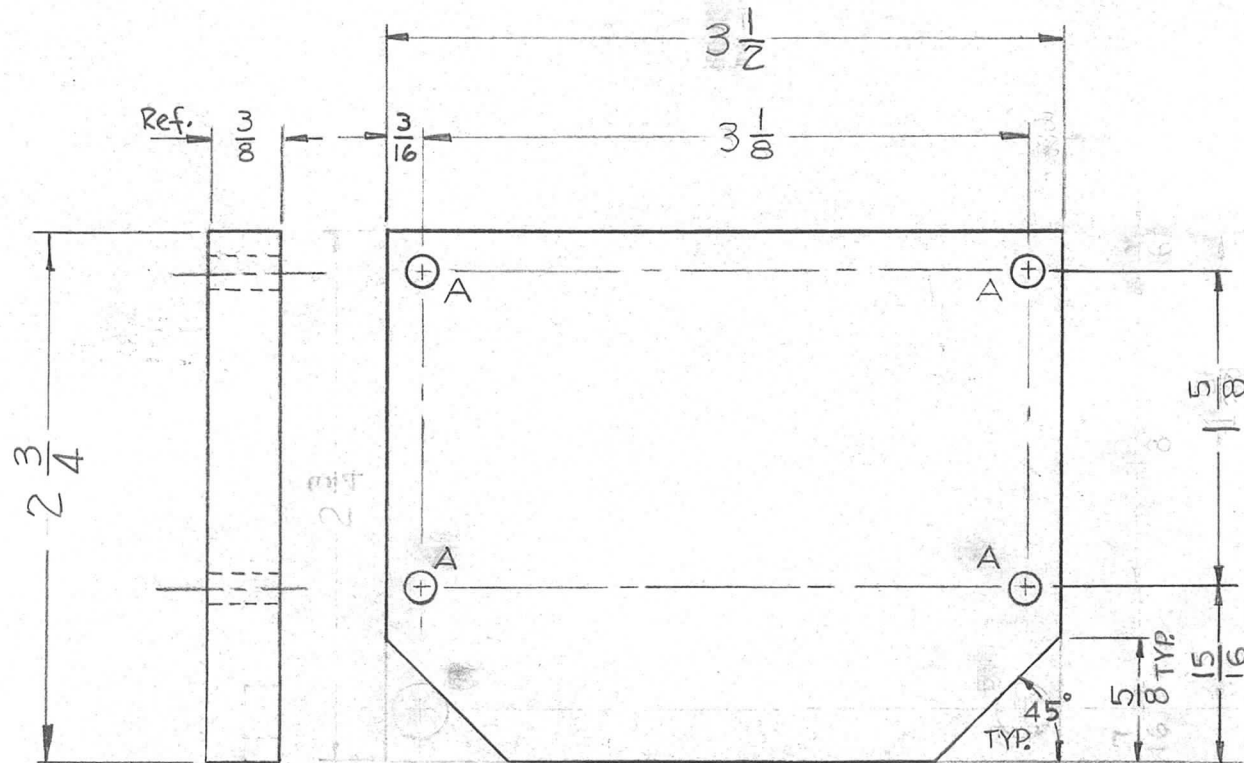


THE CONTENTS OF THIS DRAWING ARE THE EXCLUSIVE PROPERTY OF THE TECHNICAL MATERIEL CORP. ITS UNAUTHORIZED USE OR REPRODUCTION IN WHOLE OR IN PART IS STRICTLY FORBIDDEN.

REQ. PER UNIT	USED ON		
	MODEL	ASS'Y. NO.	DATE
2	AFC-2		11-22-61

PX-640



HOLE REQ.
 A- $\frac{5}{32}$ DIA 4
 B- $\frac{1}{32}$ CBORE

SYM	DESCRIPTION	DATE	CH. NO.	DRAFTS	CHECKER	ENG. APP.	REQ. ITEM	PART NO.	DESCRIPTION	SYMBOL
							3/8		THE TECHNICAL MATERIEL CORP. MAMARONECK, NEW YORK	BASE, OVEN, MOUNTING
							STOCK SIZE			
							PHENOLIC			
							XXXXP		E. G.	RUZZO
							NATURAL			
										PX-640

UNLESS OTHERWISE SPECIFIED:
 DIMENSIONS ARE IN INCHES
 TOLERANCES ON
 FRAC. $\pm 1/64$ DEC. $\pm .005$ ANGLES $\pm 1/2^\circ$

SCALE: Do Not Scale
 MAXIMUM ALLOWABLE TOLERANCES HAVE BEEN DETERMINED AND ANY DEVIATIONS WILL BE CAUSE FOR REJECTION.
 REMOVE ALL BURRS AND SHARP EDGES

TYPE & TEMPER: XXXXP
 FINISH & SPEC. NO.: NATURAL
 HEAT TREAT. SPEC.:
 DRAWN: [Signature]
 CHECKED: [Signature]
 FINAL APPROVAL: [Signature] PX-640
 ELEC. DES. APP. MECH. DES. APP.