

THE CONTENTS OF THIS DRAWING ARE THE EXCLUSIVE PROPERTY OF THE TECHNICAL MATERIEL CORP. ITS UNAUTHORIZED USE OR REPRODUCTION IN WHOLE OR IN PART IS STRICTLY FORBIDDEN.

REQ. PER UNIT

1

MODEL

AFC-2

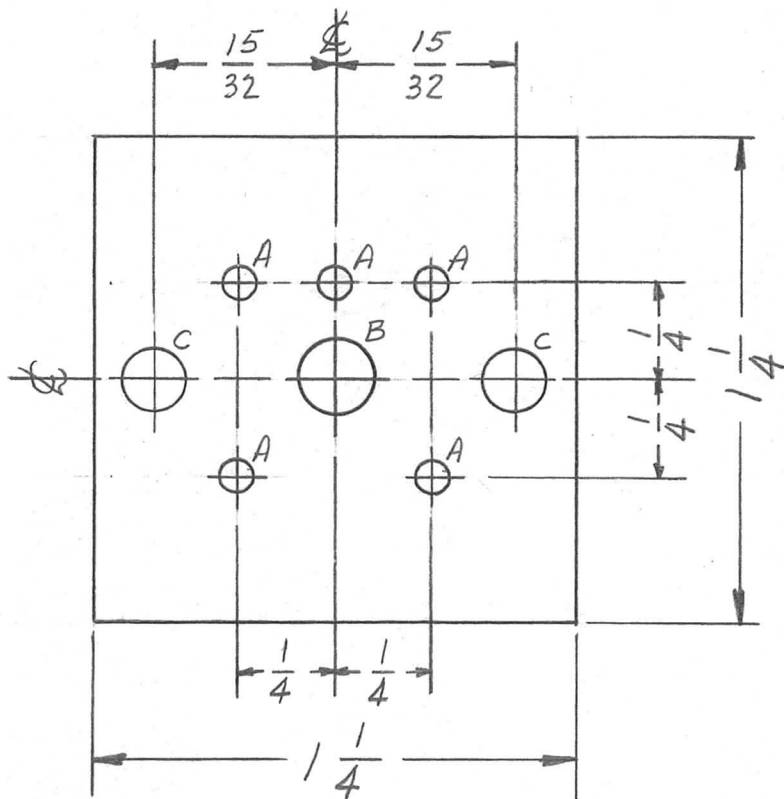
USED ON

ASS'Y. NO.

DATE

11-17-61

PX-639



HOLES ~

A - 5/64 DIA. 5 REQ.

B - 3/16 DIA. 1 REQ.

C - 5/32 DIA. 2 REQ.

① MOUNT IN "A" HOLES AS SHOWN

5	1	TE-168-4-B	TERMINAL MINIATURE	A		
REQ.	ITEM	PART NO.	DESCRIPTION	SYMBOL		
		1/16 THICK	THE TECHNICAL MATERIEL CORP. MAMARONECK, NEW YORK			
		STOCK SIZE				
		PHENOLIC	BOARD, MTG., TRANSFORMER			
		MATERIAL	250 KC AMPL			
SYM	DESCRIPTION	DATE	CH. NO.	DRAFTS	CHECKER	ENG. APP.
UNLESS OTHERWISE SPECIFIED: DIMENSIONS ARE IN INCHES TOLERANCES ON FRAC. ± 1/64 DEC. ± .005 ANGLES ± 1/2°		SCALE: Do Not Scale				
		MAXIMUM ALLOWABLE TOLERANCES HAVE BEEN DETERMINED AND ANY DEVIATIONS WILL BE CAUSE FOR REJECTION. REMOVE ALL BURRS AND SHARP EDGES				
	XXXXP		ab	RLZZE	FINAL APPROVAL	
	NATURAL				PX-639	
	FINISH & SPEC. NO.		ELEC. DES. APP.	MECH. DES. APP.		