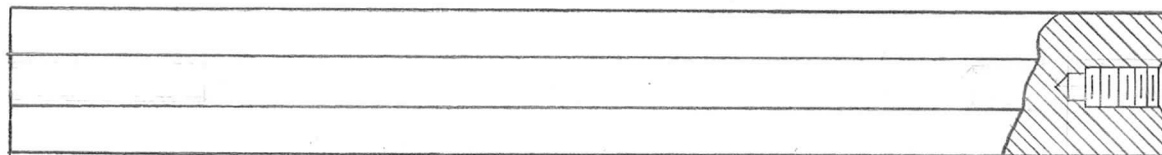
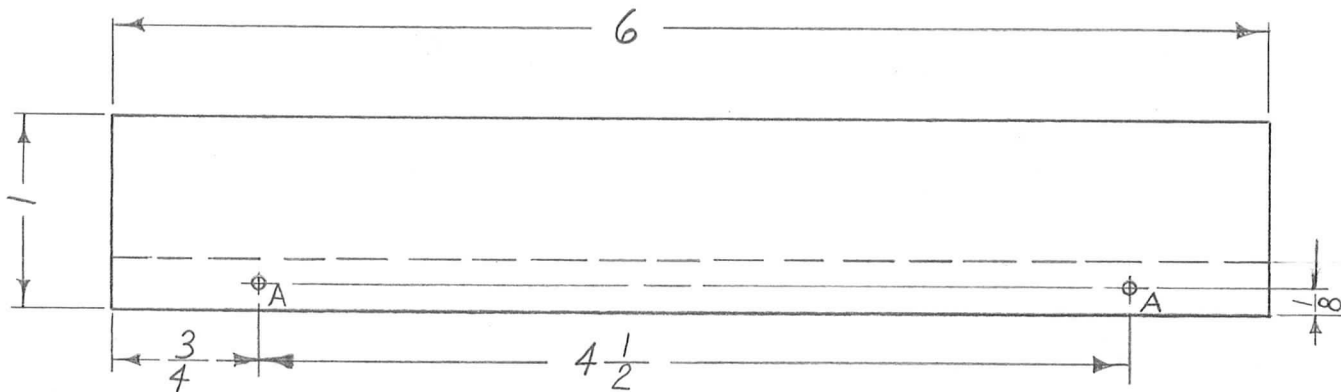
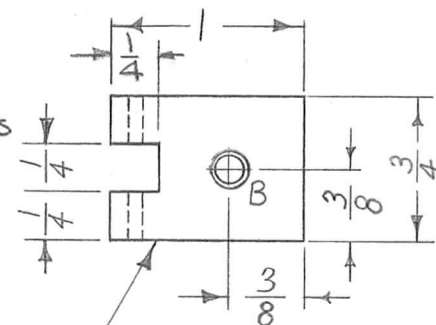


REQ. PER. UNIT	USED ON			PX-587	A
	MODEL	ASS'Y. NO.	DATE		
2	ACU		9-16-60		



①  
MOUNT ITEM 1  
IN ALL "B" HOLES  
AS SHOWN AFTER  
TAPING



OPPOSITE SIDE THE SAME

A — .065 D. (FOR PIN 99-062-16). 2 REQ.

B — HOLES TO BE MACHINED AS FOLLOWS: 2 REQ.

- 1 — #16 DRILL (.174) TO .500 DP.
- 2 — 120° C'SINK, .20-.23 DIA.
- 3 — TAP .360 MIN. DEPTH, USE HELI COIL TAP #2 CPA
- 4 — MOUNT ITEM (1) 3/4 TO 1-1/2 PITCH BELOW SURFACE
- 5 — BREAK OFF DRIVING TANG,

2		1		NT-139-SC08-20		INSERT, SCREW THREAD			
REQ.	ITEM	PART NO.		DESCRIPTION		SYMBOL			
		3/4 X 1"		THE TECHNICAL MATERIEL CORP.					
		STOCK SIZE		MAMARONECK, NEW YORK					
A	2	"B" HOLES WERE DR & TAP 8-32 X 1" DP		8-9-62	6799	GS.	102	16	SUPRA MICA 500
	1	ITEM 1 ADDED							SUPPORT, COIL
ISSUE	ITEM	CHANGED FROM		DATE	CH. NO.	DRAFTS	CHECKER	ENG. APP.	
TOLERANCES		SCALE: FULL							
DEC. DIM. ±		MAXIMUM ALLOWABLE TOLERANCES HAVE		TYPE & TEMPER		HEAT TREAT. SPEC.		DRAWN	
FRAC. DIM. ± 1/64		BEEN DETERMINED AND ANY DEVIATIONS						CHECKED	
ANGULAR DIM. ±		WILL BE CAUSE FOR REJECTION.						FINAL APPROVAL	
		REMOVE ALL BURRS AND SHARP EDGES		FINISH & SPEC. NO.		ELEC. DES. APP		MECH. DES. APP	
								PX-587	
								A	