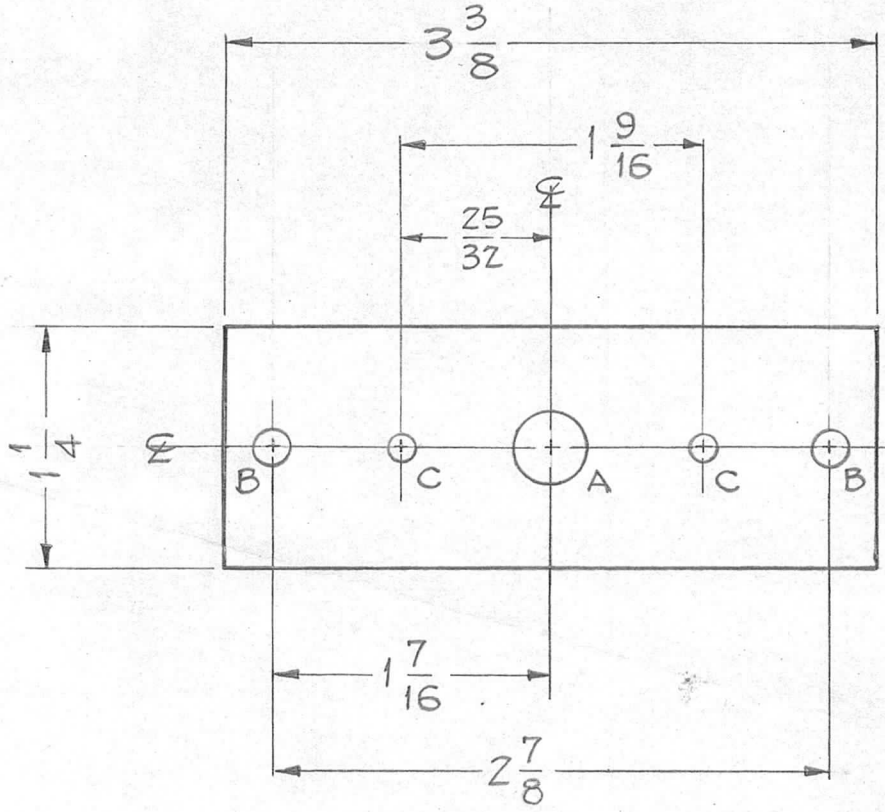


REQ. PER. UNIT	USED ON			PX-567	A
	MODEL	ASSY. NO.	DATE		
1	GPT-40K	MODE SW.	7-1-60		



HOLES ~

A - $\frac{3}{8}$ DIA. 1 REQ.

B - $\frac{3}{16}$ DIA. 2 REQ.

C - $\frac{9}{64}$ DIA. 2 REQ.

* FUNGUS PROOFING PER TMC SPECIFICATION S-113

REQ.	ITEM	PART NO.	DESCRIPTION		SYMBOL					
			1/8" THICK STOCK SIZE							
			PHENOLIC MATERIAL							
			XXXP							
			NATURAL *							
			FINISH & SPEC. NO.							
A	SI13 ADDED	4-13-64 11186	A.M. <i>file</i>	<i>QOB</i>						
ISSUE	ITEM	CHANGED FROM	DATE	CH. NO.	DRAFTS	CHECKER	ENG. APP.	THE TECHNICAL MATERIEL CORP. MAMARONECK, NEW YORK		
TOLERANCES			SCALE: FULL-DO NOT SCALE-			XXXP		J.C. Biele <i>file</i>	<i>QOB</i>	
DEC. DIM. ±			MAXIMUM ALLOWABLE TOLERANCES HAVE BEEN DETERMINED AND ANY DEVIATIONS WILL BE CAUSE FOR REJECTION.			TYPE & TEMPER		DRAWN	CHECKED	FINAL APPROVAL
FRAC. DIM. ± 1/64			REMOVE ALL BURRS AND SHARP EDGES			HEAT TREAT. SPEC.			<i>arc</i>	PX-567
ANGULAR DIM. ±						FINISH & SPEC. NO.		ELEC. DES. APP	MECH. DES. APP	A