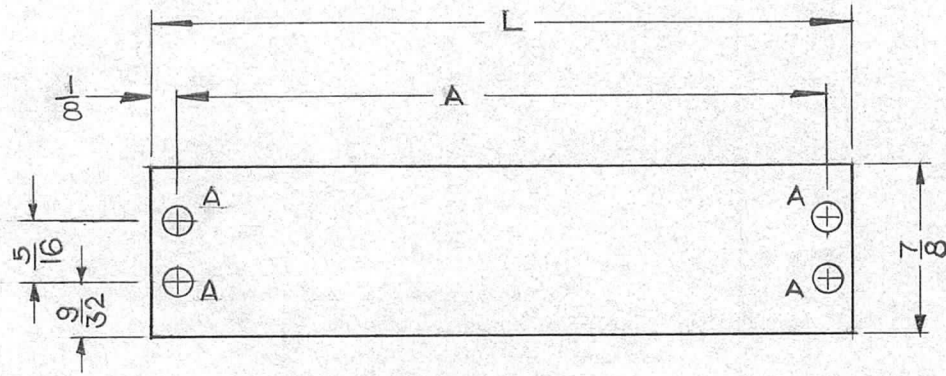


REQ. PER UNIT	USED ON		
	MODEL	ASS'Y. NO.	DATE
			3-30-60

PX-544 A

A ~ 9/64 D. HOLES 4 REQ.



TMC #	"A"	"L"
PX-544-1	3/4	1
PX-544-2	1 1/8	1 3/8
PX -3	1 1/2	1 3/4
PX -4	1 7/8	2 1/8
PX 5	2 1/4	2 1/2
PX 6	2 5/8	2 7/8
PX 7	3	3 1/4
PX 8	3 3/8	3 5/8
PX 9	3 3/4	4
PX 10	4 1/8	4 3/8
PX 11	4 1/2	4 3/4
PX 12	4 7/8	5 1/8
PX 13	5 1/4	5 1/2
PX 14	5 5/8	5 7/8
PX 15	6	6 1/4
PX 16	6 3/8	6 5/8
PX 17	6 3/4	7
PX 18	7 1/8	7 3/8
PX 19	7 1/2	7 3/4
PX 20	7 7/8	8 1/8
PX 21	8 1/4	8 1/2

For TM-102

REQ.	ITEM	PART NO.	DESCRIPTION				SYMBOL							
		1/8	THE TECHNICAL MATERIEL CORP.											
		STOCK SIZE	MAMARONECK, NEW YORK											
A	1	-1 NOS, REVISED	9-9-60	2926	CU	HL	S.D.	PHENOLIC	INSULATOR, TERMINAL, 1/8					
								MATERIAL	STRIP BARRIER					
TOLERANCES			SCALE:						XXXXP					
DEC. DIM. ±			MAXIMUM ALLOWABLE TOLERANCES HAVE BEEN DETERMINED AND ANY DEVIATIONS WILL BE CAUSE FOR REJECTION. REMOVE ALL BURRS AND SHARP EDGES											
FRAC. DIM. ± 1/64														
ANGULAR DIM. ±														
			TYPE & TEMPER		HEATTREAT. SPEC.		DRAWN		CHECKED		FINAL APPROVAL			
			BLACK				S.D.				PX-544 A			
			FINISH & SPEC. NO.				ELEC. DES. APP		MECH. DES. APP					