

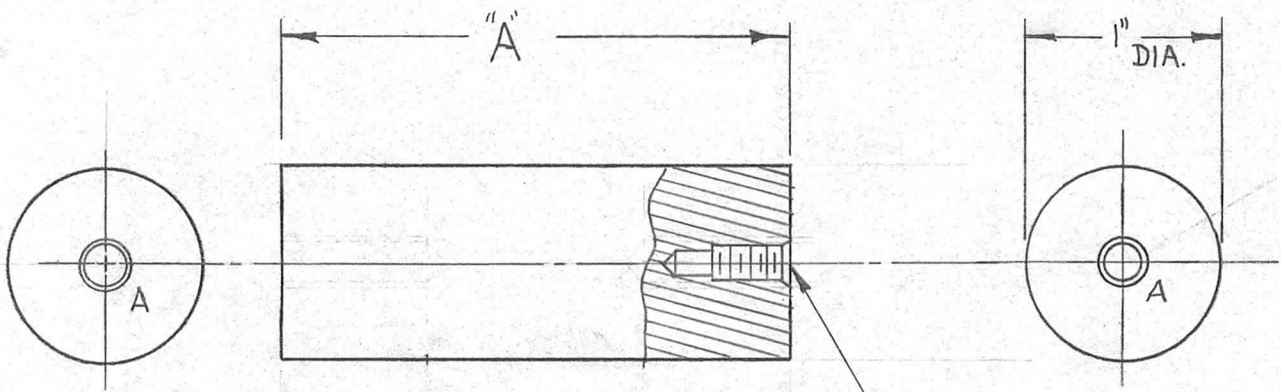
TMC PART NO.	LENGTH "A"	REQ. PER UNIT
PX 540 - 1	2 5/8	3
- 2	3	3
- 3	3 5/8	3

REQ. PER UNIT	USED ON		
	MODEL	ASS'Y. NO.	DATE
3	GPT-40K	10K-MOD	3-28-60

PX-540	B
--------	---

**HOLE LEGEND**

- A - HOLES TO BE MACHINED AS FOLLOWS: 2-REQ.
- 1- #5 (.203) DRILL TO .625 DP.
  - 2- 120° C SINK .24-.27 DIA.
  - 3- TAP .420 MIN. DEPTH, USE HELI COIL TAP #3 CPB
  - 4- MOUNT ITEM (1) 3/4 TO 1-1/2 PITCH BELOW SURFACE.
  - 5- BREAK OFF DRIVING TANG.



① MOUNT ITEM 1 IN ALL "A" HOLES AS SHOWN AFTER FINISHING. ("A" DETAIL TYP.)

							2	1	NT-139-SCI-20	INSERT, SCREW TYPE							
ISSUE	ITEM	CHANGED FROM	DATE	CH. NO.	DRAFTS	CHECKER	ENG. APP.	REQ.	ITEM	PART NO.	DESCRIPTION	SYMBOL					
B	2	"A" HOLES WERE DR#TAP 10-24	8-14-62	7015	GS.	JW	16	1" THK. STOCK SIZE EPOXY MATERIAL G-10 TYPE & TEMPER HEATTREAT. SPEC. DRAWN CHECKED FINAL APPROVAL MECH. DES. APP.									
	1	ITEM 1 ADDED													THE TECHNICAL MATERIEL CORP. MAMARONECK, NEW YORK		
A	1	REINSTATED - WAS OBS. BY TE102AGR41R	9/3/60	-	16		16								RF BAND SWITCH SPACERS		
TOLERANCES			SCALE:														
DEC. DIM. ±			MAXIMUM ALLOWABLE TOLERANCES HAVE BEEN DETERMINED AND ANY DEVIATIONS WILL BE CAUSE FOR REJECTION. REMOVE ALL BURRS AND SHARP EDGES														
FRAC. DIM. ± 1/64																	
ANGULAR DIM. ±																	
							FINISH & SPEC. NO.		ELEC. DES. APP		MECH. DES. APP		PX-540 B				