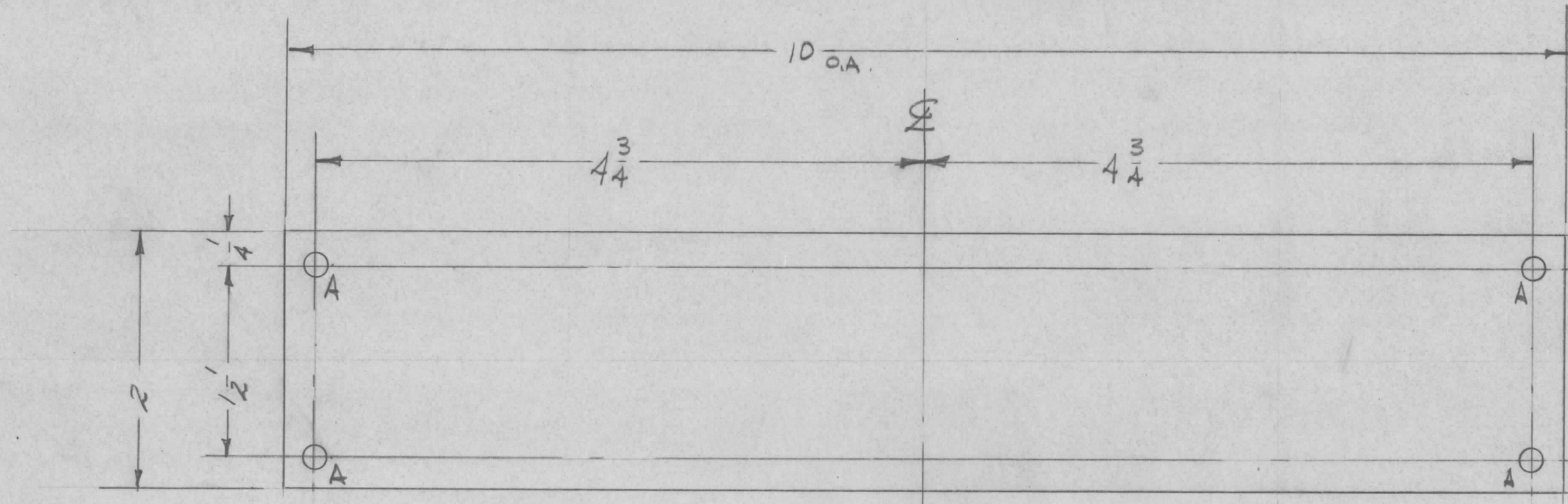


PX-458

A -  $\frac{11}{64}$  DIA.

4 REQ'D.



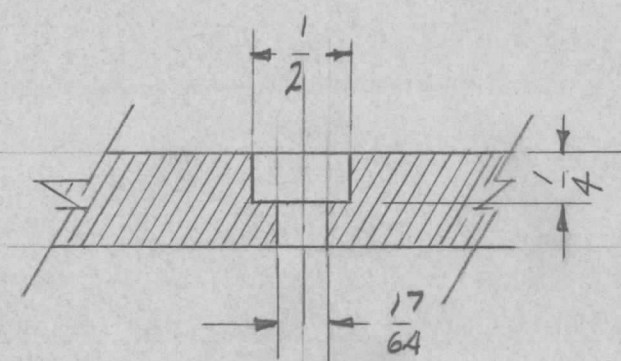
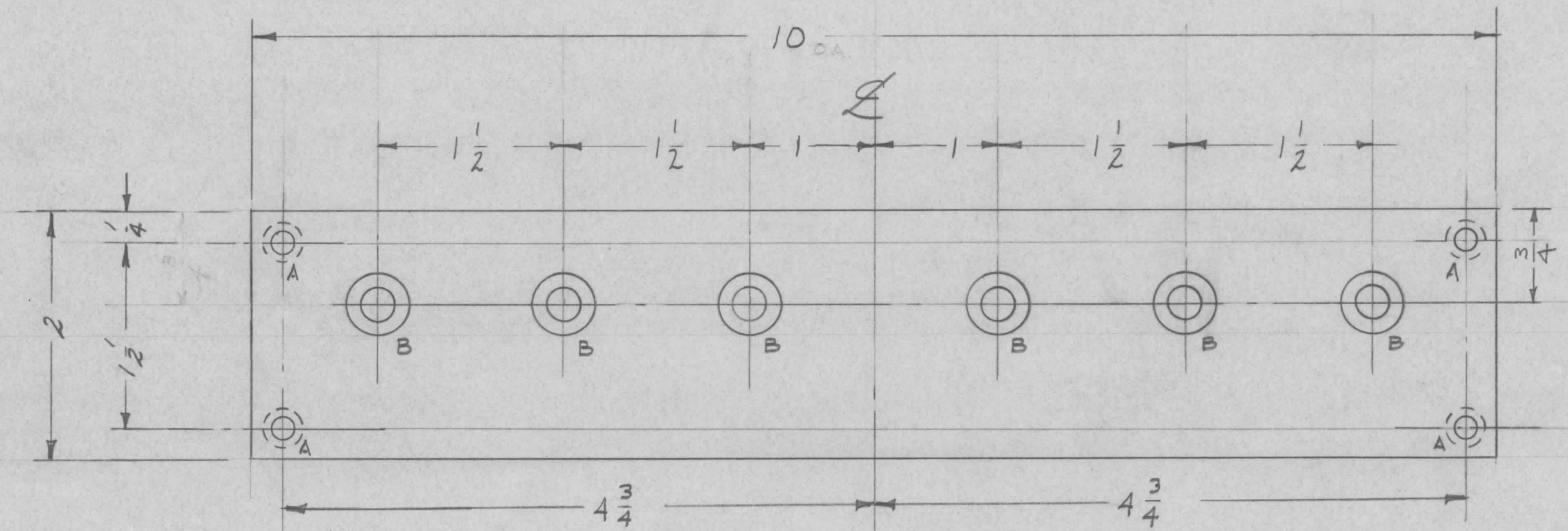
ISSUE	ITEM	CHANGED FROM	DATE	CH. NO.	DRAFTS	CHECKER	ENG. APP.
TOLERANCES			SCALE:				
DEC. DIM. $\pm$			MAXIMUM ALLOWABLE TOLERANCES HAVE BEEN DETERMINED AND ANY DEVIATIONS WILL BE CAUSE FOR REJECTION. REMOVE ALL BURRS AND SHARP EDGES				
FRAC. DIM. $\pm$							
ANGULAR DIM. $\pm$							

1	GPT-10K	Power Supply	2-25-59
REQ. PER UNIT	MODEL	PROJECT NO.	ASS'Y. NO.
USED ON			

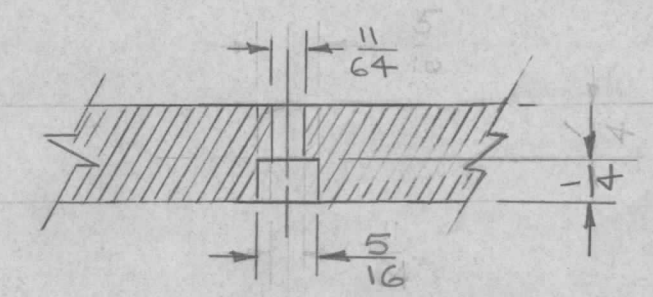
REQ. ITEM	PART NO.	DESCRIPTION	SYMBOL
	$\frac{1}{16}$ THICK	THE TECHNICAL MATERIEL CORP. MAMARONECK, NEW YORK	
	STOCK SIZE		
	PHENOLIC	SPACER, TERMINAL B.D.	
	MATERIAL	LING FILTER GPT-10K	
XXXP		<del>TORILED</del>	<del>HAQ</del>
TYPE & TEMPER	HEAT TREAT. SPEC.	DRAWN	CHECKED
NATURAL		S.D.	QB
FINISH & SPEC. NO.		ELEC. DES. APP.	MECH. DES. APP.
		PX 458	



PX-459



"B"  
6 - REQ'D.



"A"  
4 - REQ'D.

PROPERTY OF THE TECHNICAL MATERIEL CORPORATION RECEIVING THIS DRAWING

THE TECHNICAL MATERIEL CORPORATION claims proprietary right in the material disclosed herein. This drawing is issued in confidence for engineering information only and may not be reproduced or used in manufacture anything shown herein without permission from THE TECHNICAL MATERIEL CORPORATION to the user. This drawing is loaned for mutual assistance and is subject to recall at any time.

Property of:  
THE TECHNICAL MATERIEL CORPORATION  
MAMARONECK, NEW YORK

ISSUE	ITEM	CHANGED FROM	DATE	CH. NO.	DRAFTS	CHECKER	ENG. APP.
TOLERANCES			SCALE:				
DEC. DIM. ±			MAXIMUM ALLOWABLE TOLERANCES HAVE BEEN DETERMINED AND ANY DEVIATIONS WILL BE CAUSE FOR REJECTION.				
FRAC. DIM. ±			REMOVE ALL BURRS AND SHARP EDGES				
ANGULAR DIM. ±							

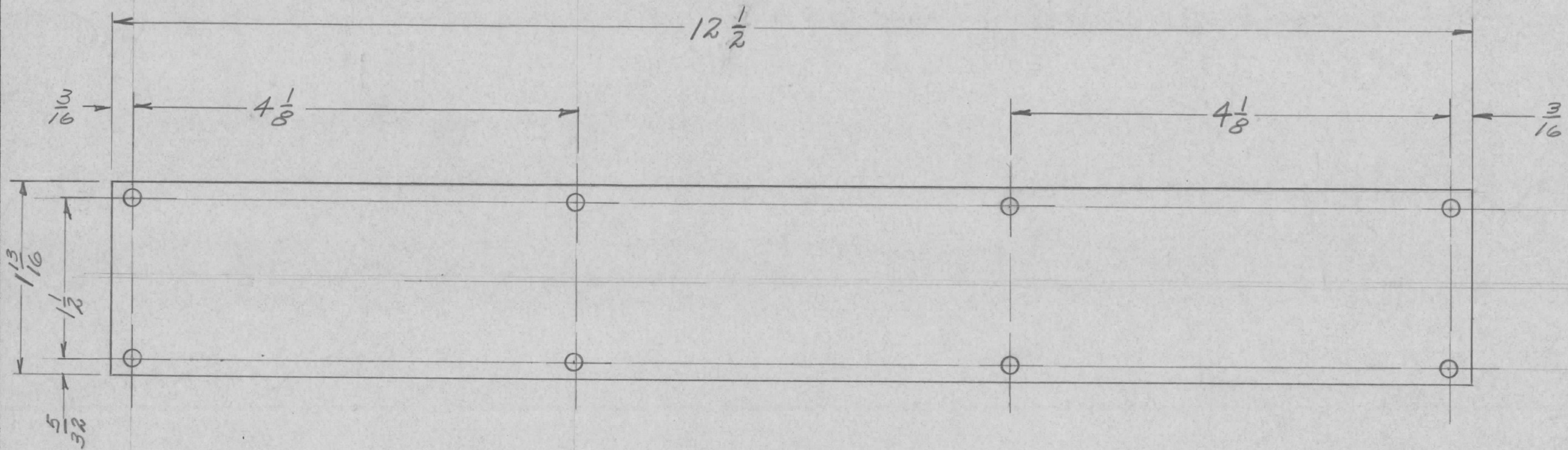
1	GPT-10K	Power Supply	2-25-59
REQ. PER UNIT	MODEL	PROJECT NO.	DATE
USED ON			

REQ. ITEM	PART NO.	DESCRIPTION	SYMBOL
1/2 THICK STOCK SIZE		THE TECHNICAL MATERIEL CORP. MAMARONECK, NEW YORK	
PHENOLIC MATERIAL		TERMINAL BOARD	
XXX		LIVE FILTER	GPT-10K
TYPE & TEMPER	HEAT TREAT. SPEC.	DRAWN	CHECKED
NATURAL		S.D.	Q.B.
FINISH & SPEC. NO.		ELEC. DES. APP.	MECH. DES. APP.
		PX-459	



PX-467 C

ALL HOLES -  $\frac{9}{64}$  (.141) DIA.



NOTICE TO PERSONS RECEIVING THIS DRAWING

THE TECHNICAL MATERIEL CORPORATION claims proprietary right in the material disclosed hereon. This drawing is issued in confidence for engineering information only and may not be reproduced or used to manufacture anything shown hereon without permission from THE TECHNICAL MATERIEL CORPORATION to the user. This drawing is loaned for mutual assistance and is subject to recall at any time.

Property of:

THE TECHNICAL MATERIEL CORPORATION  
MAMARONECK, NEW YORK

ISSUE	ITEM	CHANGED FROM	DATE	CH. NO.	DRAFTS	CHECKER	ENG. APP.
C	1	GPT-40K ADDED	1-27-60	-	WF	file	DS
B		REDUCED W/CHG.	11/22/59	1463	unc	file	

TOLERANCES: DEC. DIM.  $\pm$ , FRAC. DIM.  $\pm$ , ANGULAR DIM.  $\pm$

SCALE: *1/16*

MAXIMUM ALLOWABLE TOLERANCES HAVE BEEN DETERMINED AND ANY DEVIATIONS WILL BE CAUSE FOR REJECTION. REMOVE ALL BURRS AND SHARP EDGES

REQ. PER UNIT	MODEL	PROJECT NO.	ASS'Y. NO.	DATE
2	AT-101	GPT-40K		1-27-60
2	AM-109	GPT-40K		1-27-60
2	AX-173	GPT-10K		
1	AX-167	GPT-10K		

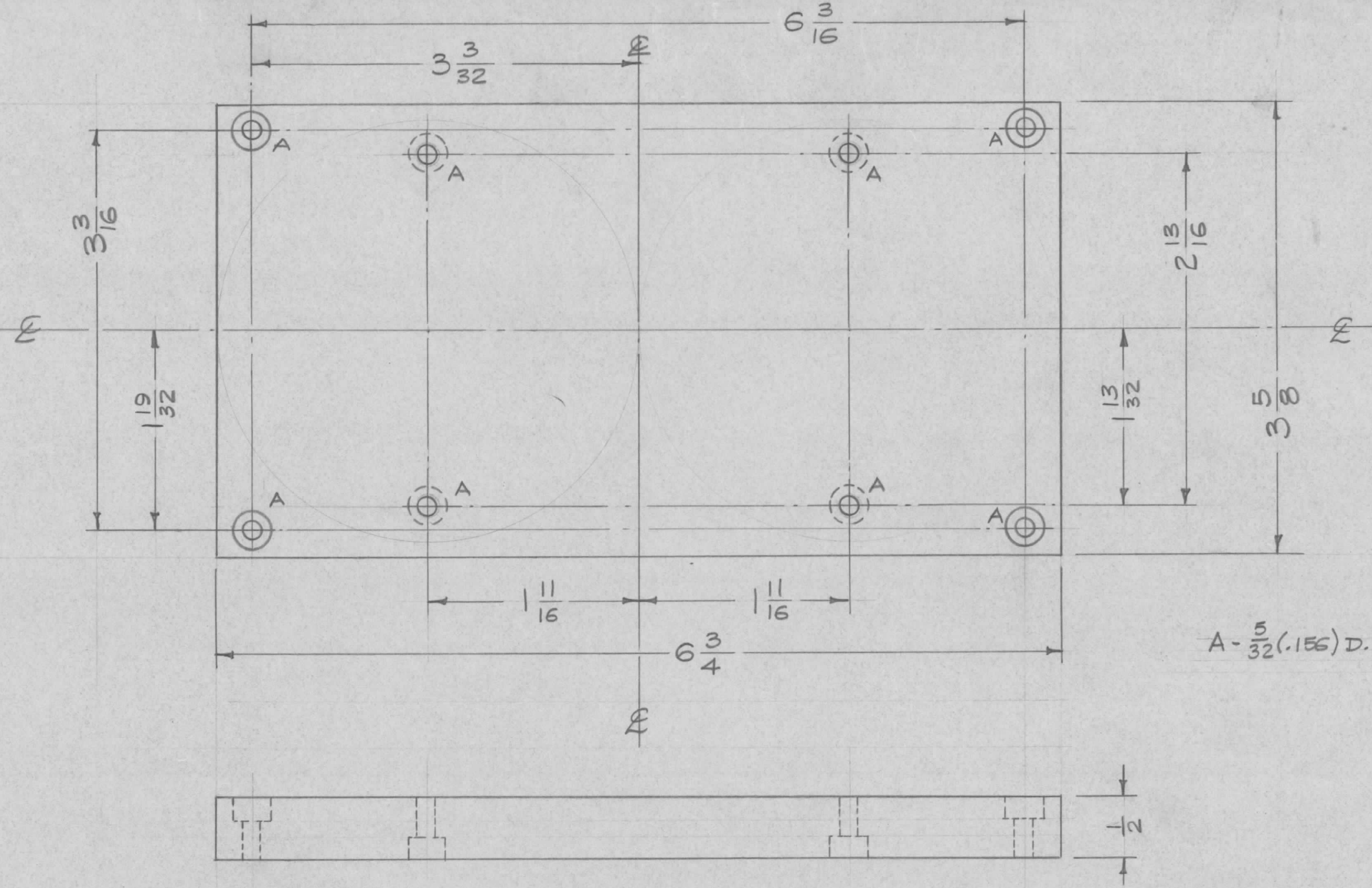
USED ON

REQ. ITEM	PART NO.	DESCRIPTION	SYMBOL
	<i>1/16</i>	THE TECHNICAL MATERIEL CORP. MAMARONECK, NEW YORK	
	STOCK SIZE		
	TRANSLUCENT WHITE PLEXIGLASS	WINDOW, METER LIGHT	
	MATERIAL		
		10/30/59 <i>unc</i>	
	TYPE & TEMPER	DRAWN	CHECKED
	HEAT TREAT. SPEC.		FINAL APPROVAL
	FINISH & SPEC. NO.	ELEC. DES. APP.	MECH. DES. APP.

PX-467 C



PX-476



**NOTICE TO PERSONS RECEIVING THIS DRAWING**  
 THE TECHNICAL MATERIEL CORPORATION claims proprietary right in the material disclosed herein. This drawing is issued in confidence for engineering information only and may not be reproduced or used to manufacture anything shown herein without permission from THE TECHNICAL MATERIEL CORPORATION to the user. This drawing is loaned for mutual assistance and is subject to recall at any time.

Property of:  
 THE TECHNICAL MATERIEL CORPORATION  
 MAMARONECK, NEW YORK

A -  $\frac{5}{32}$  (.156) D., Drill thru & C'bore  $\frac{5}{16}$  D. x  $\frac{3}{16}$  dp.  
 8 Req.

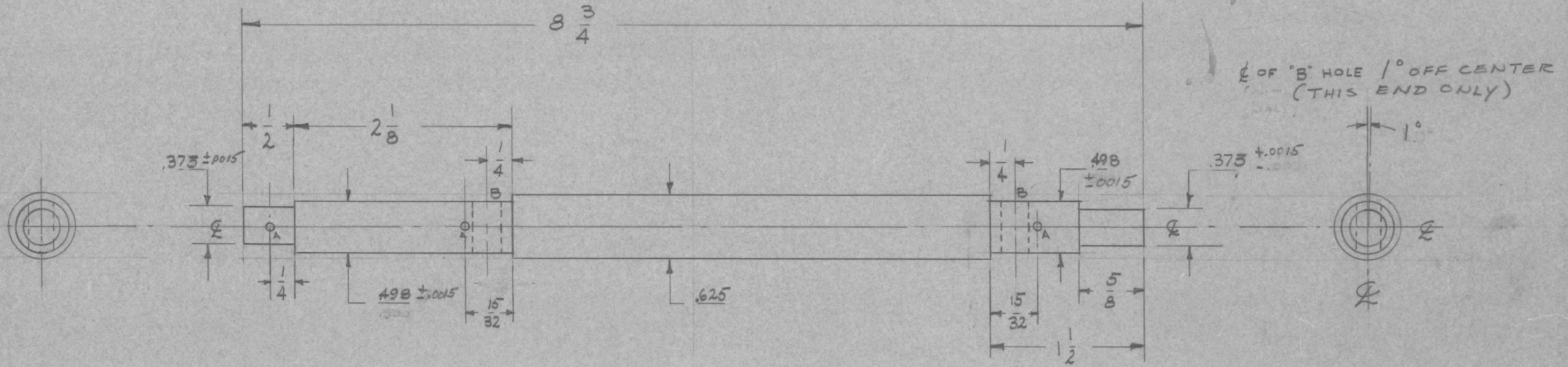
ISSUE	ITEM	CHANGED FROM	DATE	CH. NO.	DRAFTS	CHECKER	ENG. APP.
TOLERANCES			SCALE: FULL (Do Not Scale)				
DEC. DIM. $\pm$			MAXIMUM ALLOWABLE TOLERANCES HAVE BEEN DETERMINED AND ANY DEVIATIONS WILL BE CAUSE FOR REJECTION.				
FRAC. DIM. $\pm$ 1/64			REMOVE ALL BURRS AND SHARP EDGES				
ANGULAR DIM. $\pm$							

1	PS-5	PAL-1K		6-15-59
REQ. PER UNIT	MODEL	PROJECT NO.	ASS'Y. NO.	DATE
USED ON				

REQ. ITEM	PART NO.	DESCRIPTION		SYMBOL
	1/2 THK.	THE TECHNICAL MATERIEL CORP.		
	STOCK SIZE	MAMARONECK, NEW YORK		
	PHENOLIC	BOARD, TUBE MOUNTING		
	MATERIAL			
XXXXP		164/15/59		
TYPE & TEMPER	HEAT TREAT. SPEC.	DRAWN	CHECKED	FINAL APPROVAL
NATURAL				
FINISH & SPEC. NO.		ELEC. DES. APP.	MECH. DES. APP.	PX-476



PX-480



A - #51 DR. (.087 D.)      3 REQ'D.  
 B 17/64 (.265) D.      2 REQ'D.

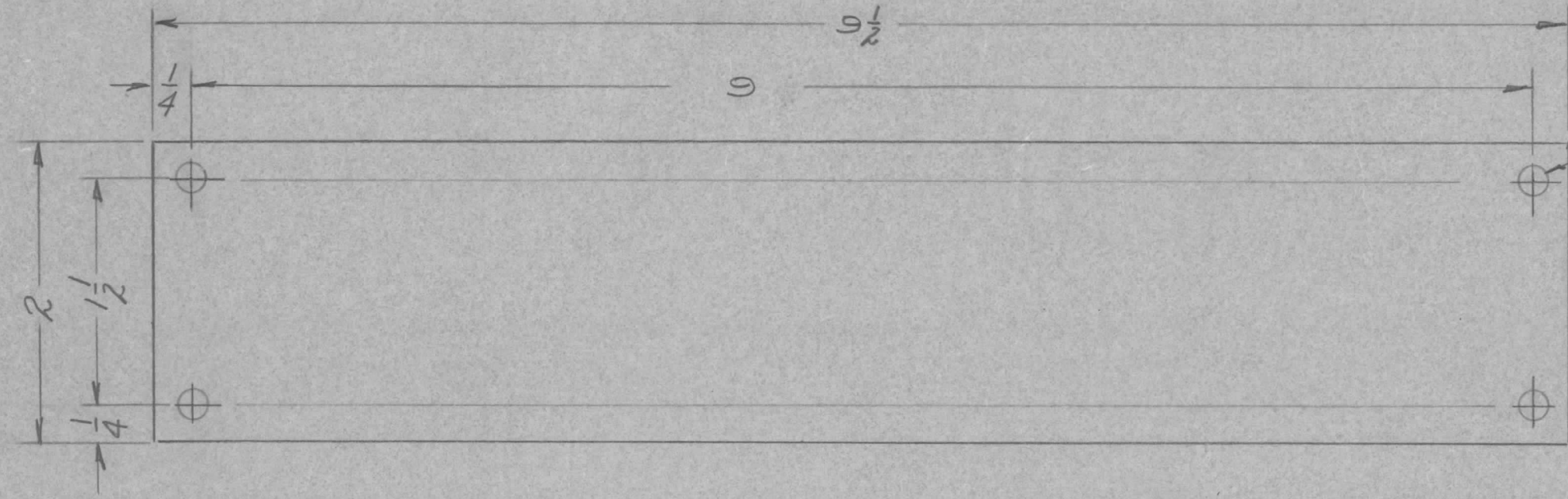
ISSUE	ITEM	CHANGED FROM	DATE	CH. NO.	DRAFTS	CHECKER	ENG. APP.
TOLERANCES							
DEC. DIM. ± .002			SCALE: FULL				
FRAG. DIM. ± 1/64			MAXIMUM ALLOWABLE TOLERANCES HAVE BEEN DETERMINED AND ANY DEVIATIONS WILL BE CAUSE FOR REJECTION. REMOVE ALL BURRS AND SHARP EDGES				
ANGULAR DIM. ± .01							

1	ATS-50(90)T02		6-8-59
REQ. PER UNIT	MODEL	PROJECT NO.	ASSY. NO.
USED ON			

REQ. ITEM	PART NO.	DESCRIPTION	SYMBOL
5/8 DIA.		THE TECHNICAL MATERIEL CORP. MAMARONECK, NEW YORK	SHAFT, DRIVE
STOCK SIZE			
PHENOLIC			
MATERIAL			
KKKP			
TYPE & TEMPER	HEATTREAT. SPEC.	DRAWN	CHECKED
NATURAL			
FINISH & SPEC. NO.	ELEC. DES. APP.	MECH. DES. APP.	PX-480



PX-485



(4)  $\frac{13}{64}$  (.203) DIA. HOLE

65

NOTICE TO PERSONS RECEIVING THIS DRAWING

THE TECHNICAL MATERIEL CORPORATION claims proprietary right in the material disclosed hereon. This drawing is issued in confidence for engineering information only and may not be reproduced or used to manufacture anything shown hereon without permission from THE TECHNICAL MATERIEL CORPORATION to the user. This drawing is loaned for mutual assistance and is subject to recall at any time.

Property of:  
THE TECHNICAL MATERIEL CORPORATION  
MAMARONECK, NEW YORK

ISSUE	ITEM	CHANGED FROM	DATE	CH. NO.	DRAFTS	CHECKER	ENG. APP.
TOLERANCES			SCALE:				
DEC. DIM. ±			MAXIMUM ALLOWABLE TOLERANCES HAVE BEEN DETERMINED AND ANY DEVIATIONS WILL BE CAUSE FOR REJECTION.				
FRAC. DIM. ±			REMOVE ALL BURRS AND SHARP EDGES				
ANGULAR DIM. ±							

1	GPT-10K			7/1/53
REQ. PER UNIT	MODEL	PROJECT NO.	ASSY. NO.	DATE
USED ON				

REQ. ITEM	PART NO.	DESCRIPTION			SYMBOL
3/16 THICK		THE TECHNICAL MATERIEL CORP.			
STOCK SIZE		MAMARONECK, NEW YORK			
PHENOLIC		BOARD, INSULATOR			
MATERIAL		LINE FILTER			
XXXXP		7/1/53	[Signature]	[Signature]	
TYPE & TEMPER	HEAT TREAT. SPEC.	DRAWN	CHECKED	FINAL APPROVAL	
NATURAL				PX-485	
FINISH & SPEC. NO.	ELEC. DES. APP	MECH. DES. APP			



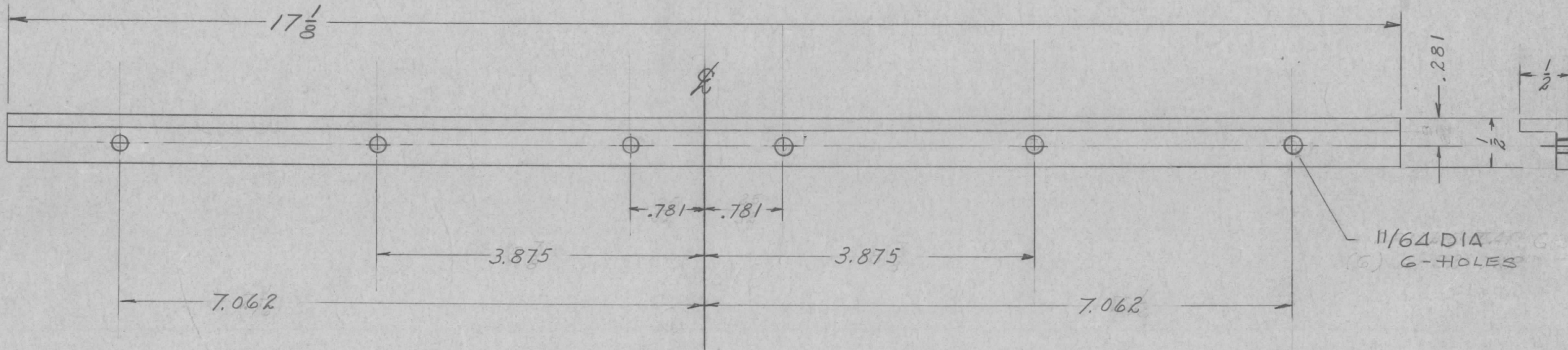
PM-490 C

NOTICE TO PERSONS RECEIVING THIS DRAWING

THE TECHNICAL MATERIEL CORPORATION claims proprietary right in the material disclosed hereon. This drawing is issued in confidence for engineering information only and may not be reproduced or used to manufacture anything shown hereon without permission from THE TECHNICAL MATERIEL CORPORATION to the user. This drawing is loaned for mutual assistance and is subject to recall at any time.

Property of:

THE TECHNICAL MATERIEL CORPORATION  
MAMARONECK, NEW YORK



ISSUE	ITEM	CHANGED FROM	DATE	CH. NO.	DRAFTS	CHECKER	ENG. APP.
C		11/64 DIA WAS DRILLED TAP 6-32-THK MAT. WAS 1/8"	3-28-83	22000	G.D.L.		
B	1	S-404 WAS S-101	12/15/59	1001	AB		EYN
A	1	DECIMAL DIMS. WERE FRACTIONAL, ADDED TOLS	6/26/58	401			

REQ. PER UNIT	MODEL	PROJECT NO.	ASS'Y. NO.	DATE
2	BJP-2			
2	BJP-4			10-2-58
1	SPP-3			

REQ. ITEM	PART NO.	DESCRIPTION	SYMBOL
	12-12-081THK	THE TECHNICAL MATERIEL CORP. MAMARONECK, NEW YORK	
	ALUMINUM	BRACE PANEL	
	5052-H32		
	S-404 YELLOW IRIDITE		

TOLERANCES: DEC. DIM. ± .002, FRAC. DIM. ± 1/64, ANGULAR DIM. ±

SCALE: 1" = 1"

MAXIMUM ALLOWABLE TOLERANCES HAVE BEEN DETERMINED AND ANY DEVIATIONS WILL BE CAUSE FOR REJECTION. REMOVE ALL BURRS AND SHARP EDGES

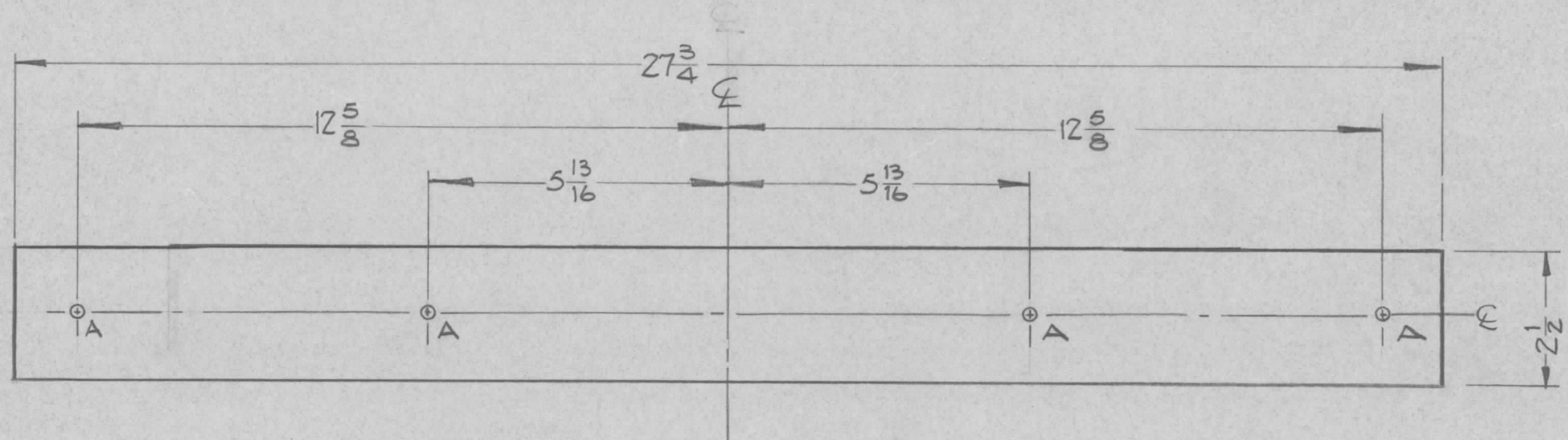
5/15/58  
DRAWN: [Signature]  
CHECKED: [Signature]  
FINAL APPROVAL: [Signature]

FINISH & SPEC. NO. ELEC. DES. APP. MECH. DES. APP.

PM-490 C



PX-494



A ~ .166 Dia. (#19Dr) 4 Req.

NOTICE TO PERSONS RECEIVING THIS DRAWING

THE TECHNICAL MATERIEL CORPORATION claims proprietary right in the material disclosed hereon. This drawing is issued in confidence for engineering information only and may not be reproduced or used to manufacture anything shown hereon without permission from THE TECHNICAL MATERIEL CORPORATION to the user. This drawing is loaned for mutual assistance and is subject to recall at any time.

Property of:  
THE TECHNICAL MATERIEL CORPORATION  
MAMARONECK, NEW YORK

ISSUE	ITEM	CHANGED FROM	DATE	CH. NO.	DRAFTS	CHECKER	ENG. APP.
TOLERANCES			SCALE: 1/3 size				
DEC. DIM. ±			MAXIMUM ALLOWABLE TOLERANCES HAVE BEEN DETERMINED AND ANY DEVIATIONS WILL BE CAUSE FOR REJECTION. REMOVE ALL BURRS AND SHARP EDGES				
FRAC. DIM. ±							
ANGULAR DIM. ±							

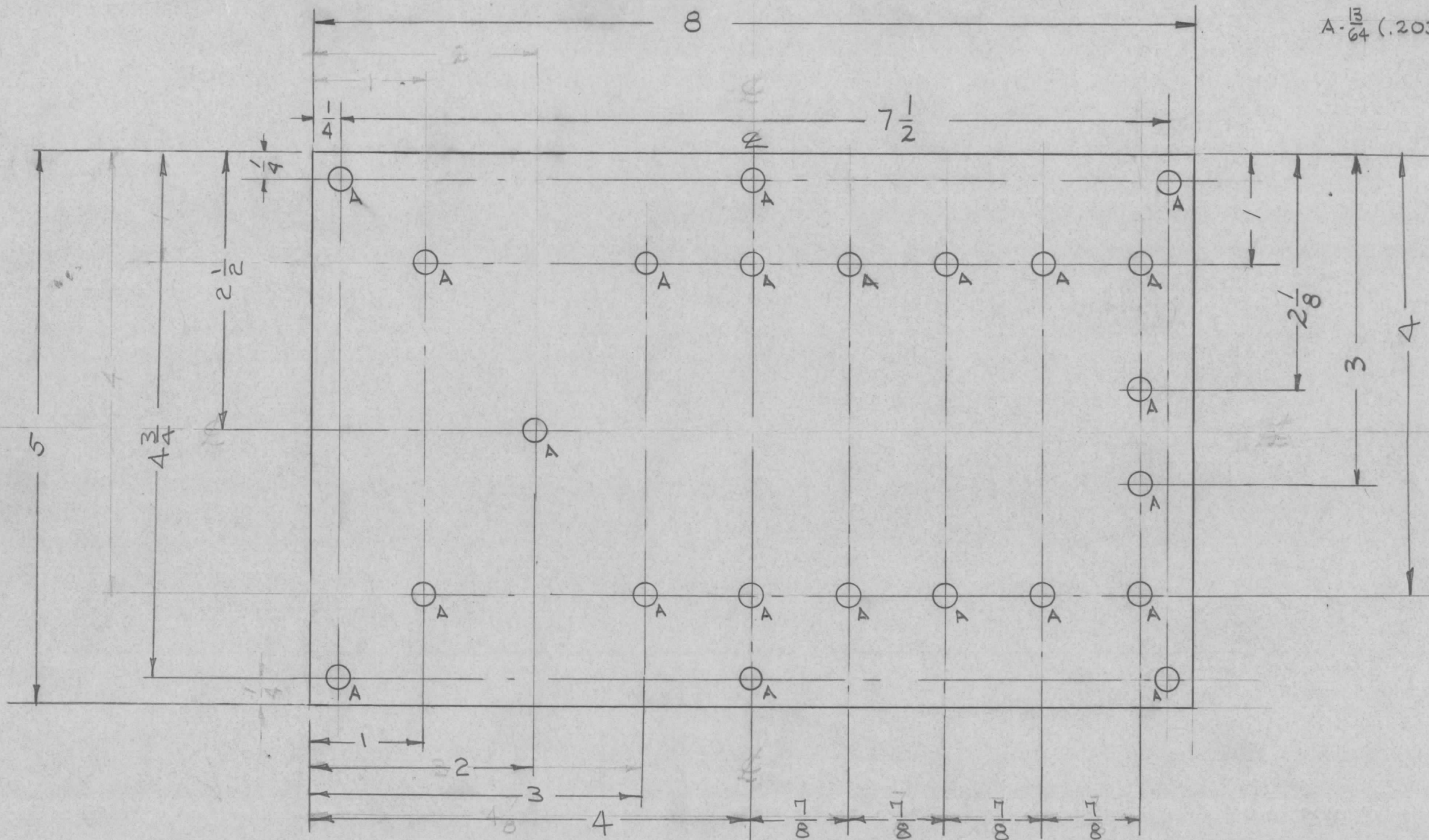
1	GPT-10K	Power Supply		11-17-59
REQ. PER UNIT	MODEL	PROJECT NO.	ASS'Y. NO.	DATE
USED ON				

REQ. ITEM	PART NO.	DESCRIPTION	SYMBOL
	1/8	THE TECHNICAL MATERIEL CORP.	
	STOCK SIZE	MAMARONECK, NEW YORK	
	PHENOLIC	INSULATOR STRIP	
	MATERIAL	HV CONTACTS (TI 105)	
XXXXP		DM	File
TYPE & TEMPER	HEAT TREAT. SPEC.	DRAWN	CHECKED
NATURAL			File
FINISH & SPEC. NO.	ELEC. DES. APP.	MECH. DES. APP.	PX-494



PX-495

A- $\frac{13}{64}$  (.203) DIA. 23 REQ'D.



REF: LD-658

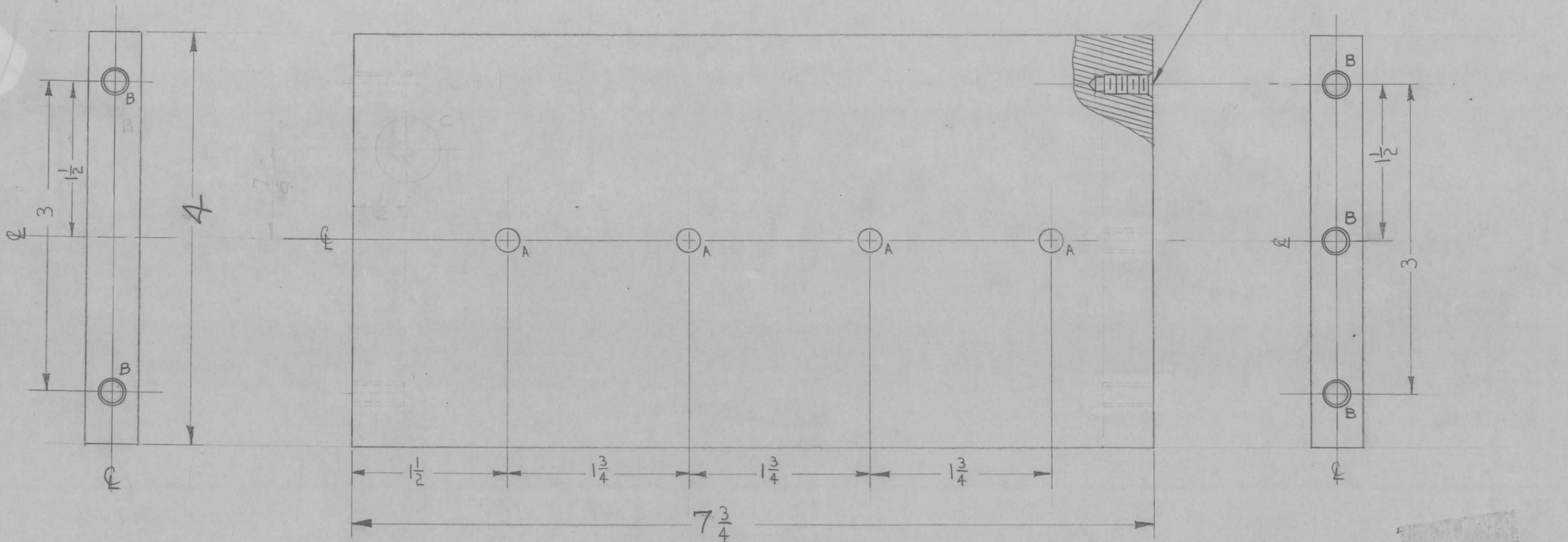
ISSUE	ITEM	CHANGED FROM	DATE	CH. NO.	DRAFTS	CHECKER	ENG. APP.
TOLERANCES		SCALE:					
DEC. DIM. $\pm$		MAXIMUM ALLOWABLE TOLERANCES HAVE BEEN DETERMINED AND ANY DEVIATIONS WILL BE CAUSE FOR REJECTION.					
FRAC. DIM. $\pm$		REMOVE ALL BURRS AND SHARP EDGES					
ANGULAR DIM. $\pm$							

1	RAK-9	SBT-1K		12-14-59
REQ. PER UNIT	MODEL	PROJECT NO.	ASS'Y. NO.	DATE
USED ON				

REQ. ITEM	PART NO.	DESCRIPTION	SYMBOL
$\frac{1}{8}$		THE TECHNICAL MATERIEL CORP. MAMARONECK, NEW YORK	
	STOCK SIZE	POWER INPUT, TERMINAL BOARD	
	MATERIAL		
XXXXP			
	TYPE & TEMPER	DRAWN	CHECKED
	HEAT TREAT. SPEC.		FINAL APPROVAL
	FINISH & SPEC. NO.		PX-495
		ELEC. DES. APP.	MECH. DES. APP.



PX-499 B



HOLE LEGEND

- A - 1/32 (.218) DIA. 4-REQ
- B - HOLES TO BE MACHINED AS FOLLOWS: 5 REQ.
  - 1- 13/64 DRILL (.203) TO .562 DP
  - 2- 120° C'SINK .22-.25 DIA.
  - 3- TAP .410 MIN DEPTH, USE HELI COIL TAP #3 FPB.
  - 4- MOUNT ITEM (1) 3/4 TO 1-1/2 PITCH BELOW SURFACE
  - 5- BREAK OFF DRIVING TANG

REF: LD-671(2)

ISSUE ITEM	CHANGED FROM	DATE	CH. NO.	DRAFTS	CHECKER	ENG. APP.
B 2	"B" HOLES WERE DR & TAP 10-32 x 1/2 DP	8-10-62	7008	GS	Wde	16
A 1	"C" HOLE DELETED	2-11-60	-	MF	2B	

SCALE: FULL

TOLERANCES: DEC. DIM. ±, FRAC. DIM. ± 1/64, ANGULAR DIM. ±

MAXIMUM ALLOWABLE TOLERANCES HAVE BEEN DETERMINED AND ANY DEVIATIONS WILL BE CAUSE FOR REJECTION. REMOVE ALL BURRS AND SHARP EDGES

1	AX-212	GPT-40K		1/13/60
REQ. PER UNIT	MODEL	PROJECT NO.	ASS'Y. NO.	DATE
USED ON				

5	1	NT-139-SFI-20	INSERT, SCREW THREAD	
REQ. ITEM	PART NO.		DESCRIPTION	SYMBOL
1/2 THICK			THE TECHNICAL MATERIEL CORP. MAMARONECK, NEW YORK	
PHENOLIC			BOARD, RESISTOR MTG., SMALL (CROWBAR DRAWER)	
MATERIAL				
XXX P LAMINATE			MF	Wde
TYPE & TEMPER			HEAT TREAT. SPEC.	FINAL APPROVAL
NATURAL			Em	RLK
FINISH & SPEC. NO.			ELEC. DES. APP.	MECH. DES. APP.
				PX-499 B