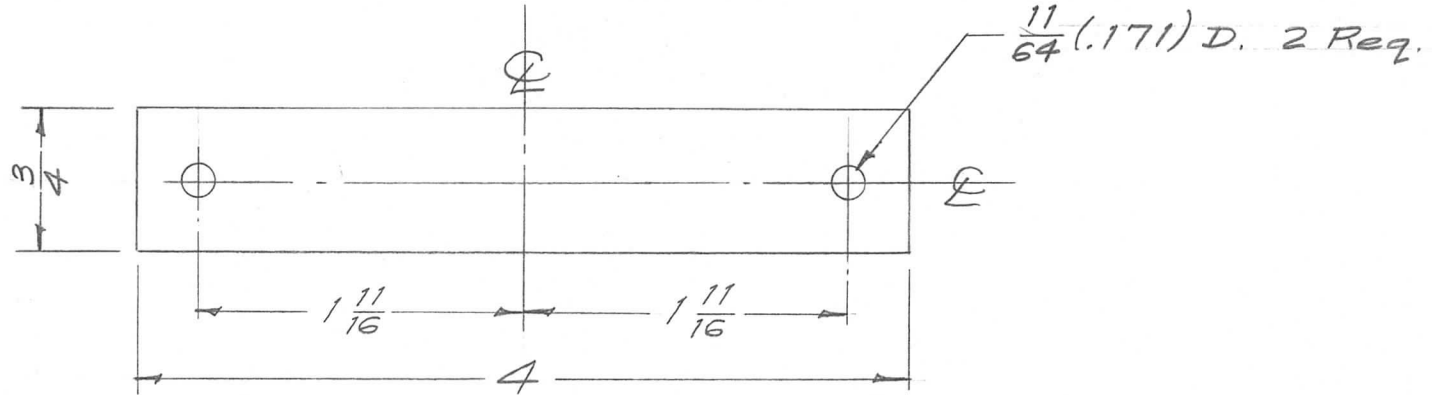


REQ. PER UNIT	USED ON		
	MODEL	ASS'Y. NO.	DATE
2	TR-145	A-1491	2-5-58
2	TR-146	A-1492	2-5-58

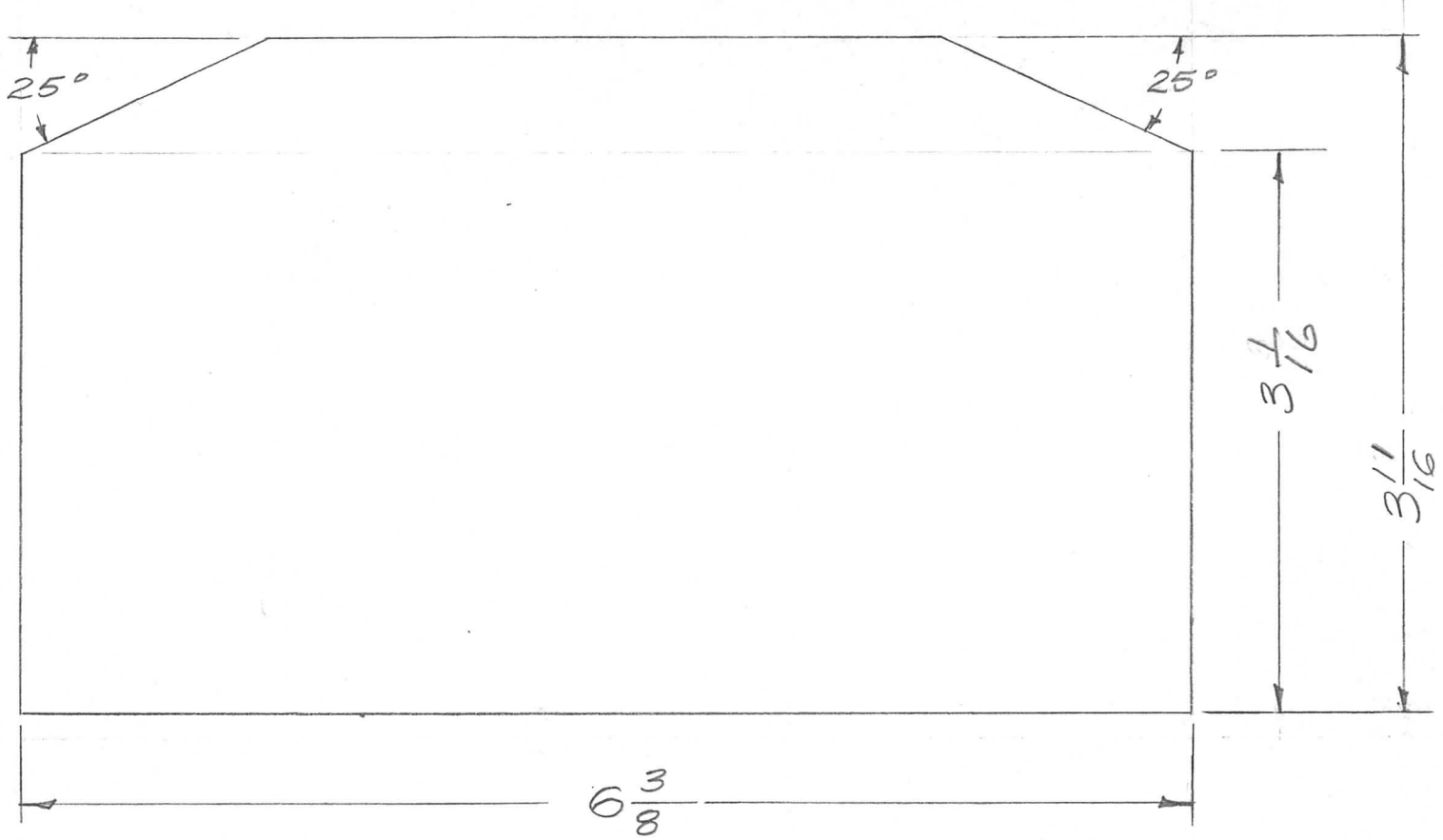
PX-400



ISSUE	ITEM	CHANGED FROM	DATE	CH. NO.	DRAFTS	CHECKER	ENG. APP.	REQ. ITEM	PART NO.	DESCRIPTION	SYMBOL		
										THE TECHNICAL MATERIEL CORP. MAMARONECK, NEW YORK			
									$\frac{1}{4}$ THK. STOCK SIZE	PLATE, TRANSFORMER MTG.			
									Phenolic				
									MATERIAL				
								XXXXP	N	10 ² / ₅ /58	AND	SR	
TOLERANCES			SCALE: FULL					TYPE & TEMPER		HEAT TREAT. SPEC.	DRAWN	CHECKED	FINAL APPROVAL
DEC. DIM. \pm			MAXIMUM ALLOWABLE TOLERANCES HAVE BEEN DETERMINED AND ANY DEVIATIONS WILL BE CAUSE FOR REJECTION. REMOVE ALL BURRS AND SHARP EDGES					NATURAL					
FRAC. DIM. \pm $\frac{1}{64}$								FINISH & SPEC. NO.		ELEC. DES. APP.	MECH. DES. APP.		
ANGULAR DIM. \pm												PX-400	

REQ. PER UNIT	USED ON		
	MODEL	ASS'Y. NO.	DATE
1	MR-112		2-6-58
1	MR-113		5-21-58
1	SWR-3000 PH		6-10-58

PX-401 C



NOTE: GLASS TO BE FREE OF SCRATCHES AND FLAWS.

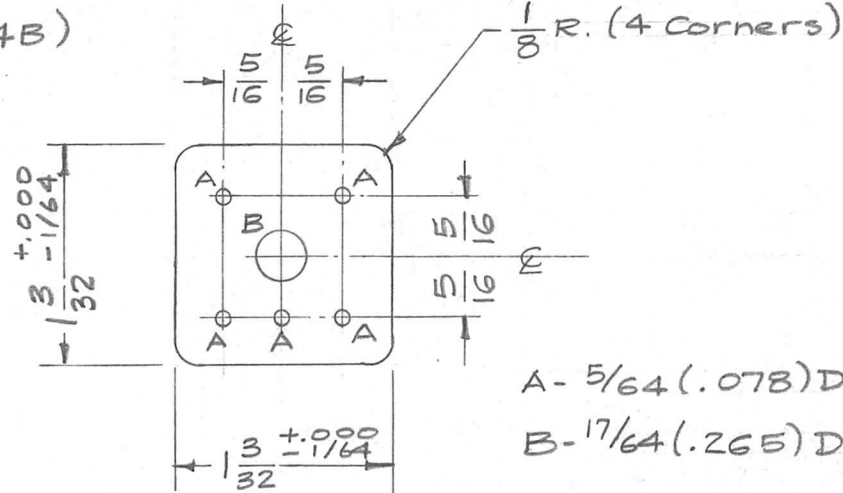
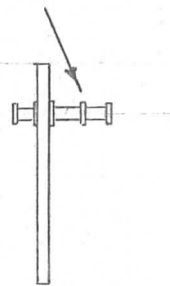
REQ. ITEM	PART NO.	DESCRIPTION	SYMBOL
C #	NOTE: ADDED		
B 1	DIM. CHG: $3 \frac{1}{16}$ WAS $3 \frac{1}{16}$ $3 \frac{1}{16}$ " $3 \frac{1}{16}$	THE TECHNICAL MATERIEL CORP. MAMARONECK, NEW YORK	
A 1	REDRWN. TO SCALE 25° WAS 30°	WINDOW, METER	
ISSUE ITEM	CHANGED FROM	DATE	CH. NO.
TOLERANCES		SCALE: FULL	
DEC. DIM. \pm		MAXIMUM ALLOWABLE TOLERANCES HAVE BEEN DETERMINED AND ANY DEVIATIONS WILL BE CAUSE FOR REJECTION.	
FRAC. DIM. \pm $1/64$		REMOVE ALL BURRS AND SHARP EDGES	
ANGULAR DIM. \pm			
REQ. ITEM	PART NO.	DESCRIPTION	SYMBOL
	$3/32$ THK.		
	STOCK SIZE		
	GLASS		
	MATERIAL		
	CLEAR		
	TYPE & TEMPER	HEAT TREAT. SPEC.	
		DRAWN	CHECKED
			FINAL APPROVAL
	FINISH & SPEC. NO.	ELEC. DES. APP.	MECH. DES. APP.

PX-401 C

PX-403

REQ. PER UNIT	USED ON		
	MODEL	ASS'Y. NO.	DATE
1	SBE-2	A-1512	3-12-58
1	SBE-3	AX-204	11-30-59
1	CMO	A-1906	
1	CSS-1	NF-106	
1	CLL	A-1905	
1	GPR-92	A-2132	12-13-62

Assemble Terminals (TE-16B-4B) in "A" Holes as shown. 5 Req.



A- 5/64 (.078) D. 5 Req.
 B- 17/64 (.265) D. 1 Req.

NOTICE TO PERSONS RECEIVING THIS DRAWING

THE TECHNICAL MATERIEL CORPORATION claims proprietary right in the material disclosed hereon. This drawing is issued in confidence for engineering information only and may not be reproduced or used to manufacture anything shown hereon without permission from THE TECHNICAL MATERIEL CORPORATION to the user. This drawing is loaned for mutual assistance and is subject to recall at any time.

Property of:

THE TECHNICAL MATERIEL CORPORATION
 MAMARONECK, NEW YORK

ISSUE	ITEM	CHANGED FROM	DATE	CH. NO.	DRAFTS	CHECKER	ENG. APP.	REQ. ITEM	PART NO.	DESCRIPTION	SYMBOL
								1/16 THK.		THE TECHNICAL MATERIEL CORP. MAMARONECK, NEW YORK	
								STOCK SIZE		TERMINAL BOARD, TRANSFORMER	
								Phenolic		5 LUG	
								MATERIAL			
								xxxp laminate		16 ³ / ₁₂ /58	JAD
								TYPE & TEMPER	HEAT TREAT. SPEC.	DRAWN	CHECKED
								Natural			AMB
								FINISH & SPEC. NO.		ELEC. DES. APP.	MECH. DES. APP.
											PX-403 A

DEC. DIM. \pm
 FRAC. DIM. \pm 1/64
 ANGULAR DIM. \pm

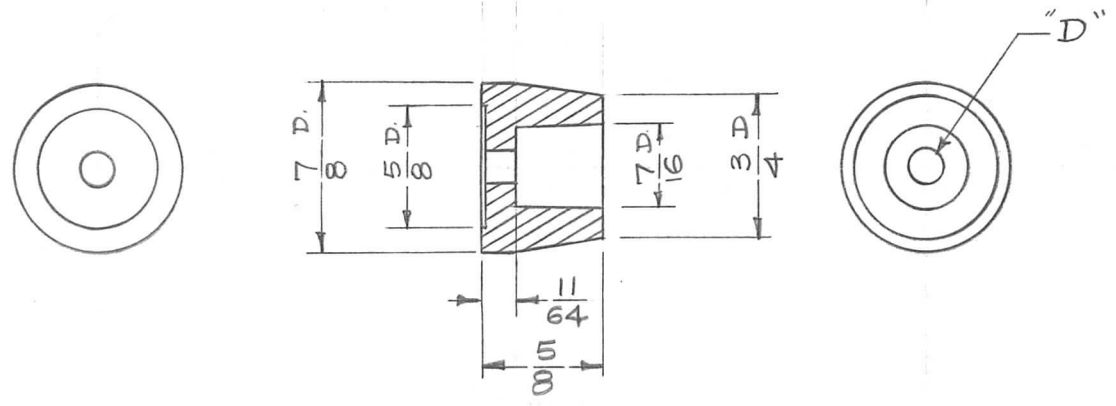
SCALE:
 MAXIMUM ALLOWABLE TOLERANCES HAVE BEEN DETERMINED AND ANY DEVIATIONS WILL BE CAUSE FOR REJECTION.
 REMOVE ALL BURRS AND SHARP EDGES

TMC NO.	"D" HOLE	MFG. NO.
PX-404-1	.150 Thru	4000
PX-404-2	.168 Thru	4000A
PX-404-3	.190 Thru	4000C
PX-404-4	10-24 Thd. Thru	4000B

REQ. PER UNIT	USED ON		PX-404
	MODEL	ASS'Y. NO.	
4	ATS-MCU		4-2-58

4 ATS-MCU-2

6-8-59
STANDARD DRAWING

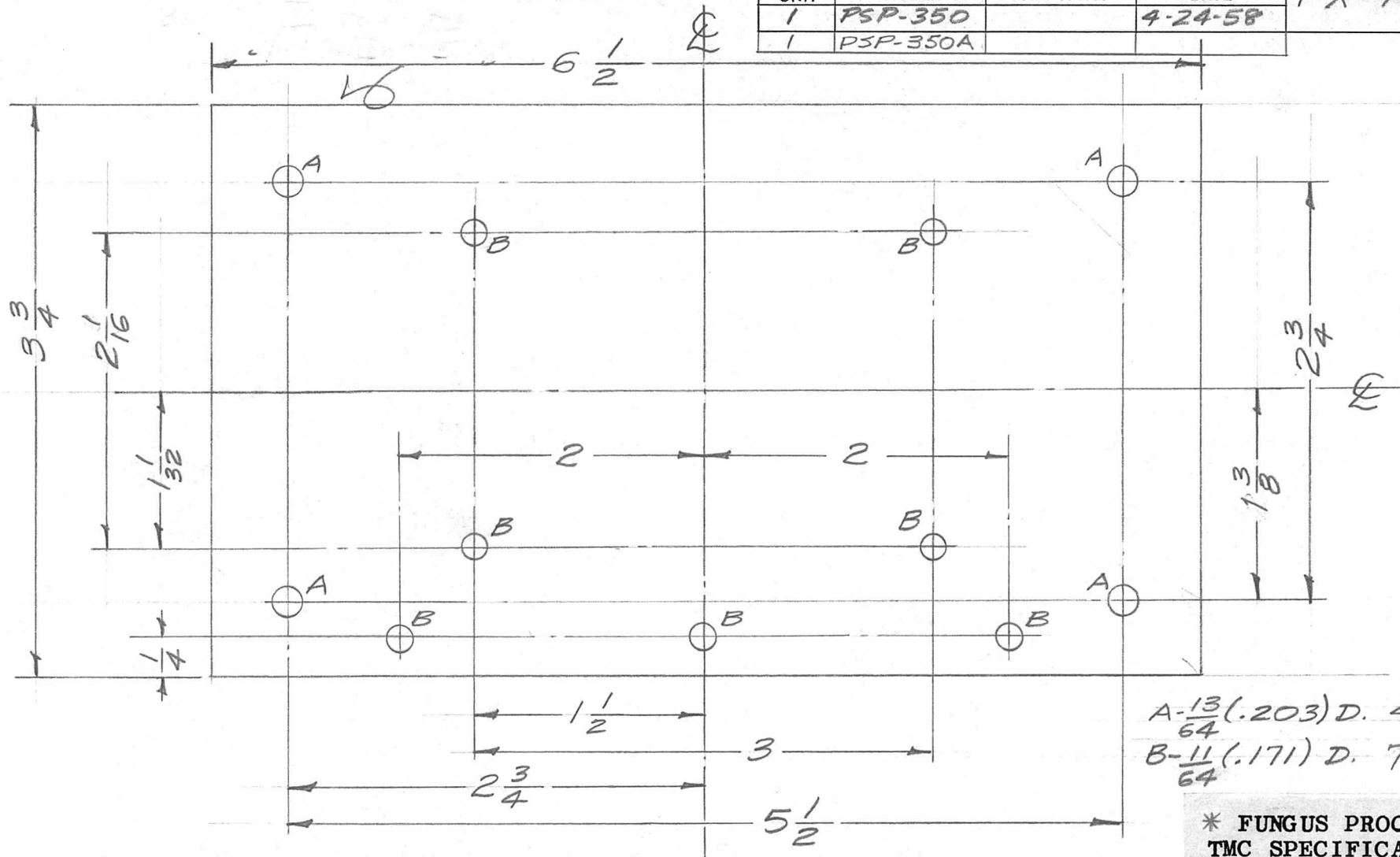


Ref: HARRY DAVIES MOLDING Co. MOLD 4000

REQ. ITEM	PART NO.	DESCRIPTION	SYMBOL
		THE TECHNICAL MATERIEL CORP. MAMARONECK, NEW YORK	
	STOCK SIZE	MEG, EQUIPMENT	
	MATERIAL		
ISSUE	ITEM	CHANGED FROM	DATE
TOLERANCES		SCALE:	
DEC. DIM. ±	MAXIMUM ALLOWABLE TOLERANCES HAVE BEEN DETERMINED AND ANY DEVIATIONS WILL BE CAUSE FOR REJECTION.		
FRAC. DIM. ±	REMOVE ALL BURRS AND SHARP EDGES		
ANGULAR DIM. ±			
General Purpose	HEAT TREAT. SPEC.	DRAWN	CHECKED
BLACK			
FINISH & SPEC. NO.	ELEC. DES. APP.	MECH. DES. APP.	PX-404

REQ. PER UNIT	USED ON		
	MODEL	ASS'Y. NO.	DATE
1	PSP-350		4-24-58
1	PSP-350A		

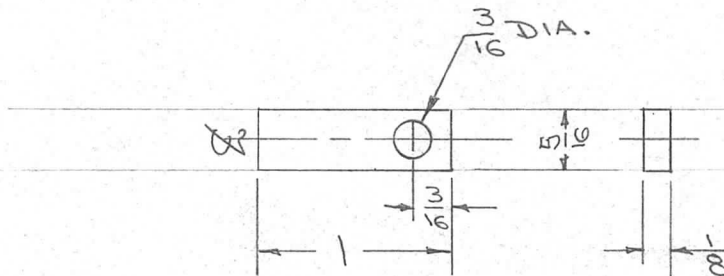
PX-406 C



* FUNGUS PROOFING PER TMC SPECIFICATION S-113

REQ.	ITEM	PART NO.	DESCRIPTION				SYMBOL	
C		S113 ADDED	4-13-64	11186	A.M.	<i>File</i>	<i>QA</i>	THE TECHNICAL MATERIEL CORP. MAMARONECK, NEW YORK BASE, RECTIFIER
B	1	DWG UPDATED	11/8/63	10348	<i>MD</i>	<i>MD</i>		
A	1	3 "B" Holes Added 1/4" From Btm.	5/5/58	1	16	<i>File</i>	<i>ah</i>	
ISSUE	ITEM	CHANGED FROM	DATE	CH. NO.	DRAFTS	CHECKER	ENG. APP.	
TOLERANCES			SCALE: FULL					
DEC. DIM. ±			MAXIMUM ALLOWABLE TOLERANCES HAVE BEEN DETERMINED AND ANY DEVIATIONS WILL BE CAUSE FOR REJECTION.					
FRAC. DIM. ± 1/64			REMOVE ALL BURRS AND SHARP EDGES					
ANGULAR DIM. ±								
LE		16 4/24/58	TYPE & TEMPER		HEAT TREAT. SPEC.	DRAWN	CHECKED	FINAL APPROVAL
NATURAL *			FINISH & SPEC. NO.			ELEC. DES. APP.	MECH. DES. APP.	PX-406 C

REQ. PER UNIT	USED ON			PX-407
	MODEL	ASS'Y. NO.	DATE	
1	SBE-2		5-13-58	



ISSUE	ITEM	CHANGED FROM	DATE	CH. NO.	DRAFTS	CHECKER	ENG. APP.	REQ. ITEM	PART NO.	DESCRIPTION	SYMBOL
								1/8 THICK		THE TECHNICAL MATERIEL CORP. MAMARONECK, NEW YORK	
								STOCK SIZE			
								PHENOLIC		SPACER	
								MATERIAL			
								XXP		<i>[Signature]</i>	<i>[Signature]</i>
								NATURAL		<i>[Signature]</i>	PX-407
								FINISH & SPEC. NO.		ELEC. DES. APP.	MECH. DES. APP.

TOLERANCES

DEC. DIM. \pm

FRAC. DIM. \pm 1/64

ANGULAR DIM. \pm

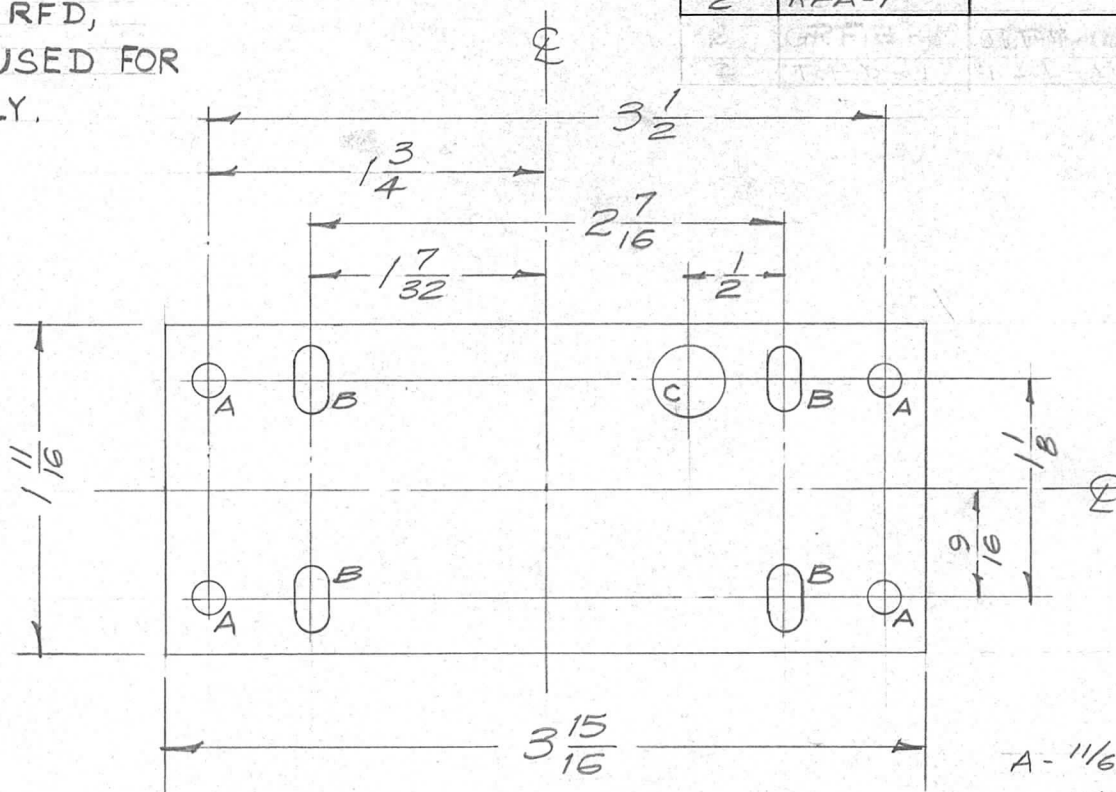
SCALE: $\frac{1}{1}$

MAXIMUM ALLOWABLE TOLERANCES HAVE BEEN DETERMINED AND ANY DEVIATIONS WILL BE CAUSE FOR REJECTION.

REMOVE ALL BURRS AND SHARP EDGES

NOTE:
 FOR RFB, RFC, & RFD,
 PX-408 TO BE USED FOR
 SPARE PARTS ONLY.

REQ. PER UNIT	USED ON			PX-408	A
	MODEL	ASS'Y. NO.	DATE		
2	RFA-1		5-6-58		



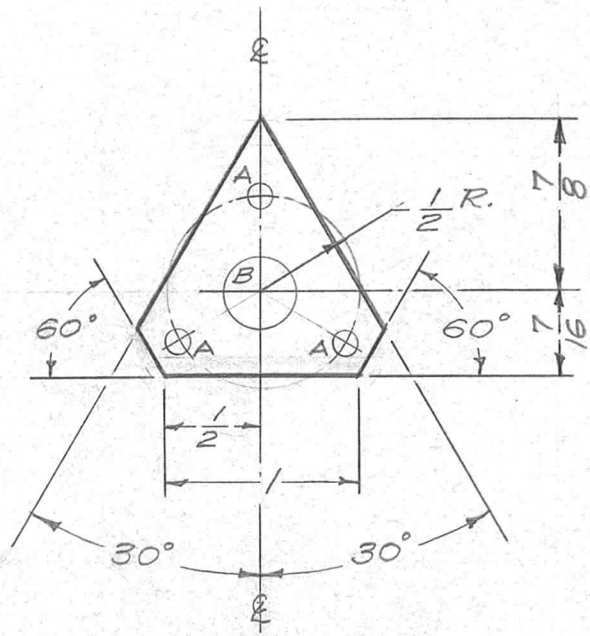
- A - 11/64 (.171) D. 4 Req.
- B - 11/64 x 11/32 Slot 4 Req.
- C - 3/8 (.375) D. 1 Req.

							REQ. ITEM	PART NO.	DESCRIPTION	SYMBOL		
							1/8 THK		THE TECHNICAL MATERIEL CORP. MAMARONECK. NEW YORK			
							STOCK SIZE					
							Linen Base		BASE, CAPACITOR MTG.			
							Phenolic					
							MATERIAL					
A	1	NOTE ADDED	2-7-61	4104	gaf	gob	RL					
ISSUE	ITEM	CHANGED FROM	DATE	CH. NO.	DRAFTS	CHECKER	ENG. APP.					
TOLERANCES			SCALE: FULL									
DEC. DIM. ±			MAXIMUM ALLOWABLE TOLERANCES HAVE BEEN DETERMINED AND ANY DEVIATIONS WILL BE CAUSE FOR REJECTION.									
FRAC. DIM. ± 1/64			REMOVE ALL BURRS AND SHARP EDGES									
ANGULAR DIM. ±												
LE								16 5/16 58	LWD	AM		
TYPE & TEMPER								HEAT TREAT. SPEC.	DRAWN	CHECKED	FINAL APPROVAL	
Natural										RFB	PX-408	A
FINISH & SPEC. NO.								ELEC. DES. APP.	MECH. DES. APP.			

REQ. PER UNIT	USED ON		
	MODEL	ASS'Y. NO.	DATE
3	RFA-1		5-24-58
1	RFB-1	GPT-10K	12-10-58
1	RFD-1	PAL-1K	6-22-59

PX-410

A - 9/64 (.140) D. 3 Holes Req. 120° Apart
 B - 3/8 (.375) D. 1 Req.



NOTICE TO PERSONS RECEIVING THIS DRAWING

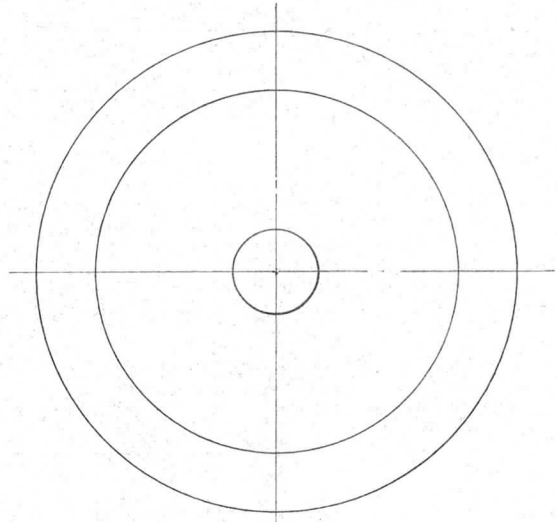
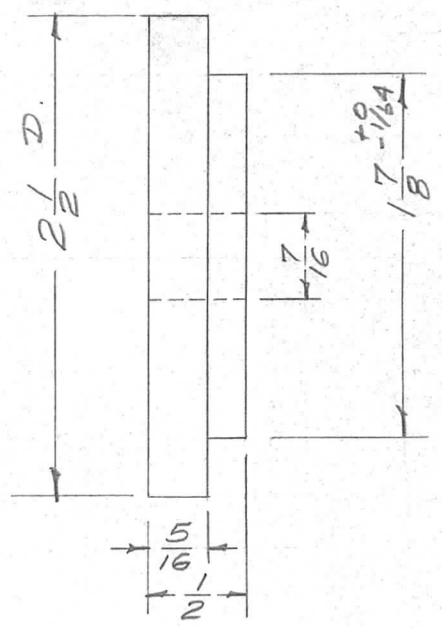
THE TECHNICAL MATERIEL CORPORATION claims proprietary right in the material disclosed hereon. This drawing is issued in confidence for engineering information only and may not be reproduced or used to manufacture anything shown hereon without permission from THE TECHNICAL MATERIEL CORPORATION to the user. This drawing is loaned for mutual assistance and is subject to recall at any time.

Property of:
 THE TECHNICAL MATERIEL CORPORATION
 MAMARONECK, NEW YORK

For PO-102

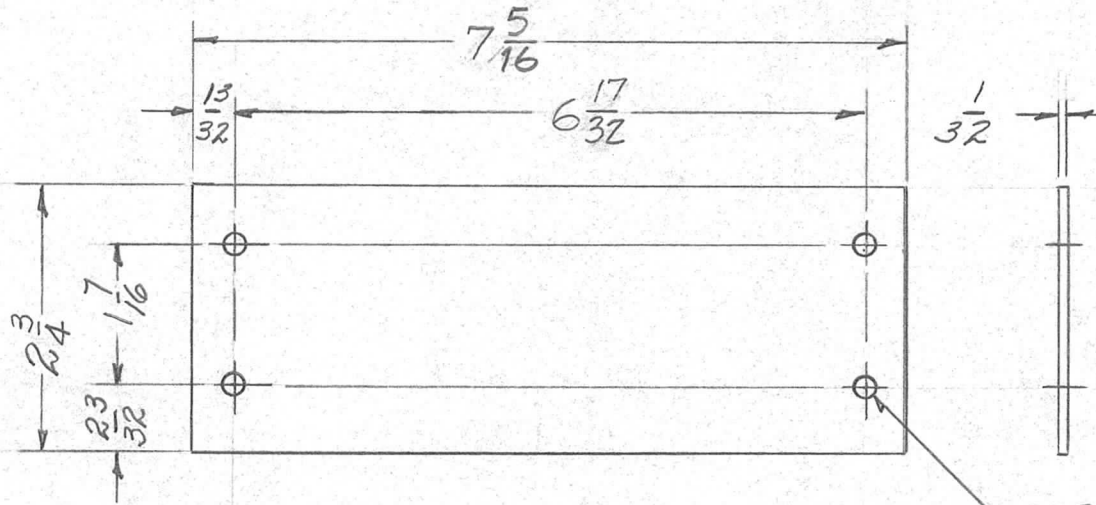
REQ.	ITEM	PART NO.	DESCRIPTION			SYMBOL	
		.032 THK.	THE TECHNICAL MATERIEL CORP.				
		STOCK SIZE	MAMARONECK, NEW YORK				
		SOLID WHITE VINYL PLASTIC	POINTER, KNOB,				
		MATERIAL	VERNIER DRIVE				
ISSUE	ITEM	CHANGED FROM	DATE	CH. NO.	DRAFTS	CHECKER	ENG. APP.
TOLERANCES			SCALE: FULL				
DEC. DIM. ±			MAXIMUM ALLOWABLE TOLERANCES HAVE BEEN DETERMINED AND ANY DEVIATIONS WILL BE CAUSE FOR REJECTION. REMOVE ALL BURRS AND SHARP EDGES				
FRAC. DIM. ± 1/64							
ANGULAR DIM. ±							
TYPE & TEMPER		HEAT TREAT. SPEC.	DRAWN	CHECKED	FINAL APPROVAL		
NONE				RFB	PX-410		
FINISH & SPEC. NO.		ELEC. DES. APP.	MECH. DES. APP.				

REQ. PER UNIT	USED ON			PX-412	A
	MODEL	ASS'Y. NO.	DATE		
1	VRA-1,2,2A	A-811	6-26-58		



REQ.	ITEM	PART NO.	DESCRIPTION				SYMBOL
		2-1/2 OD	THE TECHNICAL MATERIEL CORP.				
		STOCK SIZE	MAMARONECK. NEW YORK				
		Linen Base Phenolic	INSULATOR, MAST SUPPORT,				
			INSIDE				
		MATERIAL					
A	1	TO FINISH S113 ADDED	10.21.64	12663	WJB	JCB	MMK
ISSUE	ITEM	CHANGED FROM	DATE	CH. NO.	DRAFTS	CHECKER	ENG. APP.
TOLERANCES			SCALE: FULL				
DEC. DIM. ±			MAXIMUM ALLOWABLE TOLERANCES HAVE BEEN DETERMINED AND ANY DEVIATIONS WILL BE CAUSE FOR REJECTION.				
FRAC. DIM. ± 1/64			REMOVE ALL BURRS AND SHARP EDGES				
ANGULAR DIM. ±							
LE			16	6/26/58			
TYPE & TEMPER		HEAT TREAT. SPEC.	DRAWN	CHECKED	FINAL APPROVAL		
Natural, PROOFING		S113 FUNGUS			PX-412		
FINISH & SPEC. NO.		ELEC. DES. APP.	MECH. DES. APP.	A			

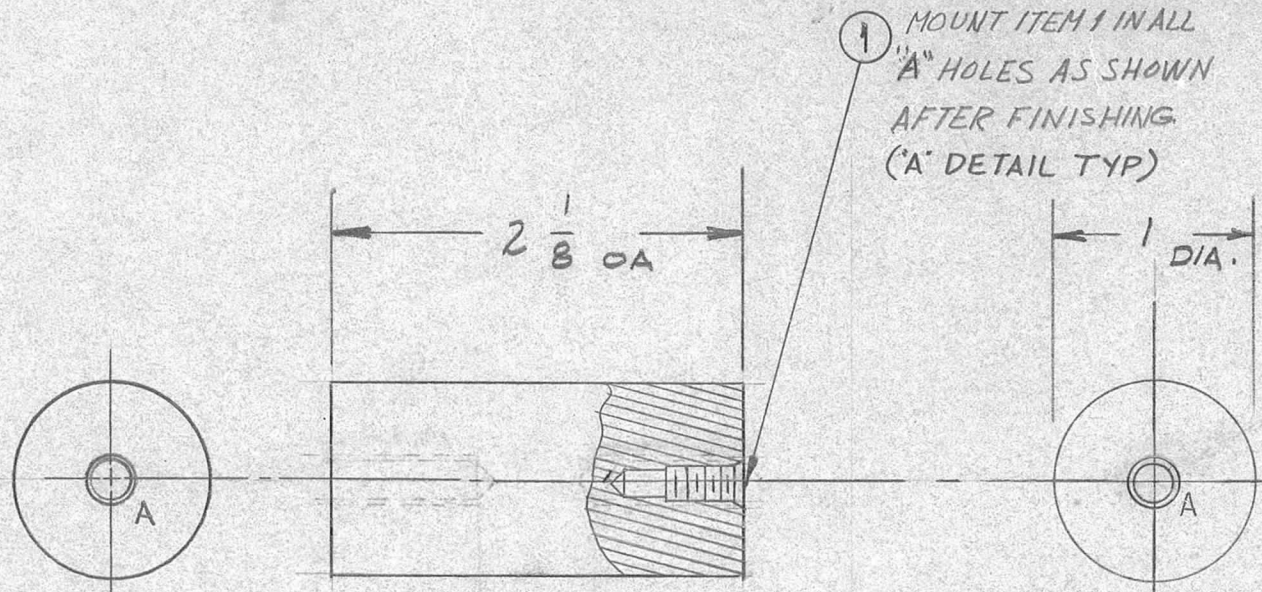
REQ. PER UNIT	USED ON			PX-413	B
	MODEL	ASS'Y. NO.	DATE		
2	GPR		7/25/58		



$\frac{3}{16}$ (.187) DIA. HOLES 4 REQ.

REQ.	ITEM	PART NO.	DESCRIPTION					SYMBOL		
B	2	6 17/32 WAS 7"	THE TECHNICAL MATERIEL CORP.					PX-413	B	
	1	75/16 WAS 7 13/16	MAMARONECK. NEW YORK							
A	1	7-13/16 WAS 7-5/16 7 WAS 6-17/32	CONDENSER, INSULATOR							
ISSUE ITEM			MATERIAL							
CHANGED FROM			GPR							
DATE			7/25/58							
CH. NO.			1							
DRAFTS			J.C.B.							
CHECKER			[Signature]							
ENG. APP.			[Signature]							
TOLERANCES			SCALE: 6"=1'0"							
DEC. DIM. ±			MAXIMUM ALLOWABLE TOLERANCES HAVE BEEN DETERMINED AND ANY DEVIATIONS WILL BE CAUSE FOR REJECTION.							
FRAC. DIM. ± 1/64			REMOVE ALL BURRS AND SHARP EDGES							
ANGULAR DIM. ±										
TYPE & TEMPER			HEAT TREAT. SPEC.		DRAWN		CHECKED		FINAL APPROVAL	
NATURAL					7/25/58		[Signature]		PX-413	
FINISH & SPEC. NO.			ELEC. DES. APP.		MECH. DES. APP.					

REQ. PER UNIT	USED ON			PX-435	C
	MODEL	ASS'Y. NO.	DATE		
3	GPT-1904	RF Deck	1-2-59		



① MOUNT ITEM 1 IN ALL "A" HOLES AS SHOWN AFTER FINISHING ('A' DETAIL TYP)

HOLE LEGEND

- A - HOLES TO BE MACHINED AS FOLLOWS: 2-REQ.
- 1- #5(.203) DRILL TO .625 DP
 - 2- 120° C'SINK .24-.27 DIA.
 - 3- TAP .120 MIN DEPTH, USE HELI COIL TAP #3 CPB
 - 4- MOUNT ITEM (1) 3/4 TO 1-1/2 PITCH BELOW SURFACE.
 - 5- BREAK OFF DRIVING TANG.

NOTICE TO PERSONS RECEIVING THIS DRAWING

THE TECHNICAL MATERIEL CORPORATION claims proprietary right in the material disclosed hereon. This drawing is issued in confidence for engineering information only and may not be reproduced or used to manufacture anything shown hereon without permission from THE TECHNICAL MATERIEL CORPORATION to the user. This drawing is loaned for mutual assistance and is subject to recall at any time.

Property of:
THE TECHNICAL MATERIEL CORPORATION
MAMARONECK, NEW YORK

		2	1	NT-139-SCI-20	INSERT, SCREW THREAD		
		REQ.	ITEM	PART NO.	DESCRIPTION	SYMBOL	
C		EPOXY WAS MELAMINE 1-15-68 18717 HQ. FB			1" THICK		
B	2	ITEM (1) ADDED 8-13-62 7015 GS. FB			STOCK SIZE		
A	1	'A' HOLE WAS DR & TAP 10-24 2/14/59			EPOXY		
		ADDED TYPE 5 TEMP			MATERIAL		
ISSUE	ITEM	CHANGED FROM	DATE	CH. NO.	DRAFTS	CHECKER	ENG. APP.
TOLERANCES			SCALE:				
DEC. DIM. ±			MAXIMUM ALLOWABLE TOLERANCES HAVE BEEN DETERMINED AND ANY DEVIATIONS WILL BE CAUSE FOR REJECTION. REMOVE ALL BURRS AND SHARP EDGES				
FRAC. DIM. ±							
ANGULAR DIM. ±							
		G-10			TORILLO	HQ	AKB
		TYPE & TEMPER	HEAT TREAT. SPEC.		DRAWN	CHECKED	FINAL APPROVAL
				203			PX-435
		FINISH & SPEC. NO.		ELEC. DES. APP	MECH. DES. APP		C

HOLE LEGEND

- A - HOLES TO BE MACHINED AS FOLLOWS: 3 REQ.
 1- 13/64 DRILL (.203) TO .562 DP
 2- 120° C'SINK .22-.25 DIA.
 3- TAP .410 MIN. DEPTH, USE HELI COIL TAP #3 FPB
 4- MOUNT ITEM (1) 3/4 TO 1-1/2 PITCH BELOW SURFACE
 5- BREAK OFF DRIVING TANG

B - 3/4 DIA

2 REQ.

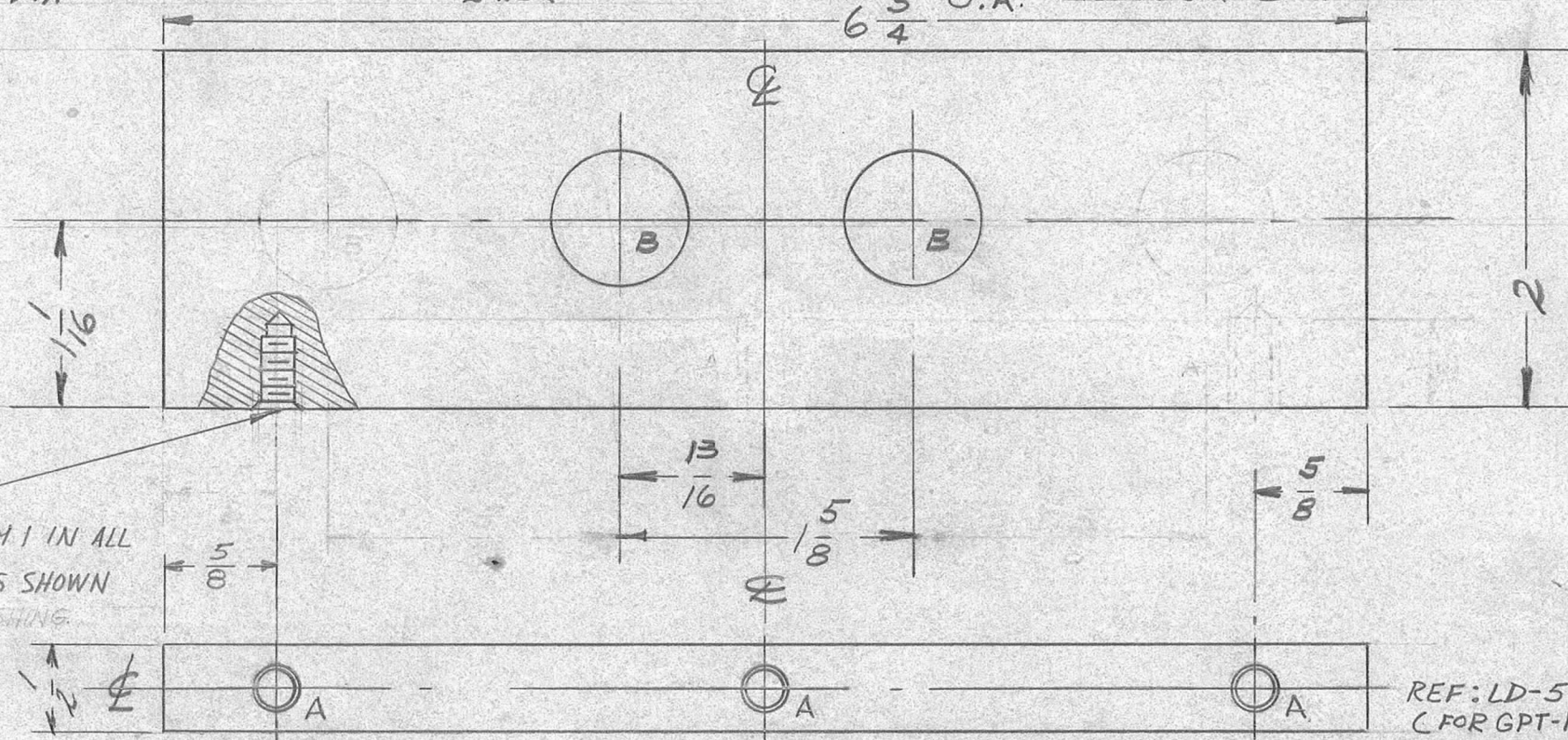
6 ³/₄ O.A.

APPLY S-113 BEFORE HARDWARE IS MOUNTED.

* FUNGUS PROOFING PER TMC SPECIFICATION S-113

PX-445 C

REQ. PER UNIT	USED ON		
	MODEL	ASS'Y. NO.	DATE
1	GPT-10K	AR-109	1-29-59
1	GPT-40K	AP-103	



① MOUNT ITEM 1 IN ALL 'A' HOLES AS SHOWN AFTER FINISHING.

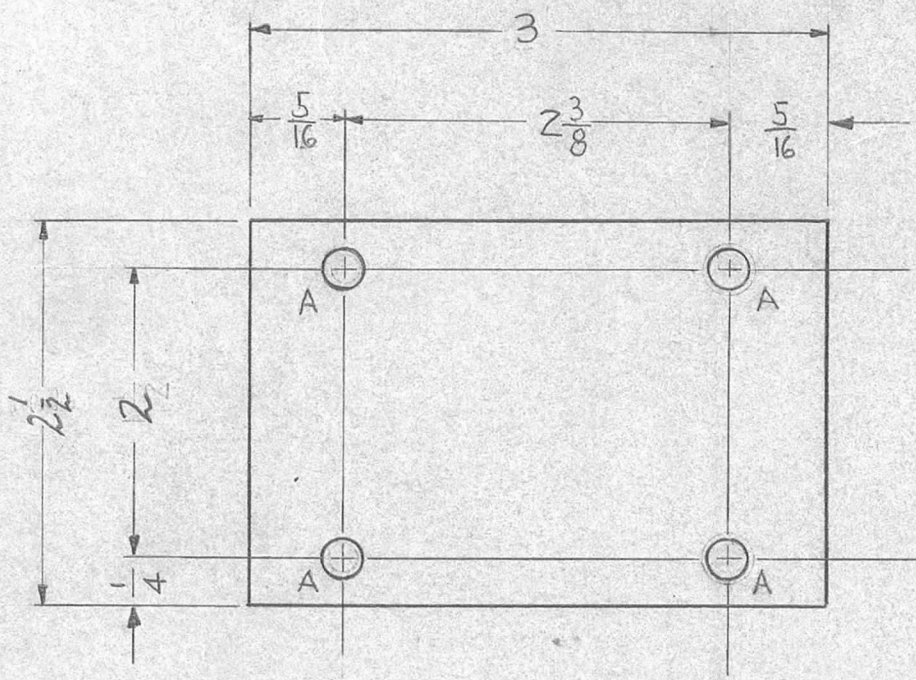
REF: LD-584 (FOR GPT-10K ONLY)

ISSUE	ITEM	CHANGED FROM	DATE	CH. NO.	DRAFTS	CHECKER	ENG. APP.	REQ.	ITEM	PART NO.	DESCRIPTION	SYMBOL	
C	1	S-113 NOTE ADDED	4.13.64	11186	WJB	JLQ	DB	3	1	NT-139-SFI-20	INSERT, SCREW THREAD		
B	2	'A' HOLES WERE DRILL TAP 10-32	8-10-62	7008	GS	JLQ	DB				1/2 THICK	THE TECHNICAL MATERIEL CORP. MAMARONECK, NEW YORK CONTACT BUTTON TERMINAL BOARD	
	1	ITEM 1 ADDED									STOCK SIZE		
A	1	TWO 'B' HOLES DELETED	11-1-59	1505	MM	W	AWC				PHENOLIC		
TOLERANCES			SCALE: FULL					XXX P		TORILLO		NAN	
DEC. DIM. ±			MAXIMUM ALLOWABLE TOLERANCES HAVE BEEN DETERMINED AND ANY DEVIATIONS WILL BE CAUSE FOR REJECTION. REMOVE ALL BURRS AND SHARP EDGES					NATURAL*		DRAWN		CHECKED	
FRAC. DIM. ±								FINISH & SPEC. NO.		ELEC. DES. APP.		MECH. DES. APP.	
ANGULAR DIM. ±													

REQ. PER UNIT	USED ON			PX-453	F
	MODEL	ASS'Y. NO.	DATE		
2	GPT-10K TI-102	RF DECK AT-100	1-31-59		

A - $\frac{13}{64}$ (.203) DIA. 4 REQ.

B - $\frac{1}{4}$ (.25) DIA.



NOTICE TO PERSONS RECEIVING THIS DRAWING

THE TECHNICAL MATERIEL CORPORATION claims proprietary right in the material disclosed hereon. This drawing is issued in confidence for engineering information only and may not be reproduced or used to manufacture anything shown hereon without permission from THE TECHNICAL MATERIEL CORPORATION to the user. This drawing is loaned for mutual assistance and is subject to recall at any time.

Property of:
THE TECHNICAL MATERIEL CORPORATION
MAMARONECK, NEW YORK

F	1	MAT. WAS G 10	3-15-6	1899	CY	JH	ARB
E	1	MATERIAL WAS MELAMINE	2-18-60	1859	W.F.	JH	ARB
D	1	"A" HOLES (13/64) WERE 9/64 A HOLES RELOCATED	1/11/60	1740	W.F.	JH	ARB
C	1	TWO "B" HOLES WERE MOVED 9/64 D	9-21-59	1344	PLD	JH	ARB
B		ADDED TYPES TECH PER	8/14/57		W	JH	ARB
A	1	NO. REQ PER UNIT WAS 1	3-27-59		J.C.B.	JH	ARB

Ref - 1 LD-576

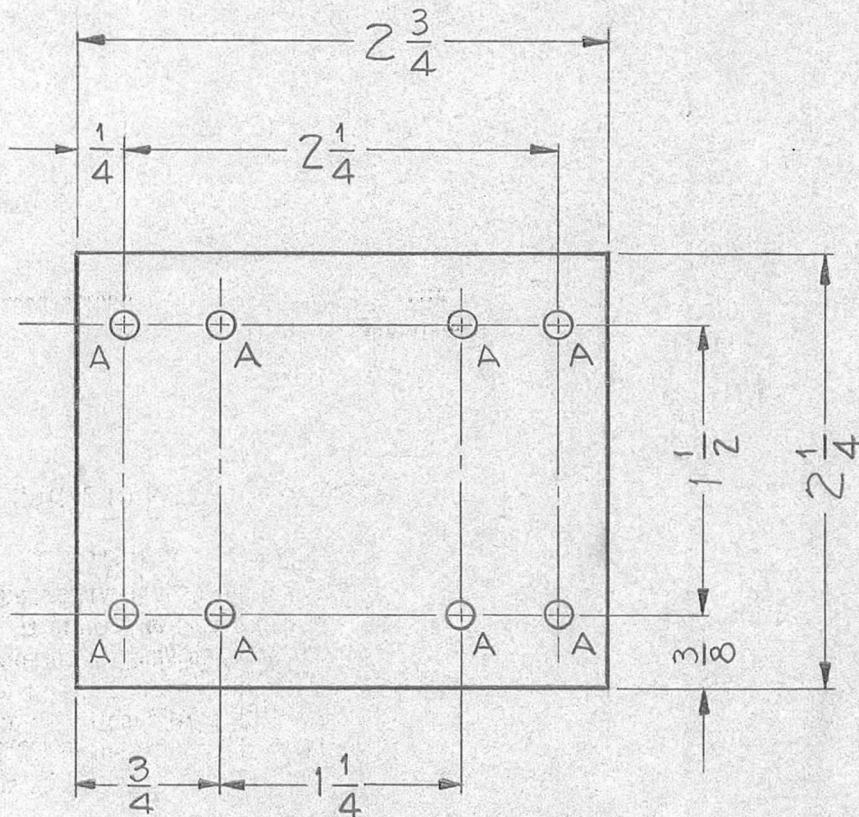
REQ.	ITEM	PART NO.	DESCRIPTION	SYMBOL
		3/8	THE TECHNICAL MATERIEL CORP. MAMARONECK, NEW YORK	
		EPOXY	CONDENSER, MOUNT	
			ANT. TUNER	
		G-11	J.C. BIELE	ARB
			DRAWN	CHECKED
				FINAL APPROVAL
				PX-453 F

ISSUE		ITEM	CHANGED FROM	DATE	CH. NO.	DRAFTS	CHECKER	ENG. APP.
TOLERANCES			SCALE:					
DEC. DIM. ±			MAXIMUM ALLOWABLE TOLERANCES HAVE BEEN DETERMINED AND ANY DEVIATIONS WILL BE CAUSE FOR REJECTION.					
FRAC. DIM. ± 1/64			REMOVE ALL BURRS AND SHARP EDGES					
ANGULAR DIM. ±								

REQ. PER UNIT	USED ON			PX-456	A
	MODEL	ASS'Y. NO.	DATE		
1	GPT10K	RELAY Panel	2-14-59		

A - 9/64 (.140) DIA.

8 Req.



NOTICE TO PERSONS RECEIVING THIS DRAWING

THE TECHNICAL MATERIEL CORPORATION claims proprietary right in the material disclosed hereon. This drawing is issued in confidence for engineering information only and may not be reproduced or used to manufacture anything shown hereon without permission from THE TECHNICAL MATERIEL CORPORATION to the user. This drawing is loaned for mutual assistance and is subject to recall at any time.

Property of:
THE TECHNICAL MATERIEL CORPORATION
MAMARONECK, NEW YORK

* FUNGUS PROOFING PER
TMC SPECIFICATION S-113

REQ.	ITEM	PART NO.	DESCRIPTION			SYMBOL
		1/16	THE TECHNICAL MATERIEL CORP.			
		STOCK SIZE	MAMARONECK, NEW YORK			
A	S113 ADDED	4-13-64 11186	BOARD, RELAY MOUNTING			
		PHENOLIC	(RELAY MOUNTING PANEL)			
		MATERIAL				
		XXXXP	J.C. BIELE			
TOLERANCES		SCALE:	DRAWN	CHECKED	FINAL APPROVAL	
DEC. DIM. ±		MAXIMUM ALLOWABLE TOLERANCES HAVE BEEN DETERMINED AND ANY DEVIATIONS WILL BE CAUSE FOR REJECTION. REMOVE ALL BURRS AND SHARP EDGES	NATURAL *			
FRAC. DIM. ± 1/64						
ANGULAR DIM. ±						
		FINISH & SPEC. NO.	ELEC. DES. APP	MECH. DES. APP	PX-456 A	

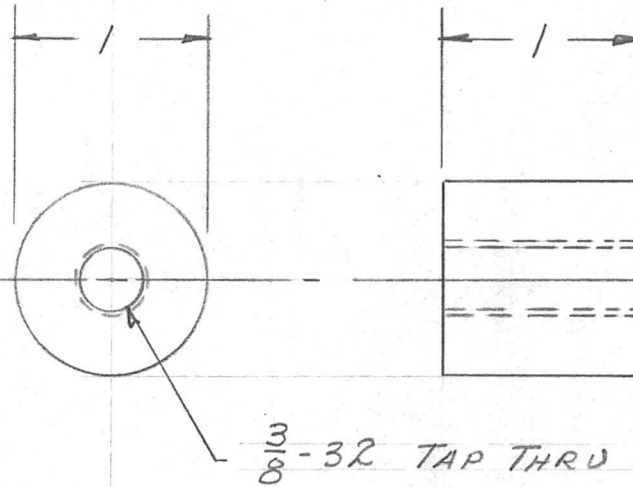
REQ. PER. UNIT	USED ON			PX-462
	MODEL	ASS'Y. NO.	DATE	
1	GPT-10KW		3-2-59	

NOTICE TO PERSONS RECEIVING THIS DRAWING

THE TECHNICAL MATERIEL CORPORATION claims proprietary right in the material disclosed hereon. This drawing is issued in confidence for engineering information only and may not be reproduced or used to manufacture anything shown hereon without permission from THE TECHNICAL MATERIEL CORPORATION to the user. This drawing is loaned for mutual assistance and is subject to recall at any time.

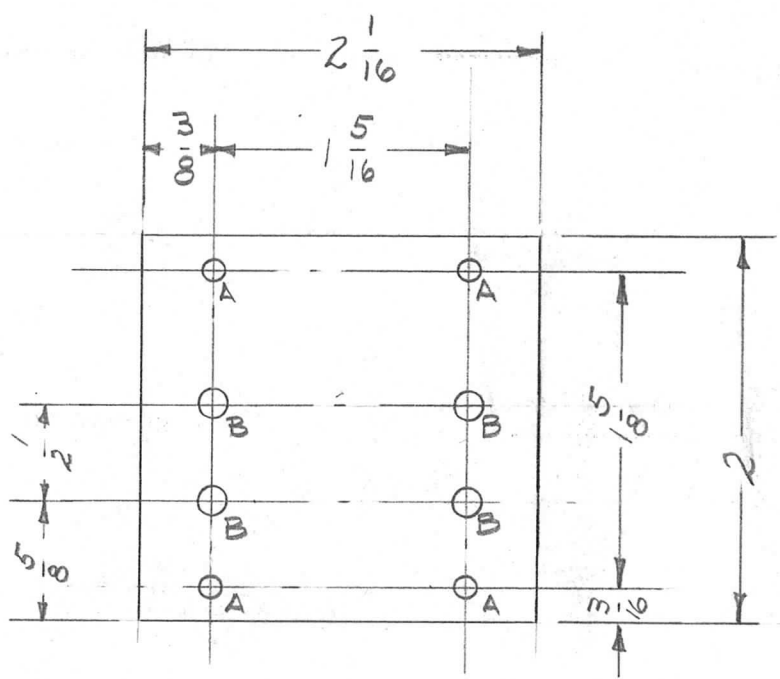
Property of:

THE TECHNICAL MATERIEL CORPORATION
MAMARONECK, NEW YORK



REQ.	ITEM	PART NO.	DESCRIPTION		SYMBOL												
		1" ROUND	THE TECHNICAL MATERIEL CORP.														
		STOCK SIZE	MAMARONECK, NEW YORK														
		PHENOLIC	INSULATOR, SPACER														
		MATERIAL	SCREEN OVL D ADJ. RELAY PANEL														
ISSUE	ITEM	CHANGED FROM	DATE	CH. NO.	DRAFTS	CHECKER	ENG. APP.										
TOLERANCES			SCALE: FULL SIZE														
DEC. DIM. ±			MAXIMUM ALLOWABLE TOLERANCES HAVE BEEN DETERMINED AND ANY DEVIATIONS WILL BE CAUSE FOR REJECTION. REMOVE ALL BURRS AND SHARP EDGES			TYPE & TEMPER		HEATTREAT. SPEC.		DRAWN		CHECKED		FINAL APPROVAL			
FRAC. DIM. ± 1/64						NATURAL											
ANGULAR DIM. ±						FINISH & SPEC. NO.											
						ELEC. DES. APP		MECH. DES. APP		PX-462							

REQ. PER. UNIT	USED ON			PX-463	A
	MODEL	ASS'Y. NO.	DATE		
2	GPT-10K		3/6/59		



A- #33 DR (.113) 4 REQ'D,
 B- 9/64 DIA. 4 "

NOTICE TO PERSONS RECEIVING THIS DRAWING

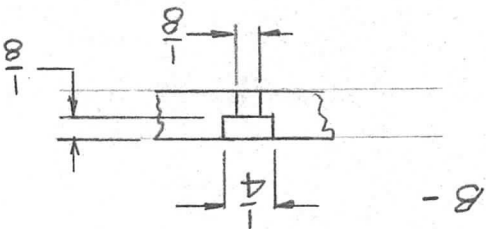
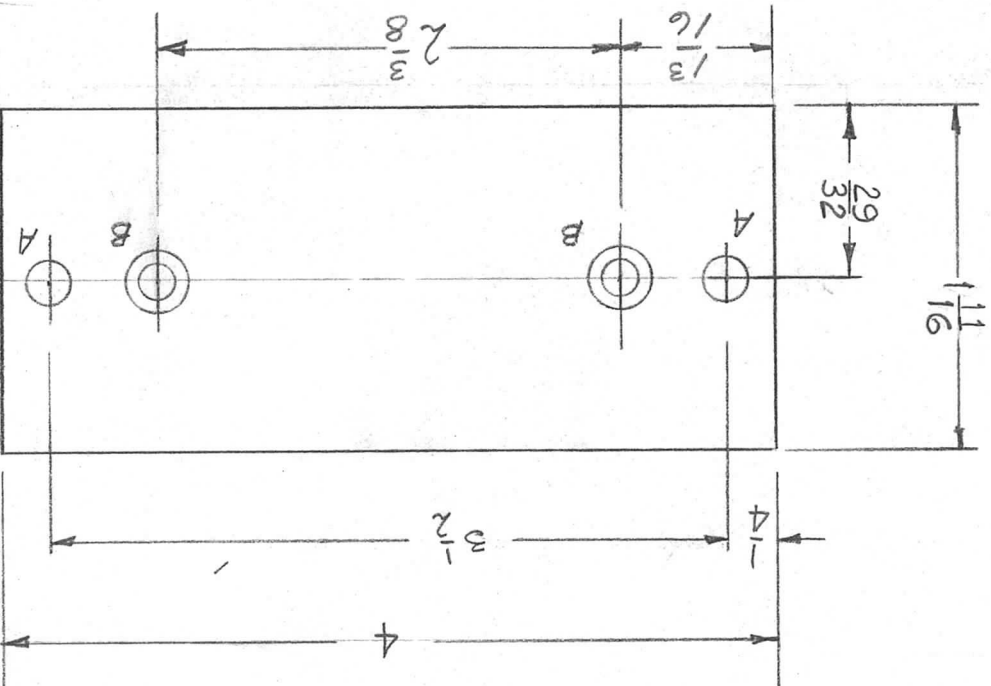
THE TECHNICAL MATERIEL CORPORATION claims proprietary right in the material disclosed hereon. This drawing is issued in confidence for engineering information only and may not be reproduced or used to manufacture anything shown hereon without permission from THE TECHNICAL MATERIEL CORPORATION to the user. This drawing is loaned for mutual assistance and is subject to recall at any time.

Property of:
 THE TECHNICAL MATERIEL CORPORATION
 MAMARONECK, NEW YORK

* FUNGUS PROOFING PER
 TMC SPECIFICATION S-113

REQ.	ITEM	PART NO.	DESCRIPTION				SYMBOL
		1/8 THICK	THE TECHNICAL MATERIEL CORP.				
		STOCK SIZE	MAMARONECK, NEW YORK				
		PHENOLIC	PLATE, RELAY MOUNTING				
		MATERIAL	PA SCREEN ON-OFF & TUNE OPERATOR				
A	S113 ADDED	4-13-64 11186 A.M. <i>file</i>	<i>file</i>	<i>file</i>	<i>file</i>	<i>ARB</i>	
ISSUE	ITEM	CHANGED FROM	DATE	CH. NO.	DRAFTS	CHECKER	ENG. APP.
TOLERANCES			SCALE:				
DEC. DIM. ±			MAXIMUM ALLOWABLE TOLERANCES HAVE BEEN DETERMINED AND ANY DEVIATIONS WILL BE CAUSE FOR REJECTION.				
FRAC. DIM. ±			REMOVE ALL BURRS AND SHARP EDGES				
ANGULAR DIM. ±							
TYPE & TEMPER		HEAT TREAT. SPEC.	DRAWN	CHECKED	FINAL APPROVAL		
XXXXP			<i>file</i>	<i>file</i>	<i>ARB</i>		
NATURAL *					PX-463 A		
FINISH & SPEC. NO.		ELEC. DES. APP	MECH. DES. APP				

DEC. DIM. ±	TOLERANCES		MAXIMUM ALLOWABLE TOLERANCES HAVE BEEN DETERMINED AND ANY DEVIATIONS WILL BE CAUSE FOR REJECTION.				FINISH & SPEC. NO.		ELEC. DES. APP.	PX-4GS	A
	ANGULAR DIM. ±	FRAC. DIM. ±	SCALE:	REMOVE ALL BURRS AND SHARP EDGES			NATURAL		MECH. DES. APP.		
ISSUE	ITEM	CHANGED FROM	DATE	CH. NO.	DRAFTS	CHECKER	ENG. APP.	DRAWN	CHECKED	FINAL APPROVAL	
								HEATREAT. SPEC.			TYPE & TEMPER
A	2	29/32 DIM. ADDED	2-15-61	4180	M.A.F.	RK	OUT				
	1	O/A DIM. 1 11/16 WAS 1 13/16									
DESCRIPTION			PART NO.		REQ. ITEM	STOCK SIZE	MATERIAL	THE TECHNICAL MATERIEL CORP.			
SYMBOL						1/4 THICK	TEFLON	MAMARONECK, NEW YORK			



THE TECHNICAL MATERIEL CORPORATION
MAMARONECK, NEW YORK

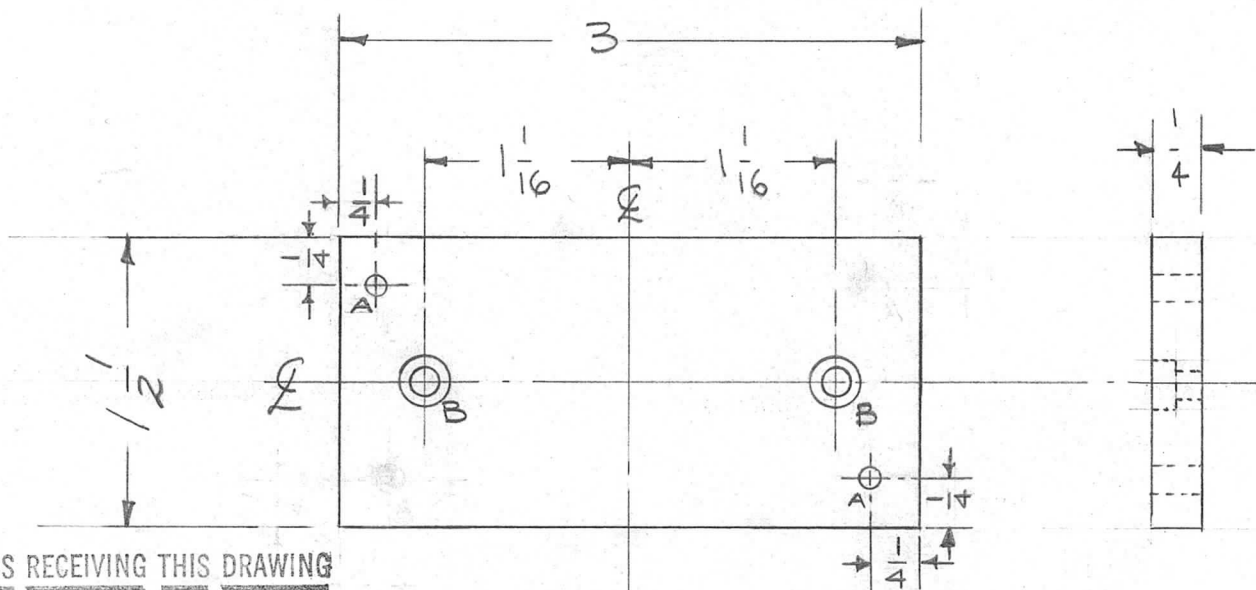
Property of:
This drawing is issued in confidence for engineering information only and may not be reproduced or used to manufacture anything shown hereon without permission from THE TECHNICAL MATERIEL CORPORATION to the user. This drawing is loaned for mutual assistance and is subject to recall at any time.

THE TECHNICAL MATERIEL CORPORATION claims
proprietary right in the material disclosed hereon.
NOTICE TO PERSONS RECEIVING THIS DRAWING

A - 1 1/64 (.171) DIM HOLE 2 REQ

1	QPT-10KM	3-17-59	3-17-59	PX-4GS	A
PER. UNIT	MODEL	ASSY. NO.	DATE		
USED ON					

REQ. PER. UNIT	USED ON			PX-469 B
	MODEL	ASS'Y. NO.	DATE	
1	GPT-10K		4-3-59	



NOTICE TO PERSONS RECEIVING THIS DRAWING

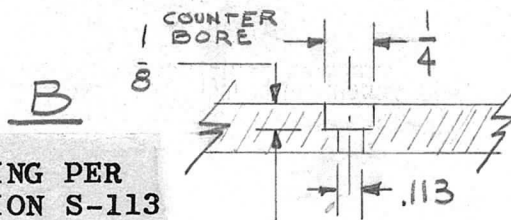
THE TECHNICAL MATERIEL CORPORATION claims proprietary right in the material disclosed hereon. This drawing is issued in confidence for engineering information only and may not be reproduced or used to manufacture anything shown hereon without permission from THE TECHNICAL MATERIEL CORPORATION to the user. This drawing is loaned for mutual assistance and is subject to recall at any time.

Property of:

THE TECHNICAL MATERIEL CORPORATION
MAMARONECK, NEW YORK

* FUNGUS PROOFING PER
TMC SPECIFICATION S-113

A - 9/64 DIA $\frac{9}{64}$ 2 REQ.

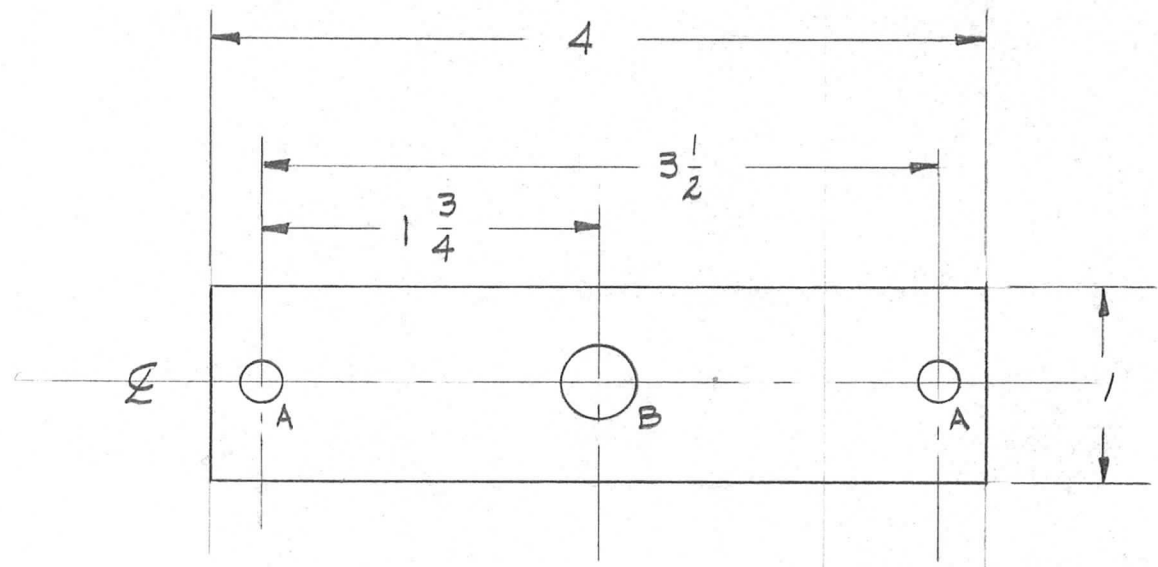


2 REQ.

MAMARONECK, NEW YORK							REQ. ITEM	PART NO.	DESCRIPTION	SYMBOL			
B		S113 ADDED	4/13/64	11186 AM.	JHE	203	1/4	THE TECHNICAL MATERIEL CORP. MAMARONECK, NEW YORK					
A	2	TWO "A" HOLES RELOCATED	8-16-61	5436 E.E.	RLU	203	PHENOLIC	CONDENSER MOUNT					
	1	"A" HOLE DIM. WAS 1/8					MATERIAL						
ISSUE ITEM CHANGED FROM			DATE	CH. NO.	DRAFTS	CHECKER	ENG. APP.						
TOLERANCES			SCALE:				XXX		JORILLO	JHE			
DEC. DIM. ±			MAXIMUM ALLOWABLE TOLERANCES HAVE BEEN DETERMINED AND ANY DEVIATIONS WILL BE CAUSE FOR REJECTION. REMOVE ALL BURRS AND SHARP EDGES				TYPE & TEMPER	HEATTREAT. SPEC.	DRAWN	CHECKED	FINAL APPROVAL		
FRAC. DIM. ±							NATURAL *						
ANGULAR DIM. ±													
							FINISH & SPEC. NO.	ELEC. DES. APP	MECH. DES. APP	PX-469 B			

REQ. PER. UNIT	USED ON		
	MODEL	ASS'Y. NO.	DATE
1	GPT-10K	RFB-1	4/21/59
1	RFD-1/PALIK		6/25/59

PX-471 A



HOLES	REQ'D.
A - $\frac{13}{64}$ (.203)	2
B - $\frac{3}{8}$ (.375)	1

NOTICE TO PERSONS RECEIVING THIS DRAWING

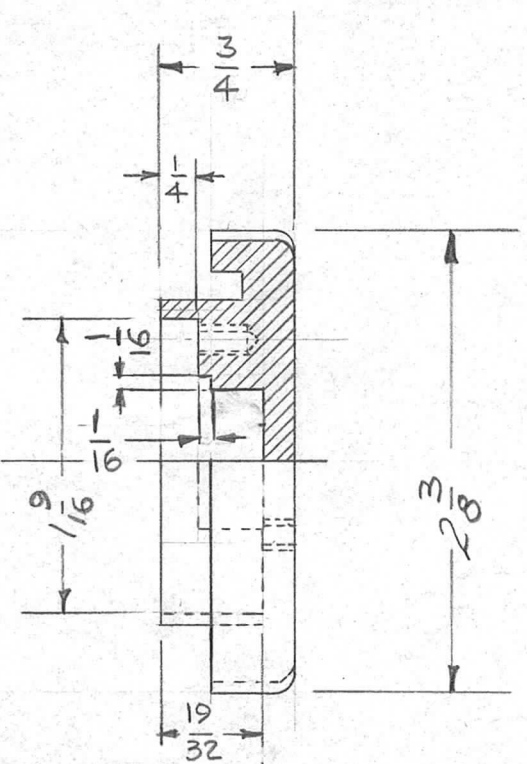
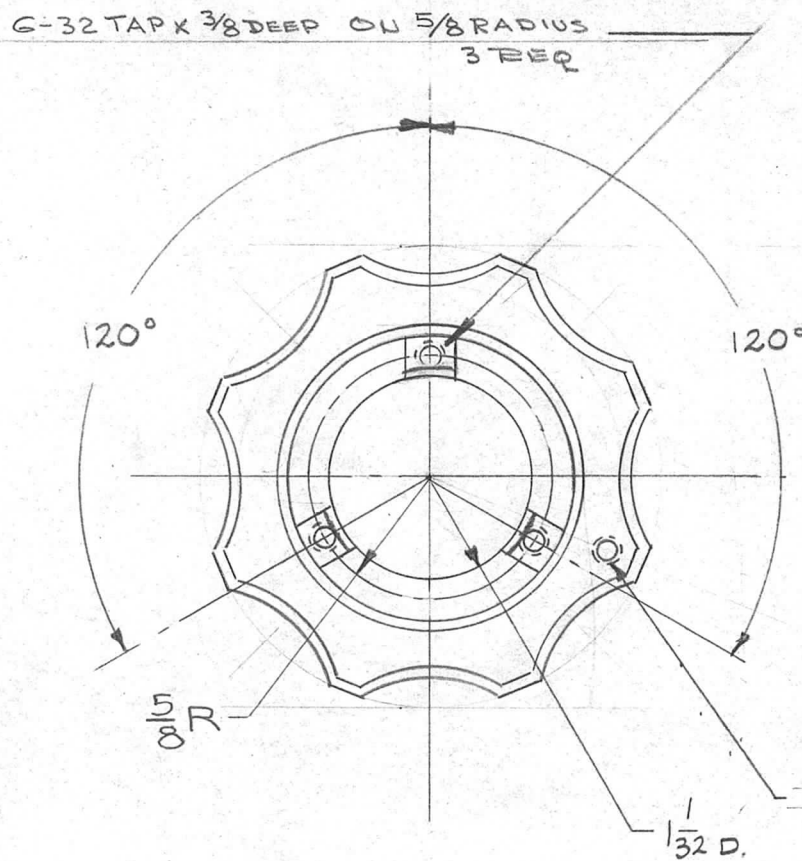
THE TECHNICAL MATERIEL CORPORATION claims proprietary right in the material disclosed hereon. This drawing is issued in confidence for engineering information only and may not be reproduced or used to manufacture anything shown hereon without permission from THE TECHNICAL MATERIEL CORPORATION to the user. This drawing is loaned for mutual assistance and is subject to recall at any time.

*** FUNGUS PROOFING PER TMC SPECIFICATION S-113**

								REQ.	ITEM	PART NO.	DESCRIPTION	SYMBOL				
											THE TECHNICAL MATERIEL CORP. MAMARONECK, NEW YORK NEUTRALIZER MTG. BOARD					
										$\frac{1}{8}$						
										STOCK SIZE						
										PHENOLIC						
										MATERIAL						
A		SI13 ADDED	4/13/64	11186	AM.	JAD	QR	XXXXP								
ISSUE	ITEM	CHANGED FROM	DATE	CH. NO.	DRAFTS	CHECKER	ENG. APP.	LAMINATE								
TOLERANCES			SCALE:													
DEC. DIM. ±			MAXIMUM ALLOWABLE TOLERANCES HAVE BEEN DETERMINED AND ANY DEVIATIONS WILL BE CAUSE FOR REJECTION. REMOVE ALL BURRS AND SHARP EDGES					TYPE & TEMPER	HEAT TREAT. SPEC.	DRAWN	CHECKED	FINAL APPROVAL				
FRAC. DIM. ±								*								
ANGULAR DIM. ±																
								FINISH & SPEC. NO.		ELEG. DES. APP	MECH. DES. APP	PX-471 A				

REQ. PER. UNIT	USED ON		
	MODEL	ASS'Y. NO.	DATE
2	GPTDK-RFB	A-1625	4/6/59
4	GPT-10K	A-1625	4/6/59
2	GPT-750(RF)	A-1625	4/6/59

PX-470 C



NOTICE TO PERSONS RECEIVING THIS DRAWING

THE TECHNICAL MATERIEL CORPORATION claims proprietary right in the material disclosed hereon. This drawing is issued in confidence for engineering information only and may not be reproduced or used to manufacture anything shown hereon without permission from THE TECHNICAL MATERIEL CORPORATION to the user. This drawing is loaned for mutual assistance and is subject to recall at any time.

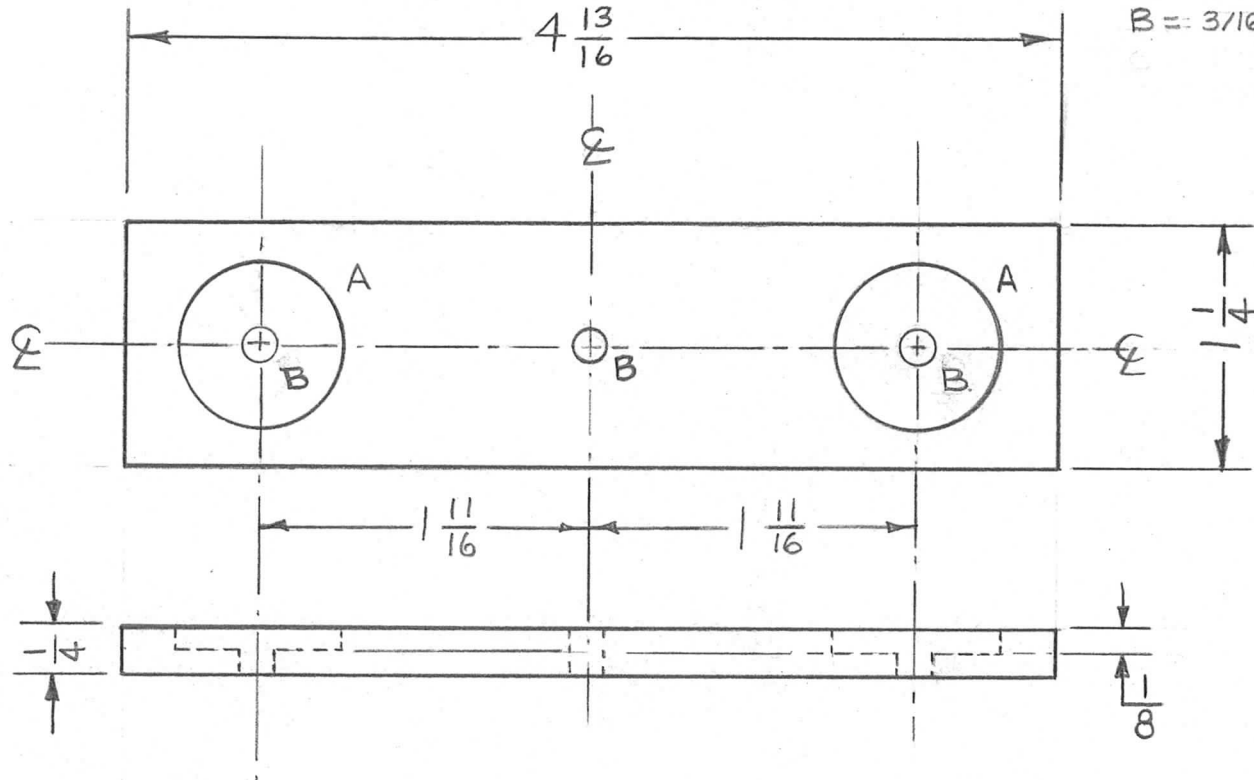
Property of:
THE TECHNICAL MATERIEL CORPORATION
MAMARONECK, NEW YORK

REF: MP-110 (MODIFIED AS SHOWN)

ISSUE	ITEM	CHANGED FROM	DATE	CH. NO.	DRAFTS	CHECKER	ENG. APP.	REQ.	ITEM	PART NO.	DESCRIPTION	SYMBOL		
C	1	1/16 X 1/16 STEP FOR MTG. SHOULDERS ADDED	3-3-66	15848	GDL	CPB	MM				THE TECHNICAL MATERIEL CORP. MAMARONECK, NEW YORK KNOB, MODIFICATION			
B	2	3/4 DIM WAS 11/16	4.15.64	11236	WB	file	SB			STOCK SIZE				
	1	19/32 DIM WAS 17/32												
A	1	PX-470 WAS MP-113	4/20/59	1	J.C.B.	file	ATO			MATERIAL				
TOLERANCES								SCALE:						
DEC. DIM. ± FRAC. DIM. ± ANGULAR DIM. ±								MAXIMUM ALLOWABLE TOLERANCES HAVE BEEN DETERMINED AND ANY DEVIATIONS WILL BE CAUSE FOR REJECTION. REMOVE ALL BURRS AND SHARP EDGES						
								TYPE & TEMPER	HEATTREAT.SPEC.	DRAWN	CHECKED	FINAL APPROVAL		
								FINISH & SPEC. NO.		ELEC. DES. APP	MECH. DES. APP	PX-470 C		

REQ. PER. UNIT	USED ON			PX-477	A
	MODEL	ASS'Y. NO.	DATE		
1	P.S.5 (PAL-1K)		6-16-59		

A = 7/8 (.875) D. X 1/8 DEEP
 B = 3/16 (.187) D. 3 REQ



* FUNGUS PROOFING PER
 TMC SPECIFICATION S-113

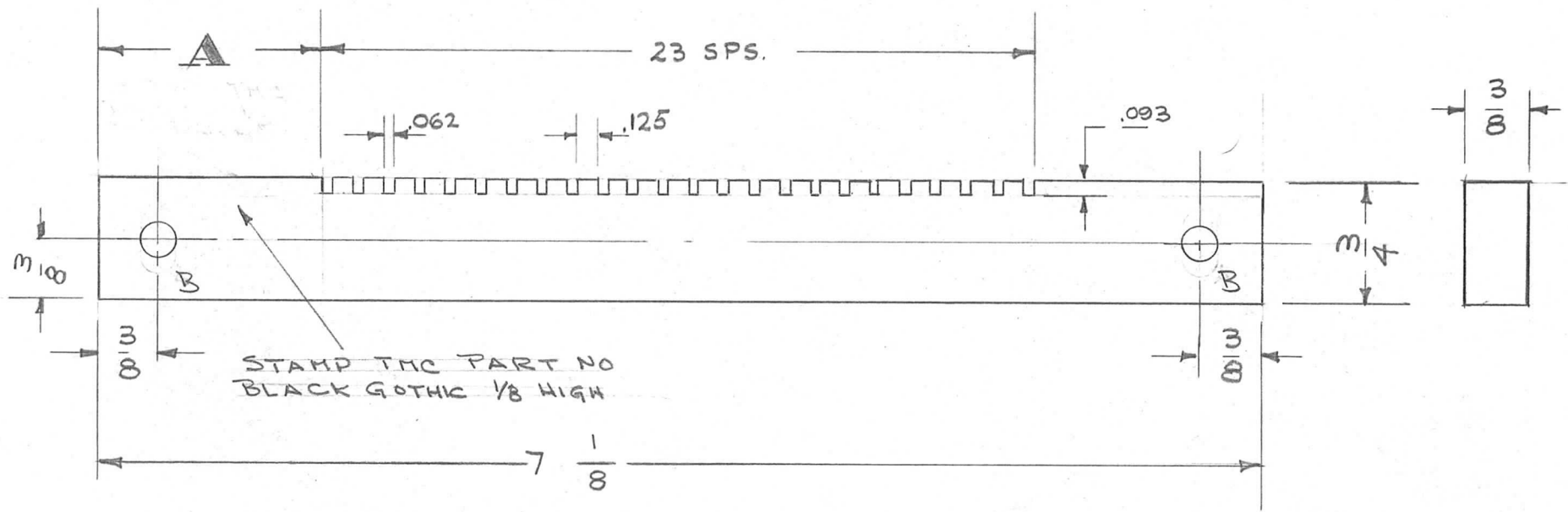
REQ.	ITEM	PART NO.	DESCRIPTION		SYMBOL		
		1/4" THICK	THE TECHNICAL MATERIEL CORP.				
		STOCK SIZE	MAMARONECK, NEW YORK				
		XXXP PHENOLIC	BOARD, TUBE CLAMP				
		MATERIAL					
A	S113 ADDED	4/13/64	11186	A.M. <i>[Signature]</i>	<i>[Signature]</i>		
ISSUE	ITEM	CHANGED FROM	DATE	CH. NO.	DRAFTS	CHECKER	ENG. APP.
TOLERANCES			SCALE: FULL (Do Not Scale)				
DEC. DIM. ±			MAXIMUM ALLOWABLE TOLERANCES HAVE				
FRAC. DIM. ± 1/64			BEEN DETERMINED AND ANY DEVIATIONS				
ANGULAR DIM. ±			WILL BE CAUSE FOR REJECTION.				
			REMOVE ALL BURRS AND SHARP EDGES				
TYPE & TEMPER		HEAT TREAT. SPEC.	DRAWN	CHECKED	FINAL APPROVAL		
NATURAL		*	<i>[Signature]</i>	<i>[Signature]</i>	<i>[Signature]</i>		
FINISH & SPEC. NO.		ELEC. DES. APP	MECH. DES. APP		PX-477	A	

TMC NO	REQ'D.
PX-478-1	1
PX-478-2	1
PX-478-3	1

REQ. PER UNIT	USED ON		
	MODEL	ASS'Y. NO.	DATE
1 EACH	ATS-50(70)TU2		6-10-59

PX-478 B

B - 13/64 DIAM. 2 REQ'D

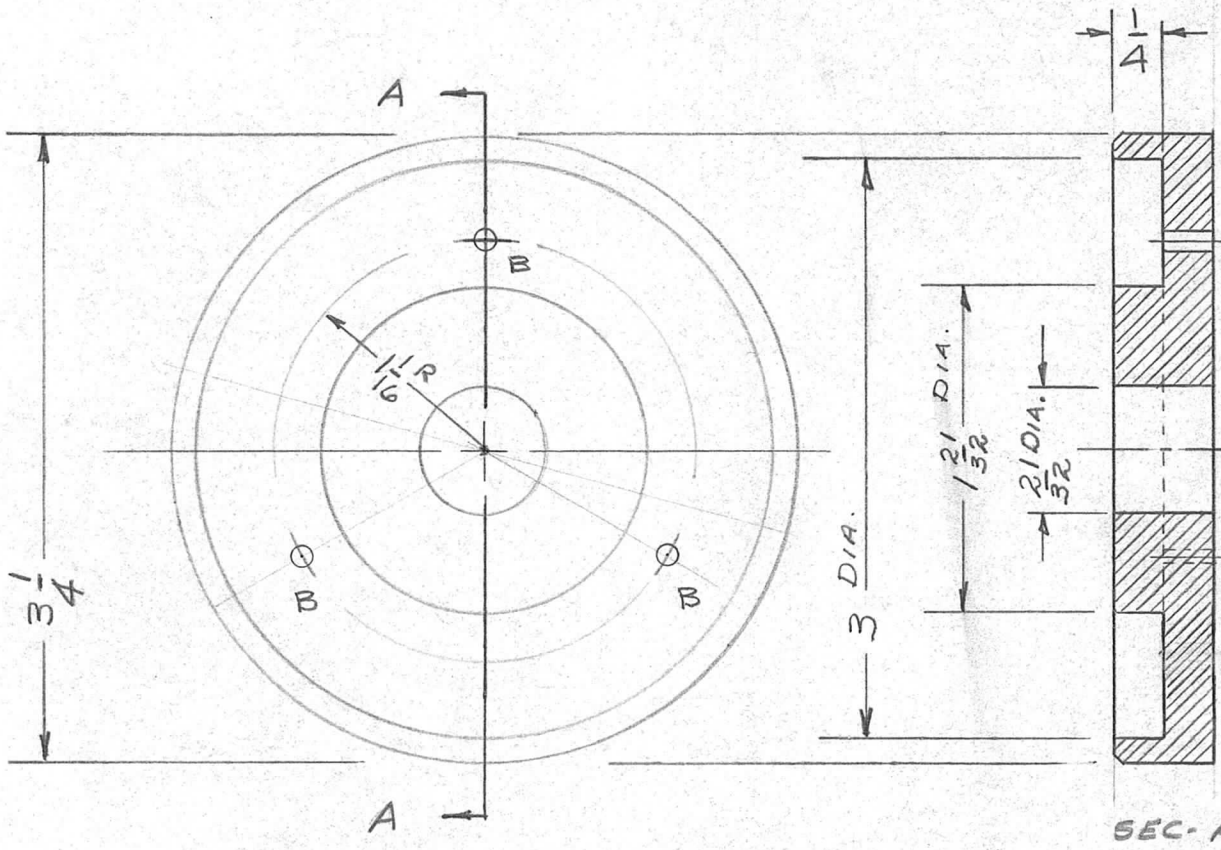


NOTE:
OBSOLETE, NO LONGER REQ FOR AC106
REPLACED BY (2) PX1269 and PX1270

ISSUE	ITEM	CHANGED FROM	DATE	CH. NO.	DRAFTS	CHECKER	ENG. APP.	REQ.	ITEM	PART NO.	DESCRIPTION	SYMBOL					
B		NOTE OBSOLETE ADD	5-5-80	21800	G.D.L.	dwl	[Signature]			3/4 x 3/8 STOCK SIZE	THE TECHNICAL MATERIEL CORP. MAMARONECK, NEW YORK						
A	-	13/64 D - was 13/64 SLOTS	7/6/59		P.I.	HLQ	[Signature]			GLASS BONDED MICA	SUPPORT COIL MOUNTING ATS-50(70)TU-2						
TOLERANCES								SCALE:									
DEC. DIM. ± .001 FRAC. DIM. ± 1/64 ANGULAR DIM. ±								MAXIMUM ALLOWABLE TOLERANCES HAVE BEEN DETERMINED AND ANY DEVIATIONS WILL BE CAUSE FOR REJECTION. REMOVE ALL BURRS AND SHARP EDGES									
								TYPE & TEMPER		HEAT TREAT. SPEC.		DRAWN		CHECKED		FINAL APPROVAL	
												[Signature]		[Signature]			
								FINISH & SPEC. NO.		ELEC. DES. APP		MECH. DES. APP		PX-478 B			

REQ. PER. UNIT	USED ON			PX-479	A
	MODEL	ASS'Y. NO.	DATE		
2	AX-120		9-9-59		

B- #36 DRILL - 120° APART 3 REQ.



NOTICE TO PERSONS RECEIVING THIS DRAWING

THE TECHNICAL MATERIEL CORPORATION claims proprietary right in the material disclosed hereon. This drawing is issued in confidence for engineering information only and may not be reproduced or used to manufacture anything shown hereon without permission from THE TECHNICAL MATERIEL CORPORATION to the user. This drawing is loaned for mutual assistance and is subject to recall at any time.

Property of:
THE TECHNICAL MATERIEL CORPORATION
MAMARONECK, NEW YORK

SEC-A-A

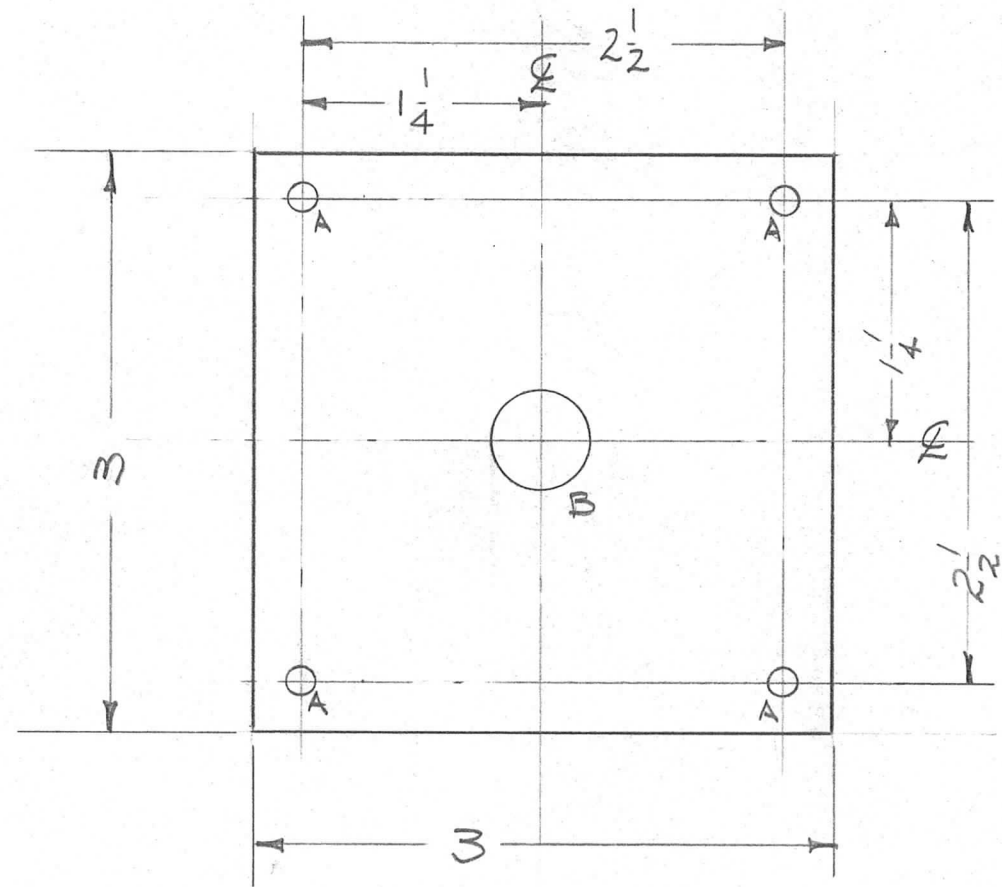
								REQ. ITEM	PART NO.	DESCRIPTION			SYMBOL		
								1/2 THICK		THE TECHNICAL MATERIEL CORP.					
								STOCK SIZE		MAMARONECK, NEW YORK					
								SILICONE		SPACER, CORE, ANT. TUNER					
								MATERIAL							
								G-7	CR	arc		Jide		OMP	
								TYPE & TEMPER		HEAT TREAT. SPEC.		DRAWN		CHECKED	
								CR				S.G.			
								FINISH & SPEC. NO.		ELEC. DES. APP		MECH. DES. APP		PX-479	
														A	

ISSUE	ITEM	CHANGED FROM	DATE	CH. NO.	DRAFTS	CHECKER	ENG. APP.
A	1	MATL. WAS MELAMINE	10-24-62	7526	2	Jide	OMP

TOLERANCES		SCALE:	
DEC. DIM. ±		MAXIMUM ALLOWABLE TOLERANCES HAVE BEEN DETERMINED AND ANY DEVIATIONS WILL BE CAUSE FOR REJECTION.	
FRAC. DIM. ± 1/64		REMOVE ALL BURRS AND SHARP EDGES	
ANGULAR DIM. ±			

REQ. PER. UNIT	USED ON			PX-481
	MODEL	ASS'Y. NO.	DATE	
1	ATSTU-2		6-11-59	

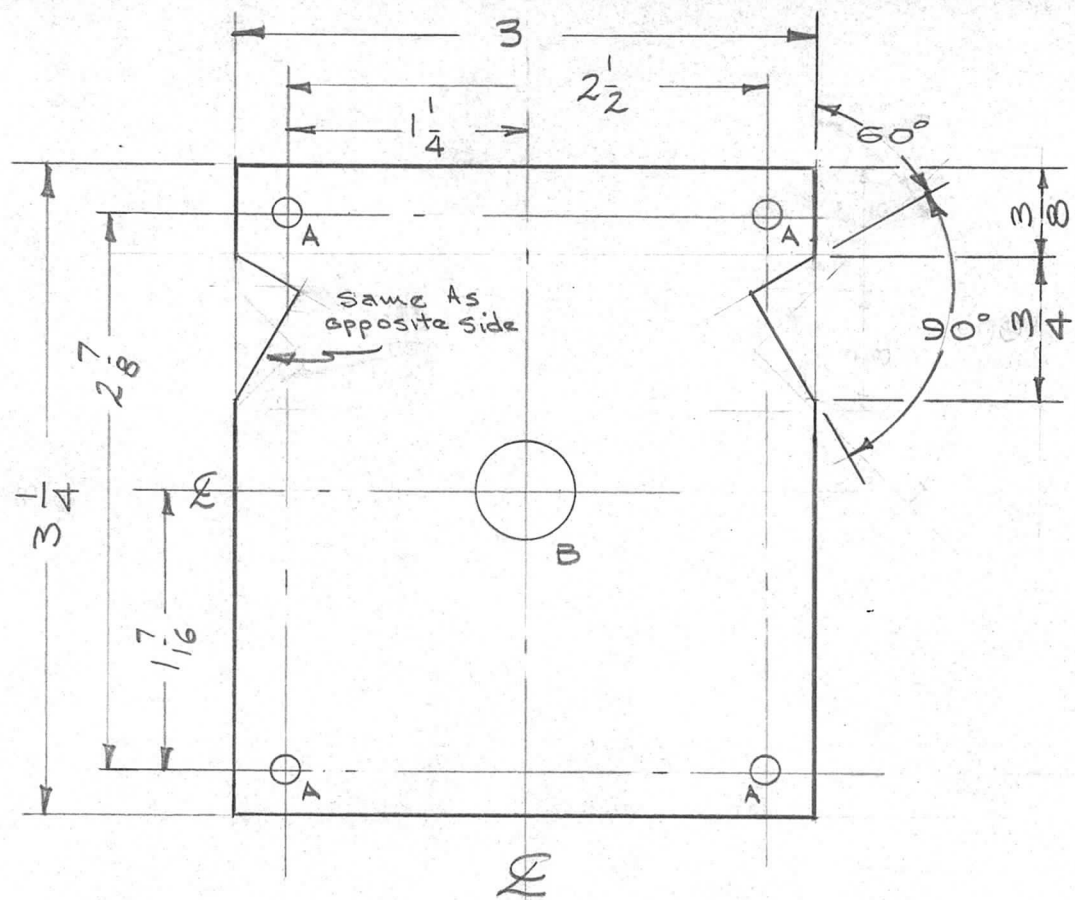
A - $\frac{9}{64}$ (.140) 4 - REQ'D
 B - $\frac{1}{2}$ (.500) D 1 "



ISSUE	ITEM	CHANGED FROM	DATE	CH. NO.	DRAFTS	CHECKER	ENG. APP.	REQ. ITEM	PART NO.	DESCRIPTION	SYMBOL				
								$\frac{1}{4}$		THE TECHNICAL MATERIEL CORP.					
								STOCK SIZE		MAMARONECK, NEW YORK					
								TEFLON		PLATE MTG. OUTPUT TERMINAL					
								MATERIAL		ATS-50(70) TU2					
TOLERANCES			SCALE:							<i>10/11/59</i>	<i>file</i>	<i>APB</i>			
DEC. DIM. \pm			MAXIMUM ALLOWABLE TOLERANCES HAVE BEEN DETERMINED AND ANY DEVIATIONS WILL BE CAUSE FOR REJECTION. REMOVE ALL BURRS AND SHARP EDGES					TYPE & TEMPER	HEAT TREAT. SPEC.	DRAWN	CHECKED	FINAL APPROVAL			
FRAC. DIM. $\pm \frac{1}{64}$															
ANGULAR DIM. \pm															
								FINISH & SPEC. NO.		ELEC. DES. APP	MECH. DES. APP	PX-481			

HOLES
 A - 1/64 (.171) D. - 4
 B - .515 D - 1

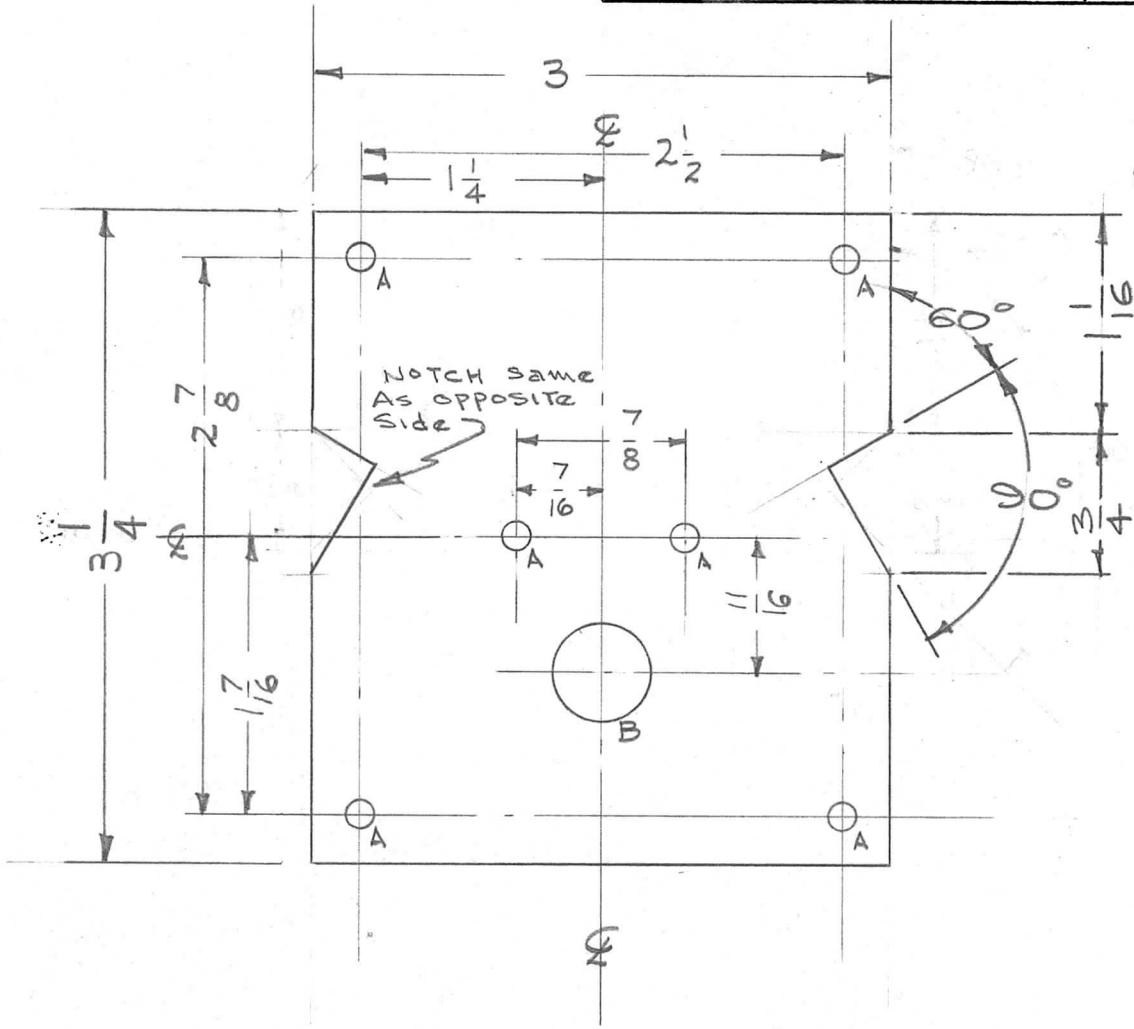
REQ. PER. UNIT	USED ON			PK-482	B
	MODEL	ASS'Y. NO.	DATE		
1	ATS-50(70) Tu 2	A-1769	6-11-59		



ISSUE	ITEM	CHANGED FROM	DATE	CH. NO.	DRAFTS	CHECKER	ENG. APP.
B	1	B Hole was 1/2 (.500) D.	10/1/59	1387	16	<i>[Signature]</i>	<i>[Signature]</i>
A	1	3-1/4 O/A WAS 3-3/8 NOTCHES WERE 5/8 - 5/8	9/22/59	1318	16	<i>[Signature]</i>	<i>[Signature]</i>
TOLERANCES			SCALE: <i>H</i>				
DEC. DIM. ± FRAC. DIM. ± 1/64 ANGULAR DIM. ±			MAXIMUM ALLOWABLE TOLERANCES HAVE BEEN DETERMINED AND ANY DEVIATIONS WILL BE CAUSE FOR REJECTION. REMOVE ALL BURRS AND SHARP EDGES				

REQ.	ITEM	PART NO.	DESCRIPTION		SYMBOL
		1/4 - THICK	THE TECHNICAL MATERIEL CORP.		
		STOCK SIZE	MAMARONECK, NEW YORK		
		TEFLON	INSULATOR, REAR		
		MATERIAL	(Tuning Coil)		
			<i>TORILL</i> 6-11-59	<i>[Signature]</i>	<i>[Signature]</i>
		TYPE & TEMPER	DRAWN	CHECKED	FINAL APPROVAL
		HEATTREAT. SPEC.	<i>[Signature]</i>		
		FINISH & SPEC. NO.	ELEC. DES. APP	MECH. DES. APP	
					PX-482 B

REQ. PER. UNIT	USED ON			PX-483	A
	MODEL	ASS'Y. NO.	DATE		
1	ATS-50(2)T.02	A-1769	6-11-59		

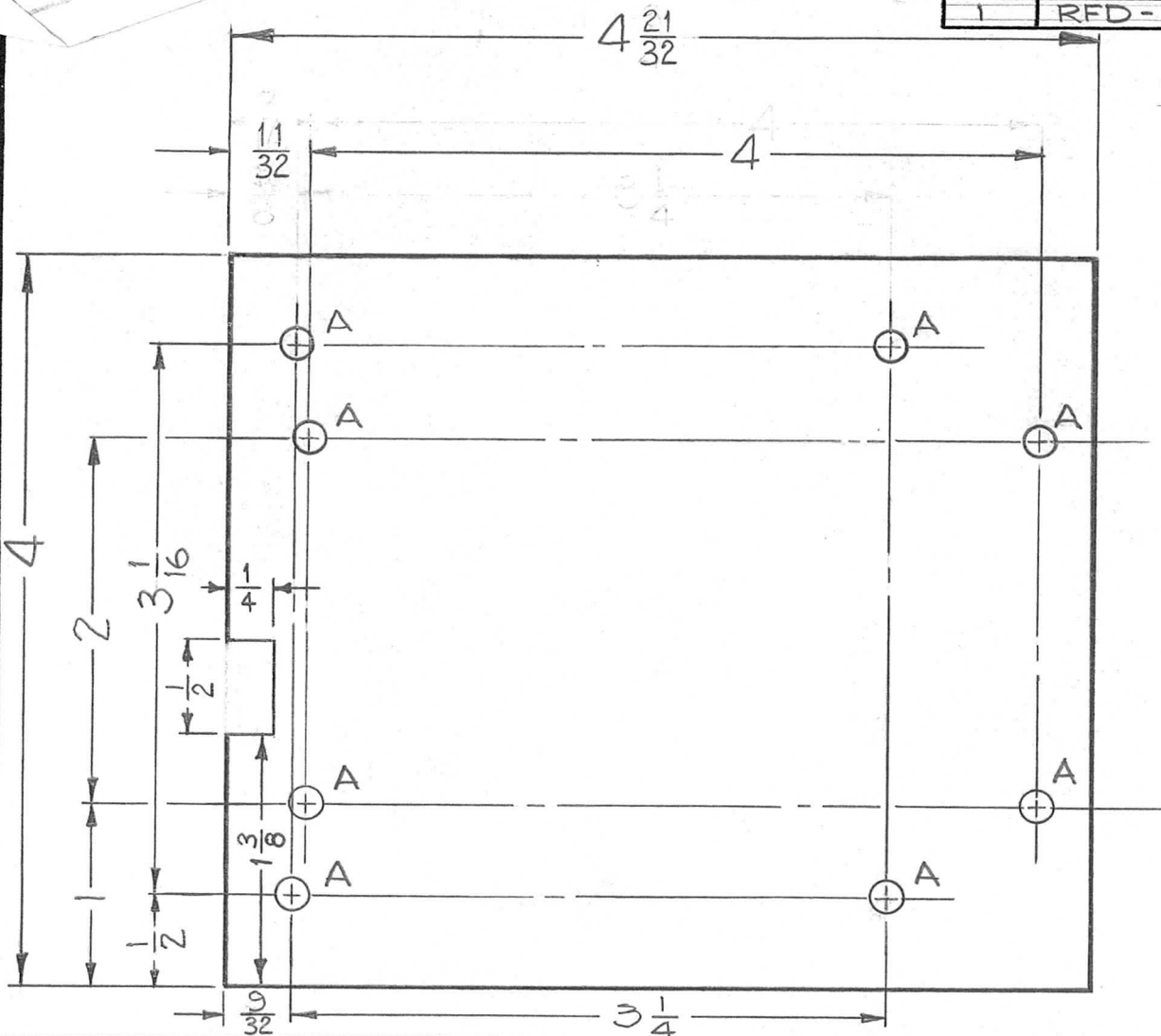


A - 1/64 (171) D 6 REQ'D
 B - (502) D. 1 "

ISSUE	ITEM	CHANGED FROM	DATE	CH. NO.	DRAFTS	CHECKER	ENG. APP.	REQ. ITEM	PART NO.	DESCRIPTION	SYMBOL				
								1/4 THICK		THE TECHNICAL MATERIEL CORP.					
								STOCK SIZE		MAMARONECK, NEW YORK					
A	1	3-1/4 DIA WAS 3-3/8 Notches were 1/16-5/8	1/22/59	1318	16	Jude	AM	TEFLON		INSULATOR, FRONT, CONTACT					
								MATERIAL		(TUNING COIL)					
TOLERANCES			SCALE: $\frac{1}{16}$												
DEC. DIM. \pm			MAXIMUM ALLOWABLE TOLERANCES HAVE BEEN DETERMINED AND ANY DEVIATIONS WILL BE CAUSE FOR REJECTION. REMOVE ALL BURRS AND SHARP EDGES												
FRAC. DIM. \pm 1/64															
ANGULAR DIM. \pm 1.0°															
								TYPE & TEMPER	HEAT TREAT. SPEC.	DRAWN	CHECKED	FINAL APPROVAL			
										Jude	AM				
								FINISH & SPEC. NO.		ELEC. DES. APP	MECH. DES. APP				
												PX-483			

REQ. PER. UNIT	USED ON		
	MODEL	ASSY. NO.	DATE
1	RFD-1	PALIK	6-23-59

PX-484



A ~ 3/16 (.187) DIA. 8 Req.

NOTICE TO PERSONS RECEIVING THIS DRAWING

THE TECHNICAL MATERIEL CORPORATION claims proprietary right in the material disclosed hereon. This drawing is issued in confidence for engineering information only and may not be reproduced or used to manufacture anything shown hereon without permission from THE TECHNICAL MATERIEL CORPORATION to the user. This drawing is loaned for mutual assistance and is subject to recall at any time.

Property of:
THE TECHNICAL MATERIEL CORPORATION
MAMARONECK, NEW YORK

* FUNGUS PROOFING PER TMC SPECIFICATION S-113

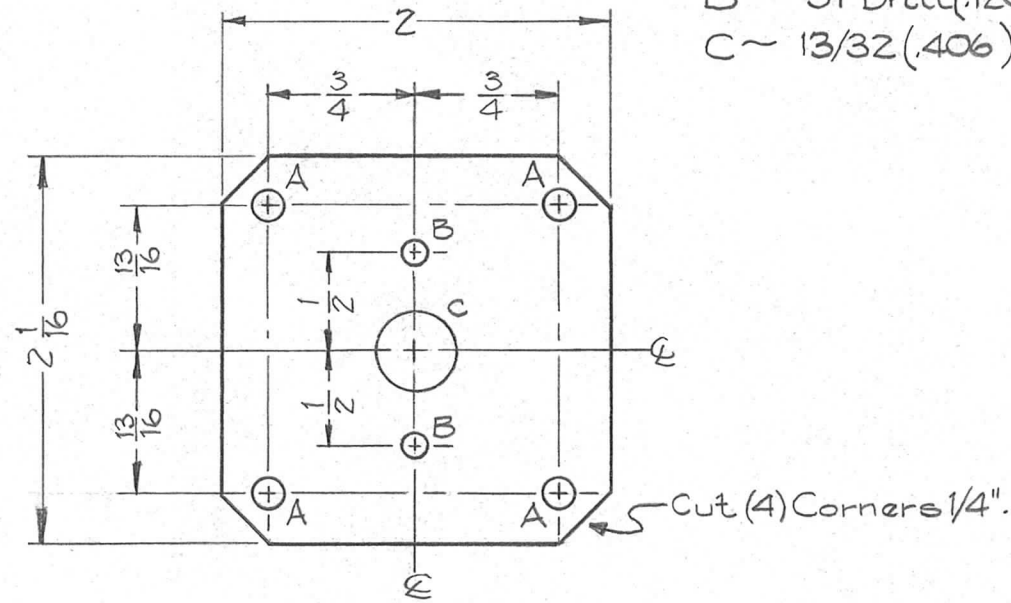
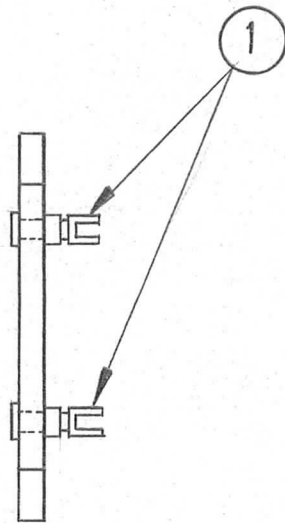
ISSUE	ITEM	CHANGED FROM	DATE	CH. NO.	DRAFTS	CHECKER	ENG. APP.	REQ.	ITEM	PART NO.	DESCRIPTION	SYMBOL				
B		S113 ADDED	4/13/64	11186	AM	Hile	[Signature]				THE TECHNICAL MATERIEL CORP.					
A	4	(1) 1/2 x 1/4 NOTCH ADDED							1/8		MAMARONECK, NEW YORK					
	3	DIM. 9/32 WAS 3/8							STOCK SIZE							
	2	DIM. 11/32 WAS 7/16	2-3-64	4051	W.A.F.	JCS	[Signature]		PHENOLIC		BOARD, MOUNT, COIL					
	1	DIM. 42/32 WAS 43/4							MATERIAL							
TOLERANCES			SCALE: FULL (Do not scale)					XXXXP			J.C. Biele	[Signature]	[Signature]			
DEC. DIM. ±			MAXIMUM ALLOWABLE TOLERANCES HAVE BEEN DETERMINED AND ANY DEVIATIONS WILL BE CAUSE FOR REJECTION. REMOVE ALL BURRS AND SHARP EDGES					TYPE & TEMPER		HEATTREAT. SPEC.	DRAWN	CHECKED	FINAL APPROVAL			
FRAC. DIM. ±								NATURAL *								
ANGULAR DIM. ±								FINISH & SPEC. NO.		ELEC. DES. APP		MECH. DES. APP				PX-484 B

REQ. PER. UNIT	USED ON		
	MODEL	ASS'Y. NO.	DATE
1	BAC-A-S-500	RR-101	11-10-59
1	BAC-A-S-20	RR-101	11-10-59

PX-493

HOLES

A ~ *24 Drill (.152) Dia.	4
B ~ *31 Drill (.120) "	2
C ~ 13/32 (.406) Dia.	1



REF-LO-

								2	1	TE-109-3	SPLIT TERMINAL LUG							
ISSUE	ITEM	CHANGED FROM	DATE	CH. NO.	DRAFTS	CHECKER	ENG. APP.	REQ.	ITEM	PART NO.	DESCRIPTION		SYMBOL					
										1/8	THE TECHNICAL MATERIEL CORP.							
										STOCK SIZE	MAMARONECK, NEW YORK							
										PHENOLIC	TERMINAL BOARD							
										MATERIAL								
										XXXXP								
										TYPE & TEMPER	HEATTREAT. SPEC.	DRAWN	CHECKED	FINAL APPROVAL				
										NATURAL								
										FINISH & SPEC. NO.	ELEC. DES. APP	MECH. DES. APP						
TOLERANCES			SCALE:															
DEC. DIM. ±			MAXIMUM ALLOWABLE TOLERANCES HAVE BEEN DETERMINED AND ANY DEVIATIONS WILL BE CAUSE FOR REJECTION. REMOVE ALL BURRS AND SHARP EDGES															
FRAC. DIM. ±																		
ANGULAR DIM. ±																		
													PX-493					