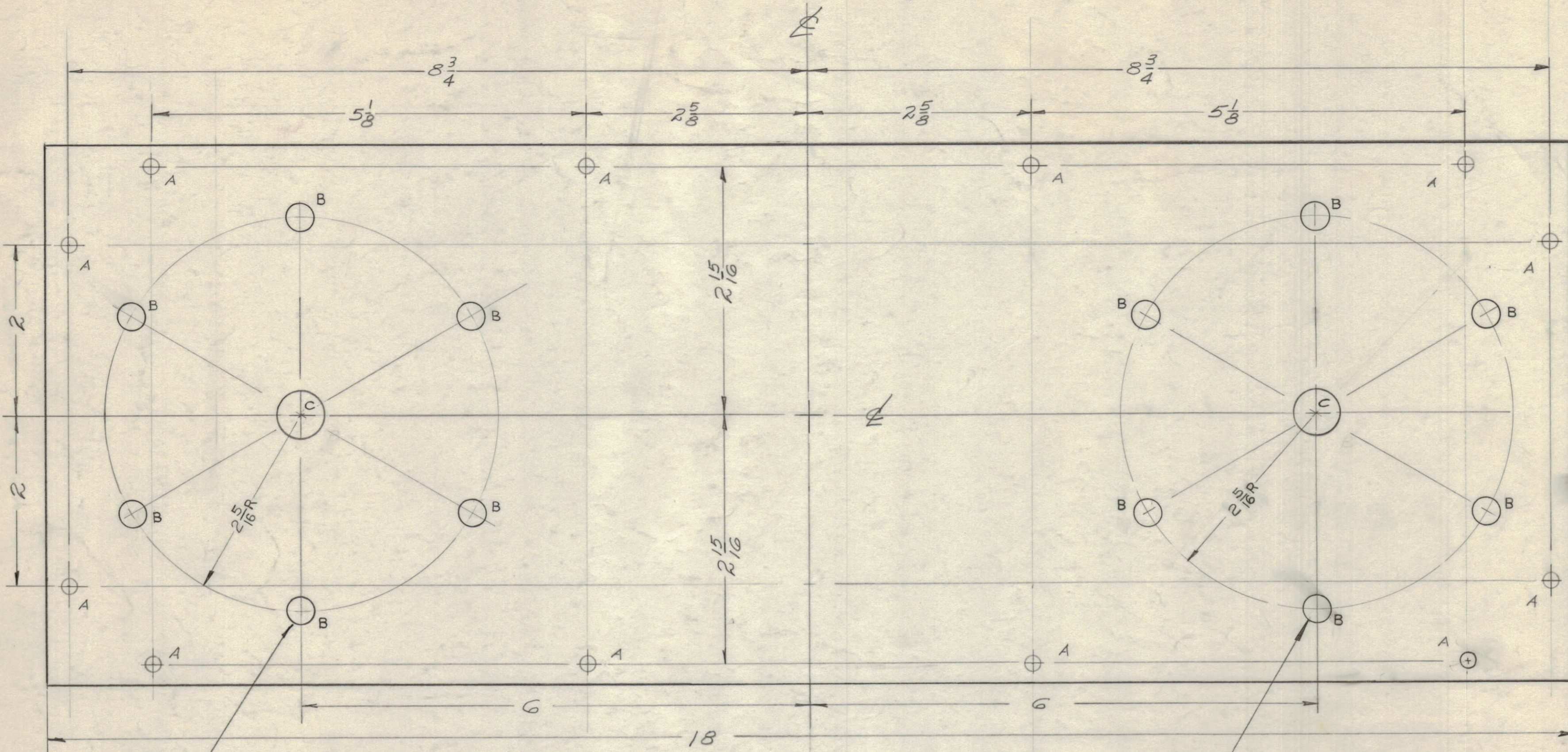


IF IT IS FOUND DESIRABLE TO CHANGE ANY TOLERANCE OR OTHER DETAIL SPECIFIED ON THIS DRAWING NOTIFY THE PURCHASER PROMPTLY.

MAXIMUM ALLOWABLE TOLERANCES HAVE BEEN DETERMINED AND DEVIATIONS WILL BE CAUSE FOR REJECTION. REMOVE ALL BURRS AND SHARP EDGES.



PX-490 A

7 HOLES EQUALLY SPACED 60° APART ON 2.5/16 RADIUS

6 HOLES EQUALLY SPACED 60° APART ON 2.5/16 RADIUS.

HOLE LEGEND

- A ~ 13/64 (.203) DIA. HOLE 12 - REQ.
- B ~ 5/16 (.312) DIA. HOLE 12 - REQ.
- C ~ 9/16 (.562) DIA. HOLE 2 - REQ.

NOTICE TO PERSONS RECEIVING THIS DRAWING
 THE TECHNICAL MATERIEL CORPORATION claims proprietary right in the material disclosed hereon. This drawing is issued in confidence for engineering information only and may not be reproduced or used to manufacture anything shown hereon without permission from THE TECHNICAL MATERIEL CORPORATION to the user. This drawing is loaned for mutual assistance and is subject to recall at any time.

Property of:
 THE TECHNICAL MATERIEL CORPORATION
 MAMARONECK, NEW YORK

ISSUE	2	"C" HOLE LEGEND WAS "B" ADD 7 EQUALLY SPACED HOLES ON 2.5/16 RADII	3/15/60	*	CS	JH	MC
TOLERANCES		SCALE: <i>1/4" = 1"</i>					
ALL OTHERS	DEC. DIM. ± 1/64	DRILL, PUNCH, COMMERCIAL STOCK SIZES AND MANUFACTURERS TOLERANCES ARE NOT INCLUDED.					

REQ. PER UNIT	1	MODEL	AX-192	PROJECT NO.	GPT-10K-THA	ASSY. NO.	KIT	DATE	
USED ON									

REQ. ITEM	PART NO.	DESCRIPTION	SYMBOL
1/4 THICK		THE TECHNICAL MATERIEL CORP. MAMARONECK, NEW YORK	
EPOXY		PLATE, STUD MOUNTING (METER KIT) (3710)	
G-11			
TYPE & TEMPER		DRAWN	ELEC. DES. APP. MECH. DES. APP.
HEAT TREAT. SPEC.		CHECKED	FINAL APPROVAL
FINISH & SPEC. NO.			PX-490 A