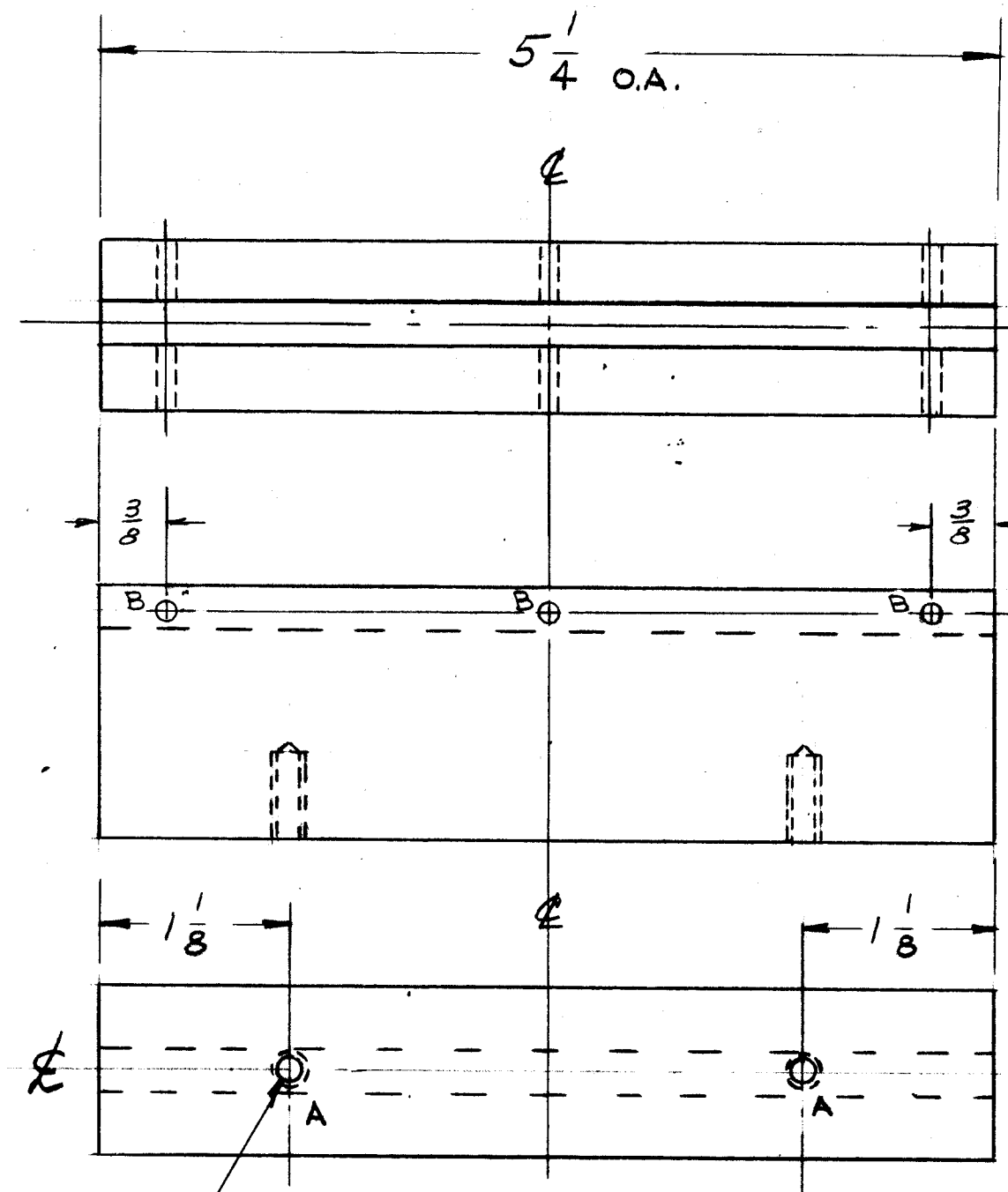


PX-438 H

**NOTES**

- A - HOLES TO BE MACHINED AS FOLLOWS: 2-R  
 1 - #5 DRILL (.203) TO .625 DP.  
 2 - 120° C'SINK, .24-.27 DIA.  
 3 - TAP .420 MIN. DEPTH, USE HELI COIL TAP #3 CPB  
 4 - MOUNT ITEM ① 3/4 TO 1-1/2 PITCH BELOW SURFAL  
 5 - BREAK OFF DRIVING TANG.

B - .120 DIA. (DRILL THRU) 3-REQ



CHAMFER EDGES 1/64 x 1/64

① MOUNT ITEM 1 IN ALL 'A' HOLES AS SHOWN AFTER FINISHING.

**NOTICE TO PERSONS RECEIVING THIS DRAWING**  
 THE TECHNICAL MATERIEL CORPORATION claims proprietary right in the material disclosed hereon. This drawing is issued in confidence for engineering information only and may not be reproduced or used to manufacture anything shown hereon without permission from THE TECHNICAL MATERIEL CORPORATION to the user. This drawing is loaned for mutual assistance and is subject to recall at any time.  
 Property of:  
 THE TECHNICAL MATERIEL CORPORATION  
 MAMARONECK, NEW YORK

ISSUE	ITEM	CHANGED FROM	DATE	CH. NO.	DRAFTS	CHECKER	ENG. APP.
H	1	B HOLES WERE .063 DIA. 2 REQ	5-14-63	8958			
G	2	ITEM ① ADDED	8-8-62	7042			
F	1	NOTES CLARIFIED	2-23-62	6449			
E	1	.255 DIM. WAS .250	6-20-61	5091			
D	2	ADDED CHAMFER EDGES 1/64 x 1/64	3-10-61	4373			
C	1	MATERIAL WAS MELAMINE G10	3-15-60	1899			
B		ADDED (2) 'B' HOLE	8/26/59	1228			
A		ADDED TYPE E TENDER	8/4/59				

TOLERANCES		SCALE:
DEC. DIM. ±		MAXIMUM ALLOWABLE TOLERANCES HAVE BEEN DETERMINED AND ANY DEVIATIONS WILL BE CAUSE FOR REJECTION. REMOVE ALL BURRS AND CHAMFER EDGES
FRAC. DIM. ±	1/64	
ANGULAR DIM. ±		

REQ. PER UNIT	MODEL	PROJECT NO.	ASS'Y. NO.	DATE
1	AC-102	GPT-10K(AT-100)	A-1674	12-31-58
USED ON				

REQ. ITEM	PART NO.	DESCRIPTION	SYMBOL
2	1	NT-139-SCI-20	INSERT, SCREW THREAD
1 x 1/2 x 5/4		STOCK SIZE	
EPOXY		MATERIAL	
G-11		TYPE & TEMPER	HEAT TREAT. SPEC.
DRAWN		CHECKED	FINAL APPROVAL
FINISH & SPEC. NO.		ELEC. DES. APP.	MECH. DES. APP.

PX-438 H