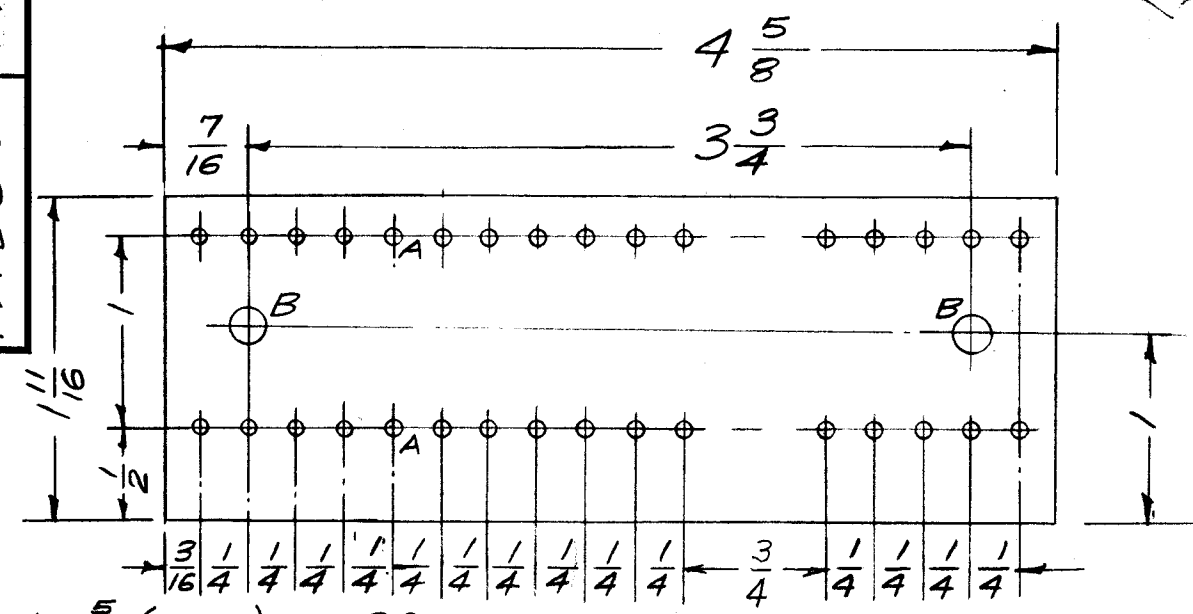
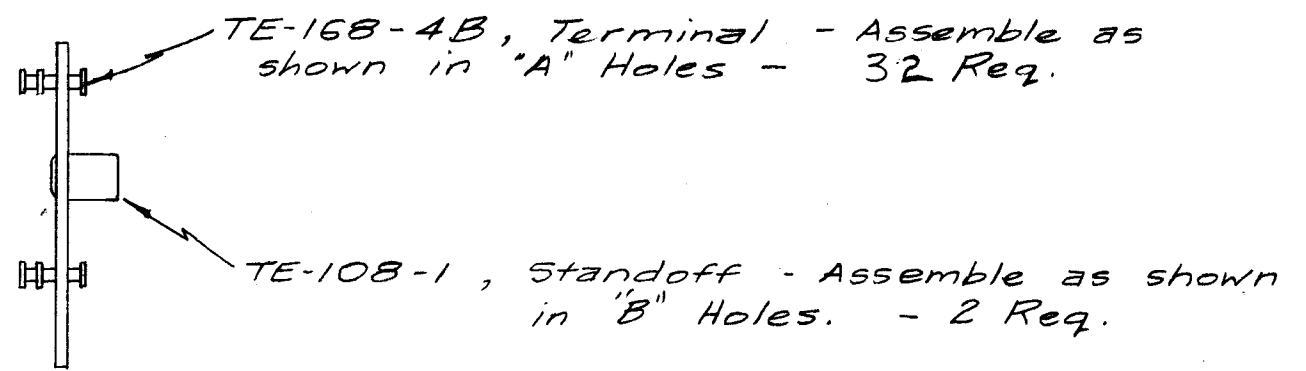


PX-385 D.

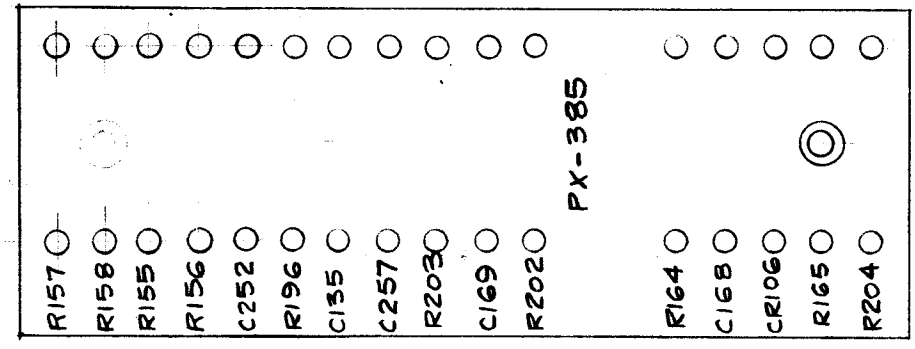


A - $\frac{5}{64}$ (.078) D. - 32 Req.
 B - No. 12 Dr. (.189) D. - 2 Req.

MACHINING

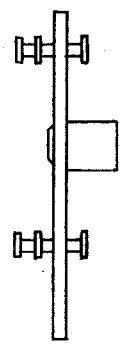


ASSEMBLY



Stamp as Shown

STAMPING



D	1	ITEM 2, WAS 34 REQ.	6/3/60	2425	CS	JLD	JLD
C	1	QUANTITY A - HOLES WAS (34) ADJD DIM.	7/24/58	3	JLD	JLD	JLD
B	1	STAMPING ADDED 10 HOLES ADDED	8/19/57	2	16	203	JLD
A	1	Four Holes Deleted	9/18/57	1	16	203	JLD

ISSUE	ITEM	CHANGED FROM	DATE	CH. NO.	DRAFTS	CHECKER	ENG. APP.
TOLERANCES		SCALE:					
DEC. DIM. ±		MAXIMUM ALLOWABLE TOLERANCES HAVE BEEN DETERMINED AND ANY DEVIATIONS WILL BE CAUSE FOR REJECTION.					
FRAC. DIM. ± 1/64		REMOVE ALL BURRS AND SHARP EDGES					
ANGULAR DIM. ±							

1	SBE-1*2	A-1464(2)	9/11/57
REQ. PER UNIT	MODEL	PROJECT NO.	DATE
USED ON			

32	2	TE-168-4B	Terminal	
2	1	TE-108-1	Standoff	
REQ. ITEM	PART NO.		DESCRIPTION	SYMBOL
1/16 THK.			THE TECHNICAL MATERIEL CORP.	
STOCK SIZE			MAMARONECK. NEW YORK	
Phenolic			TERMINAL BOARD,	
MATERIAL			RF CHASSIS (SBE-1)	
xxxp		6/11/57	JLD	JLD
Laminate			JLD	JLD
TYPE & TEMPER		HEAT TREAT. SPEC.		FINAL APPROVAL
Natural				PX-385 D
FINISH & SPEC. NO.		ELEC. DES. APP.		MECH. DES. APP.