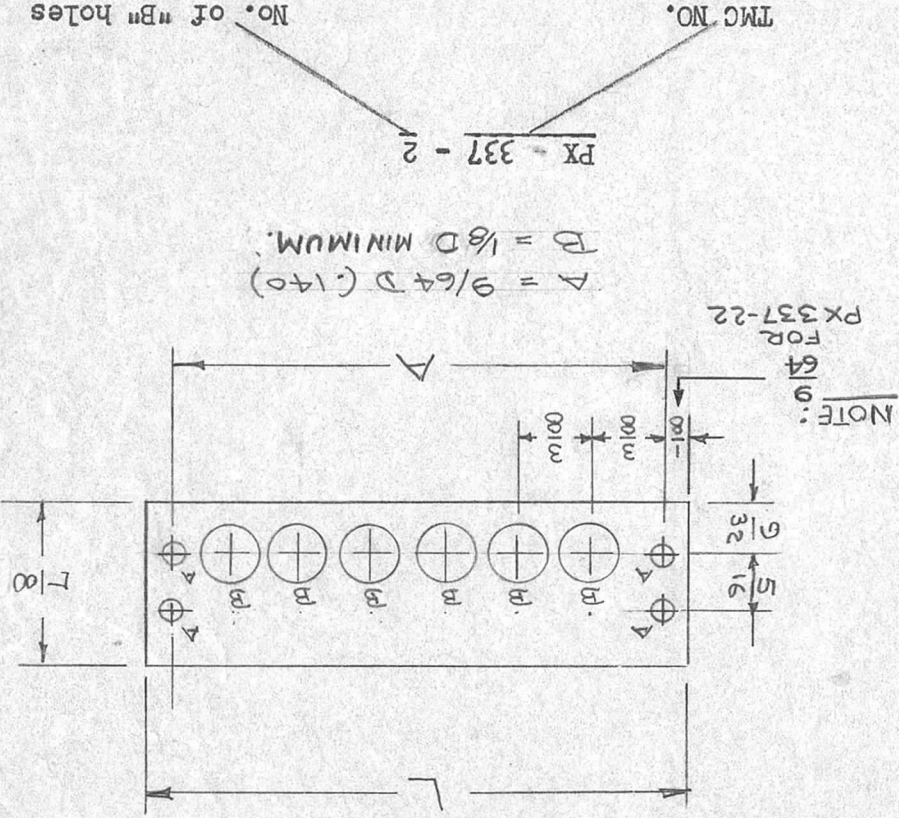


STANDARD DRAWING

TMC NO	"A"	"L"
PX-337-2	1 1/8	1 3/8
-3	1 1/2	1 3/4
-4	1 7/8	2 1/8
-5	2 1/4	2 1/2
-6	2 5/8	2 7/8
-7	3	3 1/4
-8	3 3/8	3 5/8
-9	4	4
-10	4 1/8	4 3/8
-11	4 1/2	4 3/4
-12	4 7/8	5 1/8
-13	5 1/4	5 1/2
-14	5 5/8	5 7/8
-15	6	6 1/4
-16	6 3/8	6 5/8
-17	6 3/4	7
-18	7 1/8	7 3/8
-19	7 1/2	7 3/4
-20	7 7/8	8 1/8
-21	8 1/4	8 1/2
-22	8 5/8	8 29/32



REQ. PER UNIT

1 AMD-1
1 AMD-2

USED ON

MODEL ASS'Y. NO. DATE
AMD-1
4/25/58

PX-337

E

DEC. DIM. ±		FRAC. DIM. ±		ANGULAR DIM. ±	
MAXIMUM ALLOWABLE TOLERANCES HAVE BEEN DETERMINED AND ANY DEVIATIONS WILL BE CAUSE FOR REJECTION. REMOVE ALL BURRS AND SHARP EDGES					
SCALE:					
TOLERANCES					
ISSUE ITEM	CHANGED FROM	DATE	CH. NO.	DRAFTS	CHECKER
A	1 REF WAS TM-102	8/1/56	1	AW	AW
B	1 "A" length clarified	10/23/56	2	AW	AW
C	1 Reinstated, WAS Omitted.	5-26-60	2356	AW	AW
D	1-2 PX-337-22 Add. TYPE 3 TEMPER WAS XXX PANOLITE	8-31-64	12256	AW	AW
E	1 "B" HOLE WAS 5/16 D	10/8/65	14950	AW	AW

REQ. ITEM	PART NO.	DESCRIPTION	SYMBOL
		THE TECHNICAL MATERIEL CORP. MAMARONECK, NEW YORK	
	1/32	STOCK SIZE	
		XXX-P PHENOLIC OR FIBER	
		Insulator, Terminal Strip	
		Barrier Lug Type	
		HEAT TREAT. SPEC.	
		DRAWN	
		CHECKED	
		FINAL APPROVAL	
		FINISH & SPEC. NO.	
		ELEC. DES. APP.	
		MECH. DES. APP.	
		PX-337	