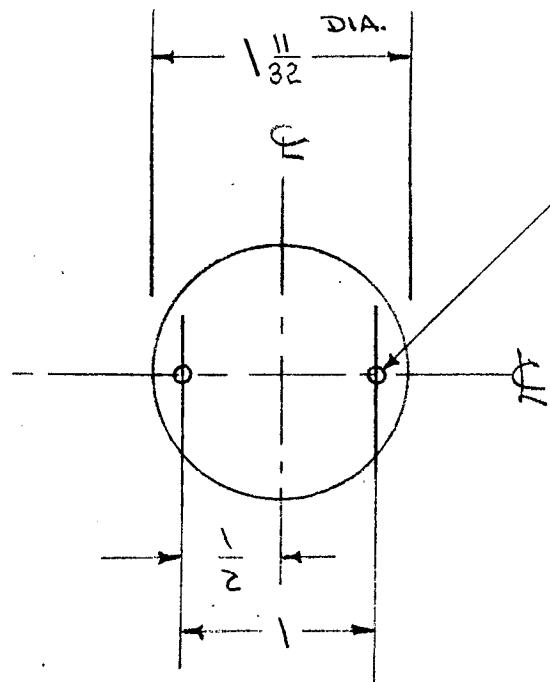


IF IT IS FOUND DESIRABLE TO CHANGE ANY TOLERANCE OR OTHER DETAIL SPECIFIED ON THIS DRAWING NOTIFY THE PURCHASER PROMPTLY.

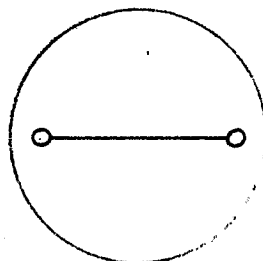
PX-240 B

MAXIMUM ALLOWABLE TOLERANCES HAVE BEEN DETERMINED AND DEVIATIONS WILL BE CAUSE FOR REJECTION. REMOVE ALL BURRS AND SHARP EDGES

REQ. PER UNIT	USED ON			
	MODEL	PROJECT NO.	ASS'Y. NO.	DATE
1	PMO-1	285		9-15-54
1	PMO-2	285		9-15-54
1	VOX-1, 2	291		1-12-55
1	RTF			2-1-56
1	RTF-2	F/P		11/4/58



NO. 50 (.070) 2 HOLES REQ.



SCRIBE LINE - RED FILLED AS ABOVE (.005 WIDE).

CUT & DRILL AS ABOVE

(See PX-377 for Plain Lens)

REQ.	ITEM	PART NO.	DESCRIPTION	SYMBOL
		.040 ±.015	THE TECHNICAL MATERIEL CORP.	
		STOCK SIZE	MAMARONECK, NEW YORK	
		PLEXIGLAS	DIAL LENS	
		MATERIAL	(FRONT PANEL)	
		WEIGHT PER PC.	C.O.D. 9/15/54	
		TYPE & TEMPER	DRAWN	ELEC. DES. APP.
			CHECKED	MECH. DES. APP.
		HEAT TREAT. SPEC.	FINAL APPROVAL	
		FINISH & SPEC. NO.	PX-240 B	

ISSUE	ITEM	CHANGED FROM	DATE	CN. NO.	DRAFTS	CHECKER	ENG. APP.
B	1	Stock Size Tol. Added	12/8/58	2	J.H.B.		
A	1	1 11/32 WAS 15/16	10-15-54	1	P.B.		

TOLERANCES

SCALE

ALL OTHERS

DEC. DIM. ±

FRAC. DIM. ± $\frac{1}{64}$

ANGULAR DIM. ±

DRILL, PUNCH, COMMERCIAL STOCK SIZES AND MANUFACTURERS TOLERANCES ARE NOT INCLUDED.