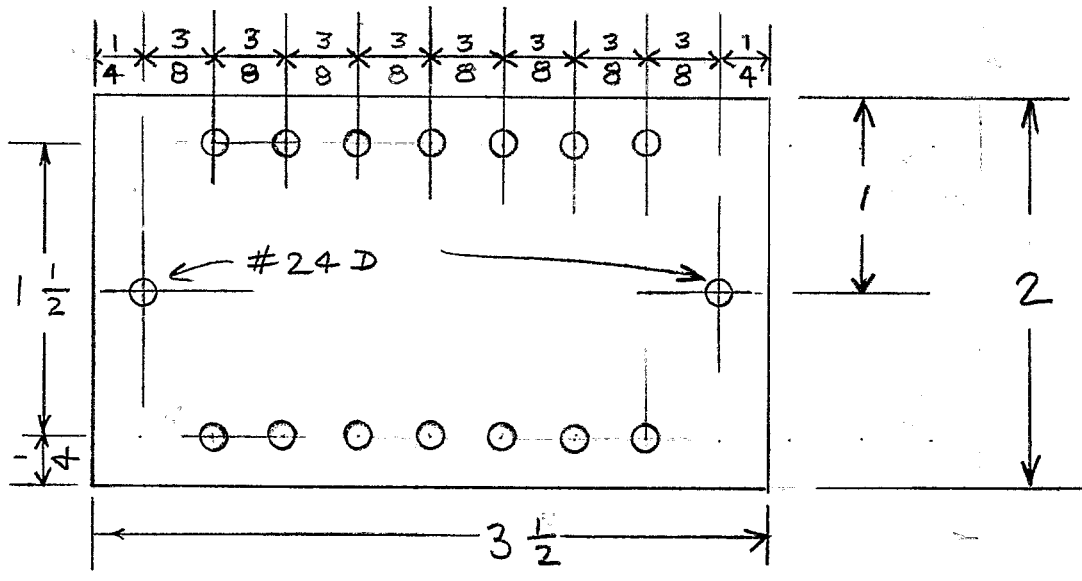
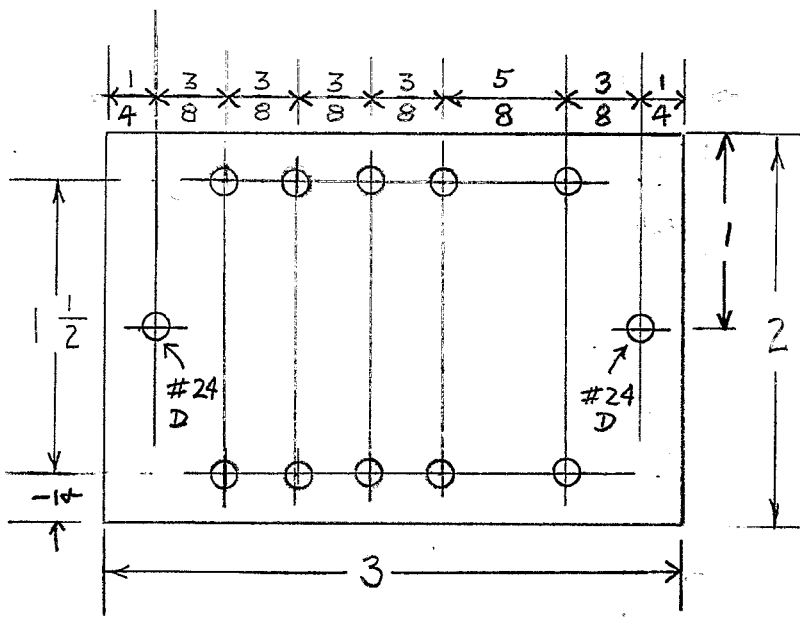


PX-211

15



Terminal Board #1



Terminal Board #2

Material xxx Natural
 Bakelite $\frac{1}{8}$ " Thick
 Terminals CTC-S1245D
 Terminal Mtg holes
 #33 Drill
 one each per unit

WAS AMS040
 1/26/54

DATE	1/4/51
DRN.	CMH
CHKD.	
APPD.	<i>hm</i>

Terminal Boards
 Model TAK-1

THE TECHNICAL MATERIEL
 CORPORATION
 MAMARONECK, NEW YORK