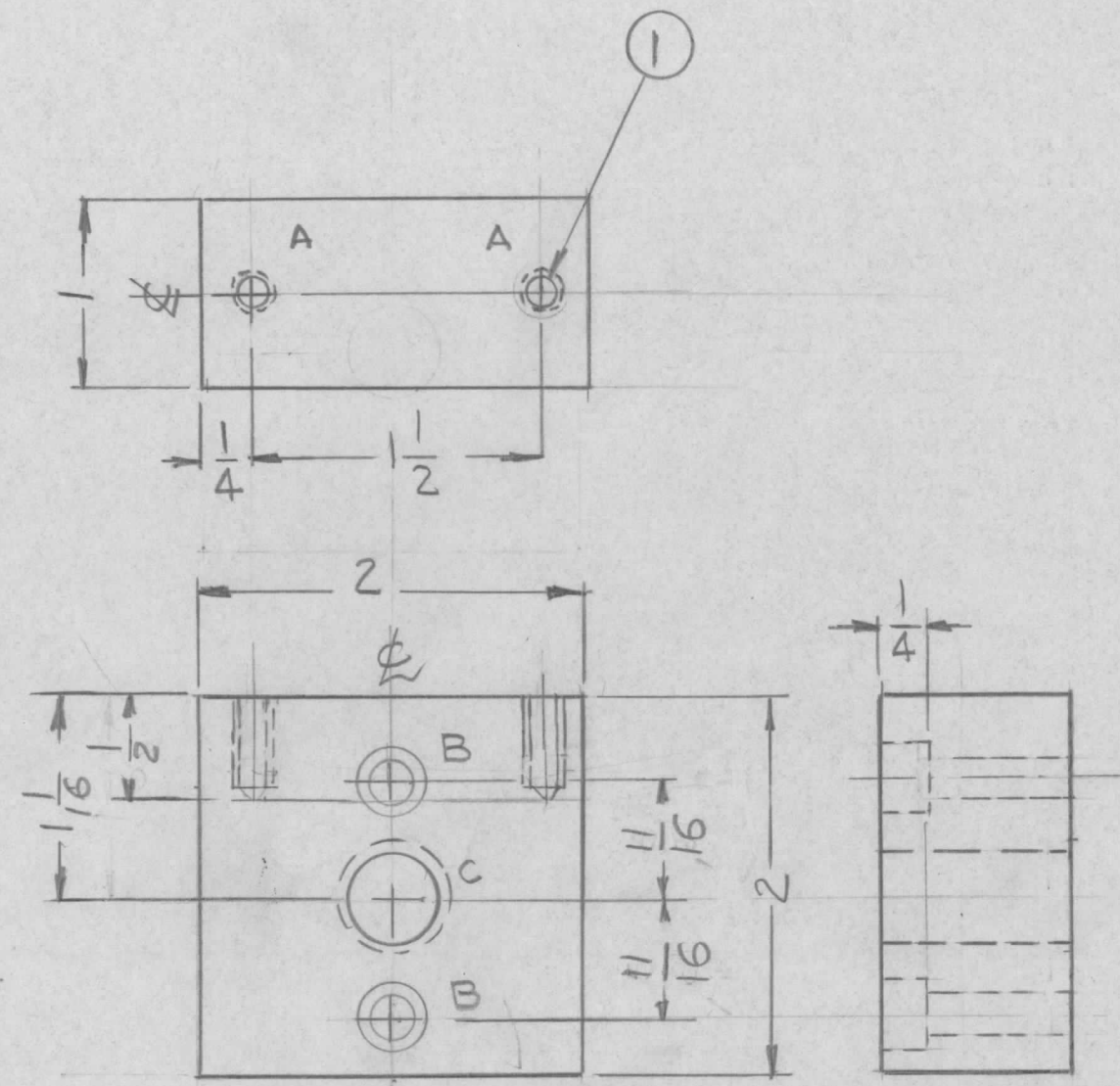


REVISIONS							
E.M.N. NO.	DRAFT	CHKD	ZONE	LTR	DESCRIPTION	DATE	APPROVED
H	dw			Ø	ORIGINAL RELEASE	10-10-80	



HOLES  
 A-DRILL FOR INSERT 8-32  
 B- 9/32 THRU, BOARD 3/8 X 1/4 DEEP 2 REQ'D  
 C- .500<sup>+0.004</sup>/<sub>-.000</sub> THRU BOARD 5/8 X 1/4 DEEP

REQ'D	ITEM	PART NUMBER	DESCRIPTION	SYM.
2	1	NT139-SC08-20	INSERT, SCREW THRD.	A

LIST OF MATERIAL

1	HFL( )10K REV B	AX 804
QTY / UNIT	MODEL USED ON	ASS'Y NO.
APPLICATION		
CODE		

NOTICE TO PERSONS RECEIVING THIS DRAWING  
 THE TECHNICAL MATERIEL CORPORATION claims proprietary right in the material disclosed hereon. This drawing is issued in confidence for engineering information only and may not be reproduced or used to manufacture anything shown hereon without permission from THE TECHNICAL MATERIEL CORPORATION to the user. This drawing is loaned for mutual assistance and is subject to recall at any time.

UNLESS OTHERWISE SPECIFIED DIMENSIONS ARE IN INCHES AND INCLUDE CHEMICALLY APPLIED OR PLATED FINISHES

DECIMALS .X ± .05  
 .XX ± .01  
 .XXX ± .005

FRACTIONS 1/64  
 TOLS. ANGLES 0° -30'

MATERIAL XXXP  
 PHENOLIC

FINISH NATURAL

FINAL APPROVAL [Signature] DATE 10/2/80  
 MECH. DES. DATE  
 ELECT. DES. DATE  
 CHECKED DATE  
 DRAWN G.D.L. DATE 8/4/80

THE TECHNICAL MATERIEL CORP.  
 MAMARONECK, NEW YORK

BLOCK, DECOUPLING

SIZE B	CODE IDENT. NO. 82679	DWG NO. PX 1276	ISSUE Ø
SCALE 1:1	SHEET OF		