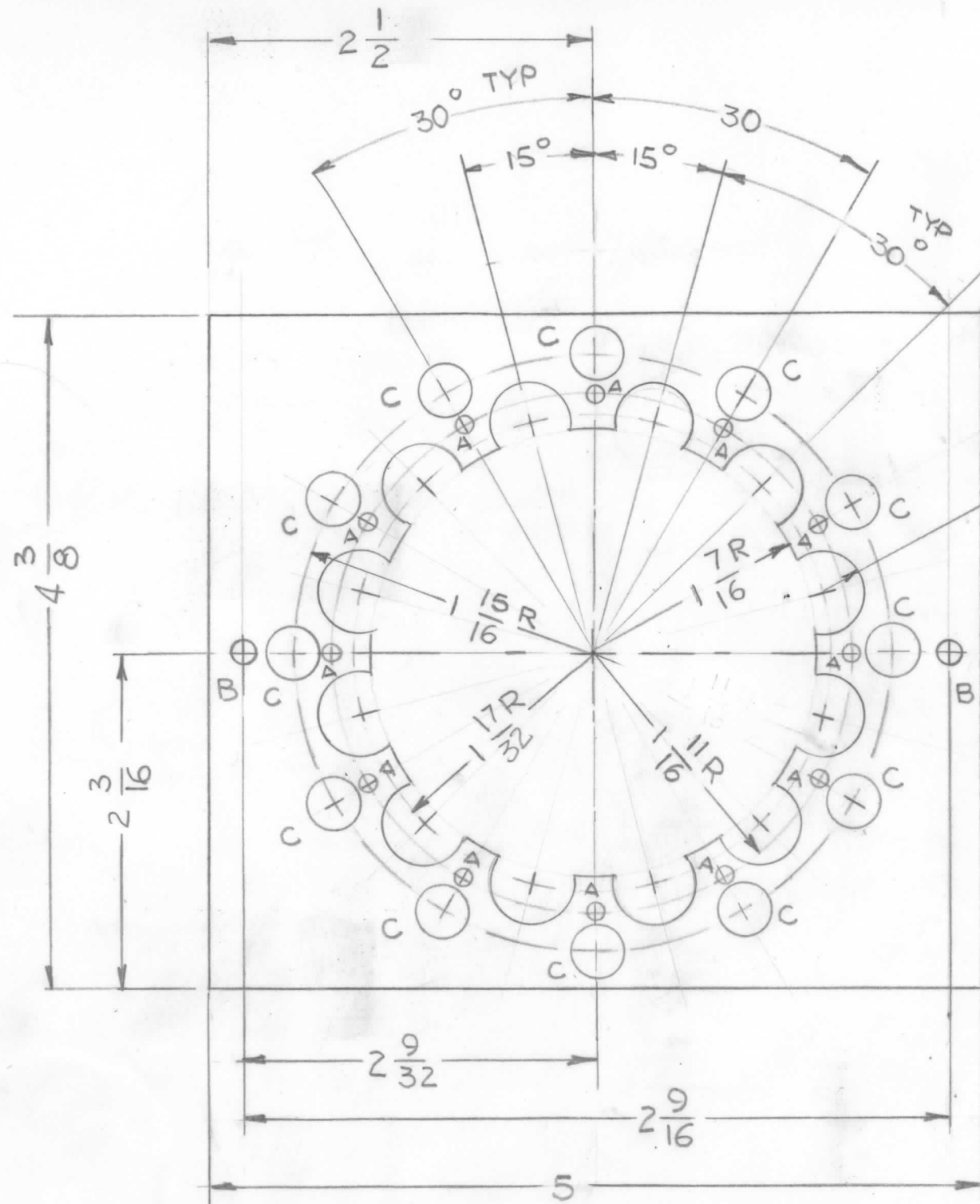


REVISIONS							
E.M.N. NO.	DRAFT	CHKD	ZONE	LTR	DESCRIPTION	DATE	APPROVED
21770	GDL			A	REDRAWN & UPDATED	1-23-80	F.B.



HOLES:

- A - 1/8 DIA 12 REQ'D
- B - 3/16 DIA 2 REQ'D
- C - 21/64 DIA 12 REQ'D

1	MFT-10K / J	AX 5241
QTY / UNIT	MODEL USED ON	ASS'Y NO.
APPLICATION		
	CODE	

**NOTICE TO PERSONS RECEIVING THIS DRAWING**  
 THE TECHNICAL MATERIEL CORPORATION claims proprietary right in the material disclosed hereon. This drawing is issued in confidence for engineering information only and may not be reproduced or used to manufacture anything shown hereon without permission from THE TECHNICAL MATERIEL CORPORATION to the user. This drawing is loaned for mutual assistance and is subject to recall at any time.

UNLESS OTHERWISE SPECIFIED DIMENSIONS ARE IN INCHES AND INCLUDE CHEMICALLY APPLIED OR PLATED FINISHES

DECIMALS	FRACTIONS
.X ± .05	1/64
.XX ± .01	TOLS. ANGLES
.XXX ± .005	0° - 30'

MATERIAL 1/8 THK G7 SILICON GLASS  
 FINISH NATURAL

REQ'D	ITEM	PART NUMBER	DESCRIPTION	SYM.
LIST OF MATERIAL				
THE TECHNICAL MATERIEL CORP. MAMARONECK, NEW YORK				
WAFER, LOAD SW				
SIZE	CODE IDENT. NO.	DWG NO.	ISSUE	
B	82679	PX 1265	A	
SCALE	1:1	SHEET	OF	