

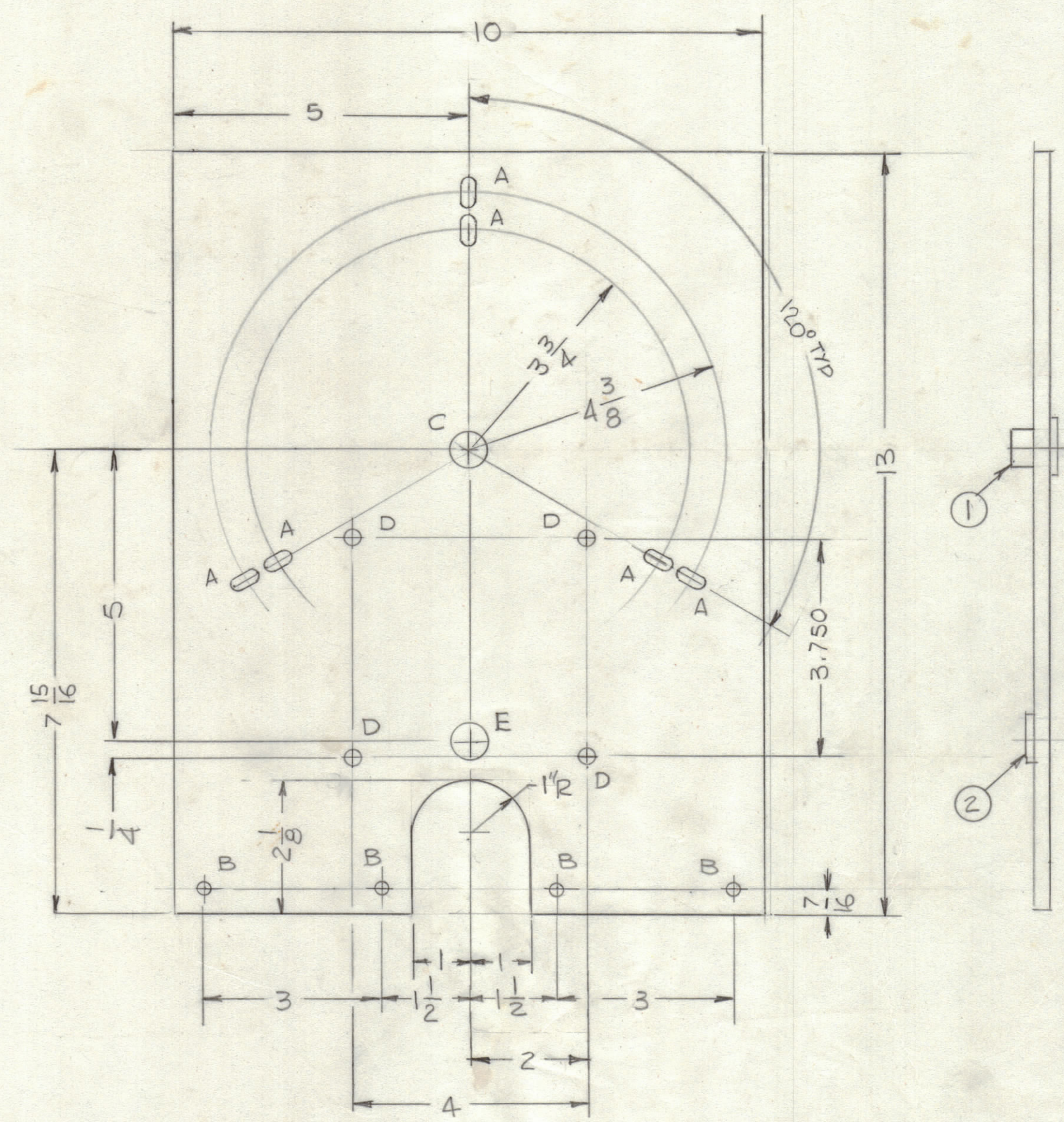
4

3

2

1

REVISIONS						
ZONE	LTR	DESCRIPTION	DATE	E.M.N.NO	DRAFT	CHKD APPD
	Ø	ORIGINAL RELEASE FOR PRODUCTION	8-28-79		MAC	



- HOLES
- A- 1/4 X 1/2 SLOT 6REQ'D
 - B- 15/64 DIA 3REQ'D
 - C- .628 +.0005 1REQ'D
-.0000
 - D- 9/32 DIA 4REQ'D
 - E- .625 +.0005 1REQ'D
-.0000

QTY. REQ.	ITEM	PART NO.	DESCRIPTION	SYMBOL
1	2	BB-126-5	BRG, BALL ANNL	E
1	1	BB-118-30	BRG, SLV, 1/FLG	C

LIST OF MATERIAL

UNLESS OTHERWISE SPECIFIED DIMENSIONS ARE IN INCHES AND INCLUDE CHEMICALLY APPLIED OR PLATED FINISHES

TOLERANCES ON

DECIMALS	FRACTIONS
.X ± .05	± 1/64
.XX ± .01	ANGLES
.XXX ± .005	± 0° -30'

MATERIAL 1/4THK EPOXY-6-11

FINISH NATURAL 5113 FUNGUS PROOF

FINAL APPROVAL	DATE
<i>G.D.L.</i>	8/28/79
MECH. DES.	DATE
ELECT. DES.	DATE
CHECKED	DATE
DRAWN	DATE
G.D.L.	5-25-78

THE TECHNICAL MATERIEL CORP. MAMARONECK, NEW YORK			
PLATE BANDSWITCH FRONT			
SIZE	CODE IDENT.NO.	DWG NO.	ISSUE
C	82679	PX 1264	Ø
SCALE		SHEET	OF

1	MFTA-10K/3 (400Hz)	AS166
QTY / UNIT	MODEL USED ON	ASS'Y NO.
	APPLICATION	
	CODE	
<p>NOTICE TO PERSONS RECEIVING THIS DRAWING</p> <p>THE TECHNICAL MATERIEL CORPORATION claims proprietary right in the material disclosed hereon. This drawing is issued in confidence for engineering information only and may not be reproduced or used to manufacture anything shown hereon without permission from THE TECHNICAL MATERIEL CORPORATION to the user. This drawing is loaned for mutual assistance and is subject to recall at any time.</p>		

4

3

2

1

PX 1264