

IF IT IS FOUND DESIRABLE TO CHANGE ANY TOLERANCE OR OTHER DETAIL SPECIFIED ON THIS DRAWING NOTIFY THE PURCHASER PROMPTLY.

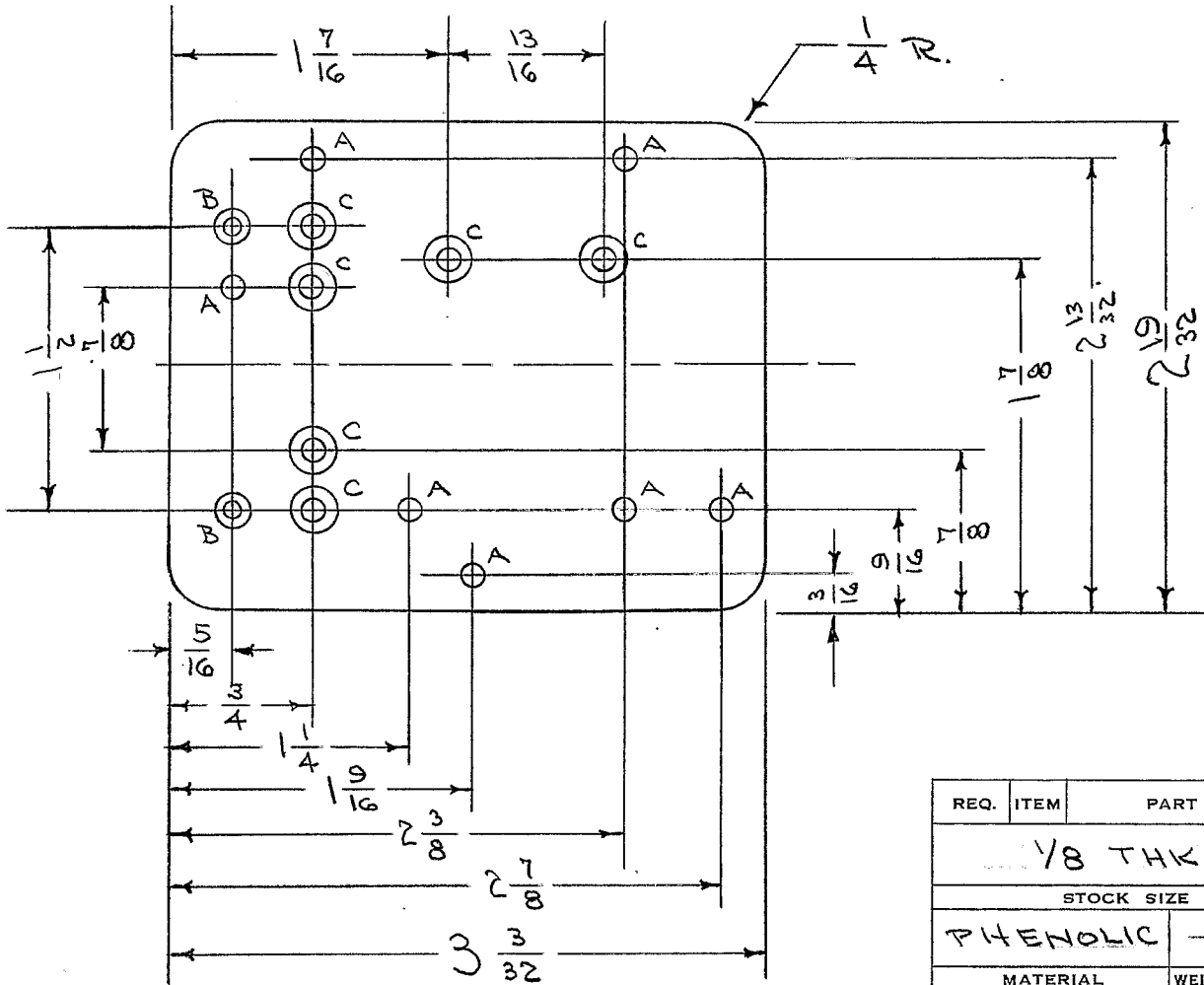
PX-101

MAXIMUM ALLOWABLE TOLERANCES HAVE BEEN DETERMINED AND DEVIATIONS WILL BE CAUSE FOR REJECTION. REMOVE ALL BURRS AND SHARP EDGES

REQ. PER UNIT

USED ON

REQ. PER UNIT	MODEL	PROJECT NO.	ASS'Y. NO.	DATE
1	BAC-1-S-20	108	A-111	7/15/52



A - NO. 22 (.157) DRILL 7 HOLES REQ.  
 B - DRILL & C'SINK FOR 4-40 F.H.S 2 " "  
 C - DRILL & C'SINK FOR 6-32 F.H.S 6 " "

REQ.	ITEM	PART NO.	DESCRIPTION	SYMBOL
		1/8 THK.	THE TECHNICAL MATERIEL CORP.	
		STOCK SIZE	MAMARONECK, NEW YORK	
	PHENOLIC	— # —	BOARD, TERMINAL	
		WEIGHT PER PC.	BAC-1-S-20	
		XXXP LAMINATE		
		TYPE & TEMPER	CDD. 1-12-54	
		#	DRAWN	ELEC. DES. APP. MECH. DES. APP.
		HEAT TREAT. SPEC.	CHECKED	FINAL APPROVAL
		NATURAL		PX-101
		FINISH & SPEC. NO.		

ISSUE	ITEM	CHANGED FROM	DATE	CN. NO.	DRAFTS	CHECKER	ENG. APP.
		REDRAWN - NO CHANGE	1-12-54		CD.D.	JAD	WDC

TOLERANCES

SCALE: 1/8" = 1"

ALL OTHERS: DEC. DIM. ± 1/64, FRAC. DIM. ± 1/64, ANGULAR DIM. ±

DRILL, PUNCH, COMMERCIAL STOCK SIZES AND MANUFACTURERS TOLERANCES ARE NOT INCLUDED.

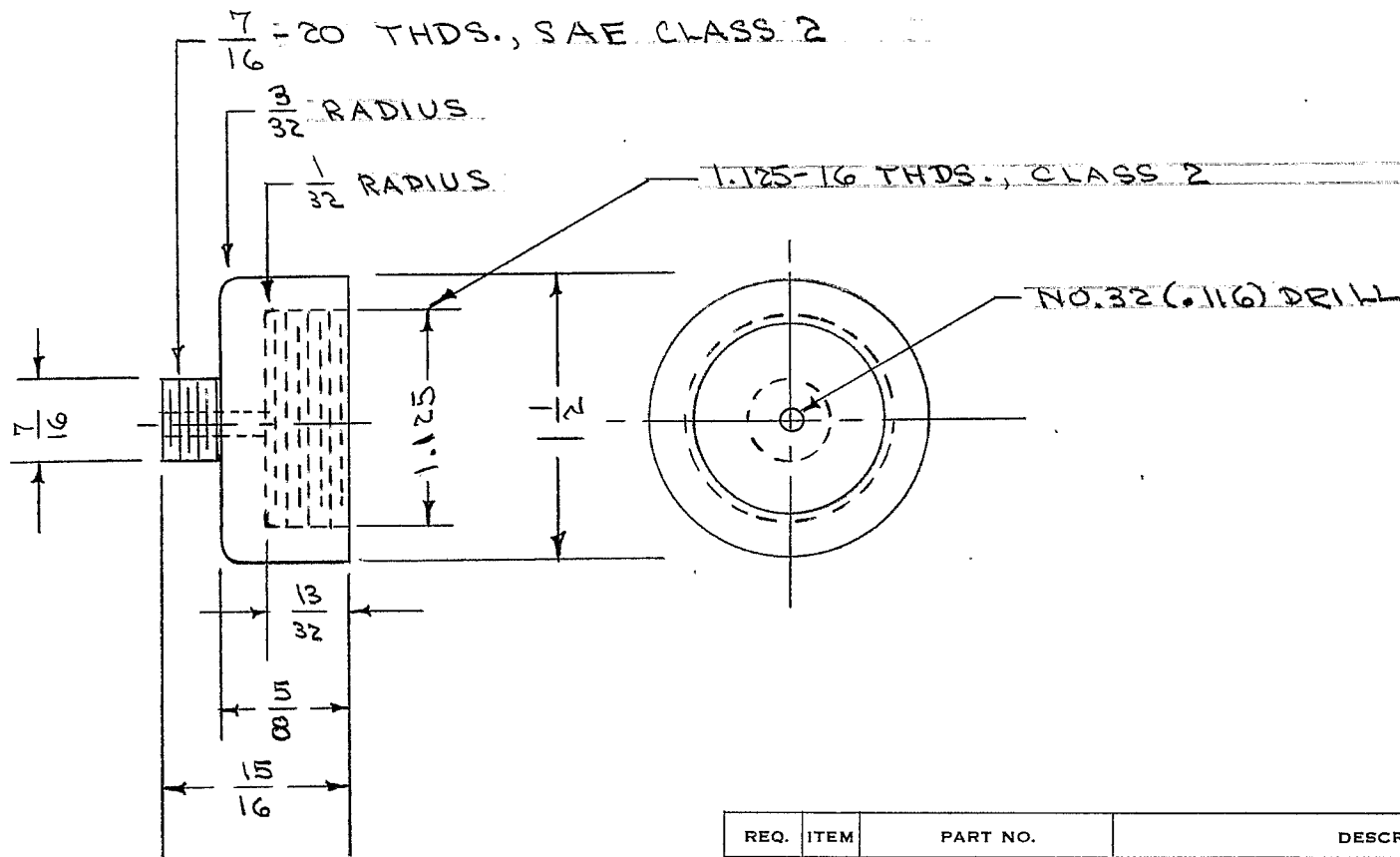
IF IT IS FOUND DESIRABLE TO CHANGE ANY TOLERANCE OR OTHER DETAIL SPECIFIED ON THIS DRAWING NOTIFY THE PURCHASER PROMPTLY.

PX-102

MAXIMUM ALLOWABLE TOLERANCES HAVE BEEN DETERMINED AND DEVIATIONS WILL BE CAUSE FOR REJECTION. REMOVE ALL BURRS AND SHARP EDGES

USED ON

MODEL	PROJECT NO.	ASS'Y. NO.	DATE
ES 85/U	135	A-113	7/23/52



REQ.	ITEM	PART NO.	DESCRIPTION	SYMBOL
			THE TECHNICAL MATERIEL CORP. MAMARONECK. NEW YORK	
		STOCK SIZE		
	TEFLON		CAP	
	MATERIAL	WEIGHT PER PC.		
			CIPD. 2-12-54	
		TYPE & TEMPER		
			DRAWN	ELEC. DES. APP. MECH. DES. APP.
			HEAT TREAT. SPEC.	
			FINISH & SPEC. NO.	
			CHECKED	FINAL APPROVAL
				PX-102

ISSUE	ITEM	CHANGED FROM	DATE	CN. NO.	DRAFTS	CHECKER	ENG. APP.
		REDRAWN - NO CHANGE	2/12/54		CIPD.	JAD	WSE

TOLERANCES

SCALE

ALL OTHERS  
DEC. DIM. ±  
FRAC. DIM. ± 1/64  
ANGULAR DIM. ±

DRILL, PUNCH, COMMERCIAL STOCK SIZES AND MANUFACTURERS TOLERANCES ARE NOT INCLUDED.

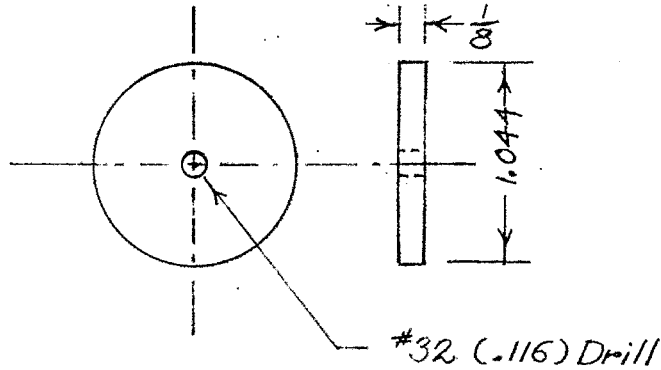
IF IT IS FOUND DESIRABLE TO CHANGE ANY TOLERANCE OR OTHER DETAIL SPECIFIED ON THIS DRAWING NOTIFY THE PURCHASER PROMPTLY.

PX-106

MAXIMUM ALLOWABLE TOLERANCES HAVE BEEN DETERMINED AND DEVIATIONS WILL BE CAUSE FOR REJECTION. REMOVE ALL BURRS AND SHARP EDGES

USED ON

MODEL	PROJECT NO.	ASS'Y. NO.	DATE
T.A. 106	154	A-133	9/4/52



REQ.	ITEM	PART NO.	DESCRIPTION	SYMBOL
			THE TECHNICAL MATERIEL CORP. MAMARONECK, NEW YORK	
		Reel of Sheet	WASHER	
		STOCK SIZE		
		Tested		
		MATERIAL	WEIGHT PER PC.	
		TYPE & TEMPER		
		HEAT TREAT. SPEC.		
		FINISH & SPEC. NO.		

ISSUE	ITEM	CHANGED FROM	DATE	CN. NO.	DRAFTS	CHECKER	ENG. APP.
ALL OTHERS		DEC. DIM. $\pm .005$ FRAC. DIM. $\pm \frac{1}{64}$ ANGULAR DIM. $\pm$					
TOLERANCES				SCALE			
				DRILL, PUNCH, COMMERCIAL STOCK SIZES AND MANUFACTURERS TOLERANCES ARE NOT INCLUDED.			

DRAWN: *[Signature]*  
 CHECKED: *[Signature]*  
 ELEC. DES. APP.: *[Signature]*  
 MECH. DES. APP.: *[Signature]*  
 FINAL APPROVAL: *[Signature]*  
 PX-106

IF IT IS FOUND DESIRABLE TO CHANGE ANY TOLERANCE OR OTHER DETAIL SPECIFIED ON THIS DRAWING NOTIFY THE PURCHASER PROMPTLY.

RELEASED

PX-107 B

MAXIMUM ALLOWABLE TOLERANCES HAVE BEEN DETERMINED AND DEVIATIONS WILL BE CAUSE FOR REJECTION. REMOVE ALL BURRS AND SHARP EDGES

Req. Per. UNIT

USED ON

MODEL

PROJECT NO.

ASS'Y. NO.

DATE

LFA

109

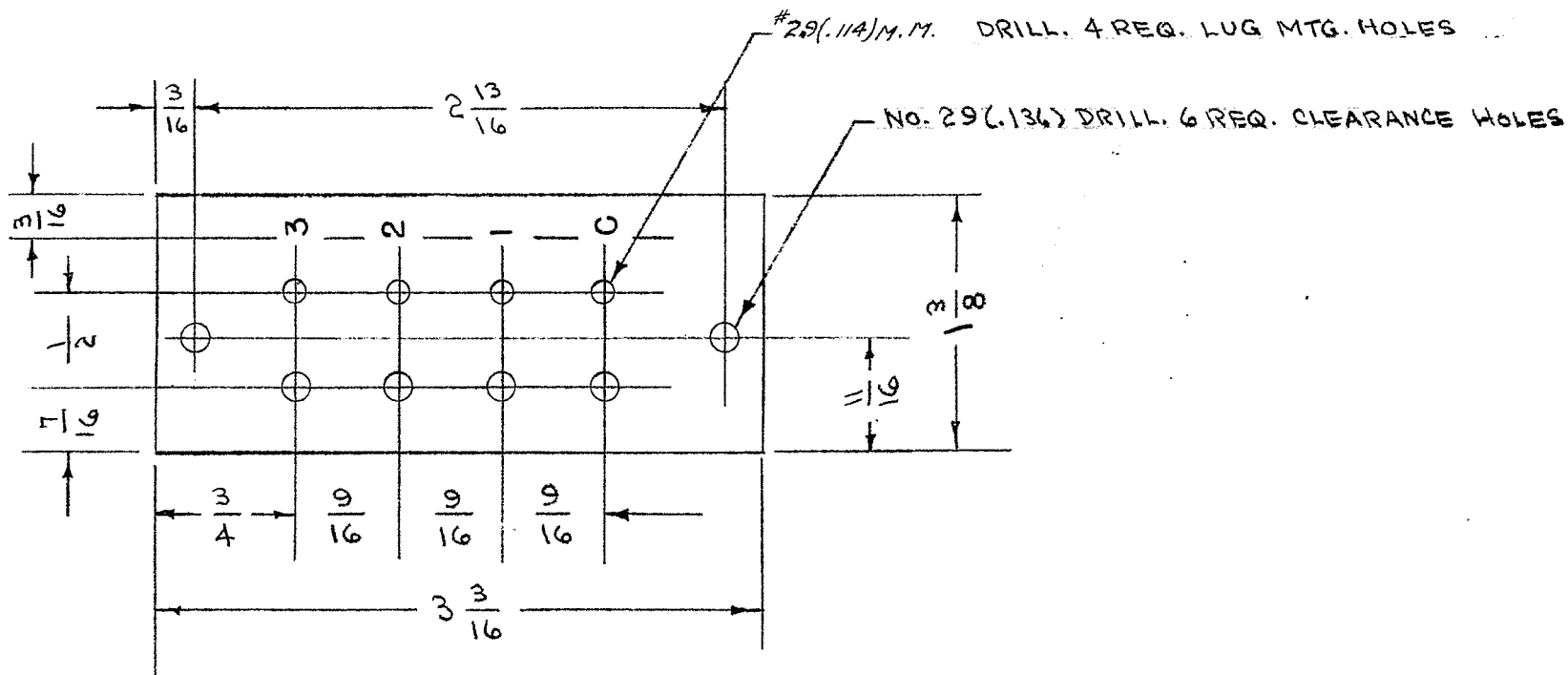
A-144

9-16-52

1

XFK

NOTE.: NUMERALS TO BE 1/8" HIGH GOTHIC, WHITE. APPLY S-113 (FUNGUS RESISTANT VARNISH) OVER SCREENING BEFORE LUGS ARE STAKED.



REQ.	ITEM	PART NO.	DESCRIPTION	SYMBOL
		1/8 THK.	THE TECHNICAL MATERIEL CORP.	
		STOCK SIZE	MAMARONECK, NEW YORK	
		PHENOLIC	BOARD TERMINAL,	
		MATERIAL	XTAL OVEN	
		WEIGHT PER PC.	C.D.D. 9-11-52	
		XXXXP LAMINATE	A. J. J.	
		TYPE & TEMPER	DRAWN	
			ELEC. DES. APP.	
			MECH. DES. APP.	
			WDC 10-25	
		HEAT TREAT. SPEC.	CHECKED	
		SEE NOTE.	FINAL APPROVAL	
		FINISH & SPEC. NO.	SUPERCEDES	
			AMS-104	
			PX-107	
			B	

ISSUE	ITEM	CHANGED FROM	DATE	CN. NO.	DRAFTS	CHECKER	ENG. APP.
B	1	29(.114) M.M. WAS #32	3-7-52	2	JAC	JAC	
	3	1/16 WAS 5/8					
A	2	3/16 WAS 1/4					
	1	1/16 WAS 3/8					

TOLERANCES

SCALE FULL

ALL OTHERS

DEC. DIM.  $\pm$   
 FRAC. DIM.  $\pm$  1/64  
 ANGULAR DIM.  $\pm$

DRILL, PUNCH, COMMERCIAL STOCK SIZES AND MANUFACTURERS TOLERANCES ARE NOT INCLUDED.

IF IT IS FOUND DESIRABLE TO CHANGE ANY TOLERANCE OR OTHER DETAIL SPECIFIED ON THIS DRAWING NOTIFY THE PURCHASER PROMPTLY.

RELEASED

PX-108 B

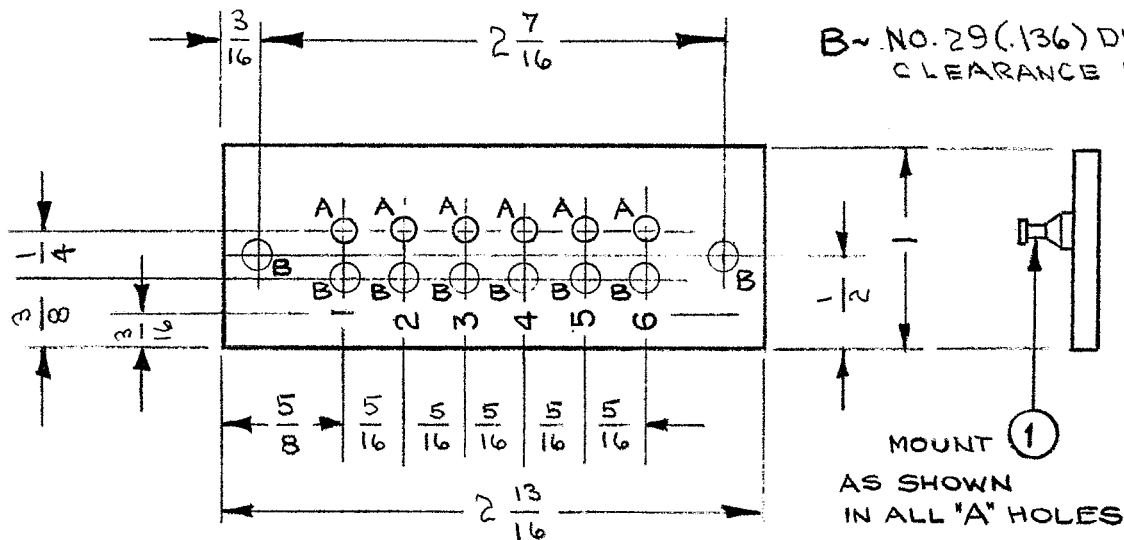
MAXIMUM ALLOWABLE TOLERANCES HAVE BEEN DETERMINED AND DEVIATIONS WILL BE CAUSE FOR REJECTION. REMOVE ALL BURRS AND SHARP EDGES

AMT PER UNIT	USED ON			
	MODEL	PROJECT NO.	ASS'Y. NO.	DATE
	LFA	109	A-146	9-20-57
2	XFK		A-146	

LETTERS TO BE 1/8 HIGH WHITE. APPLY S-113 (FUNGUS RESISTANT VARNISH) OVER SCREENING BEFORE LUGS ARE STAMPED.

A ~ NO. 29 (.114) M.M. DRILL 6 REQ.  
LUG MOUNTING HOLES

B ~ NO. 29 (.136) DRILL 8 REQ.  
CLEARANCE HOLES



REQ.	ITEM	PART NO.	DESCRIPTION	SYMBOL
6	1	TE 105-4	TERMINAL, STUD	A
1/8 THK.			THE TECHNICAL MATERIEL CORP. MAMARONECK, NEW YORK	
PHENOLIC			BOARD, TERMINAL - ELEMENT	
XXXXP LAMINATE			C.D.D. 9-12-57	
MATERIAL			DRAWN	
WEIGHT PER PC.			ELEC. DES. APP.	
TYPE & TEMPER			MECH. DES. APP.	
HEAT TREAT. SPEC.			CHECKED	
FINISH & SPEC. NO.			FINAL APPROVAL	
SEE NOTE			SUPERCEDES	
			AMS-098	

ISSUE	ITEM	CHANGED FROM	DATE	CN. NO.	DRAFTS	CHECKER	ENG. APP.
B	1	IT. 1 ADDED, HOLES MARKED 'A' & 'B'	11.3.64	12834	1/28	J. J. J.	
A	1	NO. 29 (.114) WAS #32	8-25-57			J. J. J.	

TOLERANCES		SCALE
ALL OTHERS	DEC. DIM. ± FRAC. DIM. ± 1/64 ANGULAR DIM. ±	FULL
DRILL, PUNCH, COMMERCIAL STOCK SIZES AND MANUFACTURERS TOLERANCES ARE NOT INCLUDED.		

W.D. 10-25  
A. J. J.  
PX-108 B

IF IT IS FOUND DESIRABLE TO CHANGE ANY TOLERANCE OR OTHER DETAIL SPECIFIED ON THIS DRAWING NOTIFY THE PURCHASER PROMPTLY.

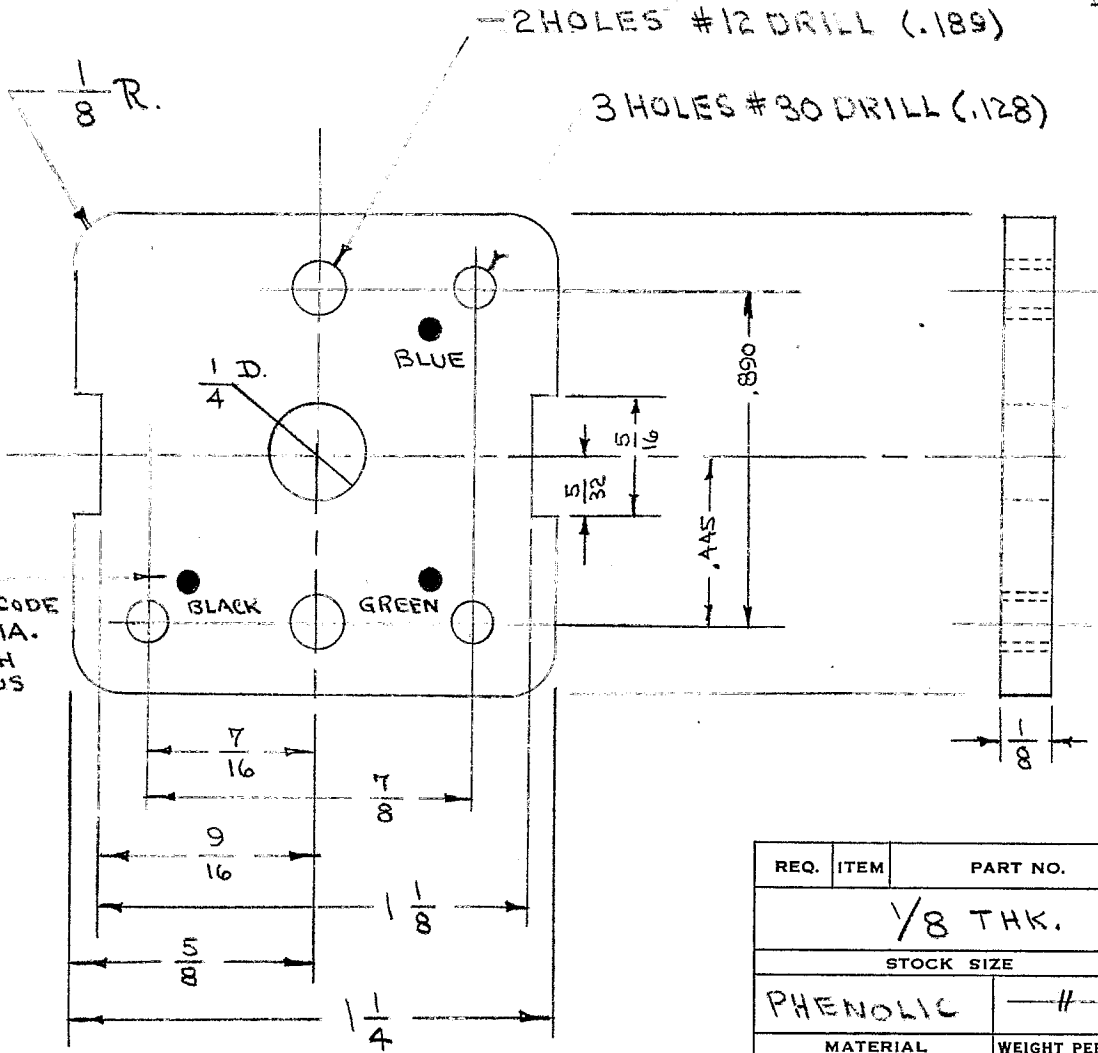
**RELEASED**

PX-109

MAXIMUM ALLOWABLE TOLERANCES HAVE BEEN DETERMINED AND DEVIATIONS WILL BE CAUSE FOR REJECTION. REMOVE ALL BURRS AND SHARP EDGES

USED ON

MODEL	PROJECT NO.	ASSY. NO.	DATE
LFA	109	A-208	10-23-52



COLOR DOT CODE APPROX. 1/8 DIA. COVER WITH S-113 FUNGUS RESISTANT VARNISH

REQ.	ITEM	PART NO.	DESCRIPTION	SYMBOL
		1/8 THK.	THE TECHNICAL MATERIEL CORP.	
		STOCK SIZE	MAMARONECK. NEW YORK	
		PHENOLIC	BOARD, MOUNTING	
		MATERIAL	FILTER	
		XXXP LAMINATE		
		TYPE & TEMPER	C.O.D. 9-19-52	
			DRAWN	
			ELEC. DES. APP.	
			MECH. DES. APP.	
			HEAT TREAT. SPEC.	
			FINISH & SPEC. NO.	
			CHECKED	
			FINAL APPROVAL	
			PX-109	

ISSUE	ITEM	CHANGED FROM	DATE	CN. NO.	DRAFTS	CHECKER	ENG. APP.
ALL OTHERS		DEC. DIM. ± .005 FRAC. DIM. ± 1/64 ANGULAR DIM. ±					

SCALE TWICE SIZE

DRILL, PUNCH, COMMERCIAL STOCK SIZES AND MANUFACTURERS TOLERANCES ARE NOT INCLUDED.



**RELEASED STANDARD DRAWING**

PX-114

C

IF IT IS FOUND DESIRABLE TO CHANGE ANY TOLERANCE OR OTHER DETAIL SPECIFIED ON THIS DRAWING NOTIFY THE PURCHASER PROMPTLY.

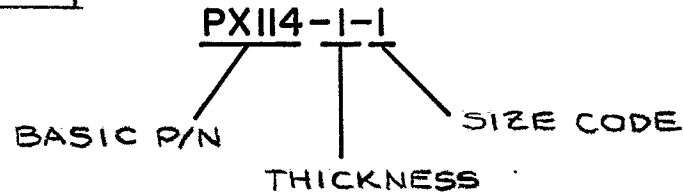
MAXIMUM ALLOWABLE TOLERANCES HAVE BEEN DETERMINED AND DEVIATIONS WILL BE CAUSE FOR REJECTION. REMOVE ALL BURRS AND SHARP EDGES

USED ON

MODEL	PROJECT NO.	ASS'Y. NO.	DATE
-------	-------------	------------	------

TMC No.	THICKNESS	SIZE CODE
PX-114-1	0.040 Inch.	1 7 11/32 x 23/32
PX-114-2	0.060	2 1/4 x 3/4
PX-114-3	0.080	
PX-114-4	0.100	
PX-114-5	0.125	

NOTE:  
USE SIZE CODE FOR SPECIFIC SIZES ONLY



REQ.	ITEM	PART NO.	DESCRIPTION	SYMBOL										
SHEET			THE TECHNICAL MATERIEL CORP.											
STOCK SIZE			MAMARONECK, NEW YORK											
C		ADD # 2 TO SIZE CODE 1/11/70 20057 GE	PLEXEGLASS	PLEXEGLASS, SHEET, CLEAR										
B	1	TMC NO. (1) SIZE WAS 7 11/16 x 23/32 3.23.65 13680	MATERIAL	WEIGHT PER PC.										
A	2	P/N DESC. & NOTE ADD. SIZE CODE CHART ADD 10.13.64 12645												
ISSUE	ITEM	CHANGED FROM	DATE	CN. NO.	DRAFTS	CHECKER	ENG. APP.	TYPE & TEMPER	DRAWN	ELEC. DES. APP.	MECH. DES. APP.			
TOLERANCES			SCALE			HEAT TREAT. SPEC.			CHECKED			FINAL APPROVAL		
ALL OTHERS			DEC. DIM. ± FRAC. DIM. ± ANGULAR DIM. ±			DRILL, PUNCH, COMMERCIAL STOCK SIZES AND MANUFACTURERS TOLERANCES ARE NOT INCLUDED.			CLEAR			FINISH & SPEC. NO.		

PX-114

C



IF IT IS FOUND DESIRABLE TO CHANGE ANY TOLERANCE OR OTHER DETAIL SPECIFIED ON THIS DRAWING NOTIFY THE PURCHASER PROMPTLY.

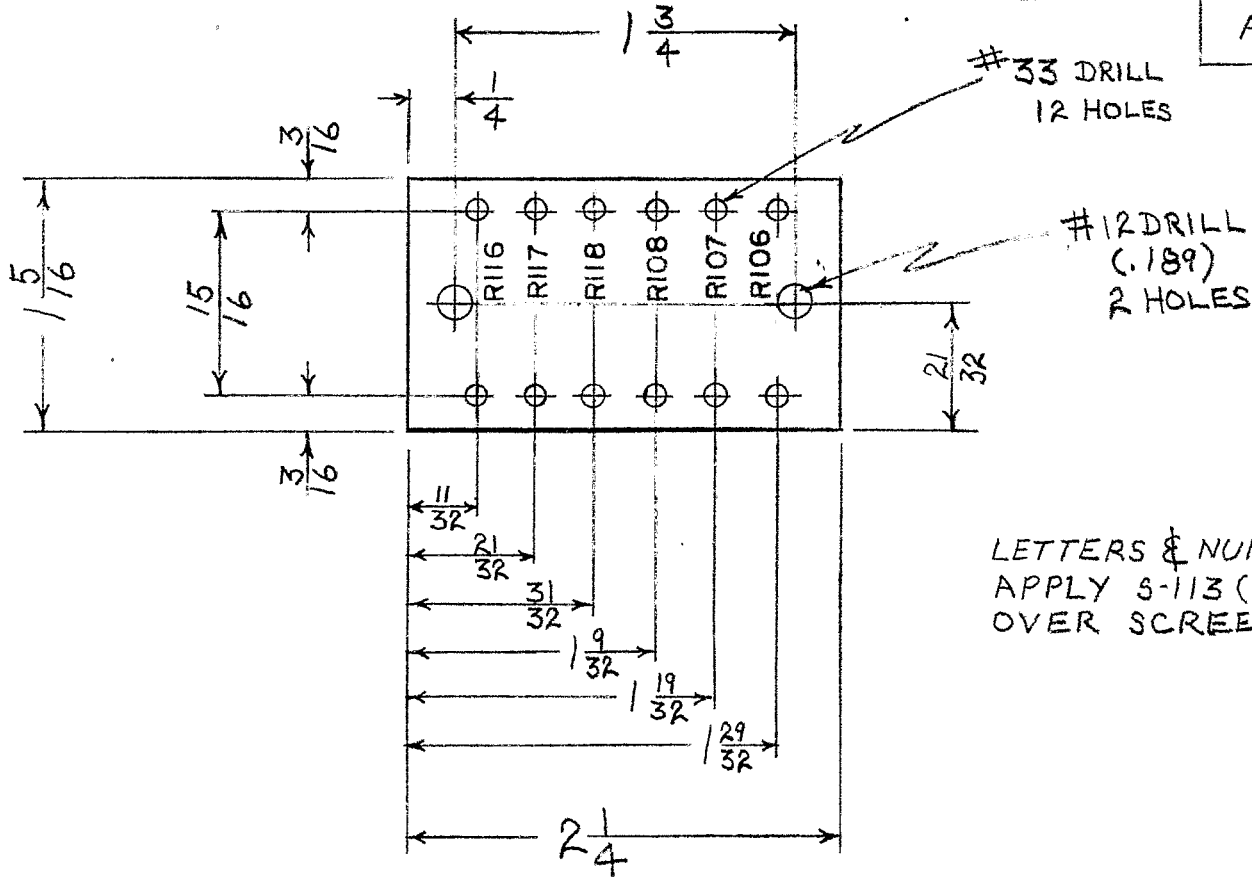
RELEASED

PX-118

MAXIMUM ALLOWABLE TOLERANCES HAVE BEEN DETERMINED AND DEVIATIONS WILL BE CAUSE FOR REJECTION. REMOVE ALL BURRS AND SHARP EDGES

USED ON

MODEL	PROJECT NO.	ASS'Y. NO.	DATE
AMD-1	144	207	10-9-52



NOTE:  
LETTERS & NUMBERS TO BE  $\frac{3}{32}$  HIGH, WHITE.  
APPLY S-113 (FUNGUS RESISTANT VARNISH)  
OVER SCREENING BEFORE LUGS ARE STAKED.

REQ.	ITEM	PART NO.	DESCRIPTION	SYMBOL
		$\frac{1}{8}$ (.125) THICK	THE TECHNICAL MATERIEL CORP. MAMARONECK, NEW YORK	
		STOCK SIZE		
		PHENOLIC	TERMINAL BOARD	
		MATERIAL		
		XXYP LAMINATED		
		TYPE & TEMPER	WDC 10/9/52	G.T.O
			DRAWN	ELEC. DES. APP.
		HEAT TREAT. SPEC.		MECH. DES. APP.
		FINISH & SPEC. NO.	CHECKED	FINAL APPROVAL
		SEE NOTE		PX-118

ISSUE	ITEM	CHANGED FROM	DATE	CN. NO.	DRAFTS	CHECKER	ENG. APP.
TOLERANCES			SCALE FULL				
ALL OTHERS	DEC. DIM. $\pm$ FRAC. DIM. $\pm \frac{1}{64}$ ANGULAR DIM. $\pm$		DRILL, PUNCH, COMMERCIAL STOCK SIZES AND MANUFACTURERS TOLERANCES ARE NOT INCLUDED.				

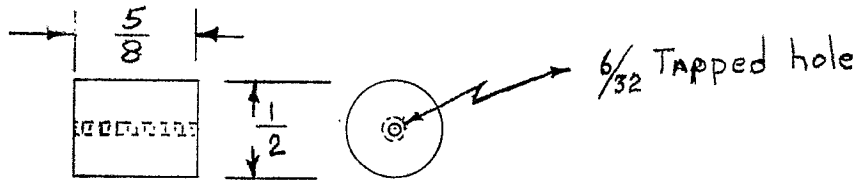
IF IT IS FOUND DESIRABLE TO CHANGE ANY TOLERANCE OR OTHER DETAIL SPECIFIED ON THIS DRAWING NOTIFY THE PURCHASER PROMPTLY.

PX-121 B

MAXIMUM ALLOWABLE TOLERANCES HAVE BEEN DETERMINED AND DEVIATIONS WILL BE CAUSE FOR REJECTION. REMOVE ALL BURRS AND SHARP EDGES

USED ON

MODEL	PROJECT NO.	ASS'Y. NO.	DATE
TR020		A-159	
TR002		A-453	

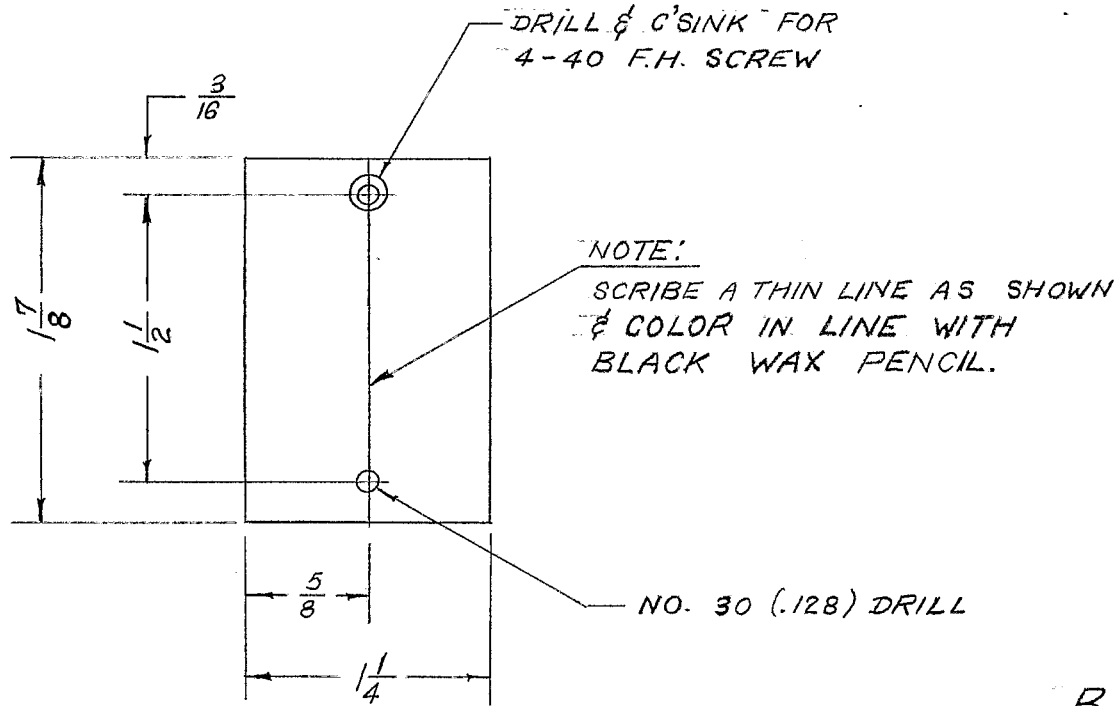


REQ.	ITEM	PART NO.	DESCRIPTION	SYMBOL
		1/2 Rod	THE TECHNICAL MATERIEL CORP. MAMARONECK, NEW YORK	
		STOCK SIZE		
		Phenolic	SPACER	
		MATERIAL	WEIGHT PER PC.	
		TYPE & TEMPER	H/T 1/20/53 G.T.O	
			DRAWN	ELEC. DES. APP. MECH. DES. APP.
		HEAT TREAT. SPEC.	CHECKED	FINAL APPROVAL
		FINISH & SPEC. NO.		PX-121 B

ISSUE	ITEM	CHANGED FROM	DATE	CN. NO.	DRAFTS	CHECKER	ENG. APP.
B	1	5/8 WAS 3/8	12/16/53	2	16	JAS	W.C.
A	1	3/8 WAS 1/2	4/30/52	1	C.D.D.	OM	OM

TOLERANCES		SCALE
ALL OTHERS	DEC. DIM. ± FRAC. DIM. ± ANGULAR DIM. ±	1/16
DRILL, PUNCH, COMMERCIAL STOCK SIZES AND MANUFACTURERS TOLERANCES ARE NOT INCLUDED.		

REQ. PER UNIT	USED ON			PX-123
	MODEL	ASS'Y. NO.	DATE	
2	XFK	A-685	7-11-51	



BLANK SIZE  
 $1\frac{1}{4} \times 1\frac{7}{8}$

ISSUE	ITEM	CHANGED FROM	DATE	CH. NO.	DRAFTS	CHECKER	ENG. APP.	REQ. ITEM	PART NO.	DESCRIPTION	SYMBOL	
								.062		THE TECHNICAL MATERIEL CORP.		
								STOCK SIZE		MAMARONECK, NEW YORK		
#	#	REDRAWN NO CHANGE	9-22-51	1	P3	JAG	WPK	PLEXIGLASS		FRONT DIAL FIDUCIARY		
								MATERIAL		XFK		
TOLERANCES				SCALE:						B-927-55	WPK	
DEC. DIM. ±				MAXIMUM ALLOWABLE TOLERANCES HAVE BEEN DETERMINED AND ANY DEVIATIONS WILL BE CAUSE FOR REJECTION. REMOVE ALL BURRS AND SHARP EDGES				TYPE & TEMPER	HEAT TREAT. SPEC.	DRAWN	CHECKED	FINAL APPROVAL
FRAC. DIM. ±												
ANGULAR DIM. ±								FINISH & SPEC. NO.	ELEC. DES. APP.	MECH. DES. APP.	PX-123	

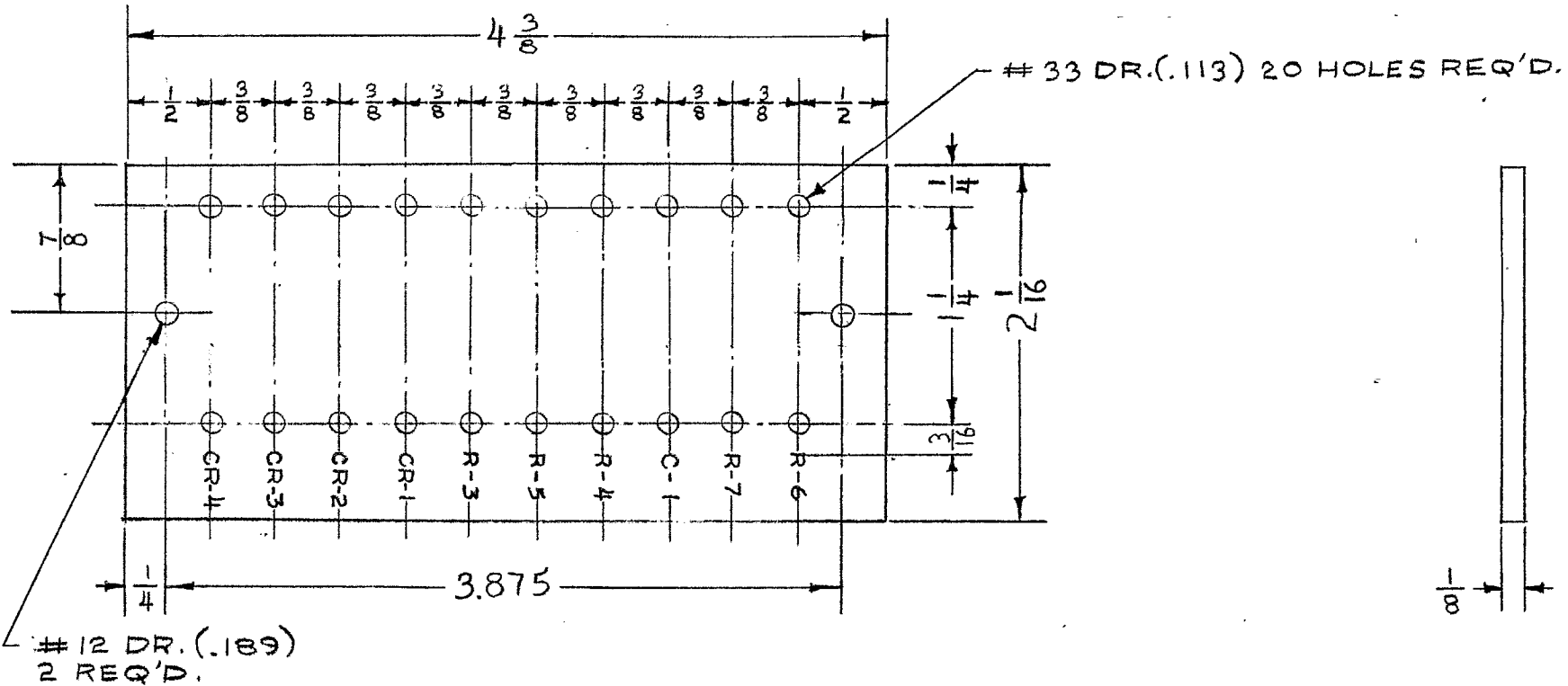
IF IT IS FOUND DESIRABLE TO CHANGE ANY TOLERANCE OR OTHER DETAIL SPECIFIED ON THIS DRAWING NOTIFY THE PURCHASER PROMPTLY.

PX-155

MAXIMUM ALLOWABLE TOLERANCES HAVE BEEN DETERMINED AND DEVIATIONS WILL BE CAUSE FOR REJECTION. REMOVE ALL BURRS AND SHARP EDGES

USED ON

MODEL	PROJECT NO.	ASS'Y. NO.	DATE
XFD-1	160	A-3200	12-10-52



ALL LETTERING TO BE  $\frac{3}{32}$  HIGH.

REQ.	ITEM	PART NO.	DESCRIPTION	SYMBOL
		$2\frac{1}{16} \times 4\frac{3}{8} \times \frac{1}{8}$	THE TECHNICAL MATERIEL CORP. MAMARONECK, NEW YORK	
		STOCK SIZE		
		BAKELITE	TERMINAL BOARD	
		MATERIAL		
		WEIGHT PER PC.		
		XXXX LAMINATE		
		TYPE & TEMPER	16 12-10-52	
			DRAWN	ELEC. DES. APP. MECH. DES. APP.
			CWD	PJB
			CHECKED	FINAL APPROVAL
		HEAT TREAT. SPEC.		
		S-113 FUNGUS RESISTANT VARNISH	SUPERCEDES AMS-117	PX-155
		FINISH & SPEC. NO.		

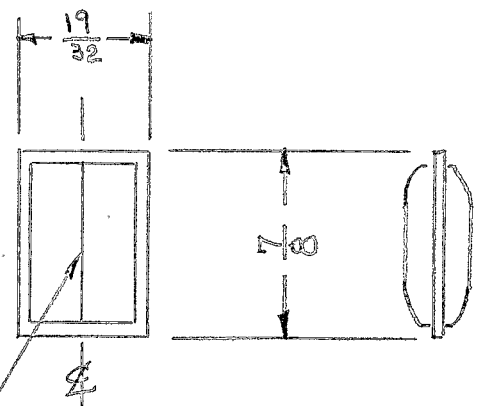
ISSUE	ITEM	CHANGED FROM	DATE	CN. NO.	DRAFTS	CHECKER	ENG. APP.
TOLERANCES			SCALE FULL SIZE				
ALL OTHERS	DEC. DIM. $\pm .005$	DRILL, PUNCH, COMMERCIAL STOCK SIZES AND MANUFACTURERS TOLERANCES ARE NOT INCLUDED.					
	FRAC. DIM. $\pm \frac{1}{64}$						
	ANGULAR DIM. $\pm$						

IF IT IS FOUND DESIRABLE TO CHANGE ANY TOLERANCE OR OTHER DETAIL SPECIFIED ON THIS DRAWING NOTIFY THE PURCHASER PROMPTLY.

PX-156 A

MAXIMUM ALLOWABLE TOLERANCES HAVE BEEN DETERMINED AND DEVIATIONS WILL BE CAUSE FOR REJECTION. REMOVE ALL BURRS AND SHARP EDGES

REQ. PER UNIT	USED ON			
	MODEL	PROJECT NO.	ASS'Y. NO.	DATE
1	VOX		A-631	11/27/54



USE TIG TO SCRIBE LINE  
APPROX. .005 THICK, COLOR  
WITH RED CRAYON.

REF: ANSCO # C-74-89 (TMC MODIFIED PX-113)

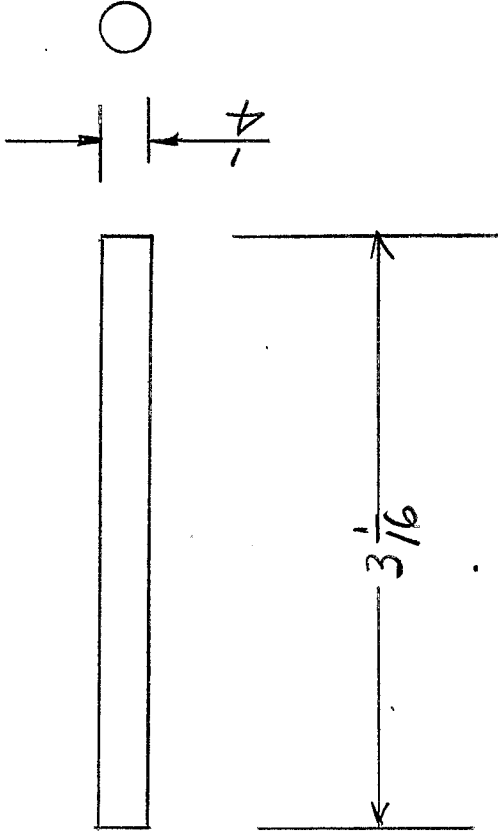
REQ.	ITEM	PART NO.	DESCRIPTION	SYMBOL
			THE TECHNICAL MATERIEL CORP.	
			MAMARONECK, NEW YORK	
			FIDUCIARY SCRIBE LINE	
			MODEL VOX	
			TYPE & TEMPER	
			DRAWN	MECH. DES. APP.
			CHECKED	FINAL APPROVAL
			HEAT TREAT. SPEC.	
			FINISH & SPEC. NO.	

ISSUE	ITEM	CHANGED FROM	DATE	CN. NO.	DRAFTS	CHECKER	ENG. APP.
		REDRAWN - NO REVISION	11/27/54	1	ASD		WJR

ALL OTHERS	DEC. DIM. ± FRAC. DIM. ± ANGULAR DIM. ±	SCALE	DRILL, PUNCH, COMMERCIAL STOCK SIZES AND MANUFACTURERS TOLERANCES ARE NOT INCLUDED.
------------	---	-------	---

PX-156 A

PX-157



USED ON A-427

SUPERCEDES  
AMS 374

Req'd : one per unit  
Mat : Grade XXX Lamitex -  $\frac{1}{4}$  D x  $3\frac{1}{16}$  Long

DATE 5/22/52

DRN. P.B.

CHKD. *PJB*

APPD. *PJB*

COIL SLUG  
BUSHING SHAFT

MODEL VOX

THE TECHNICAL MATERIEL  
CORPORATION  
MAMARONECK, NEW YORK

SHEET

OF

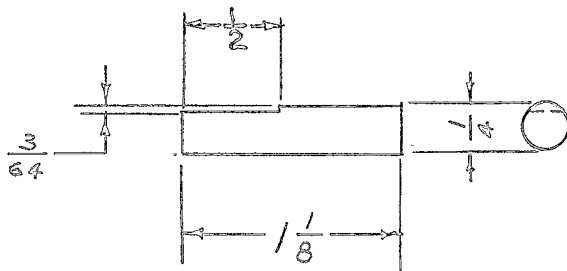
NO. PX-157

IF IT IS FOUND DESIRABLE TO CHANGE ANY TOLERANCE OR OTHER DETAIL SPECIFIED ON THIS DRAWING NOTIFY THE PURCHASER PROMPTLY.

PX-158 B

MAXIMUM ALLOWABLE TOLERANCES HAVE BEEN DETERMINED AND DEVIATIONS WILL BE CAUSE FOR REJECTION. REMOVE ALL BURRS AND SHARP EDGES

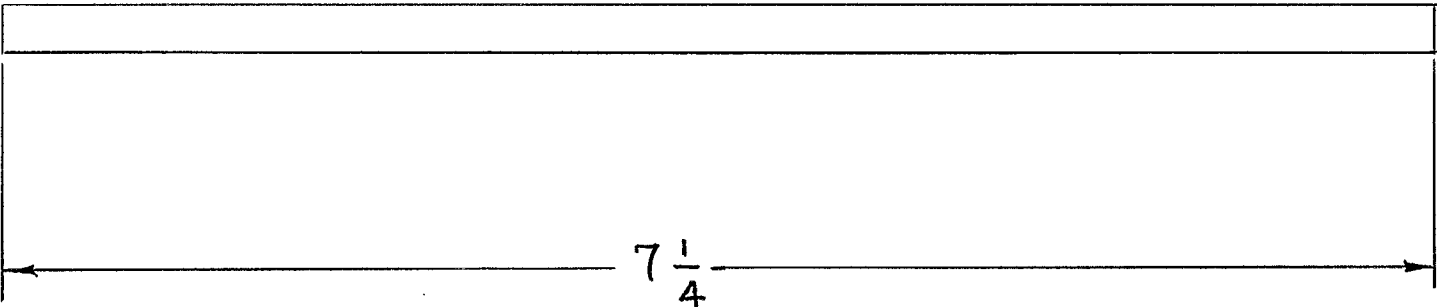
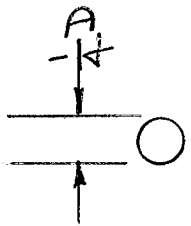
REQ. PER UNIT	USED ON			
	MODEL	PROJECT NO.	ASS'Y. NO.	DATE
1	VOX		A-585	2-9-55
1	VOX-1-2			2-9-55



REQ.	ITEM	PART NO.	DESCRIPTION	SYMBOL
		$\frac{1}{4}$ ROD	THE TECHNICAL MATERIEL CORP.	
		STOCK SIZE	MAMARONECK. NEW YORK	
	LAMITEX	#	MOTOR DRIVE	
	MATERIAL	WEIGHT PER PC.	EXTENSION SHAFT	
		GRADE XXX		
		TYPE & TEMPER	P.B. 2-9-55	
			DRAWN	ELEC. DES. APP. MECH. DES. APP.
		HEAT TREAT. SPEC.	JA	
		BLACK	✓ CHECKED	FINAL APPROVAL
		FINISH & SPEC. NO.		PX-158 B

+	+	REDRAWN - N.C.	2-9-55	#	P.B.	JAL	WDC
ISSUE	ITEM	CHANGED FROM	DATE	CN. NO.	DRAFTS	CHECKER	ENG. APP.

TOLERANCES		SCALE
ALL OTHERS	DEC. DIM. $\pm$ FRAC. DIM. $\pm$ $\frac{1}{64}$ ANGULAR DIM. $\pm$	DRILL, PUNCH, COMMERCIAL STOCK SIZES AND MANUFACTURERS TOLERANCES ARE NOT INCLUDED.



USED ON A-1085  
 SUPERCEDES  
 AMS 361

Required: One Per Unit  
 Material: Grade XXX Lowitex-1/4 Dia. x 7 1/4 long

DATE 5-7-52	OSCILLATOR	CONDENSER EXT. SHAFT	Model VOX	THE TECHNICAL MATERIEL CORPORATION MAMARONECK, NEW YORK
DRN. JAD				
CHKD. <i>[Signature]</i>				
APPD. <i>[Signature]</i>				
SHEET	OF	NO. PX-159		

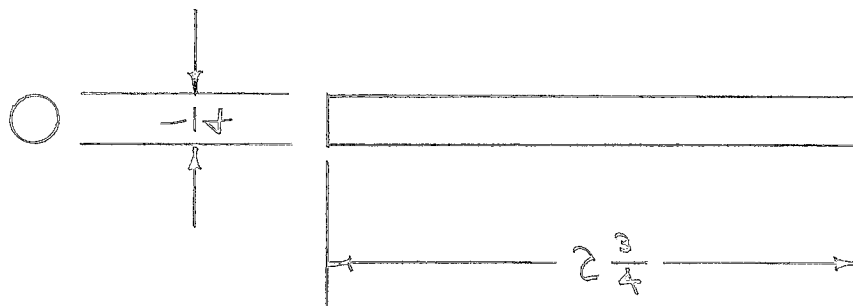


IF IT IS FOUND DESIRABLE TO CHANGE ANY TOLERANCE OR OTHER DETAIL SPECIFIED ON THIS DRAWING NOTIFY THE PURCHASER PROMPTLY.

PX-160 A

MAXIMUM ALLOWABLE TOLERANCES HAVE BEEN DETERMINED AND DEVIATIONS WILL BE CAUSE FOR REJECTION. REMOVE ALL BURRS AND SHARP EDGES

REQ. PER UNIT	USED ON			
	MODEL	PROJECT NO.	ASS'Y. NO.	DATE
1	VOX		A-585	1-21-55
1	VOX-1 VOX-2			2-3-55



REQ.	ITEM	PART NO.	DESCRIPTION	SYMBOL
		1/4" DIA X 2 3/4"	THE TECHNICAL MATERIEL CORP. MAMARONECK, NEW YORK	
		EPOXY	EXT. SHAFT & COIL SLUG	
		G-11		
			C.D.D. 1-21-55	
			DRAWN	ELEC. DES. APP. MECH. DES. APP.
			CHECKED	FINAL APPROVAL
				PX-160 A

ISSUE	ITEM	CHANGED FROM	DATE	CN. NO.	DRAFTS	CHECKER	ENG. APP.
A	1	EPOXY G-11 WAS PHENOLIC XXX LAMITEX	8-11-60	2514	RL	W	W
-	-	REDRAWN, NO CHANGE	7-21-55	-	W	W	W

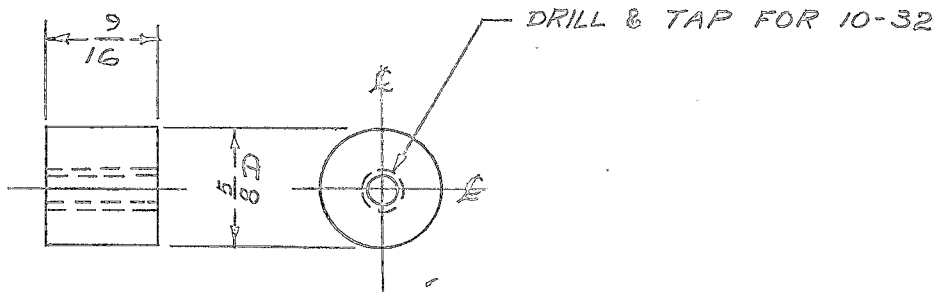
TOLERANCES		SCALE
ALL OTHERS	DEC. DIM. ± FRAC. DIM. ± 1/32 ANGULAR DIM. ±	DRILL, PUNCH, COMMERCIAL STOCK SIZES AND MANUFACTURERS TOLERANCES ARE NOT INCLUDED.

IF IT IS FOUND DESIRABLE TO CHANGE ANY TOLERANCE OR OTHER DETAIL SPECIFIED ON THIS DRAWING NOTIFY THE PURCHASER PROMPTLY.

PX-162 B

MAXIMUM ALLOWABLE TOLERANCES HAVE BEEN DETERMINED AND DEVIATIONS WILL BE CAUSE FOR REJECTION. REMOVE ALL BURRS AND SHARP EDGES

REQ. PER UNIT	USED ON			
	MODEL	PROJECT NO.	ASS'Y. NO.	DATE
8	PMO-1 PMO-2	285		1-19-55
8	VOX	101		1-19-55
8	VOX-1 VOX-2	291		1-19-55
8	RTF			2-1-56
8	RTF-2			11-10-56



REF: FRANKLIN FIBRE CO.

REQ.	ITEM	PART NO.	DESCRIPTION	SYMBOL
		5/8 D.	THE TECHNICAL MATERIEL CORP. MAMARONECK. NEW YORK	
		STOCK SIZE		
		PHENOLIC	INNER & OUTER SHELL SPACERS (OVEN ASSY.)	
		MATERIAL		
		XXX	P.B. 1-19-55	
		TYPE & TEMPER	DRAWN	ELEC. DES. APP. MECH. DES. APP.
		HEAT TREAT. SPEC.	CHECKED	FINAL APPROVAL
		NATURAL		PX-162 B
		FINISH & SPEC. NO.		

ISSUE	ITEM	CHANGED FROM	DATE	CN. NO.	DRAFTS	CHECKER	ENG. APP.
B	1	MAT. WAS KKK LAMITEK	10/10/56	2	JAK	CCC	
A	2	TYPE & TEM. WAS PBE	2-25-55	1	P.B.	JAK	
	1	REDRAWN-REF. ADDED					

TOLERANCES

SCALE

ALL OTHERS

DEC. DIM. ±  
FRAC. DIM. ± 1/64  
ANGULAR DIM. ±

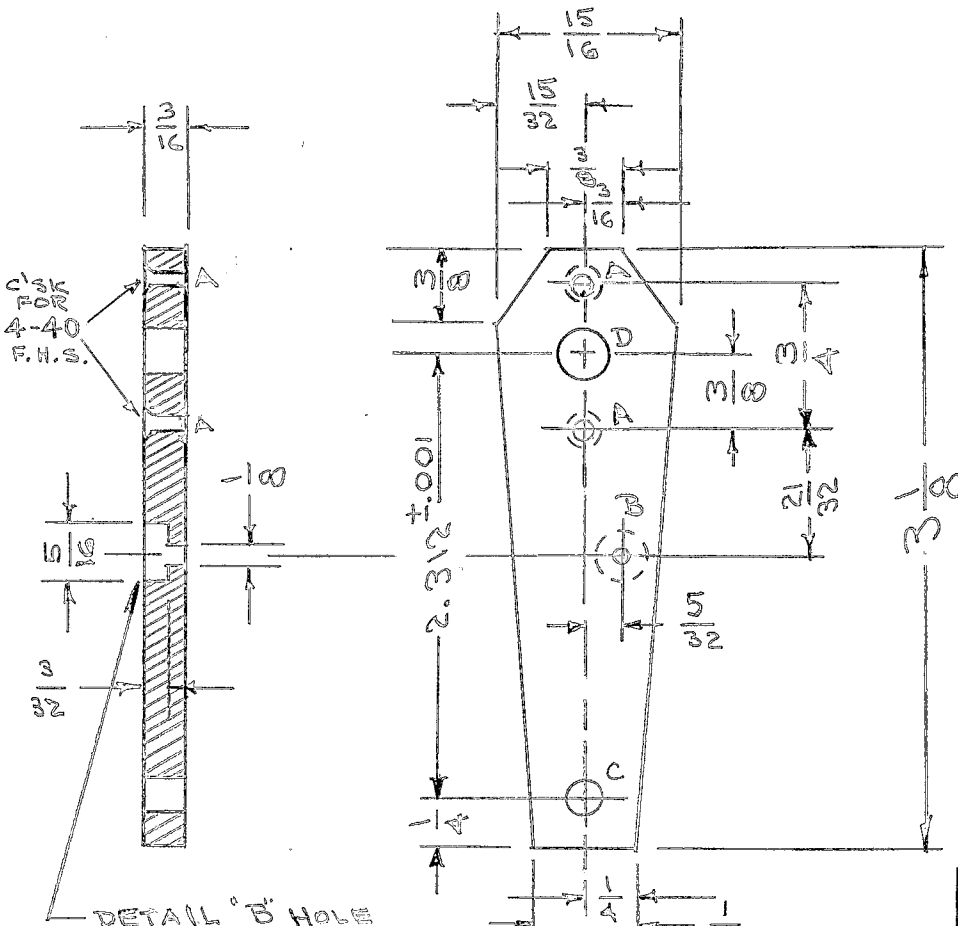
DRILL, PUNCH, COMMERCIAL STOCK SIZES AND MANUFACTURERS TOLERANCES ARE NOT INCLUDED.

IF IT IS FOUND DESIRABLE TO CHANGE ANY TOLERANCE OR OTHER DETAIL SPECIFIED ON THIS DRAWING NOTIFY THE PURCHASER PROMPTLY.

PX-165 H

MAXIMUM ALLOWABLE TOLERANCES HAVE BEEN DETERMINED AND DEVIATIONS WILL BE CAUSE FOR REJECTION. REMOVE ALL BURRS AND SHARP EDGES

REQ. PER UNIT	USED ON			
	MODEL	PROJECT NO.	ASS'Y. NO.	DATE
1	VOX		A-583	12/16/54
1	PMO-1	285	"	"
1	PMO-2	285	"	"
1	VOX-1	291		1/17/55
1	VOX-2	291		1/17/55
1	RTP			2-1-56
1	RTP-2			11-10-58



- A-DRILL & C'SINK FOR 4-40 F.H.S. - 2 HOLES REQ.
- B- SEE DETAIL -
- C- NO. 11 (191) D. -
- D- .252 ± .0015

ISSUE	ITEM	CHANGED FROM	DATE	CN. NO.	DRAFTS	CHECKER	ENG. APP.
H	1	'A' HOLE WAS 3-48 F.H.S.	10/23/54	12664	1/58	@	
G	2	'D' HOLE WAS 17/64 D.	7/27/50	2662	cy	file	
F	1	'A' HOLE - WAS 3-48					
E	1	17/64 D WAS 1/4 D	1/2/53				
D	2	4-40 C/SINK HOLE CLARIFIED	8/27/55	5			
C	1	3/8 DIM. ADDED	1/13/55	4			
		B HOLE DETAIL ADDED	7/6/54	3			

REQ.	ITEM	PART NO.	DESCRIPTION	SYMBOL
		3/16 THK.	THE TECHNICAL MATERIEL CORP.	
		STOCK SIZE	MAMARONECK. NEW YORK	
		PHENOLIC	ARM, CAM FOLLOWER	
		MATERIAL WEIGHT PER PC.	(OVEN ASSY.)	
		XXXX LAMINATE		
		TYPE & TEMPER	CDD. 12/16/54	
		HEAT TREAT. SPEC.	DRAWN	ELEC. DES. APP. MECH. DES. APP.
		NATURAL	CHECKED	FINAL APPROVAL
		FINISH & SPEC. NO.		PX-165 H

TOLERANCES

SCALE

ALL OTHERS  
DEC. DIM. ± .001  
FRAC. DIM. ± 1/64  
ANGULAR DIM. ±

DRILL, PUNCH, COMMERCIAL STOCK  
SIZES AND MANUFACTURERS  
TOLERANCES ARE NOT INCLUDED.

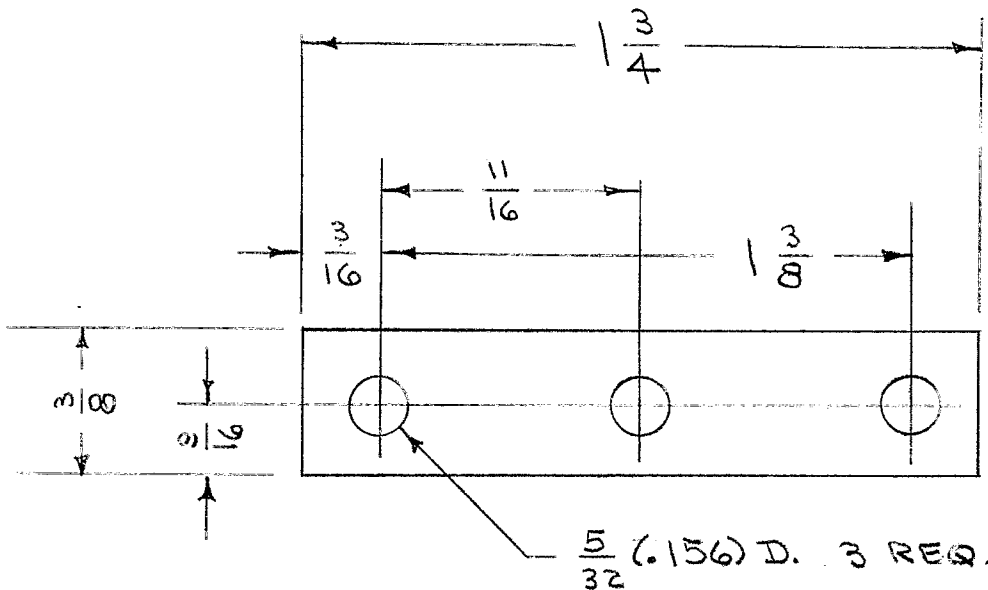
IF IT IS FOUND DESIRABLE TO CHANGE ANY TOLERANCE OR OTHER DETAIL SPECIFIED ON THIS DRAWING NOTIFY THE PURCHASER PROMPTLY.

PX-178

MAXIMUM ALLOWABLE TOLERANCES HAVE BEEN DETERMINED AND DEVIATIONS WILL BE CAUSE FOR REJECTION. REMOVE ALL BURRS AND SHARP EDGES

USED ON

MODEL	PROJECT NO.	ASS'Y. NO.	DATE
RSC-1	170		9-10-53



REQ.	ITEM	PART NO.	DESCRIPTION	SYMBOL
		.125	THE TECHNICAL MATERIEL CORP. MAMARONECK, NEW YORK	
		STOCK SIZE		
		PHENOLIC	CONDENSER MOUNT	
		MATERIAL		
		WEIGHT PER PC.	RSC-1	
		XXXXP LAMINATE		
		TYPE & TEMPER	ADD 9/10/53	WDE
		HEAT TREAT. SPEC.	DRAWN	ELEC. DES. APP. MECH. DES. APP.
		FINISH & SPEC. NO.	CHECKED	FINAL APPROVAL

ISSUE	ITEM	CHANGED FROM	DATE	CN. NO.	DRAFTS	CHECKER	ENG. APP.
TOLERANCES		SCALE $\frac{1}{16} = 1$					
ALL OTHERS	DEC. DIM. $\pm$ FRAC. DIM. $\pm \frac{1}{64}$ ANGULAR DIM. $\pm$	DRILL, PUNCH, COMMERCIAL STOCK SIZES AND MANUFACTURERS TOLERANCES ARE NOT INCLUDED.					

PX-178

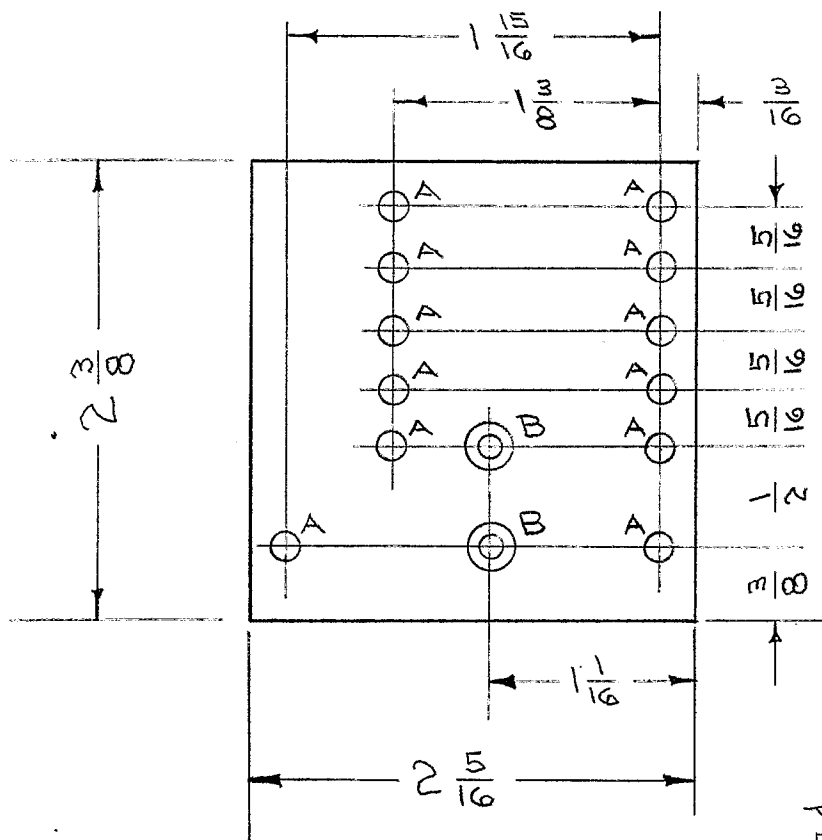
IF IT IS FOUND DESIRABLE TO CHANGE ANY TOLERANCE OR OTHER DETAIL SPECIFIED ON THIS DRAWING NOTIFY THE PURCHASER PROMPTLY.

PX-179

MAXIMUM ALLOWABLE TOLERANCES HAVE BEEN DETERMINED AND DEVIATIONS WILL BE CAUSE FOR REJECTION. REMOVE ALL BURRS AND SHARP EDGES

USED ON

MODEL	PROJECT NO.	ASS'Y. NO.	DATE
RSC-1	170	A-553	9-30-53



A- NO. 33 (.113) DRILL 12 HOLES REQ.  
 B- DRILL & C'SINK FOR 4-40  
 FLAT HEAD SCREW 2 HOLES REQ.

REF: LD-163

REQ.	ITEM	PART NO.	DESCRIPTION	SYMBOL
	1/8		THE TECHNICAL MATERIEL CORP. MAMARONECK, NEW YORK	
	PHENOLIC	—#—	TERMINAL BOARD	
	XXXXP LAMINATE		RSC-1	
			CD.D. 9-30-53	G.T.O. <i>WDE</i>
			DRAWN	ELEC. DES. APP. MECH. DES. APP.
			<i>WDE 70</i>	G.T.O. <i>WDE</i>
			CHECKED	FINAL APPROVAL
				PX-179

ISSUE	ITEM	CHANGED FROM	DATE	CN. NO.	DRAFTS	CHECKER	ENG. APP.
TOLERANCES			SCALE <i>1/16</i>				
ALL OTHERS	DEC. DIM. ± FRAC. DIM. ± <i>1/64</i> ANGULAR DIM. ±		DRILL, PUNCH, COMMERCIAL STOCK SIZES AND MANUFACTURERS TOLERANCES ARE NOT INCLUDED.				

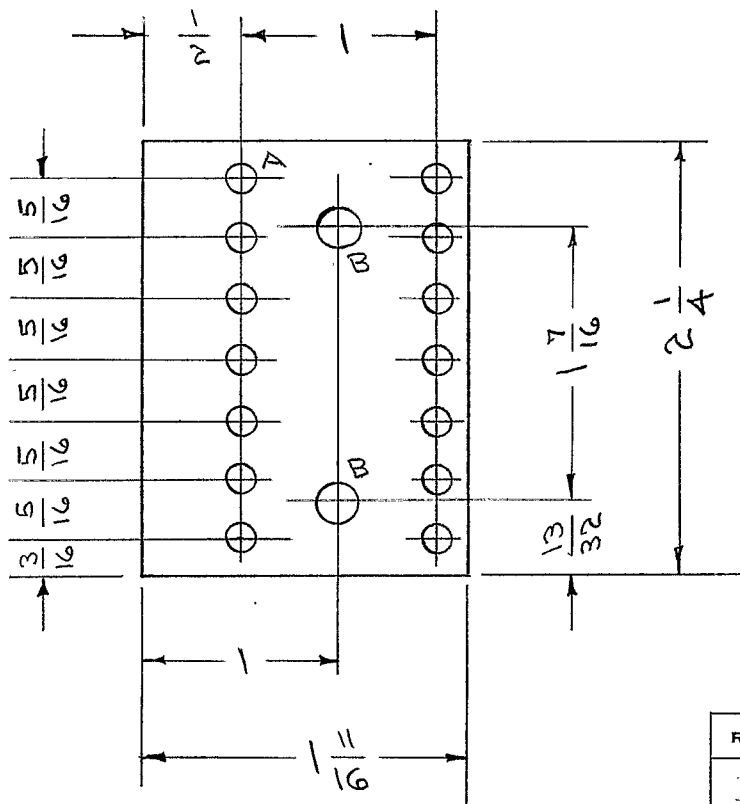
IF IT IS FOUND DESIRABLE TO CHANGE ANY TOLERANCE OR OTHER DETAIL SPECIFIED ON THIS DRAWING NOTIFY THE PURCHASER PROMPTLY.

PX-180

MAXIMUM ALLOWABLE TOLERANCES HAVE BEEN DETERMINED AND DEVIATIONS WILL BE CAUSE FOR REJECTION. REMOVE ALL BURRS AND SHARP EDGES

USED ON

MODEL	PROJECT NO.	ASS'Y. NO.	DATE
RSC-1	170		10-1-53



A - NO. 33 (.113) DRILL - 14 HOLES REQ.  
 B - NO. 11 (.191) DRILL - 2 HOLES REQ.

REQ.	ITEM	PART NO.	DESCRIPTION	SYMBOL
	1/8		THE TECHNICAL MATERIEL CORP. MAMARONECK, NEW YORK	
	PHENOLIC	— # —	BOARD, TERMINAL	
	XXXXP LAMINATE		TB 4 RSC-1	
			C.D. 10-1-53	G.T.O. <i>WJC</i>
			DRAWN	ELEC. DES. APP. MECH. DES. APP.
			<i>JAD</i>	G.T.O. <i>WJC</i>
			CHECKED	FINAL APPROVAL
				PX-180

ISSUE	ITEM	CHANGED FROM	DATE	CN. NO.	DRAFTS	CHECKER	ENG. APP.
TOLERANCES			SCALE $\frac{1}{16}$				
ALL OTHERS	DEC. DIM. $\pm$ FRAC. DIM. $\pm \frac{1}{64}$ ANGULAR DIM. $\pm$		DRILL, PUNCH, COMMERCIAL STOCK SIZES AND MANUFACTURERS TOLERANCES ARE NOT INCLUDED.				

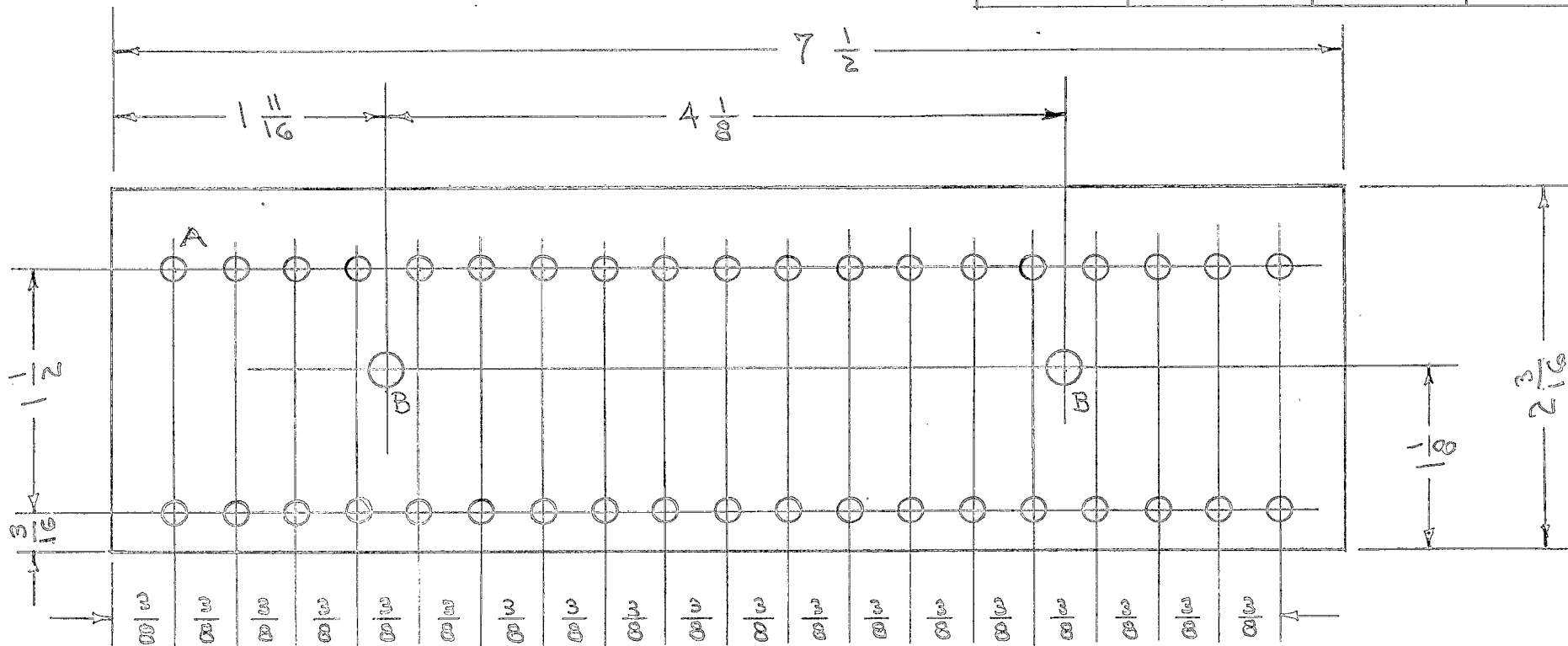
IF IT IS FOUND DESIRABLE TO CHANGE ANY TOLERANCE OR OTHER DETAIL SPECIFIED ON THIS DRAWING NOTIFY THE PURCHASER PROMPTLY.

PX-181 D

MAXIMUM ALLOWABLE TOLERANCES HAVE BEEN DETERMINED AND DEVIATIONS WILL BE CAUSE FOR REJECTION. REMOVE ALL BURRS AND SHARP EDGES

USED ON

MODEL	PROJECT NO.	ASS'Y. NO.	DATE
RSM-2	170	A-559	10-2-53



A- NO. 32(.116) DRILL 38 HOLES REQ.  
 B- NO. 12(.189) DRILL 2 HOLES REQ.

REQ.	ITEM	PART NO.	DESCRIPTION	SYMBOL
		1/8	THE TECHNICAL MATERIEL CORP. MAMARONECK, NEW YORK	
		STOCK SIZE		
		PHENOLIC	BOARD, TERMINAL	
		MATERIAL	RSM-2	
		WEIGHT PER PC.	C.D.D. 10-2-53 P.L. K. 10-5-53	
		XXXP LAMINATE		
		TYPE & TEMPER		
		HEAT TREAT. SPEC.		
		FINISH & SPEC. NO.		
			CHECKED SUPERCEDES RSM-1	FINAL APPROVAL PX-181 D

D	1	NO. 32 DRILL WAS 2.9MM.	1/16	4	B	CSO	W.D.
C	1	3/16 WAS 1/4	228-58	3	H.B.	FAIR	W.D.
B	1	23/16 WAS 2/4	1/20/58	2	CSO	M.T.S.	W.D.
A	2	2.9MM WAS NO. 33	1/16	1	CSO	FAIR	W.D.
	1	WAS RSM-1					

ISSUE	ITEM	CHANGED FROM	DATE	CN. NO.	DRAFTS	CHECKER	ENG. APP.
TOLERANCES							
SCALE				H			
DRILL, PUNCH, COMMERCIAL STOCK SIZES AND MANUFACTURERS TOLERANCES ARE NOT INCLUDED.							
ALL OTHERS DEC. DIM. ± FRAC. DIM. ± ANGULAR DIM. ±							





IF IT IS FOUND DESIRABLE TO CHANGE ANY TOLERANCE OR OTHER DETAIL SPECIFIED ON THIS DRAWING NOTIFY THE PURCHASER PROMPTLY.

PX-190 B

MAXIMUM ALLOWABLE TOLERANCES HAVE BEEN DETERMINED AND DEVIATIONS WILL BE CAUSE FOR REJECTION. REMOVE ALL BURRS AND SHARP EDGES

REQ. PER UNIT

USED ON

1

MODEL

PROJECT NO.

ASS'Y. NO.

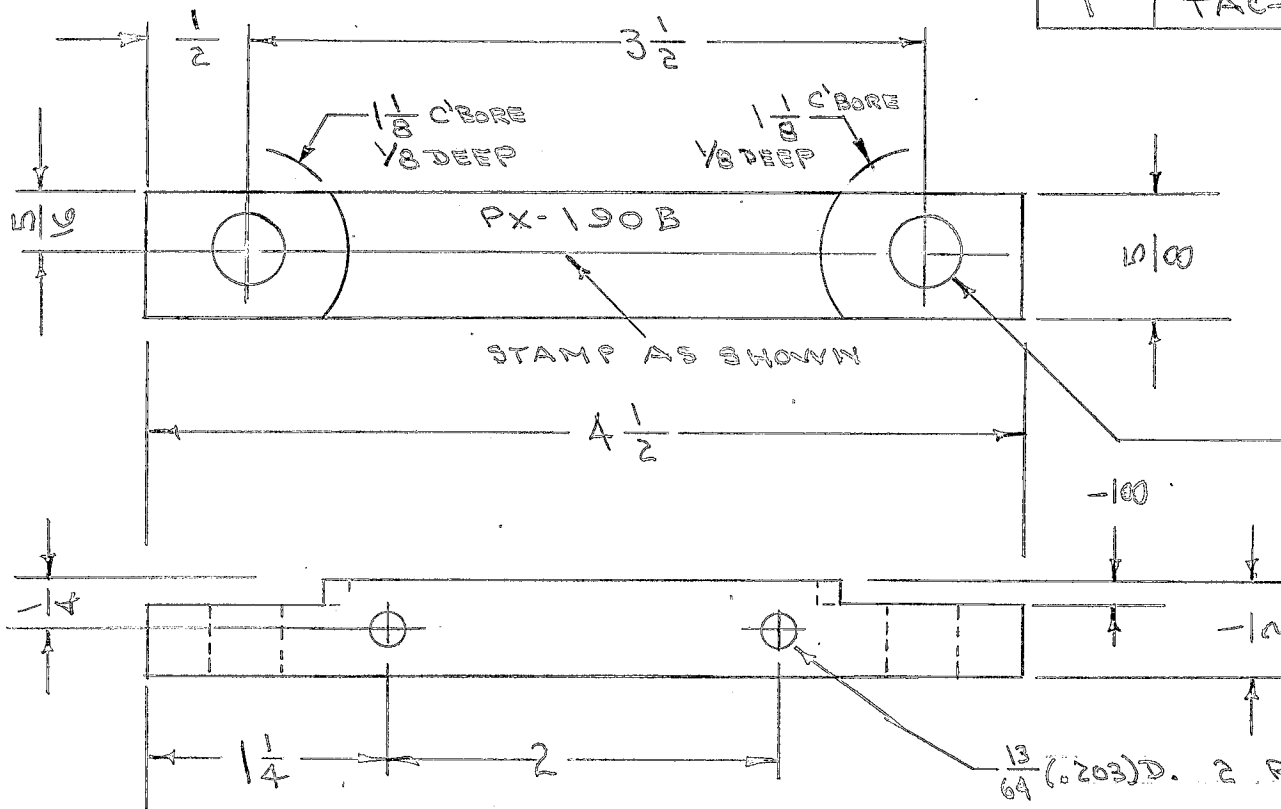
DATE

TAC-1

132

A-717

1-21-54



\* FUNGUS PROOFING PER TMC SPECIFICATION S-113

REQ.	ITEM	PART NO.	DESCRIPTION	SYMBOL
		1/2 THK.	THE TECHNICAL MATERIEL CORP.	
		STOCK SIZE	MAMARONECK, NEW YORK	
		PHENOLIC	REAR COND. ELEMENT	
		MATERIAL	TAC-1	
		WEIGHT PER PC.		
		XXX LAMINATE		
		TYPE & TEMPER		
		HEAT TREAT. SPEC.		
		NATURAL *		
		FINISH & SPEC. NO.		

ISSUE	ITEM	CHANGED FROM	DATE	CN. NO.	DRAFTS	CHECKER	ENG. APP.
B		5113 ADDED	1/13/54	11186	A.M.	JAB	OSB
A	1	25/64 WAS 3/8	2/10/54	1	CDD	JAB	WJC

TOLERANCES	SCALE	DRILL, PUNCH, COMMERCIAL STOCK SIZES AND MANUFACTURERS TOLERANCES ARE NOT INCLUDED.
ALL OTHERS DEC. DIM. ± FRAC. DIM. ± 1/64 ANGULAR DIM. ±	1/2"	



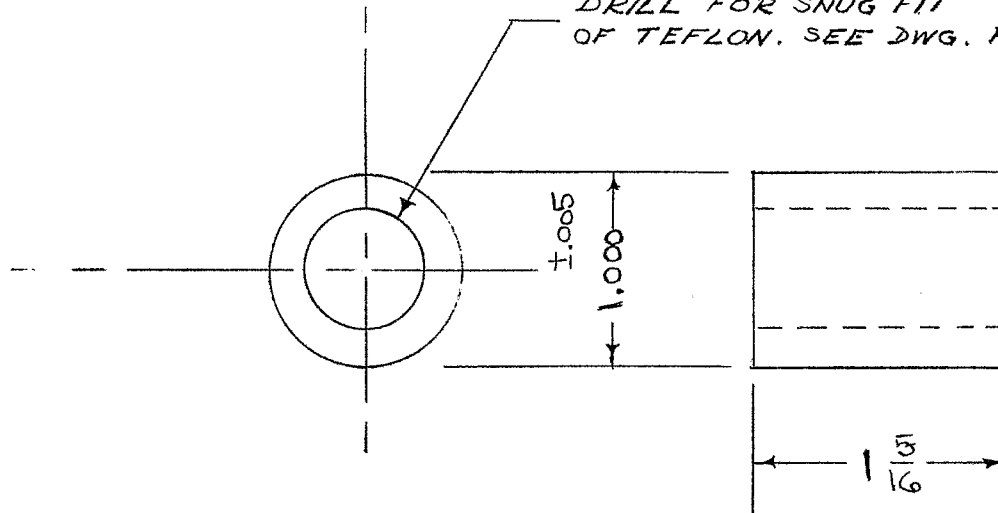
IF IT IS FOUND DESIRABLE TO CHANGE ANY TOLERANCE OR OTHER DETAIL SPECIFIED ON THIS DRAWING NOTIFY THE PURCHASER PROMPTLY.

PX-196 D

MAXIMUM ALLOWABLE TOLERANCES HAVE BEEN DETERMINED AND DEVIATIONS WILL BE CAUSE FOR REJECTION. REMOVE ALL BURRS AND SHARP EDGES

REQ. PER UNIT	USED ON			
	MODEL	PROJECT NO.	ASS'Y. NO.	DATE
1	TAC-1	132	A-716	1-4-54

NOTE:  
DRILL FOR SNUG FIT  
OF TEFLON. SEE DWG. PX-230



\* FUNGUS PROOFING PER  
TMC SPECIFICATION S-113

REF: PX-230 INSULATOR CON. BUSHING

REQ.	ITEM	PART NO.	DESCRIPTION	SYMBOL
	1.000	ROD	THE TECHNICAL MATERIEL CORP. MAMARONECK, NEW YORK	
		STOCK SIZE		
	PHENOLIC	— 4 —	CONNECTING BUSHING	
		MATERIAL	WEIGHT PER PC.	
	LINEN BASE		TAC-1	
		TYPE & TEMPER	C.D.D.	
			ORP	WDC
			DRAWN	ELEC. DES. APP. MECH. DES. APP.
			HEAT TREAT. SPEC.	
		NATURAL *	CHECKED	FINAL APPROVAL
		FINISH & SPEC. NO.		

D		S113 ADDED	4/13/64	11186	A.M.	WDC	ORP
C	1	NOTE ADDED	11-13-54	3	R.R.	WDC	ORP
B	1	REDRAWN - HOLES REMOVED	4/11/54	2	C.D.D.	WDC	ORP
ISSUE	ITEM	CHANGED FROM	DATE	CN. NO.	DRAFTS	CHECKER	ENG. APP.
TOLERANCES			SCALE				
ALL OTHERS	DEC. DIM. ± .005 FRAC. DIM. ± 1/64 ANGULAR DIM. ±		DRILL, PUNCH, COMMERCIAL STOCK SIZES AND MANUFACTURERS TOLERANCES ARE NOT INCLUDED.				

PX-196 D

IF IT IS FOUND DESIRABLE TO CHANGE ANY TOLERANCE OR OTHER DETAIL SPECIFIED ON THIS DRAWING NOTIFY THE PURCHASER PROMPTLY.

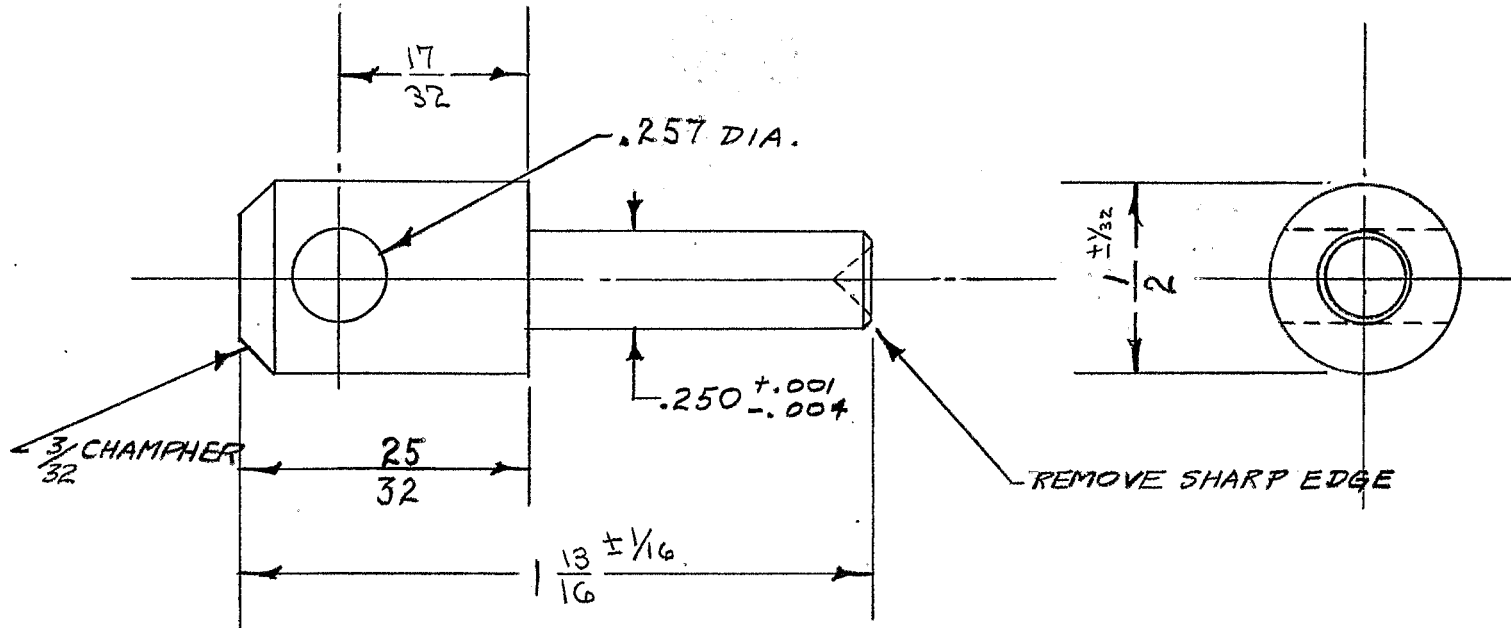
PX-197

B

MAXIMUM ALLOWABLE TOLERANCES HAVE BEEN DETERMINED AND DEVIATIONS WILL BE CAUSE FOR REJECTION. REMOVE ALL BURRS AND SHARP EDGES

USED ON

AMT PER UNIT	MODEL	PROJECT NO.	ASS'Y. NO.	DATE
2	TAC-1	132	A-646	2-28-54



\* FUNGUS PROOFING PER TMC SPECIFICATION S-113

REQ.	ITEM	PART NO.	DESCRIPTION	SYMBOL
		1/2 D. ROD	THE TECHNICAL MATERIEL CORP.	
		STOCK SIZE	MAMARONECK, NEW YORK	
		PHENOLIC	CONNECTING ROD	
		MATERIAL	TAC-1	
		WEIGHT PER PC.	15 12-16-53	
		LINEN BASE	ARB	WDC
		TYPE & TEMPER	DRAWN	ELEC. DES. APP.
		HEAT TREAT. SPEC.	ARB	MECH. DES. APP.
		FINISH & SPEC. NO.	CHECKED	FINAL APPROVAL
			ARB	WDC
			PX-197	B

ISSUE	ITEM	CHANGED FROM	DATE	CN. NO.	DRAFTS	CHECKER	ENG. APP.
B		S113 ADDED	4/13/64	11186	A.M.	Hale	WDC
A	2	17/32 WAS 1/2	3/10/54	W.D.C.	C.D.D.	B.B.	WDC
	1	25/32 WAS 3/4					

TOLERANCES	SCALE	DRILL, PUNCH, COMMERCIAL STOCK SIZES AND MANUFACTURERS TOLERANCES ARE NOT INCLUDED.
ALL OTHERS DEC. DIM. ± FRAC. DIM. ± 1/64 ANGULAR DIM. ±	1/16	