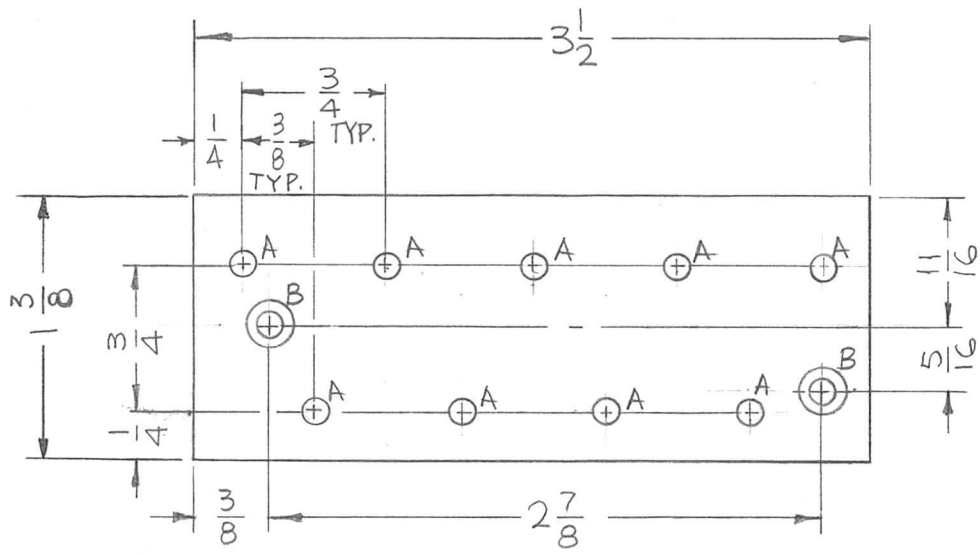


REQ. PER UNIT	USED ON			PX1000	A
	MODEL	ASS'Y. NO.	DATE		
1	TLAA-2.5K	A5491	9-28-66		



HOLES:
A - 1/8 DIA. (9REQ.)
B - DRILL .120 DIA. C'SINK 82° TO .230 DIA. (2REQ.)

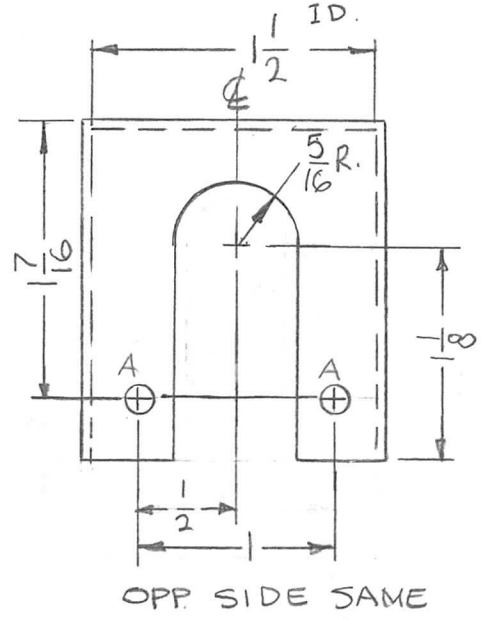
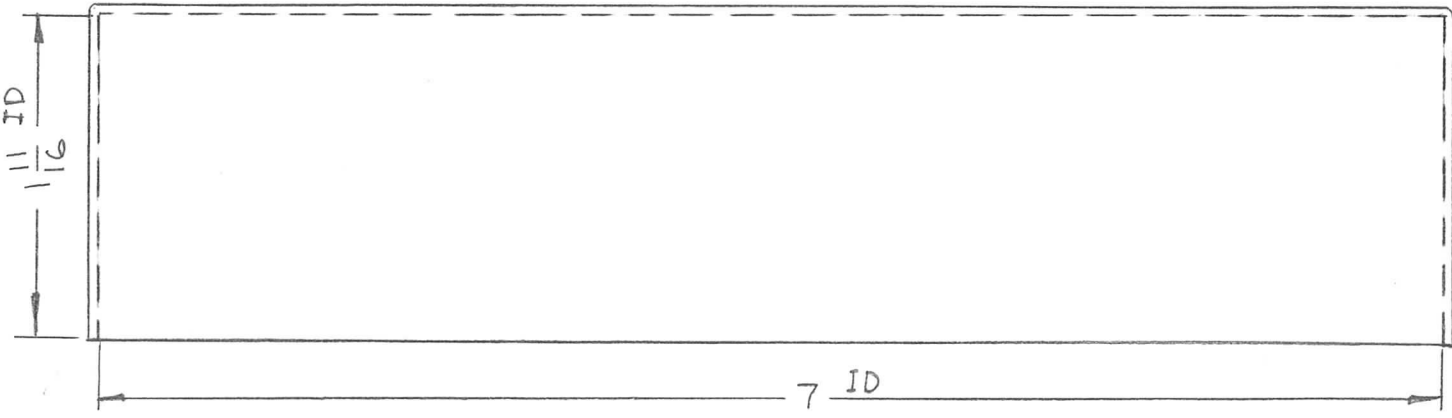
REF: LD1493

REQ.	ITEM	PART NO.	F. BUDETTI	DESCRIPTION	SYMBOL	
A	ADD 1-3/8 DIM & FINISH. MATERIAL WAS BAKELITE	2.16.67	17799	RME	<i>QCB</i>	
Ø	ORIGINAL RELEASE FOR PRODUCTION	11.18.66	Ø	RME		
X	EXP. RELEASE	9.28.66	X	<i>ME</i>	<i>aa</i>	
SYM	DESCRIPTION	DATE	CH. NO.	DRAFTS	CHECKER	ENG. APP.
UNLESS OTHERWISE SPECIFIED DIMENSIONS ARE IN INCHES AND INCLUDE CHEMICALLY APPLIED OR PLATED FINISHES		SCALE 1:1				
DECIMALS .X ± .05 .XX ± .01 .XXX ± .005	TOLERANCES	FRACTIONS ± 1/64 ANGLES ± 0° 30'	CODE A			
XXX P	TYPE & TEMPER	HEAT TREAT. SPEC.	<i>ME</i>	<i>QCB</i>	<i>aa</i>	
NATURAL	FINISH & SPEC. NO.	ELEC. DES. APP.	<i>aa</i>	<i>BE</i>	PX1000 A	

REQ. PER UNIT	USED ON		
	MODEL	ASS'Y. NO.	DATE
1	AX-633	A5550	9-21-66
1	AX-646	A5553	9-21-66
1	AX-647	A5556	9-21-66

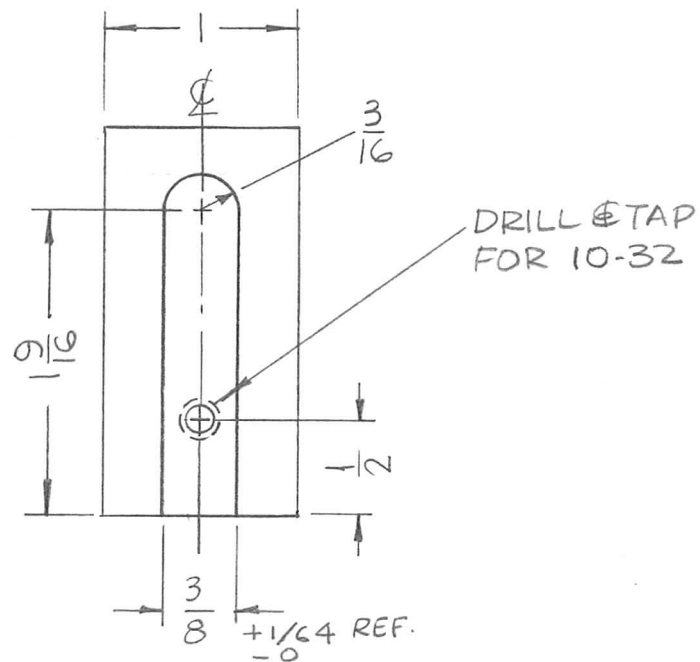
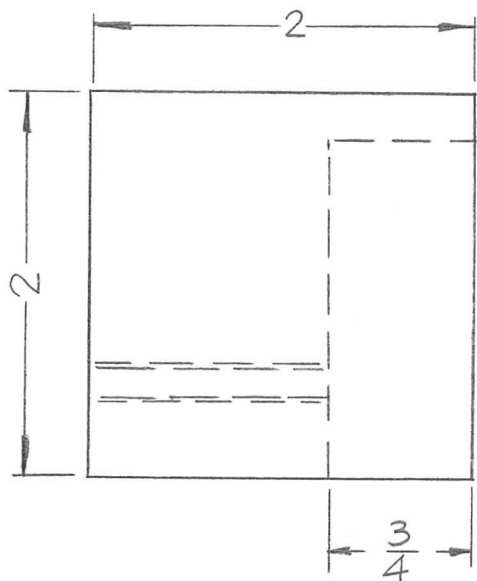
PX1001 \emptyset

HOLES:
A-9/64 DIA. (4REQ.)



SYM	DESCRIPTION	DATE	CH. NO.	DRAFTS	CHECKER	ENG. APP.	REQ. ITEM	PART NO.	F. BUDETTI DESCRIPTION	SYMBOL		
\emptyset	ORIGINAL RELEASE FOR PRODUCTION	12/30/66	\emptyset	RME								
X2	REF. FP204-3 DEL.	12-5-66	X2	<i>[Signature]</i>	<i>[Signature]</i>	<i>[Signature]</i>	3 LAYERS		THE TECHNICAL MATERIEL CORP. MAMARONECK. NEW YORK			
X1	5/16 WAS 1/4, 1 CUTOUT ADDED	11-16-66	X1	<i>[Signature]</i>	<i>[Signature]</i>		STOCK SIZE					
X	EXP. RELEASE	9-21-66	X	<i>[Signature]</i>	<i>[Signature]</i>	<i>[Signature]</i>	FIBERGLASS			SHIELD, TERM. STRIP		
							MATERIAL					
UNLESS OTHERWISE SPECIFIED DIMENSIONS ARE IN INCHES AND INCLUDE CHEMICALLY APPLIED OR PLATED FINISHES		SCALE							<i>[Signature]</i>	<i>[Signature]</i>	<i>[Signature]</i>	
		1:1										
DECIMALS .X \pm .05 .XX \pm .01 .XXX \pm .005		FRACTIONS \pm 1/64 ANGLES \pm 0° 30'		TOLERANCES		CODE	TYPE & TEMPER		HEAT TREAT. SPEC.	DRAWN	CHECKED	FINAL APPROVAL
						4	S115 TMC GREY			<i>[Signature]</i>	<i>[Signature]</i>	PX1001 \emptyset
							FINISH & SPEC. NO.		ELEC. DES. APP.	MECH. DES. APP.		

REQ. PER UNIT	USED ON			PX1002	Ø
	MODEL	ASS'Y. NO.	DATE		
2	KIT-246		11-11-66		
2	KIT-247		11-11-66		



SYM	DESCRIPTION	DATE	CH. NO.	DRAFTS	CHECKER	ENG. APP.	REQ. ITEM	PART NO.	F. BUDETTI DESCRIPTION	SYMBOL	
Ø	ORIGINAL RELEASE FOR PRODUCTION	11-18-66	Ø	RME			AS SHOWN		THE TECHNICAL MATERIEL CORP. MAMARONECK, NEW YORK		
X	EXP RELEASE	11-14-66					STOCK SIZE		BLOCK, MTG SHIELD		
							PHENOLIC				
							MATERIAL				
							XXXP				
							TYPE & TEMPER	HEAT TREAT. SPEC.	DRAWN	CHECKED	FINAL APPROVAL
							S113-FUNGUS PROOF				
							FINISH & SPEC. NO.	ELEC. DES. APP.	MECH. DES. APP.	PX1002	Ø

UNLESS OTHERWISE SPECIFIED
DIMENSIONS ARE IN INCHES AND INCLUDE
CHEMICALLY APPLIED OR PLATED FINISHES

SCALE
1:1

DECIMALS
.X ± .05
.XX ± .01
.XXX ± .005

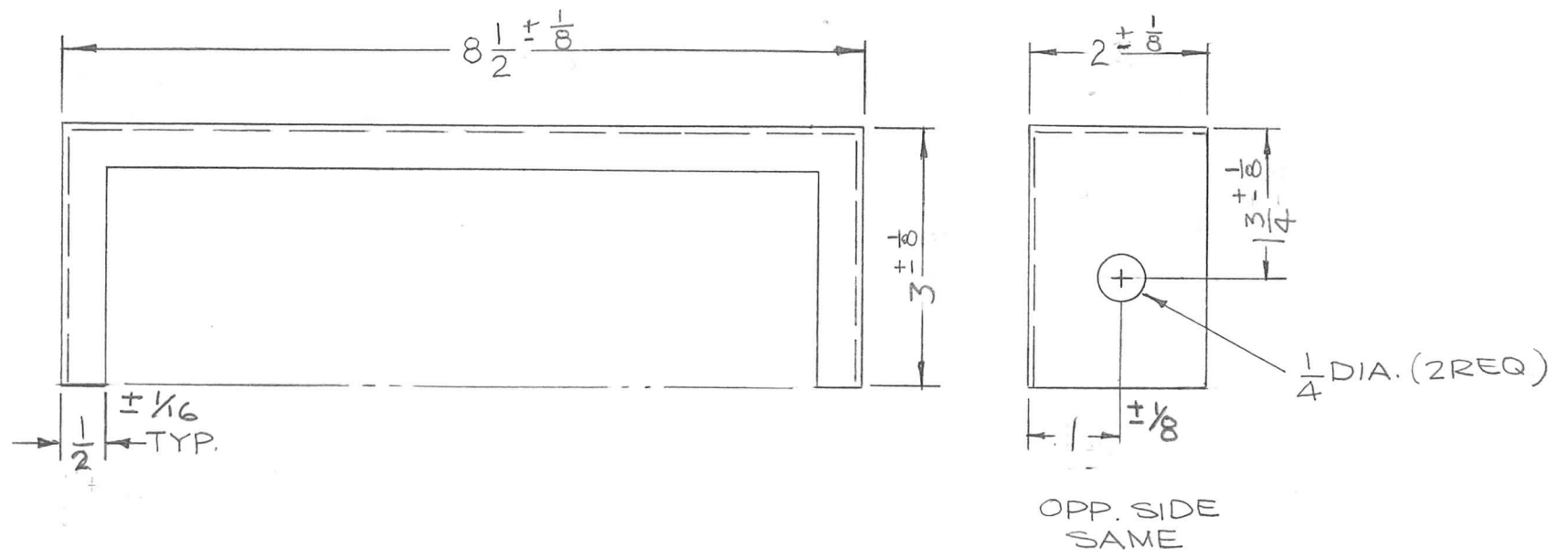
TOLERANCES

FRACTIONS
± 1/64
ANGLES
± 0° 30'

CODE
A

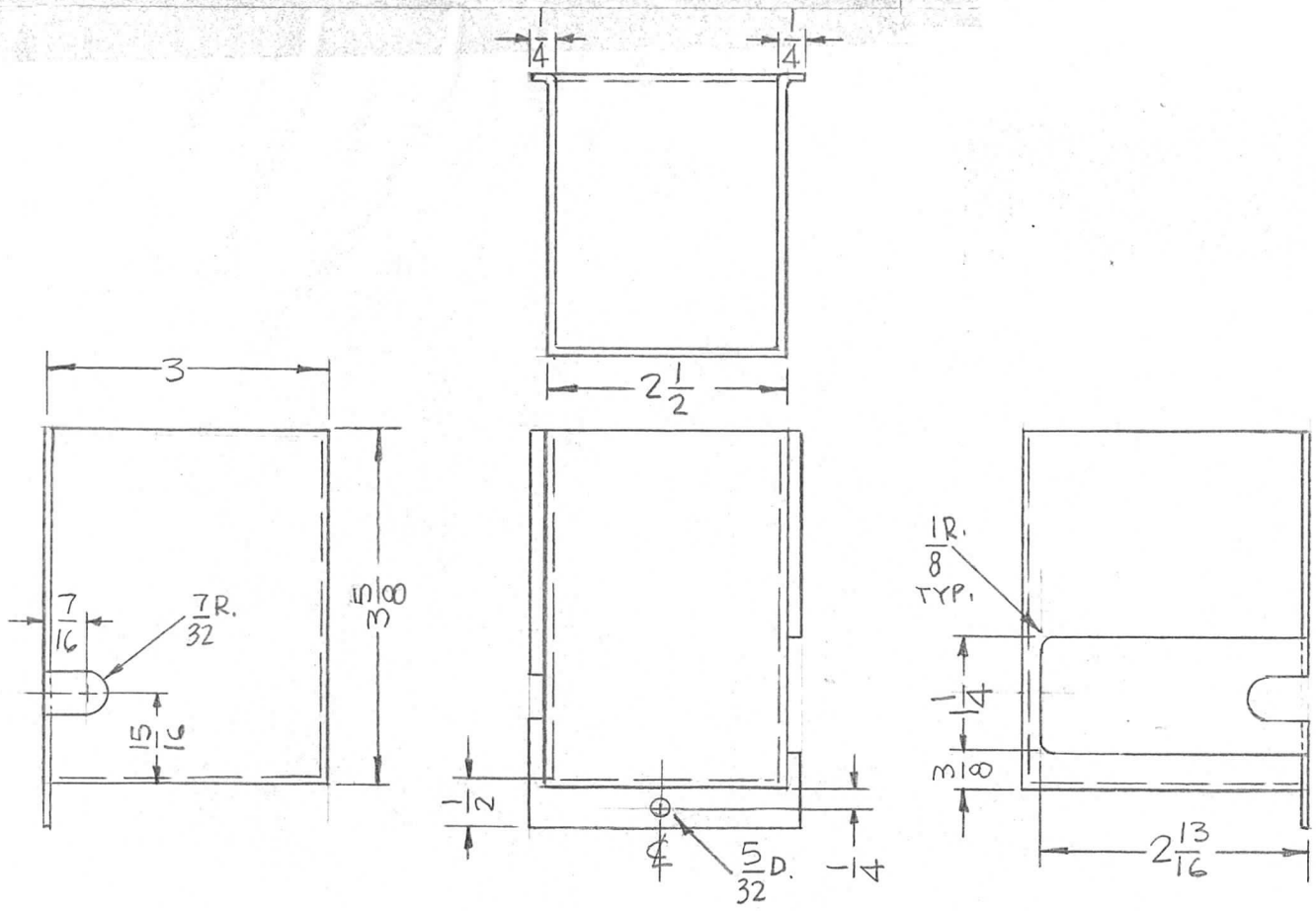
REQ. PER UNIT	USED ON		
	MODEL	ASS'Y. NO.	DATE
4	KIT-247		11-2-66
4	GPT-200K		11-2-66

PX1003 A



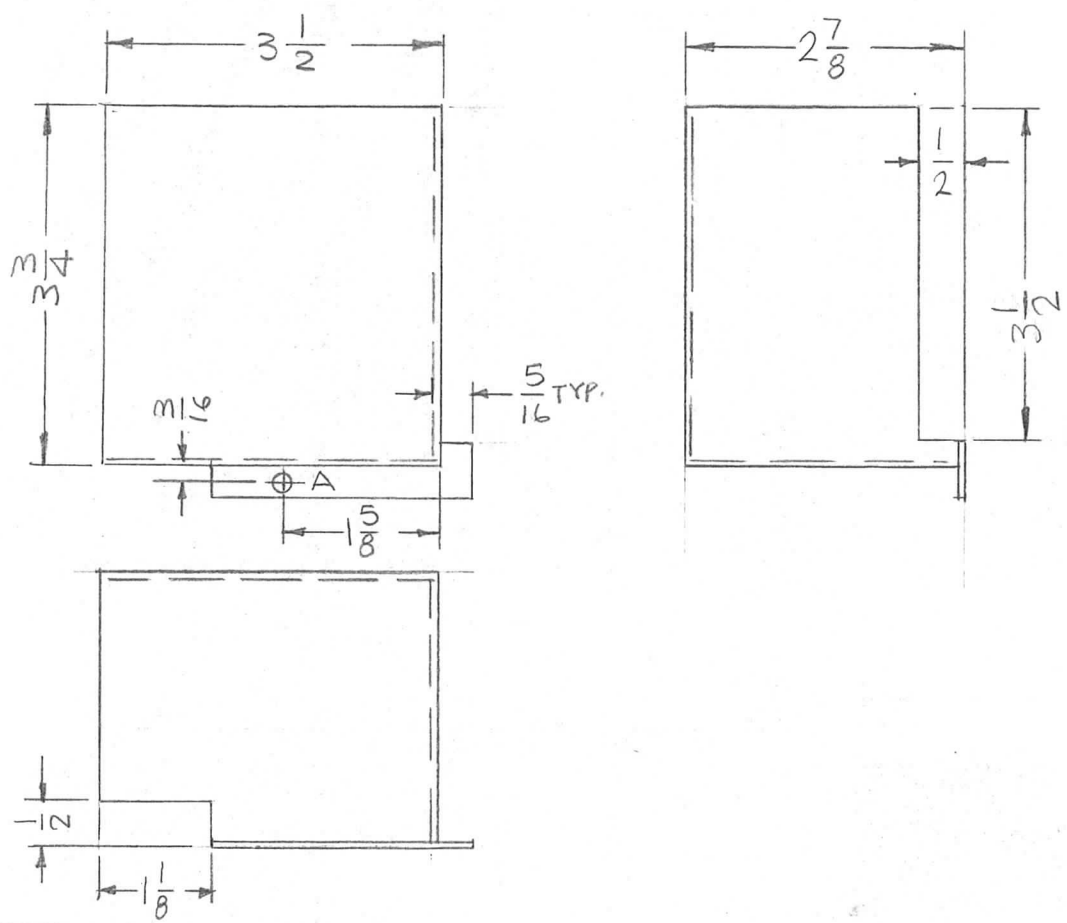
SYM	DESCRIPTION	DATE	CH. NO.	DRAFTS	CHECKER	ENG. APP.	REQ. ITEM	PART NO.	F. BUDETT (DESCRIPTION)	SYMBOL	
A	TOL. ADDED	8-25-67	18474	H.G.	<i>[Signature]</i>	FB	3	LAYERS	THE TECHNICAL MATERIEL CORP. MAMARONECK, NEW YORK COVER, PROTECT CIRCUIT BREAKER PSA & PSB	A	
Ø	ORIG. RELEASE FOR PROD	6-22-67	Ø	RG				STOCK SIZE			
X	EXP. RELEASE	11-2-66			<i>[Signature]</i>	<i>[Signature]</i>		FIBERGLASS			
								MATERIAL			
UNLESS OTHERWISE SPECIFIED DIMENSIONS ARE IN INCHES AND INCLUDE CHEMICALLY APPLIED OR PLATED FINISHES		SCALE		1:2					<i>[Signature]</i>	<i>[Signature]</i>	<i>[Signature]</i>
DECIMALS .X ± .05 .XX ± .01 .XXX ± .005	TOLERANCES	FRACTIONS ± 1/64 ANGLES ± 0° 30'	CODE A						TYPE & TEMPER	HEAT TREAT. SPEC.	
									1115 SMOOTH GRAY ENAM.		
									FINISH & SPEC. NO.	ELEC. DES. APP.	MECH. DES. APP.
											PX1003

REQ. PER UNIT	USED ON			PX1004 Ø
	MODEL	ASS'Y. NO.	DATE	
1	TCP-1		12-2-66	



ISSUE	ITEM	CHANGED FROM	DATE	CH. NO.	DRAFTS	CHECKER	ENG. APP.	REQ. ITEM	PART NO.	F. BUDETTI	DESCRIPTION	SYMBOL	
								3 LAYERS			THE TECHNICAL MATERIEL CORP. MAMARONECK, NEW YORK		
Ø		ORIGINAL RELEASE FOR PRODUCTION	3-10-67		L.A.K.			STOCK SIZE					
X		EXP. RELEASE	12-5-66		<i>[Signature]</i>	<i>[Signature]</i>	<i>[Signature]</i>	FIBERGLASS			SHIELD, SWITCH		
								MATERIAL					
TOLERANCES			SCALE:										
DEC. DIM. ±			MAXIMUM ALLOWABLE TOLERANCES HAVE BEEN DETERMINED AND ANY DEVIATIONS WILL BE CAUSE FOR REJECTION. REMOVE ALL BURRS AND SHARP EDGES					TYPE & TEMPER	HEAT TREAT. SPEC.	DRAWN	CHECKED	FINAL APPROVAL	
FRAC. DIM. ±								S115 SMOOTH GREY ENAM.					
ANGULAR DIM. ±								FINISH & SPEC. NO.		ELEC. DES. APP.	MECH. DES. APP.		

REQ. PER UNIT	USED ON			PX1005 \emptyset
	MODEL	ASS'Y. NO.	DATE	
1	TCP-2		12-2-66	

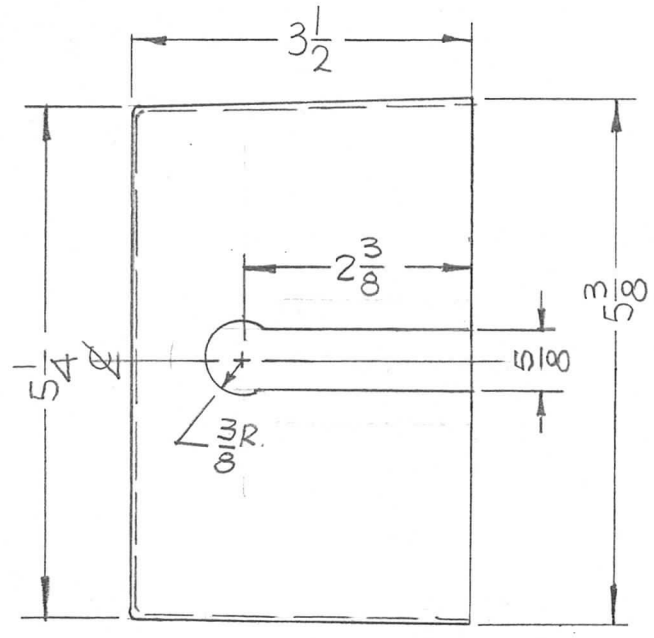
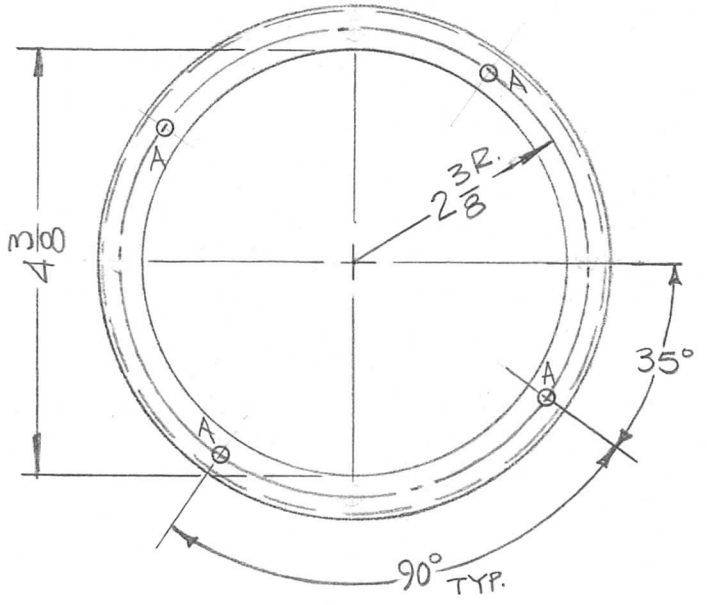


HOLE
A-11/64 DIA. 1REQ.

								REQ. ITEM	PART NO.	F. BUDETTI	DESCRIPTION	SYMBOL	
									3 LAYERS		THE TECHNICAL MATERIEL CORP.		
									STOCK SIZE		MAMARONECK.	NEW YORK	
\emptyset		ORIGINAL RELEASE FOR PRODUCTION	3-10-67		LAK.				FIBERGLASS		SHIELD, SWITCH		
X		EXP. RELEASE	12-2-66										
ISSUE	ITEM	CHANGED FROM	DATE	CH. NO.	DRAFTS	CHECKER	ENG. APP.						
TOLERANCES			SCALE: 1:2							SRG			
DEC. DIM. \pm			MAXIMUM ALLOWABLE TOLERANCES HAVE BEEN DETERMINED AND ANY DEVIATIONS WILL BE CAUSE FOR REJECTION. REMOVE ALL BURRS AND SHARP EDGES					TYPE & TEMPER	HEAT TREAT. SPEC.	DRAWN	CHECKED	FINAL APPROVAL	
FRAC. DIM. \pm								SIIS SMOOTH GREY ENAM					
ANGULAR DIM. \pm								FINISH & SPEC. NO.		ELEC. DES. APP.	MECH. DES. APP.		

REQ. PER UNIT	USED ON			PX10006	Ø
	MODEL	ASS'Y. NO.	DATE		
1	TLAA-2.5K		11-28-66		

HOLES:
A- 11/64 DIA. (4 REQ.)

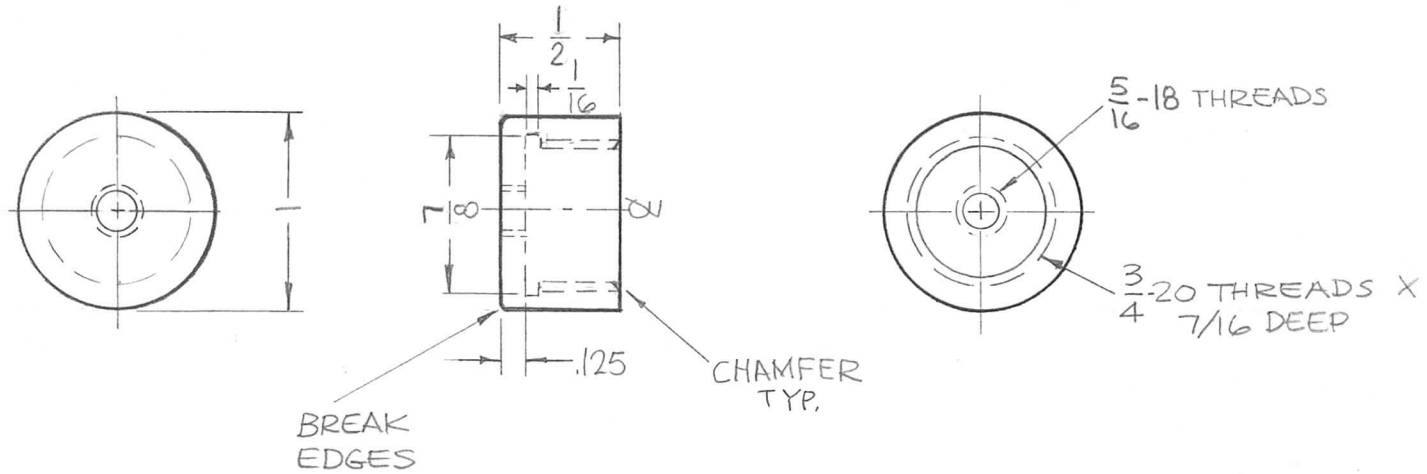


REQ.	ITEM	PART NO.	F. BUDETTI DESCRIPTION				SYMBOL
		3 LAYERS	THE TECHNICAL MATERIEL CORP.				
		STOCK SIZE	MAMARONECK, NEW YORK				
		FIBERGLASS	BAFFLE, AIR				
		MATERIAL					
		TYPE & TEMPER	HEAT TREAT. SPEC.	DRAWN	CHECKED	FINAL APPROVAL	
		S115 SMOOTH GRAY ENAM.					
		FINISH & SPEC. NO.	ELEC. DES. APP.	MECH. DES. APP.	PX10006 Ø		

UNLESS OTHERWISE SPECIFIED DIMENSIONS ARE IN INCHES AND INCLUDE CHEMICALLY APPLIED OR PLATED FINISHES	SCALE 1:2	REVISIONS	DATE	CH. NO.	DRAFTS	CHECKER	ENG. APP.
Ø ORIGINAL RELEASE FOR PRODUCTION	3.1.67						
X EXP. RELEASE	11-28-66						
DECIMALS .X ± .05 .XX ± .01 .XXX ± .005	FRACTIONS ± 1/64 ANGLES ± 0° 30'	TOLERANCES	CODE A				

MIL 7000

REQ. PER UNIT	USED ON			PX1007 Ø
	MODEL	ASS'Y. NO.	DATE	
1	TLAA-2.5K		11-30-66	
1	RAK-110-2		1-19-67	



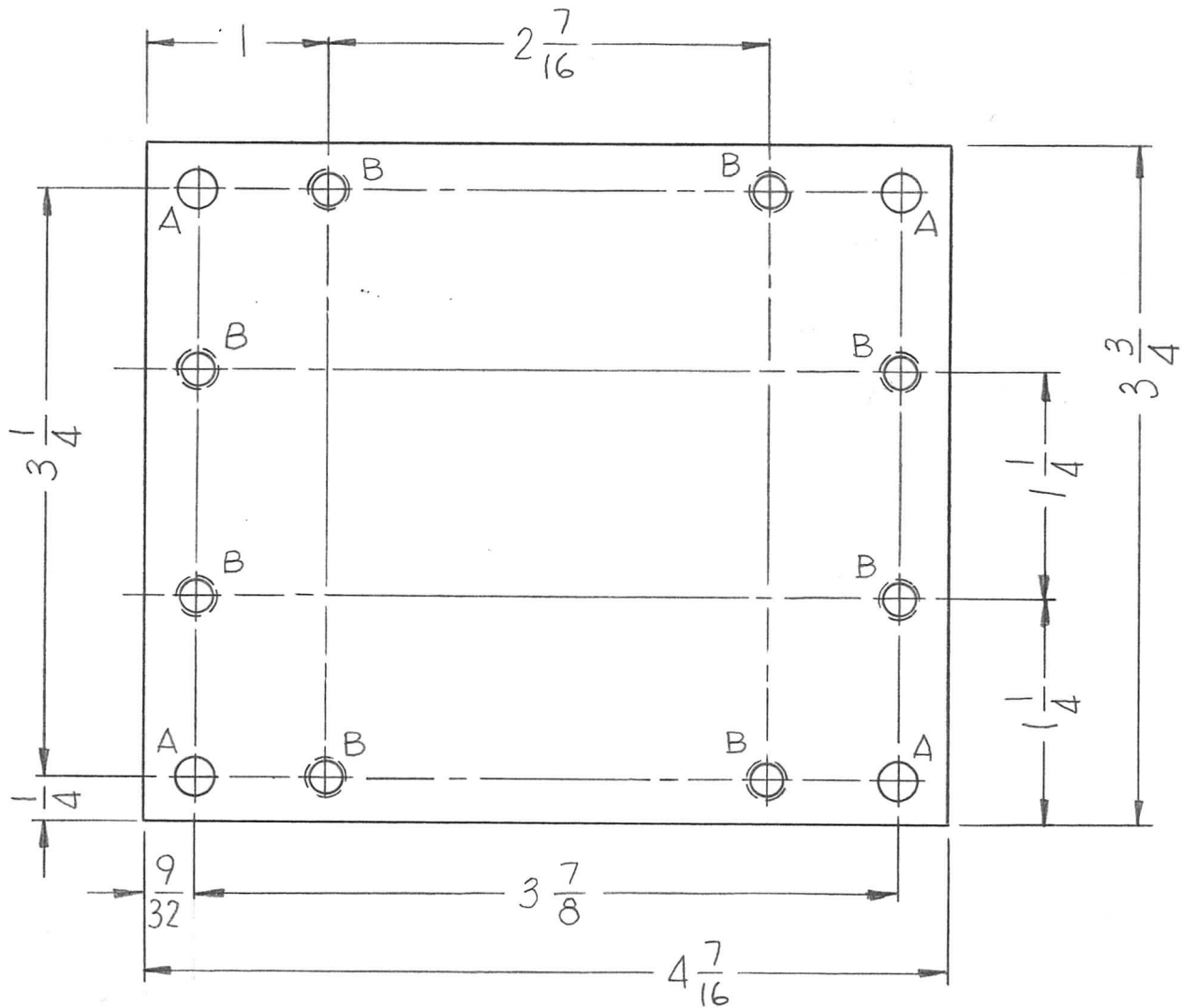
MATES WITH PM1332

SYM	DESCRIPTION	DATE	CH. NO.	DRAFTS	CHECKER	ENG. APP.	REQ. ITEM	PART NO.	F. BUDETTI	DESCRIPTION	SYMBOL	
Ø	ORIGINAL RELEASE FOR PRODUCTION	3.1.67	-4	WBO			AS SHOWN			THE TECHNICAL MATERIEL CORP. MAMARONECK, NEW YORK		
X ₁	5/16-18 WAS 1/4, MOD. WAS TFR254	1-19-67	X ₁	WBO	RZI	RZI	STOCK SIZE					
X	EXP. RELEASE	11-30-66	X	WBO	WBO	WBO	TEFLON			CAP, CONTACT HOLDER		
							MATERIAL					
							TFE		WBO	JAN 2/28/67	WBO	
UNLESS OTHERWISE SPECIFIED DIMENSIONS ARE IN INCHES AND INCLUDE CHEMICALLY APPLIED OR PLATED FINISHES							SCALE					
							1:1					
DECIMALS .X ± .05 .XX ± .01 .XXX ± .005		FRACTIONS ± 1/64 ANGLES ± 0° 30'		CODE A			TYPE & TEMPER HEAT TREAT. SPEC. NATURAL		DRAWN CHECKED WBO		FINAL APPROVAL PX1007 Ø	
							FINISH & SPEC. NO.		ELEC. DES. APP.		MECH. DES. APP.	

M/1 20/67

APPROVED NO. 1000

APPLICATION			REVISIONS						
QTY	MODEL USED ON	ASS'Y NO.	LTR	DESCRIPTION	DATE	E.M.N.NO	DRAFT	CHKD	APPD
2	TRIG2A	A4577	X ₁	REVISED & REDRAWN FR (1) SIZE	3.16.67		WFO	JHO	YB
			Ø	ORIG. RELEASE FOR PROD.	4-13-67				



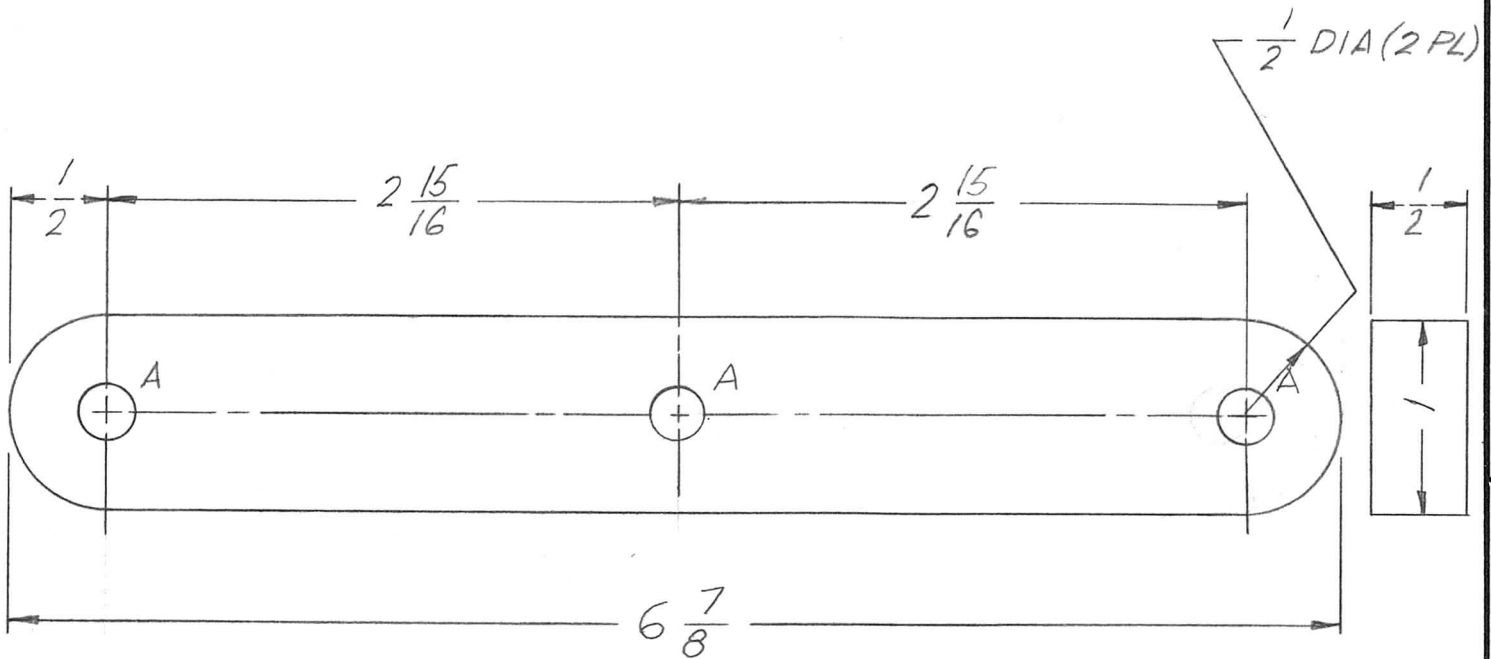
~HOLE~

A - 13/64 DIA (4 REQ)

B - 8-32 TAP THRU (8 REQ)

UNLESS OTHERWISE SPECIFIED DIMENSIONS ARE IN INCHES AND INCLUDE CHEMICALLY APPLIED OR PLATED FINISHES	REQ'D	ITEM	PART NUMBER	DESCRIPTION	SYM.
	L. BUTLER		LIST OF MATERIAL		
DECIMALS .X ± .05 .XX ± .01 .XXX ± .005	FRACTIONS 1/64 ANGLES 0° - 30'	FINAL APPROVAL	DATE	THE TECHNICAL MATERIEL CORP. MAMARONECK, NEW YORK PLATE, XFMR MTG	
MATERIAL 3/8 THK NAT XXXP PHENOLIC	MECH. DES.	DATE	4/13/67		
FINISH S113 FUNGUS PROOF	ELECT. DES.	DATE			
	CHECKED	DATE	4/13/67		
	DRAWN	DATE	3.16.67		
NOTICE TO PERSONS RECEIVING THIS DRAWING THE TECHNICAL MATERIEL CORPORATION claims proprietary right in the material disclosed hereon. This drawing is issued in confidence for engineering information only and may not be reproduced or used to manufacture anything shown hereon without permission from THE TECHNICAL MATERIEL CORPORATION to the user. This drawing is loaned for mutual assistance and is subject to recall at any time.				SIZE A	CODE IDENT. NO. 82679
				DWG NO. PX1010	ISSUE Ø
SCALE 1:1			SHEET OF		

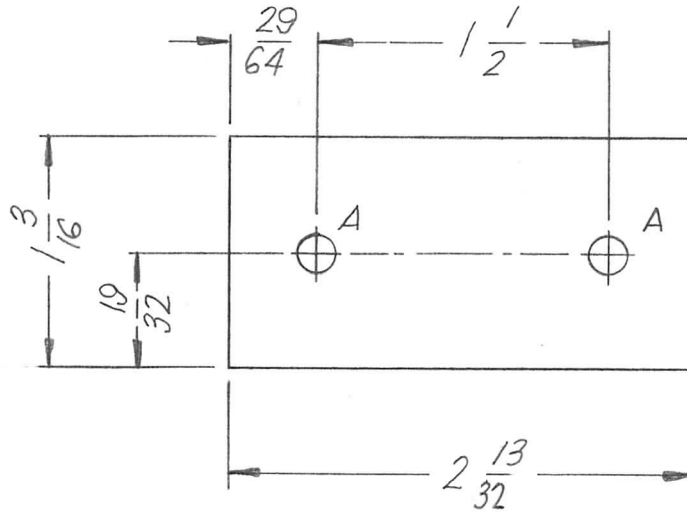
APPLICATION			REVISIONS						
QTY	MODEL USED ON	ASS'Y NO.	LTR	DESCRIPTION	DATE	E.M.N.NO	DRAFT	CHKD	APPD
2	LPFA-40K		X	EXP RELEASE	2/21/67	W	LHW	JW	W
			Ø	ORIGINAL RELEASE FOR PRODUCTION	3/3/67	Ø	CV		



- HOLE ~
A - 9/32 DIA (3 REQ)

UNLESS OTHERWISE SPECIFIED DIMENSIONS ARE IN INCHES AND INCLUDE CHEMICALLY APPLIED OR PLATED FINISHES		REQ'D	ITEM	PART NUMBER	DESCRIPTION	SYM.
DECIMALS .X ± .05 .XX ± .01 .XXX ± .005		F. BUDETTI		LIST OF MATERIAL		
FRACTIONS 1/64 ANGLES 0° - 30'		MECH. DES.		THE TECHNICAL MATERIEL CORP.		
MATERIAL G11 EPOXY		ELECT. DES.		MAMARONECK, NEW YORK		
FINISH S113 FUNGUS PROOF.		DRAWN LHW		SUPPORT BAR, FILTER ASS'Y		
NOTICE TO PERSONS RECEIVING THIS DRAWING THE TECHNICAL MATERIEL CORPORATION claims proprietary right in the material disclosed hereon. This drawing is issued in confidence for engineering information only and may not be reproduced or used to manufacture anything shown hereon without permission from THE TECHNICAL MATERIEL CORPORATION to the user. This drawing is loaned for mutual assistance and is subject to recall at any time.		SIZE A	CODE IDENT. NO. 82679	DWG NO. PX1013	ISSUE Ø	
SCALE 1:1		SHEET 1 OF 1				

APPLICATION			REVISIONS						
QTY	MODEL USED ON	ASS'Y NO.	LTR	DESCRIPTION	DATE	E.M.N.NO	DRAFT	CHKD	APPD
1	TRO-47A		X	EXPERIMENTAL RELEASE	2.21.67	---	LFD	SG	LB
			Ø	ORIGINAL RELEASE	8/26/69	Ø	CU.		



~ HOLE ~
A - 3/16 DIA (2 REQ)

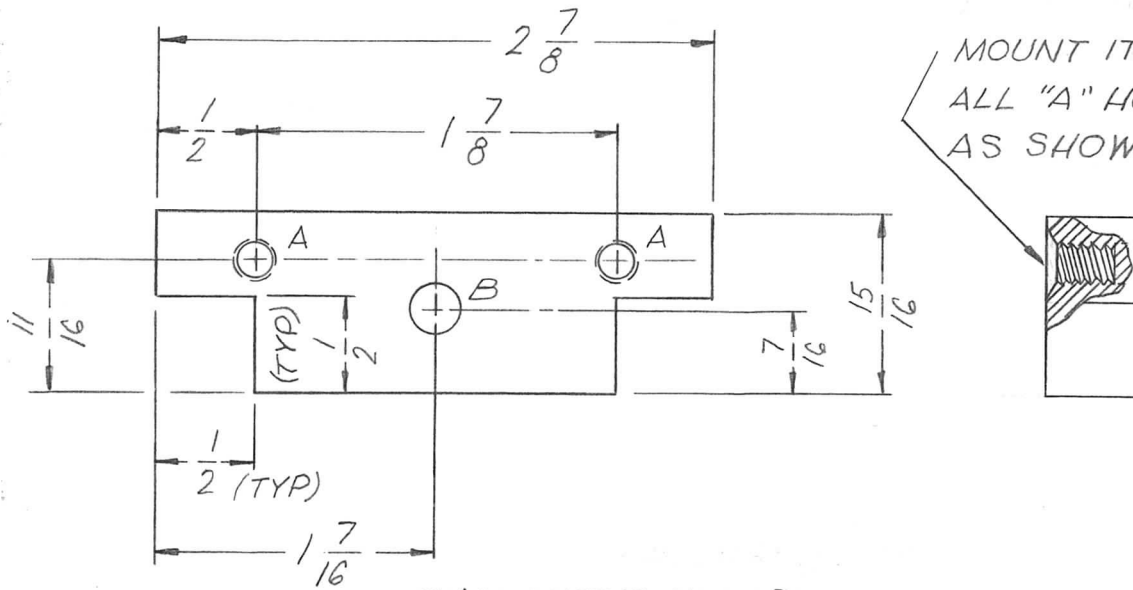
NOTE:
MAT'L: 1/8 PHENOLIC, XXXP
(LINEN BASE)

UNLESS OTHERWISE SPECIFIED DIMENSIONS ARE IN INCHES AND INCLUDE CHEMICALLY APPLIED OR PLATED FINISHES	REQ'D	ITEM	PART NUMBER	DESCRIPTION	SYM.
	L. BUTLER			LIST OF MATERIAL	
DECIMALS .X ± .05 .XX ± .01 .XXX ± .005	FRACTIONS 1/64 ANGLES 0° - 30'	TOLS.	FINAL APPROVAL SPM	DATE 8/26/69	THE TECHNICAL MATERIEL CORP. MAMARONECK, NEW YORK PLATE, TIEDOWN
MATERIAL SEE NOTE	MECH. DES.	DATE			
FINISH S113 FUNGUS PROOF	ELECT. DES.	DATE			
S401-451	CHECKED SG	DATE 2/21/69			
	DRAWN LFD	DATE 2.21.67			
NOTICE TO PERSONS RECEIVING THIS DRAWING THE TECHNICAL MATERIEL CORPORATION claims proprietary right in the material disclosed hereon. This drawing is issued in confidence for engineering information only and may not be reproduced or used to manufacture anything shown hereon without permission from THE TECHNICAL MATERIEL CORPORATION to the user. This drawing is loaned for mutual assistance and is subject to recall at any time.				SIZE A	CODE IDENT. NO. 82679
				DWG NO. PX1014	ISSUE Ø
SCALE 1:1			SHEET OF		

APPLICATION			REVISIONS						
QTY	MODEL USED ON	ASS'Y NO.	LTR	DESCRIPTION	DATE	E.M.N.NO	DRAFT	CHKD	APPD
2	TRO-47A		X	EXPERIMENTAL RELEASE	2.23.67	44	WFW	<i>[Signature]</i>	JFB
			Ø	ORIGINAL RELEASE	8/26/69	Ø	W		

- HOLE -

A - SEE NOTES (2 REQ)
 B - 1/4 DIA. (1 REQ)



MOUNT ITEM 1 IN ALL "A" HOLES AS SHOWN

ITEM MOUNTING NOTES

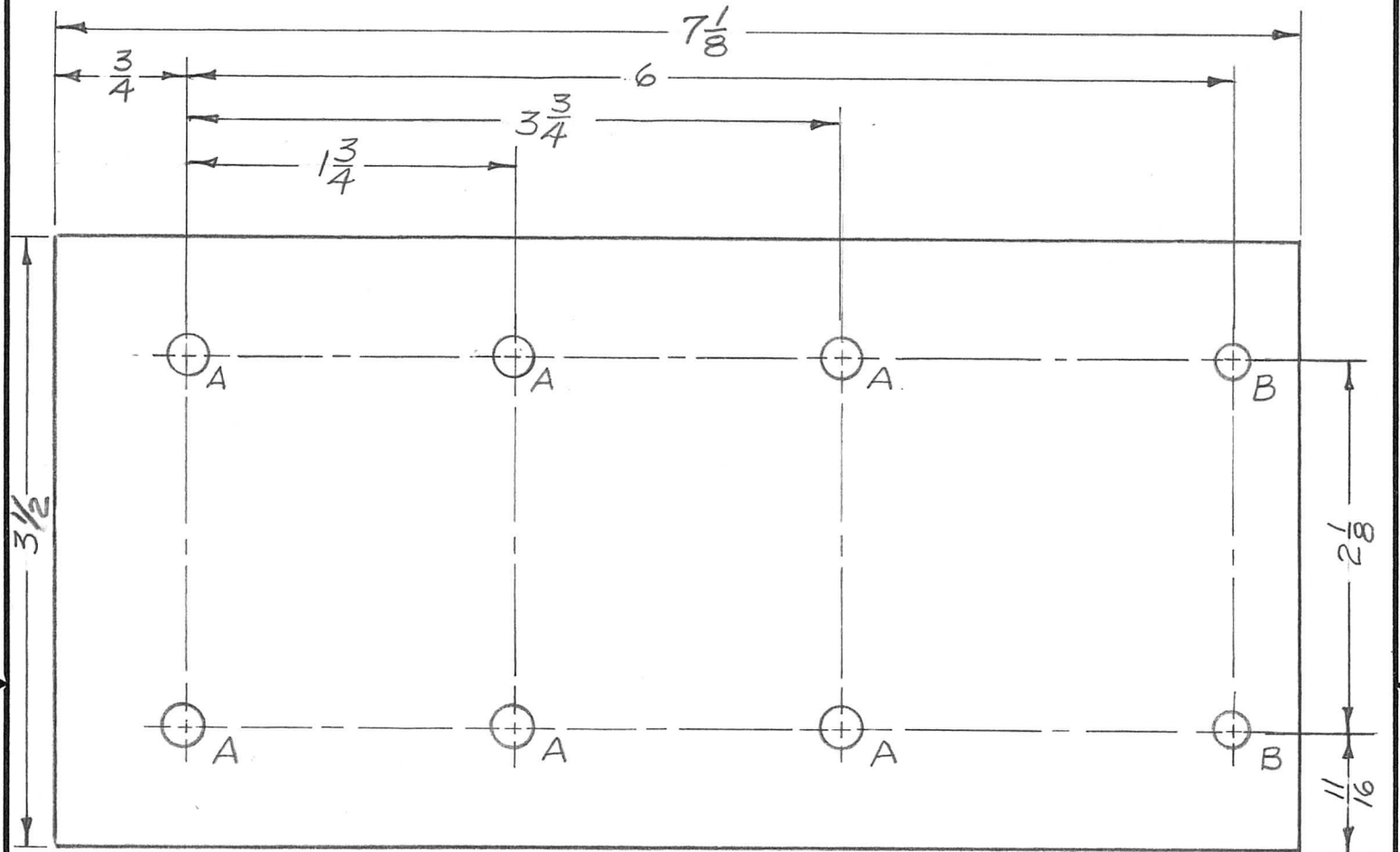
- 1 - DRILL #16 (.174) TO .500 MIN DEPTH
- 2 - 120 DEGREES C'SK TO .20-.23 DIA
- 3 - TAP .360 MIN DEPTH. USE HELI-COIL TAP #2CPA.
- 4 - INSTALL ITEM 1, (3/4 TO 1-1/2 PITCH BELOW SURFACE).
- 5 - BREAK OFF DRIVING TANG

REQ'D	ITEM	PART NUMBER	DESCRIPTION	SYM.
2	1	NT139-SC08-20	SCREW, THREAD INSERT	A

UNLESS OTHERWISE SPECIFIED DIMENSIONS ARE IN INCHES AND INCLUDE CHEMICALLY APPLIED OR PLATED FINISHES		BUTLER LIST OF MATERIAL		
DECIMALS .X ± .05 .XX ± .01 .XXX ± .005	FRACTIONS 1/64 ANGLES 0° -30'	FINAL APPROVAL <i>[Signature]</i>	DATE 8/26/69	THE TECHNICAL MATERIEL CORP. MAMARONECK, NEW YORK <i>BRKT, SUPPORT, CORE</i>
MATERIAL 1/2 THK PHENOLIC, XXXP	MECH. DES.	DATE		
FINISH S113 FUNGUS PROOF.	ELECT. DES.	DATE		
S401-451	CHECKED <i>SG</i>	DATE 2/23/67		
	DRAWN <i>WFW</i>	DATE 2.23.67		

NOTICE TO PERSONS RECEIVING THIS DRAWING THE TECHNICAL MATERIEL CORPORATION claims proprietary right in the material disclosed hereon. This drawing is issued in confidence for engineering information only and may not be reproduced or used to manufacture anything shown hereon without permission from THE TECHNICAL MATERIEL CORPORATION to the user. This drawing is loaned for mutual assistance and is subject to recall at any time.	SIZE A	CODE IDENT. NO. 82679	DWG NO. <i>PX1015</i>	ISSUE Ø
	SCALE 1:1	SHEET 1 OF 1		

APPLICATION			REVISIONS						
QTY	MODEL USED ON	ASS'Y NO.	LTR	DESCRIPTION	DATE	E.M.N.NO	DRAFT	CHKD	APPD
2	BCT-10KA		X	EXP. RELEASE	1/9/68	H	Eng		DB
			Ø	ORIGINAL RELEASE FOR PRODUCTION	4/1/68	Ø	Hg.		MD



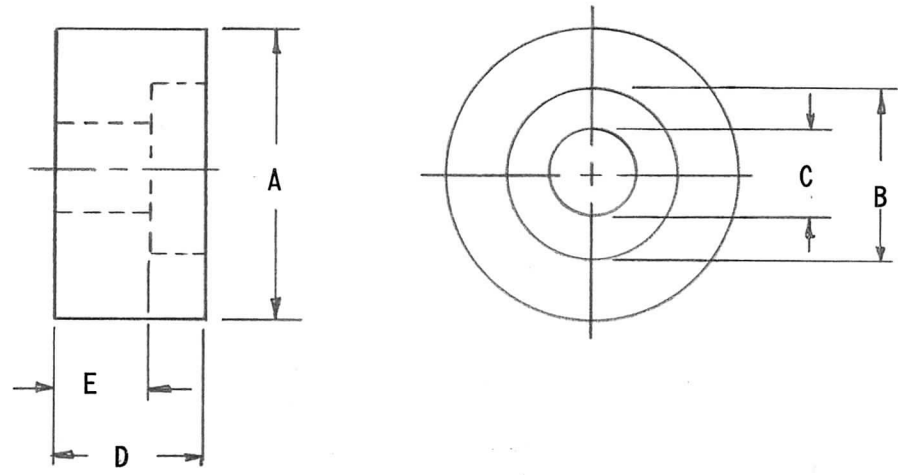
HOLE	DESCRIPTION	REQ.
A	15/64 DIA.	6
B	13/64 DIA.	2

UNLESS OTHERWISE SPECIFIED DIMENSIONS ARE IN INCHES AND INCLUDE CHEMICALLY APPLIED OR PLATED FINISHES DECIMALS .X ± .05 FRACTIONS 1/64 .XX ± .01 TOLS. ANGLES .XXX ± .005 0° -30'	REQ'D	ITEM	PART NUMBER	DESCRIPTION	SYM.	
			F. BUDETTI	LIST OF MATERIAL SK3290-PX1003		
			FINAL APPROVAL <i>DB</i>	DATE 4-2-68	THE TECHNICAL MATERIEL CORP. MAMARONECK, NEW YORK	
			MÉCH. DES. <i>A.P.</i>	DATE 4-2-68		
			ELECT. DES.	DATE	BOARD, MFG. RECT.	
			CHECKED <i>Hg.</i>	DATE 4-1-68		
		DRAWN <i>Eng</i>	DATE 1-9-68			
MATERIAL 1/8 G-10 EPOXY FINISH NATURAL S401-451						

NOTICE TO PERSONS RECEIVING THIS DRAWING THE TECHNICAL MATERIEL CORPORATION claims proprietary right in the material disclosed hereon. This drawing is issued in confidence for engineering information only and may not be reproduced or used to manufacture anything shown hereon without permission from THE TECHNICAL MATERIEL CORPORATION to the user. This drawing is loaned for mutual assistance and is subject to recall at any time.	SIZE	CODE IDENT. NO.	DWG NO.	ISSUE
	A	82679	PX 1017	Ø
	SCALE 1:1	SHEET		OF

APPLICATION			REVISIONS						
QTY	MODEL USED ON	ASS'Y NO.	LTR	DESCRIPTION	DATE	E.M.N.NO	DRAFT	CHKD	APPD
6	BCT-10KA		X1	CHART ADDED	11-22-67	+	Hg.		DB
			Ø	ORIGINAL RELEASE FOR PRODUCTION	4/1/68	Ø	Hg.		JMO

TMC P/N	A	B	C	D	E	MATERIAL	FINISH
PX1028-1	3/4	7/16	7/32	.390	.250	G-10 EPOXY	NATURAL, S113 FUNGUS PROOF

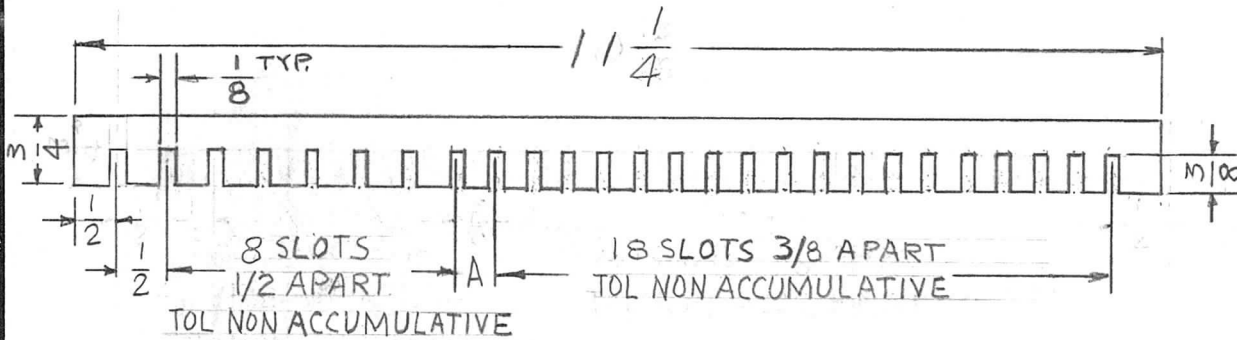


UNLESS OTHERWISE SPECIFIED DIMENSIONS ARE IN INCHES AND INCLUDE CHEMICALLY APPLIED OR PLATED FINISHES		REQ'D	ITEM	PART NUMBER	DESCRIPTION	SYM.
DECIMALS .X ± .05 .XX ± .01 .XXX ± .005 FRACTIONS 1/64 ANGLES 0° .30°		F. BUDETTI		LIST OF MATERIAL	SK3290-PX 051	
MATERIAL G-10 SEE CHART		MECH. DES.	DATE	THE TECHNICAL MATERIEL CORP.		
FINISH NATURAL SEE CHART		ELECT. DES.	DATE	MAMARONECK, NEW YORK		
S401-451		CHECKED	DATE	INSULATOR		
		DRAWN	DATE			

NOTICE TO PERSONS RECEIVING THIS DRAWING THE TECHNICAL MATERIEL CORPORATION claims proprietary right in the material disclosed hereon. This drawing is issued in confidence for engineering information only and may not be reproduced or used to manufacture anything shown hereon without permission from THE TECHNICAL MATERIEL CORPORATION to the user. This drawing is loaned for mutual assistance and is subject to recall at any time.	SIZE	CODE IDENT. NO.	DWG NO.	ISSUE
	A	82679	PX1028	Ø
SCALE	2:1		SHEET	OF

APPLICATION			REVISIONS						
QTY	MODEL USED ON	ASS'Y NO.	LTR	DESCRIPTION	DATE	E.M.N.NO	DRAFT	CHKD	APPD
TEA	BCT-10KA		X	EXP. RELEASE	9.27.67		H.G.	<i>[Signature]</i>	<i>[Signature]</i>
			Ø	ORIG. RELEASE FOR PROD	5.10.68	Ø	R.G.		<i>[Signature]</i>

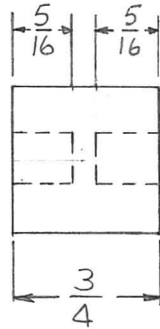
TMC PART NO	A
PX 1032-1	3/8
PX 1032-2	.420
PX 1032-3	.460



UNLESS OTHERWISE SPECIFIED DIMENSIONS ARE IN INCHES AND INCLUDE CHEMICALLY APPLIED OR PLATED FINISHES		REQ'D	ITEM	PART NUMBER	DESCRIPTION	SYM.
DECIMALS .X ± .05 .XX ± .01 .XXX ± .005 FRACTIONS 1/64 ANGLES 0° - 30'		F. BUDETTI LIST OF MATERIAL THE TECHNICAL MATERIEL CORP. MAMARONECK, NEW YORK SPACER, COIL				
MATERIAL 1/4 THK TEFLON TFE		FINAL APPROVAL	<i>[Signature]</i>	DATE	5-10-68	
FINISH NATURAL		MECH. DES.	AVC	DATE		
SAOI-451		ELECT. DES.	AVC	DATE	5-10-68	
		CHECKED	<i>[Signature]</i>	DATE	5-10-68	
		DRAWN	H.G.	DATE	9-27-67	

NOTICE TO PERSONS RECEIVING THIS DRAWING THE TECHNICAL MATERIEL CORPORATION claims proprietary right in the material disclosed hereon. This drawing is issued in confidence for engineering information only and may not be reproduced or used to manufacture anything shown hereon without permission from THE TECHNICAL MATERIEL CORPORATION to the user. This drawing is loaned for mutual assistance and is subject to recall at any time.				SIZE	CODE IDENT. NO.	DWG NO.	ISSUE
				A	82679	PX1032	Ø
				SCALE	1:2	SHEET	OF

APPLICATION			REVISIONS						
QTY	MODEL USED ON	ASS'Y NO.	LTR	DESCRIPTION	DATE	E.M.N.NO	DRAFT	CHKD	APPD
1	TTA-1		X	EXP. RELEASE	1/9/68	+	HE		HR
			Ø	ORIG. RELEASE FOR PROD.	5.1.68	Ø	R.G.		HDO
			A	STEP 3: MIN. CHG TO MAX	8/24/77	20845	GE	CL	CL



① EACH END

PROCEDURE

- 1- DRILL #16 (.174)
- 2- 120° C'SINK .20-.23 DIA.
- 3- TAP. 3/32 MAX. DEPTH.
USE HELI-COIL TAP #2CPA
- 4- INSTALL ITEM 1
- 5- BREAK OFF DRIVING TANG

2	1	NT139-SC08-20	INSERT, SCREW THREAD	
REQ'D	ITEM	PART NUMBER	DESCRIPTION	SYM.
F. BUDETTI		LIST OF MATERIAL SK 3291-004		
MATERIAL 3/4 ROD		FINAL APPROVAL <i>[Signature]</i>	DATE 4-30-68	THE TECHNICAL MATERIEL CORP. MAMARONECK, NEW YORK SPACER, EPOXY
FINISH G-11 EPOXY		MECH. DES. <i>[Signature]</i>	DATE 1/9/68	
S401-451		ELECT. DES.	DATE	
		CHECKED <i>[Signature]</i>	DATE	
		DRAWN <i>[Signature]</i>	DATE 1/9/68	

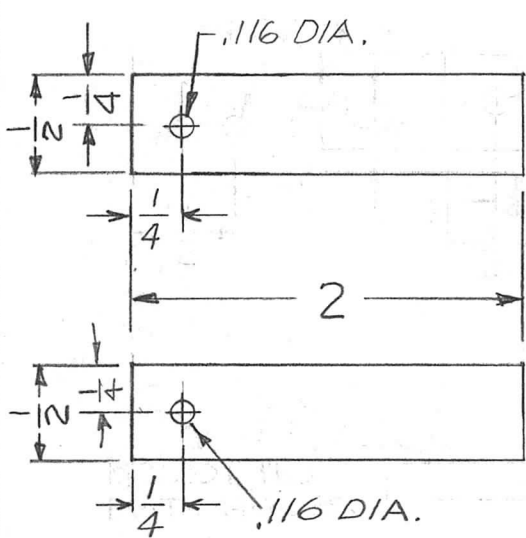
UNLESS OTHERWISE SPECIFIED DIMENSIONS ARE IN INCHES AND INCLUDE CHEMICALLY APPLIED OR PLATED FINISHES

DECIMALS FRACTIONS
.X ± .05 1/64
.XX ± .01 TOLS. ANGLES
.XXX ± .005 0° -30'

NOTICE TO PERSONS RECEIVING THIS DRAWING
THE TECHNICAL MATERIEL CORPORATION claims proprietary right in the material disclosed hereon. This drawing is issued in confidence for engineering information only and may not be reproduced or used to manufacture anything shown hereon without permission from **THE TECHNICAL MATERIEL CORPORATION** to the user. This drawing is loaned for mutual assistance and is subject to recall at any time.

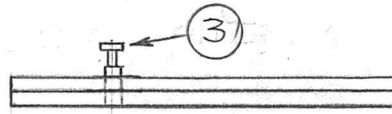
SIZE A	CODE IDENT. NO. 82679	DWG NO. PX1034	ISSUE A
SCALE 1:1		SHEET OF	

APPLICATION			REVISIONS						
QTY	MODEL USED ON	ASS'Y NO.	LTR	DESCRIPTION	DATE	E.M.N.NO	DRAFT	CHKD	APPD
1EA	LPA-2		X	EXP. RELEASE	10-31-67				
			Ø	ORIG. RELEASE FOR PROD.	11-15-67	Ø	R.G.		
			A	COMP. REV.	1-24-68	18732			FB
			B	PART 1 & 2 REVISED	3-15-68	18816			FB



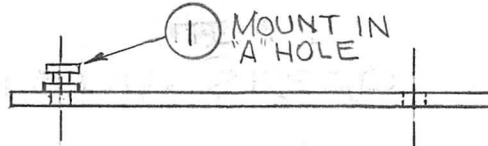
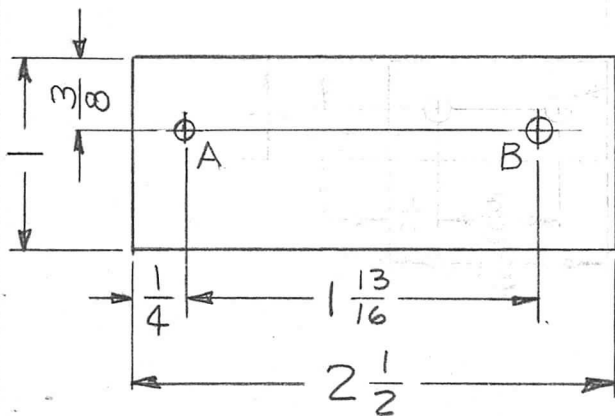
PART 1

PART 2



AFTER MOUNTING ITEM 1 TO PART 1
BOND PART 1 TO PART 2 WITH
ITEM 2

PX1035-1



HOLE	DESCRIPTION	REQ
A	.116 DIA.	1
B	11/64 DIA.	1

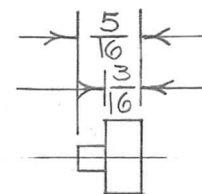
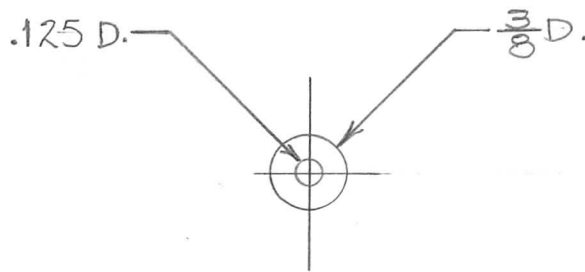
PX1035-2

REQ'D	ITEM	PART NUMBER	DESCRIPTION	SYM.
1	3	TE105-4	TERMINAL, STUD	
X	2	GL125	ADHESIVE-EPOXY	
1	1	TE105-2	TERMINAL, STUD	

UNLESS OTHERWISE SPECIFIED DIMENSIONS ARE IN INCHES AND INCLUDE CHEMICALLY APPLIED OR PLATED FINISHES		F. BUDETTI		LIST OF MATERIAL	
DECIMALS .X ± .05 .XX ± .01 .XXX ± .005	FRACTIONS 1/64 ANGLES 0° .30'	MECH. DES.	DATE	THE TECHNICAL MATERIEL CORP. MAMARONECK, NEW YORK STRIP, MTG. TERMINAL	
MATERIAL 1/16 THK G-10 EPOXY		ELECT. DES.	DATE		
FINISH NATURAL S113 FUNGUS PROOF		CHECKED	DATE		
S401-451		DRAWN	DATE		

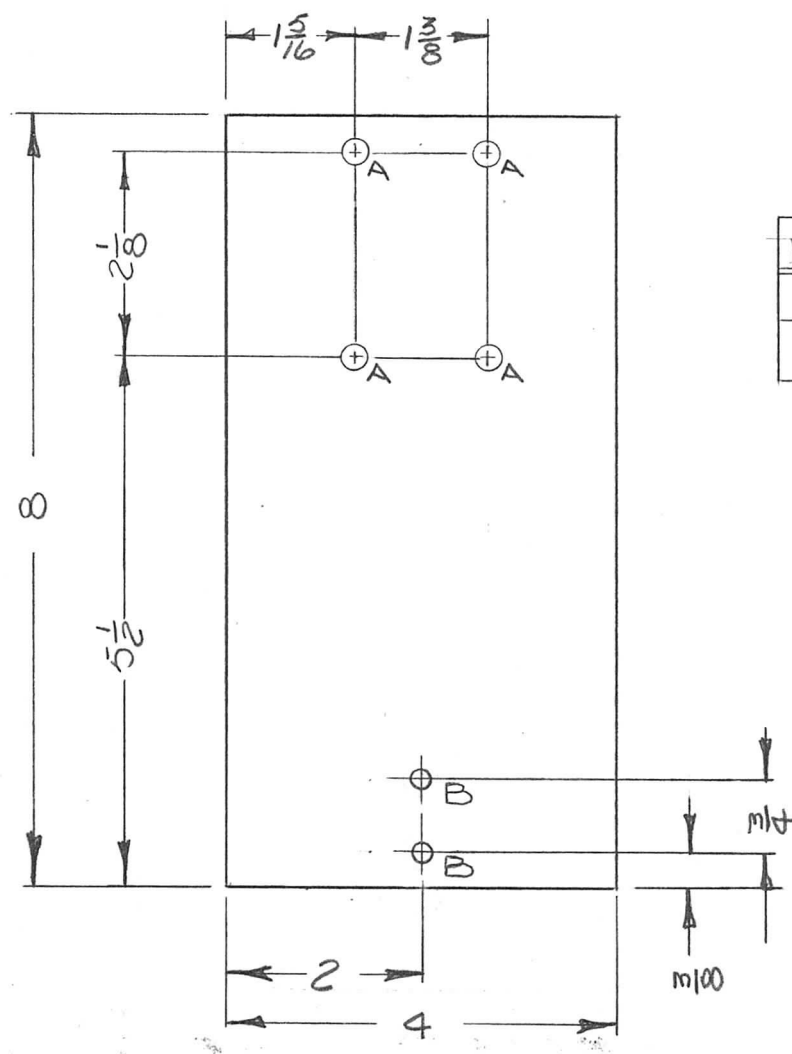
NOTICE TO PERSONS RECEIVING THIS DRAWING				SIZE	CODE IDENT. NO.	DWG NO.	ISSUE
<small>THE TECHNICAL MATERIEL CORPORATION claims proprietary right in the material disclosed herein. This drawing is issued in confidence for engineering information only and may not be reproduced or used to manufacture anything shown hereon without permission from THE TECHNICAL MATERIEL CORPORATION to the user. This drawing is loaned for mutual assistance and is subject to recall at any time.</small>				A	82679	PX1035	B
SCALE 1:1		M/L		SHEET		OF	

REQ. PER UNIT	USED ON			PX 1037 ∅
	MODEL	ASS'Y. NO.	DATE	
6	BCT-10KA	AX680	8-8-67	



							REQ. ITEM	PART NO.	BUDETTI	DESCRIPTION	SYMBOL		
∅	ORIGINAL RELEASE FOR PRODUCTION	4/1/68	∅	H.S.			3/8 ROD		THE TECHNICAL MATERIEL CORP. MAMARONECK, NEW YORK				
X	EXP. RELEASE	1/9/68	#				TEFLON		SPACER, FLUE				
SYM	DESCRIPTION	DATE	CH. NO.	DRAFTS	CHECKER	ENG. APP.	MATERIAL						
UNLESS OTHERWISE SPECIFIED DIMENSIONS ARE IN INCHES AND INCLUDE CHEMICALLY APPLIED OR PLATED FINISHES		SCALE					1:1	TFE		A. PETROCCA			
DECIMALS .X ± .05 .XX ± .01 .XXX ± .005	TOLERANCES	FRACTIONS ± 1/64 ANGLES ± 0° 30'	CODE A	S 401-451			NATURAL		TYPE & TEMPER	HEAT TREAT. SPEC.	DRAWN	CHECKED	FINAL APPROVAL
								FINISH & SPEC. NO.		ELEC. DES. APP.	MECH. DES. APP.	PX 1037 ∅	

APPLICATION			REVISIONS						
QTY	MODEL USED ON	ASS'Y NO.	LTR	DESCRIPTION	DATE	E.M.N.NO	DRAFT	CHKD	APPD
1	GPT 40 KEL		X	EXP RELEASE	10/27/67				
			Ø	ORIG RELEASE FOR PROD	7/11/69		GE		

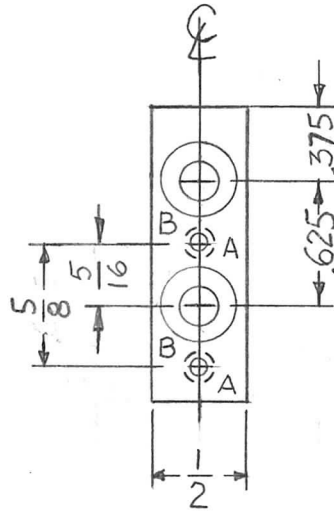
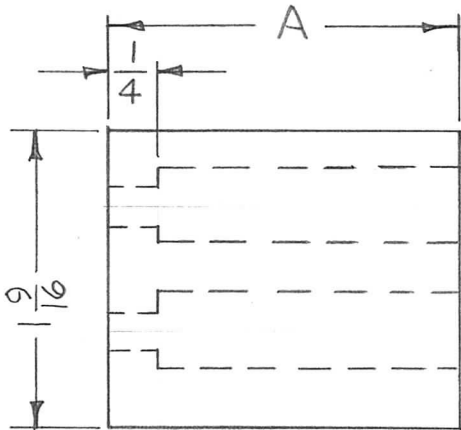


HOLE	DIA	REQ
A	13/64	4
B	3/16	2

UNLESS OTHERWISE SPECIFIED DIMENSIONS ARE IN INCHES AND INCLUDE CHEMICALLY APPLIED OR PLATED FINISHES	REQ'D	ITEM	PART NUMBER	DESCRIPTION	SYM.
DECIMALS: .X ± .05, .XX ± .01, .XXX ± .005 FRACTIONS: 1/64 TOLS.: ANGLES 0° - 30°		F. BUDETTI		LIST OF MATERIAL	
MATERIAL 1/4 THK 1/4 G-10 EPOXY		FINAL APPROVAL	DATE 7/11/69	THE TECHNICAL MATERIEL CORP. MAMARONECK, NEW YORK PLATE, SWITCH	
FINISH NATURAL 5113 FUNGUS PROOF		MECH. DES.	DATE 7/11/69		
S401-451		ELECT. DES.	DATE		
		CHECKED	DATE 10/27/67		
		DRAWN	DATE 10/27/67		

NOTICE TO PERSONS RECEIVING THIS DRAWING THE TECHNICAL MATERIEL CORPORATION claims proprietary right in the material disclosed hereon. This drawing is issued in confidence for engineering information only and may not be reproduced or used to manufacture anything shown hereon without permission from THE TECHNICAL MATERIEL CORPORATION to the user. This drawing is loaned for mutual assistance and is subject to recall at any time.	SIZE	CODE IDENT. NO.	DWG NO.	ISSUE
	A	82679	PX1038	Ø
SCALE 1:2		SHEET		OF

APPLICATION			REVISIONS						
QTY	MODEL USED ON	ASS'Y NO.	LTR	DESCRIPTION	DATE	E.M.N.NO	DRAFT	CHKD	APPD
SEE CHART	GPT-40KEL		X	EXP. RELEASE	11-2-67		HY		
			Ø	ORIG. RELEASE FOR PROD.	7/11/69		GE		



TMC PART NO	A	REQ
PX1039 -1	.790	2
PX1039 -2	1.400	1

HOLE	DESCRIPTION	REQ
A	DR & TAP FOR 6-32	2
B	DR 3/16 DIA. C'BORE 3/8 DIA	2

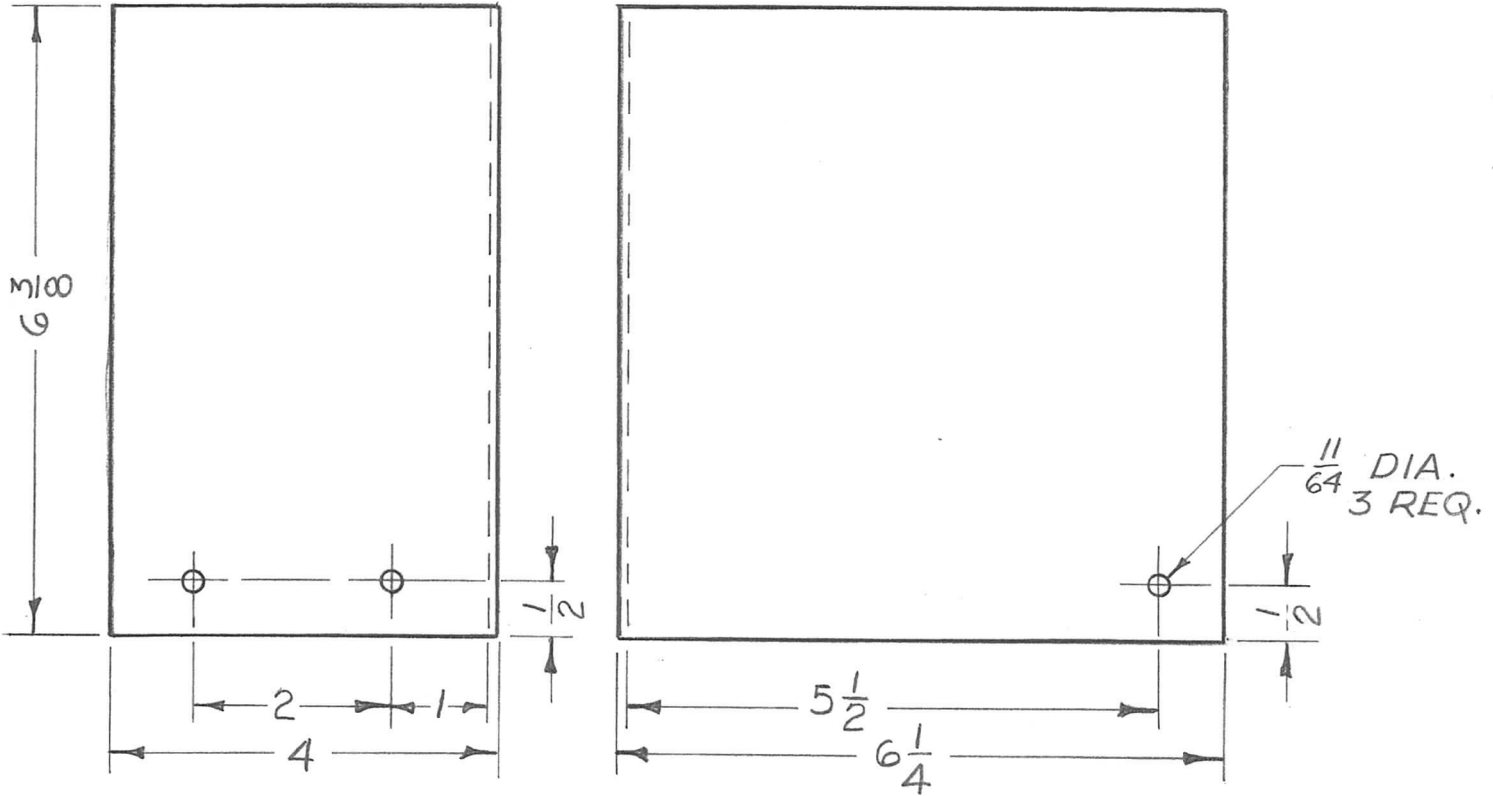
UNLESS OTHERWISE SPECIFIED DIMENSIONS ARE IN INCHES AND INCLUDE CHEMICALLY APPLIED OR PLATED FINISHES

REQ'D	ITEM	PART NUMBER	DESCRIPTION	SYM.
F. BUDETTI				
LIST OF MATERIAL				
THE TECHNICAL MATERIEL CORP.				
MAMARONECK, NEW YORK				
HOLDER CONTACT				
DECIMALS	FRACTIONS	DATE		
.X ± .05	1/64	7/11/69		
.XX ± .01	TOLS. ANGLES	DATE		
.XXX ± .005	0° .30'	7/11/69		
MATERIAL G-10 EPOXY	MECH. DES.	DATE		
FINISH NATURAL S113 FUNGUS PROOF	ELECT. DES.	DATE		
S401-451	CHECKED SG	DATE 11-2-67		
	DRAWN HY.	DATE 11-2-67		

NOTICE TO PERSONS RECEIVING THIS DRAWING
 THE TECHNICAL MATERIEL CORPORATION claims proprietary right in the material disclosed hereon. This drawing is issued in confidence for engineering information only and may not be reproduced or used to manufacture anything shown hereon without permission from THE TECHNICAL MATERIEL CORPORATION to the user. This drawing is loaned for mutual assistance and is subject to recall at any time.

SIZE	CODE IDENT. NO.	DWG NO.	ISSUE
A	82679	PX1039	Ø
SCALE 1:1	SHEET		OF

APPLICATION			REVISIONS						
QTY	MODEL USED ON	ASS'Y NO.	LTR	DESCRIPTION	DATE	E.M.N.NO	DRAFT	CHKD	APPD
1	BCT-10KA		X	EXP. RELEASE	11/10/67		Emp		DB
			Ø	ORIGINAL RELEASE FOR PRODUCTION	4/1/68	Ø	H.G.		H.G.



UNLESS OTHERWISE SPECIFIED:

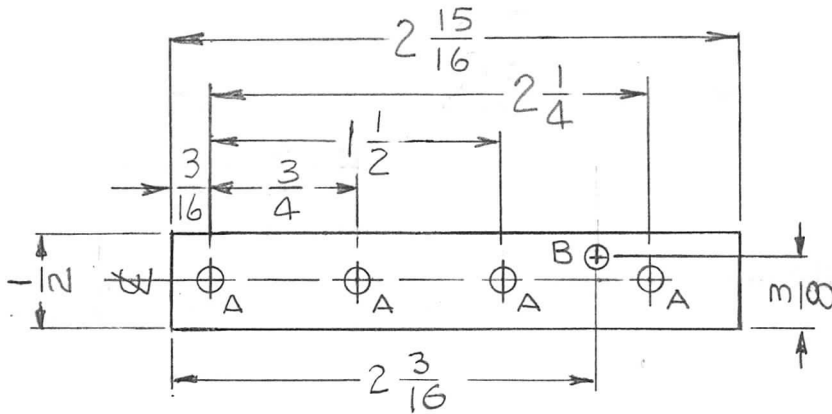
1. USE MATERIAL THICKNESS FOR MAXIMUM RADIUS ON ALL BENDS
2. ALL ANGULAR BENDS 90 DEGREES
3. REMOVE ALL BURRS AND SHARP EDGES

UNLESS OTHERWISE SPECIFIED DIMENSIONS ARE IN INCHES AND INCLUDE CHEMICALLY APPLIED OR PLATED FINISHES		REQ'D	ITEM	PART NUMBER	DESCRIPTION	SYM.
DECIMALS .X ± .05 .XX ± .01 .XXX ± .005	FRACTIONS 1/64 ANGLES 0°-30'	F. BUDETTI LIST OF MATERIAL				
MATERIAL 3 LAYERS FIBERGLASS		FINAL APPROVAL	DATE	THE TECHNICAL MATERIEL CORP.		
FINISH GREY EPOXY PAINT		MECH. DES.	DATE	MAMARONECK, NEW YORK		
S401-451		ELECT. DES.	DATE	COVER, PROTECTIVE		
		CHECKED	DATE			
		DRAWN	DATE			

NOTICE TO PERSONS RECEIVING THIS DRAWING
 THE TECHNICAL MATERIEL CORPORATION claims proprietary right in the material disclosed hereon. This drawing is issued in confidence for engineering information only and may not be reproduced or used to manufacture anything shown hereon without permission from THE TECHNICAL MATERIEL CORPORATION to the user. This drawing is loaned for mutual assistance and is subject to recall at any time.

SIZE A	CODE IDENT. NO. 82679	DWG NO. PX 1040	ISSUE Ø
SCALE		SHEET OF	

APPLICATION			REVISIONS						
QTY	MODEL USED ON	ASS'Y NO.	LTR	DESCRIPTION	DATE	E.M.N.NO	DRAFT	CHKD	APPD
2	BCT-10KA	A4651	X	EXP. RELEASE	1-2-68	-	H.S.		
			X1	ONE "B" HOLE ADD.	4-4-68		G.D.L.		
			Ø	ORIG. RELEASE FOR PROD.	4-5-68	Ø	R.G.		

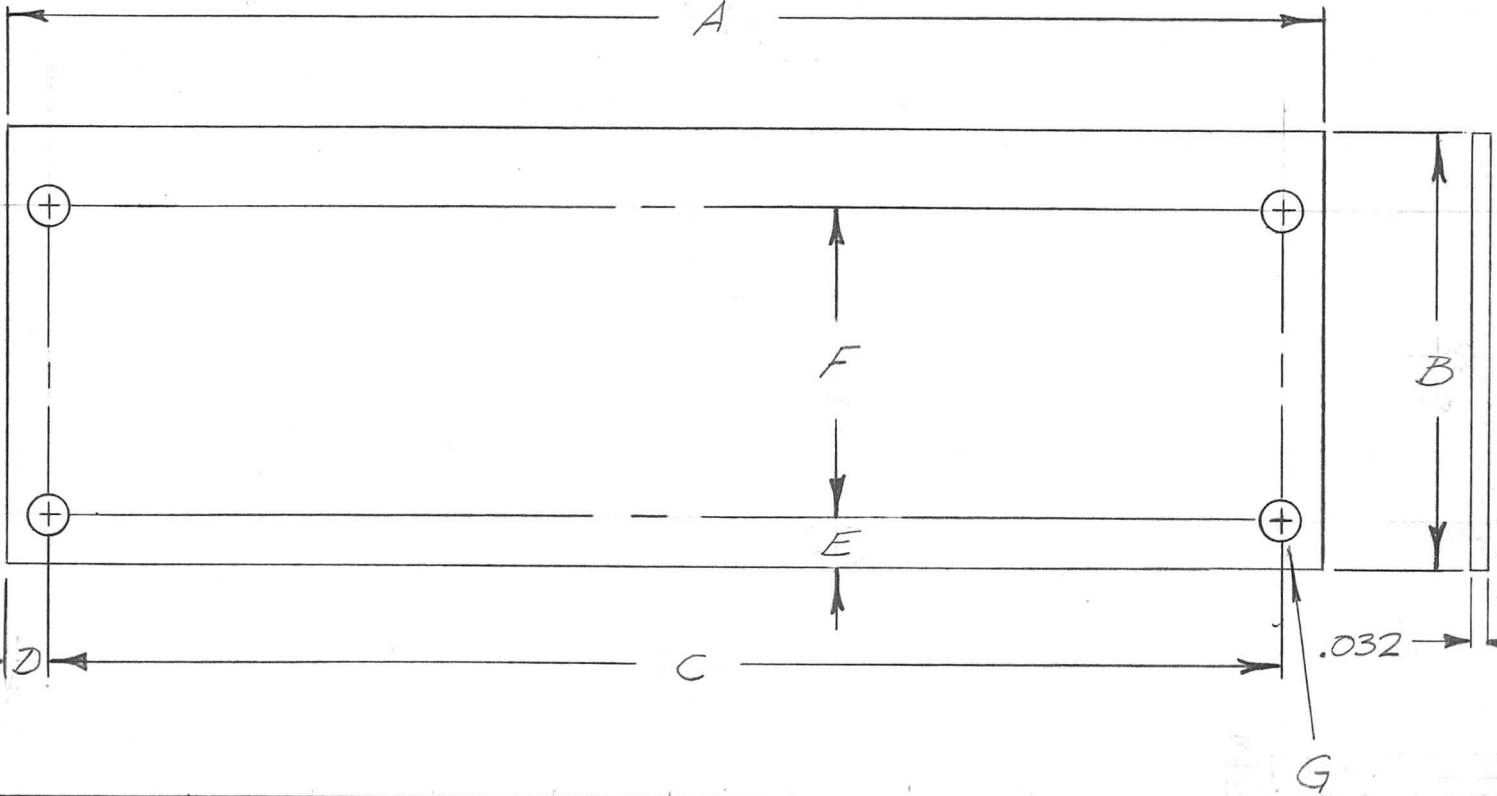


HOLES:
 A - 1/8 DIA. (4 REQ)
 B - 7/64 DIA (1 REQ.)

NOTE:
 FUNGUS PROOFING PER
 TMC SPECIFICATION S-113

UNLESS OTHERWISE SPECIFIED DIMENSIONS ARE IN INCHES AND INCLUDE CHEMICALLY APPLIED OR PLATED FINISHES		REQ'D	ITEM	PART NUMBER	DESCRIPTION	SYM.		
DECIMALS: .X ± .05, .XX ± .01, .XXX ± .005 FRACTIONS: 1/64 TOLS.: ANGLES 0° - 30°		F. BUDETTI LIST OF MATERIAL						
MATERIAL 1/8 THICK XXXP PHENOLIC		FINAL APPROVAL <i>[Signature]</i>		DATE 4-5-68		THE TECHNICAL MATERIEL CORP. MAMARONECK, NEW YORK SUPPORT, LAMP		
FINISH SEE NOTE		MECH. DES. <i>[Signature]</i>		DATE				
S401-451		ELECT. DES. <i>[Signature]</i>		DATE				
		CHECKED <i>[Signature]</i>		DATE 4-5-68				
		DRAWN <i>[Signature]</i>		DATE 1-2-68				
NOTICE TO PERSONS RECEIVING THIS DRAWING THE TECHNICAL MATERIEL CORPORATION claims proprietary right in the material disclosed hereon. This drawing is issued in confidence for engineering information only and may not be reproduced or used to manufacture anything shown hereon without permission from THE TECHNICAL MATERIEL CORPORATION to the user. This drawing is loaned for mutual assistance and is subject to recall at any time.					SIZE A	CODE IDENT. NO. 82679	DWG NO. PX 1047	ISSUE Ø
SCALE				SHEET		OF		

APPLICATION			REVISIONS						
QTY	MODEL USED ON	ASS'Y NO.	LTR	DESCRIPTION	DATE	E.M.N.NO	DRAFT	CHKD	APPD
1	HFRR-4		X	EXP. RELEASE	1-18-68		<i>[Signature]</i>	<i>[Signature]</i>	
1	RTIH-3		Ø	ORIG. RELEASE FOR PROD.	11-6-68	Ø	R.G.		<i>[Signature]</i>
			A	REVISED & UPDATED	8-11-69	19518	GE	<i>[Signature]</i>	EAM



TMC P/N	A	B	C	D	E	F	G
PX1048	6 13/16	2 1/8	6 13/32	13/64	17/64	1 19/32	3/16
PX1048-2	7 5/8	1 3/8	7 1/4	3/16	1/4	7/8	1/4

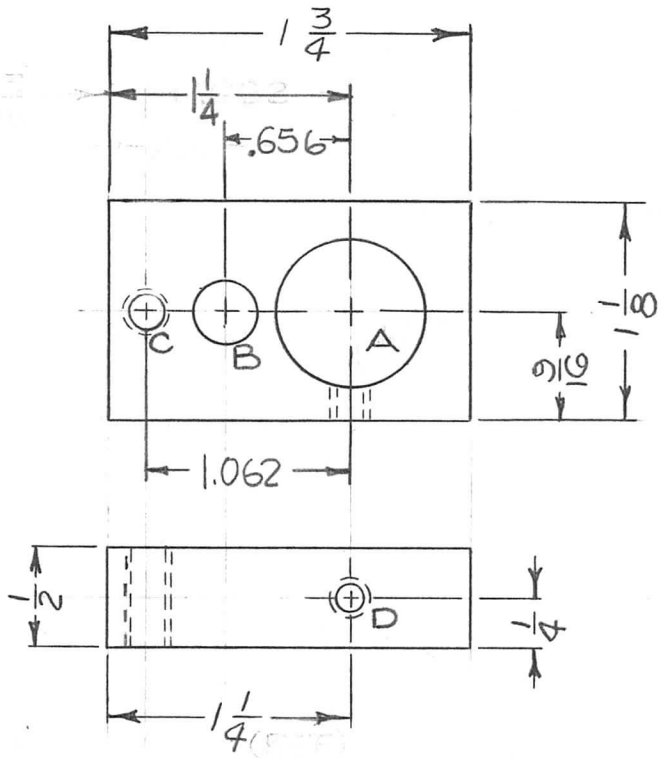
S401-174 (HACP 24 POLAROID)

<small>UNLESS OTHERWISE SPECIFIED DIMENSIONS ARE IN INCHES AND INCLUDE CHEMICALLY APPLIED OR PLATED FINISHES</small> <small>DECIMALS: .X ± .05, .XX ± .01, .XXX ± .005</small> <small>FRACTIONS: 1/64, ANGLES: 0° - 30'</small>	REQ'D	ITEM	PART NUMBER	DESCRIPTION	SYM.	
			HOGAN	LIST OF MATERIALS K3252-003-60 X		
			MECH. DES. <i>M ZETENA</i>	DATE <i>11/6/68</i>	THE TECHNICAL MATERIEL CORP. MAMARONECK, NEW YORK	
			ELECT. DES.	DATE	LENS-COUNTER	
MATERIAL AS NOTED		CHECKED <i>SG</i>	DATE <i>4/19/68</i>			
FINISH NONE		DRAWN <i>[Signature]</i>	DATE <i>1-18-68</i>			
S401-451						

<small>NOTICE TO PERSONS RECEIVING THIS DRAWING</small> <small>THE TECHNICAL MATERIEL CORPORATION claims proprietary right in the material disclosed hereon. This drawing is issued in confidence for engineering information only and may not be reproduced or used to manufacture anything shown hereon without permission from THE TECHNICAL MATERIEL CORPORATION to the user. This drawing is loaned for mutual assistance and is subject to recall at any time.</small>	SIZE	CODE IDENT. NO.	DWG NO.	ISSUE
	A	82679	PX1048	A
	SCALE 1:1	SHEET		OF

APPLICATION			REVISIONS							
QTY	MODEL USED ON	ASS'Y NO.	LTR	DESCRIPTION	DATE	E.M.N.NO	DRAFT	CHKD	APPD	
1	HFRR-4		X	EXP. RELEASE	11-8-68					
			Ø	ORIG. RELEASE FOR PROD.	11-6-68	Ø	R.G.		J.W.	

MATERIAL
 CLEVERLY PHENOLIC

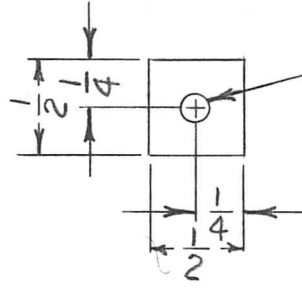
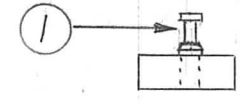


HOLE DESCR

- A .7500^{+.0005}/_{-.0000} DIA. (1 REQ)
- B .3125^{+.0005}/_{-.0000} DIA. (1 REQ)
- C NO. 29 (.1360) DR & TAP #8-32 NC-2B (1 REQ)
- D NO. 43 (.0890) DR & TAP #4-40 (1 REQ)

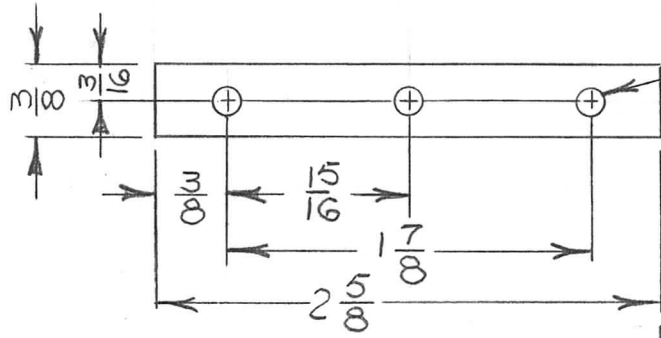
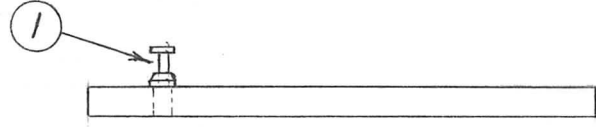
UNLESS OTHERWISE SPECIFIED DIMENSIONS ARE IN INCHES AND INCLUDE CHEMICALLY APPLIED OR PLATED FINISHES		REQ'D	ITEM	PART NUMBER	DESCRIPTION	SYM.
DECIMALS .X ± .05 .XX ± .01 .XXX ± .005 FRACTIONS 1/64 TOLS. ANGLES 0° - 30°		HOGAN LIST OF MATERIALS K3252-003-30 X2 THE TECHNICAL MATERIEL CORP. MAMARONECK, NEW YORK BLOCK, ALIGNMENT, OSC				
MATERIAL LINEN BASE XXXP PHENOLIC		MECH. DES.		DATE	FINAL APPROVAL <i>S.M.</i> 11/6/68 MECH. DES. M. ZEINA	
FINISH NATURAL S113 FUNGUS PROOF S401-451		ELECT. DES.		DATE	CHECKED <i>[Signature]</i> 1/19/68 DRAWN <i>[Signature]</i> 1-18-68	
NOTICE TO PERSONS RECEIVING THIS DRAWING THE TECHNICAL MATERIEL CORPORATION claims proprietary right in the material disclosed herein. This drawing is issued in confidence for engineering information only and may not be reproduced or used to manufacture anything shown hereon without permission from THE TECHNICAL MATERIEL CORPORATION to the user. This drawing is loaned for mutual assistance and is subject to recall at any time.				SIZE	CODE IDENT. NO.	ISSUE
				A	82679	Ø
				SCALE 1:1	SHEET	OF

APPLICATION			REVISIONS							
QTY	MODEL USED ON	ASS'Y NO.	LTR	DESCRIPTION	DATE	E.M.N.NO	DRAFT	CHKD	APPD	
1EA	BCT-10KA		X	EXP. RELEASE	1-10-68					
			Ø	ORIGINAL RELEASE FOR PRODUCTION	4/1/68	Ø				



.116 DIA
 PX1051-1 AS SHOWN
 PX1051-2 NO HOLES

MOUNT IN
 3 HOLES



.116 DIA (3 REQ)
 PX1051-3 AS SHOWN
 PX1051-4 NO HOLES

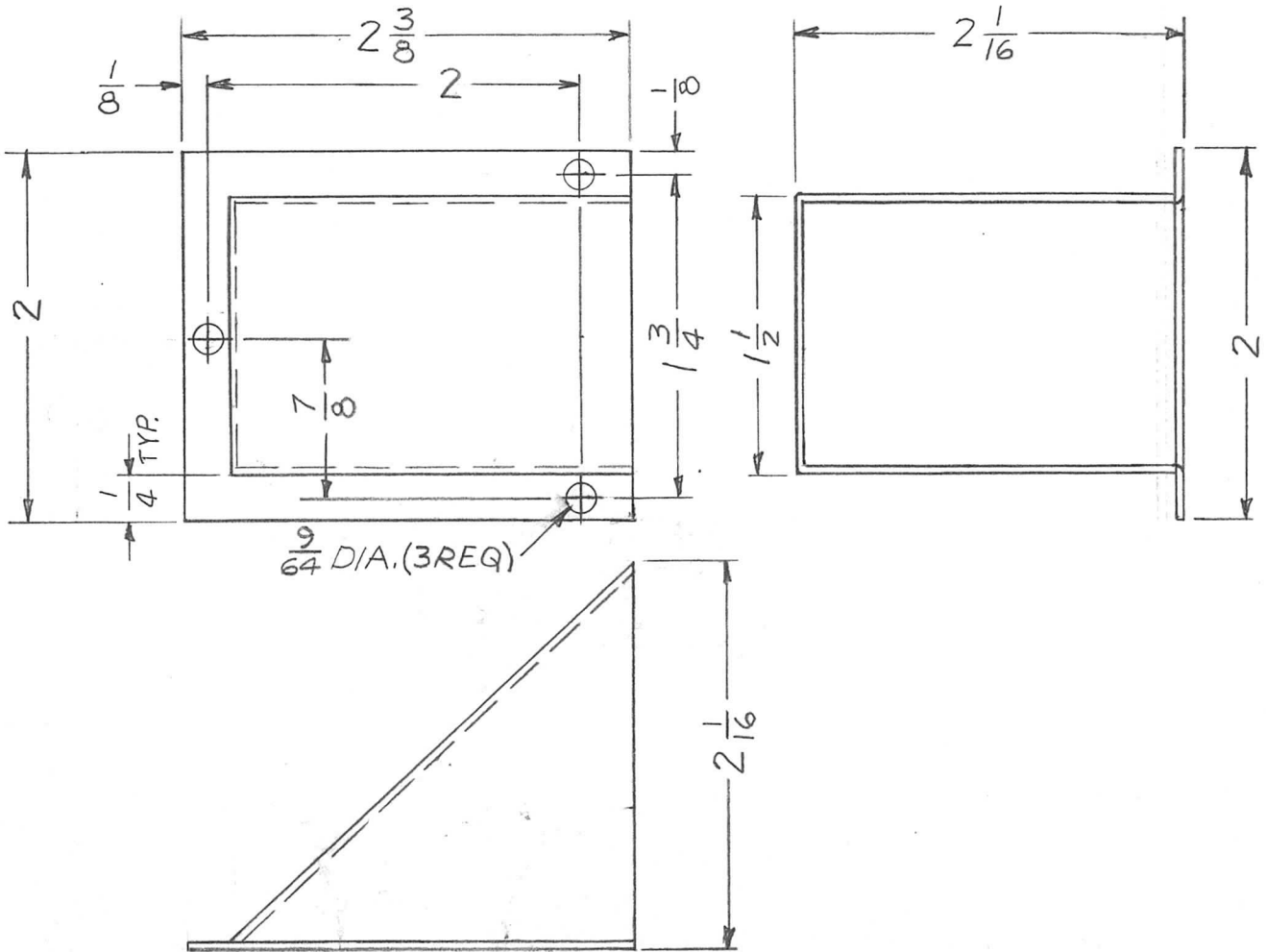
4	1	TE 105-2	TERMINAL, LUG	-
REQ'D	ITEM	PART NUMBER	DESCRIPTION	SYM.

UNLESS OTHERWISE SPECIFIED DIMENSIONS ARE IN INCHES AND INCLUDE CHEMICALLY APPLIED OR PLATED FINISHES		F. BODETTI			LIST OF MATERIAL	
DECIMALS .X ± .05 .XX ± .01 .XXX ± .005	FRACTIONS 1/64 ANGLES 0° - 30°	FINAL APPROVAL	DATE	THE TECHNICAL MATERIEL CORP. MAMARONECK, NEW YORK STRIP, MTG. TERMINAL		
MATERIAL 1/16 THK G-10 EPOXY		MECH. DES.	DATE			
FINISH NATURAL S113 FUNGUS PROOF		ELECT. DES.	DATE			
S401-451		CHECKED	DATE			
		DRAWN	DATE			

NOTICE TO PERSONS RECEIVING THIS DRAWING
 THE TECHNICAL MATERIEL CORPORATION claims proprietary right in the material disclosed hereon. This drawing is issued in confidence for engineering information only and may not be reproduced or used to manufacture anything shown hereon without permission from THE TECHNICAL MATERIEL CORPORATION to the user. This drawing is loaned for mutual assistance and is subject to recall at any time.

SIZE	CODE IDENT. NO.	DWG NO.	ISSUE
A	82679	PX1051	Ø
SCALE	SHEET		OF

APPLICATION			REVISIONS					
QTY	MODEL USED ON	ASS'Y NO.	LTR	DESCRIPTION	DATE	E.M.N.NO	DRAFT	CHK
1	BCT-10KA	AX683	X	EXP. RELEASE	2.7.68	+	HS.	///
			Ø	ORIGINAL RELEASE FOR PRODUCTION	4/1/68	Ø	HS.	HS.



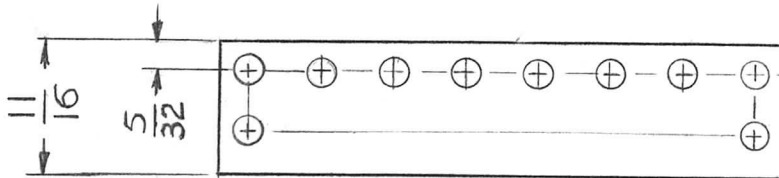
UNLESS OTHERWISE SPECIFIED DIMENSIONS ARE IN INCHES AND INCLUDE CHEMICALLY APPLIED OR PLATED FINISHES

REQ'D	ITEM	PART NUMBER	DESCRIPTION	SYM.
LIST OF MATERIAL				
THE TECHNICAL MATERIEL CORP.				
MAMARONECK, NEW YORK				
FLUE, AIR				
DECIMALS .X ± .05 .XX ± .01 .XXX ± .005		FRACTIONS 1/64 ANGLES 0° - 30°		
MATERIAL 2 LAYERS FIBERGLASS		MECH. DES. <i>AP</i>	DATE 4-2-68	
FINISH GREY EPOXY PAINT		ELECT. DES.	DATE	
S401-451		CHECKED <i>HS</i>	DATE	
		DRAWN <i>HS</i>	DATE 2.7.68	

NOTICE TO PERSONS RECEIVING THIS DRAWING
 THE TECHNICAL MATERIEL CORPORATION claims proprietary right in the material disclosed hereon. This drawing is issued in confidence for engineering information only and may not be reproduced or used to manufacture anything shown hereon without permission from THE TECHNICAL MATERIEL CORPORATION to the user. This drawing is loaned for mutual assistance and is subject to recall at any time.

SIZE A	CODE IDENT. NO. 82679	DWG NO. PX1052	ISSUE Ø
SCALE 1:1	SHEET		OF

APPLICATION			REVISIONS						
QTY	MODEL USED ON	ASS'Y NO.	LTR	DESCRIPTION	DATE	E.M.N.NO	DRAFT	CHKD	APPD
3	SME-6		X	EXP. RELEASE	3-26-68		G.D.L	<i>[Signature]</i>	<i>[Signature]</i>
3	MMX(-)		Ø	ORIG RELEASE FOR PROD.	7-22-68		C.V	<i>[Signature]</i>	<i>[Signature]</i>
3	LFE-1								

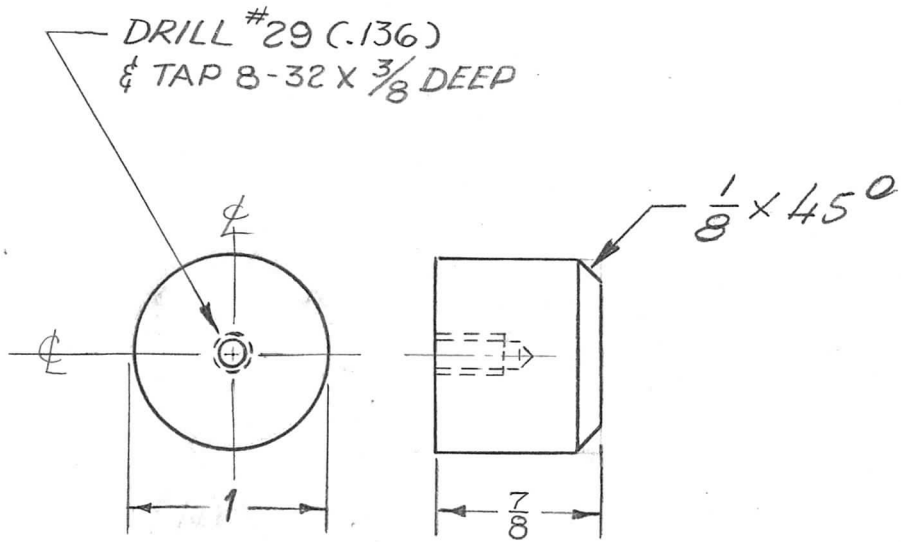


PX 337-6 MODIFIED

UNLESS OTHERWISE SPECIFIED DIMENSIONS ARE IN INCHES AND INCLUDE CHEMICALLY APPLIED OR PLATED FINISHES		REQ'D	ITEM	PART NUMBER	DESCRIPTION	SYM.
DECIMALS: .X ± .05, .XX ± .01, .XXX ± .005 FRACTIONS: 1/64 TOLS.: ANGLES 0°-30°		O. POSE LIST OF MATERIAL				
MATERIAL SEE PX337-6		MECH. DES. <i>[Signature]</i>		DATE 3/4/68		THE TECHNICAL MATERIEL CORP. MAMARONECK, NEW YORK INSULATOR, TERMINAL BOARD
FINISH SEE PX337-6		ELECT. DES. <i>[Signature]</i>		DATE 7-22-68		
S401-451		DRAWN G.D.L		DATE 3-26-68		

NOTICE TO PERSONS RECEIVING THIS DRAWING THE TECHNICAL MATERIEL CORPORATION claims proprietary right in the material disclosed hereon. This drawing is issued in confidence for engineering information only and may not be reproduced or used to manufacture anything shown hereon without permission from THE TECHNICAL MATERIEL CORPORATION to the user. This drawing is loaned for mutual assistance and is subject to recall at any time.				SIZE A	CODE IDENT. NO. 82679	DWG NO. PX 1054	ISSUE Ø
SCALE 1:1		SHEET 451		OF			

APPLICATION			REVISIONS						
QTY	MODEL USED ON	ASS'Y NO.	LTR	DESCRIPTION	DATE	E.M.N.NO	DRAFT	CHKD	APPD
4	BCT-10 KA	A2333	X	EXPERIMENTAL RELEASE	12/4/67	#	Eng	My	020
			Ø	ORIG. RELEASE FOR PROD.	5-29-68		R/S		WDe
			A	1/8 x 45° ADD.	3/12/70	19786	KL + NP		FB MS

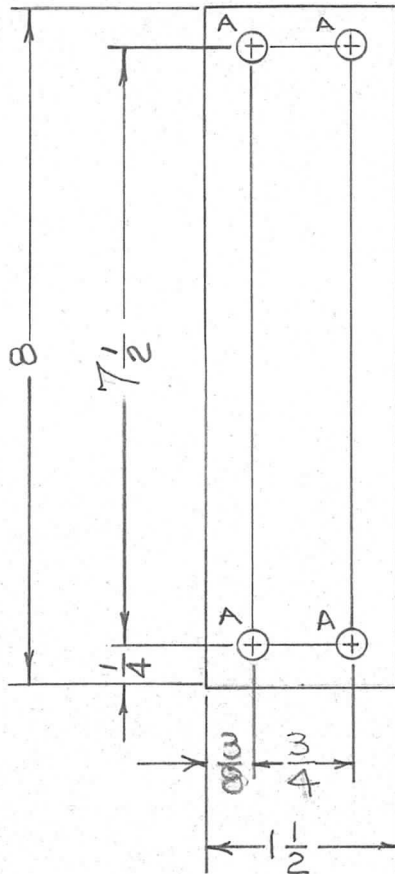


UNLESS OTHERWISE SPECIFIED DIMENSIONS ARE IN INCHES AND INCLUDE CHEMICALLY APPLIED OR PLATED FINISHES		REQ'D	ITEM	PART NUMBER	DESCRIPTION	SYM.		
		F. BUDETTI			LIST OF MATERIAL			
DECIMALS FRACTIONS .X ± .05 1/64 .XX ± .01 TOLS. ANGLES .XXX ± .005 0° .30'		FINAL APPROVAL		DATE	THE TECHNICAL MATERIEL CORP. MAMARONECK, NEW YORK INSULATOR			
MATERIAL		MECH. DES.		DATE				
FINISH		ELECT. DES.		DATE				
S401-451		CHECKED		DATE				
		DRAWN		DATE				
NOTICE TO PERSONS RECEIVING THIS DRAWING THE TECHNICAL MATERIEL CORPORATION claims proprietary right in the material disclosed hereon. This drawing is issued in confidence for engineering information only and may not be reproduced or used to manufacture anything shown hereon without permission from THE TECHNICAL MATERIEL CORPORATION to the user. This drawing is loaned for mutual assistance and is subject to recall at any time.					SIZE	CODE IDENT. NO.	DWG NO.	ISSUE
					A	82679	PX1055	A
					SCALE	1:1	SHEET	OF

APPLICATION

REVISIONS

QTY	MODEL USED ON	ASS'Y NO.	LTR	DESCRIPTION	DATE	E.M.N.NO	DRAFT	CHKD	APPD
1	BCTIOKA	AX681	X	EXP. RELEASE	9-23-68		A.P.		
			Ø	ORIG. RELEASE FOR PROD.	9-26-68	Ø	R.G.		<i>J.We</i>

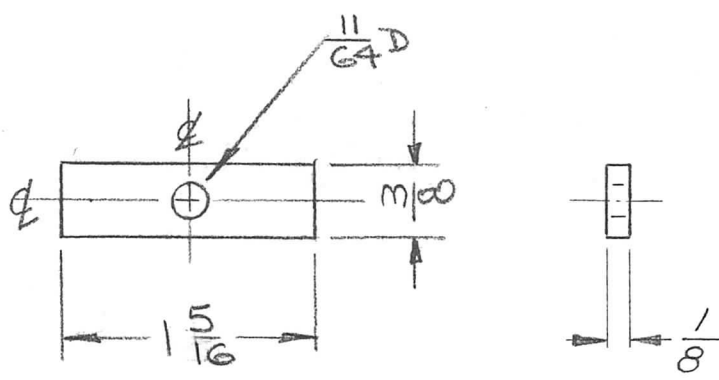


HOLE	DESCRIPTION	REQ.
A	15/64 DIA.	4

MARK TMC PART NUMBER
1/8 HIGH GOTHIC WITH LATEST
REVISION LETTER ON REAR

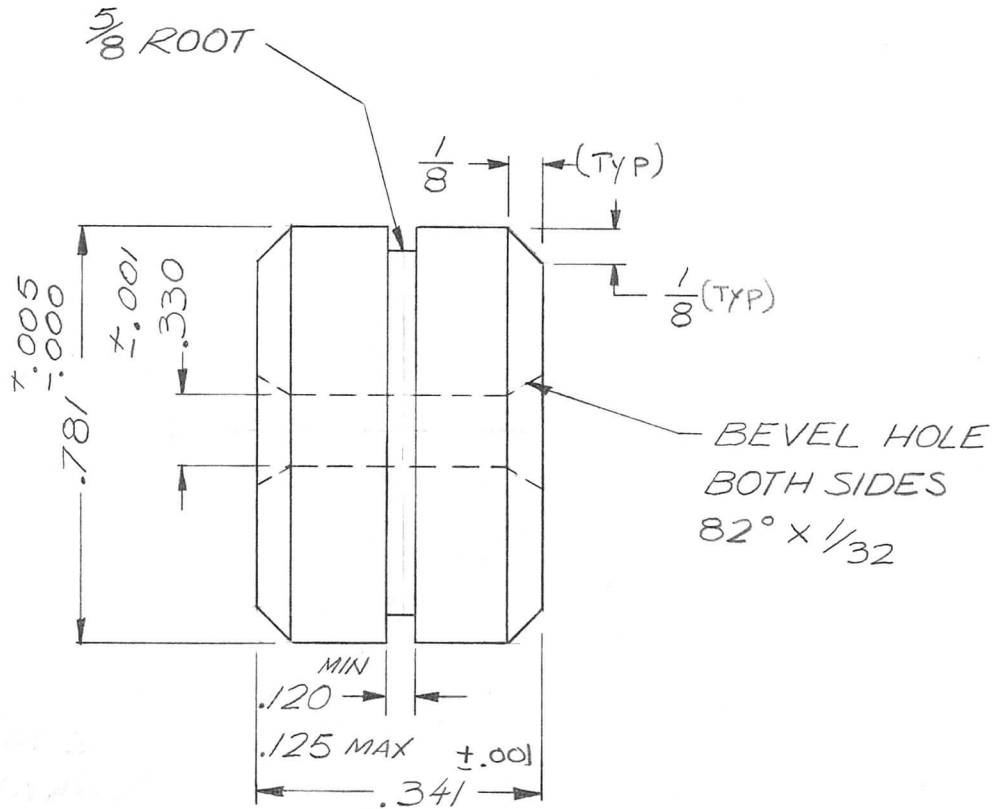
UNLESS OTHERWISE SPECIFIED DIMENSIONS ARE IN INCHES AND INCLUDE CHEMICALLY APPLIED OR PLATED FINISHES	REQ'D	ITEM	PART NUMBER	DESCRIPTION	SYM.								
<table border="0"> <tr> <td>DECIMALS</td> <td>FRACTIONS</td> </tr> <tr> <td>.X ± .05</td> <td>1/64</td> </tr> <tr> <td>.XX ± .01</td> <td>TOLS. ANGLES</td> </tr> <tr> <td>.XXX ± .005</td> <td>0° -30'</td> </tr> </table>	DECIMALS	FRACTIONS	.X ± .05	1/64	.XX ± .01	TOLS. ANGLES	.XXX ± .005	0° -30'	LIST OF MATERIAL				
DECIMALS	FRACTIONS												
.X ± .05	1/64												
.XX ± .01	TOLS. ANGLES												
.XXX ± .005	0° -30'												
MATERIAL XXXP 1/4 PHENOLIC	F. BUDETTI		THE TECHNICAL MATERIEL CORP.										
FINISH NATURAL	MECH. DES.	DATE	MAMARONECK, NEW YORK										
	ELECT. DES.	DATE	INSULATOR (AC. INPUT)										
	CHECKED	DATE											
	DRAWN	DATE											
NOTICE TO PERSONS RECEIVING THIS DRAWING THE TECHNICAL MATERIEL CORPORATION claims proprietary right in the material disclosed hereon. This drawing is issued in confidence for engineering information only and may not be reproduced or used to manufacture anything shown hereon without permission from THE TECHNICAL MATERIEL CORPORATION to the user. This drawing is loaned for mutual assistance and is subject to recall at any time.				SIZE	ISSUE								
				A	Ø								
				82679	PX1060								
				SCALE	SHEET OF								

APPLICATION			REVISIONS						
QTY	MODEL USED ON	ASS'Y NO.	LTR	DESCRIPTION	DATE	E.M.N.NO	DRAFT	CHKD	APPD
1	MTR()150		X	EXPERIMENTAL REL	3/26/69	X	JA	JDe	
			Ø	ORIG RELEASE FOR PROD	7/17/69	Ø	CV		JDe



UNLESS OTHERWISE SPECIFIED DIMENSIONS ARE IN INCHES AND INCLUDE CHEMICALLY APPLIED OR PLATED FINISHES DECIMALS FRACTIONS .X ± .05 1/64 .XX ± .01 TOLS. ANGLES .XXX ± .005 0° -30'	REQ'D	ITEM	PART NUMBER	DESCRIPTION	SYM.		
				LIST OF MATERIAL			
				THE TECHNICAL MATERIEL CORP.			
				MAMARONECK, NEW YORK			
				SUPPORT, MTG, XFMR			
MATERIAL XXXP PHENOLIC FINISH NATURAL	FINAL APPROVAL MECH. DES. ELECT. DES. CHECKED DRAWN	POSE JMM JDe JDe	DATE 7/17/69 DATE 7/15/69 DATE 4-1-69 DATE 3/26/69				
NOTICE TO PERSONS RECEIVING THIS DRAWING THE TECHNICAL MATERIEL CORPORATION claims proprietary right in the material disclosed hereon. This drawing is issued in confidence for engineering information only and may not be reproduced or used to manufacture anything shown hereon without permission from THE TECHNICAL MATERIEL CORPORATION to the user. This drawing is loaned for mutual assistance and is subject to recall at any time.				SIZE A	CODE IDENT. NO. 82679	DWG NO. PX 1062	ISSUE Ø
				SCALE	1 : 1	SHEET	OF

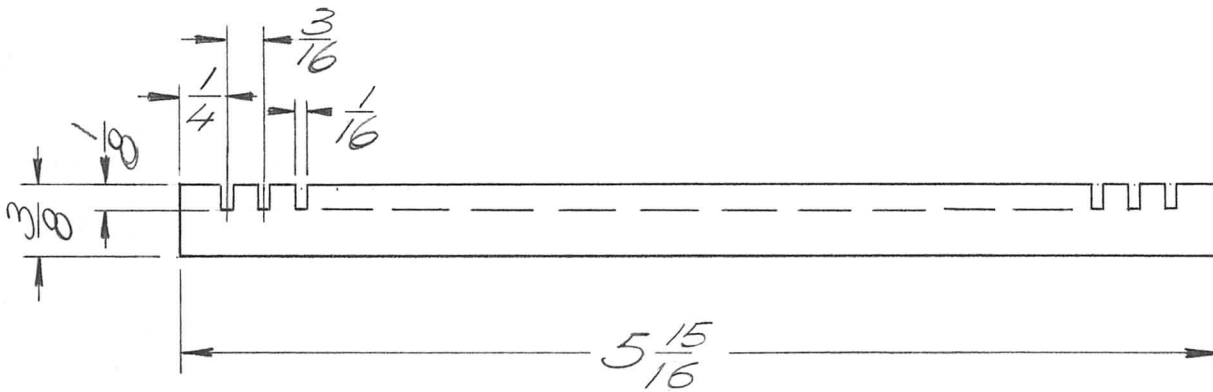
APPLICATION			REVISIONS						
QTY	MODEL USED ON	ASS'Y NO.	LTR	DESCRIPTION	DATE	E.M.N.NO	DRAFT	CHKD	APPD
	PROJ 15		X	EXP RELEASE	5/22/69		GE		
			Ø	ORIGINAL RELEASE	5/26/69	Ø	CV		<i>JDE</i>



REF: JJ 258-50

UNLESS OTHERWISE SPECIFIED DIMENSIONS ARE IN INCHES AND INCLUDE CHEMICALLY APPLIED OR PLATED FINISHES		REQ'D	ITEM	PART NUMBER	DESCRIPTION	SYM.
DECIMALS: .X ± .05, .XX ± .01, .XXX ± .005 FRACTIONS: 1/64, ANGLES: 0° - 30° TOLS.		LIST OF MATERIAL				
MATERIAL <i>TEFLON</i>		FINAL APPROVAL <i>[Signature]</i>		DATE <i>5/27/69</i>	THE TECHNICAL MATERIEL CORP. MAMARONECK, NEW YORK <i>BUSHING, PRESSURE SEAL</i>	
FINISH		MECH. DES. <i>[Signature]</i>		DATE <i>5/26/69</i>		
		ELECT. DES.		DATE		
		CHECKED <i>[Signature]</i>		DATE <i>5/22/69</i>		
		DRAWN <i>G. EVANGELIST</i>		DATE <i>5.22.69</i>		
NOTICE TO PERSONS RECEIVING THIS DRAWING THE TECHNICAL MATERIEL CORPORATION claims proprietary right in the material disclosed hereon. This drawing is issued in confidence for engineering information only and may not be reproduced or used to manufacture anything shown hereon without permission from THE TECHNICAL MATERIEL CORPORATION to the user. This drawing is loaned for mutual assistance and is subject to recall at any time.				SIZE A	CODE IDENT. NO. 82679	DWG NO. <i>PX 1063</i>
				SCALE <i>[Symbol]</i>	SHEET OF	
					ISSUE <i>Ø</i>	

APPLICATION			REVISIONS						
QTY	MODEL USED ON	ASS'Y NO.	LTR	DESCRIPTION	DATE	E.M.N.NO	DRAFT	CHKD	APPD
3	TLAM-1K	AS147	Ø	ORIGINAL RELEASE	8/31/70		KH		

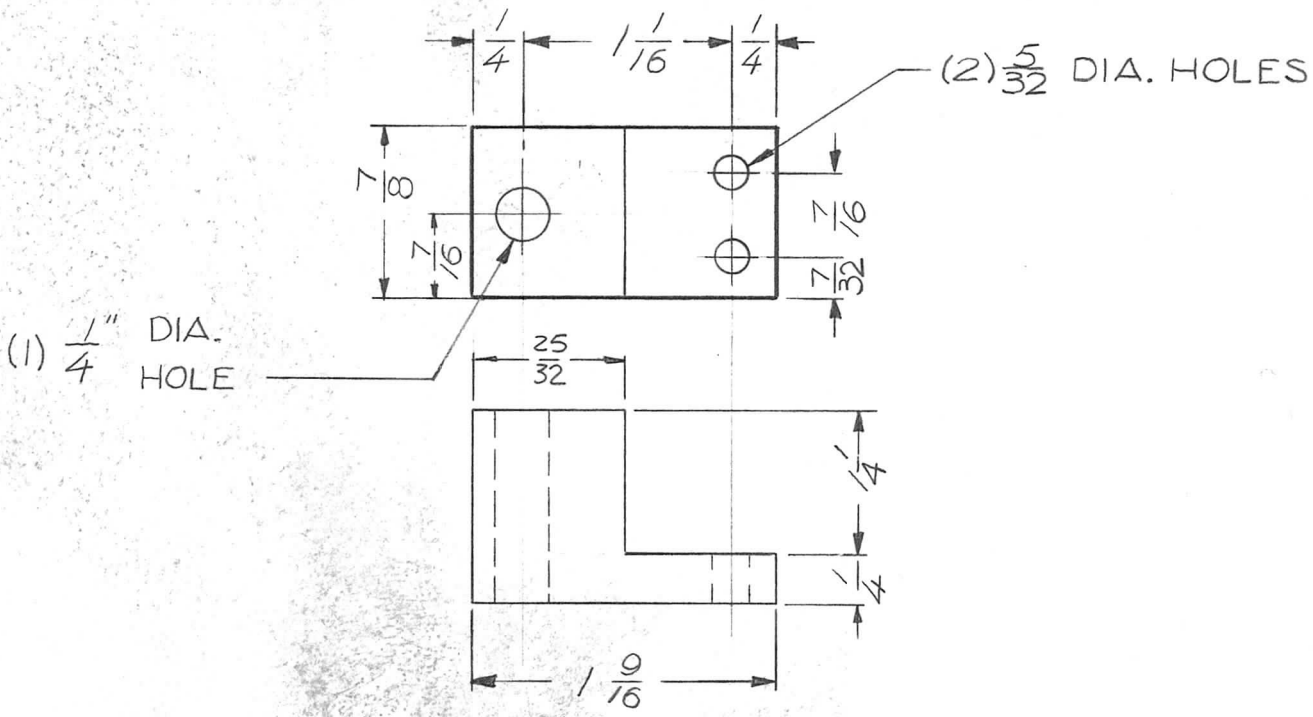


NOTE:

MACHINE 30 SLOTS $\frac{1}{16}$ WIDE
AND $\frac{1}{8}$ DEEP ON $\frac{3}{16}$ CENTERS
AS SHOWN.

UNLESS OTHERWISE SPECIFIED DIMENSIONS ARE IN INCHES AND INCLUDE CHEMICALLY APPLIED OR PLATED FINISHES		REQ'D	ITEM	PART NUMBER	DESCRIPTION	SYM.
DECIMALS .X ± .05 .XX ± .01 .XXX ± .005		F. BUDETTI		LIST OF MATERIAL		
FRACTIONS 1/64 ANGLES 0° - 30'		FINAL APPROVAL		DATE	THE TECHNICAL MATERIEL CORP.	
MATERIAL .125 THK. TEFLON		MECH. DES. AL PETROCCA		DATE	MAMARONECK, NEW YORK	
FINISH		ELECT. DES.		DATE	SPACER B.S. COIL	
		CHECKED		DATE		
		DRAWN		DATE		
NOTICE TO PERSONS RECEIVING THIS DRAWING THE TECHNICAL MATERIEL CORPORATION claims proprietary right in the material disclosed hereon. This drawing is issued in confidence for engineering information only and may not be reproduced or used to manufacture anything shown hereon without permission from THE TECHNICAL MATERIEL CORPORATION to the user. This drawing is loaned for mutual assistance and is subject to recall at any time.				SIZE A	CODE IDENT. NO. 82679	DWG NO. PX 1068
				SCALE 1:1	SHEET	OF
						ISSUE Ø

APPLICATION			REVISIONS						
QTY	MODEL USED ON	ASS'Y NO.	LTR	DESCRIPTION	DATE	E.M.N.NO	DRAFT	CHKD	APPD
4	PALAIOKA	AX5084	X ₁	ADD 25/32 DIM.	8-21-69		RE		
			Ø	ORIGINAL RELEASE	1/20/70		W		
			A	ADD OBSOLETE NOTE	4-5-72	20580	GE	EG	EG

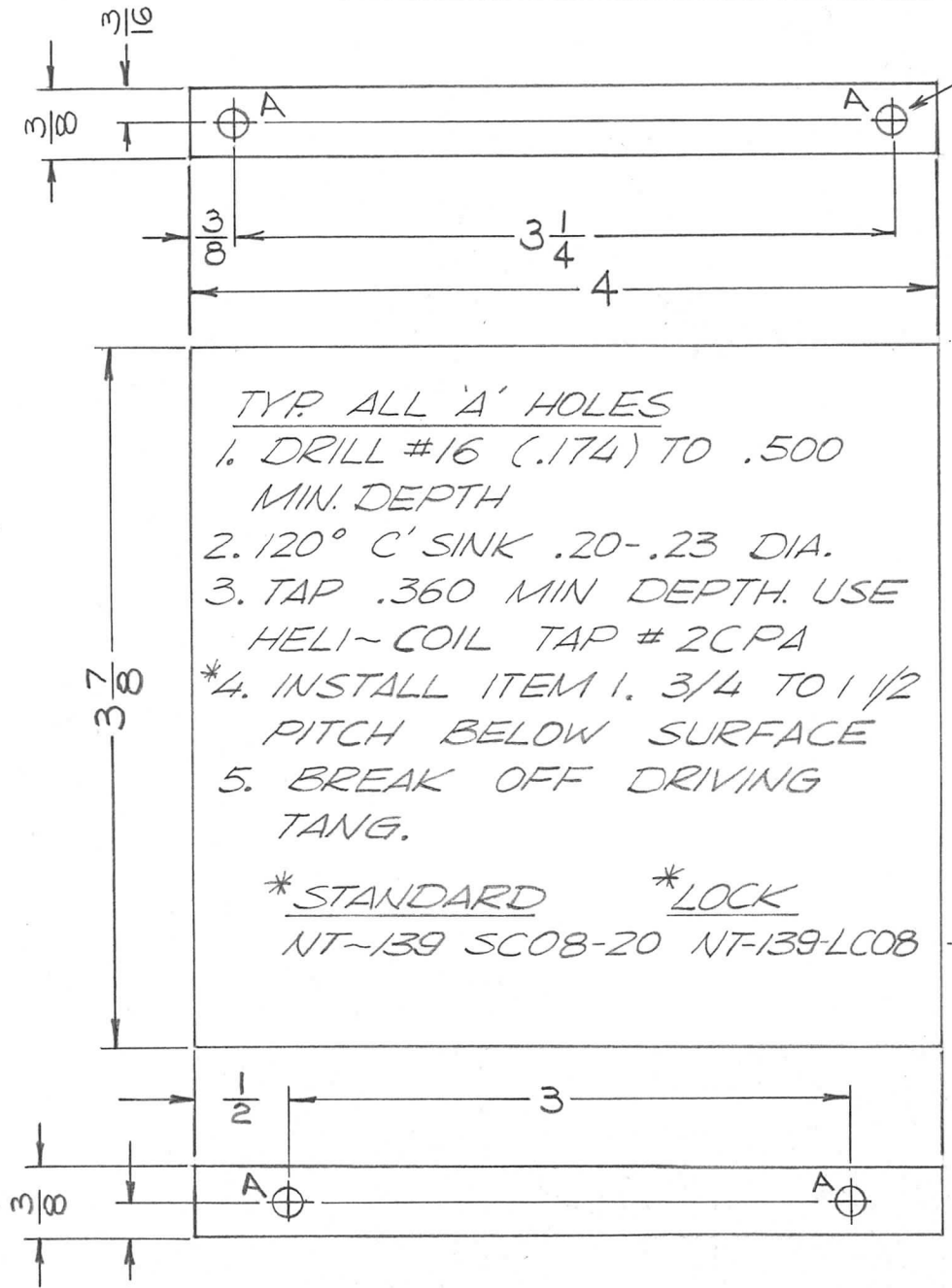


OBSOLETE

USE FOR PALA-10K & HFLA-10K WITH 8794
FINAL AMP SPARE PARTS ONLY.

UNLESS OTHERWISE SPECIFIED DIMENSIONS ARE IN INCHES AND INCLUDE CHEMICALLY APPLIED OR PLATED FINISHES		REQ'D	ITEM	PART NUMBER	DESCRIPTION	SYM.
DECIMALS: .X ± .05, .XX ± .01, .XXX ± .005 FRACTIONS: 1/64, ANGLES: 0° -30'		F. BUDETTI LIST OF MATERIAL				
MATERIAL: G-11 FINISH: NAT.		FINAL APPROVAL: <i>[Signature]</i> MECH. DES.: <i>[Signature]</i> ELECT. DES.: CHECKED: DRAWN: G. EVANGELIST		DATE: 1-70 DATE: DATE: DATE: 5-5-69		THE TECHNICAL MATERIEL CORP. MAMARONECK, NEW YORK BLOCK MTG, SOCKET
NOTICE TO PERSONS RECEIVING THIS DRAWING THE TECHNICAL MATERIEL CORPORATION claims proprietary right in the material disclosed hereon. This drawing is issued in confidence for engineering information only and may not be reproduced or used to manufacture anything shown hereon without permission from THE TECHNICAL MATERIEL CORPORATION to the user. This drawing is loaned for mutual assistance and is subject to recall at any time.		SIZE	CODE IDENT. NO.	DWG NO.	ISSUE	
		A	82679	PX1071	A	
		SCALE	SHEET		OF	

APPLICATION			REVISIONS						
QTY	MODEL USED ON	ASS'Y NO.	LTR	DESCRIPTION	DATE	E.M.N.NO	DRAFT	CHKD	APPD
2	PALAIOK	AX5084	Ø	ORIGINAL RELEASE	1-70		ALP.		



TYP. ALL 'A' HOLES

1. DRILL #16 (.174) TO .500 MIN. DEPTH
2. 120° C' SINK .20-.23 DIA.
3. TAP .360 MIN DEPTH. USE HELI-COIL TAP # 2CPA
- *4. INSTALL ITEM 1. 3/4 TO 1 1/2 PITCH BELOW SURFACE
5. BREAK OFF DRIVING TANG.

* STANDARD * LOCK
 NT-139 SC08-20 NT-139-LCOB -20

A HOLE, 4 REQ.
 DRILL VISENT
 ITEM # 1

4	1	NT139-SC08-20	HELICOIL	A
REQ'D	ITEM	PART NUMBER	DESCRIPTION	SYM.

F. BUDETTI		LIST OF MATERIAL		
FINAL APPROVAL	DATE	THE TECHNICAL MATERIEL CORP. MAMARONECK, NEW YORK BOARD, MTG, CAP.		
MECH. DES.	DATE			
ELECT. DES.	DATE			
CHECKED	DATE			
DRAWN	DATE			

UNLESS OTHERWISE SPECIFIED DIMENSIONS ARE IN INCHES AND INCLUDE CHEMICALLY APPLIED OR PLATED FINISHES

DECIMALS	FRACTIONS
.X ± .05	1/64
.XX ± .01	ANGLES
.XXX ± .005	0° -30'

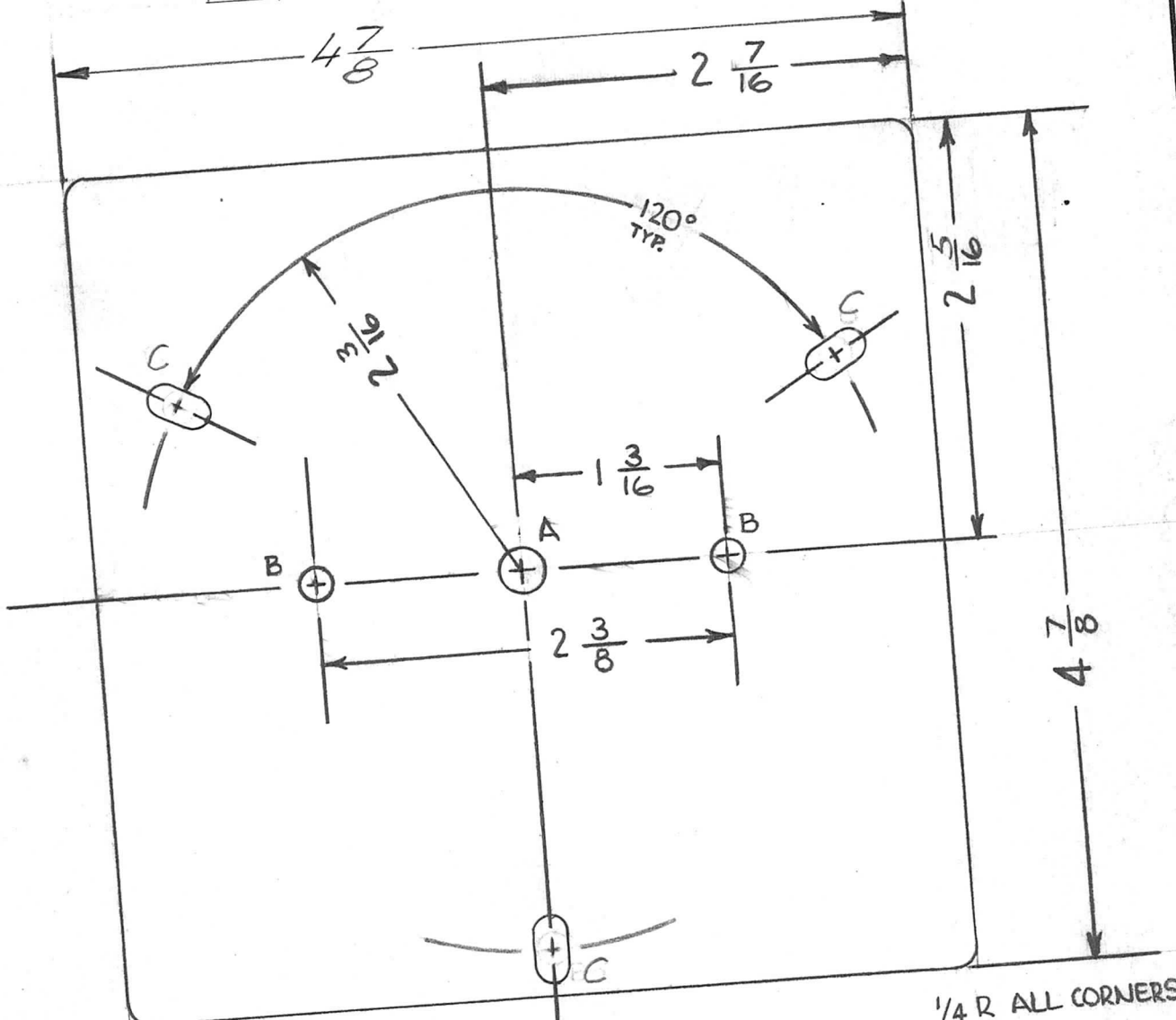
TOLS.

MATERIAL 3/8 THK. G7

FINISH

NOTICE TO PERSONS RECEIVING THIS DRAWING THE TECHNICAL MATERIEL CORPORATION claims proprietary right in the material disclosed hereon. This drawing is issued in confidence for engineering information only and may not be reproduced or used to manufacture anything shown hereon without permission from THE TECHNICAL MATERIEL CORPORATION to the user. This drawing is loaned for mutual assistance and is subject to recall at any time.				SIZE	CODE IDENT. NO.	DWG NO.	ISSUE
				A	82679	PX1072	Ø
SCALE			SHEET		OF		

APPLICATION		REVISIONS						
MODEL USED ON	ASS'Y NO.	LTR	DESCRIPTION	DATE	E.M.N.NO	DRAFT	CHKD	APPD
PALA-10K	AX5084	Ø	ORIGINAL RELEASE	1/4/70				
		A	3 SLOTS WERE 3/16 DIA	6/23/70	19900			FB



HOLE	DESCRIPTION	QTY
A	1/4 DIA	1
B	3/16 DIA	2
C	3/16 x 3/8 SLOT	3

UNLESS OTHERWISE SPECIFIED DIMENSIONS ARE IN INCHES AND INCLUDE CHEMICALLY APPLIED OR PLATED FINISHES

DECIMALS	FRACTIONS
.X ± .05	1/64
.XX ± .01	TOLS. ANGLES
.XXX ± .005	0° -30'

MATERIAL 1/8 G-17
FINISH

REQ'D	ITEM	PART NUMBER	DESCRIPTION	SY
FRANKIE BUDETTI				
FINAL APPROVAL	DB	DATE	1-8-70	
MECH. DES.	ALP.	DATE	1-8-70	
ELECT. DES.		DATE		
CHECKED		DATE		
DRAWN	DA	DATE	8-69	

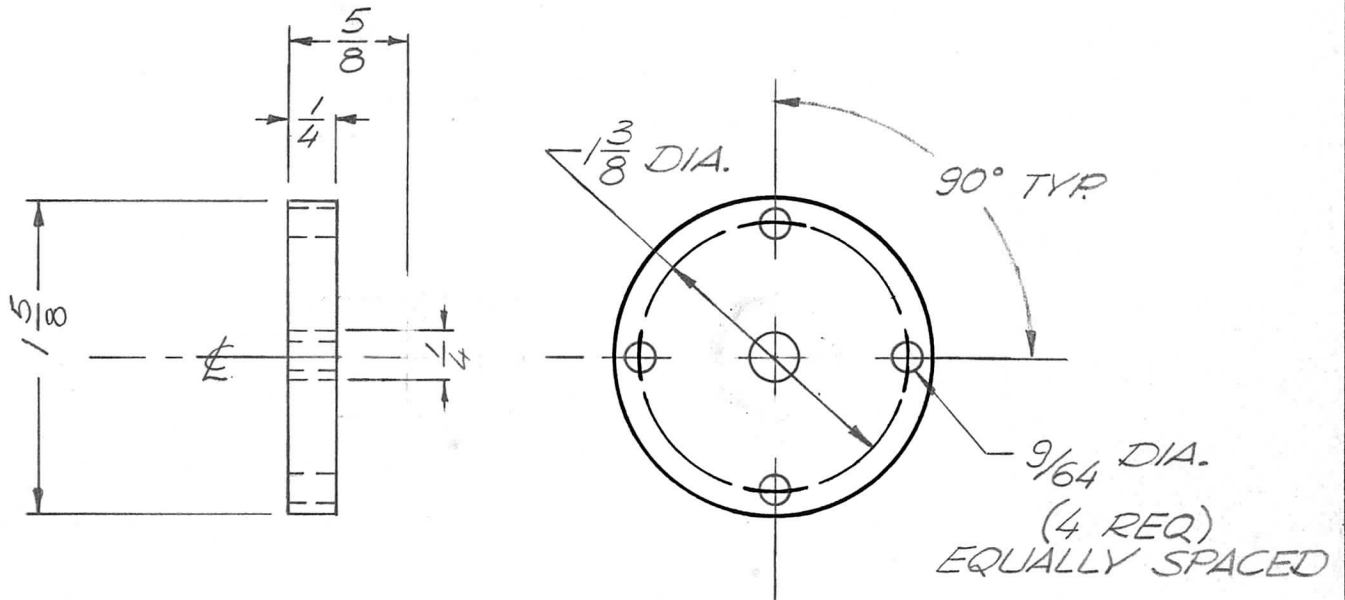
LIST OF MATERIAL
THE TECHNICAL MATERIEL CORP.
MAMARONECK, NEW YORK

BOARD, MTG, COIL

SIZE A	CODE IDENT. NO. 82679	DWG NO. PX1075
SCALE	SHEET	OF

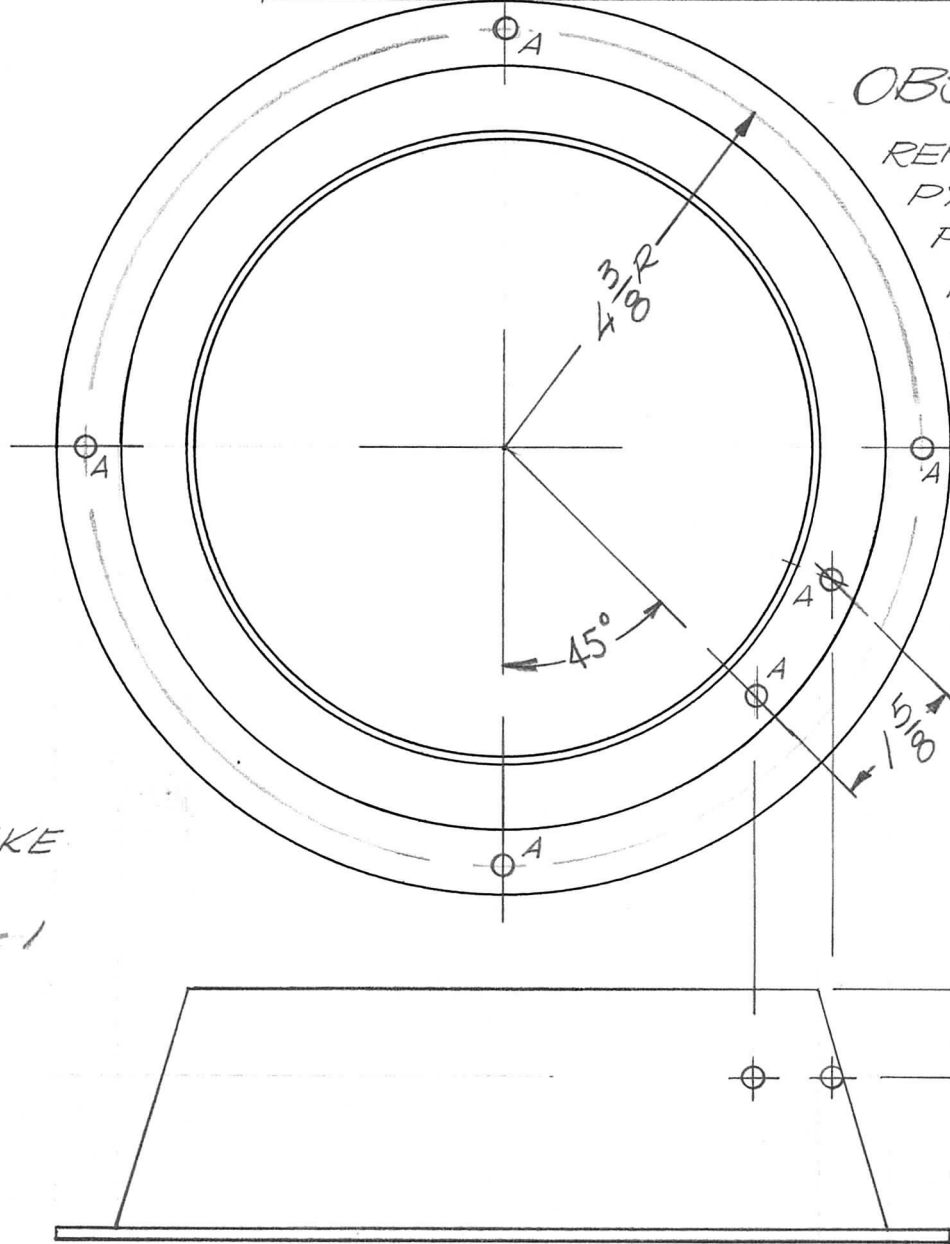
NOTICE TO PERSONS RECEIVING THIS DRAWING
THE TECHNICAL MATERIEL CORPORATION claims proprietary right in the material disclosed hereon. This drawing is issued in confidence for engineering information only and may not be reproduced or used to manufacture anything shown hereon without permission from THE TECHNICAL MATERIEL CORPORATION to the user. This drawing is for informational assistance and is subject to recall at any time.

APPLICATION			REVISIONS						
QTY	MODEL USED ON	ASS'Y NO.	LTR	DESCRIPTION	DATE	E.M.N.NO	DRAFT	CHKD	APPD
1	PALA 10 K	API484		EXP RELEASE	12/5/69		GE		
			Ø	ORIGINAL RELEASE	1/20/70		W		



UNLESS OTHERWISE SPECIFIED DIMENSIONS ARE IN INCHES AND INCLUDE CHEMICALLY APPLIED OR PLATED FINISHES		REQ'D	ITEM	PART NUMBER	DESCRIPTION	SYM.
DECIMALS .X ± .05 .XX ± .01 .XXX ± .005 FRACTIONS 1/64 ANGLES 0° - 30°		LIST OF MATERIAL				
MATERIAL <i>TEFLON</i>		FINAL APPROVAL	<i>DOB</i>	DATE	THE TECHNICAL MATERIEL CORP. MAMARONECK, NEW YORK	
FINISH		MECH. DES.	<i>DOB</i>	DATE	<i>INSULATOR MTG. BUTTON</i>	
		ELECT. DES.		DATE		
		CHECKED		DATE		
		DRAWN	<i>EVANGELIST</i>	DATE 12/15/69		
NOTICE TO PERSONS RECEIVING THIS DRAWING THE TECHNICAL MATERIEL CORPORATION claims proprietary right in the material disclosed hereon. This drawing is issued in confidence for engineering information only and may not be reproduced or used to manufacture anything shown hereon without permission from THE TECHNICAL MATERIEL CORPORATION to the user. This drawing is loaned for mutual assistance and is subject to recall at any time.		SIZE	CODE IDENT. NO.	DWG NO.	ISSUE	
		A	82679	PX 1077	Ø	
		SCALE		SHEET	OF	

APPLICATION			REVISIONS							
QTY	MODEL USED ON	ASS'Y NO.	LTR	DESCRIPTION	DATE	E.M.N.NO	DRAFT	CHKD	APPD	
1	PALA 10 K	AX5084	A	ORIGINAL RELEASE	123-69		GE			
			A	OBSOLETE NOTE ADD.	4-6-72	20580	GE	EP	EP	



OBSOLETE
 REPLACED BY
 PX1178 USE FOR
 PALA-10K &
 HFLA-10K WITH
 8794 FINAL
 AMP SPARE
 PARTS ONLY

ALL A HOLES
 3/16 DIA.

REF. MAKE
 FROM
 FP206-1

1	1	FP206-1	FLUE, OUTER FLANGED	
REQ'D	ITEM	PART NUMBER	DESCRIPTION	SYM.

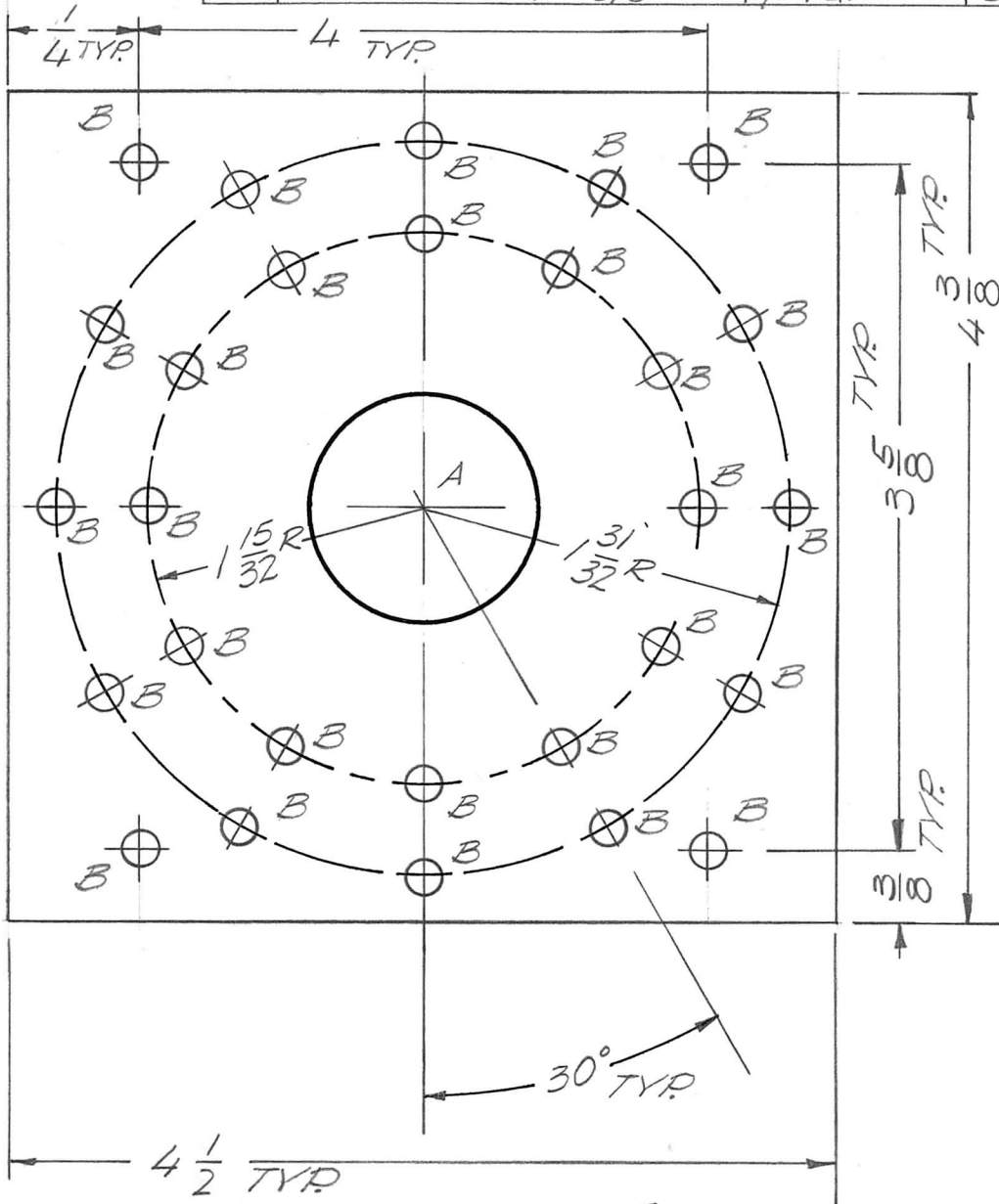
LIST OF MATERIAL			
UNLESS OTHERWISE SPECIFIED DIMENSIONS ARE IN INCHES AND INCLUDE CHEMICALLY APPLIED OR PLATED FINISHES		FINAL APPROVAL	DATE
DECIMALS: .X ± .05, .XX ± .01, .XXX ± .005; FRACTIONS: 1/64, ANGLES: 0° - 30'		MECH. DES. ALP.	DATE 1/22/70
MATERIAL	ELECT. DES.	CHECKED	DATE
FINISH	DRAWN	EVANGELIST	DATE 123-69

THE TECHNICAL MATERIEL CORP.
 MAMARONECK, NEW YORK

FLUE, FINAL, TUBE

<p>NOTICE TO PERSONS RECEIVING THIS DRAWING THE TECHNICAL MATERIEL CORPORATION claims proprietary right in the material disclosed hereon. This drawing is issued in confidence for engineering information only and may not be reproduced or used to manufacture anything shown hereon without permission from THE TECHNICAL MATERIEL CORPORATION to the user. This drawing is loaned for mutual assistance and is subject to recall at any time.</p>				SIZE A	CODE IDENT. NO. 82679	DWG NO. PX1078	ISSUE A
SCALE 1:2			SHEET OF				

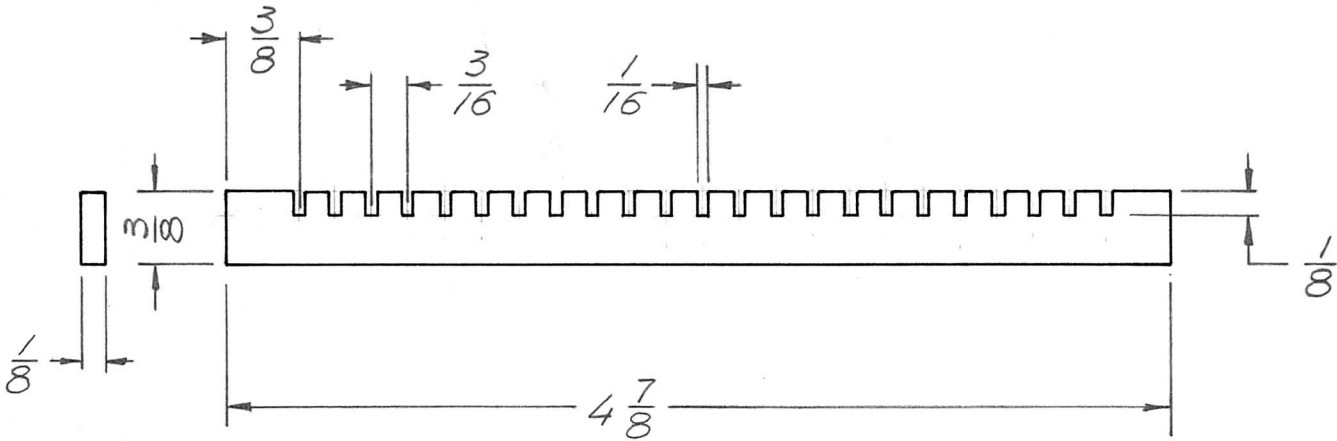
APPLICATION			REVISIONS						
QTY	MODEL USED ON	ASS'Y NO.	LTR	DESCRIPTION	DATE	E.M.N.NO	DRAFT	CHKD	APPD
1	PALA-10K	AX5080	Ø	ORIGINAL RELEASE	12/5/69		GE		
			A	OVERALL DIM. W/ 4 3/8	8/24/72	20852	GE	CL	CL



A HOLE 1 3/16 DIA. 1 REQ.
 B HOLES 1/64 DIA. 28 REQ.

UNLESS OTHERWISE SPECIFIED DIMENSIONS ARE IN INCHES AND INCLUDE CHEMICALLY APPLIED OR PLATED FINISHES		REQ'D	ITEM	PART NUMBER	DESCRIPTION	SYM.		
DECIMALS: .X ± .05, .XX ± .01, .XXX ± .005 FRACTIONS: 1/64, ANGLES: 0° - 30° TOLS.		F. BUDETTI LIST OF MATERIAL						
MATERIAL 1/8 G-11		FINAL APPROVAL <i>[Signature]</i>		DATE 1-19-70	THE TECHNICAL MATERIEL CORP. MAMARONECK, NEW YORK			
FINISH		MECH. DES.		DATE	WAFER (OUTPUT DRIVER)			
		ELECT. DES.		DATE				
		CHECKED		DATE				
		DRAWN <i>EVANGELIS</i>		DATE 12.5.69				
NOTICE TO PERSONS RECEIVING THIS DRAWING THE TECHNICAL MATERIEL CORPORATION claims proprietary right in the material disclosed hereon. This drawing is issued in confidence for engineering information only and may not be reproduced or used to manufacture anything shown hereon without permission from THE TECHNICAL MATERIEL CORPORATION to the user. This drawing is loaned for mutual assistance and is subject to recall at any time.					SIZE A	CODE IDENT. NO. 82679	DWG NO. PX1082	ISSUE A
SCALE				SHEET		OF		

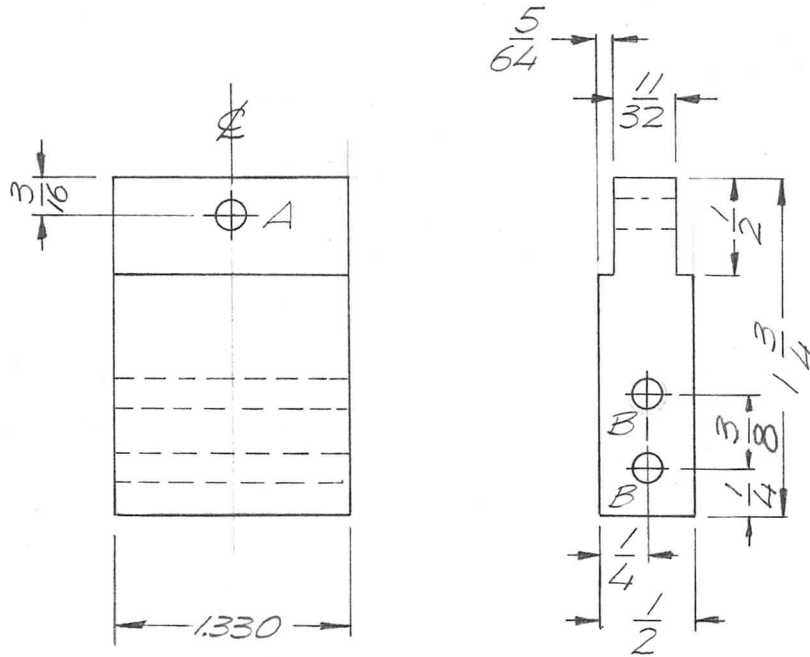
APPLICATION			REVISIONS						
QTY	MODEL USED ON	ASS'Y NO.	LTR	DESCRIPTION	DATE	E.M.N.NO	DRAFT	CHKD	APPD
3	PALA-10K	AX5084	X	EXP. RELEASE	122269		GE		
			Ø	ORIGINAL RELEASE	1/20/70		W		



NOTE:
MACHINE 23 SLOTS 1/16 WIDE
AND 1/8 DEEP ON 3/16 CENTERS
AS SHOWN.

UNLESS OTHERWISE SPECIFIED DIMENSIONS ARE IN INCHES AND INCLUDE CHEMICALLY APPLIED OR PLATED FINISHES		REQ'D	ITEM	PART NUMBER	DESCRIPTION	SYM.	
<small>DECIMALS</small> .X ± .05 .XX ± .01 .XXX ± .005 <small>FRACTIONS</small> 1/64 ANGLES 0° - 30'		F. BUDETTI		LIST OF MATERIAL			
MATERIAL 125 TEFLON		FINAL APPROVAL	DATE	THE TECHNICAL MATERIEL CORP.			
FINISH		MECH. DES.	DATE	MAMARONECK, NEW YORK			
		ELECT. DES.	DATE	SPACER, B.S. COIL			
		CHECKED	DATE				
		DRAWN	DATE				
NOTICE TO PERSONS RECEIVING THIS DRAWING THE TECHNICAL MATERIEL CORPORATION claims proprietary right in the material disclosed hereon. This drawing is issued in confidence for engineering information only and may not be reproduced or used to manufacture anything shown hereon without permission from THE TECHNICAL MATERIEL CORPORATION to the user. This drawing is loaned for mutual assistance and is subject to recall at any time.				SIZE	CODE IDENT. NO.	DWG NO.	ISSUE
				A	82679	PX 1084	Ø
				SCALE	SHEET		OF

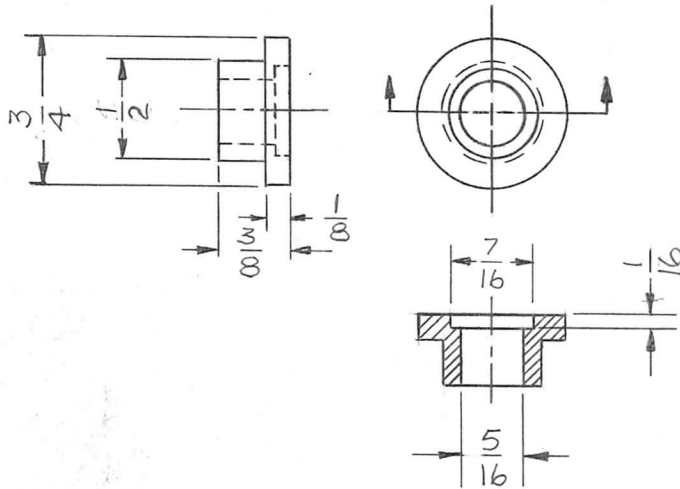
APPLICATION			REVISIONS						
QTY	MODEL USED ON	ASS'Y NO.	LTR	DESCRIPTION	DATE	E.M.N.NO	DRAFT	CHKD	APPD
1	PALA 10 K	AX5096	B	REDRAWN	4.29.70	19855	GE	<i>[Signature]</i>	



HOLE	DESCRIPTION	QTY.
A	9/64 DIA.	1
B	11/64 DIA.	2

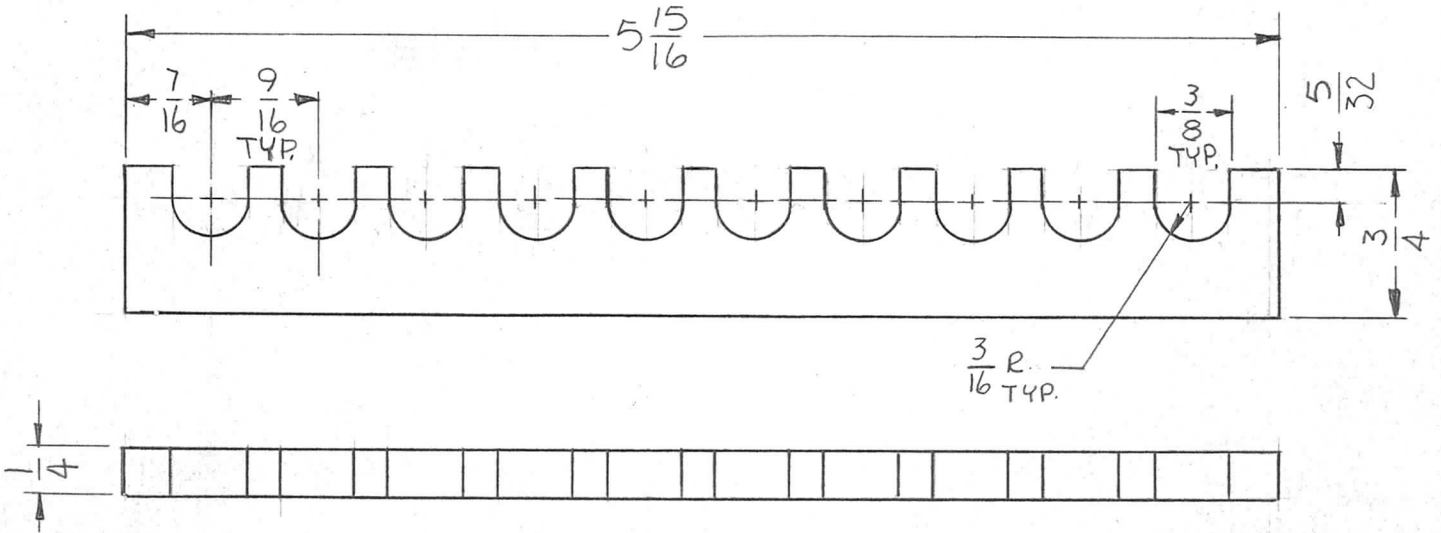
<small>UNLESS OTHERWISE SPECIFIED DIMENSIONS ARE IN INCHES AND INCLUDE CHEMICALLY APPLIED OR PLATED FINISHES</small> <small>DECIMALS .X ± .05 .XX ± .01 .XXX ± .005</small> <small>FRACTIONS 1/64 ANGLES 0° -30'</small>	REQ'D	ITEM	PART NUMBER	DESCRIPTION	SYM.
	F. BUDETTI		LIST OF MATERIAL		
MATERIAL G10 EPOXY	MECH. DES.	DATE	THE TECHNICAL MATERIEL CORP. MAMARONECK, NEW YORK		
FINISH	ELECT. DES.	DATE	CONNECTOR, SOLENOID INSULATED		
	CHECKED	DATE			
	DRAWN GE	DATE 4.29.70			
<small>NOTICE TO PERSONS RECEIVING THIS DRAWING</small> <small>THE TECHNICAL MATERIEL CORPORATION claims proprietary right in the material disclosed hereon. This drawing is issued in confidence for engineering information only and may not be reproduced or used to manufacture anything shown hereon without permission from THE TECHNICAL MATERIEL CORPORATION to the user. This drawing is loaned for mutual assistance and is subject to recall at any time.</small>			SIZE A	CODE IDENT. NO. 82679	DWG NO. PX 1089
			SCALE NTS	SHEET OF	
				ISSUE B	

APPLICATION			REVISIONS						
QTY	MODEL USED ON	ASS'Y NO.	LTR	DESCRIPTION	DATE	E.M.N.NO	DRAFT	CHKD	APPD
2	PALA-10K	AX5096	XI	CHG QTY FROM 16 TO 2	8-27-69		EA		
			Ø	ORIGINAL RELEASE	1/20/70		U		



UNLESS OTHERWISE SPECIFIED DIMENSIONS ARE IN INCHES AND INCLUDE CHEMICALLY APPLIED OR PLATED FINISHES	REQ'D	ITEM	PART NUMBER	DESCRIPTION	SYM.
				LIST OF MATERIAL	
DECIMALS .X ± .05 .XX ± .01 .XXX ± .005	FRACTIONS 1/64 ANGLES 0° - 30°		FINAL APPROVAL <i>EB</i>	DATE 7-20-70	THE TECHNICAL MATERIEL CORP. MAMARONECK, NEW YORK
MATERIAL TEFLON	MECH. DES. <i>WRL</i>	DATE 6/27/69	GLAND, SPRING		
FINISH TEFLON	ELECT. DES.	DATE			
	CHECKED	DATE			
	DRAWN <i>EB</i>	DATE 6-26-69			
NOTICE TO PERSONS RECEIVING THIS DRAWING THE TECHNICAL MATERIEL CORPORATION claims proprietary right in the material disclosed hereon. This drawing is issued in confidence for engineering information only and may not be reproduced or used to manufacture anything shown hereon without permission from THE TECHNICAL MATERIEL CORPORATION to the user. This drawing is loaned for mutual assistance and is subject to recall at any time.				SIZE A	CODE IDENT. NO. 82679
				DWG NO. PX1090	ISSUE Ø
SCALE 1:1			SHEET OF		

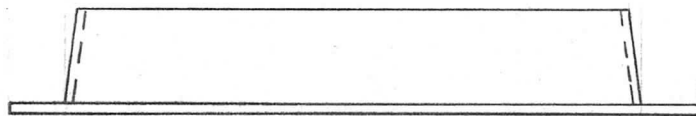
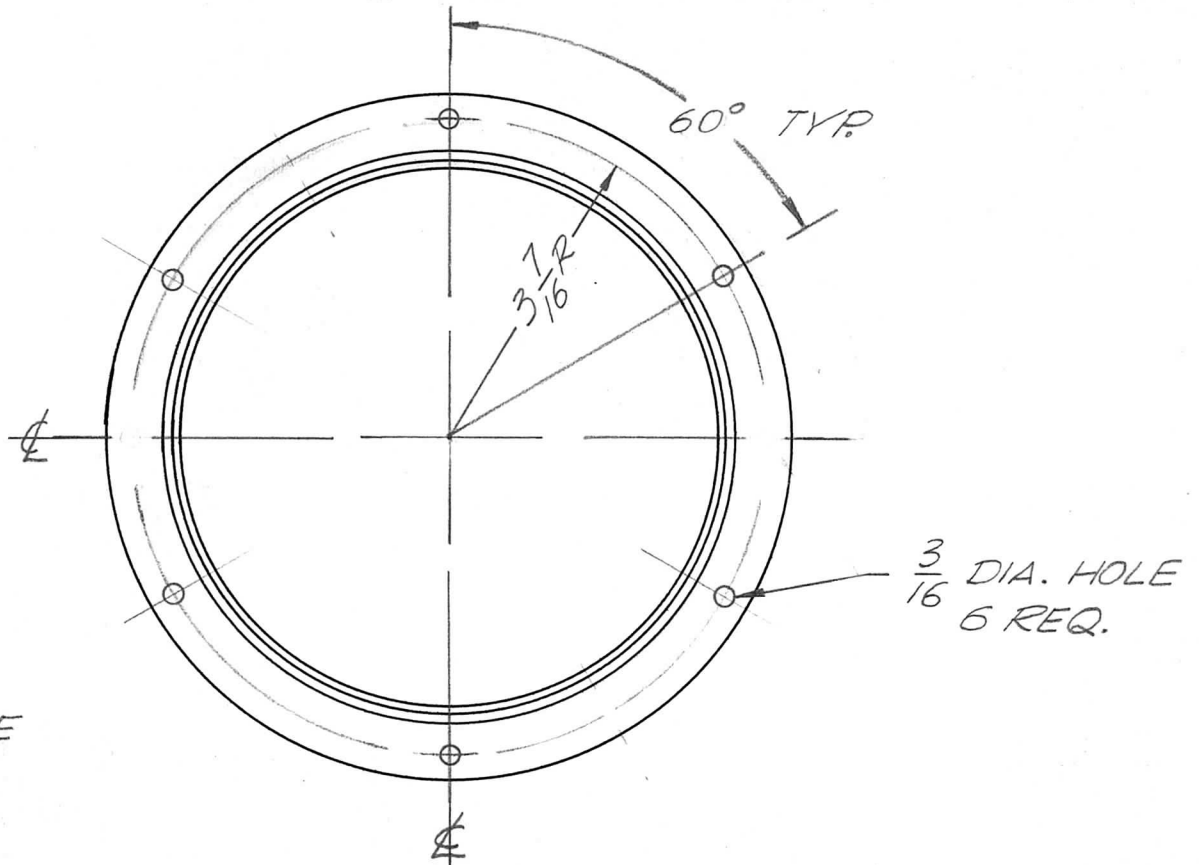
APPLICATION			REVISIONS						
QTY	MODEL USED ON	ASS'Y NO.	LTR	DESCRIPTION	DATE	E.M.N.NO	DRAFT	CHKD	APPD
3	PALA-10K	AX5084	Ø	ORIGINAL RELEASE	1/20/70		W		
			A.	1/4 WAS 1/8 (MATL THK)	6/21/72	20752	GE	EJ	EJ



UNLESS OTHERWISE SPECIFIED DIMENSIONS ARE IN INCHES AND INCLUDE CHEMICALLY APPLIED OR PLATED FINISHES		REQ'D	ITEM	PART NUMBER	DESCRIPTION	SYM.
DECIMALS .X ± .05 .XX ± .01 .XXX ± .005	FRACTIONS 1/64 ANGLES 0° - 30°	F. BUDETTI LIST OF MATERIAL				
MATERIAL 1/4 THICK TEFLON FINISH		FINAL APPROVAL <i>SR</i>	DATE 1-19-70	THE TECHNICAL MATERIEL CORP. MAMARONECK, NEW YORK		
		MECH. DES. <i>SR</i>	DATE	SPACER, COIL		
		ELECT. DES.	DATE			
		CHECKED	DATE			
		DRAWN <i>RE</i>	DATE 8-14-69			

NOTICE TO PERSONS RECEIVING THIS DRAWING THE TECHNICAL MATERIEL CORPORATION claims proprietary right in the material disclosed hereon. This drawing is issued in confidence for engineering information only and may not be reproduced or used to manufacture anything shown hereon without permission from THE TECHNICAL MATERIEL CORPORATION to the user. This drawing is loaned for mutual assistance and is subject to recall at any time.	SIZE A	CODE IDENT. NO. 82679	DWG NO. PX1092	ISSUE A
	SCALE		SHEET OF	

APPLICATION			REVISIONS						
QTY	MODEL USED ON	ASS'Y NO.	LTR	DESCRIPTION	DATE	E.M.N.NO	DRAFT	CHKD	APPD
1	PALA 10 K	AP48	X	EXP RELEASE	12-2-69		GE		
			Ø	ORIGINAL RELEASE	1/30/70		W.		



REQ'D	ITEM	PART NUMBER	DESCRIPTION	SYM.
1	1	FP 206-2	FLUE, OUTER FLANGED	

UNLESS OTHERWISE SPECIFIED DIMENSIONS ARE IN INCHES AND INCLUDE CHEMICALLY APPLIED OR PLATED FINISHES		F. BUDETTI		LIST OF MATERIAL	
DECIMALS .X ± .05 .XX ± .01 .XXX ± .005	FRACTIONS 1/64 ANGLES 0° -30'	FINAL APPROVAL	DATE	THE TECHNICAL MATERIEL CORP. MAMARONECK, NEW YORK FLUE DR EXH.	
MATERIAL	MECH. DES.	DATE			
FINISH	ELECT. DES.	DATE			
	CHECKED	DATE			
	DRAWN	DATE			

NOTICE TO PERSONS RECEIVING THIS DRAWING				SIZE	CODE IDENT. NO.	DWG NO.	ISSUE
THE TECHNICAL MATERIEL CORPORATION claims proprietary right in the material disclosed hereon. This drawing is issued in confidence for engineering information only and may not be reproduced or used to manufacture anything shown hereon without permission from THE TECHNICAL MATERIEL CORPORATION to the user. This drawing is loaned for mutual assistance and is subject to recall at any time.				A	82679	PX-1097	Ø
SCALE			SHEET		OF		