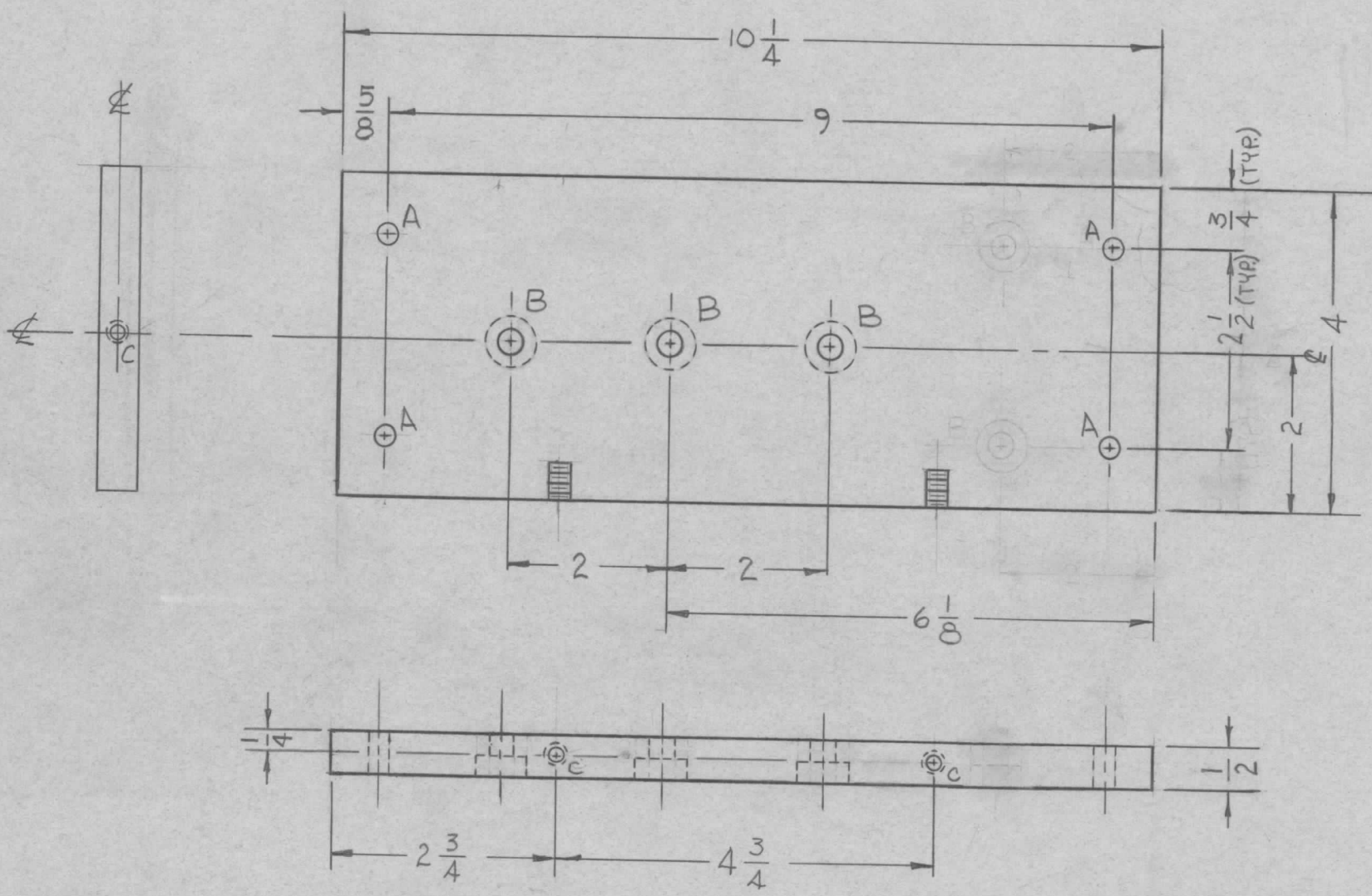


REVISIONS						
ZONE	LTR	DESCRIPTION	DATE	E.M.N.NO	DRAFT	CHKD
	X ₁	CHG'D DIM FR. 1 1/2 TO 2 1/2	5-21-69		RE	
	X ₂	MOVED CTR. BORE TO REAR SIDE	5-22-69		RE	
	Ø	ORIGINAL RELEASE	1/26/70		W	
	A	QTY C'HL WAS 2 ADD END VW	4-22-70	19819	GE	<i>[Signature]</i>



HOLE	DESCRIPTION	REQ'D
A	9/32 DIA.	4
B	5/16 DIA. HOLE CTR' BORE 5/8 DIA. 1/4 DEEP.	3
C	#29 DRILL. TAP 8-32 1/2" DEEP.	3

REF: LD2376

1	PALA-10K	API48
QTY / UNIT	MODEL USED ON	ASS'Y NO.
APPLICATION		
CODE		

NOTICE TO PERSONS RECEIVING THIS DRAWING
 THE TECHNICAL MATERIEL CORPORATION claims proprietary right in the material disclosed hereon. This drawing is issued in confidence for engineering information only and may not be reproduced or used to manufacture anything shown hereon without permission from THE TECHNICAL MATERIEL CORPORATION to the user. This drawing is loaned for mutual assistance and is subject to recall at any time.

UNLESS OTHERWISE SPECIFIED
 DIMENSIONS ARE IN INCHES
 AND INCLUDE CHEMICALLY APPLIED
 OR PLATED FINISHES

DECIMALS .X ± .05
 .XX ± .01
 .XXX ± .005

FRACTIONS TOLS. 1/64
 ANGLES 0° -30'

MATERIAL XXXP PHENOLIC
 1/2 THICK

FINISH

REQ'D	ITEM	PART NUMBER	DESCRIPTION	SYM.
		F. BUDETTI	LIST OF MATERIAL	
FINAL APPROVAL <i>[Signature]</i>		DATE 1-70	THE TECHNICAL MATERIEL CORP. MAMARONECK, NEW YORK BOARD, TERMINATING INPUT	
MECH. DES. ALP. <i>[Signature]</i>		DATE 1-70		
ELECT. DES. AGC		DATE 1-76		
CHECKED		DATE		
DRAWN RE		DATE 5.19.69	SIZE B	CODE IDENT. NO. 82679
			DWG NO. PX 1086	ISSUE A
SCALE 1:2			SHEET	OF