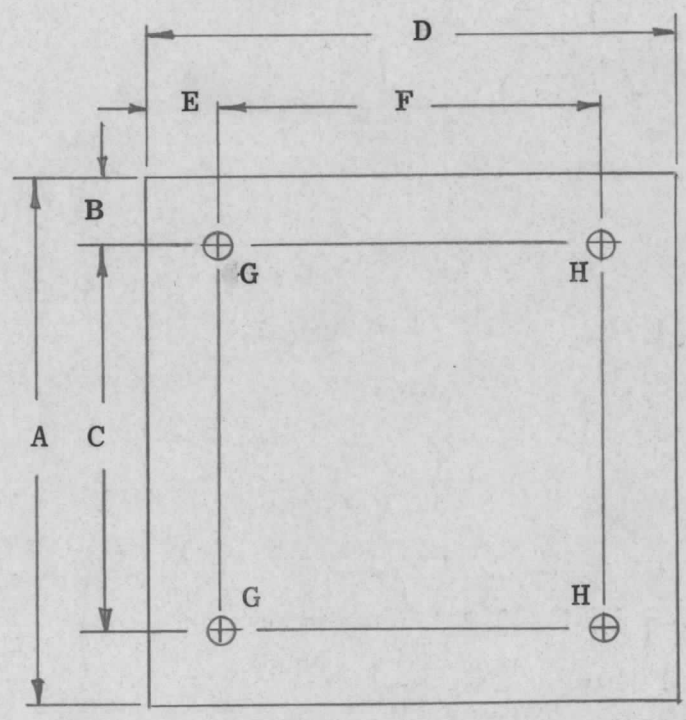


TMC P/N	A	B	C	D	E	F	G	H	MATERIAL	FINISH
PX1031-1	5-3/16	7/16	4-3/8	4	7/8	2-1/4	15/64	15/64	1/4 G-10 EPOXY	SI13 FUNGUS PROOF
PX1031-2	4	3/4	2 1/2	10/4	5/8	9	9/32	9/32	PHENOLIC 1/4 THICK	
PX1031-3	2	3/8	1 1/4	7	3/8	6 1/4	13/64	13/64	PHENOLIC 1/4 THICK	

REVISIONS						
ZONE	LTR	DESCRIPTION	DATE	E.M.N.NO	DRAFT	CHKD APPD
	X	REDRAWN & REV.	11-10-67	+	HY	DB
	Ø	ORIGINAL RELEASE FOR PRODUCTION	4/2/68	Ø	HZ	JWA
	A	PX1031-2 ADDED	5-27-69	19463	GE	FB
	B	PX1031-3 ADDED	5-5-70	21640	G.D.L.	K.M. P.B.



REQ'D	ITEM	PART NUMBER	DESCRIPTION	SYM.
		F. BUDETTI	LIST OF MATERIAL	SK 3290-PX1005

STANDARD	
QTY / UNIT	ASS'Y NO.
APPLICATION	
CODE	S401-451

UNLESS OTHERWISE SPECIFIED DIMENSIONS ARE IN INCHES AND INCLUDE CHEMICALLY APPLIED OR PLATED FINISHES	
DECIMALS	FRACTIONS
.X ± .05	1/64
.XX ± .01	TOLS. ANGLES
.XXX ± .005	0° - 30'
MATERIAL 1/4 G-10	
FINISH NATURAL	
SI13 FUNGUS PROOF	

FINAL APPROVAL	DATE
MECH. DES.	DATE
ELECT. DES.	DATE
CHECKED	DATE
DRAWN	DATE

THE TECHNICAL MATERIEL CORP. MAMARONECK, NEW YORK			
PLATE MTG CAP			
SIZE	CODE IDENT. NO.	DWG NO.	ISSUE
B	82679	PX1031	B
SCALE		SHEET OF	

NOTICE TO PERSONS RECEIVING THIS DRAWING
 THE TECHNICAL MATERIEL CORPORATION claims proprietary right in the material disclosed hereon. This drawing is issued in confidence for engineering information only and may not be reproduced or used to manufacture anything shown hereon without permission from THE TECHNICAL MATERIEL CORPORATION to the user. This drawing is loaned for mutual assistance and is subject to recall at any time.