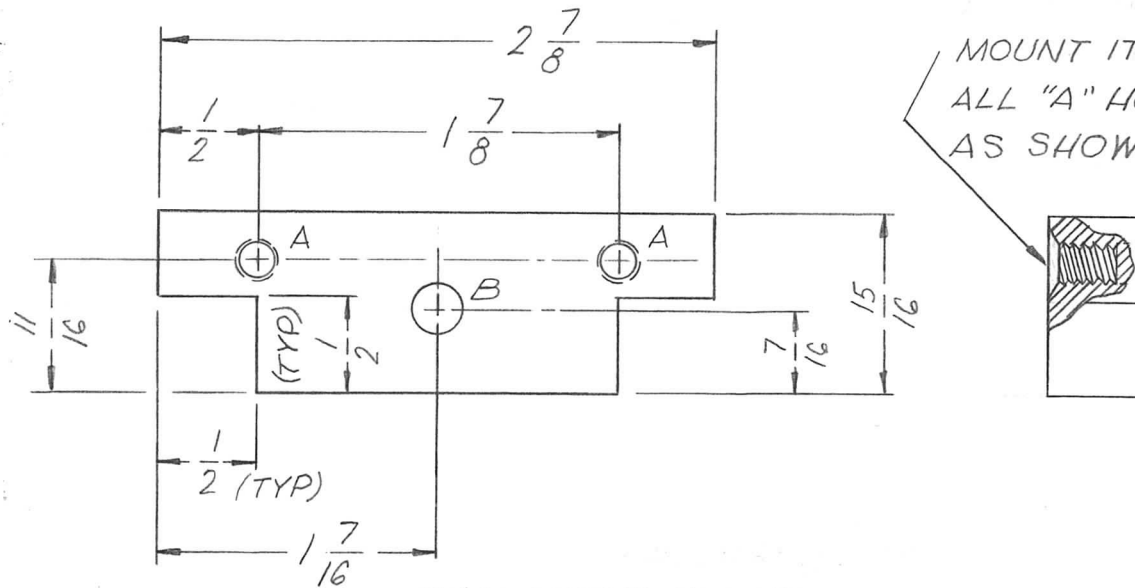


APPLICATION			REVISIONS						
QTY	MODEL USED ON	ASS'Y NO.	LTR	DESCRIPTION	DATE	E.M.N.NO	DRAFT	CHKD	APPD
2	TRO-47A		X	EXPERIMENTAL RELEASE	2.23.67	---	WFW	MM	JPS
			Ø	ORIGINAL RELEASE	8/26/69	Ø	W		

- HOLE -

A - SEE NOTES (2 REQ)
 B - 1/4 DIA. (1 REQ)



MOUNT ITEM 1 IN ALL "A" HOLES AS SHOWN

ITEM MOUNTING NOTES

- 1 - DRILL #16 (.174) TO .500 MIN DEPTH
- 2 - 120 DEGREES C'SK TO .20-.23 DIA
- 3 - TAP .360 MIN DEPTH. USE HELI-COIL TAP #2CPA.
- 4 - INSTALL ITEM 1, (3/4 TO 1-1/2 PITCH BELOW SURFACE).
- 5 - BREAK OFF DRIVING TANG

REQ'D	ITEM	PART NUMBER	DESCRIPTION	SYM.
2	1	NT139-SC08-20	SCREW, THREAD INSERT	A

UNLESS OTHERWISE SPECIFIED DIMENSIONS ARE IN INCHES AND INCLUDE CHEMICALLY APPLIED OR PLATED FINISHES		BUTLER LIST OF MATERIAL		
DECIMALS .X ± .05 .XX ± .01 .XXX ± .005	FRACTIONS 1/64 ANGLES 0° -30'	FINAL APPROVAL <i>SGM</i>	DATE 8/26/69	THE TECHNICAL MATERIEL CORP. MAMARONECK, NEW YORK <i>BRKT, SUPPORT, CORE</i>
MATERIAL 1/2 THK PHENOLIC, XXXP	MECH. DES.	DATE		
FINISH S113 FUNGUS PROOF.	ELECT. DES.	DATE		
S401-451	CHECKED <i>SG</i>	DATE 2/23/67		
	DRAWN <i>WFW</i>	DATE 2.23.67		

NOTICE TO PERSONS RECEIVING THIS DRAWING THE TECHNICAL MATERIEL CORPORATION claims proprietary right in the material disclosed hereon. This drawing is issued in confidence for engineering information only and may not be reproduced or used to manufacture anything shown hereon without permission from THE TECHNICAL MATERIEL CORPORATION to the user. This drawing is loaned for mutual assistance and is subject to recall at any time.	SIZE A	CODE IDENT. NO. 82679	DWG NO. <i>PX1015</i>	ISSUE Ø
	SCALE 1:1	SHEET 1 OF 1		