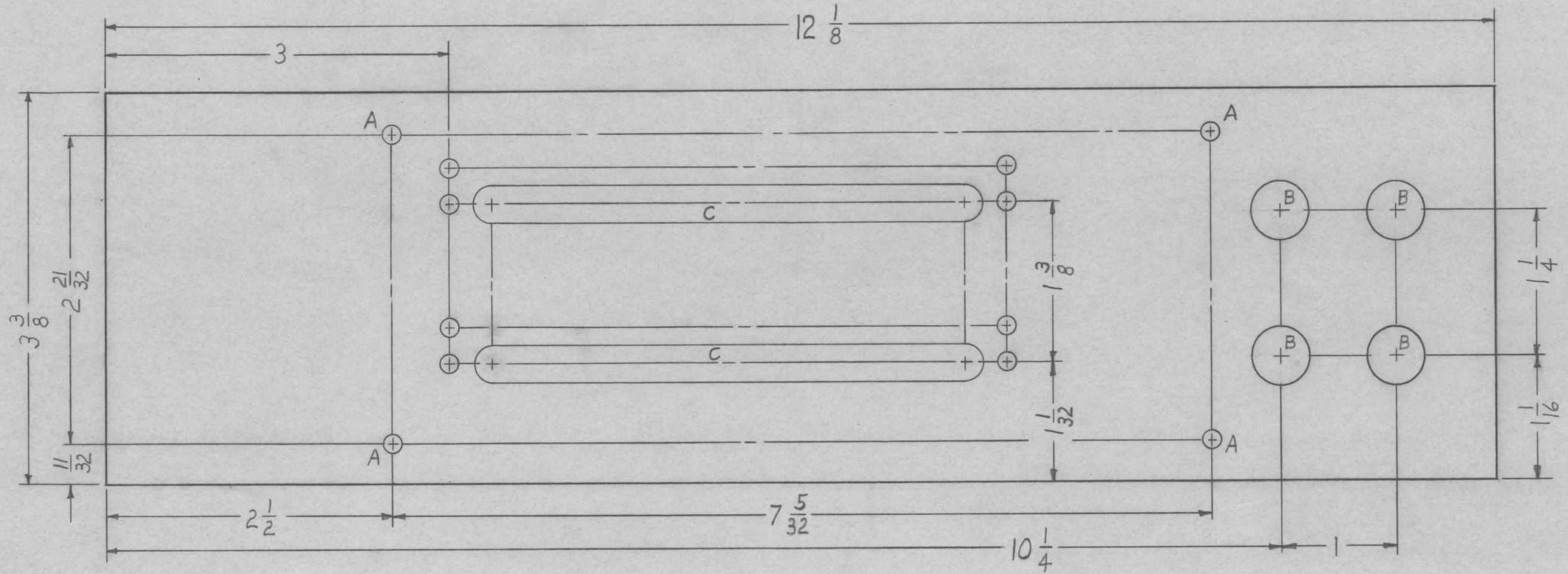


REVISIONS							
ZONE	LTR	DESCRIPTION	DATE	E.M.N.NO	DRAFT	CHKD	APPD
	X	EXPERIMENTAL RELEASE	4-13-67		L.A.K		
	Ø	ORIG RELEASE FOR PROD.	4-14-67		RG		



HOLE	DESCRIPTION	REQ
A	11/64 DIA.	4
B	1/2 DIA.	4
C	SEE DETAIL	2

REF: LD1546

REQ'D	ITEM	PART NUMBER	DESCRIPTION	SYM.
LIST OF MATERIAL				

QTY / UNIT	MODEL USED ON	ASS'Y NO.
1	SBT-1KPA2	AF-108
1	SBT-1KPA1	AF-108

**APPLICATION**

S401-451	CODE A
----------	-----------

UNLESS OTHERWISE SPECIFIED DIMENSIONS ARE IN INCHES AND INCLUDE CHEMICALLY APPLIED OR PLATED FINISHES

DECIMALS .X ± .05 .XX ± .01 .XXX ± .005

FRACTIONS 1/64 ANGLES 0° -30'

TOLS.

MATERIAL 1/4 THK XXXP PHENOLIC

FINISH 5197 BLACK SEMI-GLOSS BAKING ENAMEL

FINAL APPROVAL	DATE
MECH. DES.	DATE
ELECT. DES.	DATE
CHECKED	DATE
DRAWN	DATE

<b>THE TECHNICAL MATERIEL CORP.</b> MAMARONECK, NEW YORK			
PANEL, PATCH			
SIZE	CODE IDENT. NO.	DWG NO.	ISSUE
B	82679	PX1009	Ø
SCALE	M/L		SHEET OF

**NOTICE TO PERSONS RECEIVING THIS DRAWING**

THE TECHNICAL MATERIEL CORPORATION claims proprietary right in the material disclosed hereon. This drawing is issued in confidence for engineering information only and may not be reproduced or used to manufacture anything shown hereon without permission from THE TECHNICAL MATERIEL CORPORATION to the user. This drawing is loaned for mutual assistance and is subject to recall at any time.