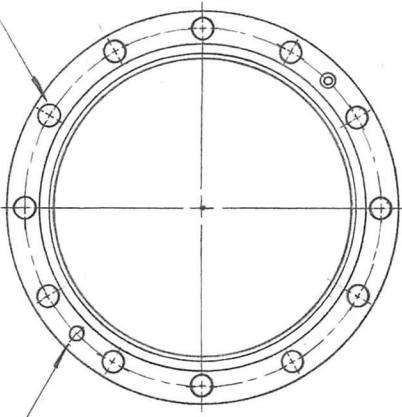


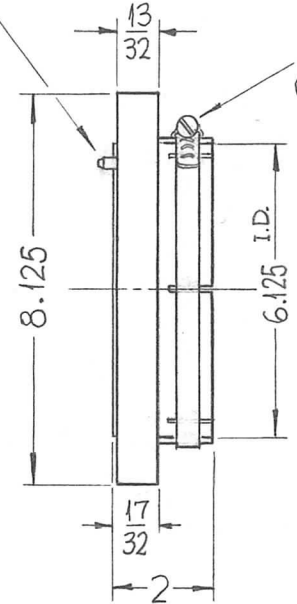
REQ. PER UNIT	USED ON			PO-301	O
	MODEL	ASS'Y. NO.	DATE		
1	GPT-200K	AX-397	1-15-64		

(12) .406 DIA. HOLES  
EQUALLY SPACED ON  
7.375 DIA.



1/4 DIA. ALIGNMENT HOLE

ALIGNMENT PIN



CU-129-21SS  
(SUPPLIED WITH ITEM)

NOTE:  
DIMENSIONS FOR REF. ONLY

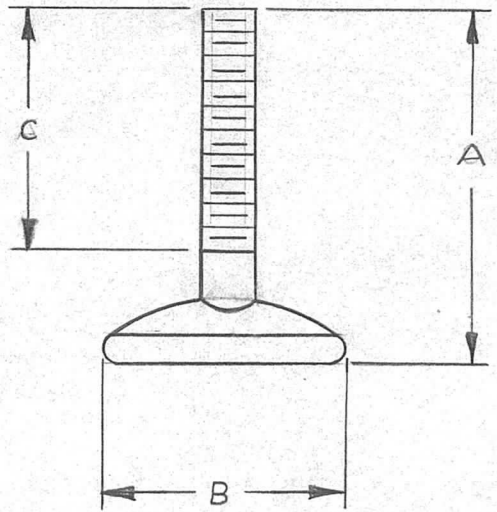
REF. ID-292

						REQ. ITEM	PART NO.	F. BUDETTI	DESCRIPTION	SYMBOL	
									<b>THE TECHNICAL MATERIEL CORP.</b> MAMARONECK, NEW YORK		
									ADAPTOR LINE R.F. TRANSMISSION		
O	ORIGINAL RELEASE FOR PRODUCTION		5-27-64	O	A.M.						
SYM	DESCRIPTION	DATE	CH. NO.	DRAFTS	CHECKER	ENG. APP.	MATERIAL				
	UNLESS OTHERWISE SPECIFIED DIMENSIONS ARE IN INCHES AND INCLUDE CHEMICALLY APPLIED OR PLATED FINISHES		SCALE			1/4 = 1			SRG	aa	RAC
	TOLERANCES		CODE	S401-276(P/O 601-083)			TYPE & TEMPER	HEAT TREAT. SPEC.	DRAWN	CHECKED	FINAL APPROVAL
	DECIMALS .X ± .05 .XX ± .01 .XXX ± .005	FRACTIONS ± 1/64 ANGLES ± 0° 30'	C						<i>[Signature]</i>	<i>[Signature]</i>	PO-301   O
									ELEC. DES. APP.	MECH. DES. APP.	

REQ. PER UNIT	USED ON			PO-308	O
	MODEL	ASS'Y. NO.	DATE		

TMC NUMBER	CATALOG NUMBER	A OVER ALL HEIGHT	B BASE DIAMETER	C THREAD LENGTH	THREAD TYPE
PO-308-1	62-003	1 13/16	1 5/8	1 1/4	3/8-16
PO-308-2	62-004	1 13/16	2	1 1/4	3/8-16
PO-308-3	62-004A	2 9/16	2	2	3/8-16
PO-308-4	62-004B	4 9/16	2	4	3/8-16

NOTE:  
THREADED PORTION PIVOTS IN BASE.



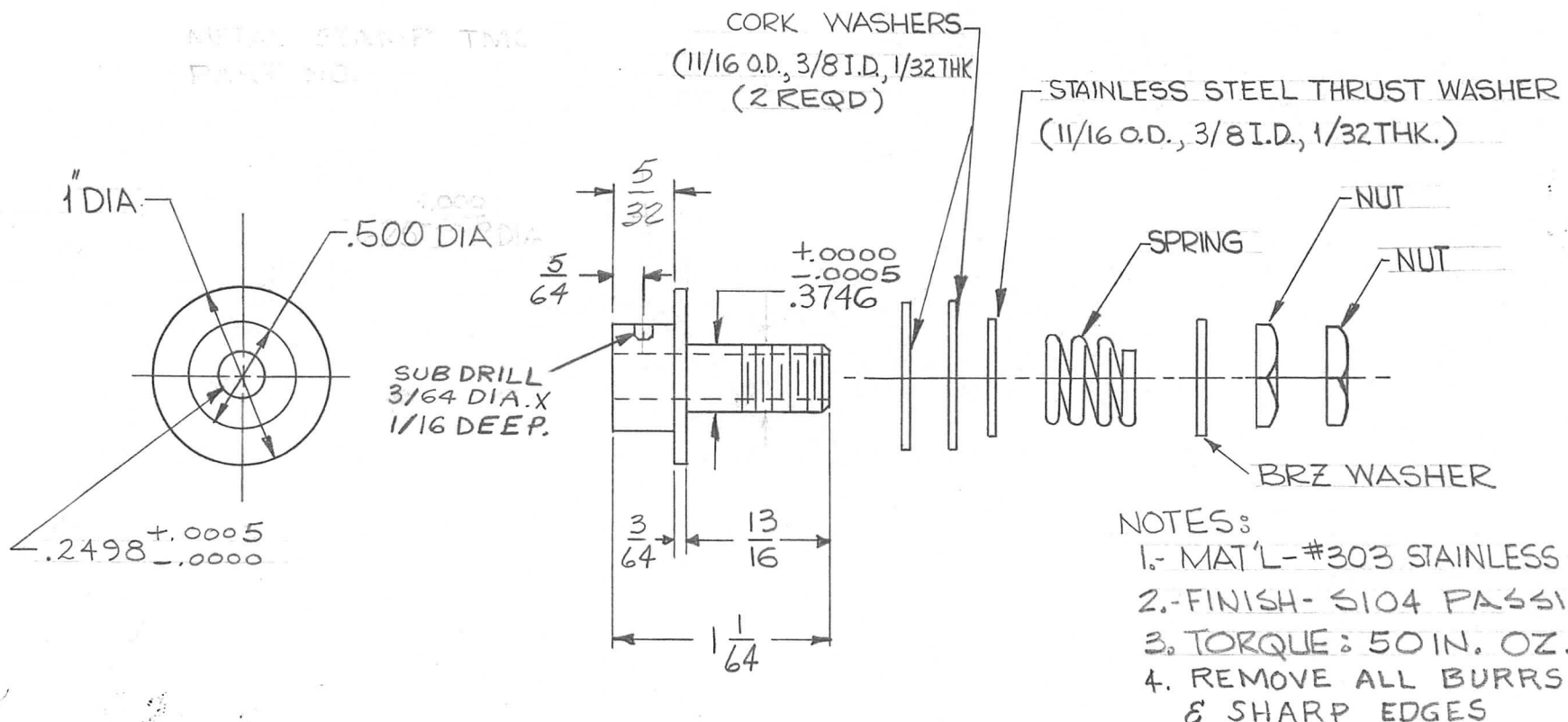
REQ.	ITEM	PART NO.	DESCRIPTION				SYMBOL
		//	THE TECHNICAL MATERIEL CORP. MAMARONECK, NEW YORK				
		STOCK SIZE	LEG, ELECTRICAL EQUIPMENT				
		STEEL					
		MATERIAL					
		//	A.MARINO	@ 3-24-64	3-31-64		
UNLESS OTHERWISE SPECIFIED DIMENSIONS ARE IN INCHES AND INCLUDE CHEMICALLY APPLIED OR PLATED FINISHES		SCALE	TYPE & TEMPER	HEAT TREAT. SPEC.	DRAWN	CHECKED	FINAL APPROVAL
DECIMALS .X ± .05 .XX ± .01 .XXX ± .005	TOLERANCES	FRACTIONS ± 1/64 ANGLES ± 0° 30'	Zinc Plate, 0003		YC 3/31/64	M.H.S.	PO-308
		CODE C	FINISH & SPEC. NO. S 401-275		ELEC. DES. APP.	MECH. DES. APP.	O

O ORIGINAL RELEASE FOR PRODUCTION 3/25/64

REQ. PER UNIT	USED ON		
	MODEL	ASS'Y. NO.	DATE
1	HFR-2	A3624	4-13-64
1	HFRR-2	A3625	9-11-64

PO-310 A

ORIGINAL PART TMC  
PART NO.



- NOTES:
1. MAT'L - #303 STAINLESS STEEL
  2. FINISH - S104 PASSIVATE
  3. TORQUE: 50 IN. OZ.
  4. REMOVE ALL BURRS & SHARP EDGES

A	5/64 SUB DR. NOTE ADDED	11/5/65	15/01	A.V.V.	<i>[Signature]</i>	
Ø	ORIGINAL RELEASE FOR PRODUCTION	9-11-64	Ø	P.F.		
X2	TITLE WAS CLUTCH, SLIP	9-10-64		P.F.		
X1	5/32 WAS 1/4	4/14/64	-#	<i>[Signature]</i>		
X	EXP. RELEASE	4/13/64	-#	<i>[Signature]</i>		
SYM	DESCRIPTION	DATE	CH. NO.	DRAFTS	CHECKER	ENG. APP.
UNLESS OTHERWISE SPECIFIED DIMENSIONS ARE IN INCHES AND INCLUDE CHEMICALLY APPLIED OR PLATED FINISHES		SCALE				#
DECIMALS .X ± .05 .XX ± .01 .XXX ± .005	TOLERANCES	FRACTIONS ± 1/64 ANGLES ± 0° 30'	CODE A	5401-196 (N112-4)		

REQ. ITEM	PART NO.	T. KRUY	DESCRIPTION	E3112B	SYMBOL
#		THE TECHNICAL MATERIEL CORP. MAMARONECK, NEW YORK			
SEE NOTES		CLUTCH, FRICTION			
MATERIAL					
SEE NOTES	#	<i>[Signature]</i>			<i>[Signature]</i>
TYPE & TEMPER	HEAT TREAT. SPEC.	DRAWN	CHECKED	FINAL APPROVAL	
SEE NOTES			<i>T. Kruy</i>	PO-310	A
FINISH & SPEC. NO.		ELEC. DES. APP.	MECH. DES. APP.		

APPLICATION			REVISIONS						
QTY	MODEL USED ON	ASS'Y NO.	LTR	DESCRIPTION	DATE	E.M.N.NO	DRAFT	CHKD	APPD
	HFSR-4		X	EXPERIMENTAL RELEASE	3/7/68			C.V.	<i>[Signature]</i>
	HFRR-4		Ø	ORIG. RELEASE FOR PROD	11/5/68	Ø		R.G.	<i>[Signature]</i>
	MSAR-4								

MFGR (TMC CODE NO): S401-314  
MFGR PART NUMBER: 1/2 3327-B-A230

ELECTRICAL SPECS

RATED DC SPARKOVER: 230 ±15% V  
SPARKOVER SURGE VOLTAGE: < 3K V  
SURGE DISCHARGE CURRENT: 5K AMP  
AC DISCHARGE CURRENT: 5 AMP  
INSULATION RESISTANCE @100 VDC: > 10<sup>10</sup> OHM  
CAPACITANCE: 2pF  
BODY: 3/8 D X 1/4 WIDE  
LEADS: #20 AWG, 3/4 LONG

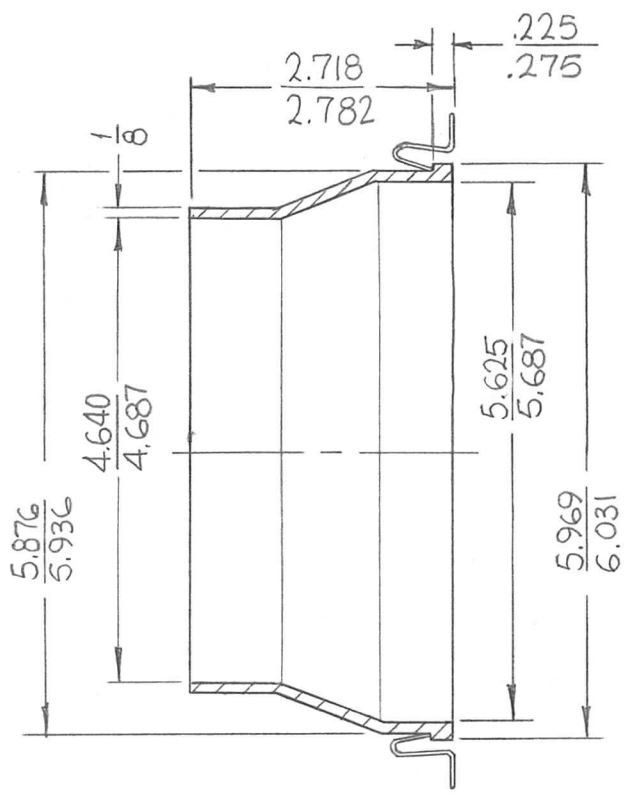
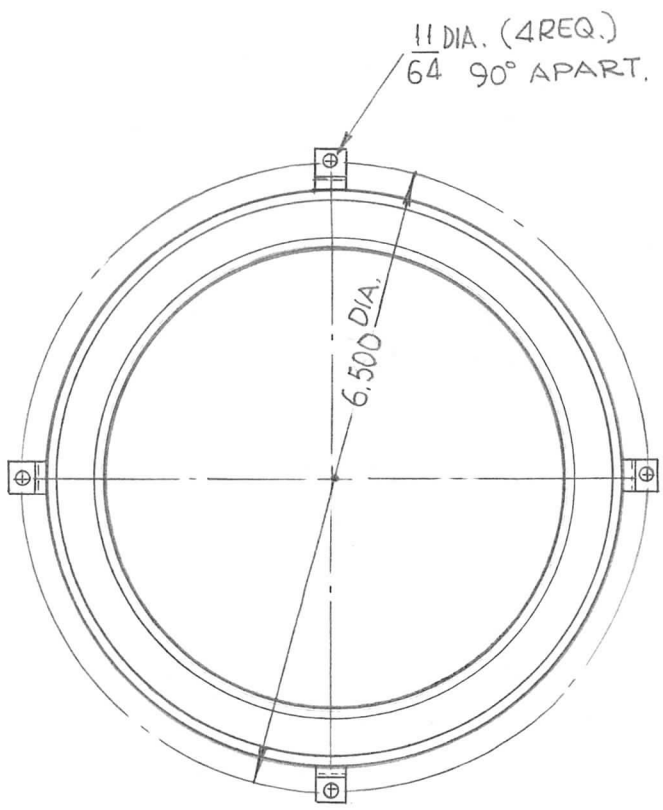
PURCHASING NOTE: VENDOR MUST INCLUDE THE FOLLOWING INFORMATION WHEN SHIPPING THIS ITEM TO TMC.

1. AN OUTLINE DRAWING OR ILLUSTRATION FROM CATALOG SHOWING ALL PERTINENT DIMENSIONS AND TOLERANCES.
2. ELECTRICAL AND/OR MECHANICAL SPECIFICATIONS AS SHOWN IN THEIR CATALOGS.

UNLESS OTHERWISE SPECIFIED DIMENSIONS ARE IN INCHES AND INCLUDE CHEMICALLY APPLIED OR PLATED FINISHES		REQ'D	ITEM	PART NUMBER	DESCRIPTION	SYM.	
<small>DECIMALS</small> .X ± .05 .XX ± .01 .XXX ± .005 <small>FRACTIONS</small> 1/64 <small>TOLS.</small> ANGLES 0° - 30'		LIST OF MATERIAL					
MATERIAL		FINAL APPROVAL <i>[Signature]</i>		DATE	<b>THE TECHNICAL MATERIEL CORP.</b> MAMARONECK, NEW YORK  VOLTAGE PROTECTOR, SURGE		
FINISH		MECH. DES. <i>[Signature]</i>		DATE			
		ELECT. DES. <i>[Signature]</i>		DATE 11/5/68			
		CHECKED <i>[Signature]</i>		DATE 11/5/68			
		DRAWN <i>[Signature]</i>		DATE 3-8-68			
NOTICE TO PERSONS RECEIVING THIS DRAWING THE TECHNICAL MATERIEL CORPORATION claims proprietary right in the material disclosed hereon. This drawing is issued in confidence for engineering information only and may not be reproduced or used to manufacture anything shown hereon without permission from THE TECHNICAL MATERIEL CORPORATION to the user. This drawing is loaned for mutual assistance and is subject to recall at any time.				SIZE <b>A</b>	CODE IDENT. NO. <b>82679</b>	DWG NO. PO 315	ISSUE <i>[Signature]</i>
				SCALE	SHEET		OF



REQ. PER UNIT	USED ON			PO 313	Ø
	MODEL	ASS'Y. NO.	DATE		
1	RFTA-1		9-30-65		

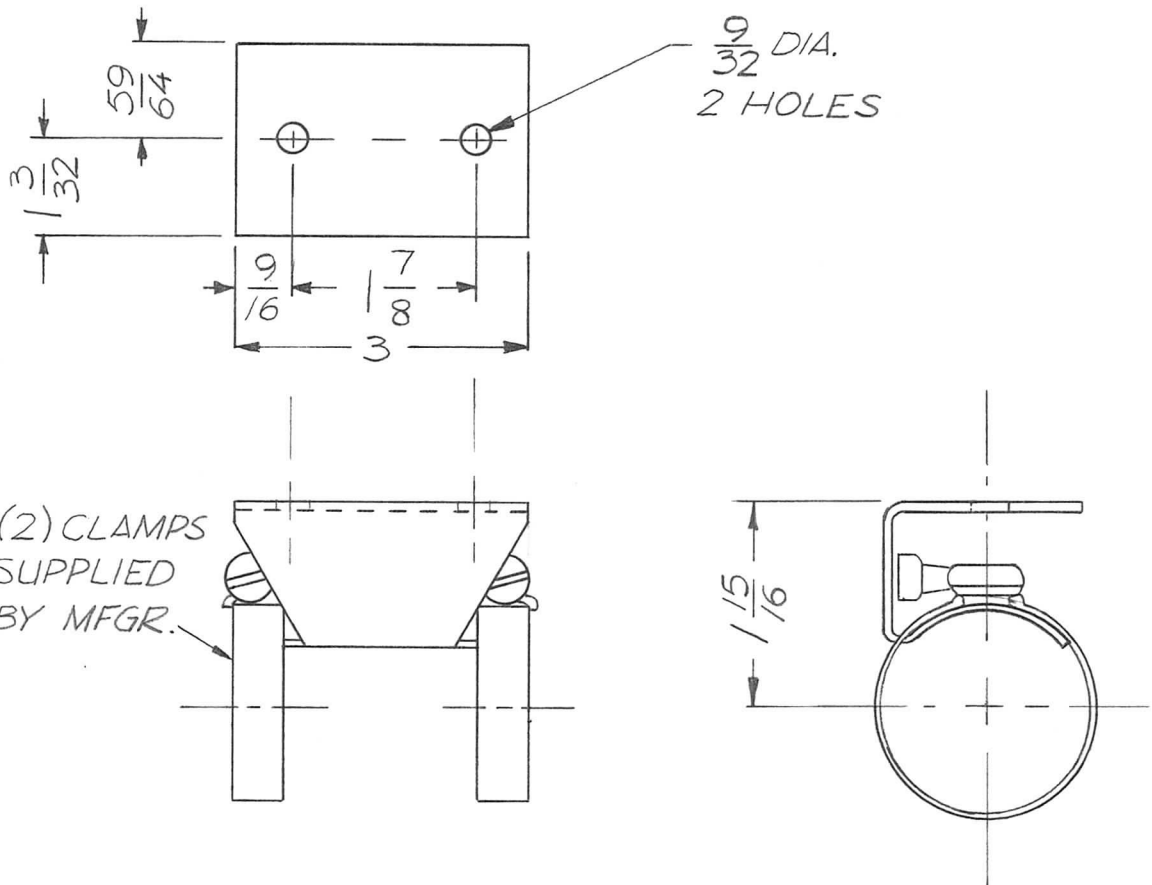


SPECIFICATIONS:

MATERIAL:  
 CHIMNEY: POLYESTER  
 PREMIX COMPOUND (RED),  
 FIBERGLASS PER MIL-G  
 -1140C, RESIN PER MIL-R  
 - 7575.  
 MAX. OPERATING TEMP 125°C.  
 CHIMNEY CLIPS: BERYL,  
 COPPER, HEAT TREATED  
 AND CADMIUM PLATED.

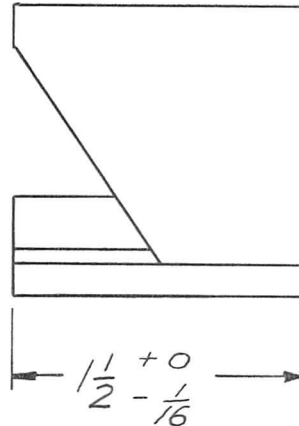
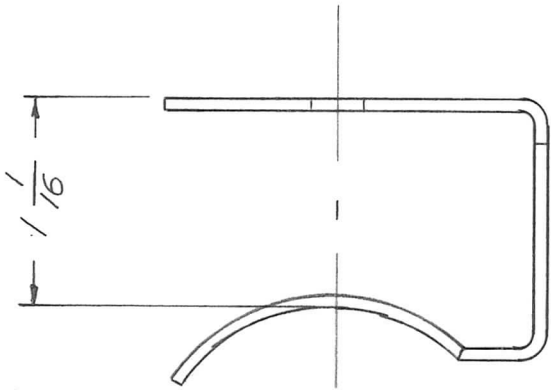
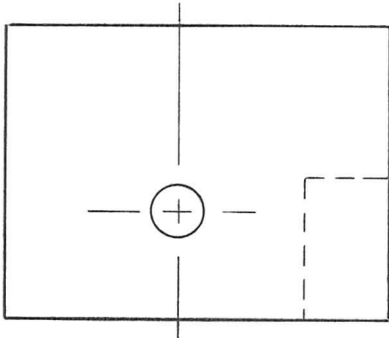
SYM	DESCRIPTION	DATE	CH. NO.	DRAFTS	CHECKER	ENG. APP.	REQ. ITEM	PART NO.	F. BUDETTI	DESCRIPTION	SYMBOL
Ø	ORIG. RELEASE	11-13-68	Ø	R.G.		<i>[Signature]</i>			THE TECHNICAL MATERIEL CORP. MAMARONECK, NEW YORK		
X <sub>2</sub>	COMPLETELY REVISED	9-30-65	X <sub>2</sub>			<i>[Signature]</i>		STOCK SIZE	CHIMNEY, TUBE		
X <sub>1</sub>	ADDED MFG. CAT. NO	8-26-65	X <sub>1</sub>			<i>[Signature]</i>		SEE SPECS.			
UNLESS OTHERWISE SPECIFIED DIMENSIONS ARE IN INCHES AND INCLUDE CHEMICALLY APPLIED OR PLATED FINISHES							SCALE				
							1/2:1				
DECIMALS .X ± .05 .XX ± .01 .XXX ± .005							TOLERANCES				
FRACTIONS ± 1/64 ANGLES ± 0° 30'							CODE				
							C		S401-23 (SK-1426)		
							TYPE & TEMPER		DRAWN		MECH. DES. APP.
									<i>[Signature]</i>		<i>[Signature]</i>
							HEAT TREAT. SPEC.		CHECKED		FINAL APPROVAL
									<i>[Signature]</i>		<i>[Signature]</i>
							FINISH & SPEC. NO.		ELEC. DES. APP.		MECH. DES. APP.
									<i>[Signature]</i>		<i>[Signature]</i>
											PO 313
											Ø

APPLICATION			REVISIONS						
QTY	MODEL USED ON	ASS'Y NO.	LTR	DESCRIPTION	DATE	E.M.N.NO	DRAFT	CHKD	APPD
2	GPT 40 KEL	AS 142	X	EXP RELEASE	7/10/69		GE		
			Ø	ORIG RELEASE FOR PROD	7/14/69		CV		



UNLESS OTHERWISE SPECIFIED DIMENSIONS ARE IN INCHES AND INCLUDE CHEMICALLY APPLIED OR PLATED FINISHES		REQ'D ITEM	PART NUMBER	DESCRIPTION	SYM.
DECIMALS .X ± .05 .XX ± .01 .XXX ± .005	FRACTIONS 1/64 ANGLES 0° - 30'	<b>BUDETTI</b> <b>LIST OF MATERIAL</b> <b>THE TECHNICAL MATERIEL CORP.</b> <b>MAMARONECK, NEW YORK</b> <b>BRACKET, HANGER</b> <b>(1 5/8 COAXIAL)</b>			
MATERIAL	FINAL APPROVAL	DATE	<b>MECH. DES.</b> <b>ELECT. DES. AVC</b> <b>CHECKED</b> <b>DRAWN G. EVANGELIST</b>		
FINISH	DATE	DATE	<b>SIZE A</b> <b>CODE IDENT. NO. 82679</b> <b>DWG NO. PO 316</b> <b>ISSUE Ø</b>		
S401-48(1088)	DATE	DATE	<b>SCALE</b> <b>SHEET OF</b>		
<b>NOTICE TO PERSONS RECEIVING THIS DRAWING</b> <b>THE TECHNICAL MATERIEL CORPORATION</b> claims proprietary right in the material disclosed hereon. This drawing is issued in confidence for engineering information only and may not be reproduced or used to manufacture anything shown hereon without permission from <b>THE TECHNICAL MATERIEL CORPORATION</b> to the user. This drawing is loaned for mutual assistance and is subject to recall at any time.					

APPLICATION			REVISIONS						
QTY	MODEL USED ON	ASS'Y NO.	LTR	DESCRIPTION	DATE	E.M.N.NO	DRAFT	CHKD	APPD
2	GPT 40 KEL	AS 142	X	EXP RELEASE	7/10/69		GE		
			Ø	ORIG RELEASE FOR PROD	7/14/69		CV		

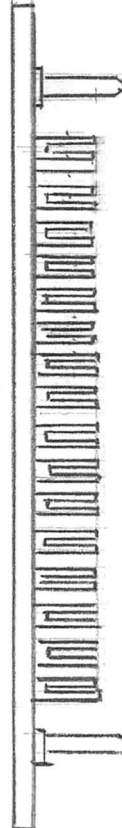
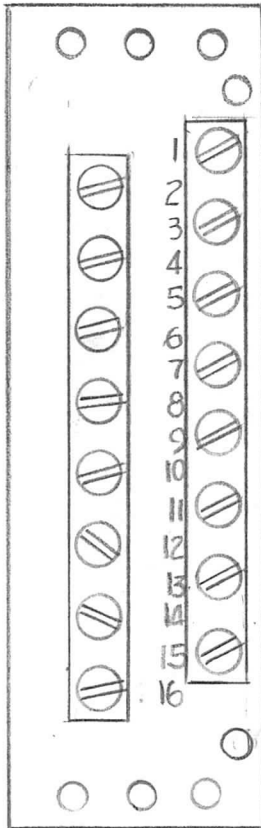


FINISH NOTE:  
 CAD. PLATE & IRIDITE  
 PER FED. SPEC. Q-Q-P-416a  
 TYPE II CLASS 2

UNLESS OTHERWISE SPECIFIED DIMENSIONS ARE IN INCHES AND INCLUDE CHEMICALLY APPLIED OR PLATED FINISHES	REQ'D	ITEM	PART NUMBER	DESCRIPTION	SYM.
DECIMALS .X ± .05 .XX ± .01 .XXX ± .005 FRACTIONS 1/64 ANGLES 0° - 30°				LIST OF MATERIAL	
MATERIAL				THE TECHNICAL MATERIEL CORP. MAMARONECK, NEW YORK	
FINISH SEE NOTE				BRACKET, EDGE HANGER, LEFT 1 5/8 COAXIAL	
S401-48 (560 141)					

NOTICE TO PERSONS RECEIVING THIS DRAWING THE TECHNICAL MATERIEL CORPORATION claims proprietary right in the material disclosed hereon. This drawing is issued in confidence for engineering information only and may not be reproduced or used to manufacture anything shown hereon without permission from THE TECHNICAL MATERIEL CORPORATION to the user. This drawing is loaned for mutual assistance and is subject to recall at any time.	SIZE A	CODE IDENT. NO. 82679	DWG NO. PO 317	ISSUE Ø
	SCALE		SHEET OF	

APPLICATION			REVISIONS						
QTY	MODEL USED ON	ASS'Y NO.	LTR	DESCRIPTION	DATE	E.M.N.NO	DRAFT	CHKD	APPD
11	AX5254	RCST-2	Ø	OZIG. REL. FOR PROD.	5/2/83		GDL		
11	AX5257	RCST-2							



D.A.Q.  
MFG. P/NO. 1816 TB

UNLESS OTHERWISE SPECIFIED DIMENSIONS ARE IN INCHES AND INCLUDE CHEMICALLY APPLIED OR PLATED FINISHES		REQ'D	ITEM	PART NUMBER	DESCRIPTION	SYM.	
		ENG. S. DEMARCO		LIST OF MATERIAL			
DECIMALS .X ± .05 .XX ± .01 .XXX ± .005 FRACTIONS 1/64 TOLS. ANGLES 0° - 30°		FINAL APPROVAL	DATE	<b>THE TECHNICAL MATERIEL CORP.</b> MAMARONECK, NEW YORK  TERMINAL BLOCK ASS'Y			
MATERIAL		MECH. DES.	DATE				
FINISH		ELECT. DES.	DATE				
		CHECKED	DATE				
		DRAWN GDL	DATE 7-16-82				
NOTICE TO PERSONS RECEIVING THIS DRAWING THE TECHNICAL MATERIEL CORPORATION claims proprietary right in the material disclosed hereon. This drawing is issued in confidence for engineering information only and may not be reproduced or used to manufacture anything shown hereon without permission from THE TECHNICAL MATERIEL CORPORATION to the user. This drawing is loaned for mutual assistance and is subject to recall at any time.				SIZE	CODE IDENT. NO.	DWG NO.	ISSUE
				A	82679	PO 344	Ø
				SCALE	SHEET		OF

APPLICATION			REVISIONS						
QTY	MODEL USED ON	ASSY NO.	LTR	DESCRIPTION	DATE	E.M.N.NO	DRAFT	CHKD	APPD
			Ø	ORIG RELEASE FOR PRODUCTION	6-13-72		CV		

MFR (TMC CODE NO.): S401-237

SERIES 2000 PLUGMOLD

WIRED SECTION, 2 WIRE, SINGLE CIRCUIT,

GROUNDING EACH SECTION FURNISHED WITH:

2 BLANK END FITTINGS - G2010B (P0331-1)

1 COUPLING - G2001 (P0333)

2 WIRE CONNECTORS - W30

TMC P/N	VENDORS P/N	LENGTH	OUTLETS	
			QTY	C TO C
P0330-1	G20G103	1 FT	4	3"
P0330-2	G20G306	3 FT	6	6"
P0330-3	G20G606	6 FT	12	6"

## STANDARD DRAWING

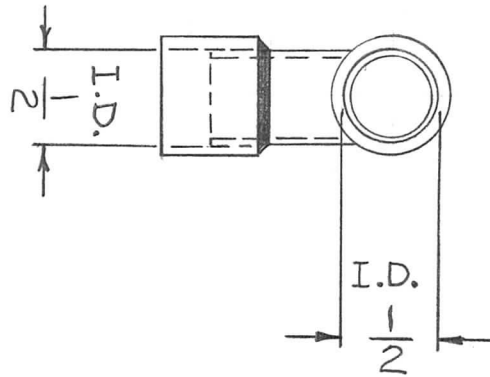
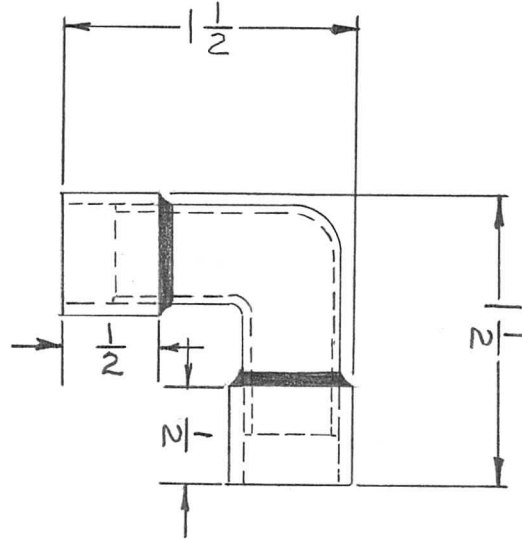
UNLESS OTHERWISE SPECIFIED DIMENSIONS ARE IN INCHES AND INCLUDE CHEMICALLY APPLIED OR PLATED FINISHES  DECIMALS      FRACTIONS .X ± .05      1/64 .XX ± .01      TOLS.      ANGLES .XXX ± .005      0° - 30'	REQ'D	ITEM	PART NUMBER	DESCRIPTION	SYM.		
	LIST OF MATERIAL						
	FINAL APPROVAL <i>[Signature]</i>		DATE	<b>THE TECHNICAL MATERIEL CORP.</b> MAMARONECK, NEW YORK  STRIP, AC			
	MECH. DES.		DATE				
	ELECT. DES.		DATE				
CHECKED		DATE					
MATERIAL	DRAWN		CV	DATE			
FINISH							
NOTICE TO PERSONS RECEIVING THIS DRAWING THE TECHNICAL MATERIEL CORPORATION claims proprietary right in the material disclosed hereon. This drawing is issued in confidence for engineering information only and may not be reproduced or used to manufacture anything shown hereon without permission from THE TECHNICAL MATERIEL CORPORATION to the user. This drawing is loaned for mutual assistance and is subject to recall at any time.				SIZE <b>A</b>	CODE IDENT. NO. <b>82679</b>	DWG NO. PO 330	ISSUE <i>[Symbol]</i>
SCALE			SHEET		OF		



APPLICATION				REVISIONS						
QTY	MODEL USED ON	ASS'Y NO.	LTR	DESCRIPTION	DATE	E.M.N.NO	DRAFT	CHKD	APPD	
2	PALAIOK	AX5084	Ø	ORIGINAL RELEASE	1/26/70		Ø			

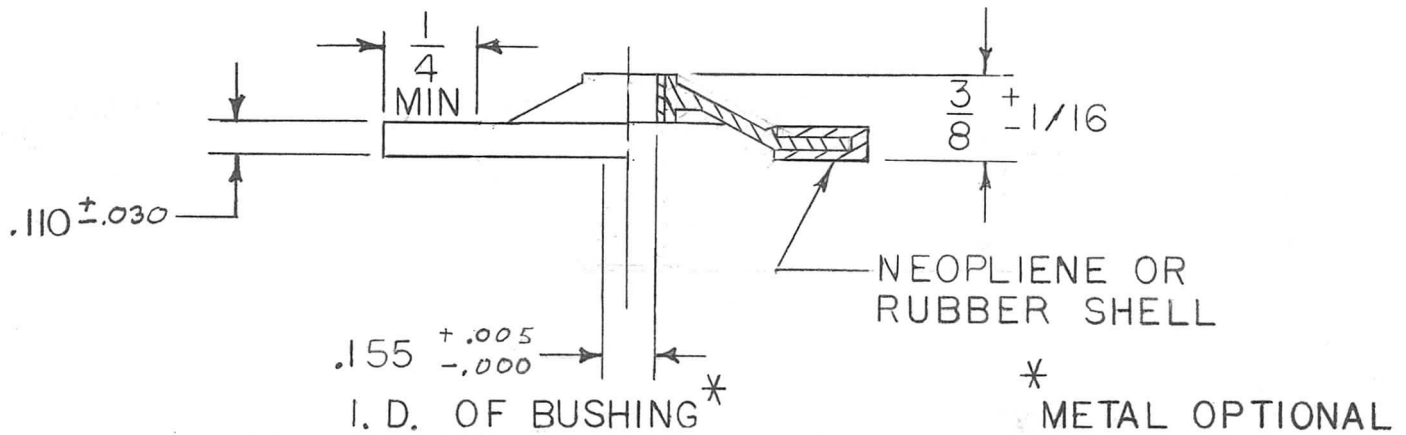
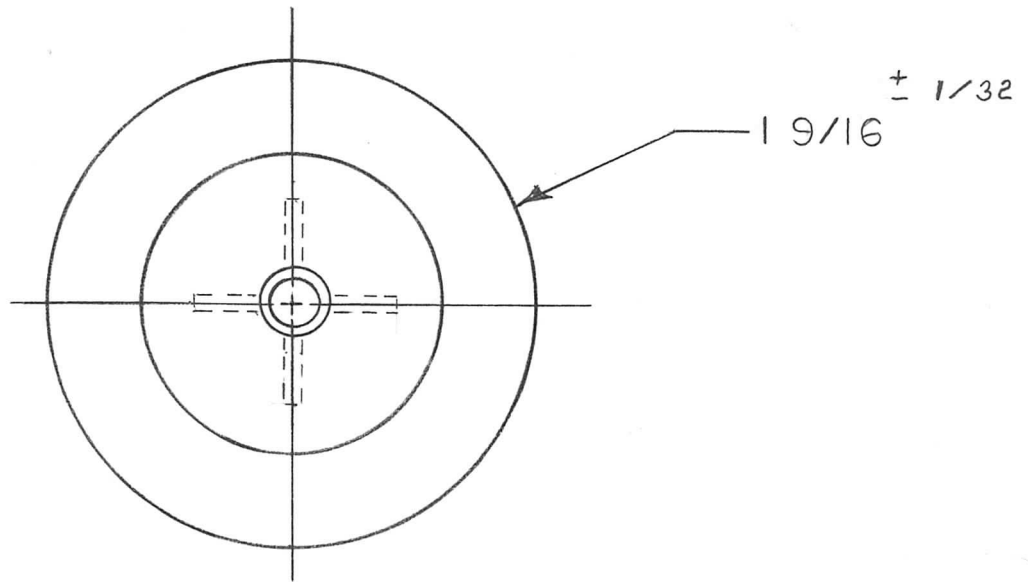
**NOTE # 1**

1/2" 90° COPPER ELBOW  
(COPPER PIPE)



UNLESS OTHERWISE SPECIFIED DIMENSIONS ARE IN INCHES AND INCLUDE CHEMICALLY APPLIED OR PLATED FINISHES		REQ'D	ITEM	PART NUMBER	DESCRIPTION	SYM.
DECIMALS: .X ± .05, .XX ± .01, .XXX ± .005 FRACTIONS: 1/64, ANGLES: 0° - 30'		F. BUDETTI		LIST OF MATERIAL		
MATERIAL: SEE NOTE # 1		FINAL APPROVAL	ØØØ	DATE	THE TECHNICAL MATERIEL CORP.	
FINISH: NATURAL		MECH. DES.	ALP. <i>ALP</i>	DATE	MAMARONECK, NEW YORK	
		ELECT. DES.		DATE	ELBOW PIPE, 90°	
		CHECKED		DATE		
		DRAWN	ALP.	DATE		
NOTICE TO PERSONS RECEIVING THIS DRAWING THE TECHNICAL MATERIEL CORPORATION claims proprietary right in the material disclosed hereon. This drawing is issued in confidence for engineering information only and may not be reproduced or used to manufacture anything shown hereon without permission from THE TECHNICAL MATERIEL CORPORATION to the user. This drawing is loaned for mutual assistance and is subject to recall at any time.					SIZE	ISSUE
					A	Ø
					CODE IDENT. NO.	
					82679	
					DWG NO.	
					PO324	
SCALE					SHEET	OF

APPLICATION			REVISIONS						
QTY	MODEL USED ON	ASS'Y NO.	LTR	DESCRIPTION	DATE	E.M.N.NO	DRAFT	CHKD	APPD
	HFTM-10K		X	EXP RELEASE	1-22-71		RJ		P.E.A.
			Ø	ORIG RELEASE FOR PROD	1/26/71		CV		P.E.A.
			A	REVISED & REDRAWN	5-6-71	20339	R F	W.	P.E.A.



UNLESS OTHERWISE SPECIFIED DIMENSIONS ARE IN INCHES AND INCLUDE CHEMICALLY APPLIED OR PLATED FINISHES		REQ'D	ITEM	PART NUMBER	DESCRIPTION	SYM.
LIST OF MATERIAL						
DECIMALS: .X ± .05, .XX ± .01, .XXX ± .005 FRACTIONS: 1/64 TOLS.: ANGLES 0° - 30'		FINAL APPROVAL: <i>P.E.A.</i> DATE: 1/24/71		<b>THE TECHNICAL MATERIEL CORP.</b> MAMARONECK, NEW YORK		
MATERIAL RUBBER, NEOPLIENE FINISH (1499-45) 5401-219		MECH. DES. DATE: 1/22/71		<b>IDLER &amp; DRIVE WHEEL</b>		
		ELECT. DES. DATE:				
		CHECKED DATE:				
		DRAWN: R. FORLANO DATE: 1-22-71				

<b>NOTICE TO PERSONS RECEIVING THIS DRAWING</b> THE TECHNICAL MATERIEL CORPORATION claims proprietary right in the material disclosed hereon. This drawing is issued in confidence for engineering information only and may not be reproduced or used to manufacture anything shown hereon without permission from THE TECHNICAL MATERIEL CORPORATION to the user. This drawing is loaned for mutual assistance and is subject to recall at any time.				SIZE <b>A</b>	CODE IDENT. NO. <b>82679</b>	DWG NO. <b>YPO 325</b>	ISSUE <b>A</b>
				SCALE <b>2/1</b>	SHEET <b>1</b> OF <b>1</b>		

APPLICATION

REVISIONS

QTY	MODEL USED ON	ASS'Y NO.	LTR	DESCRIPTION	DATE	E.M.N.NO	DRAFT	CHKD	APPD
			Ø	ORIG RELEASE FOR PRODUCTION	6/13/72		CV		

MFR (TMC CODE NO.): S401-237

SERIES 2000 PLUG MOLD

END FITTING

TMC P/N	VENDOR P/N	DESCRIPTION
P0331-1	G2010B	END FITTING, BLANK
P0331-2	G2010A	END FITTING, ENTRANCE

STANDARD DRAWING

UNLESS OTHERWISE SPECIFIED DIMENSIONS ARE IN INCHES AND INCLUDE CHEMICALLY APPLIED OR PLATED FINISHES DECIMALS      FRACTIONS .X ± .05      1/64 .XX ± .01      TOLS.      ANGLES .XXX ± .005      0° .30'	REQ'D	ITEM	PART NUMBER	DESCRIPTION	SYM.		
	LIST OF MATERIAL						
MATERIAL	FINAL APPROVAL	DATE	<b>THE TECHNICAL MATERIEL CORP.</b> MAMARONECK, NEW YORK  FITTING END				
FINISH	MECH. DES.	DATE					
	ELECT. DES.	DATE					
	CHECKED	DATE					
	DRAWN	DATE					
NOTICE TO PERSONS RECEIVING THIS DRAWING THE TECHNICAL MATERIEL CORPORATION claims proprietary right in the material disclosed hereon. This drawing is issued in confidence for engineering information only and may not be reproduced or used to manufacture anything shown hereon without permission from THE TECHNICAL MATERIEL CORPORATION to the user. This drawing is loaned for mutual assistance and is subject to recall at any time.				SIZE	CODE IDENT. NO.	DWG NO.	ISSUE
				A	82679	PO 331	Ø
				SCALE		SHEET	OF

QTY	MODEL USED ON	ASSY NO.	LTR	DESCRIPTION	DATE	E.M.N.NO	DRAFT	CHKD	APPD
			Ø	ORIG RELEASE FOR PRODUCTION	6/13/72		CV		

MFR (TMC CODE NO.): S401-237

SERIES 2000 PLUG MOLD

GROUND CLAMP

2009

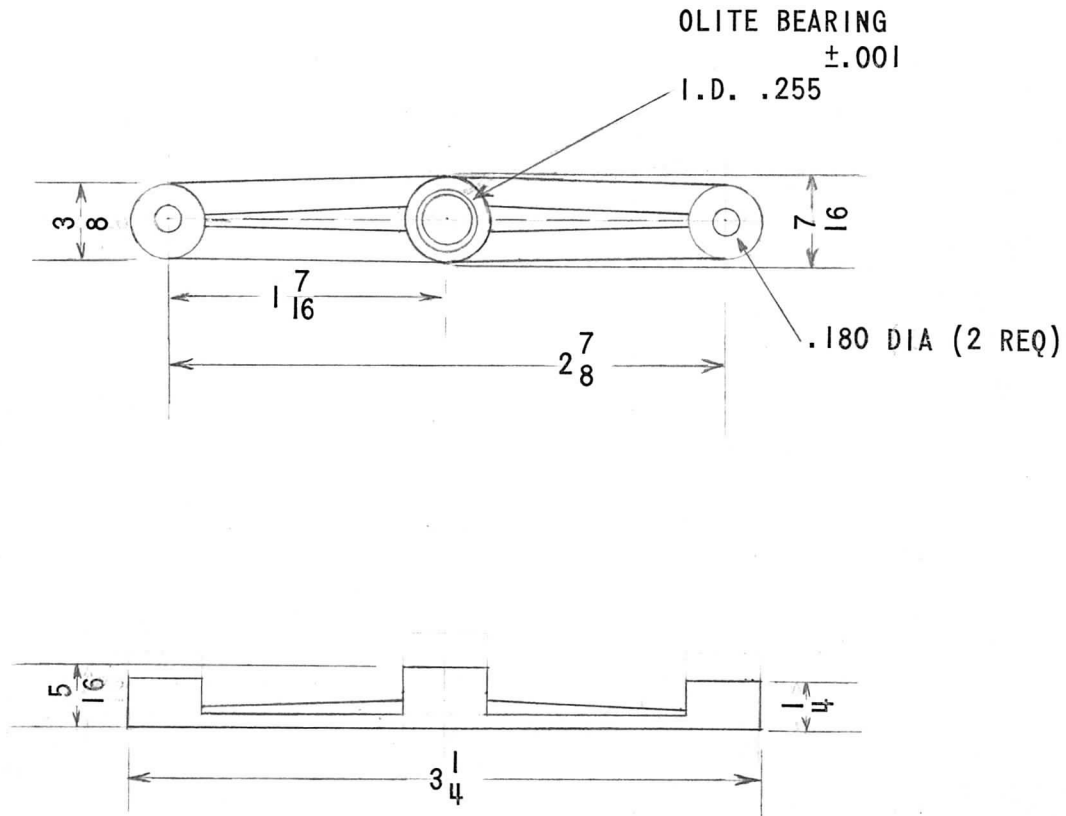
**STANDARD DRAWING**

UNLESS OTHERWISE SPECIFIED DIMENSIONS ARE IN INCHES AND INCLUDE CHEMICALLY APPLIED OR PLATED FINISHES  DECIMALS      FRACTIONS .X ± .05      1/64 .XX ± .01      TOLS.      ANGLES .XXX ± .005      0° -30'	REQ'D	ITEM	PART NUMBER	DESCRIPTION	SYM.		
	LIST OF MATERIAL						
	FINAL APPROVAL <i>[Signature]</i>		DATE	<b>THE TECHNICAL MATERIEL CORP.</b> MAMARONECK, NEW YORK  CLAMP, GND			
	MECH. DES.		DATE				
	ELECT. DES.		DATE				
CHECKED      MFR		DATE					
MATERIAL	DRAWN <i>[Signature]</i>		DATE				
NOTICE TO PERSONS RECEIVING THIS DRAWING THE TECHNICAL MATERIEL CORPORATION claims proprietary right in the material disclosed hereon. This drawing is issued in confidence for engineering information only and may not be reproduced or used to manufacture anything shown hereon without permission from THE TECHNICAL MATERIEL CORPORATION to the user. This drawing is loaned for mutual assistance and is subject to recall at any time.				SIZE <b>A</b>	CODE IDENT. NO. <b>82679</b>	DWG NO. PO 332	ISSUE <i>[Signature]</i>
SCALE			SHEET		OF		

APPLICATION			REVISIONS						
QTY	MODEL USED ON	ASS'Y NO.	LTR	DESCRIPTION	DATE	E.M.N.NO	DRAFT	CHKD	APPD
	AX664		X	EXPERIMENTAL RELEASE	9/24/68		C.V.		
			Ø	ORIG RELEASE FOR PROD	10/10/68		C.V.		

MFR (TMC CODE NO.): S401-113

MFR PART NUMBER: M-20382-102



NOTE: ALL FRACTIONAL DIMENSIONS ARE FOR REFERENCE ONLY

MATERIAL: ALUMINUM DIE CASTING ALLOY A94

FINISH: GRAY BLACK ANODIZED

UNLESS OTHERWISE SPECIFIED DIMENSIONS ARE IN INCHES AND INCLUDE CHEMICALLY APPLIED OR PLATED FINISHES		REQ'D	ITEM	PART NUMBER	DESCRIPTION	SYM.
DECIMALS .X ± .05 .XX ± .01 .XXX ± .005	FRACTIONS 1/64 ANGLES 0° - 30°	LIST OF MATERIAL				
MATERIAL	SEE NOTE	FINAL APPROVAL		DATE	<b>THE TECHNICAL MATERIEL CORP.</b> MAMARONECK, NEW YORK  <b>BRACKET, RETAINING, BANDSWITCH</b>	
FINISH	SEE NOTE	MECH. DES.	DATE			
		ELECT. DES.	DATE			
		CHECKED	DATE			
		DRAWN	DATE			

NOTICE TO PERSONS RECEIVING THIS DRAWING  
**THE TECHNICAL MATERIEL CORPORATION** claims proprietary right in the material disclosed hereon. This drawing is issued in confidence for engineering information only and may not be reproduced or used to manufacture anything shown hereon without permission from **THE TECHNICAL MATERIEL CORPORATION** to the user. This drawing is loaned for mutual assistance and is subject to recall at any time.

SIZE	CODE IDENT. NO.	DWG NO.
A	82679	PO 322
SCALE		SHEET



APPLICATION

REVISIONS

QTY	MODEL USED ON	ASS'Y NO.	LTR	DESCRIPTION	DATE	E.M.N.NO	DRAFT	CHKD	APPD
			Ø	ORIG RELEASE FOR PRODUCTION	6-13/72		CV		

MFR (TMC CODE NO.): S401-237

SERIES 2000 PLUG MOLD

COUPLING

2001

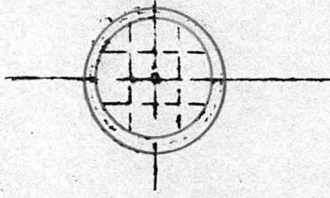
STANDARD DRAWING

UNLESS OTHERWISE SPECIFIED DIMENSIONS ARE IN INCHES AND INCLUDE CHEMICALLY APPLIED OR PLATED FINISHES		REQ'D	ITEM	PART NUMBER	DESCRIPTION	SYM.	
DECIMALS: .X ± .05, .XX ± .01, .XXX ± .005 FRACTIONS: 1/64 TOLS. ANGLES: 0° .30'		LIST OF MATERIAL					
MATERIAL		FINAL APPROVAL	DATE	<b>THE TECHNICAL MATERIEL CORP.</b> MAMARONECK, NEW YORK  COUPLING, AC STRIP			
FINISH		MECH. DES.	DATE				
		ELECT. DES.	DATE				
		CHECKED	DATE				
		DRAWN	DATE				
NOTICE TO PERSONS RECEIVING THIS DRAWING THE TECHNICAL MATERIEL CORPORATION claims proprietary right in the material disclosed hereon. This drawing is issued in confidence for engineering information only and may not be reproduced or used to manufacture anything shown hereon without permission from THE TECHNICAL MATERIEL CORPORATION to the user. This drawing is loaned for mutual assistance and is subject to recall at any time.				SIZE	CODE IDENT. NO.	DWG NO.	ISSUE
				A	82679	PO 333	Ø
				SCALE	SHEET		OF

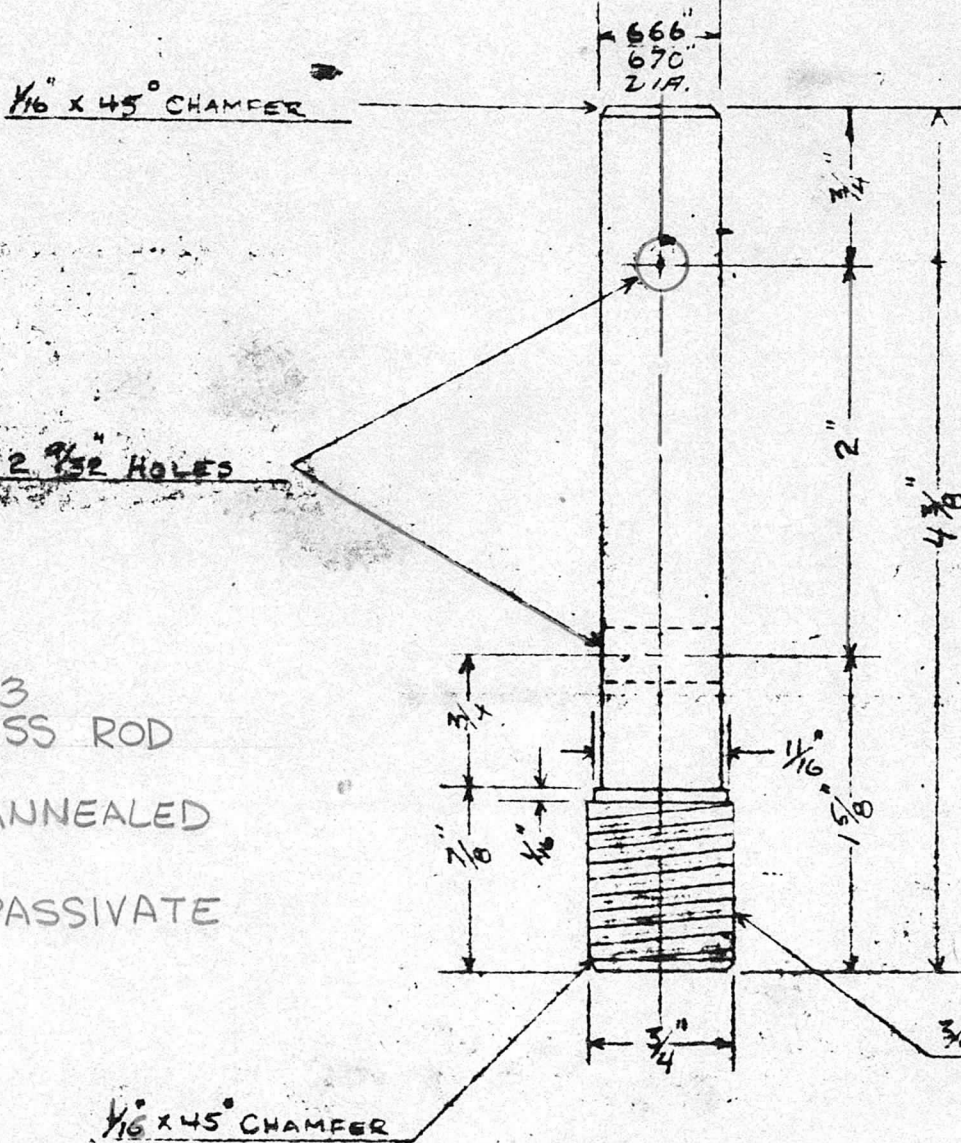
APPLICATION			REVISIONS						
QTY	MODEL USED ON	ASS'Y NO.	LTR	DESCRIPTION	DATE	E.M.N.NO	DRAFT	CHKD	APPD
	40K		Ø	ORIGINAL RELEASE	10-7-80	HH	dwj		
<p>Single Contact Kit for TMC Relay RL-138</p>									
<small>UNLESS OTHERWISE SPECIFIED DIMENSIONS ARE IN INCHES AND INCLUDE CHEMICALLY APPLIED OR PLATED FINISHES</small>		REQ'D	ITEM	PART NUMBER	DESCRIPTION	SYM.			
		<b>LIST OF MATERIAL</b>							
<small>DECIMALS      FRACTIONS</small> <small>.X ± .05      1/64</small> <small>.XX ± .01      TOLS.      ANGLES</small> <small>.XXX ± .005      0° - 30'</small>		FINAL APPROVAL	DATE	<b>THE TECHNICAL MATERIEL CORP.</b> MAMARONECK, NEW YORK  RL 138 Contact Kit Single					
MATERIAL	MECH. DES.	DATE							
FINISH	ELECT. DES.	DATE							
	CHECKED	DATE							
	DRAWN	DATE							
<small>NOTICE TO PERSONS RECEIVING THIS DRAWING</small> <small>THE TECHNICAL MATERIEL CORPORATION claims proprietary right in the material disclosed hereon. This drawing is issued in confidence for engineering information only and may not be reproduced or used to manufacture anything shown hereon without permission from THE TECHNICAL MATERIEL CORPORATION to the user. This drawing is loaned for mutual assistance and is subject to recall at any time.</small>				SIZE	CODE IDENT. NO.	DWG NO.	ISSUE		
				A	82679	PO 338	Ø		
				SCALE		SHEET	OF		

APPLICATION			REVISIONS						
QTY	MODEL USED ON	ASS'Y NO.	LTR	DESCRIPTION	DATE	E.M.N.NO	DRAFT	CHKD	APPD
				Ø ORIGINAL RELEASE	3-18-82				

MFG.  
PREMAX PRODUCTS DIVISION  
CHISHOLM-RYDER Co INC  
PART NO RA1353 S



43/64 DIA. INSULATOR  
POST FOR



NOTE:  
TYPE 303  
STAINLESS ROD  
C.D. & ANNEALED  
S104-PASSIVATE

UNLESS OTHERWISE SPECIFIED DIMENSIONS ARE IN INCHES AND INCLUDE CHEMICALLY APPLIED OR PLATED FINISHES		REQ'D	ITEM	PART NUMBER	DESCRIPTION	SYM.
LIST OF MATERIAL						
DECIMALS .X ± .05 .XX ± .01 .XXX ± .005		FRACTIONS 1/64 ANGLES 0°-30°		<b>THE TECHNICAL MATERIEL CORP.</b> MAMARONECK, NEW YORK  Post, ANTENNA		
MATERIAL SEE NOTE		FINAL APPROVAL SPM	DATE			
FINISH SEE NOTE		MECH. DES.	DATE			
		ELECT. DES.	DATE			
		CHECKED	DATE			
		DRAWN	DATE 3-18-82			

NOTICE TO PERSONS RECEIVING THIS DRAWING THE TECHNICAL MATERIEL CORPORATION claims proprietary right in the material disclosed hereon. This drawing is issued in confidence for engineering information only and may not be reproduced or used to manufacture anything shown hereon without permission from THE TECHNICAL MATERIEL CORPORATION to the user. This drawing is loaned for mutual assistance and is subject to recall at any time.				SIZE A	CODE IDENT. NO. 82679	DWG NO. PO342	ISSUE Ø
SCALE		SHEET		OF			

APPLICATION				REVISIONS					
QTY	MODEL USED ON	ASS'Y NO.	LTR	DESCRIPTION	DATE	E.M.N.NO	DRAFT	CHKD	APPD
	GPT-10K	BL105	Ø	ORIGINAL RELEASE FOR PRODUCTION	7-7-83	~	<del>AW</del>		

PO345-1 FAN GUARD FOR BL105  
IMC N° 65-118

PO345-2 FAN SHROUD FOR BL105  
IMC N° 64-16-1

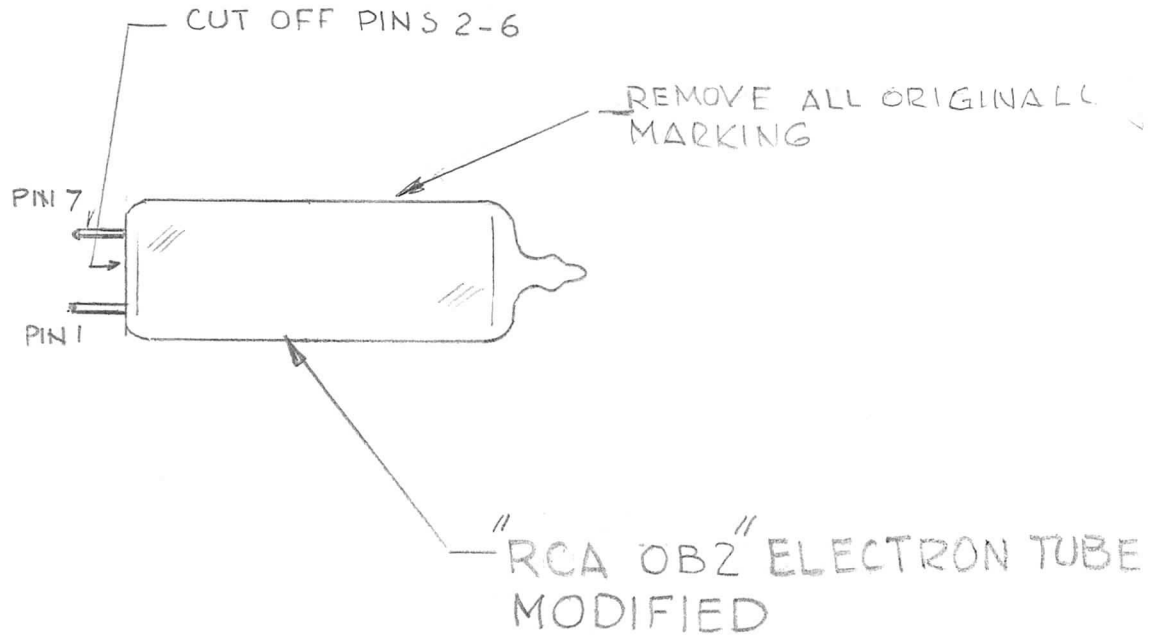
PO345-3 MOTOR MOUNTING BRACKET FOR BL105  
IMC N° 64-93-1

PO345-4 FAN BLADE FOR BL105  
IMC N° 68-25-8

UNLESS OTHERWISE SPECIFIED DIMENSIONS ARE IN INCHES AND INCLUDE CHEMICALLY APPLIED OR PLATED FINISHES		REQ'D	ITEM	PART NUMBER	DESCRIPTION	SYM.
DECIMALS .X ± .05 .XX ± .01 .XXX ± .005	FRACTIONS 1/64 ANGLES 0°-30'	LIST OF MATERIAL				
MATERIAL	MECH. DES.	DATE	<b>THE TECHNICAL MATERIEL CORP.</b> MAMARONECK, NEW YORK  <u>BL105 REPLACEMENT PARTS</u>			
FINISH	ELECT. DES.	DATE				
	CHECKED	DATE				
	DRAWN	DATE				

NOTICE TO PERSONS RECEIVING THIS DRAWING <b>THE TECHNICAL MATERIEL CORPORATION</b> claims proprietary right in the material disclosed hereon. This drawing is issued in confidence for engineering information only and may not be reproduced or used to manufacture anything shown hereon without permission from <b>THE TECHNICAL MATERIEL CORPORATION</b> to the user. This drawing is loaned for mutual assistance and is subject to recall at any time.	SIZE A	CODE IDENT. NO. 82679	DWG NO. PO 345	ISSUE Ø
	SCALE		SHEET OF	

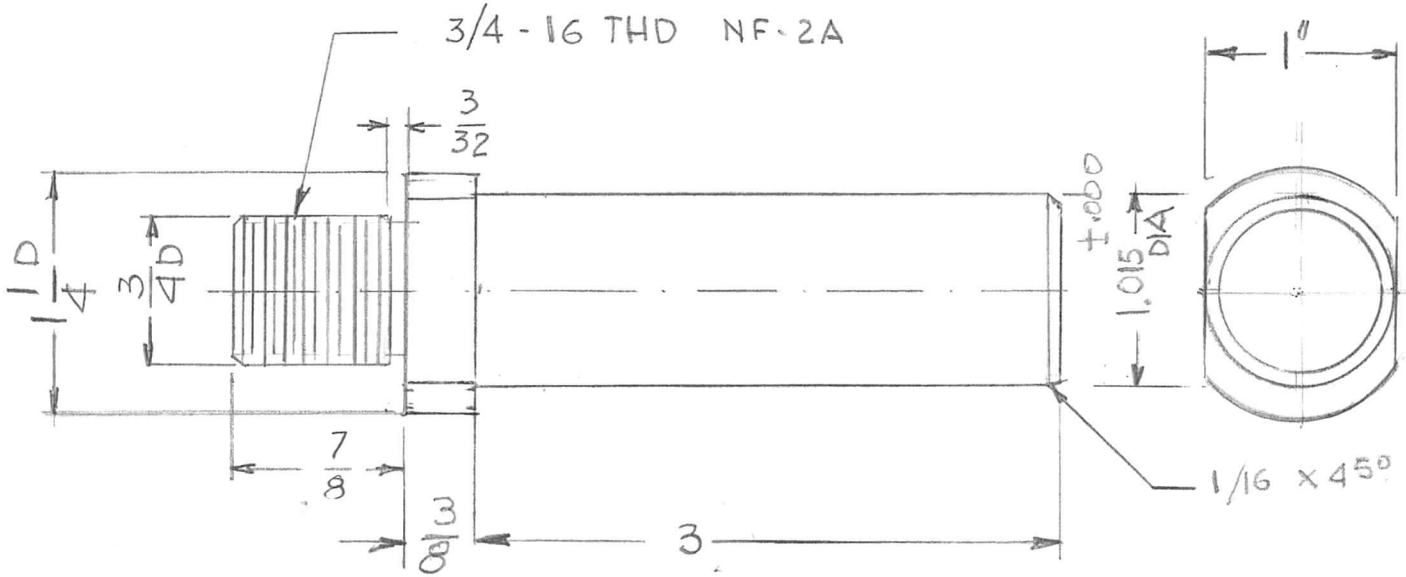
APPLICATION			REVISIONS						
QTY	MODEL USED ON	ASS'Y NO.	LTR	DESCRIPTION	DATE	E.M.N.NO	DRAFT	CHKD	APPD
1	SW 176	A1131-C	Ø	ORIGINAL RELEASE FOR PPOD	3/20/64		GDL		



UNLESS OTHERWISE SPECIFIED DIMENSIONS ARE IN INCHES AND INCLUDE CHEMICALLY APPLIED OR PLATED FINISHES		REQ'D	ITEM	PART NUMBER	DESCRIPTION	SYM.	
DECIMALS: .X ± .05, .XX ± .01, .XXX ± .005 FRACTIONS: 1/64 TOLS. ANGLES: 0° -30'		LIST OF MATERIAL					
MATERIAL	FINAL APPROVAL	ØØØ	DATE	<b>THE TECHNICAL MATERIEL CORP.</b> MAMARONECK, NEW YORK  ELECTRON TUBE			
FINISH	MECH. DES.		DATE				
	ELECT. DES.		DATE				
	CHECKED		DATE				
	DRAWN	G.D.L.	DATE				
<b>NOTICE TO PERSONS RECEIVING THIS DRAWING</b> THE TECHNICAL MATERIEL CORPORATION claims proprietary right in the material disclosed hereon. This drawing is issued in confidence for engineering information only and may not be reproduced or used to manufacture anything shown hereon without permission from THE TECHNICAL MATERIEL CORPORATION to the user. This drawing is loaned for mutual assistance and is subject to recall at any time.				SIZE	CODE IDENT. NO.	DWG NO.	ISSUE
				A	82679	PO 346	Ø
				SCALE		SHEET	OF

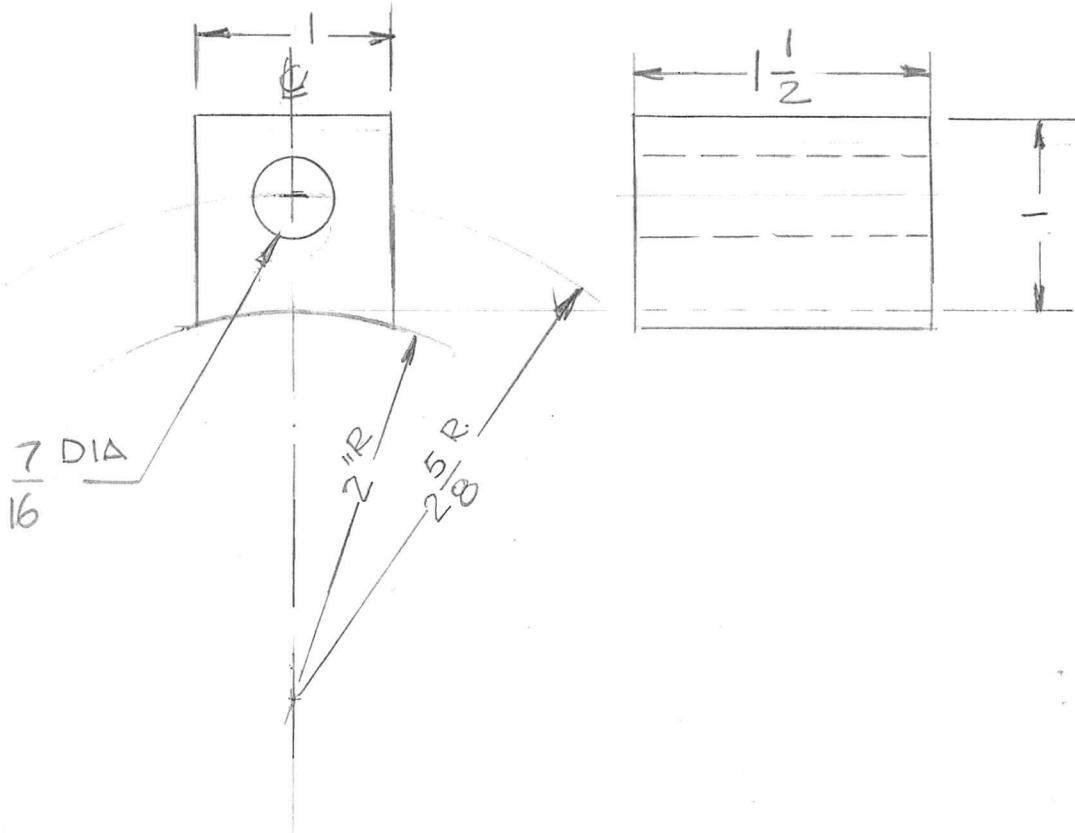


APPLICATION			REVISIONS						
QTY	MODEL USED ON	ASS'Y NO.	LTR	DESCRIPTION	DATE	E.M.N.NO	DRAFT	CHKD	APPD
1	AW 103		Ø	ORIGINAL Release FOR PROD.	7-27-88		GDL		



UNLESS OTHERWISE SPECIFIED DIMENSIONS ARE IN INCHES AND INCLUDE CHEMICALLY APPLIED OR PLATED FINISHES		REQ'D	ITEM	PART NUMBER	DESCRIPTION	SYM.
LIST OF MATERIAL						
DECIMALS .X ± .05 .XX ± .01 .XXX ± .005		FRACTIONS 1/64 ANGLES 0°-30'		FINAL APPROVAL	DATE	<b>THE TECHNICAL MATERIEL CORP.</b> MAMARONECK, NEW YORK  POST, ANTENNA AW 103 (VRA-9)
MATERIAL 1 1/64 DIA ALUM. 2024-T4		MECH. DES.	DATE	THE TECHNICAL MATERIEL CORP.		
FINISH S404		ELECT. DES.	DATE	MAMARONECK, NEW YORK		
YEL. IRIDITE		CHECKED	DATE			
		DRAWN G.D.L	DATE 6-29-88			
NOTICE TO PERSONS RECEIVING THIS DRAWING THE TECHNICAL MATERIEL CORPORATION claims proprietary right in the material disclosed hereon. This drawing is issued in confidence for engineering information only and may not be reproduced or used to manufacture anything shown hereon without permission from THE TECHNICAL MATERIEL CORPORATION to the user. This drawing is loaned for mutual assistance and is subject to recall at any time.				SIZE A	CODE IDENT. NO. 82679	DWG NO. PO 348
				SCALE 1:1	SHEET	OF

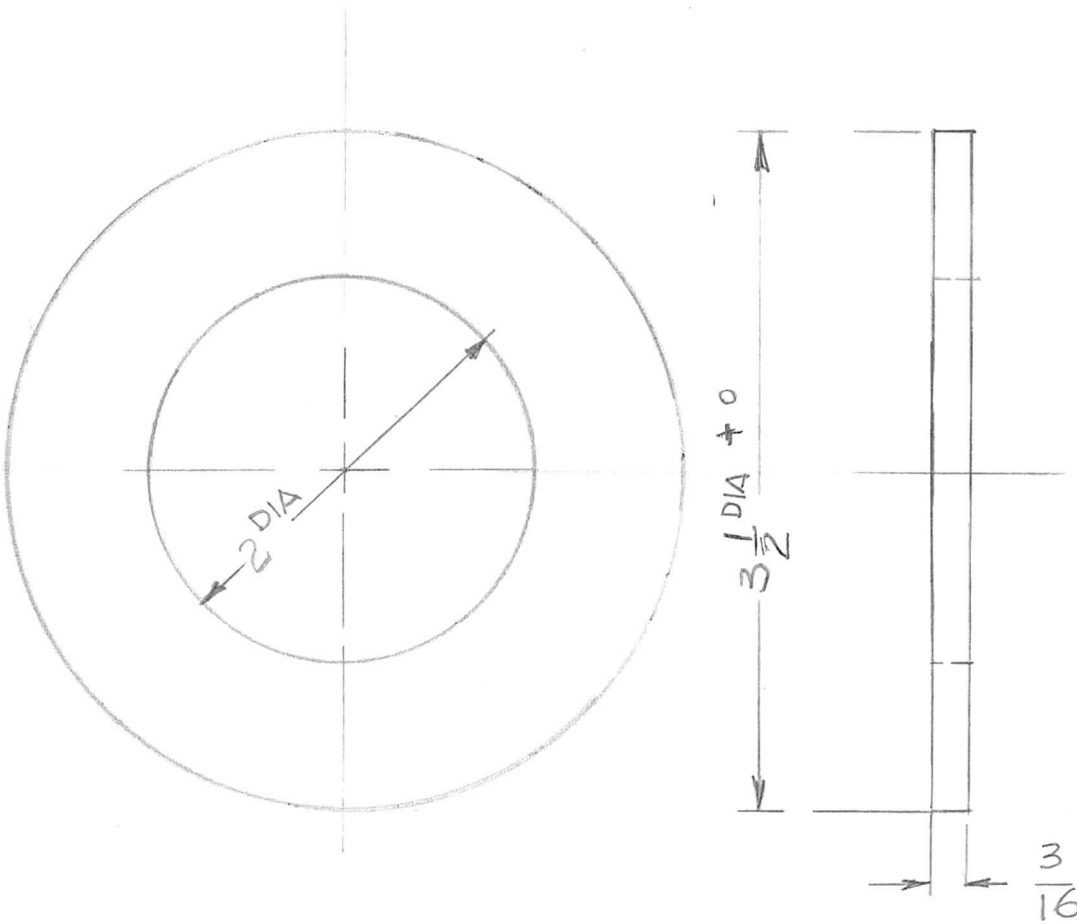
APPLICATION			REVISIONS						
QTY	MODEL USED ON	ASS'Y NO.	LTR	DESCRIPTION	DATE	E.M.N.NO	DRAFT	CHKD	APPD
3	A'W 101-4	AX 5263	∅	ORIGINAL RELEASE	1-3-99		GDL		



UNLESS OTHERWISE SPECIFIED DIMENSIONS ARE IN INCHES AND INCLUDE CHEMICALLY APPLIED OR PLATED FINISHES		REQ'D	ITEM	PART NUMBER	DESCRIPTION	SYM.
LIST OF MATERIAL						
DECIMALS: .X ± .05, .XX ± .01, .XXX ± .005 FRACTIONS: 1/64 TOLS.: ANGLS: 0° -30'		FINAL APPROVAL <i>JCB</i>		DATE: 8/15/90	<b>THE TECHNICAL MATERIEL CORP.</b> MAMARONECK, NEW YORK  <u>SUPPORT, BASE</u>	
MATERIAL 1x1x1/2		MECH. DES.		DATE		
COLD ROLL STEEL		ELECT. DES.		DATE		
FINISH NICKEL PLATE		CHECKED		DATE		
		DRAWN GDL		DATE 8-22-88		

<b>NOTICE TO PERSONS RECEIVING THIS DRAWING</b> THE TECHNICAL MATERIEL CORPORATION claims proprietary right in the material disclosed hereon. This drawing is issued in confidence for engineering information only and may not be reproduced or used to manufacture anything shown hereon without permission from THE TECHNICAL MATERIEL CORPORATION to the user. This drawing is loaned for mutual assistance and is subject to recall at any time.				SIZE <b>A</b>	CODE IDENT. NO. <b>82679</b>	DWG NO. <b>PO 351</b>	ISSUE <i>(Signature)</i>
SCALE <b>1:1</b>			SHEET <b>OF</b>				

APPLICATION			REVISIONS						
QTY	MODEL USED ON	ASS'Y NO.	LTR	DESCRIPTION	DATE	E.M.N.NO	DRAFT	CHKD	APPD
1	AW101-4	AX 5263	Ø	ORIGINAL RELEASE	1-3-99		G.D.L		



UNLESS OTHERWISE SPECIFIED DIMENSIONS ARE IN INCHES AND INCLUDE CHEMICALLY APPLIED OR PLATED FINISHES	REQ'D	ITEM	PART NUMBER	DESCRIPTION	SYM.
DECIMALS .X ± .05 .XX ± .01 .XXX ± .005 FRACTIONS 1/64 ANGLES 0° .30'	LIST OF MATERIAL				
	FINAL APPROVAL <i>GB</i>		DATE	<b>THE TECHNICAL MATERIEL CORP.</b> MAMARONECK, NEW YORK  PLATE, TOP	
MATERIAL <i>3/16 THK COLD ROLL STEEL</i>	MECH. DES.	DATE			
FINISH	ELECT. DES.	DATE			
	CHECKED	DATE			
	DRAWN <i>G.D.L</i>	DATE	<i>8-25-88</i>		

<b>NOTICE TO PERSONS RECEIVING THIS DRAWING</b> THE TECHNICAL MATERIEL CORPORATION claims proprietary right in the material disclosed hereon. This drawing is issued in confidence for engineering information only and may not be reproduced or used to manufacture anything shown hereon without permission from THE TECHNICAL MATERIEL CORPORATION to the user. This drawing is loaned for mutual assistance and is subject to recall at any time.	SIZE	CODE IDENT. NO.	DWG NO.	ISSUE
	A	82679	PO 353	Ø
SCALE 1:1		SHEET		OF

APPLICATION			REVISIONS						
QTY	MODEL USED ON	ASS'Y NO.	LTR	DESCRIPTION	DATE	E.M.N.NO	DRAFT	CHKD	APPD

GPT-10K      ~~Ø~~ RELEASE      3-1-89      G.D.L

REPLACEMENT CONTACT KIT  
WARD LEONARD PART # 5M80  
TO BE USED WITH 5003A-30001-21  
CONTACTOR \_

UNLESS OTHERWISE SPECIFIED DIMENSIONS ARE IN INCHES AND INCLUDE CHEMICALLY APPLIED OR PLATED FINISHES		REQ'D	ITEM	PART NUMBER	DESCRIPTION	SYM.
<small>DECIMALS      FRACTIONS</small> .X ± .05      TOLS.      1/64 .XX ± .01      ANGLES .XXX ± .005      0° -30'		LIST OF MATERIAL				
MATERIAL		FINAL APPROVAL			<b>THE TECHNICAL MATERIEL CORP.</b> MAMARONECK, NEW YORK  RL130-6 CONTACT KIT	
FINISH		MECH. DES.	DATE			
		ELECT. DES.	DATE			
		CHECKED	DATE			
		DRAWN	DATE			

NOTICE TO PERSONS RECEIVING THIS DRAWING THE TECHNICAL MATERIEL CORPORATION claims proprietary right in the material disclosed hereon. This drawing is issued in confidence for engineering information only and may not be reproduced or used to manufacture anything shown hereon without permission from THE TECHNICAL MATERIEL CORPORATION to the user. This drawing is loaned for mutual assistance and is subject to recall at any time.	SIZE	CODE IDENT. NO.	DWG NO.	ISSUE
	A	82679	PO 354	<del>Ø</del>
SCALE		SHEET		OF