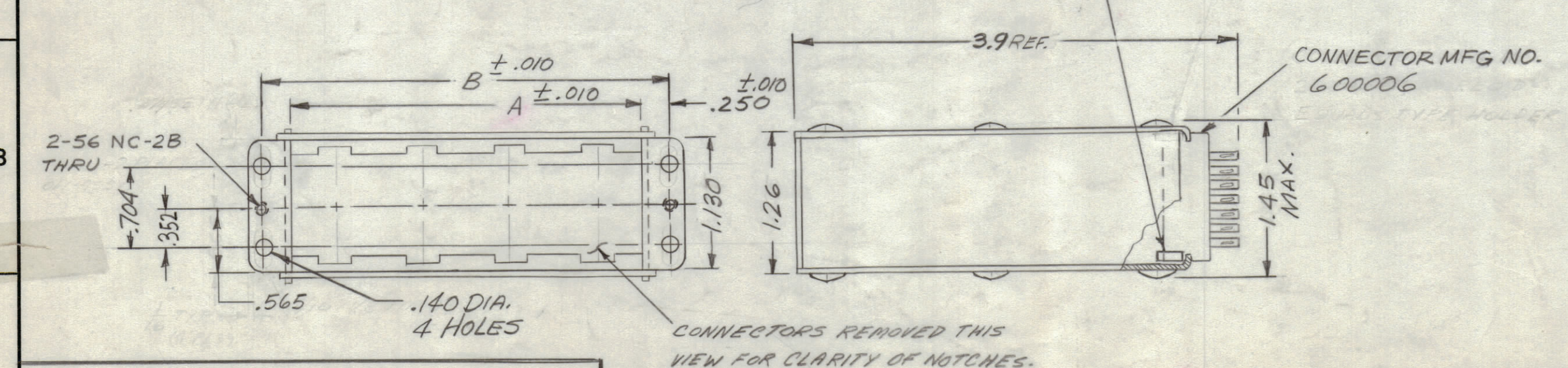
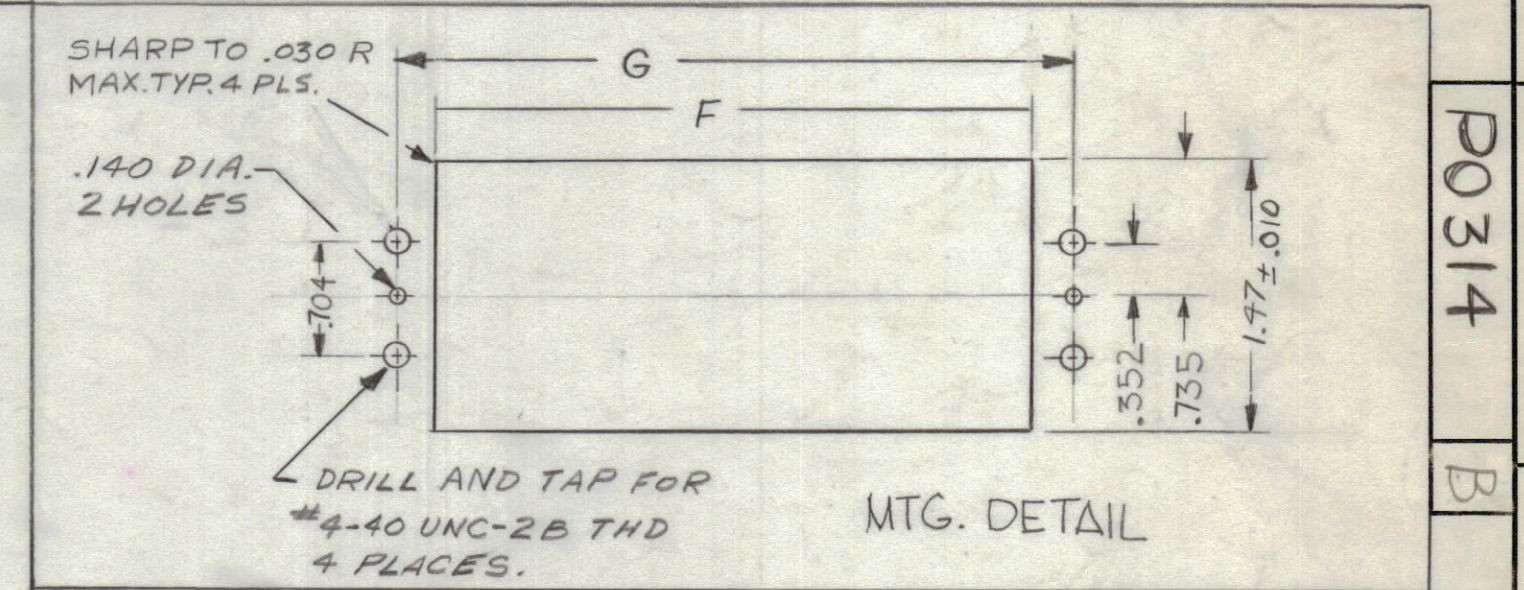
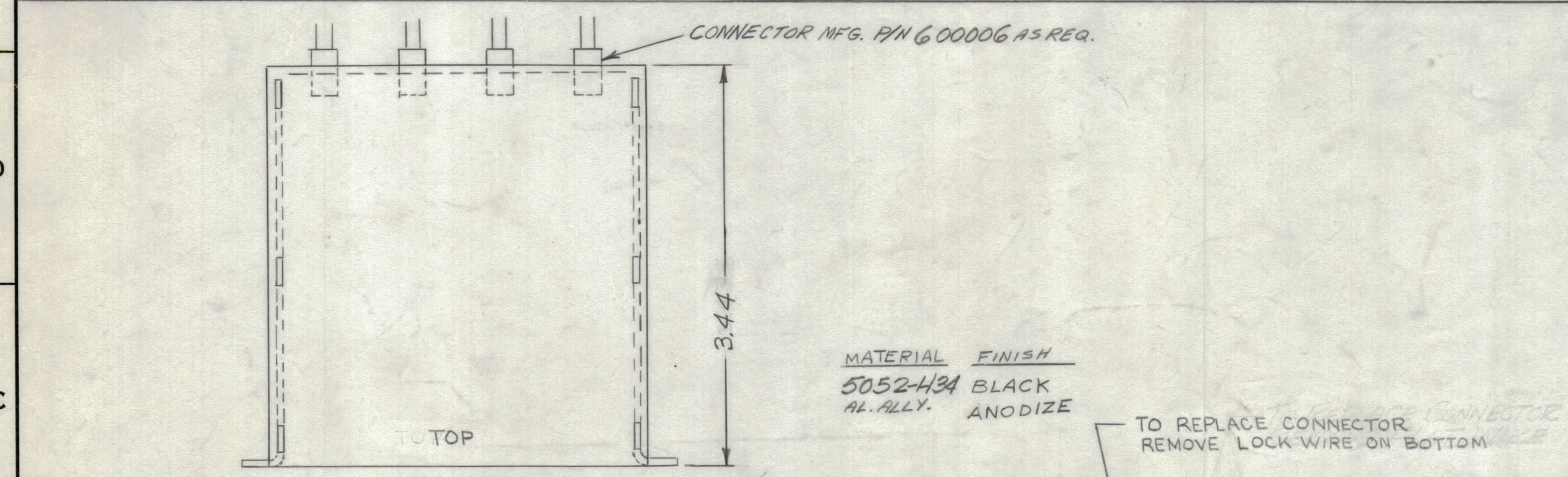
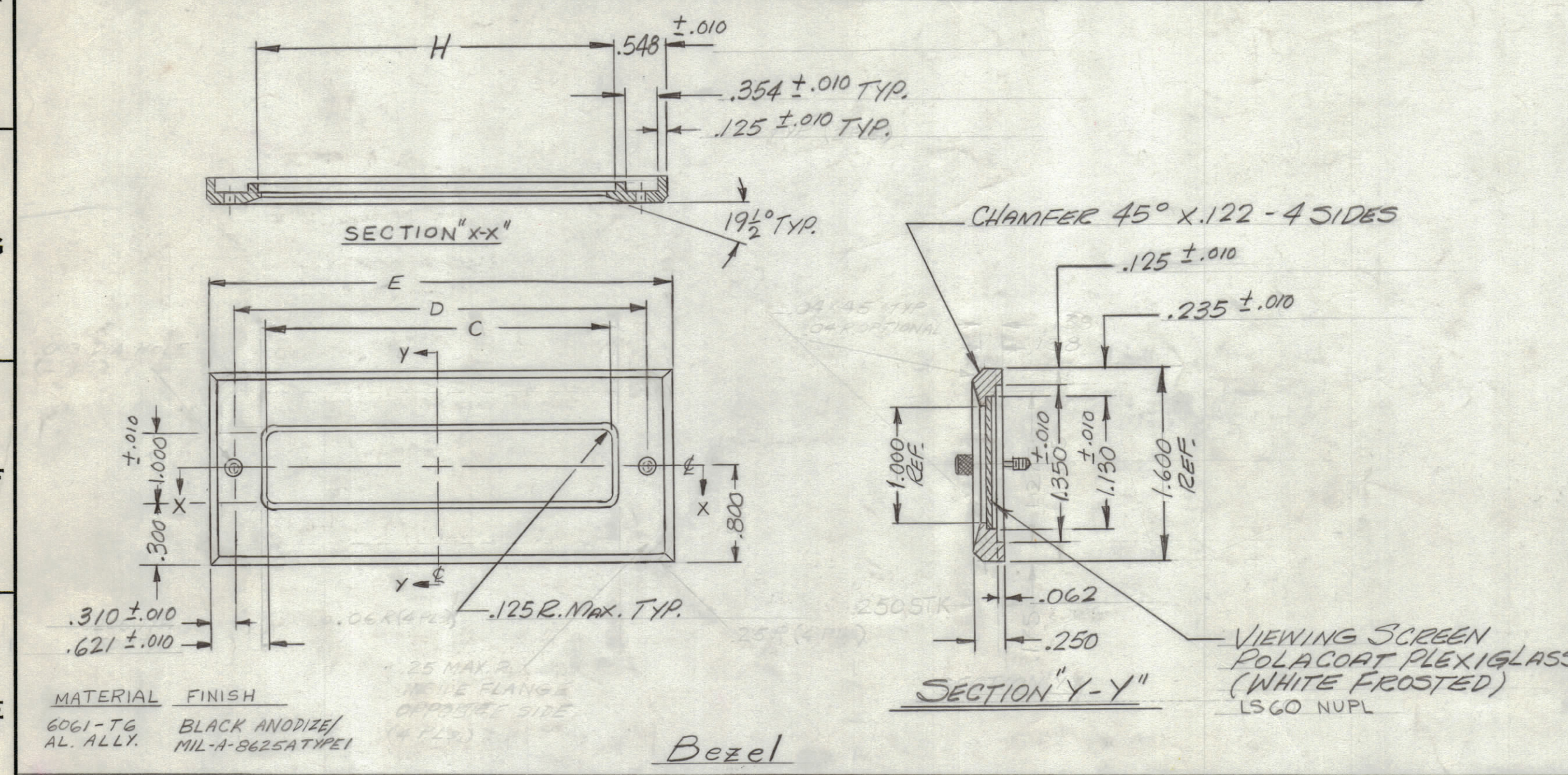


TMC CASE	"A" "B"		BEZEL			MOUNTING DIM		NUMBER OF READOUTS ACCOMMODATED	BEZEL
PART No. MFG P/N	A B	MFG. P/N "C" "D" "E"	"F" "G"	"H" ±.010					
PO314-1 600068-9	6.795 7.295	31003-9 6.673 7.295 7.915	7.070 7.295	9	6.820				

REVISIONS					
ZONE	SYM	DESCRIPTION	DATE	E.M.N. NO.	APPD
	Ø	ORIG RELEASE FOR PROD	7/29/65		
	A	COMPLETELY REVISED	2/24/66	15753	HCA
	B	MFG P/N WAS 30300-9, ADDED LS60 NUPL, CHG'D. NOTE FR FLAT WIRE TO LOCK WIRE.	7/28/66	16643	RME



NOMENCLATURE
 PO314-1C-B
 TMC P/N CASE BEZEL
 EITHER OR BOTH

Case

STANDARD DRAWING

NOTES

RTIH-1		ASS'Y. NO.
Q'TY./UNIT	MODEL USED ON	5401-326
SCALE	CODE	
DO NOT SCALE		

THE CONTENTS OF THIS DRAWING ARE THE EXCLUSIVE PROPERTY OF THE TECHNICAL MATERIEL CORP. ITS UNAUTHORIZED USE OR REPRODUCTION IN WHOLE OR IN PART IS STRICTLY FORBIDDEN.

REQ'D.	ITEM	PART NUMBER	DESCRIPTION	SYMBOL
LIST OF MATERIAL				
MATERIAL			THE TECHNICAL MATERIEL CORP. MAMARONECK, NEW YORK	
FINISH			TITLE HOLDER, DIGITAL READOUT	
DRAWN	D.V. VENEZIAN	DATE	1/16/65	FINAL APPROVAL
CHECKED	[Signature]	DATE	12/29/65	[Signature]
ELECT. DES.		DATE		
MECH. DES.		DATE		
DECIMALS	.X ± .05	FRACTIONS	± 1/64	
	.XX ± .01	ANGLES	± 0° 30'	
	.XXX ± .005			
TOLERANCES				
UNLESS OTHERWISE SPECIFIED DIMENSIONS ARE IN INCHES AND INCLUDE CHEMICALLY APPLIED OR PLATED FINISHES				
DRAWN		DATE		
D.V. VENEZIAN		1/16/65		
CHECKED		DATE		
[Signature]		12/29/65		
ELECT. DES.		DATE		
MECH. DES.		DATE		
SHEET		REV. LTR.		
10/29/65		B		